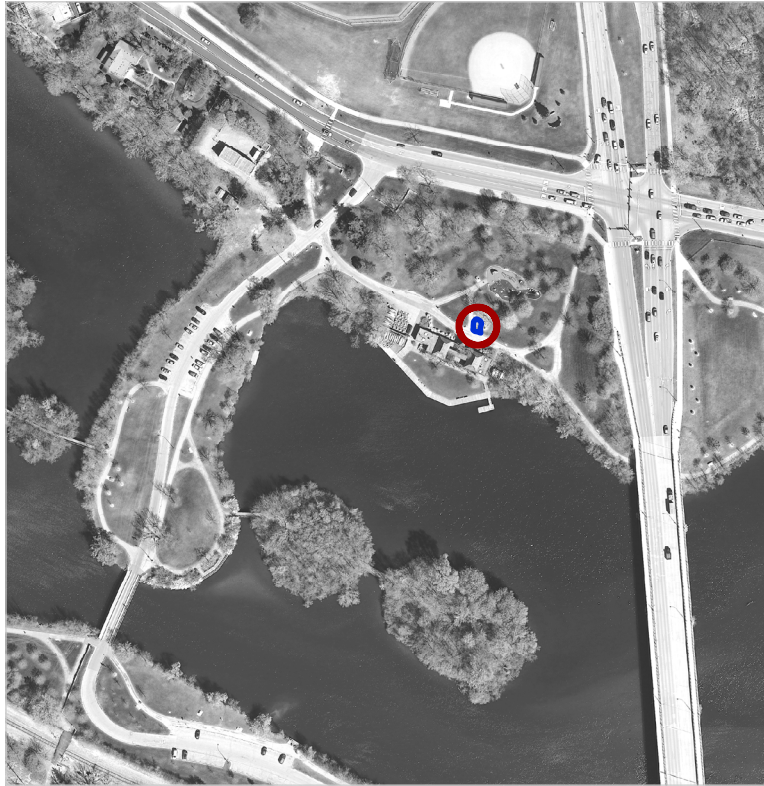
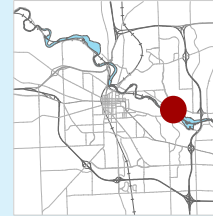


# Gallup Park Rain Garden

Approximate Address: 3000 Fuller Rd.



Year Built: 2006

Designer: Ann Arbor Parks & Recreation

Aesthetic Level Required: High

## DESCRIPTION:

This small, formal rain garden was rebuilt in 2014. It collects water from the play area and upslope grassy area. The location next to a play area for young children means that pesticide use should be minimized and care should be taken to remove any poisonous weeds.

## MAINTENANCE NOTES:

The adjacent sandbox may be a source of sediment build-up. Invasive Field Bindweed exists but the area is otherwise weed free. Cut back standing dead between late fall and early spring.



July 2014

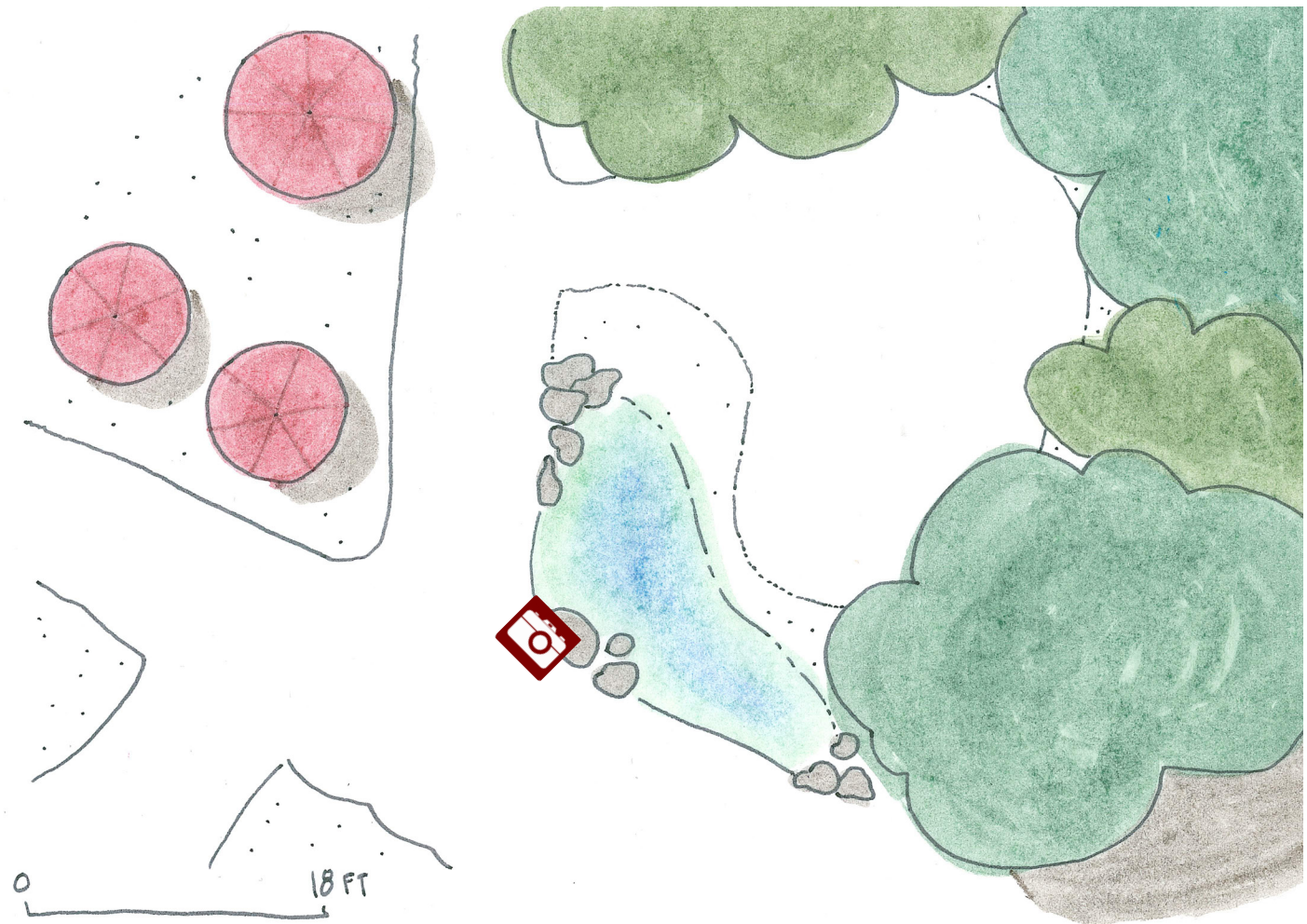
ACTIVITY	Monthly	Biannually	Annually	As Needed
Remove Trash	X			
Remove Invasives	X			
Remove Sediment		X		
Controlled Burns				X
Herbicide				
Add/Divide Plants				X
Collect Seeds			fall	

YEARLY ESTIMATE	HOURS	COST
Supervisor Labor	15	\$611
Volunteer Labor	15	\$300
Equipment		\$87
Controlled Burns		\$8
Herbicide		
Contingency (10%)		\$101
SUM		\$1,107

# Gallup Park Rain Garden

Site Plan

Acres: 0.01  
SF: 500



## NATIVE PLANTS TO LOOK FOR:

### Perennials

Black-eyed Susan (*Rudbeckia hirta*)  
Blue Flag Iris (*Iris versicolor*)  
Calico Aster (*Aster lateriflorus*)  
Canada Anemone (*Anemone canadensis*)  
False Sunflower (*Heliopsis helianthoides*)  
Foxglove Beard-tongue (*Penstemon digitalis*)  
Golden Alexander (*Zizia aurea*)  
Gold Finger (*Potentilla fruticosa*)  
Great Blue Lobelia (*Lobelia siphilitica*)  
Husker Red (*Penstemon digitalis*)  
Indian Grass (*Sorghastrum nutans*)  
Mountain Mint (*Pycnanthemum virginianum*)  
Sneezeweed (*Helenium autumnale*)  
Spiderwort (*Tradescantia ohiensis*)  
Stiff Goldenrod (*Solidago rigida*)  
Switchgrass (*Panicum virgatum* 'Shenandoah')

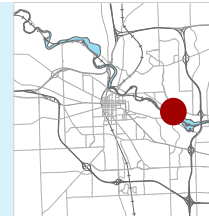
Wild Bergamot (*Monarda fistulosa*)  
Wild Strawberry (*Fragaria virginiana*)  
White Swan Coneflower (*Echinacea purpurea*)

### Shrubs and Trees:

Goldfinger Potentilla (*Potentilla fruticosa* 'Goldfinger')

# Gallup Park River Rain Gardens

Approximate Address: 3000 Fuller Rd.



Year Built: 2017

Designer: Ann Arbor Parks & Recreation  
SmithGroup JJR

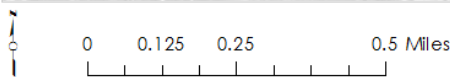
Aesthetic Level Required: High

DESCRIPTION:

pending

MAINTENANCE NOTES:

pending



July 2014

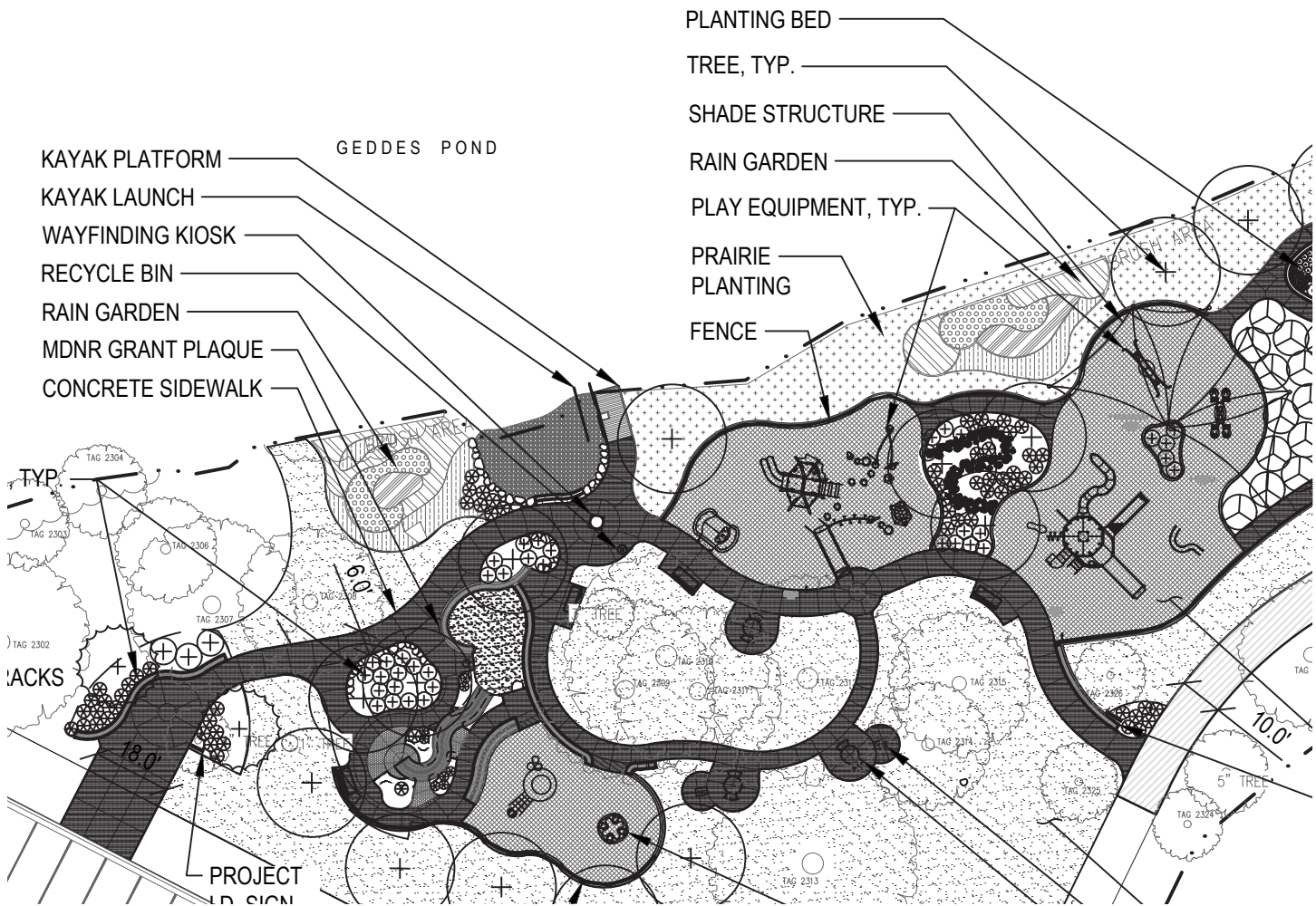
ACTIVITY	Monthly	Biannually	Annually	As Needed
Remove Trash	X			
Remove Invasives	X			
Remove Sediment		X		
Controlled Burns				X
Herbicide				
Add/Divide Plants				X
Collect Seeds			fall	

YEARLY ESTIMATE	HOURS	COST
Supervisor Labor		
Volunteer Labor		
Equipment		
Controlled Burns		
Herbicide		
Contingency (10%)		
SUM		

# Gallup Park Rain Garden

Site Plan

Acres: 0.01  
SF: 500



## NATIVE PLANTS TO LOOK FOR:

### Perennials

- Blue Flag Iris (*Iris virginicus*)
- Dark Green Bulrush (*Scirpus atrovirens*)
- Foxtail Sedge (*Carex vulpinoidea*)
- 'Prairie Sky' Switch Grass (*Panicum virgatum* 'Prairie Sky')
- Virginia Wild Rye (*Elymus virginicus*)

