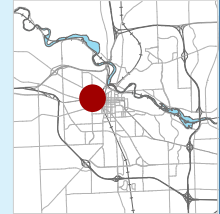
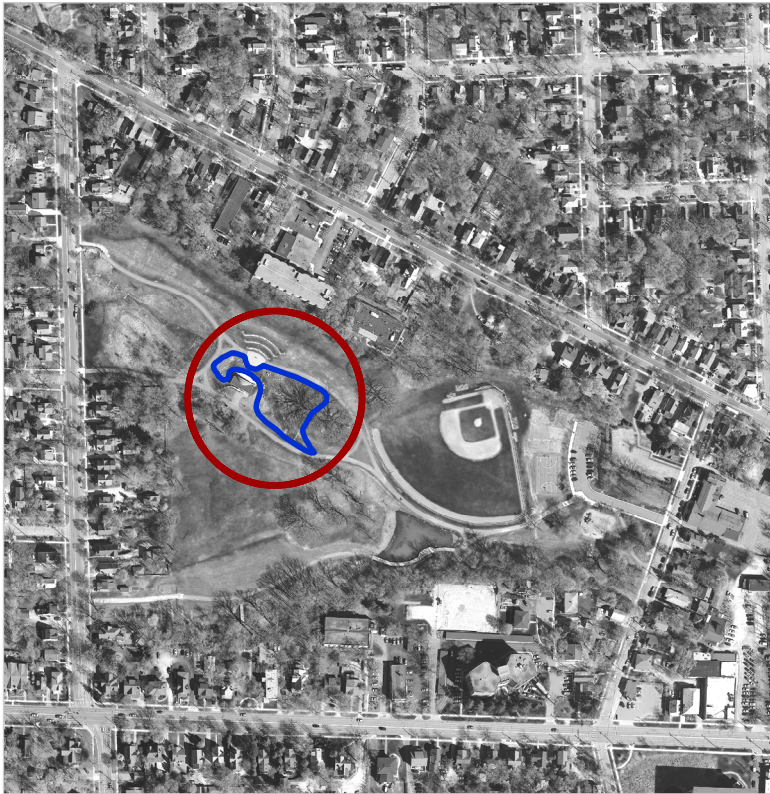


West Park Bandshell Wetland

Approximate Address: 215 Chapin St.



SW



Year Built: 2010

Designer: Beckett & Raeder / ECT

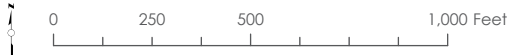
Aesthetic Level Required: High

DESCRIPTION:

Surrounding the bandshell in West Park is a wetland where Cat-Tails thrive. Stormwater runoff comes from overland flow and from the road via an uphill wetland complex. A controlled burn was conducted in the spring of 2016.

MAINTENANCE NOTES:

The cat-tails need to be monitored and managed regularly. All vegetation should be cut down regularly to allow the stage to be visible.



July 2014

ACTIVITY	Monthly	Biannually	Annually	As Needed
Remove Trash	X			
Remove Invasives	X			
Remove Sediment				X
Controlled Burns				X
Herbicide				X
Add/Divide Plants				X
Collect Seeds			fall	

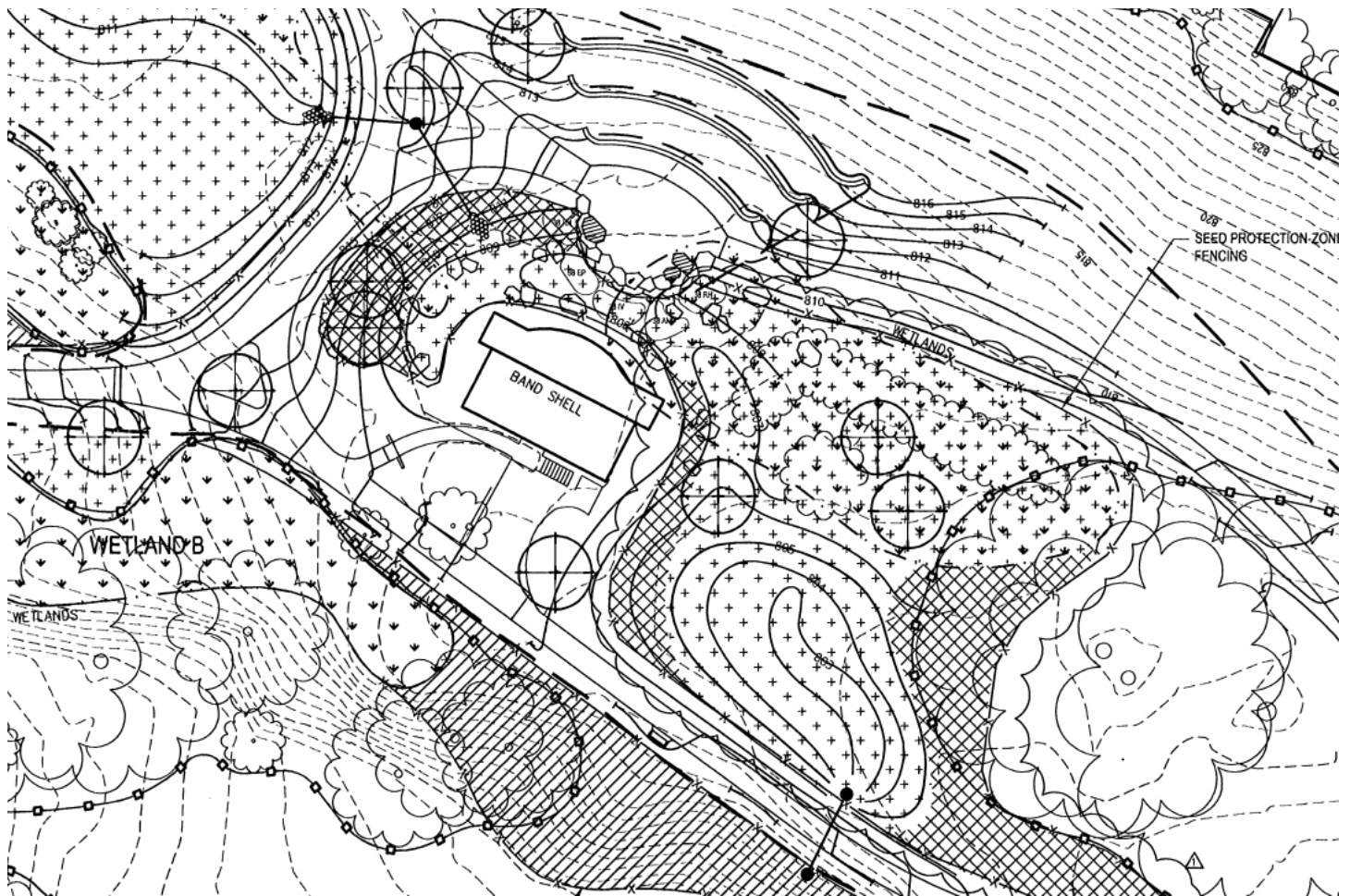
YEARLY ESTIMATE	HOURS	COST
Supervisor Labor	21	\$841
Volunteer Labor	30	\$600
Equipment		\$118
Controlled Burns*		\$248
Herbicide	3.5	\$127
Contingency (10%)		\$201
SUM		\$2,135

*per estimate from PlantWise. Burn every three years so cost spread across years

West Park Bandshell Wetland

Site Plan

Acres: 0.34
SF: 14,774

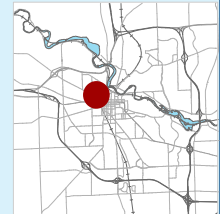


NATIVE PLANTS TO LOOK FOR:

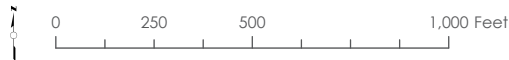
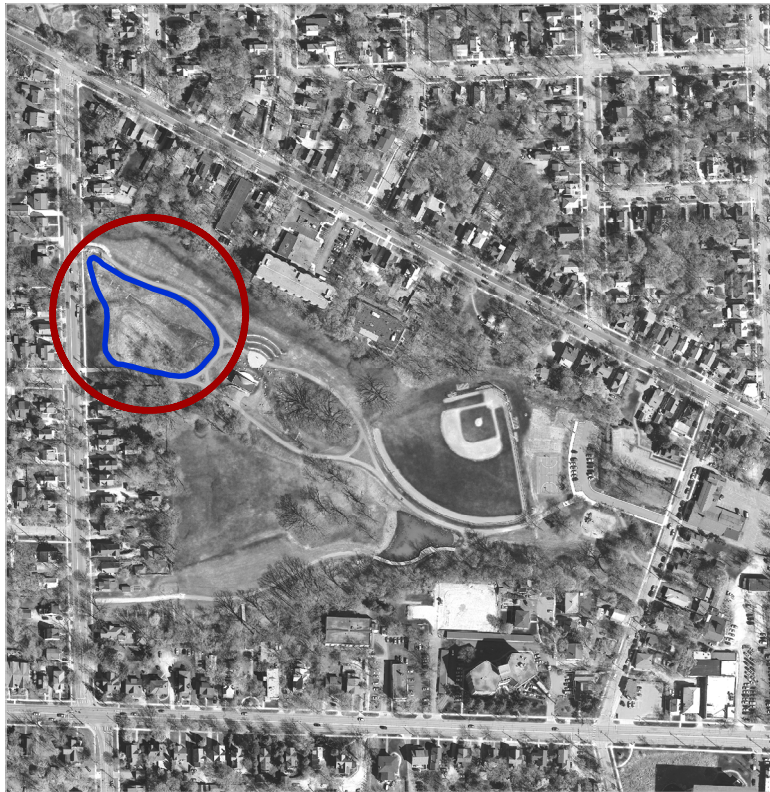
- | | | |
|---|---|---|
| Arrow-leaved Aster (<i>Aster sagittifolius</i>) | Giant Smartweed (<i>Polygonum pensylvanicum</i>) | Roundhead Bushclover (<i>Lespedeza capitata</i>) |
| Awl-fruited Sedge (<i>Carex stipata</i>) | Golden Alexander (<i>Zizia aurea</i>) | Sedge (<i>Carex molesta</i>) |
| Bebb's Sedge (<i>Carex bebbii</i>) | Grassleaved Goldenrod (<i>Solidago graminifolia</i>) | Sedge (<i>Carex muhlenbergii</i>) |
| Big-leaved Aster (<i>Aster macrophyllus</i>) | Great Blue Lobelia (<i>Lobelia siphilitica</i>) | Short's Aster (<i>Aster shortii</i>) |
| Bicknell's Oval Sedge (<i>Carex bicknellii</i>) | Green Coneflower (<i>Rudbeckia laciniata</i>) | Silky Wild Rye (<i>Elymus villosus</i>) |
| Big Bluestem (<i>Andropogon gerardii</i>) | Hairy Beard Tongue (<i>Penstemon digitalis</i>) | Showy Goldenrod (<i>Solidago speciosa</i>) |
| Black-Eyed Susan (<i>Rudbeckia hirta</i>) | Hairy Mountain Mint (<i>Pycnanthemum pilosum</i>) | Slender Rush (<i>Juncus tenuis</i>) |
| Blazing Star (<i>Liatris aspera</i>) | Heart-leaved Aster (<i>Aster cordifolius</i>) | Slender Wheat (<i>Agropyron trachycalum</i>) |
| Blue Flag Iris (<i>Iris versicolor</i>) | Hoary Vervain (<i>Verbena stricta</i>) | Smooth Blue Aster (<i>Aster laevis</i>) |
| Blue-Stem Goldenrod (<i>Solidago caesia</i>) | Knobbed Hop Sedge (<i>Carex lupuliformis</i>) | Sneezeweed (<i>Helenium autumnale</i>) |
| Blue Vervain (<i>Verbena hastata</i>) | Little Bluestem (<i>Schizachyrium scoparium</i>) | Soft-stem Bulrush (<i>Scirpus validus</i>) |
| Bottlebrush Grass (<i>Elymus hystrix</i>) | Lupine (<i>Lupinus perennis occidentalis</i>) | Stiff Goldenrod (<i>Solidago rigida</i>) |
| Brown-Eyed Susan (<i>Rudbeckia triloba</i>) | Missouri Ironweed (<i>Vernonia missurica</i>) | Swamp Milkweed (<i>Asclepias incarnata</i>) |
| Butterfly Weed (<i>Asclepias tuberosa</i>) | Monkeyflower (<i>Mimulus ringens</i>) | Switchgrass (<i>Panicum virgatum</i>) |
| Calico Aster (<i>Aster laterifolius</i>) | Mountain Mint (<i>Pycnanthemum virginianum</i>) | Tall Anemone (<i>Anemone virginiana</i>) |
| Canada Wild Rye (<i>Elymus canadensis</i>) | New England Aster (<i>Aster novae-angliae</i>) | Tall Coreopsis (<i>Coreopsis tripteris</i>) |
| Columbine (<i>Aquilegia canadensis</i>) | Nodding Fescue (<i>Festuca obtusa</i>) | Torrey's Rush (<i>Juncus torreyi</i>) |
| Common Arrowhead (<i>Sagittaria latifolia</i>) | Nodding Smartweed (<i>Polygonum lapathifolium</i>) | Virginia Wild Rye (<i>Elymus virginicus</i>) |
| Common Boneset (<i>Eupatorium perfoliatum</i>) | Nodding Wild Onion (<i>Allium cernuum</i>) | Wild Bergamot (<i>Monarda fistulosa</i>) |
| Common Water Plantain (<i>Alisma subcordatum</i>) | Old-Field Goldenrod (<i>Solidago nemoralis</i>) | Wild Geranium (<i>Geranium maculatum</i>) |
| Common Wood Sedge (<i>Carex blanda</i>) | Partridge Pea (<i>Cassia fasciculata</i>) | Wild Phlox (<i>Phlox divaricata</i>) |
| Culver's Physic (<i>Veronicastrum virginicum</i>) | Path Rush (<i>Juncus tenuis</i>) | Woodland Brome (<i>Bromus pubescens</i>) |
| Dark Green Rush (<i>Scirpus atrovirens</i>) | Pointed Broom Sedge (<i>Carex scoparia</i>) | Wood Sedge (<i>Carex rosea</i>) |
| Ditch Stonecrop (<i>Penthorum sedoides</i>) | Prairie Cinquefoil (<i>Potentilla arguta</i>) | Wool Grass (<i>Scirpus cyperinus</i>) |
| Elm-Leaved Goldenrod (<i>Solidago ulmifolia</i>) | Prairie Cord Grass (<i>Spartina pectinata</i>) | Yellow Coneflower (<i>Ratibida pinnata</i>) |
| False Dragonhead (<i>Physostegia virginiana</i>) | Prairie Dock (<i>Silphium terebinthinaceum</i>) | Yellow Giant Hyssop (<i>Agastache nepetoides</i>) |
| False Sunflower (<i>Heliopsis helianthoides</i>) | Purple Giant Hyssop (<i>Agast. scrofulariaefolia</i>) | Zig-Zag Goldenrod (<i>Solidago flexicaulis</i>) |
| Fox Sedge (<i>Carex vulpinoidea</i>) | Riddell's Goldenrod (<i>Solidago riddellii</i>) | |
| Fowl Manna Grass (<i>Glyceria striata</i>) | River Bulrush (<i>Scirpus fluviatilis</i>) | |

West Park Northwest Wetland

Approximate Address: 215 Chapin St.



SW



Year Built: 2010

Designer: Beckett & Raeder / ECT

Aesthetic Level Required: High

DESCRIPTION:

This natural area receives stormwater from road runoff. It is terraced in shape to slow water and is full of trees and wetland plants. There is often standing water in portions. A controlled burn was conducted in the spring of 2016 by PlantWise.

MAINTENANCE NOTES:

Burn and seed regularly. Invasives include Teasel, Canada Thistle and Yellow Sweet Clover.



July 2014

ACTIVITY	Monthly	Biannually	Annually	As Needed
Remove Trash	X			
Remove Invasives	X			
Remove Sediment				X
Controlled Burns				X
Herbicide				X
Add/Divide Plants				X
Collect Seeds			fall	

YEARLY ESTIMATE	HOURS	COST
Supervisor Labor	25	\$1,004
Volunteer Labor	60	\$1,200
Equipment		\$149
Controlled Burns*		\$307
Herbicide	3.5	\$130
Contingency (10%)		\$295
SUM		\$3,085

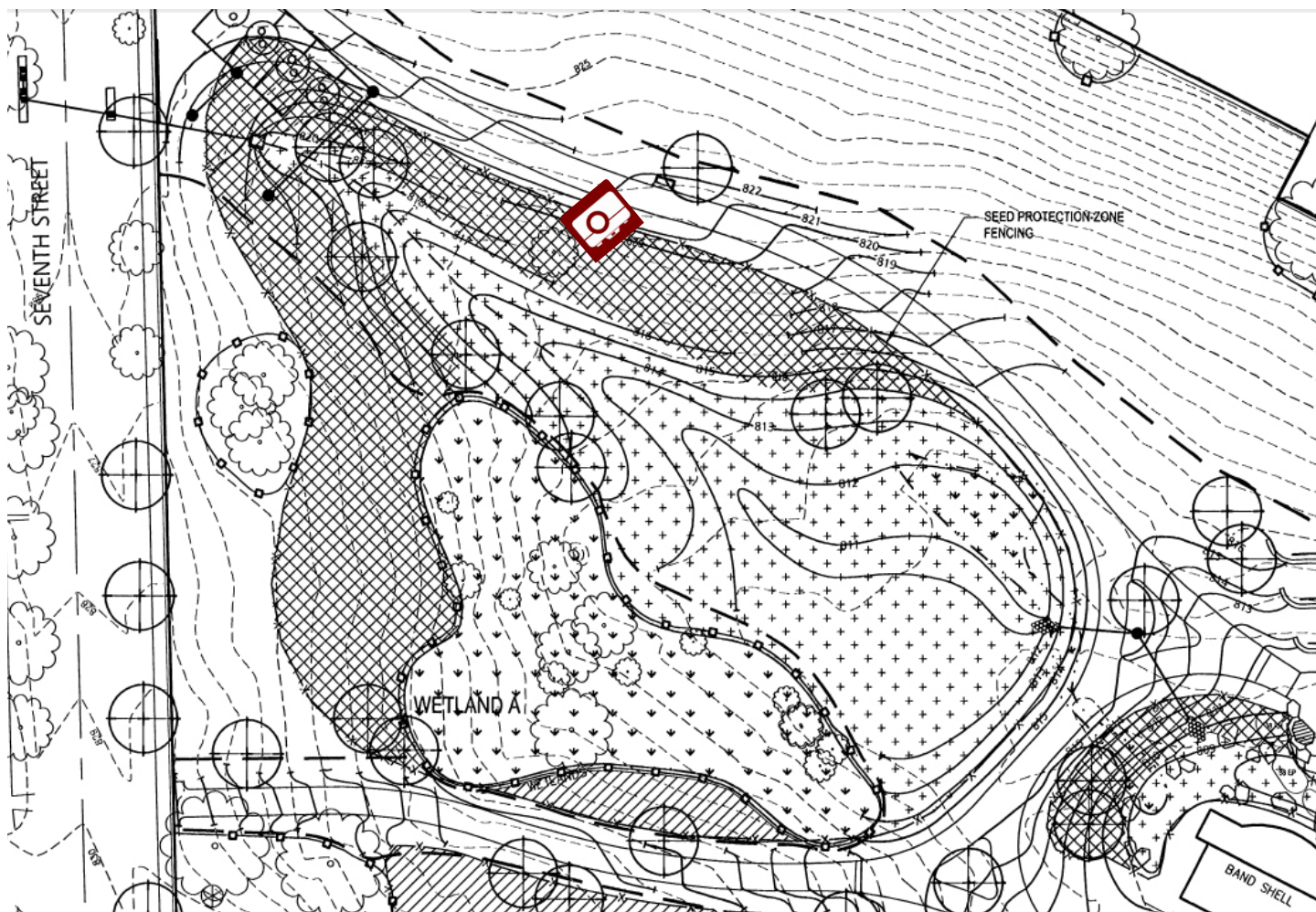
*per estimate from PlantWise. Burn every three years so cost spread across years

West Park Northwest Wetland

Site Plan

Acres: 0.42

SF: 18,297

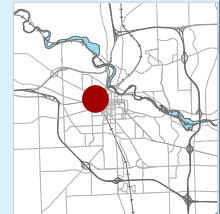


NATIVE PLANTS TO LOOK FOR:

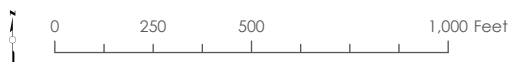
- | | | |
|---|---|---|
| Arrow-leaved Aster (<i>Aster sagittifolius</i>) | Giant Smartweed (<i>Polygonum pensylvanicum</i>) | Roundhead Bushclover (<i>Lespedeza capitata</i>) |
| Awl-fruited Sedge (<i>Carex stipata</i>) | Golden Alexander (<i>Zizia aurea</i>) | Sedge (<i>Carex molesta</i>) |
| Bebb's Sedge (<i>Carex bebbii</i>) | Grassleaved Goldenrod (<i>Solidago graminifolia</i>) | Sedge (<i>Carex muhlenbergii</i>) |
| Big-leaved Aster (<i>Aster macrophyllus</i>) | Great Blue Lobelia (<i>Lobelia siphilitica</i>) | Short's Aster (<i>Aster shortii</i>) |
| Bicknell's Oval Sedge (<i>Carex bicknellii</i>) | Green Coneflower (<i>Rudbeckia laciniata</i>) | Silky Wild Rye (<i>Elymus villosus</i>) |
| Big Bluestem (<i>Andropogon gerardii</i>) | Hairy Beard Tongue (<i>Penstemon digitalis</i>) | Showy Goldenrod (<i>Solidago speciosa</i>) |
| Black-Eyed Susan (<i>Rudbeckia hirta</i>) | Hairy Mountain Mint (<i>Pycnanthemum pilosum</i>) | Slender Rush (<i>Juncus tenuis</i>) |
| Blazing Star (<i>Liatriis aspera</i>) | Heart-leaved Aster (<i>Aster cordifolius</i>) | Slender Wheat (<i>Agropyron trachycaulum</i>) |
| Blue Flag Iris (<i>Iris versicolor</i>) | Hoary Vervain (<i>Verbena stricta</i>) | Smooth Blue Aster (<i>Aster laevis</i>) |
| Blue-Stem Goldenrod (<i>Solidago caesia</i>) | Knobbed Hop Sedge (<i>Carex lupuliformis</i>) | Sneezeweed (<i>Helenium autumnale</i>) |
| Blue Vervain (<i>Verbena hastata</i>) | Little Bluestem (<i>Schizachyrium scoparium</i>) | Soft-stem Bulrush (<i>Scirpus validus</i>) |
| Bottlebrush Grass (<i>Elymus hystrix</i>) | Lupine (<i>Lupinus perennis occidentalis</i>) | Stiff Goldenrod (<i>Solidago rigida</i>) |
| Brown-Eyed Susan (<i>Rudbeckia triloba</i>) | Missouri Ironweed (<i>Vernonia missurica</i>) | Swamp Milkweed (<i>Asclepias incarnata</i>) |
| Butterfly Weed (<i>Asclepias tuberosa</i>) | Monkeyflower (<i>Mimulus ringens</i>) | Switchgrass (<i>Panicum virgatum</i>) |
| Calico Aster (<i>Aster laterifolius</i>) | Mountain Mint (<i>Pycnanthemum virginianum</i>) | Tall Anemone (<i>Anemone virginiana</i>) |
| Canada Wild Rye (<i>Elymus canadensis</i>) | New England Aster (<i>Aster novae-angliae</i>) | Tall Coreopsis (<i>Coreopsis tripteris</i>) |
| Columbine (<i>Aquilegia canadensis</i>) | Nodding Fescue (<i>Festuca obtusa</i>) | Torrey's Rush (<i>Juncus torreyi</i>) |
| Common Arrowhead (<i>Sagittaria latifolia</i>) | Nodding Smartweed (<i>Polygonum lapathifolium</i>) | Virginia Wild Rye (<i>Elymus virginicus</i>) |
| Common Boneset (<i>Eupatorium perfoliatum</i>) | Nodding Wild Onion (<i>Allium cernuum</i>) | Wild Bergamot (<i>Monarda fistulosa</i>) |
| Common Water Plantain (<i>Alisma subcordatum</i>) | Old-Field Goldenrod (<i>Solidago nemoralis</i>) | Wild Geranium (<i>Geranium maculatum</i>) |
| Common Wood Sedge (<i>Carex blanda</i>) | Partridge Pea (<i>Cassia fasciculata</i>) | Wild Phlox (<i>Phlox divaricata</i>) |
| Culver's Physic (<i>Veronicastrum virginicum</i>) | Path Rush (<i>Juncus tenuis</i>) | Woodland Brome (<i>Bromus pubescens</i>) |
| Dark Green Rush (<i>Scirpus atrovirens</i>) | Pointed Broom Sedge (<i>Carex scoparia</i>) | Wood Sedge (<i>Carex rosea</i>) |
| Ditch Stonecrop (<i>Penthorum sedoides</i>) | Prairie Cinquefoil (<i>Potentilla arguta</i>) | Wool Grass (<i>Scirpus cyperinus</i>) |
| Elm-Leaved Goldenrod (<i>Solidago ulmifolia</i>) | Prairie Cord Grass (<i>Spartina pectinata</i>) | Yellow Coneflower (<i>Ratibida pinnata</i>) |
| False Dragonhead (<i>Physostegia virginiana</i>) | Prairie Dock (<i>Silphium terebinthinaceum</i>) | Yellow Giant Hyssop (<i>Agastache nepetoides</i>) |
| False Sunflower (<i>Heliopsis helianthoides</i>) | Purple Giant Hyssop (<i>Agast. scrofulariaefolia</i>) | Zig-Zag Goldenrod (<i>Solidago flexicaulis</i>) |
| Fox Sedge (<i>Carex vulpinoidea</i>) | Riddell's Goldenrod (<i>Solidago riddellii</i>) | |
| Fowl Manna Grass (<i>Glyceria striata</i>) | River Bulrush (<i>Scirpus fluviatilis</i>) | |

West Park Southwest Swale

Approximate Address: 215 Chapin St.



SW



Year Built: 2010

Designer: Beckett & Raeder / ECT

Aesthetic Level Required: Medium

DESCRIPTION:

This long thin swale at the base of the forested hillside on the south side of West Park is full of native grasses and forbs. A historic pathway runs south of the swale. Receiving runoff from the uphill neighborhood, this area is often saturated. A bridge crosses the swale for those coming from Huron Street. A controlled burn was conducted in the spring of 2016.

MAINTENANCE NOTES:

Burn and seed regularly, can have a natural look. Invasive species include Canada Thistle, Yellow Sweet Clover and Dames Rocket.



June 2014

ACTIVITY	Monthly	Biannually	Annually	As Needed
Remove Trash	X			
Remove Invasives	X			
Remove Sediment				X
Controlled Burns				X
Herbicide				X
Add/Divide Plants				X
Collect Seeds			fall	

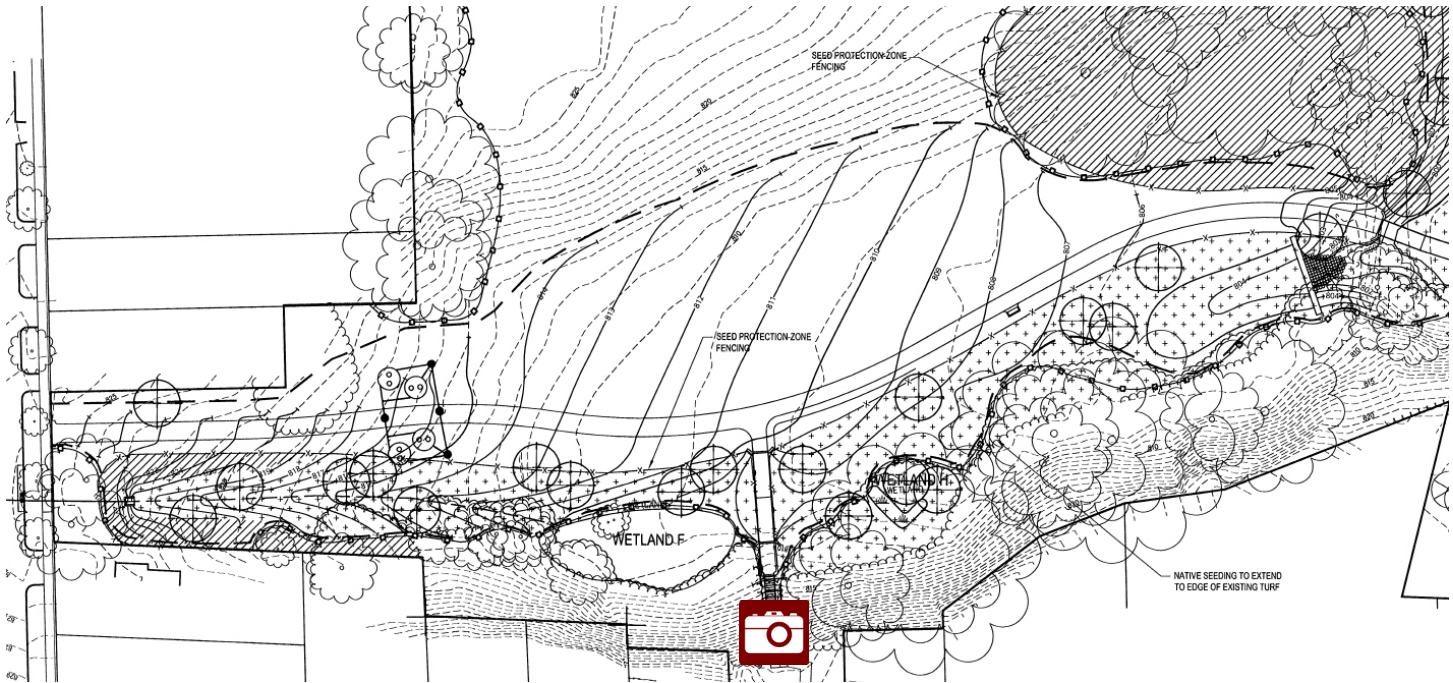
YEARLY ESTIMATE	HOURS	COST
Supervisor Labor	21	\$841
Volunteer Labor	30	\$600
Equipment		\$118
Controlled Burns*		\$101
Herbicide	3	\$117
Contingency (10%)		\$203
SUM		\$1,980

*per estimate from PlantWise. Burn every three years so cost spread across years

West Park Southwest Wetland

Site Plan

Acres: 0.35
SF: 15,436



NATIVE PLANTS TO LOOK FOR:

Awl-fruited Sedge (*Carex stipata*)
Bebb's Sedge (*Carex bebbii*)
Blue Vervain (*Verbena hastata*)
Common Arrowhead (*Sagittaria latifolia*)
Common Boneset (*Eupatorium perfoliatum*)
Common Water Plantain (*Alisma subcordatum*)
Common Wood Sedge (*Carex blanda*)
Dark Green Rush (*Scirpus atrovirens*)
Ditch Stonecrop (*Penthorum sedoides*)
Fox Sedge (*Carex vulpinoidea*)
Fowl Manna Grass (*Glyceria striata*)
Giant Smartweed (*Polygonum pennsylvanicum*)
Great Blue Lobelia (*Lobelia siphilitica*)
Green Coneflower (*Rudbeckia laciniata*)
Knobbed Hop Sedge (*Carex lupuliformis*)
Missouri Ironweed (*Vernonia missurica*)
Monkeyflower (*Mimulus ringens*)
New England Aster (*Aster novae-angliae*)
Nodding Smartweed (*Polygonum lapathifolium*)
Path Rush (*Juncus tenuis*)
Pointed Broom Sedge (*Carex scoparia*)

Prairie Cord Grass (*Spartina pectinata*)
River Bulrush (*Scirpus fluviatilis*)
Sneezeweed (*Helenium autumnale*)
Soft-stem Bulrush (*Scirpus validus*)
Swamp Milkweed (*Asclepias incarnata*)
Switchgrass (*Panicum virgatum*)
Torrey's Rush (*Juncus torreyi*)
Virginia Wild Rye (*Elymus virginicus*)
Wool Grass (*Scirpus cyperinus*)

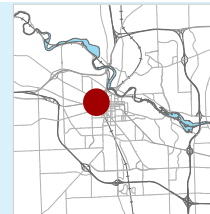
UPLAND MIX:

Arrow-leaved Aster (*Aster sagittifolius*)
Big-leaved Aster (*Aster macrophyllus*)
Black-Eyed Susan (*Rudbeckia hirta*)
Blue-Stem Goldenrod (*Solidago caesia*)
Bottlebrush Grass (*Elymus hystrix*)
Brown-Eyed Susan (*Rudbeckia triloba*)
Calico Aster (*Aster laterifolius*)
Canada Wild Rye (*Elymus canadensis*)
Columbine (*Aquilegia canadensis*)
Culver's Physic (*Veronicastrum virginicum*)

Elm-Leaved Goldenrod (*Solidago ulmifolia*)
Golden Alexander (*Zizia aurea*)
Hairy Beard Tounge (*Penstemon digitalis*)
Hairy Mountain Mint (*Pycnanthemum pilosum*)
Heart-leaved Aster (*Aster cordifolius*)
Nodding Fescue (*Festuca obtusa*)
Nodding Wild Onion (*Allium cernuum*)
Purple Giant Hyssop (*Agast. scrofulariaefolia*)
Sedge (*Carex molesta*)
Sedge (*Carex muhlenbergii*)
Short's Aster (*Aster shortii*)
Silky Wild Rye (*Elymus villosus*)
Tall Anemone (*Anemone virginiana*)
Virginia Wild Rye (*Elymus virginicus*)
Wild Geranium (*Geranium maculatum*)
Wild Phlox (*Phlox divaricata*)
Woodland Brome (*Bromus pubescens*)
Wood Sedge (*Carex rosea*)
Yellow Coneflower (*Ratibida pinnata*)
Yellow Giant Hyssop (*Agastache nepetoides*)
Zig-Zag Goldenrod (*Solidago flexicaulis*)

West Park Central Pond

Approximate Address: 215 Chapin St.



SW



Year Built: 2010

Designer: Beckett & Raeder / ECT

Aesthetic Level Required: High

DESCRIPTION:

The central pond is a favorite location for those passing through the park. The pond is estimated to be 1,322 CY and to have a depth of 2 feet. As sediment accumulates, the pond will need to be dredged. Stormwater runoff comes from overland flow.

MAINTENANCE NOTES:

Edges should be seeded regularly because of wear by passing vehicles and people.



July 2014

ACTIVITY	Monthly	Biannually	Annually	As Needed
Remove Trash	X			
Remove Invasives	X			
Dredge				X
Controlled Burns				X
Herbicide				X
Add/Divide Plants				X
Collect Seeds			fall	

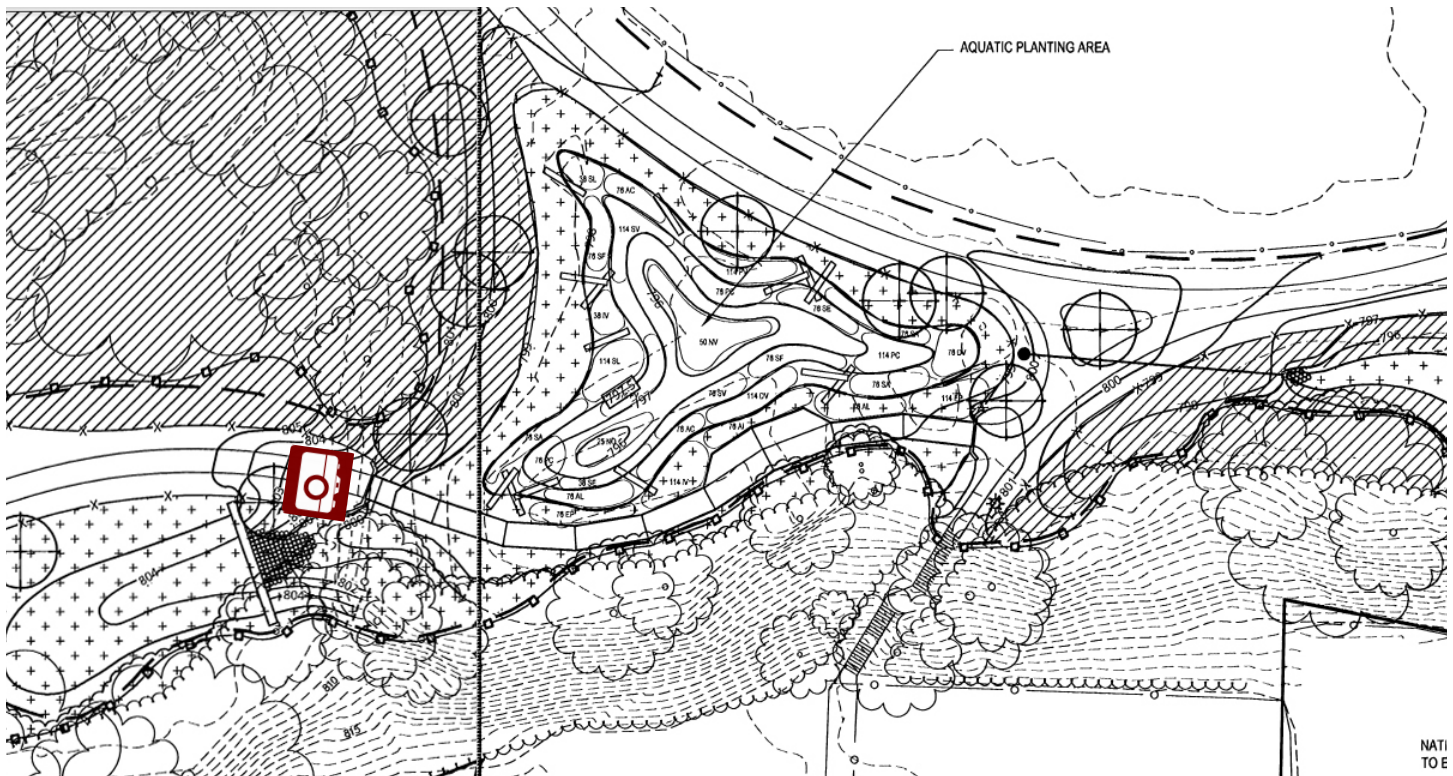
YEARLY ESTIMATE	HOURS	COST
Supervisor Labor	5	\$204
Controlled Burns		
Dredge on-site disposal \$40/CY		
Dredge off-site disposal \$70/CY		
Contingency (10%)		
SUM		\$204

Dredging cost pending

West Park Central Pond

Site Plan

Acres: 0.41
SF: 17,860



NATIVE PLANTS TO LOOK FOR:

AQUATIC ZONE:

Arrow Arum (*Peltandra virginica*)
Blue Flag Iris (*Iris versicolor*)
Bur-reed (*Sparganium eucarpum*)
Common Arrowhead (*Sagittaria latifolia*)
Common Boneset (*Eupatorium perfoliatum*)
Great Bulrush (*Scirpus validus*)
Hardstem Bulrush (*Shoenoplectus acutus*)
Pickerel Weed (*Pontedaria cordata*)
River Bulrush (*Scirpus fluviatilis*)
Swamp Milkweed (*Asclepias incarnata*)
Swamp Loosestrife (*Decodon verticillatus*)
Sweet Flag (*Acorus calamus*)
Water Plantain (*Alisma plantago-aquatica*)
White Water Lily (*Nymphaea odorata*)
Yellow Water Lily (*Nuphar variegata*)

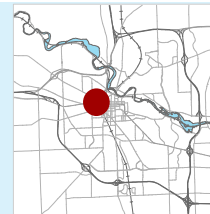
MESIC ZONE:

Awl-fruited Sedge (*Carex stipata*)
Bebb's Sedge (*Carex bebbii*)
Blue Vervain (*Verbena hastata*)
Common Arrowhead (*Sagittaria latifolia*)
Common Boneset (*Eupatorium perfoliatum*)
Common Water Plantain (*Alisma subcordatum*)
Common Wood Sedge (*Carex blanda*)
Dark Green Rush (*Scirpus atrovirens*)
Ditch Stonecrop (*Penthorum sedoides*)
Fox Sedge (*Carex vulpinoidea*)
Fowl Manna Grass (*Glyceria striata*)
Giant Smartweed (*Polygonum pensylvanicum*)
Great Blue Lobelia (*Lobelia siphilitica*)
Green Coneflower (*Rudbeckia laciniata*)
Knobbed Hop Sedge (*Carex lupuliformis*)

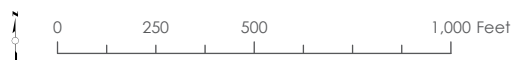
Missouri Ironweed (*Vernonia missurica*)
Monkeyflower (*Mimulus ringens*)
New England Aster (*Aster novae-angliae*)
Nodding Smartweed (*Polygonum lapathifolium*)
Path Rush (*Juncus tenuis*)
Pointed Broom Sedge (*Carex scoparia*)
Prairie Cord Grass (*Spartina pectinata*)
River Bulrush (*Scirpus fluviatilis*)
Sneezeweed (*Helenium autumnale*)
Soft-stem Bulrush (*Scirpus validus*)
Swamp Milkweed (*Asclepias incarnata*)
Switchgrass (*Panicum virgatum*)
Torrey's Rush (*Juncus torreyi*)
Virginia Wild Rye (*Elymus virginicus*)
Wool Grass (*Scirpus cyperinus*)

West Park Southeast Wetland

Approximate Address: 215 Chapin St.



SW



Year Built: 2010

Designer: Beckett & Raeder / ECT

Aesthetic Level Required: Medium

DESCRIPTION:

This long swale often has ponding water but maintains a healthy amount of vegetation. Stormwater runoff comes from overland flow and from the pond's overflow pipe. A controlled burn was conducted in the spring of 2016.

MAINTENANCE NOTES:

Burn and seed regularly, can have a natural look. Invasive species include Crown Vetch, Phragmites, Honeysuckle, Buckthorn, Chickory, Dames Rocket, Yellow Sweet Clover and Garlic Mustard. Woody stems exist in the eastern section.



July 2014

ACTIVITY	Monthly	Biannually	Annually	As Needed
Remove Trash	X			
Remove Invasives	X			
Remove Sediment				X
Controlled Burns				X
Herbicide				X
Add/Divide Plants				X
Collect Seeds			fall	

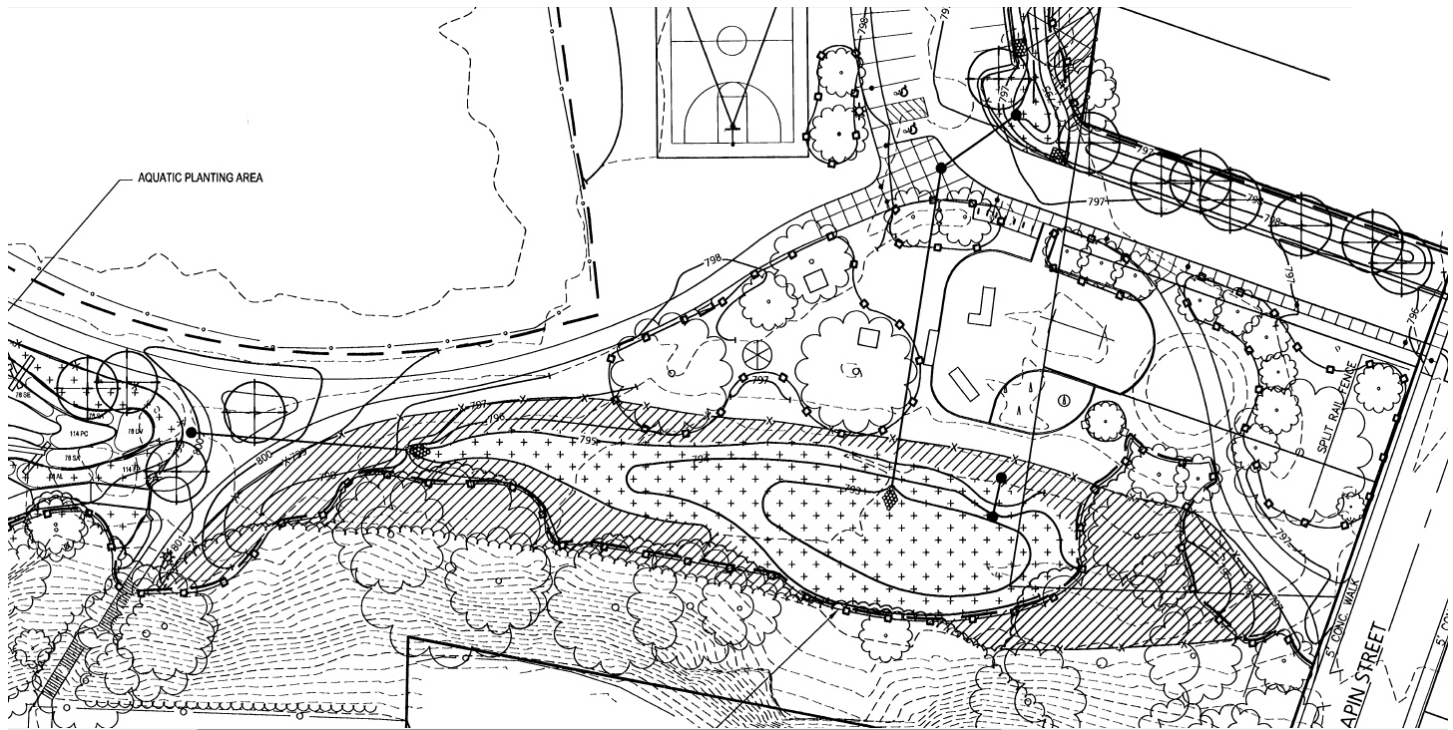
YEARLY ESTIMATE	HOURS	COST
Supervisor Labor	21	\$841
Volunteer Labor	30	\$600
Equipment		\$118
Controlled Burns*		\$101
Herbicide	3	\$117
Contingency (10%)		\$185
SUM		\$1,962

*per estimate from PlantWise. Burn every three years so cost spread across years

West Park Southeast Wetland

Site Plan

Acres: 0.14
SF: 6,009



NATIVE PLANTS TO LOOK FOR:

Awl-fruited Sedge (*Carex stipata*)
Bebb's Sedge (*Carex bebbii*)
Blue Vervain (*Verbena hastata*)
Common Arrowhead (*Sagittaria latifolia*)
Common Boneset (*Eupatorium perfoliatum*)
Common Water Plantain (*Alisma subcordatum*)
Common Wood Sedge (*Carex blanda*)
Dark Green Rush (*Scirpus atrovirens*)
Ditch Stonecrop (*Penthorum sedoides*)
Fox Sedge (*Carex vulpinoidea*)
Fowl Manna Grass (*Glyceria striata*)
Giant Smartweed (*Polygonum pennsylvanicum*)
Great Blue Lobelia (*Lobelia siphilitica*)
Green Coneflower (*Rudbeckia laciniata*)
Knobbed Hop Sedge (*Carex lupuliformis*)
Missouri Ironweed (*Vernonia missurica*)
Monkeyflower (*Mimulus ringens*)
New England Aster (*Aster novae-angliae*)
Nodding Smartweed (*Polygonum lapathifolium*)
Path Rush (*Juncus tenuis*)
Pointed Broom Sedge (*Carex scoparia*)

Prairie Cord Grass (*Spartina pectinata*)
River Bulrush (*Scirpus fluviatilis*)
Sneezeweed (*Helenium autumnale*)
Soft-stem Bulrush (*Scirpus validus*)
Swamp Milkweed (*Asclepias incarnata*)
Switchgrass (*Panicum virgatum*)
Torrey's Rush (*Juncus torreyi*)
Virginia Wild Rye (*Elymus virginicus*)
Wool Grass (*Scirpus cyperinus*)

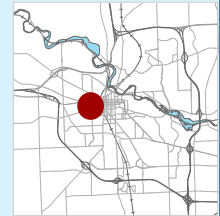
UPLAND MIX:

Arrow-leaved Aster (*Aster sagittifolius*)
Big-leaved Aster (*Aster macrophyllus*)
Black-Eyed Susan (*Rudbeckia hirta*)
Blue-Stem Goldenrod (*Solidago caesia*)
Bottlebrush Grass (*Elymus hystrix*)
Brown-Eyed Susan (*Rudbeckia triloba*)
Calico Aster (*Aster laterifolius*)
Canada Wild Rye (*Elymus canadensis*)
Columbine (*Aquilegia canadensis*)
Culver's Physic (*Veronicastrum virginicum*)

Elm-Leaved Goldenrod (*Solidago ulmifolia*)
Golden Alexander (*Zizia aurea*)
Hairy Beard Tounge (*Penstemon digitalis*)
Hairy Mountain Mint (*Pycnanthemum pilosum*)
Heart-leaved Aster (*Aster cordifolius*)
Nodding Fescue (*Festuca obtusa*)
Nodding Wild Onion (*Allium cernuum*)
Purple Giant Hyssop (*Agast. scrofulariaefolia*)
Sedge (*Carex molesta*)
Sedge (*Carex muhlenbergii*)
Short's Aster (*Aster shortii*)
Silky Wild Rye (*Elymus villosus*)
Tall Anemone (*Anemone virginiana*)
Virginia Wild Rye (*Elymus virginicus*)
Wild Geranium (*Geranium maculatum*)
Wild Phlox (*Phlox divaricata*)
Woodland Brome (*Bromus pubescens*)
Wood Sedge (*Carex rosea*)
Yellow Coneflower (*Ratibida pinnata*)
Yellow Giant Hyssop (*Agastache nepetoides*)
Zig-Zag Goldenrod (*Solidago flexicaulis*)

West Park East Parking Swale

Approximate Address: 215 Chapin St.



SW



Year Built: 2010

Designer: Beckett & Raeder / ECT

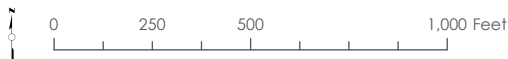
Aesthetic Level Required: Medium

DESCRIPTION:

Receiving water from the parking lot, this swale serves an important purpose of cleaning water before it enters the stormdrain. Cat-tails dominate this area. A controlled burn was conducted in the spring of 2016.

MAINTENANCE NOTES:

Burn regularly and seed. Regularly remove trash. Sediment accumulates quickly because of parking lot. Catalpa saplings are present near outlet.



June 2014

ACTIVITY	Monthly	Biannually	Annually	As Needed
Remove Trash	X			
Remove Invasives	X			
Remove Sediment		X		
Controlled Burns				X
Herbicide				X
Add/Divide Plants				X
Collect Seeds				X

YEARLY ESTIMATE	HOURS	COST
Supervisor Labor	13	\$516
Volunteer Labor	10	\$200
Equipment		\$87
Controlled Burns*		\$68
Herbicide	3	\$115
Contingency (10%)		\$99
SUM		\$1,085

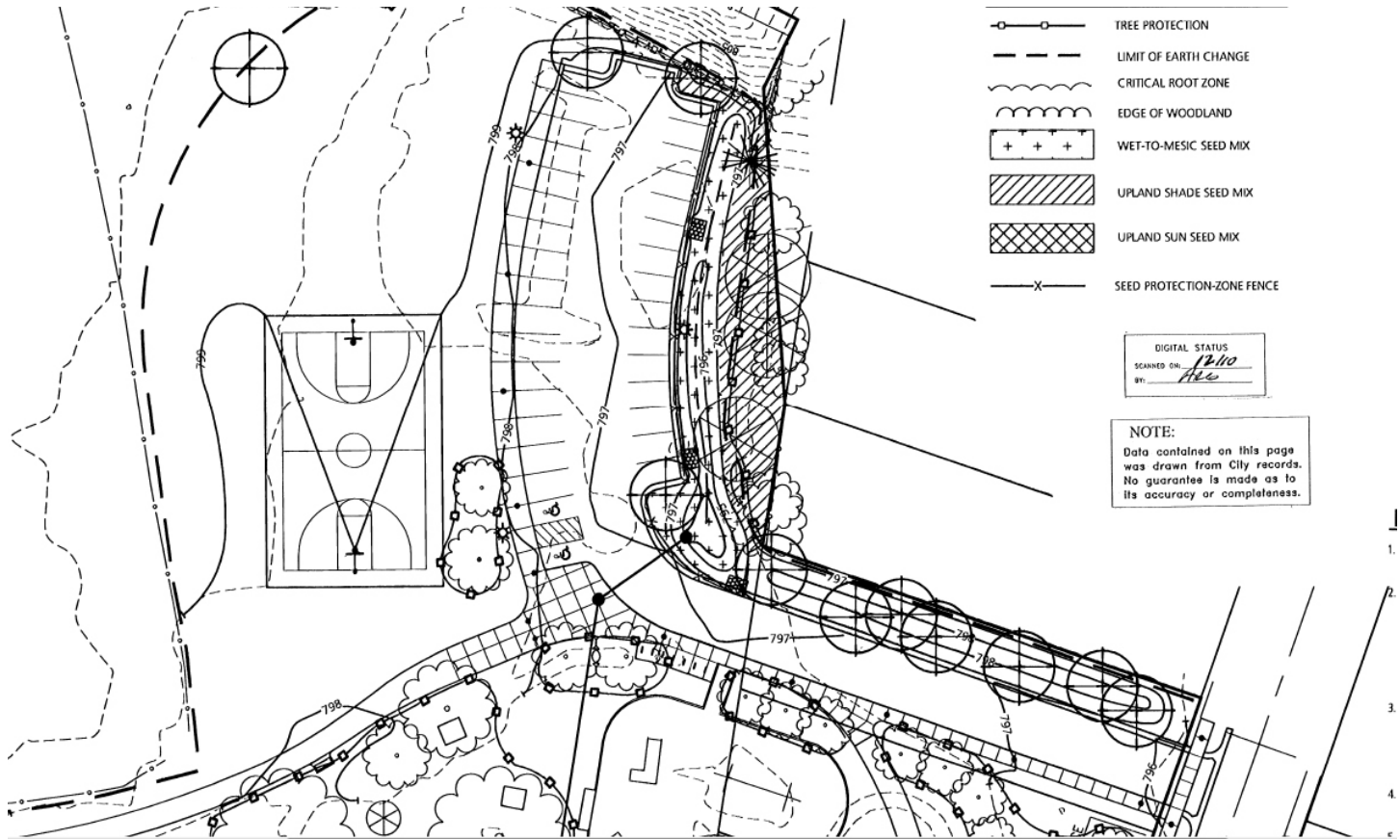
*per estimate from PlantWise. Burn every three years so cost spread across years

West Park East Parking Swale

Site Plan

Acres: 0.09

SF: 4,048



NATIVE PLANTS TO LOOK FOR:

- | | | |
|--|---|---|
| <p> <i>Awl-fruited Sedge (Carex stipata)</i>
 <i>Bebb's Sedge (Carex bebbii)</i>
 <i>Blue Vervain (Verbena hastata)</i>
 <i>Common Arrowhead (Sagittaria latifolia)</i>
 <i>Common Boneset (Eupatorium perfoliatum)</i>
 <i>Common Water Plantain (Alisma subcordatum)</i>
 <i>Common Wood Sedge (Carex blanda)</i>
 <i>Dark Green Rush (Scirpus atrovirens)</i>
 <i>Ditch Stonecrop (Penthorum sedoides)</i>
 <i>Fox Sedge (Carex vulpinoidea)</i>
 <i>Fowl Manna Grass (Glyceria striata)</i>
 <i>Giant Smartweed (Polygonum pensylvanicum)</i>
 <i>Great Blue Lobelia (Lobelia siphilitica)</i>
 <i>Green Coneflower (Rudbeckia laciniata)</i>
 <i>Knobbed Hop Sedge (Carex lupuliformis)</i>
 <i>Missouri Ironweed (Vernonia missurica)</i>
 <i>Monkeyflower (Mimulus ringens)</i>
 <i>New England Aster (Aster novae-angliae)</i>
 <i>Nodding Smartweed (Polygonum lapathifolium)</i>
 <i>Path Rush (Juncus tenuis)</i>
 <i>Pointed Broom Sedge (Carex scoparia)</i> </p> | <p> <i>Prairie Cord Grass (Spartina pectinata)</i>
 <i>Bulrush (Scirpus fluviatilis)</i>
 <i>Sneezeweed (Helenium autumnale)</i>
 <i>Soft-stem Bulrush (Scirpus validus)</i>
 <i>Swamp Milkweed (Asclepias incarnata)</i>
 <i>Switchgrass (Panicum virgatum)</i>
 <i>Torrey's Rush (Juncus torreyi)</i>
 <i>Virginia Wild Rye (Elymus virginicus)</i>
 <i>Wool Grass (Scirpus cyperinus)</i> </p> <p>UPLAND MIX</p> <p> <i>Arrow-leaved Aster (Aster sagittifolius)</i>
 <i>Big-leaved Aster (Aster macrophyllus)</i>
 <i>Black-eyed Susan (Rudbeckia hirta)</i>
 <i>Blue-Stem Goldenrod (Solidago caesia)</i>
 <i>Bottlebrush Grass (Elymus hystrix)</i>
 <i>Brown-eyed Susan (Rudbeckia triloba)</i>
 <i>Calico Aster (Aster laterifolius)</i>
 <i>Canada Wild Rye (Elymus canadensis)</i>
 <i>Columbine (Aquilegia canadensis)</i>
 <i>Culver's Physic (Veronicastrum virginicum)</i> </p> | <p> <i>Elm-Leaved Goldenrod (Solidago ulmifolia)</i>
 <i>Golden Alexander (Zizia aurea)</i>
 <i>Hairy Beard Tongue (Penstemon digitalis)</i>
 <i>Hairy Mountain Mint (Pycnanthemum pilosum)</i>
 <i>Heart-leaved Aster (Aster cordifolius)</i>
 <i>Nodding Fescue (Festuca obtusa)</i>
 <i>Nodding Wild Onion (Allium cernuum)</i>
 <i>Purple Giant Hyssop (Agast. scrofulariaefolia)</i>
 <i>Sedge (Carex molesta)</i>
 <i>Sedge (Carex muhlenbergii)</i>
 <i>Short's Aster (Aster shortii)</i>
 <i>Silky Wild Rye (Elymus villosus)</i>
 <i>Tall Anemone (Anemone virginiana)</i>
 <i>Virginia Wild Rye (Elymus virginicus)</i>
 <i>Wild Geranium (Geranium maculatum)</i>
 <i>Wild Phlox (Phlox divaricata)</i>
 <i>Woodland Brome (Bromus pubescens)</i>
 <i>Wood Sedge (Carex rosea)</i>
 <i>Yellow Coneflower (Ratibida pinnata)</i>
 <i>Yellow Giant Hyssop (Agastache nepetoides)</i>
 <i>Zig-Zag Goldenrod (Solidago flexicaulis)</i> </p> |
|--|---|---|