

Ann Arbor Waterways

Problems and Recommendations from a watershed perspective

Presenter: Paul Steen, Aquatic Ecologist
Huron River Watershed Council

For the consideration of Ann Arbor's City
Council



Huron
River
Watershed
Council



Paddling on Argo Pond



Founded in 1965, HRWC is Michigan's oldest organization dedicated to river protection. HRWC protects and restores the river for healthy and vibrant communities. We are a non-profit with 14 paid staff members and hundreds of volunteers.



Highlights of Ann Arbor's waterways

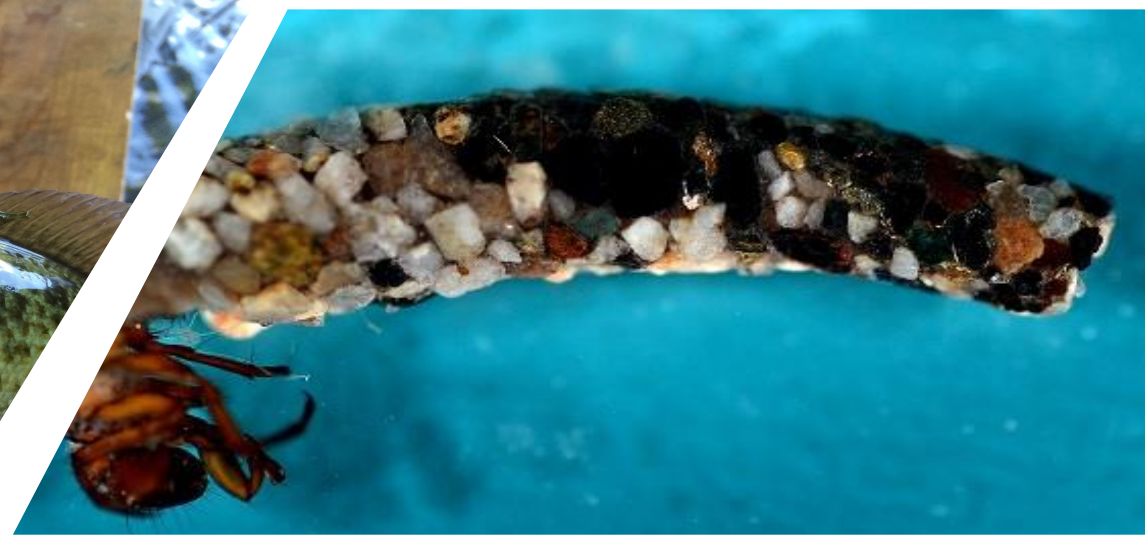
- The Huron River is a natural feature and a centerpiece for our City
 - Parks: Barton, Bird Hills, Kuebler Langford, Hilltop, Argo, Broadway, Riverside, Island, Fuller, Furstenberg, Gallup.... MOST of the Huron borders a city park or city natural area in the city boundaries!
 - Paddling and tubing! River programs and camps. Fishing!



Highlights of Ann Arbor's waterways

- Huron River— provides our drinking water & is needed for sewage treatment and disposal
- Ann Arbor's Creeks--- Traver, Swift Run, Malletts, Millers, Allen...
 - Provide conveyance of stormwater; necessary to keep our infrastructure from crumbling and our streets and basements dry
- We rely on the Huron River system EVERY DAY, and we are all constantly investing in it with time and money.





Highlights of Ann Arbor's waterways

- They are natural systems too – and deserve recognition that they are not here simply for human convenience.
- Our waterways are living ecosystems.



A little background on a “dry” subject

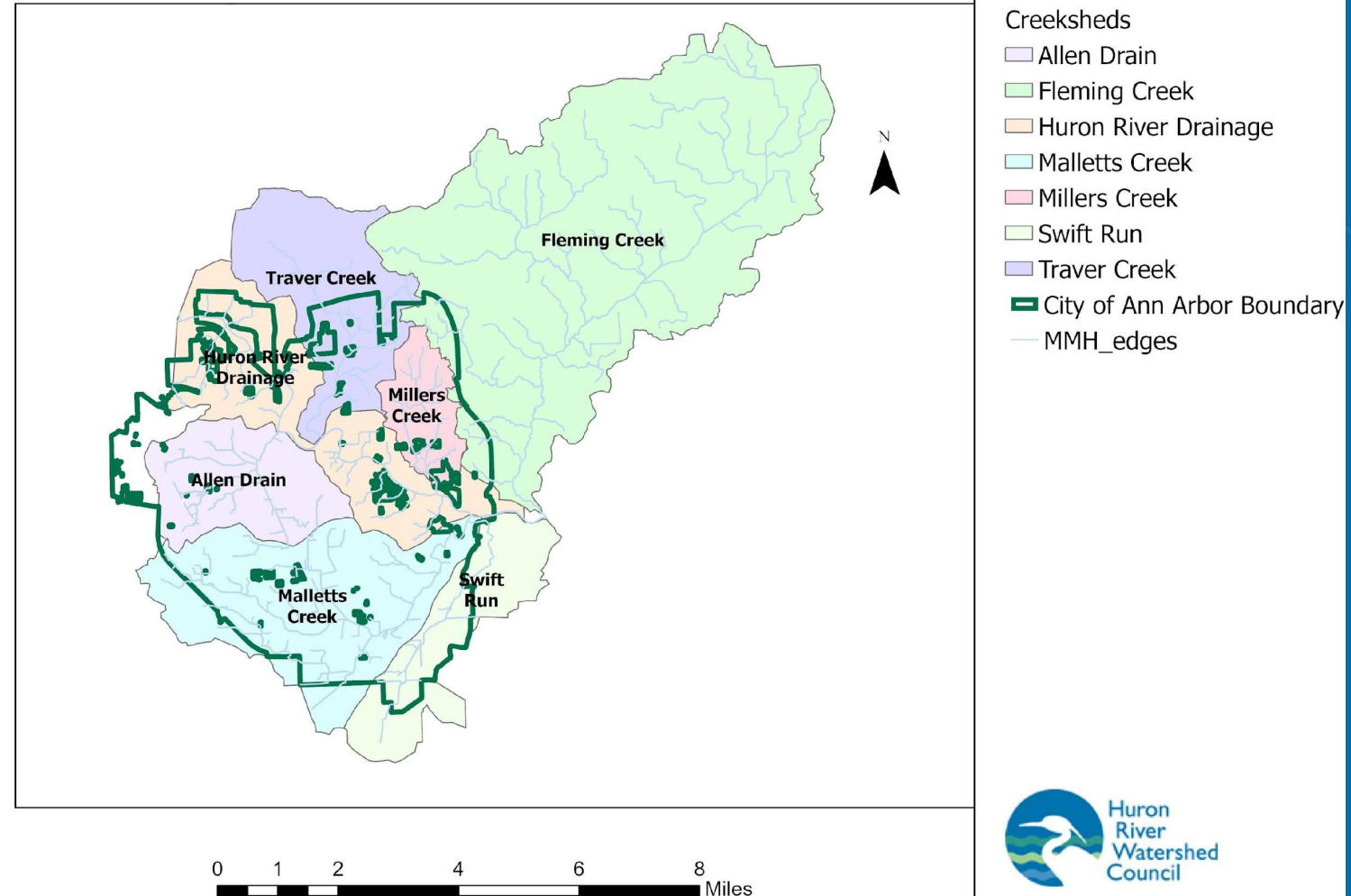
Watershed Management Plans

- Why do them?
- HRWC recent efforts
- What should be happening on Ann Arbor’s creeks and the Huron River over the next 10 years?

Full text of the plan:

<https://www.hrwc.org/what-we-do/programs/watershed-management-planning/middle-huron-WMP-section-2/>

Subwatersheds of the Middle Huron Watershed, section 2



Nutrients, E. Coli, erosion

Fish, insects, habitat,
water flow



Watershed
Management Plans
first require a
compilation of all
known monitoring
efforts

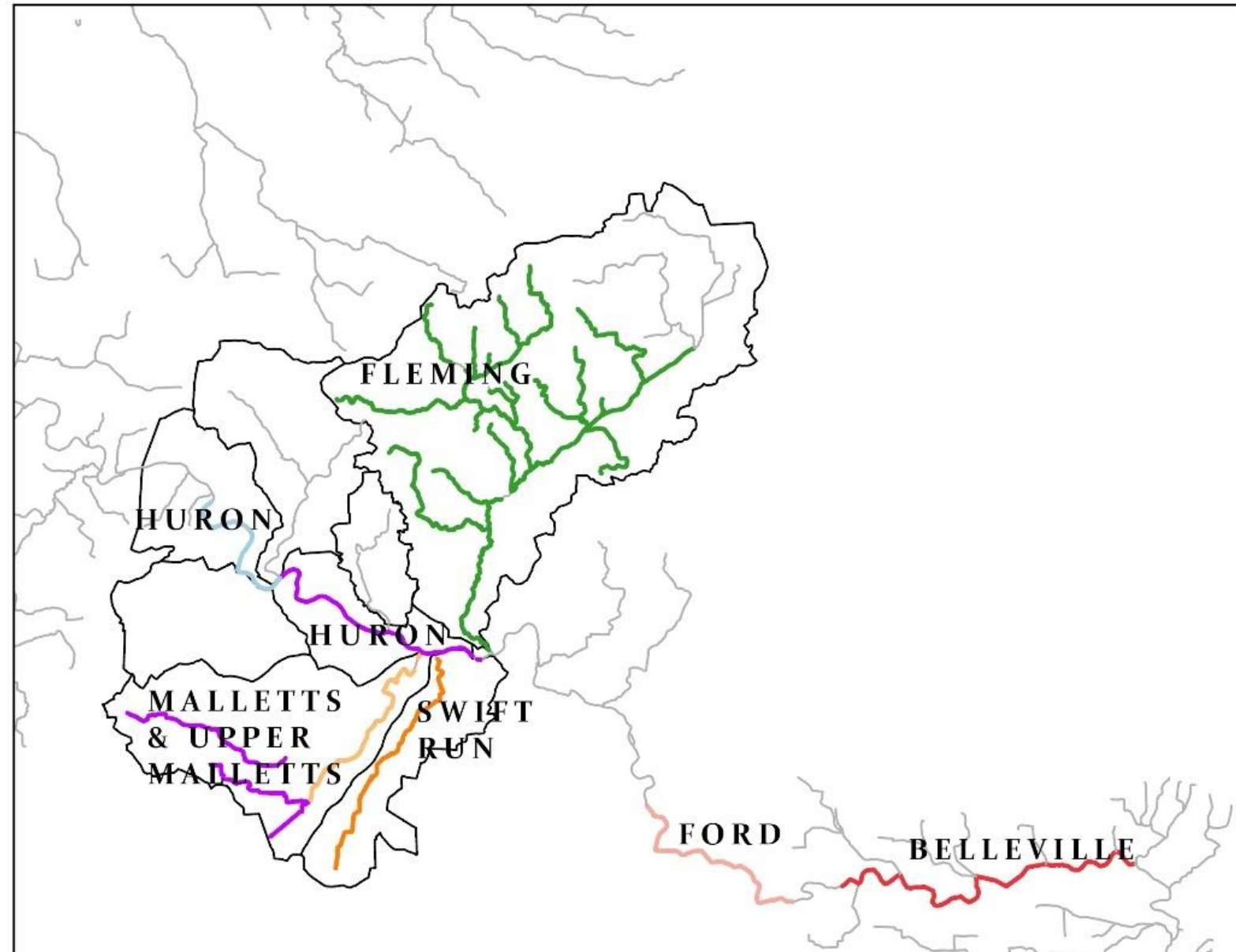


With knowledge of current conditions, the next step is to identify the problem areas.

Designated Uses

1. Industrial water supply
2. Public water supply
3. Navigation
4. Warmwater fishery
5. Fish Consumption
6. Other indigenous aquatic life and wildlife
7. Partial body contact recreation
8. Total body contact recreation between May 1 and October 31

Stream Reaches with Impaired Designated Uses



Swift Run/ Malletts Creek/ Millers Creek– High Priority

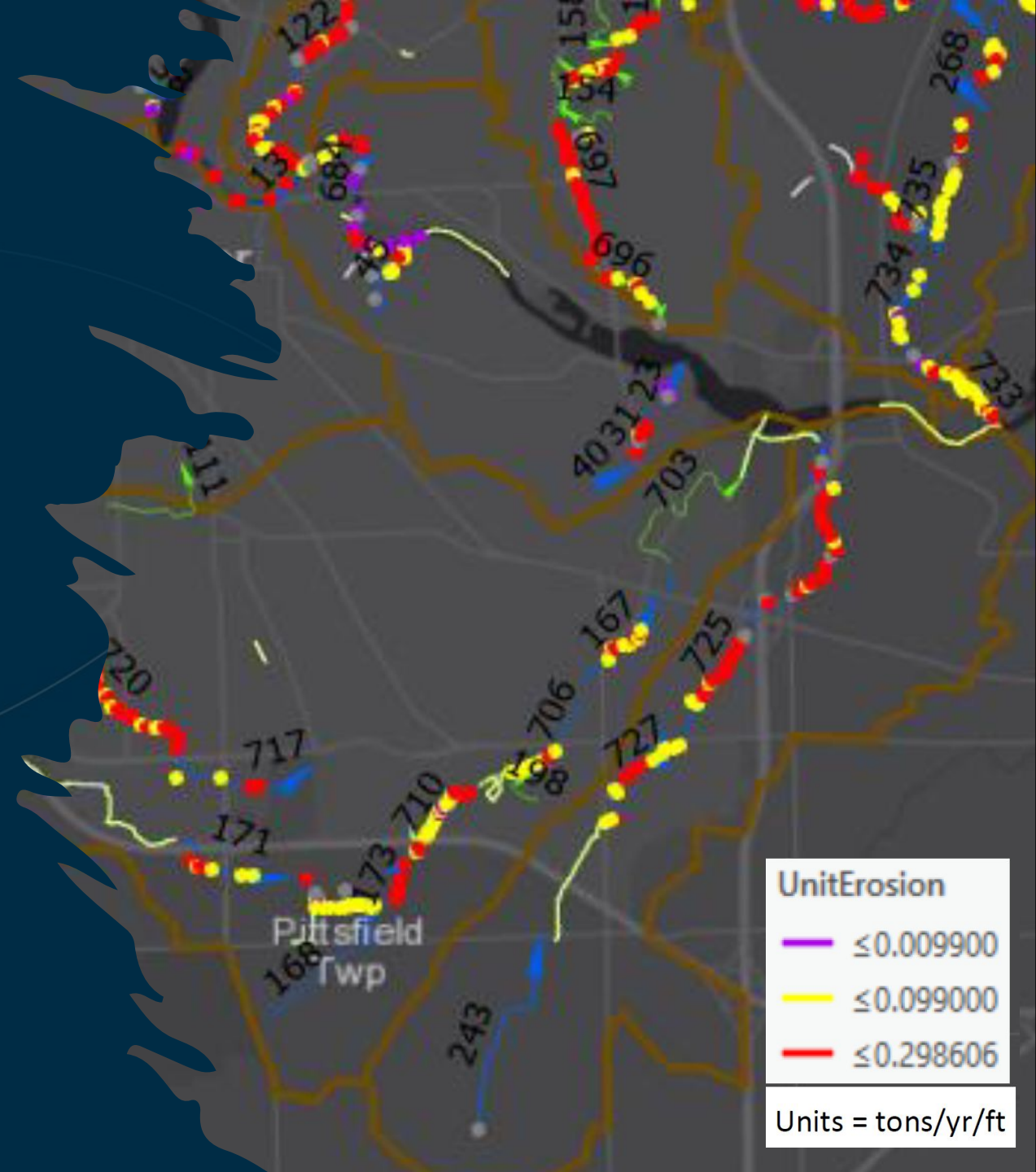
Impairments:

- Total Body Contact Recreation (E. Coli)
- Partial Body Contact Recreation (E.Coli)
- Indigenous Aquatic Life and Wildlife
(Flow Modification, Sedimentation)



Swift Run/Malletts/Millers

- Slow down, infiltrate, treat stormwater
- Stream restoration projects □ stabilize erosive banks
- Targeted Green Streets improvements
- Selected storage and detention projects





Huron River

• Impairment in Fish Consumption

- PFAS Contamination
- Fish Consumption Advisory

Recommendations:

- Targeted Monitoring
- Public Education

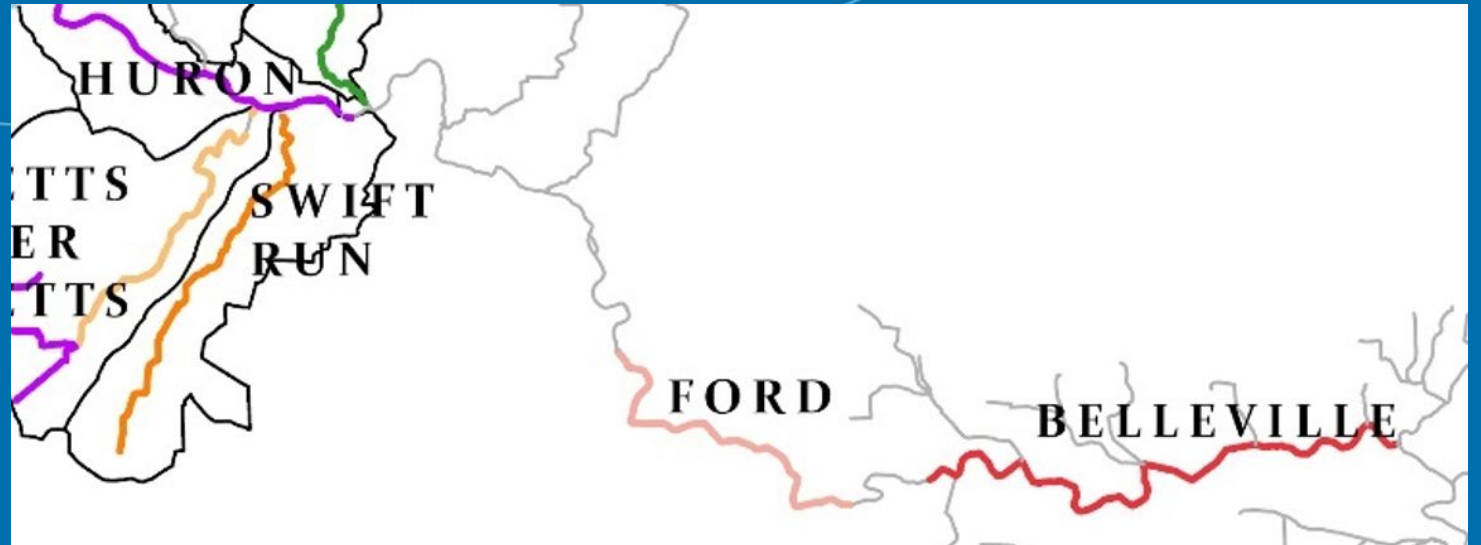


Ford and Belleville Lakes

Impaired for: Indigenous Aquatic Life and Wildlife

Pollutant: Total Phosphorus

- Ann Arbor and the surrounding watershed is under a Total Maximum Daily Load for Phosphorus with the goal of minimizing nutrient inputs into these downstream lakes.
- Be a good neighbor; upstream actions affect downstream communities. This is an ongoing problem requiring ongoing effort.



General Recommendations for improved water quality

- Broader Implementation of Green Stormwater Infrastructure
- Continued public education
- Stormwater management plans
- Pet Waste education and enforcement
- Targeted enforcement of fertilizer law
- Detention pond evaluation, maintenance and retrofitting



**Thank you from
HRWC. Ann Arbor
is a great partner!**

City Council Question Process:

Please send any questions
regarding this presentation
to **Dr. Paul Steen.**

psteen@HRWC.org

