

WELCOME!
*The Meeting Will Begin
Soon.*

A Few Things to Know:

- You can leave and rejoin the meeting at any time.
- Multiple opportunities for input will be provided throughout the meeting.
- The meeting is being recorded.
- Meeting materials and the recording of the meeting will be available at:



New Fire Station 4 Scheffler Park Basketball Court

City of Ann Arbor

WELCOME!

The Fire Station 4 / Scheffler Park Basketball Court Meeting

12:00-1:00 PM

Please use this time to complete an optional, anonymous demographic questionnaire.

Technology Overview – Things to Know

- Attendee video cameras are disabled (we can't see you)
- Attendee screen share is disabled
- All attendees are muted (instructions to unmute will be covered)
- You can leave and rejoin the meeting at any time (unless the meeting is at capacity or you are removed for inappropriate behavior)
- Multiple opportunities for questions will be provided throughout the presentation
- Presentation and additional materials are available at **www.a2gov.org/parkplanning**

Fire



Mike Kennedy
Fire Chief

Parks



Hillary Hanzel, PLA
Landscape Architect /
Park Planner

Support



Heather Seyfarth
City Community
Engagement Specialist

Agenda

- Zoom Technology Overview
- Meeting Norms
- Follow-up Expectations
- Fire Station 4 Project Overview and Schedule
- Review Basketball Court Options
- Questions
- Project Polling
- Wrap-Up!

Technology Overview – Ask a question/share a comment

Computer

- Select **Raise Hand**

- You will be identified by the name provided when you entered the meeting
- Select **Lower Hand** if needed

Q&A:

Type your question

Check **Send**

Anonymously if you do not want your name to be publicly visible with your Question

Click **Send**

Phone

- Select *9 to raise your hand
- You will be identified by the last 3 digits of your phone number



Meeting Norms

- Commit to learning and avoid speculation – we encourage you to ask questions so we can explore the issue together.
- Please remember the importance of rights and the dignity of others. With that, we ask that you:
 - Critique ideas, not people.
 - Are thoughtful about your language so this can be a comfortable and respectful forum for all participants - inappropriate written and/or verbal comment or language, including personal attacks and accusations, will result in the attendee being removed from the meeting.

Demographics Poll



Meeting Goals

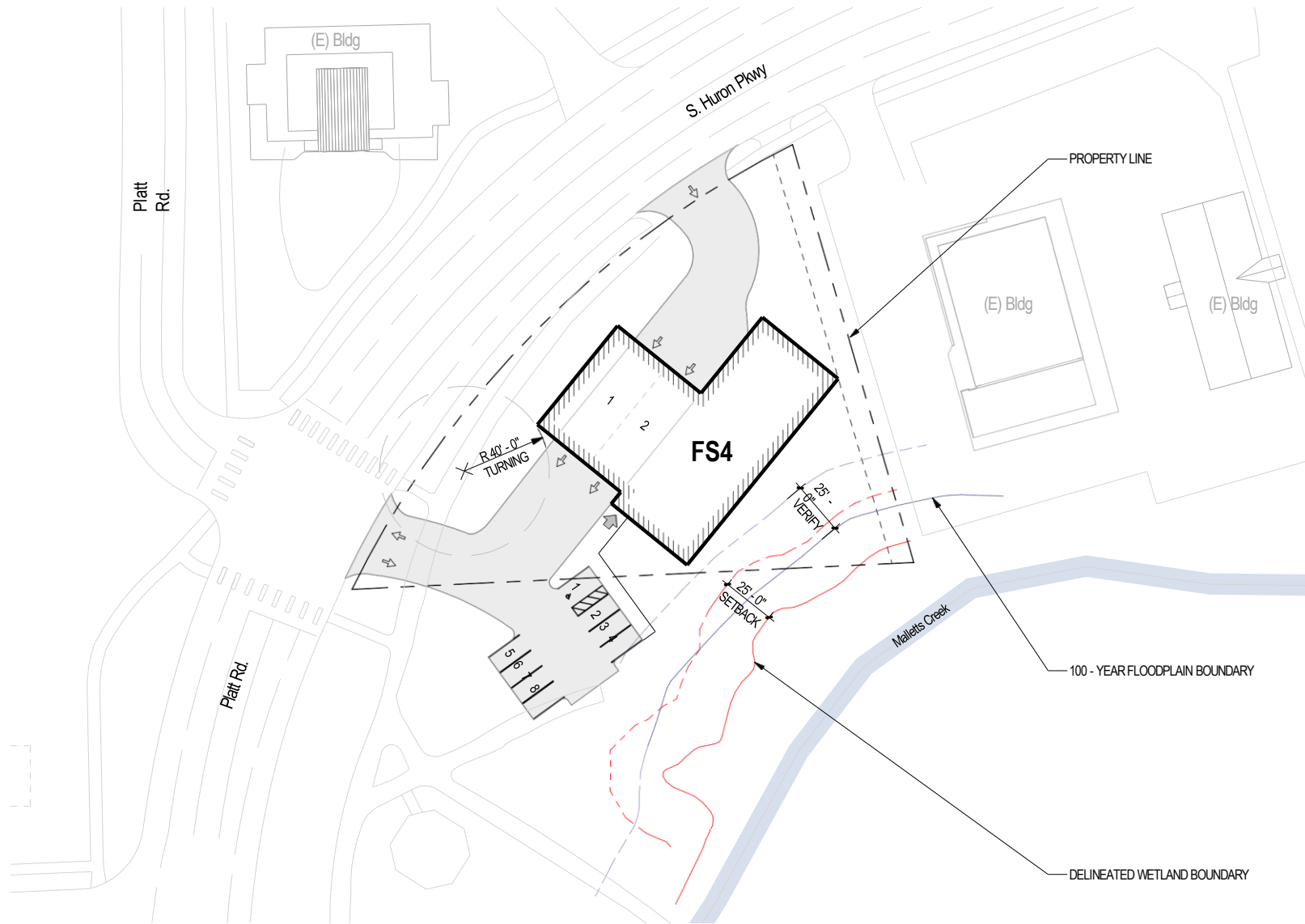
1. Share information about future Fire Station 4 project and impacts to Scheffler Park basketball court
2. Discuss options for relocating basketball court in Scheffler Park
3. Opportunity for community to share comments, concerns, and ideas

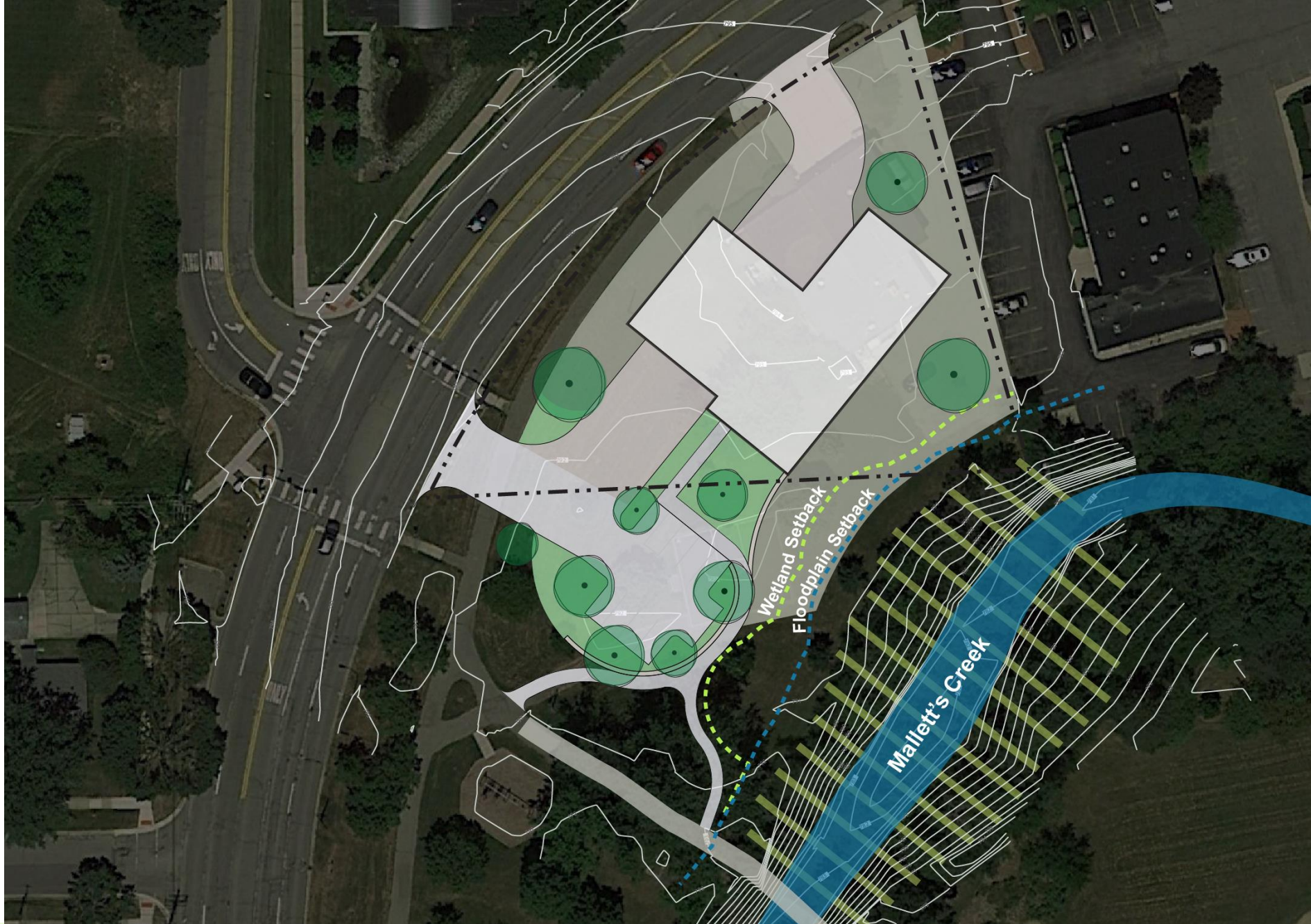














Proposed Fire Station

Alternative Locations
for Proposed
Basketball Court

Preferred

Fencing

0 25 50 100 feet

Scale: 1" = 50'-0"







Scheffler Park Basketball Court

- The basketball court in Scheffler Park will be built as regulation size for Junior High School basketball (74' long by 42' wide)
- The basketball court will be constructed with asphalt surfacing with color coating and striping approved by the City of Ann Arbor Parks Department.
- Fencing is desired between the proposed basketball court and an existing street or parking lot.



Proposed Fire Station

Alternative Locations
for Proposed
Basketball Court

Preferred

Fencing

0 25 50 100 feet

Scale: 1" = 50'-0"



Preferred Option - Existing Roller Hockey Court

- Will fit on the footprint of the existing Hockey Court and not involve much expansion of the pavement area from what is already there. It is also slightly higher and well drained.
- Fencing would be included between the basketball court and Edgewood Drive.
- The east-west orientation of the court is less desirable due to the potential of morning or late afternoon sun being in the eyes of the shooting player, however the existing trees in this area should lessen the sun's impact.
- If coating were not added, the court could accommodate both basketball and roller hockey.
- Does not impact other park uses.



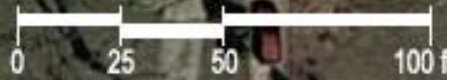
Alternative Locations for Proposed Basketball Court

Alternative 1

Alternative 2

Preferred

..... Fencing



Scale: 1" = 50'-0"





Alternative 2



Alternative 1

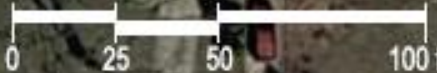


Preferred



Alternative Locations
for Proposed
Basketball Court

..... Fencing



Scale: 1" = 50'-0"



Alternative Locations for Proposed Basketball Court

Alternative 2



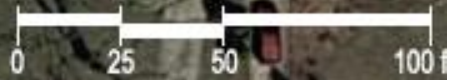
Alternative 1



Preferred



..... Fencing





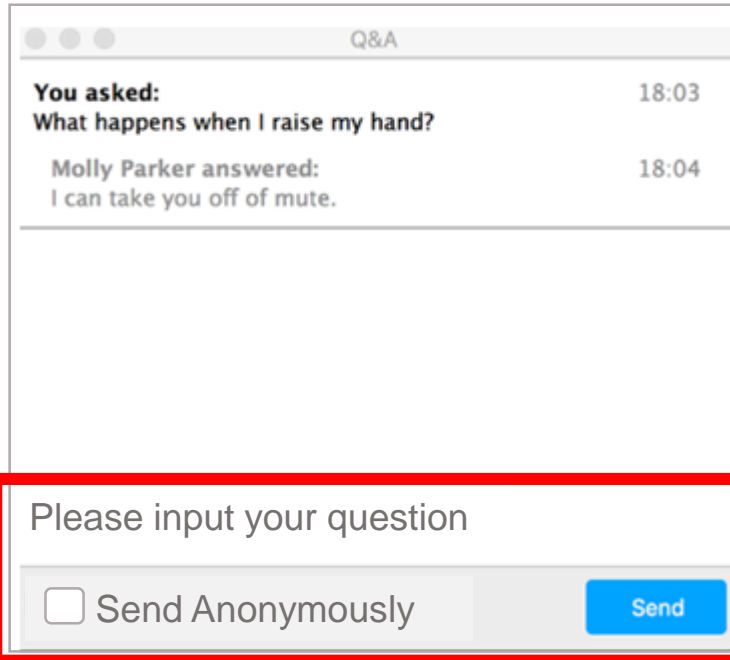
Scale: 1" = 50'-0"

Questions

Note: When you raise your hand, the host will enable your microphone. The host will disable your microphone after your question.

Computer

- Select **Raise Hand** 
 - You will be identified by the name provided when you entered the meeting
 - Select **Lower Hand**  if needed
- **Q&A:**
 - Type your question
 - Check **Send Anonymously** if you do not want your name to be publicly visible with your Question
 - Click **Send**



Phone

- Select *9 to raise your hand
- You will be identified by the last 3 digits of your phone number



Questions?

1. Thoughts/comments on location of basketball court over existing roller hockey court?
2. Questions/comments about Fire Station 4
3. Other comments about the rest of Scheffler Park

Next Steps:

1. Meeting summaries and a recording will be posted on the Fire Department website and emailed to participants who provided an email address.
2. Project team will select a basketball site and that location will be included in the plan that is submitted for Site Plan approval.
3. Await funding for Fire Station 4 improvements.

Parks Online Survey

Park and Recreation Open Space Master Plan (PROS Plan) is asking the community for feedback on the future of the Ann Arbor Parks. **The survey closes on June 5th.**

We invite the community to participate in an online survey at:
www.opentownhall.com/11734

There is also a link on the City's Park Planning webpage:
www.a2gov.org/ParkPlanning

Survey should take approximately 10 minutes to complete and there is an optional anonymous demographic section.

Contact information

PARKS AND RECREATION:

Hillary Hanzel
Park Planner & Landscape
Architect

hhanzel@a2gov.org

FIRE DEPARTMENT:

Mike Kennedy
Fire Chief

mkennedy@a2gov.org



THANK YOU
