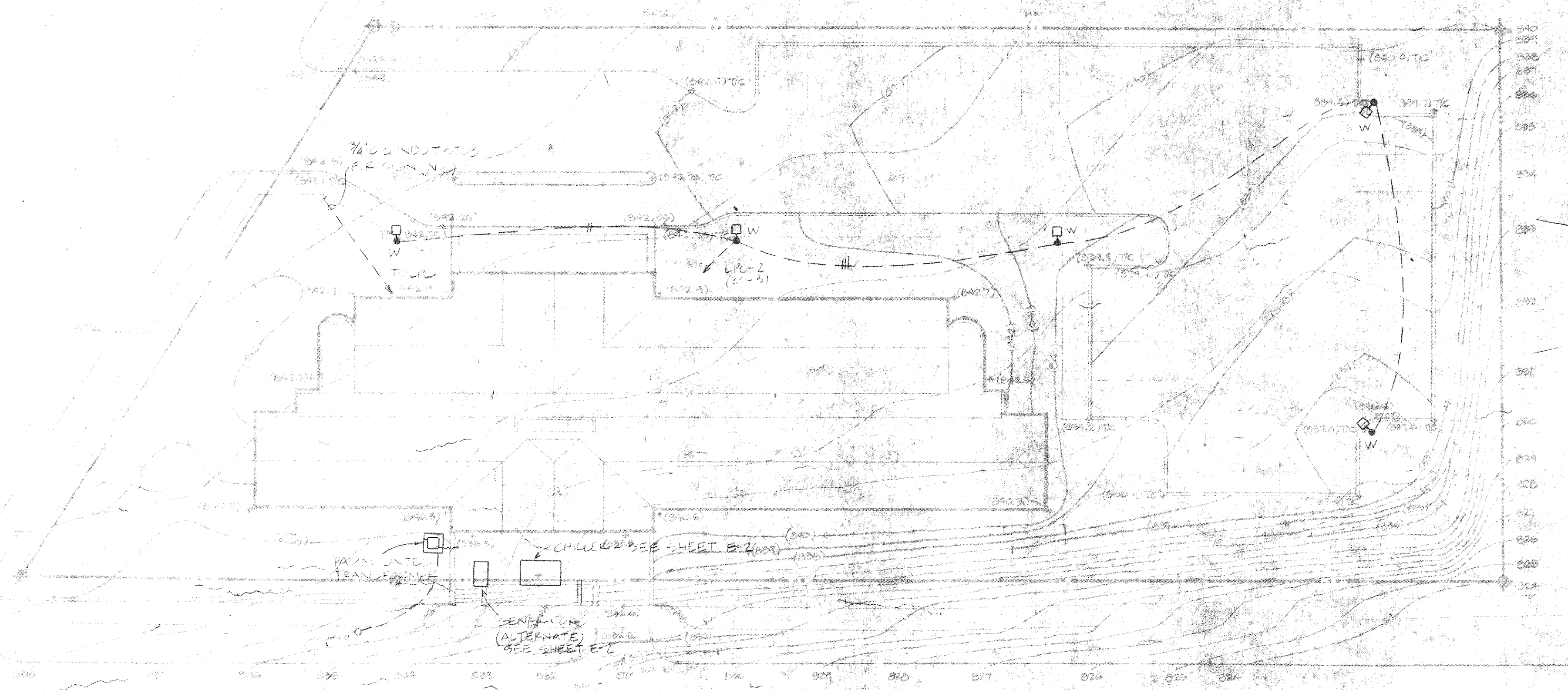
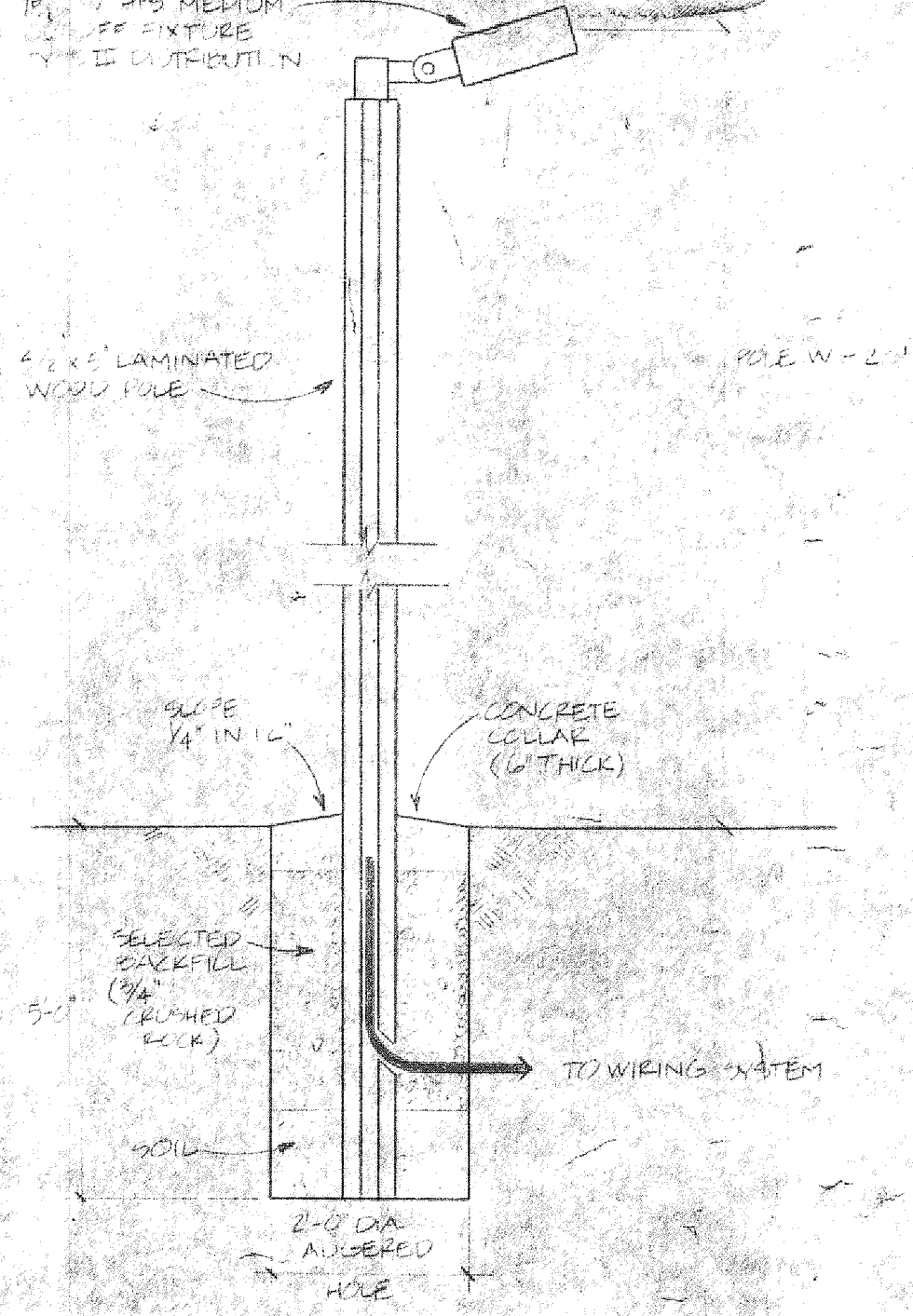


WALKWAY ROAD



ELECTRICAL SITE PLAN

SCALE 1" = 20'

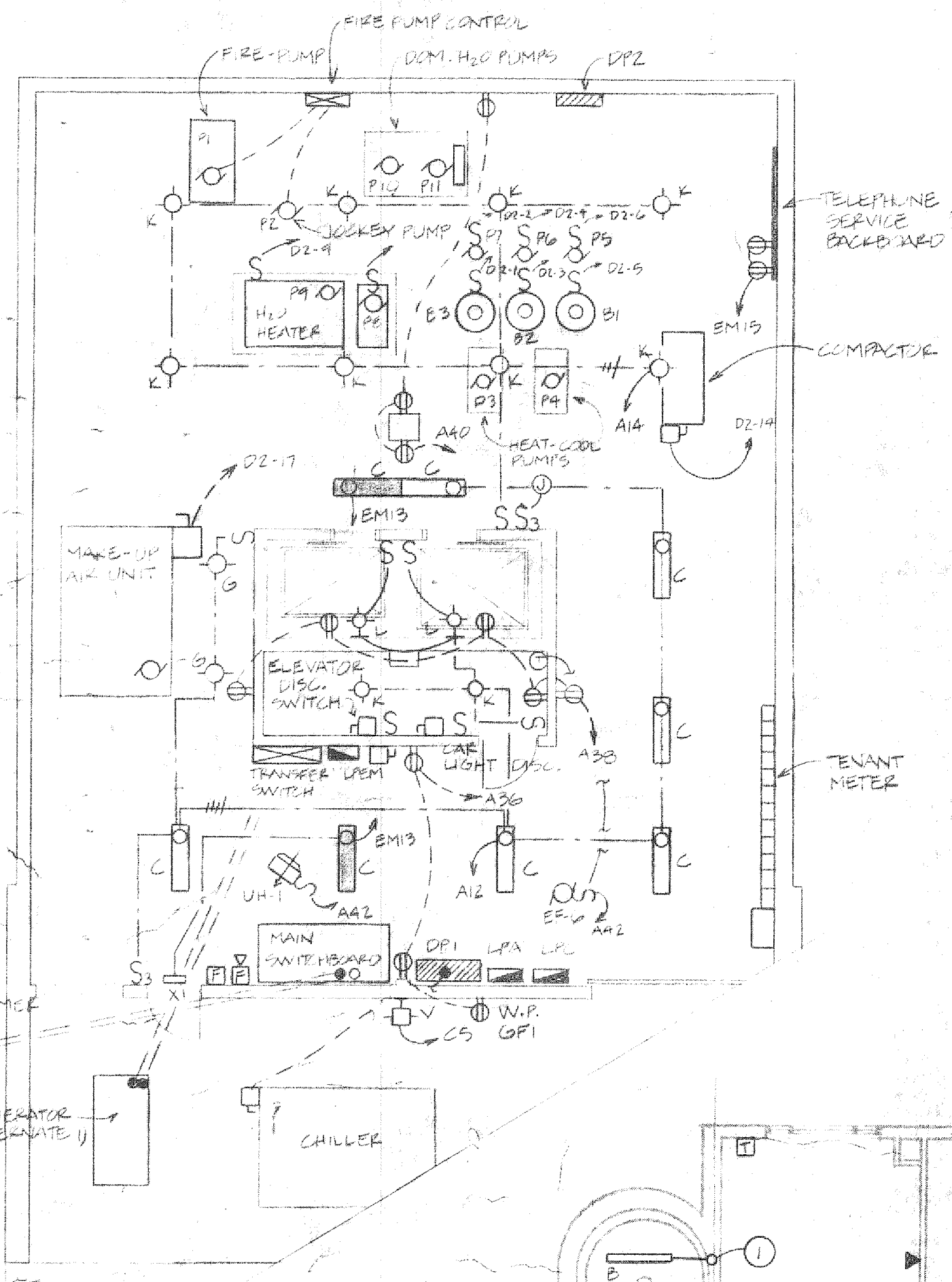


SITE LIGHTING DETAIL

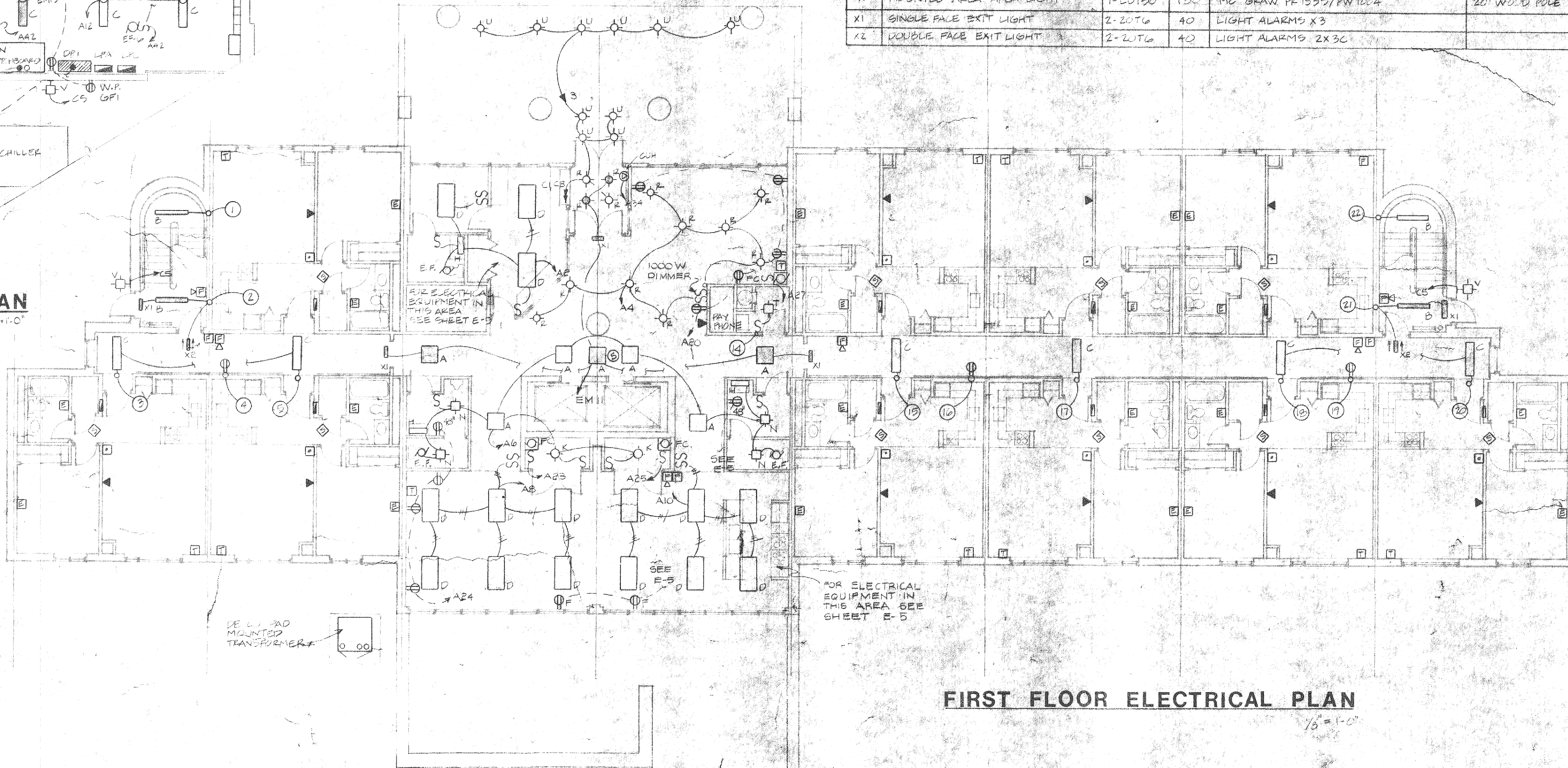
NO SCALE

ELECTRICAL SYMBOLS

- | | | | |
|--|--|--|---|
| | FLUORESCENT FIXTURE | | DISCONNECT SWITCH |
| | FLUORESCENT FIXTURE - NIGHT LIGHT NOT SWITCHED | | MAGNETIC STARTER |
| | INCANDESCENT FIXTURE | | COMBINATION MAGNETIC STARTER |
| | INCANDESCENT WALL BRACKET | | MOTOR |
| | EXIT LIGHT - TYPE & ARROW INDICATED | | MOTOR CONTROL STATION |
| | LIGHTING PANEL | | THERMOSTAT |
| | POWER PANEL | | TELEPHONE |
| | DUPLEX RECEPTACLE | | TELEVISION OUTLET |
| | DUPLEX WEATHERPROOF | | DOOR INTERCOM STATION |
| | DUPLEX FLOOR MOUNTED | | EMERGENCY CALL PULL STATION |
| | CLOCK HANGER RECEPTACLE | | JUNCTION BOX |
| | FLOOR STUB FOR EQUIPMENT | | FIRE ALARM STATION |
| | UNIT VENTILATOR | | FIRE ALARM HORN |
| | ELECTRIC BASEBOARD | | SMOKE DETECTOR |
| | DRYER RECEPTACLE | | HEAT DETECTOR |
| | RANGE RECEPTACLE | | MAGNETIC DOOR HOLDER |
| | ELECTRIC WATER COOLER | | RESIDENCE SMOKE DETECTOR/ALARM |
| | SWITCH | | EMERGENCY LIGHTING UNIT - NUMERICAL INDICATES NUMBER OF LAMPS MOUNTED ON UNIT |
| | SWITCH - TWO POLE | | TIME CLOCK |
| | SWITCH - THREE WAY | | EXHAUST FAN |
| | SWITCH - FOUR WAY | | PHOTOELECTRIC CONTROL |
| | DIMMER SWITCH | | CONTACTOR |
| | LOW VOLTAGE CONTROL SWITCH | | |



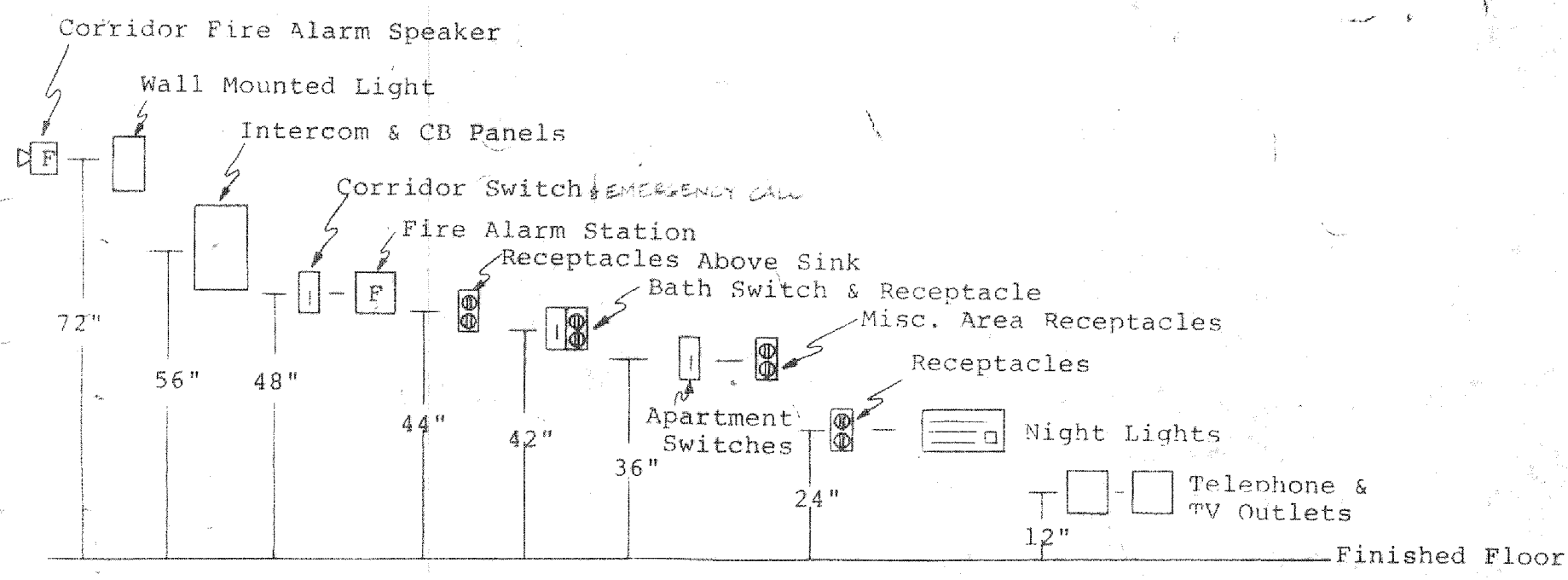
BASEMENT ELECTRICAL PLAN
1/8" = 1'-0"



FIRST FLOOR ELECTRICAL PLAN
1/8" = 1'-0"

LIGHTING FIXTURE SCHEDULE

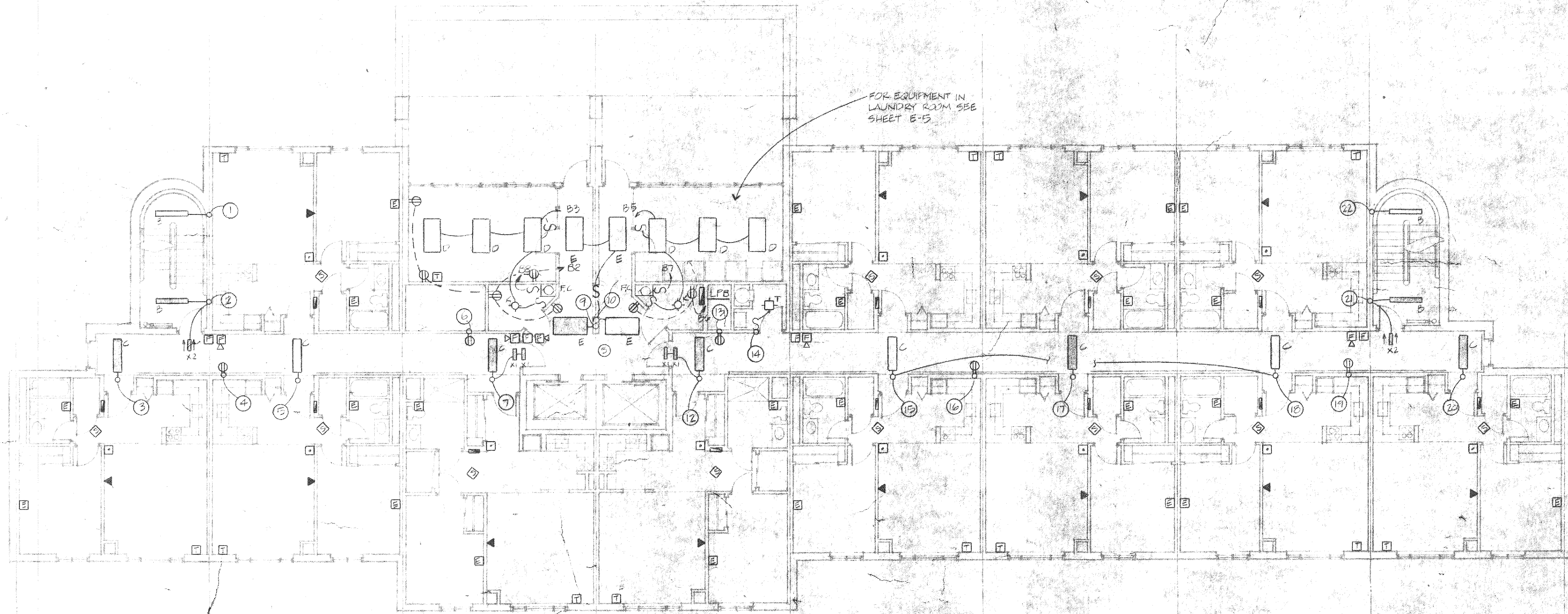
type	brief description	lamps	fixture watts	manufacturer & catalog number	remarks
A	2x2' RECESSED FLUORESCENT	2-F40 UT12	96	LITHONIA ZGS 2U40 A12 or METALUX ZGS2UA	
B	1'x4' SURFACE FLUORESCENT	1-F40 WM	40	LITHONIA CD140A	
C	1'x4' SURFACE FLUORESCENT	2-F40 WM	80	LITHONIA VC140A	
D	2'x4' RECESSED FLUORESCENT	4-F40 WM	160	LITHONIA ZGS 440 A12 or METALUX ZGS-440A	
E	2'x4' SURFACE FLUORESCENT	4-F40 WM	80	LITHONIA ZM240M12 or METALUX ZM240A	
F	UNDER CABINET FLUORESCENT	1-F10 T12	24	PROGRESS P100T or ROBERT UC-20-UTS	
G	PARC. KEYLESS LAMPHOLDER	1-15 A21	150	CIRCLE F 210-0	
H	WALL MOUNTED FLUORESCENT	2-F20 T12	48	DAYRITE A3220W	
J	WALL MTD. INCANDESCENT	1-100 A21	100	HALO 2312	
K	RLM INCANDESCENT	1-150 A21	150	APPLETON 65254	
L	INC. WALL BRACKET	1-100 A19	100	APPLETON DBWW-206	ELEVATOR PIT
M	OVER MIRROR WALL BRACKET	4-60 A19	240	KICHLER K195B or SEAGULL 4455-15	
N	SURFACE INC. DRUM	2-60 A19	120	HALO H210 or SEAGULL T1610-33	
P	SURFACE INC. DRUM	3-60 A19	180	HALO H216 or SEAGULL T1614-33	
Q	THRU WALL INCANDESCENT	1-75 A19	75	HALO H1400	
R	RECESSED INCANDESCENT ROUND	1-100 A19	100	HALO H7-416	
T	SURFACE INC. SQUARE	2-60 A19	120	ACME DUNBAR 4011L	
U	RECESSED HQ ROUND	1-100 B23	120	MC PHILBEN 27M 2232 PF	
V	WALL MOUNTED AREA LIGHT	1-LU70	100	MC GRAW PHOENIX W	
W	MOUNTED AREA AREA LIGHT	1-LU150	150	MC GRAW FE 1333/PW1004	20' WOOD POLE
X1	SINGLE FACE EXIT LIGHT	2-20 T6	40	LIGHT ALARMS X3	
X2	DOUBLE FACE EXIT LIGHT	2-20 T6	40	LIGHT ALARMS 2X30	



MOUNTING HEIGHT DETAIL

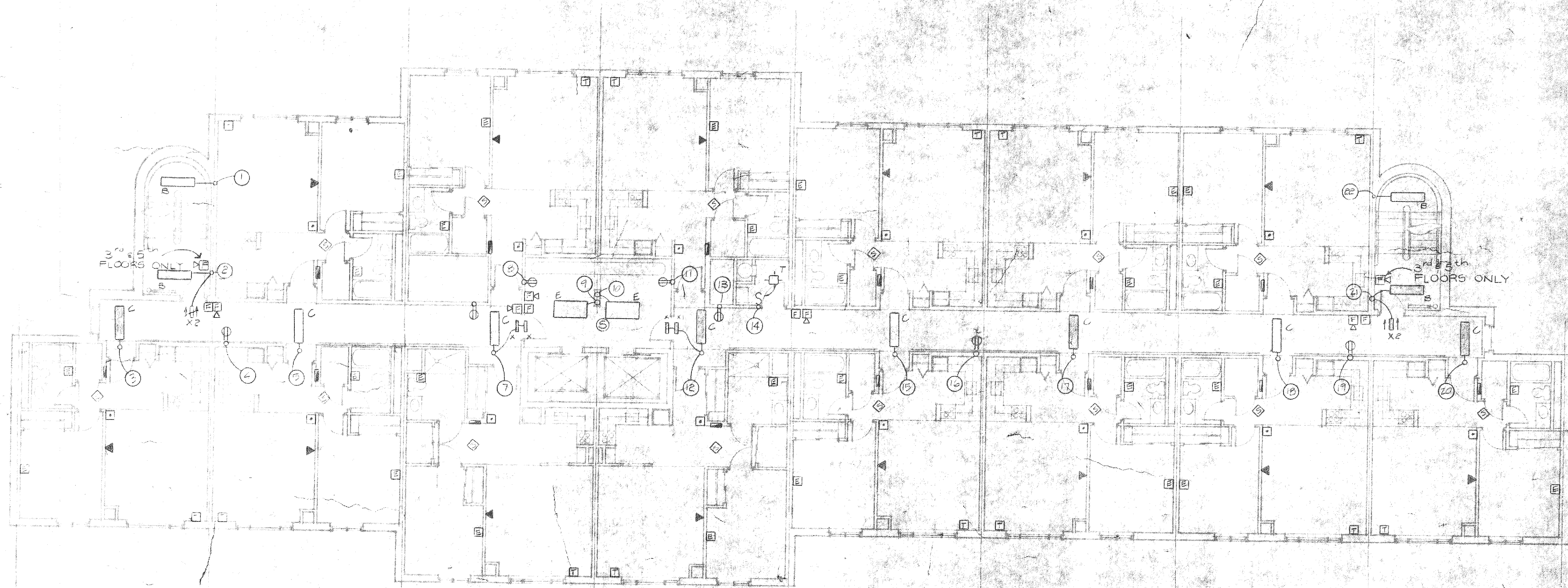
CORRIDOR, LOBBY, HALL & STAIR RISERS

	1	2	3	4	5	6	7	8	9	10	11	12	13	14	15	16	17	18	19	20	21	22
5TH FLOOR	↑	↑	↑	↑	↑	↑	↑	↑	↑	↑	↑	↑	↑	↑	↑	↑	↑	↑	↑	↑	↑	↑
4TH FLOOR	↑	↑	↑	↑	↑	↑	↑	↑	↑	↑	↑	↑	↑	↑	↑	↑	↑	↑	↑	↑	↑	↑
3RD FLOOR								B4		B4												
2ND FLOOR						A7	EM5		EM7	B1		EM2	A9									
1ST FLOOR	A1	EM1	EM3	A3	A5									A11	A13	A15	EM4	A13	A17	EM6	EM8	A17



SECOND FLOOR ELECTRICAL PLAN

1/8" = 1'-0"

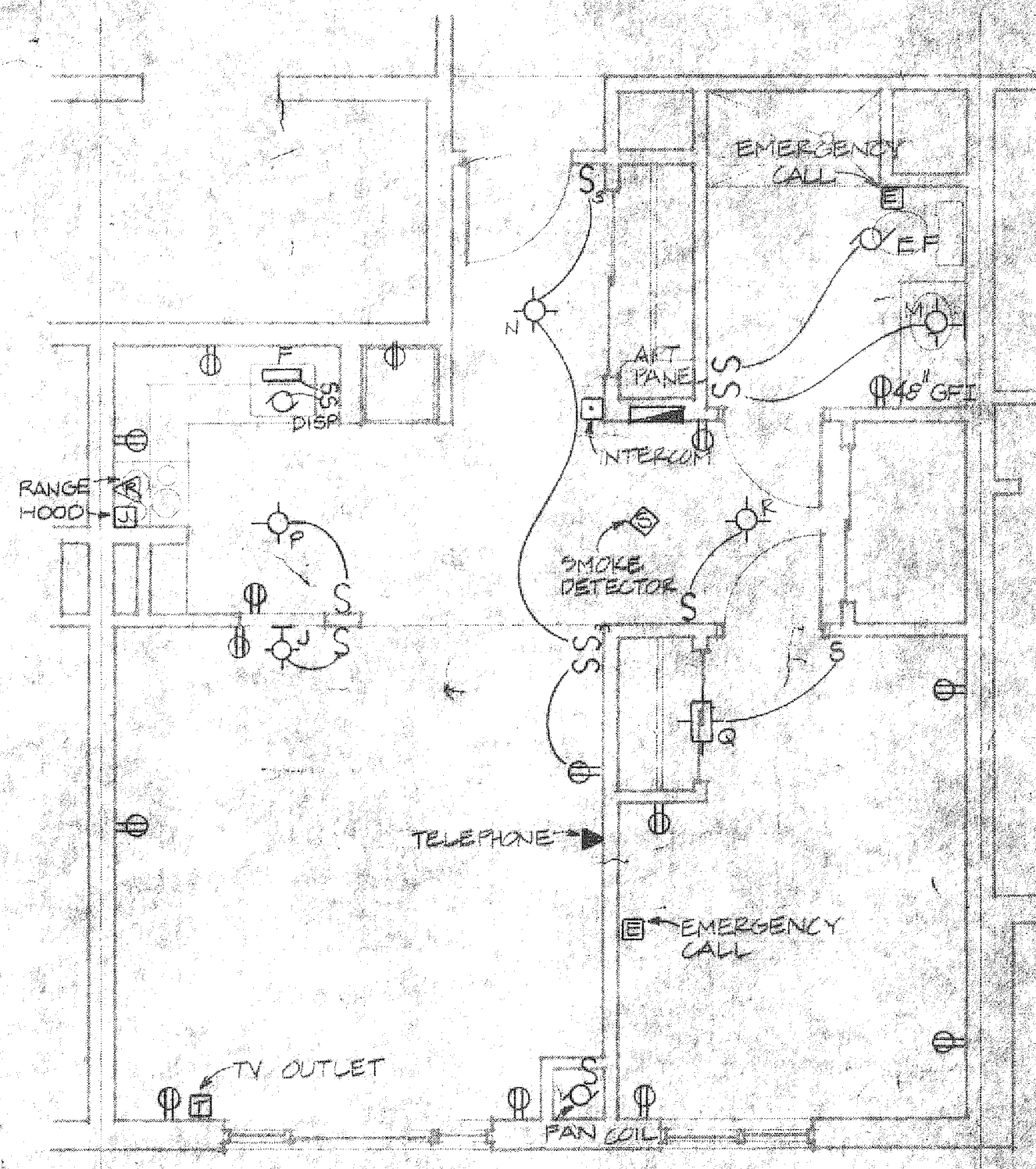
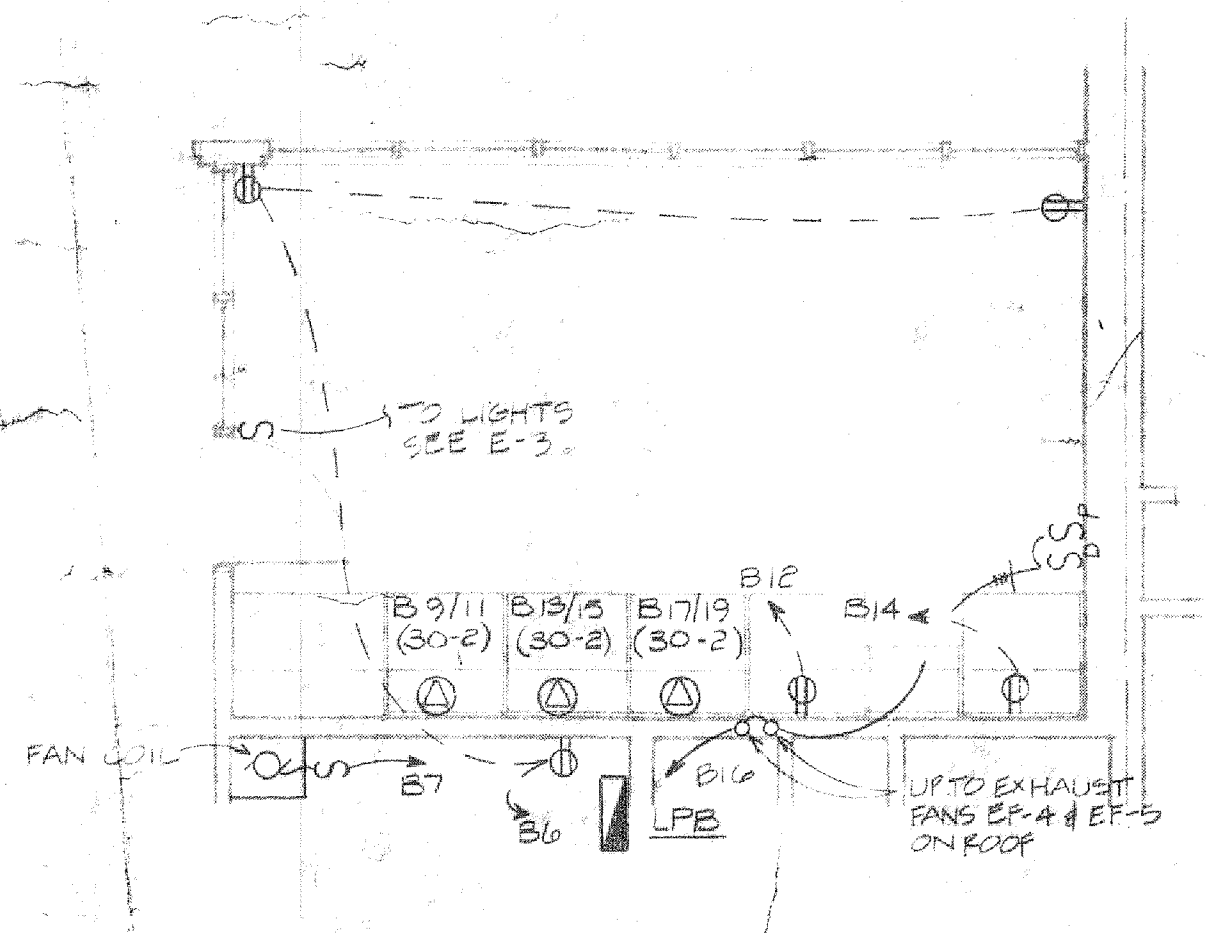
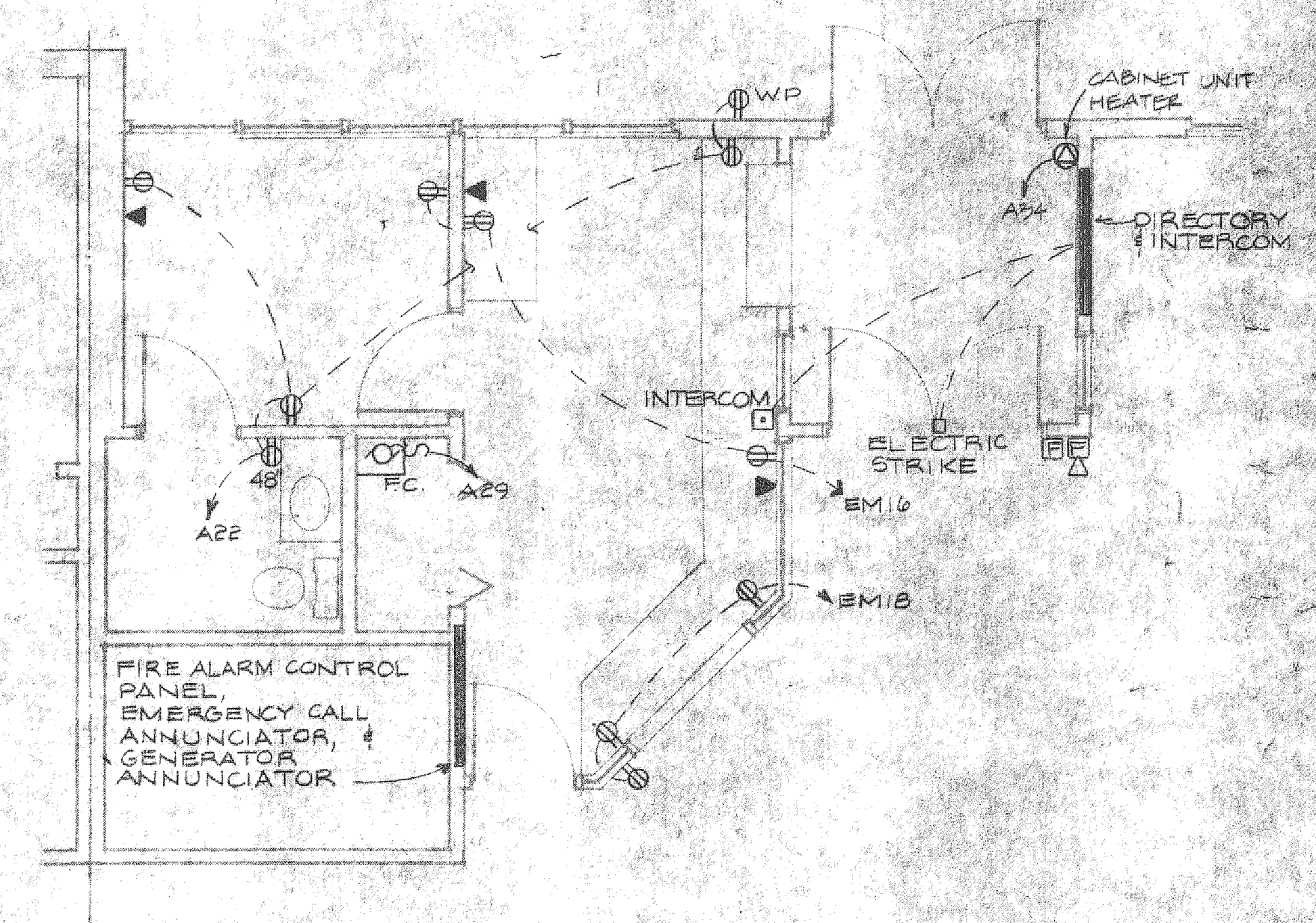
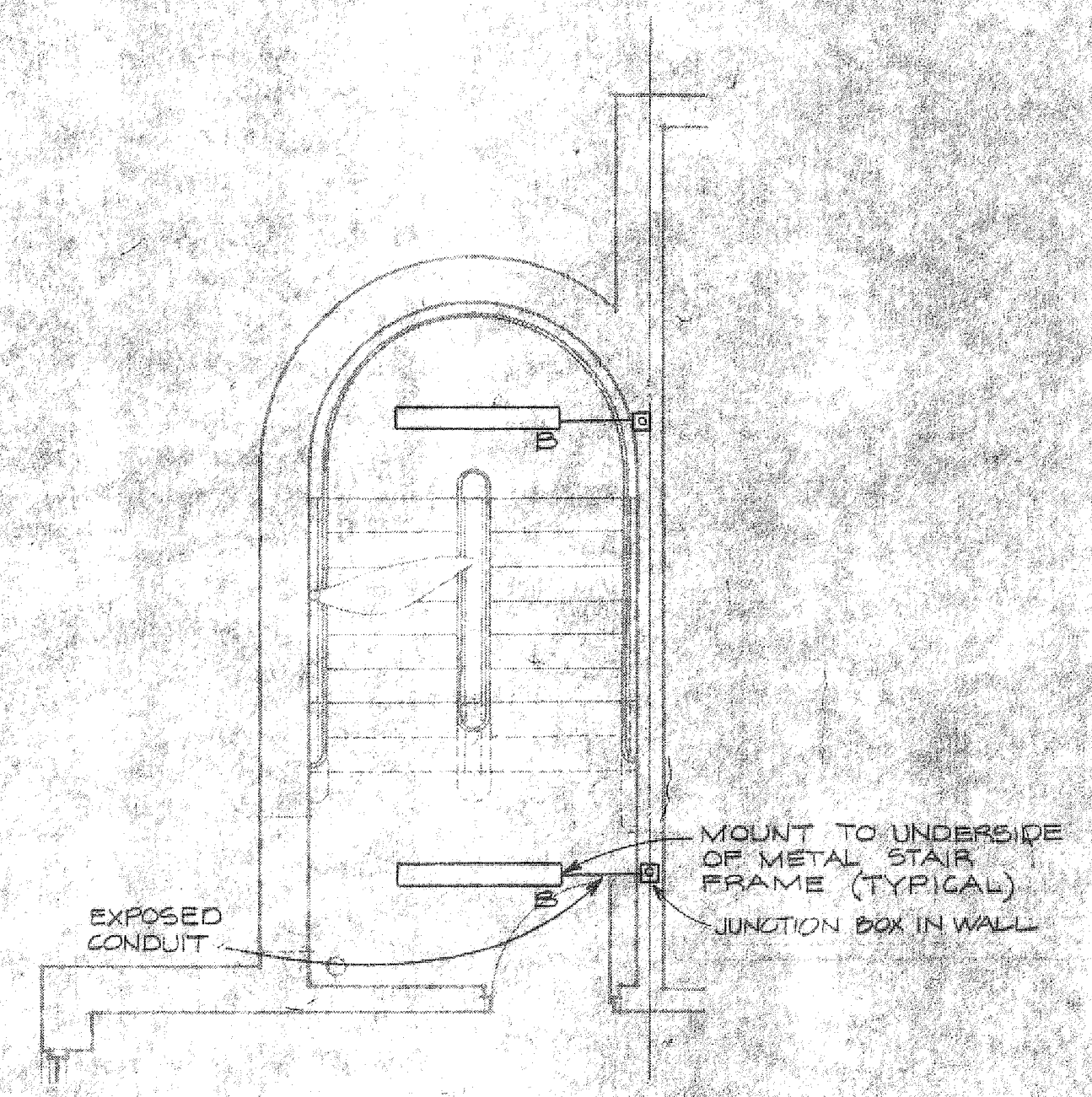
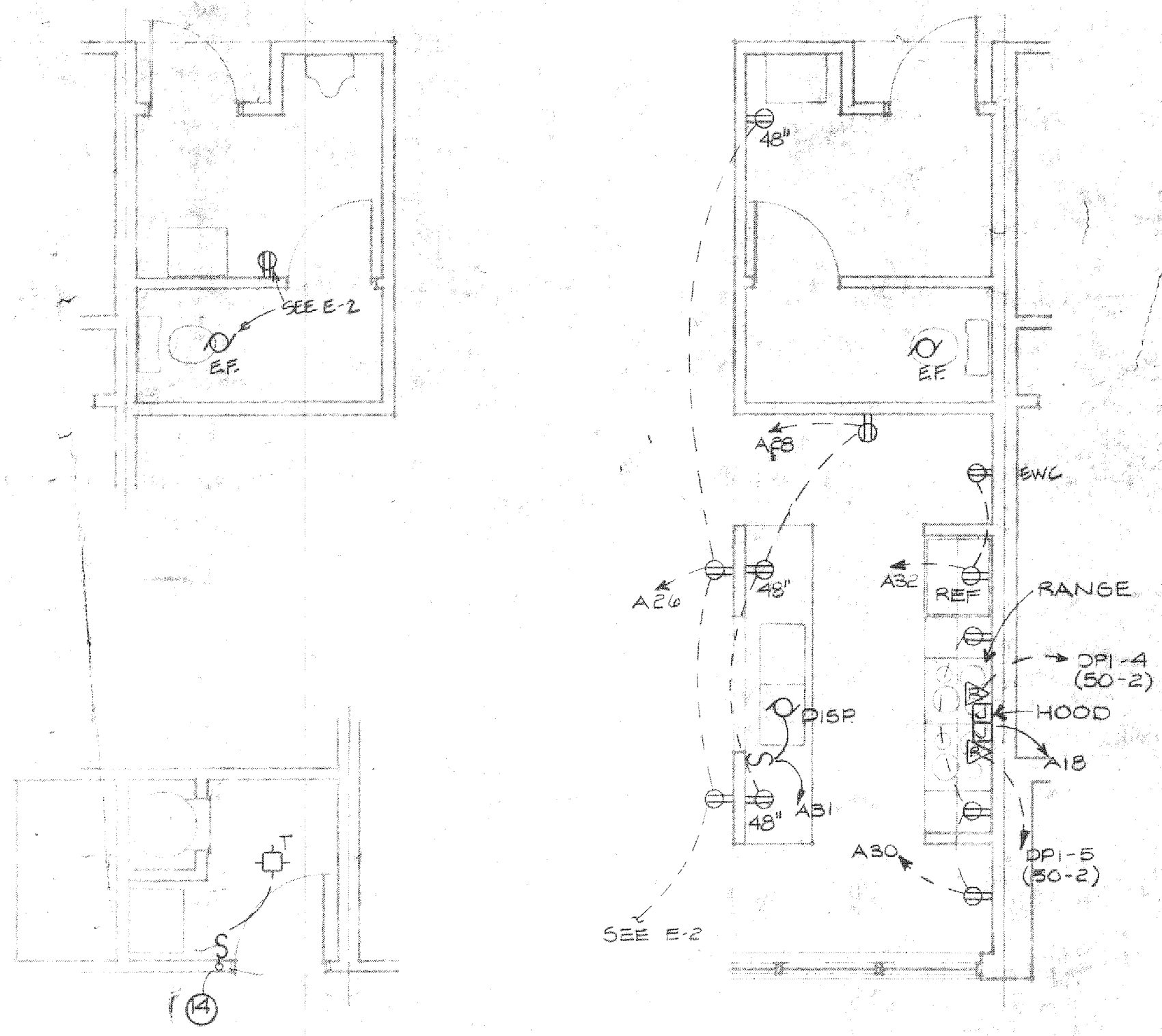


TYPICAL FLOOR ELECTRICAL PLAN

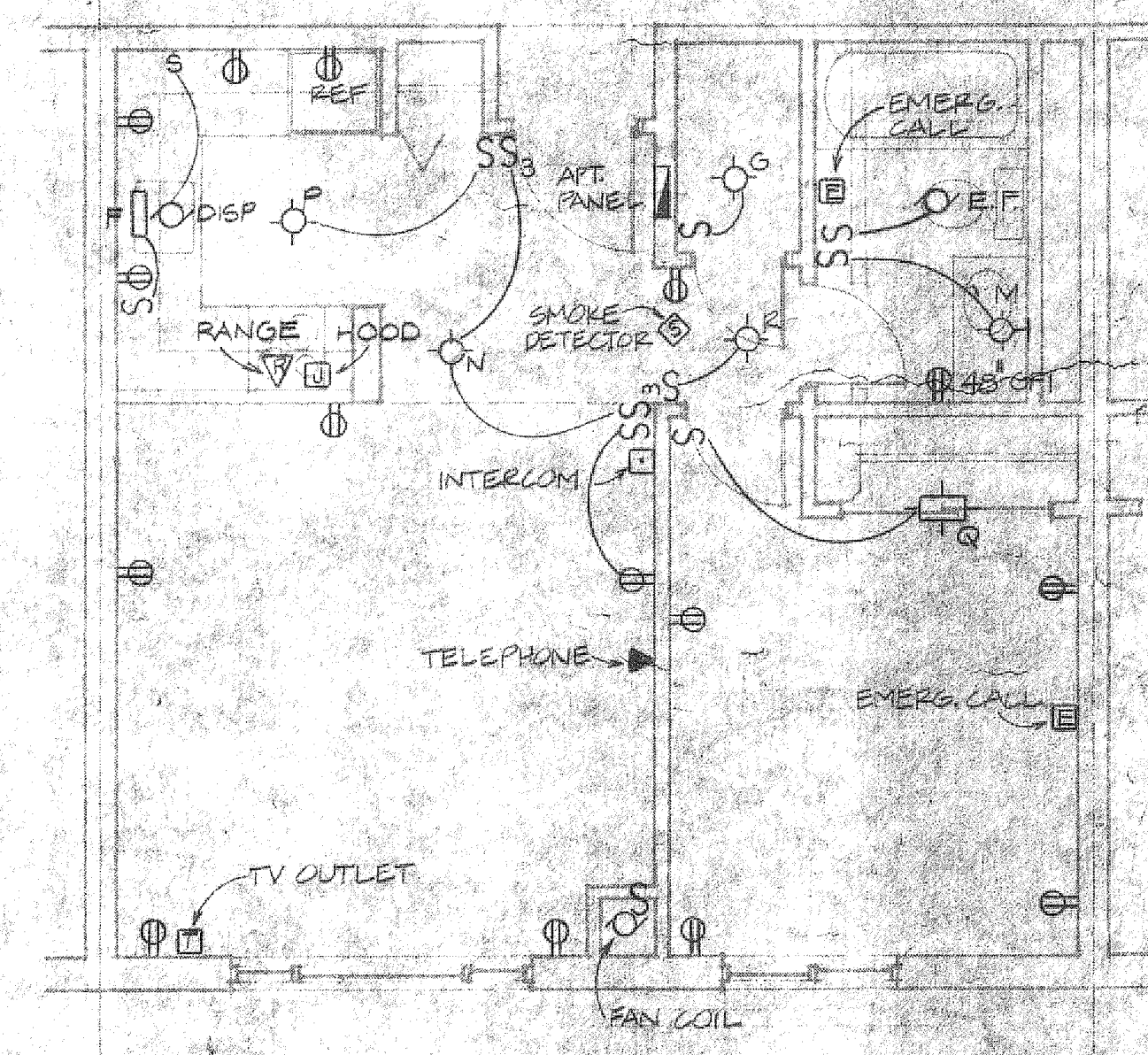
1/8" = 1'-0"

3rd & 5th FLOORS ONLY

3rd & 5th FLOORS ONLY



HANDICAPPED LIVING UNIT



TYPICAL LIVING UNIT

NOTE: UNITS 101-50 114-514 HAVE HEAT/FAN COIL IN BATH FROM TIMER SWITCH WALL FOR HEAT

APARTMENT PANEL SCHEDULE			
FLUSH MOUNTED		100A MAIN LUGS	
ckt.	description	description	ckt.
1	20A, 1P KITCHEN-APPLIANCE	20A, 1P GARBAGE DISPOSAL	2
3	20A, 1P KITCHEN-APPLIANCE	15A, 1P FAN COIL	4
5	5A, 1P SMOKE DETECTOR	50A, 2P RANGE	6
7	15A, 1P BEDROOM		8
9	15A, 1P MISC LIGHTING		10
11	15A, 1P LIVING ROOM		12

DISTRIBUTION PANEL SCHEDULE

Panel/breaker rating	load description	connected load kva
SWITCHBOARD 1600A, MLO: 120/208V THREE PHASE, FOUR WIRE		
30A, 3P	TENANT METERS*	230.0
20A, 3P	DISTRIBUTION PANEL DP-1	170.5
20A, 3P	DISTRIBUTION PANEL DP-2	33.5
10A, 3P	FIRE PUMP	44.0
20A, 3P	EMERGENCY SERVICE	55.3
TOTAL		

600A MAIN LUGS 120/208V, 3Ø, 4W		
30A, 3P	LIGHTING PANEL LPA	29.3
20A, 3P	LIGHTING PANEL LPB	25.4
20A, 3P	LIGHTING PANEL LPC	5.4
20A, 2P	RANGE	9.0
20A, 2P	RANGE	9.0
20A, 3P	AIR COOLED CHILLER	96.4
20A, 3P	IRRIGATION SYSTEM	2.0
3P SPACE		
3P SPACE		
TOTAL		176.5

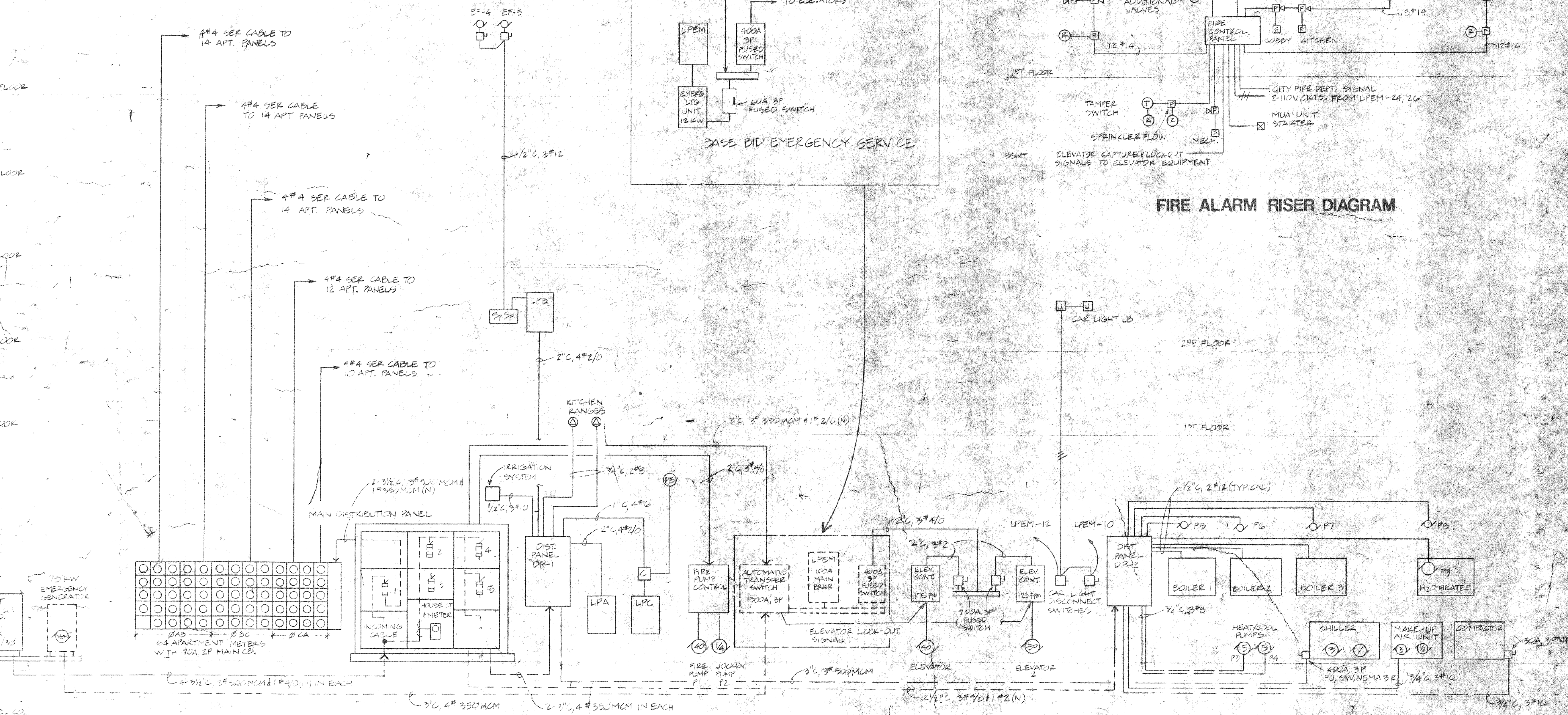
DP-2 200A MAIN LUGS 120/208V, 3Ø, 4W

Panel	main	20A, 1P	20A, 2P	20A, 3P	30A, 2P	30A, 3P	1P spaces
1	20A, 1P	BOILER 1					1.0
2	"	CIRC. PUMP P5					.6
3	"	BOILER 2					1.0
4	"	CIRC. PUMP P6					.6
5	"	BOILER 3					1.0
6	"	CIRC. PUMP P7					.6
7	"	TEMP. CONTROL					.4
8	"	TEMP. CONTROL					.4
9	"	WATER HEATER P7					0.3
10	"	H.W. RETURN PUMP P8					.6
11	"	SPARE					
12	"	SPARE					
13	20A, 3P	SPARE					
14	30A, 3P	COMPACTOR					7.0
15	30A, 3P, SIZE 1	H/C PUMP P3*					6.3
16	30A, 3P, SIZE 1	H/C PUMP P4*					6.3
17	20A, 3P	MAKE-UP AIR UNIT					4.0
18	3P SPACE						
19	3P SPACE						
20	3P SPACE						
TOTAL							30.6

* COMBINATION STARTER WITH "HAND-OFF-AUT." SELECTOR SWITCH AND PILOT LIGHT MOUNTED ON COVER.

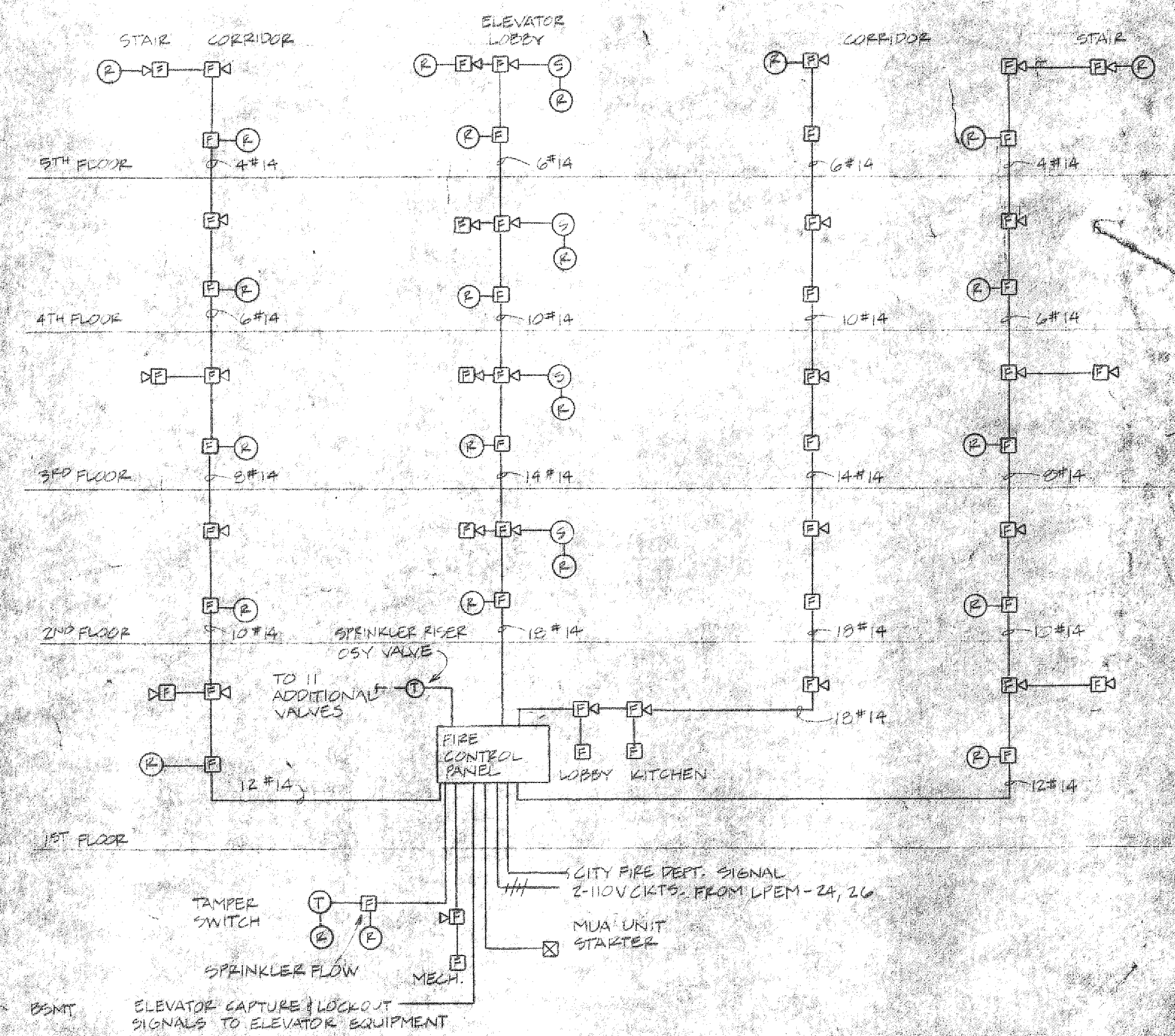
BRANCH PANEL SCHEDULE

panel	main	20A, 1P	20A, 2P	20A, 3P	30A, 2P	30A, 3P	1P spaces
LPA	200A	40					2
LPB	200A	14			3		4
LPC	100A	5		1			4
LPFM	10000	24					6



ELECTRICAL RISER DIAGRAM

(ALTERNATE #1 EMERGENCY SERVICE SHOWN)



FIRE ALARM RISER DIAGRAM