

ADDENDUM No. 1

ITB No. 4753

Miller Avenue Rehabilitation

Bids Due: October 9, 2024 by 3:00 PM (Local Time)

The information contained herein shall take precedence over the original documents and all previous addenda (if any) and is appended thereto. **This Addendum includes (14) pages.**

Bidder is to acknowledge receipt of this Addendum No. 1, including all attachments (if any) in its Bid by so indicating on page ITB-1 of the Invitation to Bid Form. Bids submitted without acknowledgment of receipt of this addendum may be considered nonconforming.

The following forms provided within the ITB document should be included in submitted bids:

- City of Ann Arbor Prevailing Wage Declaration of Compliance
- City of Ann Arbor Living Wage Ordinance Declaration of Compliance
- Vendor Conflict of Interest Disclosure Form
- City of Ann Arbor Non-Discrimination Ordinance Declaration of Compliance

Bids that fail to provide these forms listed above upon bid opening may be rejected as non-responsive and may not be considered for award.

I. CORRECTIONS/ADDITIONS/DELETIONS

Changes to the Bid document which are outlined below are referenced to a page or Section in which they appear conspicuously. The Bidder is to take note in its review of the documents and include these changes as they may affect work or details in other areas not specifically referenced here.

Section/Page(s)

Change

BF-1 to BF-5

As provided in ITB No. 4753 Bid Document:
Bid Form, Section 1 – Schedule of Prices as Page BF-1, BF-2, BF-3, BF-4 and BF-5

As updated herein:
Bid Form, Section 1 – Schedule of Prices as Pages BF-1, BF-2, BF-3, BF-4 and BF-5.

Comment: The intent with this change is to simply replace the inaccurate Pages BF-1 through BF-5 provided in the ITB Document with the accurate Pages BF-1 through BF-5 provided herein.

All mentions

As provided in ITB No. 4753 Plan Set pages 18, 19, 20 and 21:

As updated herein:
Plan Set pages 18, 19, 20 and 21

Comment: The intent with this change is to simply replace the inaccurate Pages 18 through 21

provided in the ITB Document with the accurate Pages 18 through 21 provided herein.

II. QUESTIONS AND ANSWERS

The following Questions have been received by the City. Responses are being provided in accordance with the terms of the ITB. Bidders are directed to take note in their review of the documents of the following questions and City responses as they affect work or details in other areas not specifically referenced here.

Question 1: Can you provide an engineer's estimate for the project?

Answer 1: \$7,000,000

Question 2: Pay Item 02000.02 was deleted. Which trees are going to remain that were originally identified to be removed?

Answer 2: The Pay Item 02000.02 was added to the revised Bid Tab

Question 3: Pay Item 06060.04 was deleted, is this correct?

Answer 3: Yes, this is correct.

Question 4: Pay Item 07030.12 was deleted, is this correct?

Answer 4: The Pay Item 07030.12 was added to the revised Bid Tab

Question 5: Pay Item 07060.05 was deleted, is this correct?

Answer 5: The Pay Item 07060.05 was added to the revised Bid Tab

Question 6: Pay Item 09013.02 was deleted, is this correct?

Answer 6: Yes, this is correct.

Question 7: Per the ARPA Contract Addendum, Page 6, "Buy USA – Domestic Preferences for Certain Procurements Using Federal Funds", there is a *preference* for domestically sourced material. The City of Ann Arbor does not require the use of domestically sourced material. Please clarify if domestic materials will be *required* for this project

Answer 7: Because this project is funded with American Rescue Plan Act (ARPA) State and Local Fiscal Recovery Funds (SLFRF) and no other federal funding, this project is not subject to the Buy America Preference requirements set forth in section 70914 of the Build America, Buy America Act included in the Infrastructure Investment and Jobs Act, Pub. L. 117-58. See, US Treasury SLFRF Final Rule FAQ 6.18. <https://home.treasury.gov/system/files/136/SLFRF-Final-Rule-FAQ.pdf>.

Question 8: Please clarify what the Contractor is responsible to provide to meet the requirements of the ARPA Contract Addendum, Page 7, "Solicitation of Minority and Women-Owned Business Enterprises" during the bidding process and as part of bid submission.

Answer 8: The most up-to-date information on assuring that minority and women-owned businesses are included in the procurement process is located in 2 CFR 200.321, *Contracting with small and minority businesses, women's business enterprises, and labor surplus area firms*. See, US Treasury SLFRF Final Rule FAQ 13.5. <https://home.treasury.gov/system/files/136/SLFRF-Final-Rule-FAQ.pdf>.

Also, before entering into a construction contract, a selected bidder will be required to provide documentation of compliance with this requirement for work to be subcontracted to its major subcontractors identified in Bid Form Section 4. Additionally, Contractor must comply with 2 CFR 200.321 for all subcontracted work and be able to provide documentation showing compliance.

Question 9: Do the ARPA Attachments (1 through 3) need to be submitted with the bid?

Answer 9: No, ARPA Contract Addendum Attachments 1 through 3 are not required to be submitted with a bid, but the selected Contractor will be required to sign and submit them prior to contract execution.

Question 10: Does the pay item 01160.77 include the materials and installation of the Mega Markers, Stand Alone Base Unit, Base Unit and Reflective Arcs as may be required, or will these be paid for separately? Please clarify.

Answer 10: The Pay Item 01160.11 include the materials and installation.

Question 11: Pay Item 06003.71 includes a detailed specification that appears to have been pulled from another project. Please review the requirements of the current DS and correct such items that would apply to this project. In addition, please provide the required backfill requirements and restoration for this installation.

Answer 11: The Detailed Specifications for this pay item provided by the manufacturer. The backfill detail is on Sheet 13

Question 12: Please indicate where the City believes the use of water main insulation will be required. Should this not be included as a separate pay item?

Answer 12: The locations of the water main insulation are shown on the plans. This work is included in corresponding water main items.

Question 13: Road cross sections indicate items that are to be paid for via "Machine Grading, Modified". There is not a Machine Grading pay item included in the bid. Please provide a pay item and DS to cover this work. Please include the specific method of payment AND measurement to cover the work included in this DS.

Answer 13: The Pay Item 03001.00, Machine Grading, is added to the revised Bid Tab.

Question 14: Please indicate on the plans where Aggregate Base Conditioning will apply / provide longitudinal / transverse payment limits

Answer 14: The Aggregate Base Conditioning is indicted on the cross sections

Question 15: Is the excavation as may be required between STA 79+00 and the POE to be incidental to 4" aggregate base, or will it be paid separately? Notes on the typical cross sections are not clear.

Answer 15: This excavation will be paid for as indicated on the revised cross sections.

Question 16: Please confirm that "Turf Establishment" will be paid for as "Turf Restoration". See notes on typical cross sections.

Answer 16: "Turf Establishment" will be paid for as "Turf Restoration"

Question 17: Pay item #06000.05 – 24 in., CI IV RCP Storm Sewer, SD-TD-1 has a quantity of 315 Ft. I did not see this size storm sewer pipe called out to be installed on the plans. Can you clarify where the 24" storm sewer is to be installed at?

Answer 17: The 24 inch is existing storm TO REMAIN and should not be in estimate.

Question 18: Would it be possible to get a digital version of the bid form (in MS Excel format)?

Answer 18: Yes, contact Project Manager, Igor Kotlyar at ikotlyar@a2gov.org.

Bidders are responsible for any conclusions that they may draw from the information contained in the Addendum.

E. Schedule of Pricing/Cost – 20 Points

Company:

Project: Miller Avenue Rehabilitation

File #: 2022-034

ITB #: 4753

ITEM NUMBER	LEGEND	UNIT	ESTIMATED		TOTAL PRICE
			QUANTITY	UNIT PRICE	
General					
01000.00	General Conditions, Max. \$300,000	LS	1	\$	\$
01001.00	Project Supervision, Max. \$150,000	LS	1	\$	\$
01002.00	Project Clean-Up and Restoration	LS	1	\$	\$
01003.00	Digital Audio Visual Coverage	LS	1	\$	\$
01021.00	Erosion Control, Inlet Protection, Fabric Drop	Ea	94	\$	\$
01030.00	Tree Protection Fence	Ft	1814	\$	\$
01040.00	Minor Traffic Control, Max. \$75,000	LS	1	\$	\$
01041.00	Traffic Regulator Control	LS	1	\$	\$
01050.00	Sign, Type B, Temp, Prismatic, Furn & Oper	Sft	1478	\$	\$
01051.00	Sign, Type B, Temp, Prismatic, Special, Furn & Oper	Sft	473	\$	\$
01052.00	Temporary "No Parking" Sign	Ea	43	\$	\$
01060.00	Lighted Arrow, Type A, Furn & Oper	Ea	1	\$	\$
01070.00	Sign, Portable, Changeable Message, Furn & Oper	Ea	8	\$	\$
01080.00	Plastic Drum, High Intensity, Lighted, Furn & Oper	Ea	459	\$	\$
01081.00	Channelizer Cone, High Intensity, 42 In., Furn & Oper	Ea	25	\$	\$
01092.00	Barricade, Type III, High Intensity, Double Sided, Lighted, Furn & Oper	Ea	75	\$	\$
01100.00	Pedestrian Type II Barricade, Temp, Furn & Oper	Ea	231	\$	\$
01102.00	Temporary Pedestrian Ramp, Furn & Oper	Ea	11	\$	\$
01103.00	Temporary Pedestrian Mat, Furn & Oper	Ft	55	\$	\$
01110.00	Pavt Mrkg, Longit, Remove	Ft	24749	\$	\$
01112.00	Pavt Mrkg Cover, Type R, Black	Ft	1017	\$	\$
01127.00	Pavt Mrkg, Wet Reflective, Type R, Tape, 6 In., White, Temp	Ft	13723	\$	\$
01128.00	Pavt Mrkg, Wet Reflective, Type R, Tape, 6 In., Yellow, Temp	Ft	5183	\$	\$
01146.00	Pavt Mrkg, Wet Reflective, Type R, Tape, Thru and Lt Turn Arrow Sym	Ea	1	\$	\$
01160.71	DS_Sign, Type III, Erect, Salv	Ea	3	\$	\$
01160.72	DS_Band, Sign	Ea	5	\$	\$
01160.73	DS_Sign, Type IIIA	Sft	343	\$	\$
01160.74	DS_Sign, Type IIIB	Sft	12	\$	\$
01160.75	DS_Perforated Steel Square Breakaway System	Ea	74	\$	\$
01160.76	DS_Mast Arm Cable Mount	Ea	2	\$	\$
01160.77	DS_In-Street Sign	Ea	25	\$	\$
Removals					
02000.02	Tree, Rem, 13 In. - 19 In.	Ea	2	\$	\$
02000.03	Tree, Rem, 20 In. - 29 In.	Ea	3	\$	\$
02020.00	HMA, Any Thickness, Rem	Syd	6175	\$	\$
02021.00	HMA Surface, Rem	Syd	1511	\$	\$
02023.00	Cold-Milling HMA Surface	Syd	15997	\$	\$
02025.00	Concrete Pavt, Any Thickness, Rem	Syd	180	\$	\$
02030.00	Curb, Gutter, and Curb and Gutter, Any Type, Rem	Ft	2142	\$	\$
02040.00	Sidewalk, Sidewalk Ramp, and Driveway Approach, Any Thickness, Rem	Sft	8575	\$	\$
02050.71	DS_Sign, Type III, Rem	Ea	174	\$	\$
02050.00	Sign, Rem, Salv	Ea	2	\$	\$
Earthwork					
03001.00	Machine Grading, _____	Syd	13797	\$	\$
03021.00	Subgrade Undercutting, Type II	Cyd	200	\$	\$
03030.01	Exploratory Excavation, SD-TD-1, (0-10' Deep)	Ea	2	\$	\$
03030.03	Exploratory Excavation, SD-TD-2, (0-10' Deep)	Ea	2	\$	\$
03040.00	Earth Excavation	Cyd	81	\$	\$
03050.00	Embankment	Cyd	50	\$	\$
Sanitary Sewer					
04014.01	6 In., SDR 26 PVC Sanitary Service Lead, SD-TD-2	Ft	100	\$	\$
04060.00	Sanitary Structure Cover	Ea	23	\$	\$
04061.00	Sanitary Structure Cover, Adjust	Ea	23	\$	\$
TOTAL THIS PAGE (BF-1)					\$

E. Schedule of Pricing/Cost – 20 Points

Company:

Project: Miller Avenue Rehabilitation

File #: 2022-034

ITB #: 4753

ITEM NUMBER	LEGEND	UNIT	ESTIMATED QUANTITY	UNIT PRICE	TOTAL PRICE
Storm and Drainage					
06000.01	12 In., CL IV RCP Storm Sewer, SD-TD-1	Ft	813	\$	\$
06000.03	18 In., CL IV RCP Storm Sewer, SD-TD-1	Ft	42	\$	\$
06000.05	24 In., CL IV RCP Storm Sewer, SD-TD-1	Ft	315	\$	\$
06000.09	48 In., CL IV RCP Storm Sewer, SD-TD-1	Ft	380	\$	\$
06003.04	12 In., PE Storm Sewer, SD-TD-2	Ft	78	\$	\$
06003.06	18 In., PE Storm Sewer, SD-TD-2	Ft	78	\$	\$
06003.71	DS_Chambermaxx System	LS	1	\$	\$
06030.04	Storm Sewer Tap, 12 In. Dia.	Each	15	\$	\$
06050.01	DS_Storm Manhole, 48 In. Dia. (0-8' deep)	Ea	2	\$	\$
06050.02	Storm Manhole, 48 In. Dia. , Additional Depth	Ft	0.77	\$	\$
06050.05	DS_Storm Manhole, 72 In. Dia. (0-8' deep)	Ea	2	\$	\$
06050.06	Storm Manhole, 72 In. Dia. , Additional Depth	Ft	7.68	\$	\$
06060.01	DS_Storm Inlet-Junction, 36 In. Dia., (0-8' deep)	Ea	1	\$	\$
06060.03	DS_Storm Inlet-Junction, 48 In. Dia., (0-8' deep)	Ea	2	\$	\$
06070.01	DS_Storm Single Inlet, 24 In. Dia., (0-8' deep)	Ea	22	\$	\$
06070.02	Storm Single Inlet, 24 In. Dia., Additional Depth	Ft	0.55	\$	\$
06080.01	DS_Storm High Capacity Inlet, 48 In. Dia., (0-8' deep)	Ea	1	\$	\$
06090.01	DS_Storm Manhole with Weir, 72 In. Dia. (0-8' deep)	Ea	2	\$	\$
06090.02	Storm Manhole with Weir, 72 In. Dia., Additional Depth	Ft	2.34	\$	\$
06100.01	DS_Storm Manhole Over Existing ("Doghouse"), 48 In. Dia.	Ea	1	\$	\$
06100.02	DS_Storm Manhole Over Existing ("Doghouse"), 60 In. Dia.	Ea	1	\$	\$
06110.03	Storm Sewer Pipe, 12 In. Dia., Abandon	Ft	736	\$	\$
06120.03	Storm Sewer Pipe, 12 In. Dia., Rem	Ft	260	\$	\$
06130.00	Storm Sewer Structure, Abandon	Ea	1	\$	\$
06140.00	Storm Sewer Structure, Rem	Ea	6	\$	\$
06150.00	Storm Sewer Drop Structure, Rem	Ea	15	\$	\$
06160.01	Storm Structure Cover	Ea	48	\$	\$
06160.02	Storm Structure Cover, Adjust	Ea	48	\$	\$
06160.03	Storm Structure Adjust, Additional Depth	Ft	5	\$	\$
06180.02	Underdrain, Subgrade, 6 In.	Ft	815	\$	\$
Water Mains					
07000.02	6 In., PC 350 DIP w/polywrap, SD-TD-1	Ft	94	\$	\$
07000.03	8 In., PC 350 DIP w/polywrap, SD-TD-1	Ft	692	\$	\$
07000.05	12 In., PC 350 DIP w/polywrap, SD-TD-1	Ft	2912	\$	\$
07001.01	16 In., PC 250 DIP w/polywrap, SD-TD-1	Ft	33	\$	\$
07011.01	8 In. 90° DIP Bend	Ea	3	\$	\$
07011.02	8 In. 45° DIP Bend	Ea	44	\$	\$
07011.03	8 In. 22.5° DIP Bend	Ea	5	\$	\$
07011.04	8 In. 11.25° DIP Bend	Ea	1	\$	\$
07013.02	12 In. 45° DIP Bend	Ea	15	\$	\$
07013.03	12 In. 22.5° DIP Bend	Ea	2	\$	\$
07013.04	12 In. 11.25° DIP Bend	Ea	4	\$	\$
07014.02	16 In. 45° DIP Bend	Ea	2	\$	\$
07020.03	8 In. X 6 In. DIP Reducer	Ea	8	\$	\$
07020.14	16 In. X 12 In. DIP Reducer	Ea	1	\$	\$
07030.12	12 In. X 12 In. X 6 In. DIP Tee	Ea	1	\$	\$
07030.13	12 In. X 12 In. X 8 In. DIP Tee	Ea	18	\$	\$
07030.18	16 In. X 16 In. X 12 In. DIP Tee	Ea	1	\$	\$
07050.01	DS_Gate Valve in Box, 6 In.	Ea	8	\$	\$
07050.02	DS_Gate Valve in Box, 8 In.	Ea	4	\$	\$
07050.04	DS_Gate Valve in Box, 12 In.	Ea	6	\$	\$
07050.05	DS_Gate Valve in Box, 16 In.	Ea	2	\$	\$
07060.02	DS_Gate Valve in Well, 8 In.	Ea	5	\$	\$
07060.04	DS_Gate Valve in Well, 12 In.	Ea	3	\$	\$
TOTAL THIS PAGE (BF-2)					\$

E. Schedule of Pricing/Cost – 20 Points

Company:

Project: Miller Avenue Rehabilitation

File #: 2022-034

ITB #: 4753

ITEM NUMBER	LEGEND	UNIT	ESTIMATED		TOTAL PRICE
			QUANTITY	UNIT PRICE	
Water Mains (continued)					
07060.05	DS_Gate Valve in Well, 16 In.	Ea	1	\$	\$
07071.04	DS_Tapping Sleeve & Valve in Well, 12 In.	Ea	1	\$	\$
07080.00	Excavate & Backfill For Water Service Tap and Lead	Ft	822	\$	\$
07090.00	Water Structure Cover	Ea	3	\$	\$
07091.00	Water Structure Cover, Adjust	Ea	3	\$	\$
07100.00	Fire Hydrant Assembly, Complete	Ea	8	\$	\$
07102.00	Fire Hydrant Assembly, Rem	Ea	6	\$	\$
07110.01	Sacrificial Anode, 17-pound	Ea	19	\$	\$
07110.02	Sacrificial Anode, 32-pound	Ea	4	\$	\$
07120.00	Gate Box, Adjust	Ea	3	\$	\$
07121.00	Curb Box, Adjust	Ea	3	\$	\$
07130.01	Temporary Water Main Line Stop, 8 In. or less	Ea	11	\$	\$
07130.03	Temporary Water Main Line Stop, 12 In.	Ea	1	\$	\$
07130.04	Temporary Water Main Line Stop, 16 In.	Ea	4	\$	\$
07131.00	Temporary Water Main Line Stop, Additional Rental Day	Ea	5	\$	\$
07140.02	Water Main Pipe, 6 In. Dia., Abandon	Ft	2636	\$	\$
07140.03	Water Main Pipe, 8 In. Dia., Abandon	Ft	415	\$	\$
07140.05	Water Main Pipe, 12 In. Dia., Abandon	Ft	14	\$	\$
07140.07	Water Main Pipe, 16 In. Dia., Abandon	Ft	8	\$	\$
07160.02	Gate Valve in Box, 6 In. Dia., Abandon	Ea	8	\$	\$
07160.03	Gate Valve in Box, 8 In. Dia., Abandon	Ea	2	\$	\$
07160.05	Gate Valve in Box, 12 In. Dia., Abandon	Ea	1	\$	\$
07180.02	Gate Valve in Well, 6 In. Dia., Abandon	Ea	5	\$	\$
07180.03	Gate Valve in Well, 8 In. Dia., Abandon	Ea	2	\$	\$
07180.06	Gate Valve in Well, 16 In. Dia., Abandon	Ea	1	\$	\$
Streets, Driveways, & Sidewalks					
08000.00	Subbase, CIP	Cyd	407	\$	\$
08010.00	Aggregate Base Course, 21AA, CIP	Cyd	1779	\$	\$
08010.01	Aggregate Base, 4 In., 21AA, CIP	Syd	252	\$	\$
08010.02	Aggregate Base, 6 In., 21AA, CIP	Syd	1063	\$	\$
08010.03	Aggregate Base, 8 In., 21AA, CIP	Syd	133	\$	\$
08010.71	DS_Aggregate Base Conditioning	Syd	1596	\$	\$
08060.00	Hand Patching	Ton	110	\$	\$
08070.15	HMA, 4EML	Ton	2273	\$	\$
08070.19	HMA, 5EML	Ton	1818	\$	\$
08080.02	Conc Pavt, Non-Reinf, 7 In.	Syd	9	\$	\$
08080.03	Conc Pavt, Non-Reinf, 8 In.	Syd	1081	\$	\$
08080.04	Conc Pavt, Non-Reinf, 9 In.	Syd	371	\$	\$
08110.00	Conc, Curb or Curb & Gutter, All Types	Ft	2980	\$	\$
08110.71	DS_Conc, Curb or Curb & Gutter, Monolithic	Ft	211	\$	\$
08120.01	Conc, Driveway Opening, Type M	Ft	174	\$	\$
08130.01	Conc, Sidewalk, 4 In.	Sft	4720	\$	\$
08131.01	Conc, Sidewalk, Drive Approach, or Ramp, 6 In.	Sft	2396	\$	\$
08150.00	Detectable Warning Surface	Ft	320	\$	\$
08150.71	DS_Detectable Directional Tiles	Ea	16	\$	\$
08190.01	Pavt Mrkg, Polymer Cement Surface, Bike, Large Sym	Ea	1	\$	\$
08190.02	Pavt Mrkg, Polymer Cement Surface, Bike, Small Sym	Ea	36	\$	\$
08190.03	Pavt Mrkg, Polymer Cement Surface, Bike Thru Arrow Sym	Ea	29	\$	\$
08190.04	Pavt Mrkg, Polymer Cement Surface, Bike Lt Turn Arrow Sym	Ea	1	\$	\$
08190.05	Pavt Mrkg, Polymer Cement Surface, Bike Rt Turn Arrow Sym	Ea	2	\$	\$
08190.06	Pavt Mrkg, Polymer Cement Surface, Bike Lane Green	Sft	10616	\$	\$
08190.07	Pavt Mrkg, Polymer Cement Surface, Tan	Sft	820	\$	\$
08200.05	Pavt Mrkg, Polyurea, 12 In., Cross Hatching, White	Ft	162	\$	\$
08200.06	Pavt Mrkg, Polyurea, 12 In., Cross Hatching, Yellow	Ft	69	\$	\$
TOTAL THIS PAGE (BF-3)					\$

E. Schedule of Pricing/Cost – 20 Points

Company:

Project: Miller Avenue Rehabilitation

File #: 2022-034

ITB #: 4753

ITEM NUMBER	LEGEND	UNIT	ESTIMATED		TOTAL PRICE
			QUANTITY	UNIT PRICE	
Streets, Driveways, & Sidewalks (continued)					
08200.07	Pavt Mrkg, Polyurea, 12 In., Crosswalk	Ft	3438	\$	\$
08200.09	Pavt Mrkg, Polyurea, 24 In., Stop Bar	Ft	439	\$	\$
08200.12	Pavt Mrkg, Polyurea, 4 In., Yellow	Ft	4770	\$	\$
08200.13	Pavt Mrkg, Polyurea, 6 In., White	Ft	11161	\$	\$
08200.14	Pavt Mrkg, Polyurea, 6 In., Yellow	Ft	15522	\$	\$
08200.15	Pavt Mrkg, Polyurea, Lt Turn Arrow Sym	Ea	3	\$	\$
08200.17	Pavt Mrkg, Polyurea, Rt Turn Arrow Sym	Ea	2	\$	\$
08200.18	Pavt Mrkg, Polyurea, Thru Arrow Sym	Ea	1	\$	\$
08200.30	Pavt Mrkg, Polyurea, Yield Triangle Sym	Ea	36	\$	\$
08200.31	Pavt Mrkg, Polyurea, Speed Hump Chevron, White	Ea	36	\$	\$
08200.71	DS_Continuous Base Mid Span L60	Ea	1079	\$	\$
08200.72	DS_Continuous Base Front Span L61	Ea	64	\$	\$
08200.73	DS_Continuous Base Rear Span L62	Ea	64	\$	\$
08200.74	DS_Big Bollard MASH L125SHM	Ea	901	\$	\$
08200.75	DS_Bikeway Delineator Post Black	Ea	89	\$	\$
08200.76	DS_Bikeway Delineator Post Yellow	Ea	20	\$	\$
08251.00	Recessing Pavt Mrkg, Longit	Ft	25247	\$	\$
08252.00	Recessing Pavt Mrkg, Transv	Sft	4392	\$	\$
08263.00	Rem Curing Compound, for Spec Mrkg	Sft	1504	\$	\$
08264.00	Rem Spec Mrkg	Sft	4910	\$	\$
08300.00	Monument Box, Adjust	Ea	12	\$	\$
Lighting and Electrical					
09020.00	Handhole, Rem	Ea	2	\$	\$
09030.01	Handhole Assembly, 17 In. X 30 In. x 18 In.	Ea	6	\$	\$
09122.00	Light Fixture, Rem and Salvage	Ea	1	\$	\$
09123.00	Light Fixture, Reinstall	Ea	1	\$	\$
09200.71	DS_Post, Steel, 3 lb	Ft	17	\$	\$
09200.72	DS_Ground Mtd Sign Support, Rem	Ea	2	\$	\$
09210.71	DS_Conduit, Directional Bore, 2, 3 inch	Ft	150	\$	\$
09210.72	DS_Conduit, DB, 1, 1 1/2 inch	Ft	140	\$	\$
09210.73	DS_Conduit, DB, 1, 3 inch	Ft	10	\$	\$
09210.74	DS_Conduit, DB, 2, 3 inch	Ft	75	\$	\$
09210.75	DS_Conduit, DB, 4, 3 inch	Ft	10	\$	\$
09211.71	DS_Cable Pole, TS and Sec, Disman	Ea	1	\$	\$
09211.72	DS_Cable, Sec, 600V, 1, 3/C#6	Ft	100	\$	\$
09211.73	DS_Wood Pole, Rem	Ea	1	\$	\$
09211.74	DS_Serv Disconnect	Ea	1	\$	\$
09211.75	DS_Serv Disconnect, Rem	Ea	1	\$	\$
09211.76	DS_Wood Pole, Fit Up, TS and Sec Cable Pole	Ea	1	\$	\$
09220.71	DS_Light Std Arm, Install Salv	Ea	1	\$	\$
09220.72	DS_Light Std Arm, Rem and Salv	Ea	1	\$	\$
09230.71	DS_Controller and Cabinet, Rem	Ea	1	\$	\$
09230.72	DS_Controller Fdn, Base Mount	Ea	1	\$	\$
09230.73	DS_Controller Fdn, Rem	Ea	1	\$	\$
09231.71	DS_Pedestal, Alum	Ea	1	\$	\$
09231.72	DS_Pedestal, Fdn	Ea	21	\$	\$
09231.73	DS_Pedestal Fdn, Rem	Ea	3	\$	\$
09231.74	DS_Pedestal, Rem	Ea	4	\$	\$
09231.75	DS_Pushbutton, Pedestal, Alum	Ea	1	\$	\$
09231.76	DS_Pushbutton, Rem	Ea	1	\$	\$
09231.77	DS_Pushbutton and Sign, Salv	Ea	1	\$	\$
09231.78	DS_Push Button Station and Sign	Ea	6	\$	\$
09232.71	DS_Span Wire, Rem	Ea	1	\$	\$
09232.72	DS_TS, Pedestrian, Bracket Arm Mtd, Rem	Ea	1	\$	\$
TOTAL THIS PAGE (BF-4)					\$

E. Schedule of Pricing/Cost – 20 Points

Company:

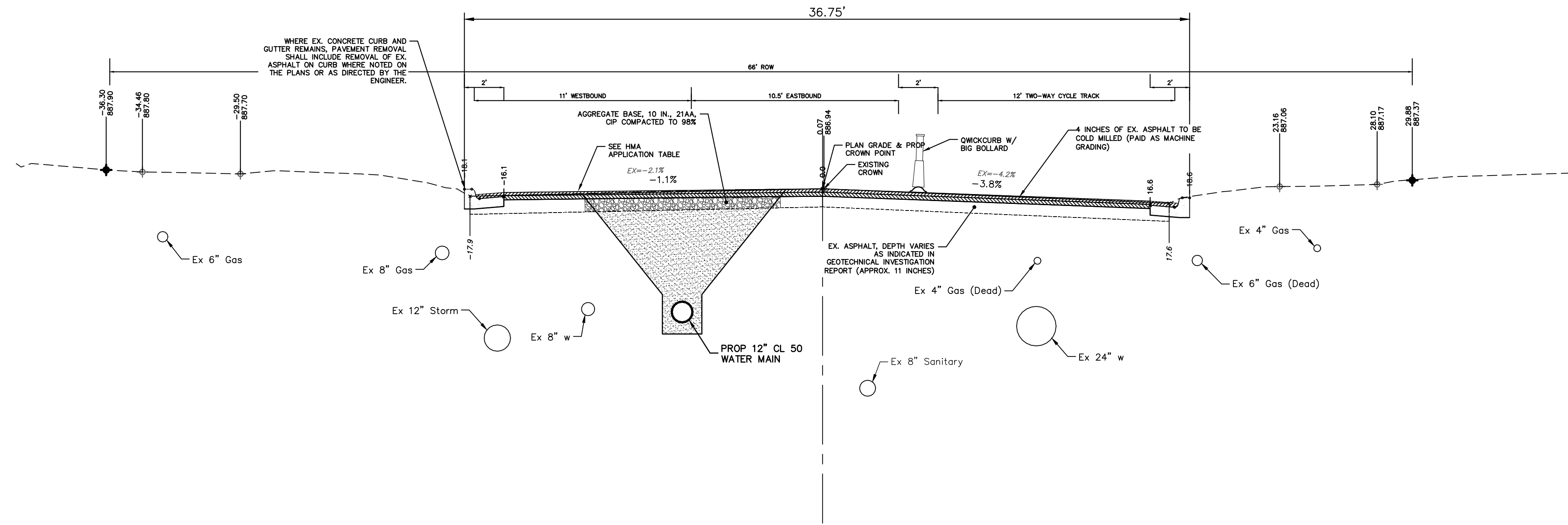
Project: Miller Avenue Rehabilitation

File #: 2022-034

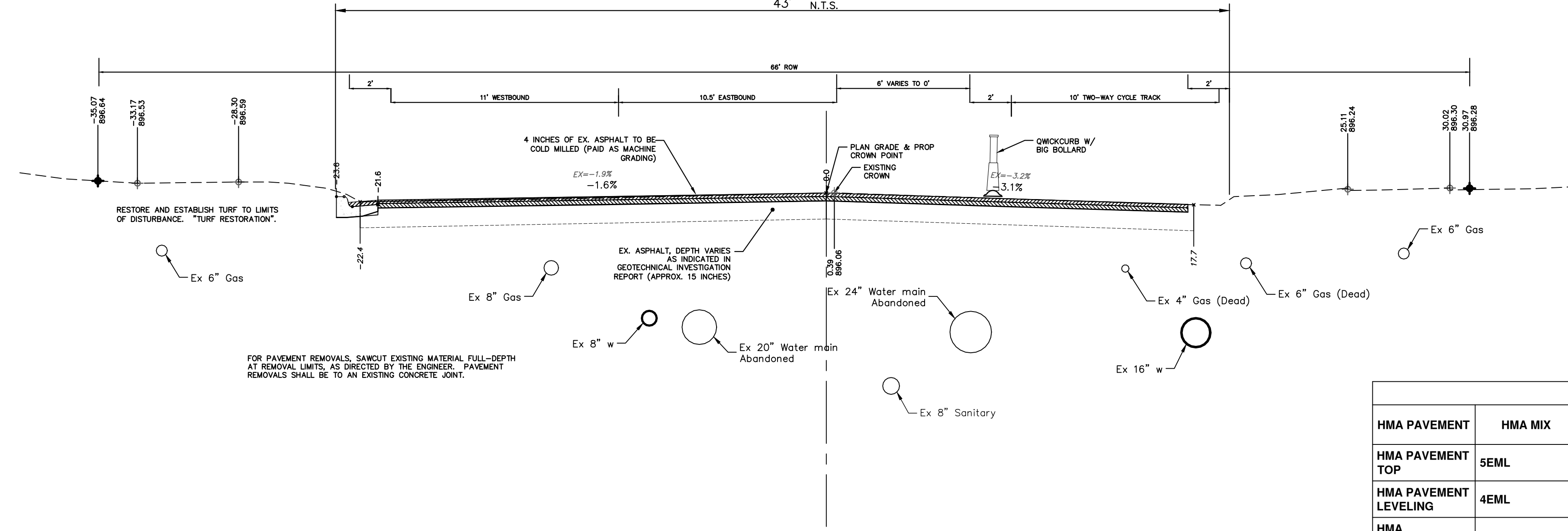
ITB #: 4753

ITEM NUMBER	LEGEND	UNIT	ESTIMATED QUANTITY	UNIT PRICE	TOTAL PRICE
Lighting and Electrical (continued)					
09232.73	DS_TS, Pedestrian, Pedestal Mtd, Rem	Ea	4	\$	\$
09232.74	DS_TS, Span Wire Mtd, Rem	Ea	2	\$	\$
09232.75	DS_TS, Pedestrian, One Way Pedestal Mtd, Salv	Ea	1	\$	\$
09232.76	DS_Pedestrian Signal System, Accessible	Ea	1	\$	\$
09232.77	DS_TS, Pedestrian, One Way Pedestal Mtd (LED) Countdown	Ea	4	\$	\$
09232.78	DS_TS, Pedestrian, Two Way Pedestal Mtd (LED) Countdown	Ea	1	\$	\$
09233.71	DS_Bracket, Truss, With 12 Foot Arm	Ea	2	\$	\$
09233.72	DS_Wireless Vehicle Sensor Node, Rem	Ea	15	\$	\$
09233.73	DS_Hemispherical Video Detection Camera	Ea	1	\$	\$
09233.74	DS_Hemispherical Video Detection System	Ea	1	\$	\$
09234.71	DS_Casing	Ft	7	\$	\$
09234.72	DS_Backplate, TS	Ea	7	\$	\$
09235.71	DS_Mast Arm Pole, Cat III	Ea	1	\$	\$
09235.72	DS_Mast Arm, 25 foot, Cat III	Ea	1	\$	\$
09235.73	DS_Mast Arm, 40 foot, Cat III	Ea	1	\$	\$
09235.74	DS_Mast Arm Pole Fdn, Modified	Ft	10	\$	\$
09235.75	DS_TS, One Way Bracket Arm Mtd (LED), Long Life	Ea	1	\$	\$
09235.76	DS_TS, One Way Mast Arm Mtd (LED), Long Life	Ea	6	\$	\$
09235.77	DS_TS, One Way Mast Arm Mtd, FYA (LED), Long Life	Ea	1	\$	\$
09235.78	DS_TS, One Way Pedestal Mtd (LED), Long Life	Ea	3	\$	\$
09236.71	DS_Controller, NEMA, ATC Type, Modified	Ea	1	\$	\$
09236.72	DS_Cabinet, NEMA Type, Modified	Ea	1	\$	\$
09240.71	DS_St Name Sign, Two Way, LED, 6 foot	Ea	1	\$	\$
09240.72	DS_St Name Sign, Two Way, LED, 8 foot	Ea	1	\$	\$
09240.73	DS_Roadside Unit, Rem and Salv	Ea	1	\$	\$
09240.74	DS_Roadside Unit, Install Salv	Ea	1	\$	\$
Landscaping					
10000.02	Tree, Large, B&B	Ea	10	\$	\$
10060.00	Turf Restoration	Syd	2595	\$	\$
TOTAL THIS PAGE (BF-5)				\$	
TOTAL FROM PAGE BF-1:				\$	
TOTAL FROM PAGE BF-2:				\$	
TOTAL FROM PAGE BF-3:				\$	
TOTAL FROM PAGE BF-4:				\$	
TOTAL BASE BID:				\$	

R:\2022034_Miller_Ave_Rehab_Source Drawings\Align-Corridor\2022034_Xsectn.dwg Dwg Created: 25-Sep-24 - _a2 standard bw.stb - Plot Date: 27-Sep-24



**MILLER AVENUE
TYPICAL SECTION**
STA. 50+75 TO 58+50
43' N.T.S.



**MILLER AVENUE
TYPICAL SECTION**
P.O.B. TO STA. 50+75
N.T.S.

HMA APPLICATION ESTIMATE						
HMA PAVEMENT	HMA MIX	RATE OF APPLICATION	THICKNESS (INCHES)	AWI (MIN.)	BINDER	LOCATION/NOTES
HMA PAVEMENT TOP	5EML	220 LB/SYD	2.0	220 (TOP)	PG 64-28	TOP COURSE
HMA PAVEMENT LEVELING	4EML	275 LB/SYD	2.5	-	PG 64-28	LEVELING COURSE
HMA APPROACH TOP	4EML	220 LB/SYD	2	220 (TOP)	PG 64-28	TOP COURSE
HMA APPROACH LEVELING	4EML	220 LB/SYD	2	-	PG 64-28	LEVELING COURSE
HAND PATCHING	4EML	0 - 440 LB/SYD			PG 64-28	HAND PATCHING
ASPHALT EMULSION	SS-1h	0.05 - 0.15 GAL/SYD	-	-	-	INCLUDE IN COST OF HMA ITEM

CITY OF ANN ARBOR - PUBLIC SERVICES - ENGINEERING

MILLER AVENUE REHABILITATION

MILLER SECTIONS 1

SCALE PLAN: 1" = 4'
PROFILE: 1" = 4'

DRAWING No. 2022034-1B

SHEET No. 18 OF 132

811
Know what's below.
Call Before you dig.

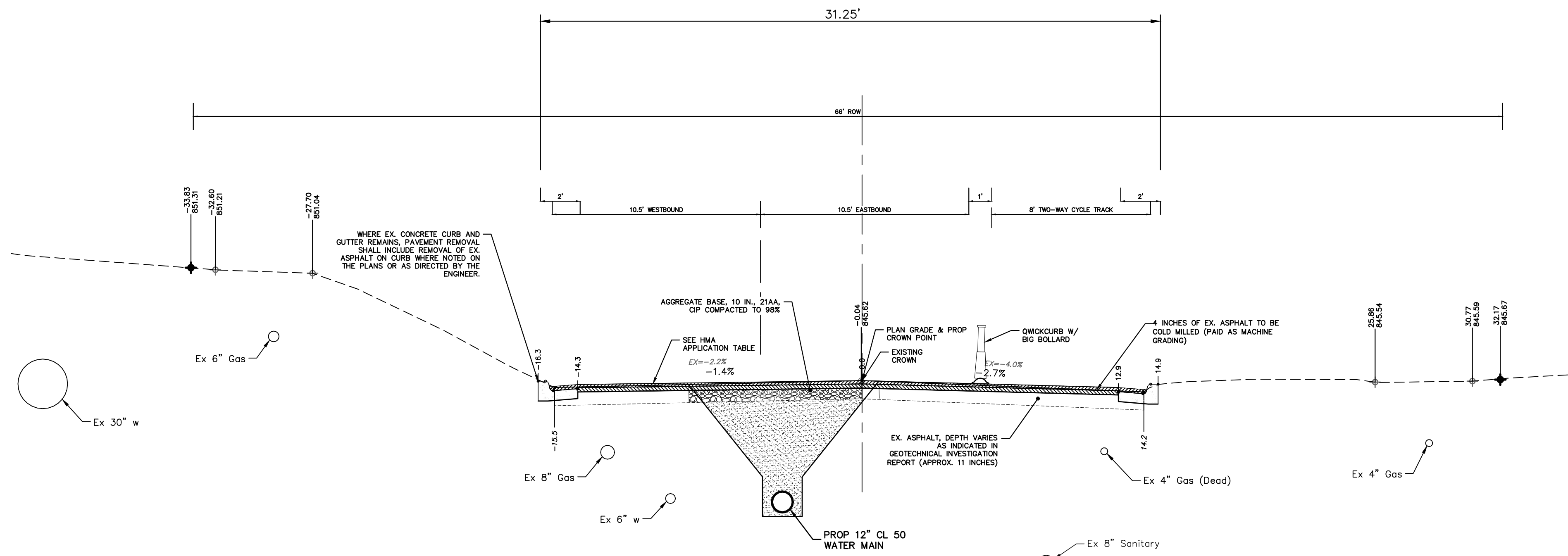
ANN ARBOR MICHIGAN

CITY OF ANN ARBOR
PUBLIC SERVICES
301 EAST HURON STREET
ANN ARBOR, MI 48106-8647
ANN ARBOR 734-794-6410
www.a2gov.org

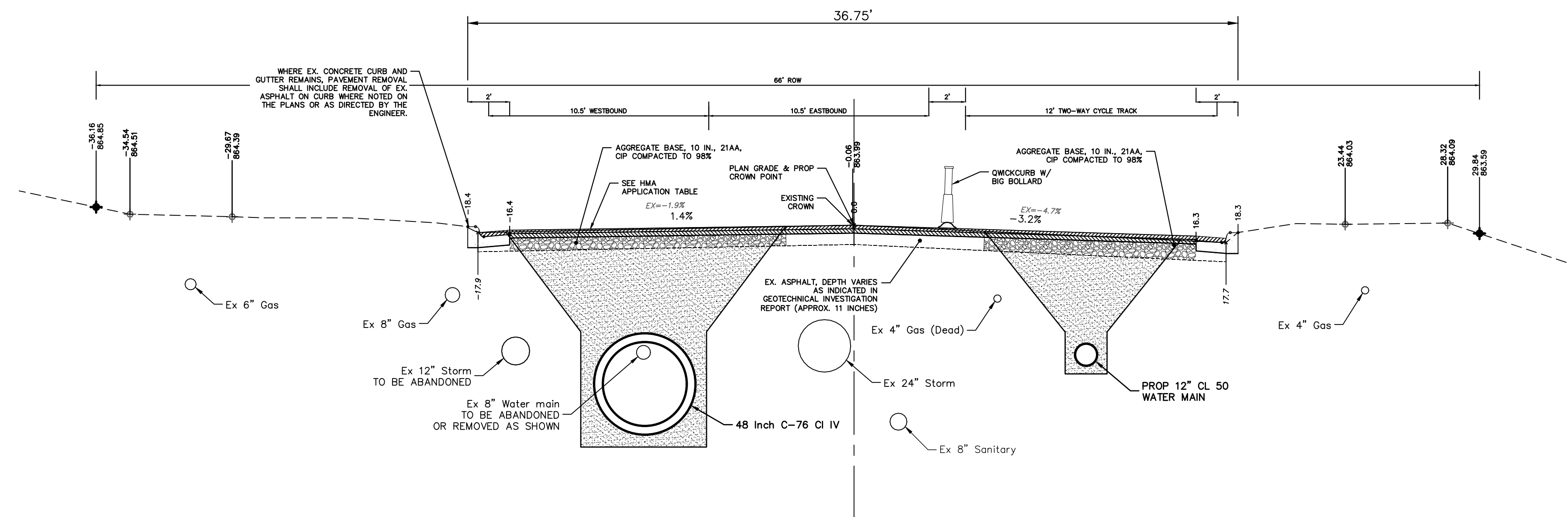
DATE: 09/26/2024
DRAWN: AZD
CHECKED: IVK

ADDENDUM #1
DESCRIPTION
REV.

R:\2022034_Miller_Ave_Rehab_Source Drawings\Align-Corridor\2022034_Xsectn.dwg Dwg Created: 25-Sep-24 - _a2_standard bw.stb - Plot Date: 27-Sep-24



**MILLER AVENUE
TYPICAL SECTION**
STA. 63+85 TO 68+75
N.T.S.



**MILLER AVENUE
TYPICAL SECTION**
STA. 58+50 TO STA. 63+85
N.T.S.



REV.	DESCRIPTION	DATE	DRAWN	CHECKED
00	ADDENDUM #1	05/26/2024	AZD	IWK

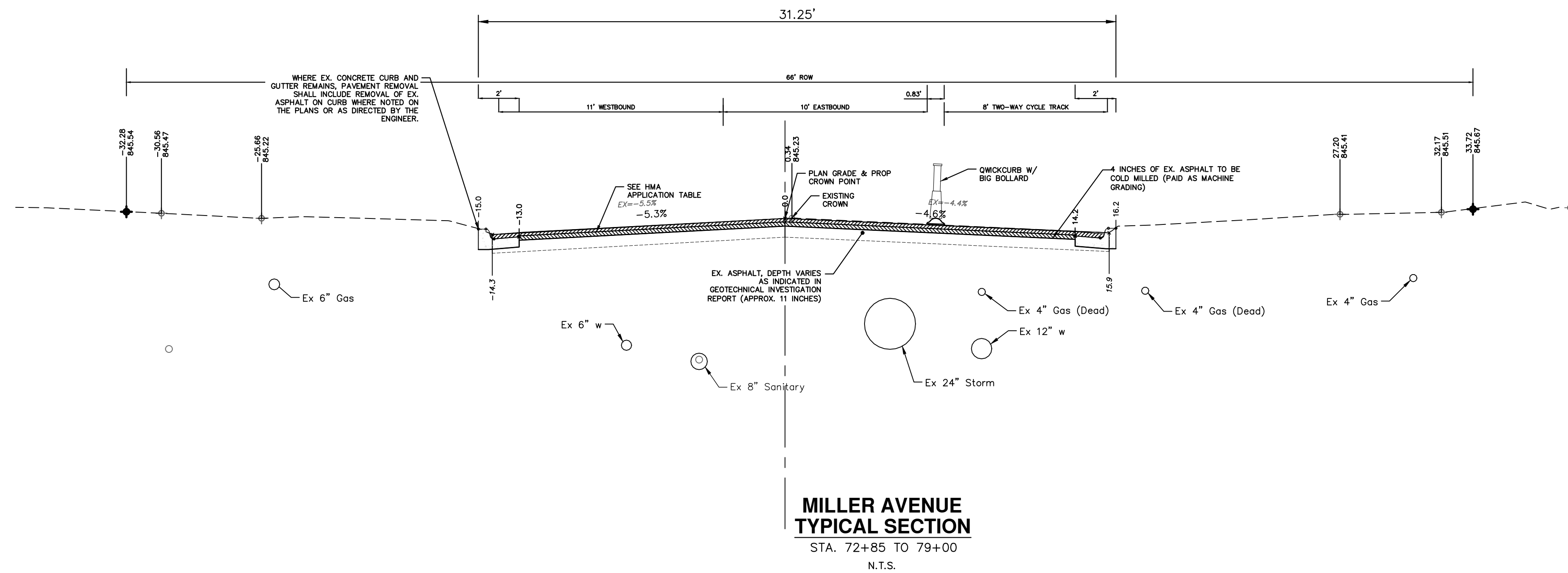
CITY OF ANN ARBOR
PUBLIC SERVICES
301 EAST HURON STREET
ANN ARBOR, MI 48106-1667
www.a2gov.org



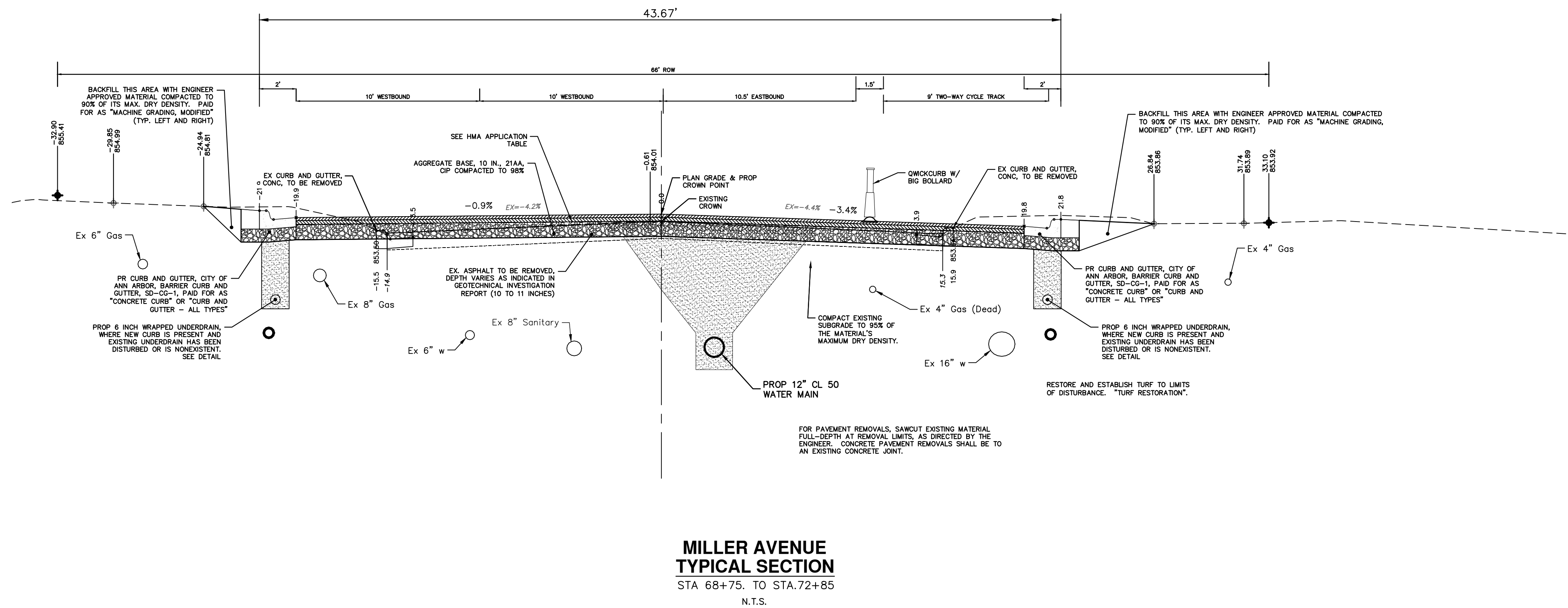
CITY OF ANN ARBOR - PUBLIC SERVICES - ENGINEERING
MILLER AVENUE REHABILITATION
MILLER SECTIONS 2

SCALE PLAN: 1" = 4'
PROFILE: 1" = 4'
DRAWING No. 2022034-19

R:\2022034_Miller_Ave_Rehab_Source Drawings\Align-Corridor\2022034_Xsectn.dwg Dwg Created: 25-Sep-24 - _a2_standard bw.stb - Plot Date: 27-Sep-24



**MILLER AVENUE
TYPICAL SECTION**
STA. 72+85 TO 79+00
N.T.S.

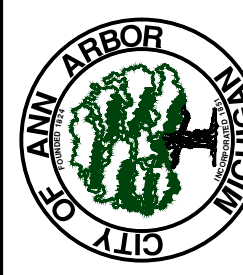


**MILLER AVENUE
TYPICAL SECTION**
STA 68+75. TO STA.72+85
N.T.S.



REV.	DESCRIPTION	DATE	DRAWN	CHECKED
00	ADDENDUM #1	05/26/2024	AZD	IWK

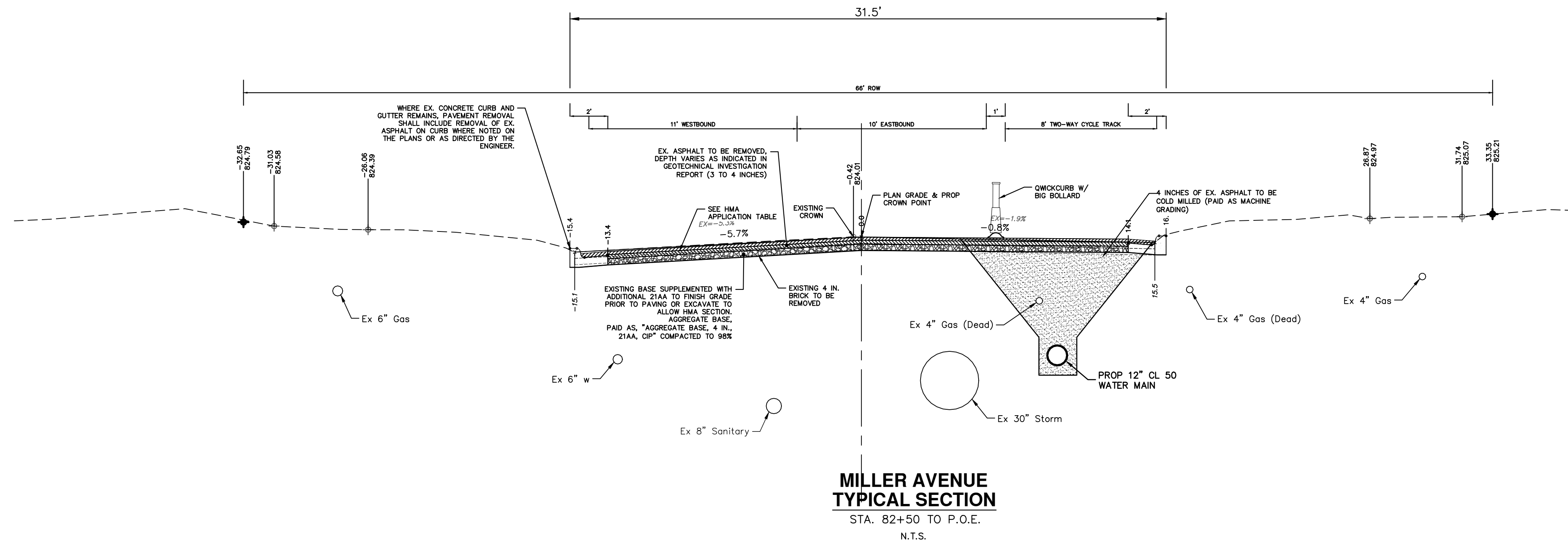
CITY OF ANN ARBOR
PUBLIC SERVICES
301 EAST HURON STREET
ANN ARBOR, MI 48107-8647
www.a2gov.org



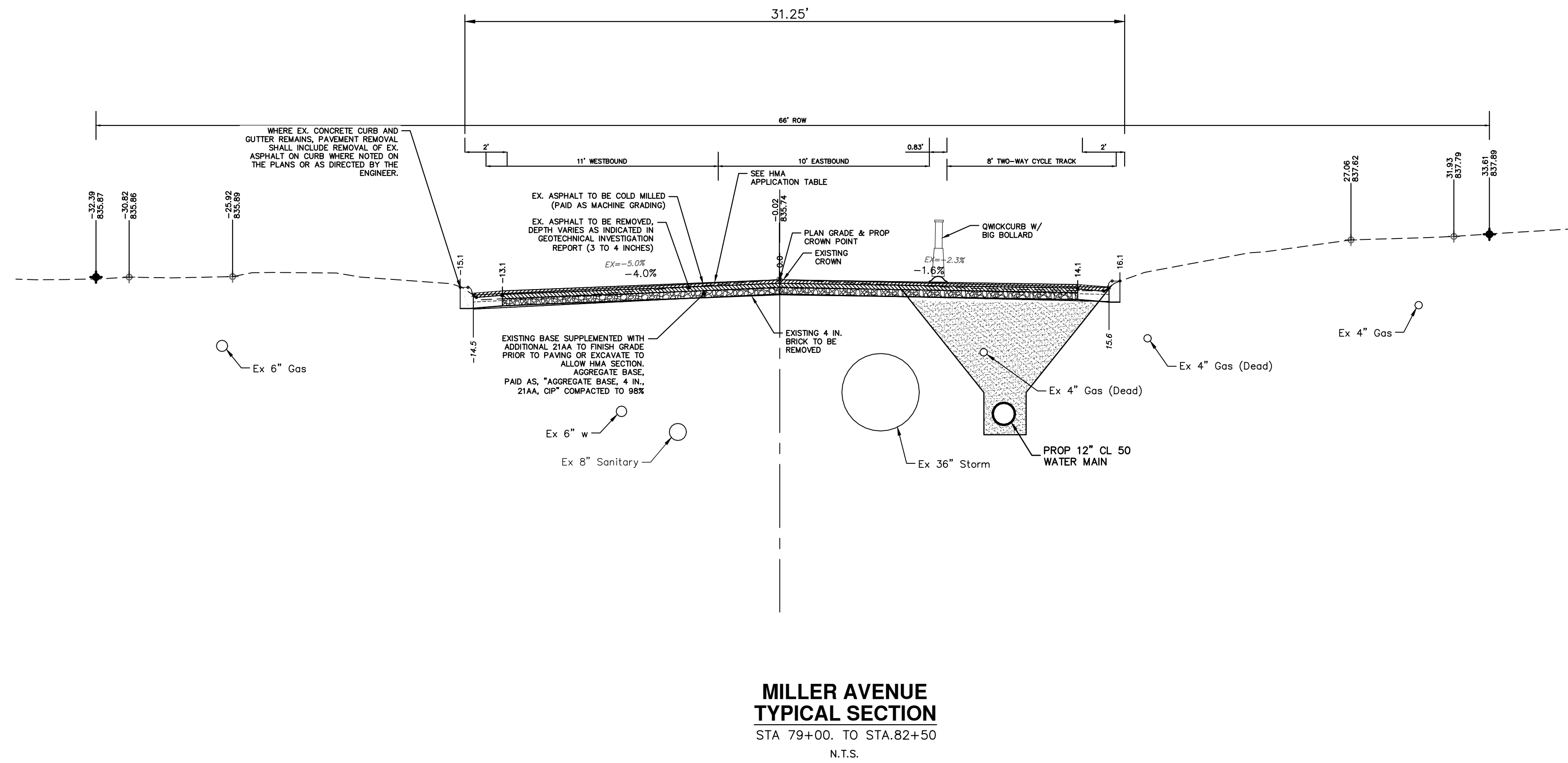
CITY OF ANN ARBOR - PUBLIC SERVICES - ENGINEERING
MILLER AVENUE REHABILITATION
MILLER SECTIONS 3

SCALE PLAN: 1" = 4'
PROFILE: 1" = 4'
DRAWING No. 2022034-20

R:\2022034_Miller_Ave_Rehab_Source Drawings\Align-Corridor\2022034_Xsectn.dwg Dwg Created: 25-Sep-24 - _a2 standard bw.stb - Plot Date: 27-Sep-24



**MILLER AVENUE
TYPICAL SECTION**
STA. 82+50 TO P.O.E.
N.T.S.



**MILLER AVENUE
TYPICAL SECTION**
STA. 79+00. TO STA.82+50
N.T.S.



REV.	DESCRIPTION	DATE	DRAWN	CHECKED
00	ADDENDUM #1	05/26/2024	AZD	IWK

CITY OF ANN ARBOR
PUBLIC SERVICES
301 EAST HURON STREET
ANN ARBOR, MI 48107-8647
www.a2gov.org



CITY OF ANN ARBOR - PUBLIC SERVICES - ENGINEERING
MILLER AVENUE REHABILITATION
MILLER SECTIONS 4

SCALE PLAN: 1" = 4'
PROFILE: 1" = 4'
DRAWING No. 2022034-21

PREBID MEETING SIGN-IN SHEET

PROJECT:

Miller Avenue Rehabilitation

ITB 4753

MEETING SIGN-IN SHEET PLEASE PRINT

Date:

9/17/24

NAME	REPRESENTING	MAILING ADDRESS	TELEPHONE	EMAIL
Dean Mozniak	City of Ann Arbor Design	Address: _____ City, State: _____ Zip: _____	Office: () _____ Mobile: () _____ Fax No. () _____	
Aria Adegun	FHP	Address: _____ City, State: _____ Zip: _____	Office: () _____ Mobile: (272) 255-7206 Fax No. () _____	ariafayeh@fhpa.com
John Newmiec	E.T. MURKIN/ELITE Contractors	Address: 8197 Jackson City, State: A ² , MI Zip: 48109	Office: (734) 761-8050 Mobile: (734) 216-0995 Fax No. () _____	newmiec@murkinelite.com
Ben Spada	Diponio Contracting	Address: 51251 SimonsIndustrial Dr. City, State: Shelby Twp, MI Zip: 48316	Office: (586) 997-4150 Mobile: (586) 894-8499 Fax No. (586) 997-4192	bspada@diponiocontracting.com
Cameron Caruthers	Dunigan Brothers	Address: 91190 ⁵ South Street City, State: Jackson, MI Zip: 49203	Office: () _____ Mobile: (989) 965-0854 Fax No. () _____	cameron@duniganbrothers.com
Brendan Fons	Fanson Company	Address: 7644 Whitmore Lake Rd City, State: Brighton, MI Zip: 48116	Office: (810) 231-5188 Mobile: (810) 397-3065 Fax No. (810) 231-5404	bfons@fansoninc.com
TRAVOR BERTON	City Associates	Address: _____ City, State: _____ Zip: _____	Office: () _____ Mobile: () _____ Fax No. () _____	
IGOR ROTUYAL	City of A ²	Address: _____ City, State: _____ Zip: _____	Office: () _____ Mobile: () _____ Fax No. () _____	
Carson Chavis				