

ADDENDUM No. 5

RFP No. 24-23

Barton/Bandemer Park Pedestrian Tunnel Project

Due: May 29, 2024 by 11:00 a.m. (local time)

The information contained herein shall take precedence over the original documents and all previous addenda (if any), and is appended thereto. **This Addendum includes two (2) pages in addition to prints of the plan set (1 page) and replacement RFP document (5 pages).**

The Proposer is to acknowledge receipt of this Addendum No. 5 by signing and submitting Attachment B, including all attachments in its Proposal by so indicating in the proposal that the addendum has been received. Proposals submitted without acknowledgement of receipt of this addendum may be considered non-conforming.

The following forms provided within the RFP Document should be included in the submitted proposal:

- Attachment D - Prevailing Wage Declaration of Compliance
- Attachment E - Living Wage Declaration of Compliance
- Attachment G - Vendor Conflict of Interest Disclosure Form
- Attachment H - Non-Discrimination Declaration of Compliance

Proposals that fail to provide these completed forms listed above upon proposal opening may be rejected as non-responsive and may not be considered for award.

I. CORRECTIONS/ADDITIONS/DELETIONS

Changes to the RFP documents which are outlined below are referenced to a page or Section in which they appear conspicuously. Offerors are to take note in its review of the documents and include these changes as they may affect work or details in other areas not specifically referenced here.

Section/Page(s)

Change

Section III As provided in RFP No. 24-23 Document:
Form, Section 1 – Schedule of Prices as Pages 15-19.

Updates were made to several quantities as noted below. All sheets have been plotted as a single set and marked as Addendum #5 at the bottom so that all contractor bids are using the same form which incorporates all previous addenda changes.

Added pay item for Aggregate Base, 12 inch

Updated quantity for Excavation, Fdn

Updated quantity for Clean Out

Updated quantity for Underdrain, Fdn, 6 inch

Updated quantity for Hand Patching

Updated quantity for HMA Surface, Rem

Updated quantity for Reinforcement, Steel, Epoxy Coated
Updated quantity for Shared use Path, Grading, Modified
Updated quantity for Shared use Path, Concrete, 6 inch
Updated quantity for Sign, Type IIIB

Plans Page 49 of 80

Replace plan sheet. Sheet revised to update pay item for limestone date sign.

II. QUESTIONS AND ANSWERS

The following Questions have been received by the City. Responses are being provided in accordance with the terms of the RFP. Respondents are directed to take note in its review of the documents of the following questions and City responses as they affect work or details in other areas not specifically referenced here.

Question 1:

Can you reissue the bid sheets in full so that there is no confusion in which items changed over previous addenda among bidders?

Answer 1:

Yes, this addendum includes the final bid items and quantities changed through the previous addenda.

Question 2:

Can you provide an Excel spreadsheet for tabulating bids?

Answer 2:

No, it is the responsibility of the Contractor to develop an accurate summary of costs using the bid items, plans, specifications, and quantities provided.

Offerors are responsible for any conclusions that they may draw from the information contained in the Addendum.

E. Schedule of Pricing/Cost – 20 Points

Company: _____

Unit Price Bid –

<u>Item Description</u>	<u>Estimated Quantity</u>	<u>Unit Price</u>	<u>Total Price</u>
Certified Payroll Compliance and Reporting	1	LSUM	_____
Mobilization, Max	1	LSUM	_____
Clearing, Modified	0.25	Acre	_____
Tree, Rem, 19 inch to 36 inch	6	Ea	_____
Tree, Rem, 37 inch or Larger	2	Ea	_____
Tree, Rem, 6 inch to 18 inch	10	Ea	_____
Fence, Rem	117	Ft	_____
Exploratory Investigation, Vertical	150	Ft	_____
Embankment, CIP	20	Cyd	_____
Excavation, Earth	2360	Cyd	_____
Non Haz Contaminated Material Handling and Disposal, LM	7060	Cyd	_____
Subgrade Undercutting, Type I	100	Cyd	_____
Subgrade Undercutting, Type II	100	Cyd	_____
Subgrade Undercutting, Type IV	100	Cyd	_____
Backfill, Structure, CIP	5050	Cyd	_____
Excavation, Fdn	5850	Cyd	_____
Aggregate, 6A	16	Cyd	_____
Dewatering System, Excavation	1	LSUM	_____
Erosion Control, Filter Bag	2	Ea	_____
Erosion Control, Gravel Access Approach	2	Ea	_____
Erosion Control, Inlet Protection, Fabric Drop	5	Ea	_____
Erosion Control, Silt Fence	1739	Ft	_____
Subbase, CIP	3	Cyd	_____
Aggregate Base, 8 inch, Modified	365	Syd	_____
Maintenance Gravel	100	Ton	_____
Geotextile, Separator, Non-Woven	245	Syd	_____
Culv End Sect, Conc, 12 inch	3	Ea	_____
Sewer, CI E, 12 inch, Tr Det B	95	Ft	_____

Slotted Drain, Galv, 6 inch	42	Ft	_____	_____
Sewer, PVC, 6 inch, Tr Det B	153	Ft	_____	_____
Dr Structure Cover, Type C	1	Ea	_____	_____
Dr Structure, 24 inch dia	1	Ea	_____	_____
Clean Out	4	Ea	_____	_____
Underdrain, Fdn, 6 inch	286	Ft	_____	_____
Culv Bedding, Box Culv	81	Cyd	_____	_____
Culv, Precast Conc Box, 16 foot by 12 foot	60	Ft	_____	_____
HMA Surface, Rem	225	Syd	_____	_____
Hand Patching	17	Ton	_____	_____
HMA, 4EML	33	Ton	_____	_____
HMA, 5EML	33	Ton	_____	_____
Joint, Expansion, E3	39	Ft	_____	_____
Steel Sheet Piling, Permanent	2940	Sft	_____	_____
Elec Grounding System	1	Ea	_____	_____
Reinforcement, Steel, Epoxy Coated	2852	Lb	_____	_____
Substructure Conc, High Performance	39	Cyd	_____	_____
Liner, PVC, 30 mil	415	Syd	_____	_____
Timber Bridge	1	LSUM	_____	_____
Joint Waterproofing	160	Sft	_____	_____
Modular Block Wall, Cap	254	Ft	_____	_____
Modular Block Wall	857	Sft	_____	_____
Railroad Protection, Amtrak	20000	Dir	_____	_____
Curb, Conc, Det E1	735	Ft	_____	_____
Curb and Gutter, Conc, Det D2	207	Ft	_____	_____
Detectable Warning Surface	13	Ft	_____	_____
Sidewalk, Conc, 4 inch	157	Sft	_____	_____
Shared use Path, Grading, Modified	1039	Ft	_____	_____
Shared use Path, Aggregate, 8 inch, Modified	1591	Syd	_____	_____
Shared use Path, Concrete, 6 inch	1353	Syd	_____	_____
Shared use Path, Concrete, 6 inch, Decorative	148	Syd	_____	_____
Shared use Path, Aggregate, Tunnel	66	Cyd	_____	_____
Fence, Protective	1000	Ft	_____	_____

Fence, Rustic Split Rail	309	Ft	_____	_____
Ornamental Aluminum Fence, 72 inch	152	Ft	_____	_____
Fence Gate, 12 foot, for 72 inch Chain Link Fence, Special	14	Ft	_____	_____
Fence, Chain Link, 72 Inch, Special Ornamental Aluminum Fence, 48 inch	206	Ft	_____	_____
Fence, Protective, Special	124	Ft	_____	_____
Post, Steel, 3 pound	800	Sft	_____	_____
Sign, Type IIIB	177	Ft	_____	_____
Pavt Mrkg, Polyurea, 4 inch, Yellow	19	Sft	_____	_____
Pavt Mrkg, Polyurea, 12 inch, Cross Hatching, Yellow	278	Ft	_____	_____
Pavt Mrkg, Preformed Thermopl, Accessible Sym	270	Ft	_____	_____
Pavt Mrkg, Waterborne, for Rest Areas, Parks, and Lots, 4 inch, Blue	1	Ea	_____	_____
Barricade, Type III, High Intensity, Double Sided, Lighted, Furn	75	Ft	_____	_____
Barricade, Type III, High Intensity, Double Sided, Lighted, Oper	10	Ea	_____	_____
Pedestrian Type II Barricade, Temp	10	Ea	_____	_____
Pedestrian Type II Channelizer, Temp	10	Ea	_____	_____
Lighted Arrow, Type C, Furn	50	Ft	_____	_____
Lighted Arrow, Type C, Oper	2	Ea	_____	_____
Ltg for Night Work	2	Ea	_____	_____
Minor Traf Devices	1	LSUM	_____	_____
Plastic Drum, Fluorescent, Furn	1	LSUM	_____	_____
Plastic Drum, Fluorescent, Oper	35	Ea	_____	_____
Sign Cover	35	Ea	_____	_____
Sign, Type B, Temp, Prismatic, Furn	5	Ea	_____	_____
Sign, Type B, Temp, Prismatic, Oper	316	Sft	_____	_____
Sign, Type B, Temp, Prismatic, Spec, Furn	316	Sft	_____	_____
Sign, Type B, Temp, Prismatic, Spec, Oper	96	Sft	_____	_____
Traf Regulator Control	96	Sft	_____	_____
Check Dam, Cobblestone	1	LSUM	_____	_____
Riprap, Cobblestone	20	Ft	_____	_____
	21	Syd	_____	_____

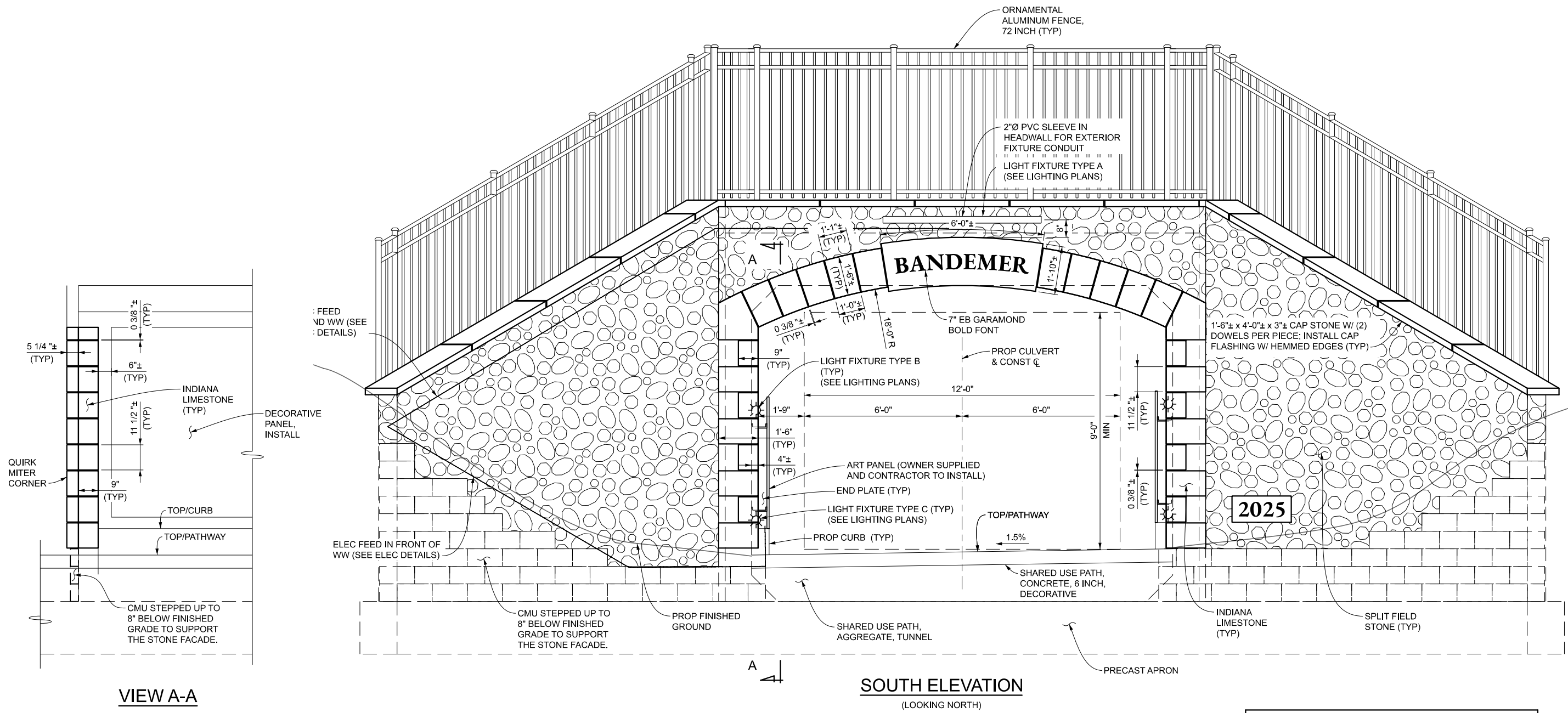
Site Preparation, Max	1	LSUM	_____	_____
Watering and Cultivating, First Season, Min	1	LSUM	_____	_____
Watering and Cultivating, 2nd Season, Min	1	LSUM	_____	_____
Aronia melanocarpa, #5 cont.	10	Ea	_____	_____
Hamamelis virginiana, #5 cont.	10	Ea	_____	_____
Viburnum acerifolium, #5 cont.	5	Ea	_____	_____
Viburnum lentago, #5 cont.	10	Ea	_____	_____
Platanus occidentalis, 3 inch	5	Ea	_____	_____
Tilia americana, 3 inch	5	Ea	_____	_____
Acer saccharum 'Bailsta' FALL FIESTA, 3 inch	5	Ea	_____	_____
Nyssa sylvatica, 3 inch	3	Ea	_____	_____
Quercus bicolor, 3 inch	3	Ea	_____	_____
Cercis canadensis, 2 1/2 inch, multi-stem	8	Ea	_____	_____
Cornus florida, 2 1/2 inch	8	Ea	_____	_____
Amelanchier x grandiflora 'Autumn Brilliance', 8 foot	6	Ea	_____	_____
Cephalanthus occidentalis, #5 cont.	5	Ea	_____	_____
Cornus stolonifera 'Farrow', #5 cont.	30	Ea	_____	_____
Lindera benzoin, #5 cont.	10	Ea	_____	_____
Calamagrostis x acutiflora 'Karl Foerster', #3 cont.	15	Ea	_____	_____
Panicum virgatum 'Shenandoah', #3 cont.	15	Ea	_____	_____
Schizachyrium scoparium, #3 cont.	15	Ea	_____	_____
Live Staking	250	Syd	_____	_____
Turf Establishment, Turf Grass, Performance	734	Syd	_____	_____
Turf Establishment, Native Seed Mix, Mesic Woodland Mix, Performance	6404	Syd	_____	_____
Conduit, PVC Schedule 80, 2 inch, Structure	150	Ft	_____	_____
Hh, Square	4	Ea	_____	_____
Conduit, DB, 1, 2 inch	550	Ft	_____	_____
Conduit, DB, 1, 1 inch	750	Ft	_____	_____
Cable, 600V, 1, 2/C#12	1525	Ft	_____	_____
Cable, Grounding Wire, 1/C#12	770	Ft	_____	_____

13"x24" Pull Box	2	Ea	_____	_____
Lighting Control Panel	1	Ea	_____	_____
Luminaire, Wall Mount, Type A	2	Ea	_____	_____
Luminaire, Linear, Type B	28	Ea	_____	_____
Luminaire, Linear, Type C	28	Ea	_____	_____
Luminaire, Pole Mount, Type D	13	Ea	_____	_____
Light Pole Foundation	13	Ea	_____	_____
Light Pole, Type D Pole	13	Ea	_____	_____
Electrical Utility Service	20000	Dir	_____	_____
Gate Valve and Box, 6 inch	1	Ea	_____	_____
Contractor Staking	1	LSUM	_____	_____
Railroad Track Monitoring	1	LSUM	_____	_____
Utility Work, Amtrak	1	LSUM	_____	_____
Utility Work, Lumen	1	LSUM	_____	_____
Limestone Cap	117	Ft	_____	_____
Limestone Block	132	Sft	_____	_____
Split Field Stone	637	Sft	_____	_____
Limestone Sign, "Bandemer"	1	Ea	_____	_____
Limestone Sign, "Barton"	1	Ea	_____	_____
Limestone Sign, "2025"	2	Ea	_____	_____
Decorative Panel, Install	1	LSUM	_____	_____
Dewatering System for Contaminated Groundwater, Site	100000	Dir	_____	_____
Decorative Panel, Furn	100000	Dir	_____	_____
Dr Structure, Tap, 6 inch	2	Ea	_____	_____
Sign, Type III, Rem	1	Ea	_____	_____
Ground Mtd Sign Support, Rem	1	Ea	_____	_____
Sign, Type IIIA	4	Sft	_____	_____
Corrugated Steel Pipe, Galv, 6 inch	48	Ft	_____	_____
Aggregate Base, 12 inch	370	Syd	_____	_____

ESTIMATED TOTAL

\$ _____

O:\WCP\015514.00 WCP\PRC - Bandemer Barton Trail Design\4.0 Dwgs\4.3 Bridge\xxxxx_details_004.dgn



VIEW A-A

SOUTH ELEVATION
(LOOKING NORTH)

MISCELLANEOUS QUANTITIES		
117	Ft	Limestone Cap
132	Sft	Limestone Block
637	Sft	Split Field Stone
1	Ea	Limestone Sign, "Bandemer"
1	Ea	Limestone Sign, "Barton"
2	Ea	Limestone Sign, "2025"

REVISIONS: _____
HORZ. DATUM: _____ VERT. DATUM: _____
SCALE: _____
CITY/VILLAGE/TOWNSHIP: _____
COUNTY: _____
CADD: _____
PROJ./MGR: _____
DATE: _____

CITY OF ANN ARBOR PRS & WASHTENAW COUNTY PRC
BARTON/BANDEMER PARK PEDESTRIAN TUNNEL PROJECT
AESTHETIC TREATMENT DETAILS