

\*\*201-205

AIN STREET (east side, part I) Main Street Historic District

1929

First National Building

Michigan National Bank

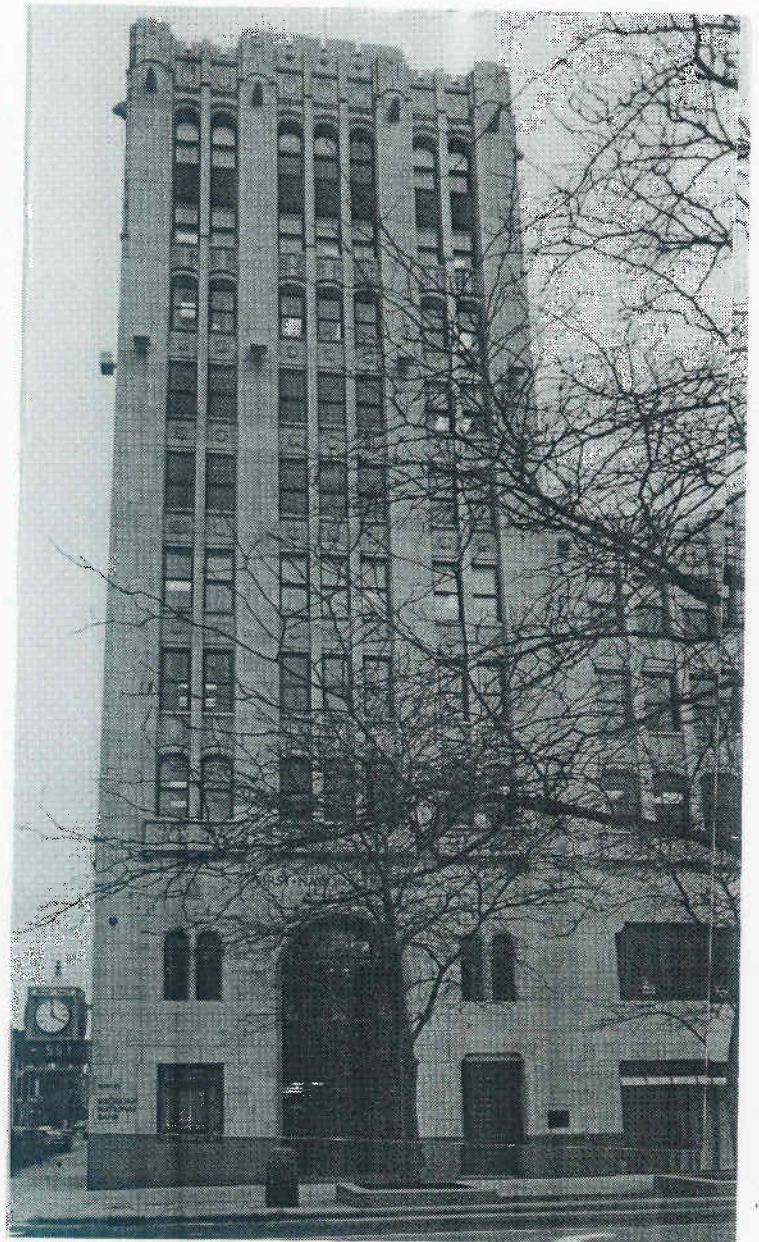
20th Century Romanesque

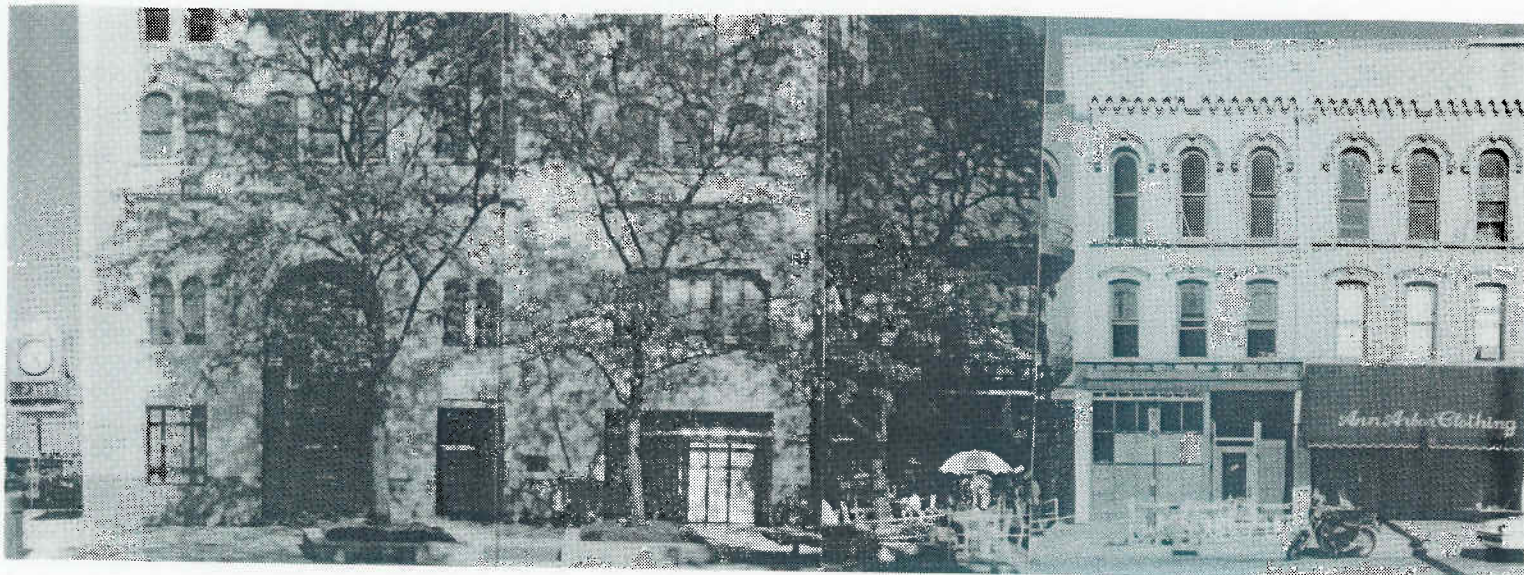
ten

terra cotta

double-hung, one-over-one

round arches, terracotta details, gargoyles





\*\*201-205

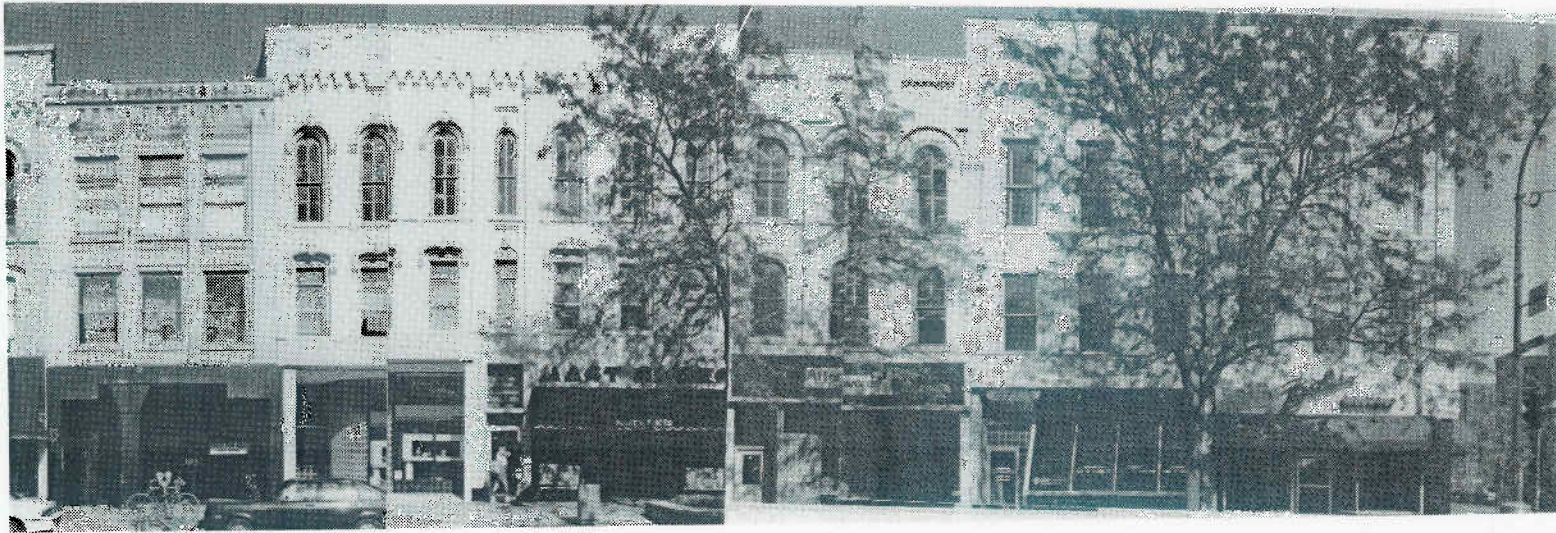
\*207

\*209

\*211

SOUTH MAIN STREET (east side, part II) Main Street Historic District

1929	1870	1868	1872
First National Building	Martin & Son undertakers	Florian Muehlig undertaker	Florian Muehlig undertaker
First National Building	The Full Moon Cafe	vacant	Ann Arbor Clothing
20th Cent. Romanesque	Italianate	Italianate	Italianate
ten	three	three	three
terracotta	brick	brick	brick
double-hung, one-over-one	double-hung, one-over-one	double-hung, one-over-one	double-hung, one-over-one
round arches, terracotta details, gargoyles	round & segmented arches, pilasters	round & segmented arches, stone trim	round & segmented arches, stone trim



213

\*215

\*217

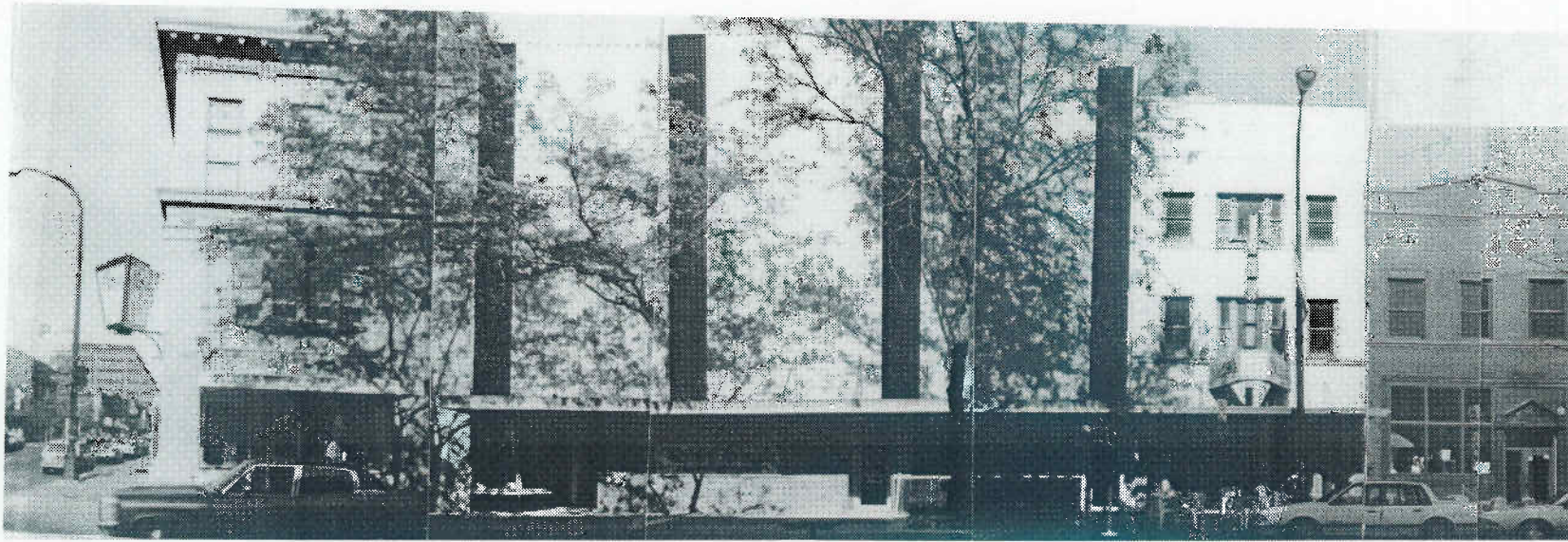
\*219

\*221

\*223

**SOUTH MAIN STREET** (east side, part III) Main Street Historic District

	1866	1866	1866	1869	1869
1908					
Business	Richards & Forbes millinery	Charles Fantle dry goods	Charles Spoor saddles, harness	Goetz & Co. groceries	John Gerner groceries
Commercial Men	Urban Jewelers	Mast's Shoes	After Words	Downtown Hair'N Co.	Beth's Boutique
Commercial	Italianate	Italianate	Italianate	Italianate	Italianate
	three	three	three	three	three
	brick	brick	brick	brick	brick
Roofing, one-	double-hung, four- over-four	double-hung, four- over-four	double-hung, six- over-four	double-hung, one- over-one	double-hung, one- over-one
Decorative cornice, brick	round and segmented arches, stone trim	round and segmented arches, stone trim	round arches, stone trim, pilasters	stone sills, brick corbels	stone sills, brick corbels



\*301

303

305

307

309

311

**SOUTH MAIN STREET** (east side, part IV) Main Street Historic District

(1880) 1906

1871

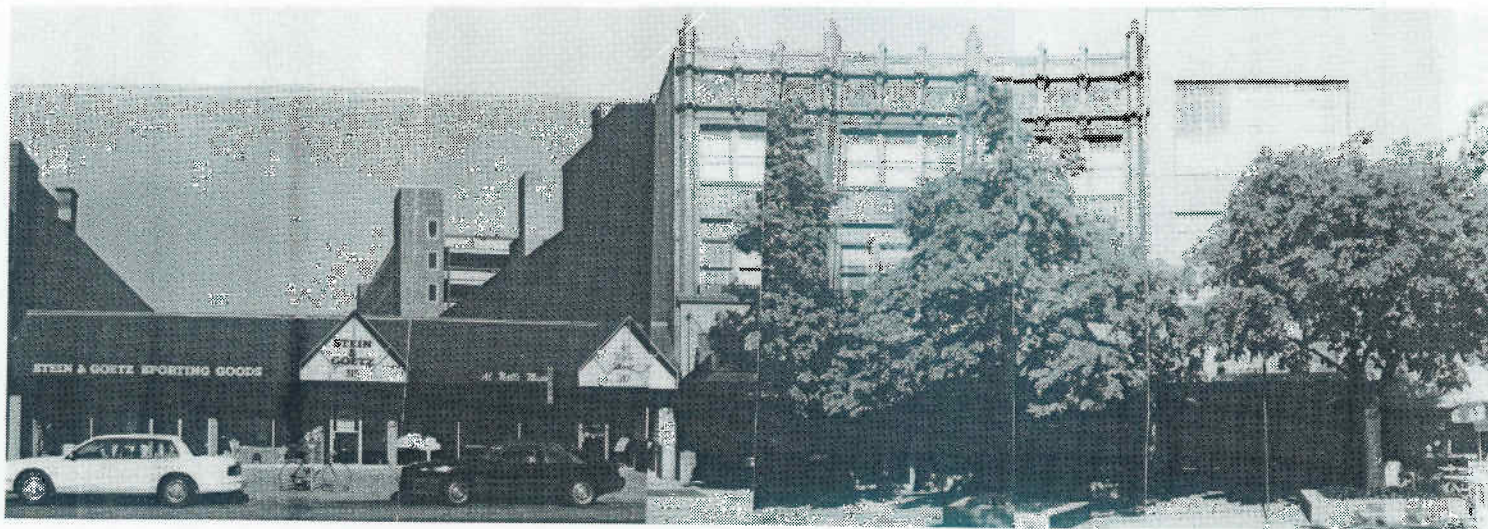
1866

1895

(1866) 1916

1930

(J. Baumgartner) /American Savings Bank	German Bank	Henry Binder saloon	J. Laubengayer meats	Anton Teufel harness	Fred Gross clothing	Muehlig & Lanphear hardware
Putzel's		Lucky Drug's		Manika's Restaurant	vacant	City Grill
Colonial Revival		Italianate (covered)			Commercial Vernacular	Commercial Vernacular
three		three			three	two
brick		brick			brick	brick
double-hung, one-over-one, transoms		covered			double-hung, one-over-one	double-hung, one-over-one
cornices, pilasters, bay window		round & segmented arches			none	stone trim, tapestry brick



(N)313-317

\*319-25

327

**SOUTH MAIN STREET**

(east side, part V) Main Street Historic District

1943	1925	1902
<b>Stein &amp; Goetz Sporting Goods</b>	<b>Marchese Building</b>	<b>Frank Wilkinson</b> stoves, furniture
Stein & Goetz Al Nalli Music	The Active Lady Ayla	Wilkinson Luggage Shop
Modern	Art Deco	Modern
one	three	three
brick	brick, terracotta	brick
fixed, single pane	double-hung, one-over-one	fixed, single pane
none	terracotta, tapestry brick, upper and lower cornices	none



332

330

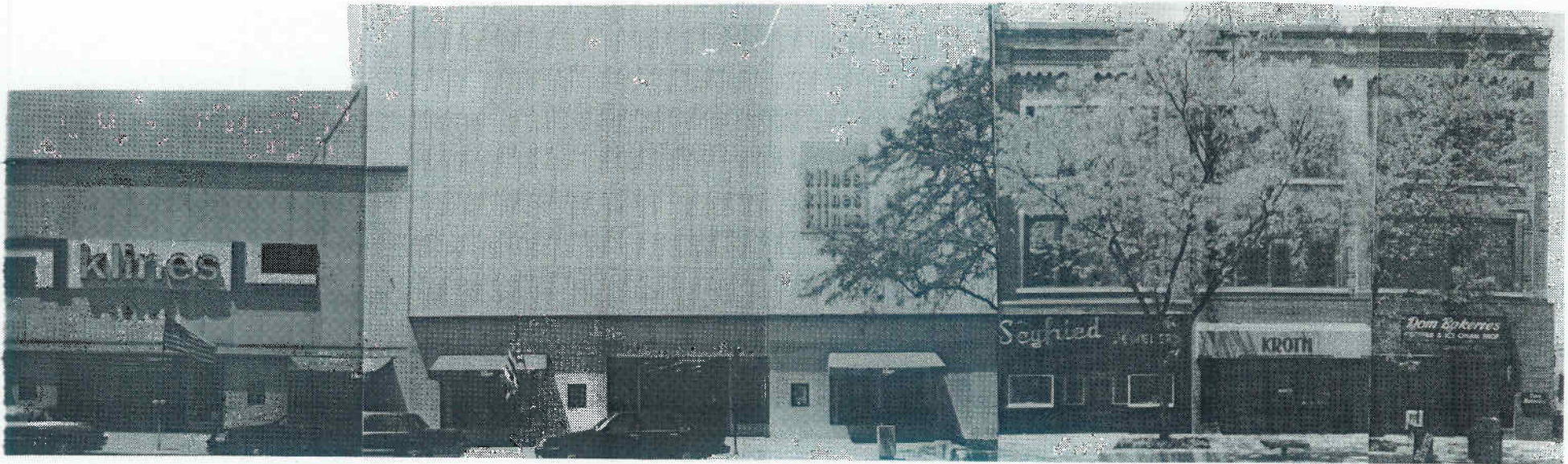
328

326

318-24

**SOUTH MAIN STREET** (west side, part I) Main Street Historic District

1940	1897	1912	1911	1916
Joe's Snappy Service	P. Willard residence	C & M Cosgrove mill'ry, atty	Orpheum Theater	J.F. Wuerth & Company Clothing
Middle Kingdom	Lovin' Spoonful	vacant	Gratzi's	Prisms II, Fiegle's
Commercial Vernacular one brick fixed	Italianate two-and-a-half brick double-hung, one-over-one	Commercial Vernacular two brick double-hung, one-over-one	Commercial vernacular three brick fixed	Ver- Commercial Vernacular (covered) three brick covered
brick quoins	dormer, window, cornice	bay stone trim	tapestry large arch	brick, unknown



312-16

306-10

304

302

300

SOUTH MAIN STREET (west side, part II) Main Street Historic District

1941

1896

1881

rs Roebuck & Co.

Crescent Works Corset Factory

J. Keck & Son, Furniture

ae's

Kline's

Seyfried  
Jewelers

Kroth  
Men's Wear

Dom  
Bakeries

ern

Commercial Vernacular (covered)

Italianate (remodeled 1910 & 1976)

three

three

ered

brick (covered)

brick

ered

covered

fixed, single pane

e

terracotta details

tapestry brick



226

222

220

214-218

**SOUTH MAIN STREET** (west side, part III) Main Street Historic District

1939	1939	1900	1949
Cunningham's Drugs	Cunningham's	Arnold Jewelers	F.W. Woolworth Co.
Parthenon	Graphic Art	The Academy	vacant
Art Moderne	Commercial Vernacular	Commercial Vernacular	Art Moderne
one	one	three	two
porcelain enamel panels	porcelain enamel panels	brick	brick
fixed	none	double-hung, one-over-one, transoms	hopper
chrome bands, concave panels	none	tapestry brick	tapestry brick in vertical panels





\*212

\*210

\*208

200

SOUTH MAIN STREET (west side, part IV) Main Street Historic District

1860	1860	1860	1926
Reinhardt & shoes	George Lutz saloon	Paul Christman stoves	S.S. Kresge Co.
in Clothing	Peaceable Kingdom	Schlanderer	Kiddie Land
lanate	Italianate	Italianate	Commercial Vernacular
	three	three	two
	brick	brick	brick
le-hung, -over-four	double-hung, four-over-one	double-hung, two-over-two	double-hung, one-over-one
l, segmented es,	stone trim,	pilasters	brick cornice, tapestry brick



	**120-124	**118	116	114	*112-10	108	106
	SOUTH MAIN STREET (west side, part V) <u>Main Street Historic District</u>						
	1866	1911	(1899)	b.1908	1908	1915	1908
ch	First National Bank	Mills Co.	M. Shaller books	Hutzel & Co. drugs	Eberbach & Sons, drugs	Wahr's Shoes	W. Goodyear dry goods
ar	Republic Bank Boersma Travel	vacant	A Slice of Heaven	vacant	Mayer-Schairer Co.	A.G. Edwards	Trustcorp
	Italianate	Commercial Vernacular	modern	Commercial Vernacular	Commercial Vernacular	Commercial Vernacular	Beaux-Arts
	three	three	three	three	three	three	three
	brick	brick	covered	brick	brick	brick	stone
te	double-hung, two-over-two	fixed, single pane	covered	double-hung, one-over-one	double-hung, transom	filled in	double-hung, one-over-one
	cornice, arches, pilas- ters, stone trim	tapestry brick	none	tapestry brick	cornice, terra-cotta	none	cornice, stone trim

\*\*100

AIN STREET (west side, part VI) Main Street Historic District

1906

Glazier Building

Trustcorp

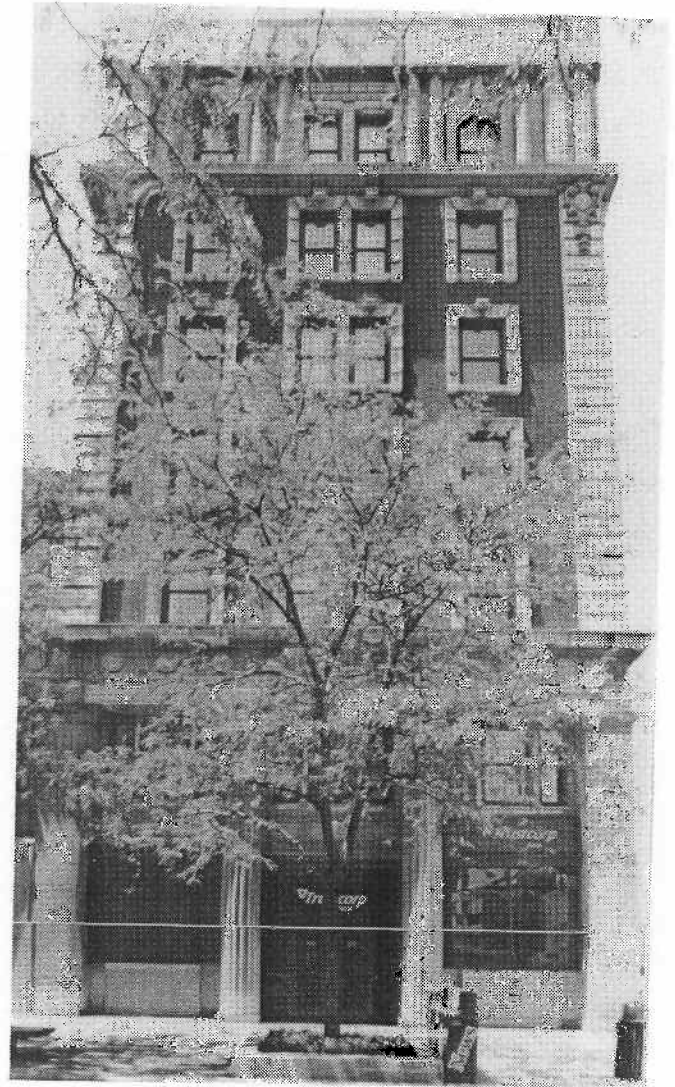
Beaux-Arts

seven

stone, brick

double-hung, one-over-one

elaborate lower cornice, stone escutcheons, quoins, and window trim, fluted columns





\*\*317-325

(N)331

MAYNARD STREET (east side, part I) State Street Historic District

1916

1974

Nickel's Arcade

McDonald's

Nickel's Arcade

McDonald's

Beaux-Arts

Modern

three

two

blond brick

brick

double-hung transom

fixed, single  
pane

"Nickels Arcade" across facade

tapestry brick



345

347

MAYNARD STREET (east side, part II) State Street Historic District

1915

1915

University Music House

Student Shoe Repair Patricia Miles

Commercial  
Vernacular

Commercial Vernacular

two

two

brick

brick

double-hung,  
one-over-one

double-hung, one-over-one

brick cornice, stone trim  
brick cornice, stone trim



209-211

213-15

217

**SOUTH STATE STREET**

(east side, part I) State Street Historic District

1916	1915	1872/1939 add.
Chubb House boarding	Foster Art Goods	Benjamin Brown residence
Beatnix; Jerry's Deli & Grill; Regency Travel, Inc.; Lake's; The Roxy	Jason's, Donburi	Paris Paris
Commercial Vernacular	Prairie	Italianate/Tudor add.
two	two	two/one
brick	stucco	brick/stucco with stone accents
double-hung, six-over- six	fixed, single panes	double-hung, four-over-four
stone cornice & sills	wood cornice, colored glass	brackets, frieze windows with hoods/ slate roof, half-timbered gables



\*231

(N)235

**SOUTH STATE STREET** (east side, part II) State Street Historic District

1941

State Street Theater

State Street Theater

Art Deco

two

brick

fixed, single panes

Art Deco brick banding, Art Deco  
metal marquis

1929

Haller's Jewelery

Marshall's Liquor

Modern

one

brick

fixed, single panes

none



01                    303-305                    307                    309                    311                    315                    317

**SOUTH STATE STREET** (east side, part III) State Street Historic District

	1902	1910	1910	1906	1906	1937
use of	Wagner Bldg.	Huston Bros. Billiards	Huston Bros. & Bowling	G.H. Wild Co. tailors	Earl Walker billiards	S.W. Trick Bldg. Kresge's
use of	Border's Book Shop	vacant	State Discount	Wild Men's Shop	Continental Restaurant	Vacant
	Commercial Vernacular	Beaux-Arts	Beaux-Arts	Commercial -	Vernacular	Art Moderne
	two	two	two	two	two	two
	brick	brick	brick	brick	brick	brick
single	fixed, panes	single double-hung, one-over-one	double-hung, one-over-one	double-hung, one-over-one	double-hung, one-over-one	fixed panes
	tapestry brick	arches, stone trim, pilasters	arches, stone trim, pilasters	brick cornice, stone trim	brick cornice, stone trim	tapestry brick





342

340

338

336

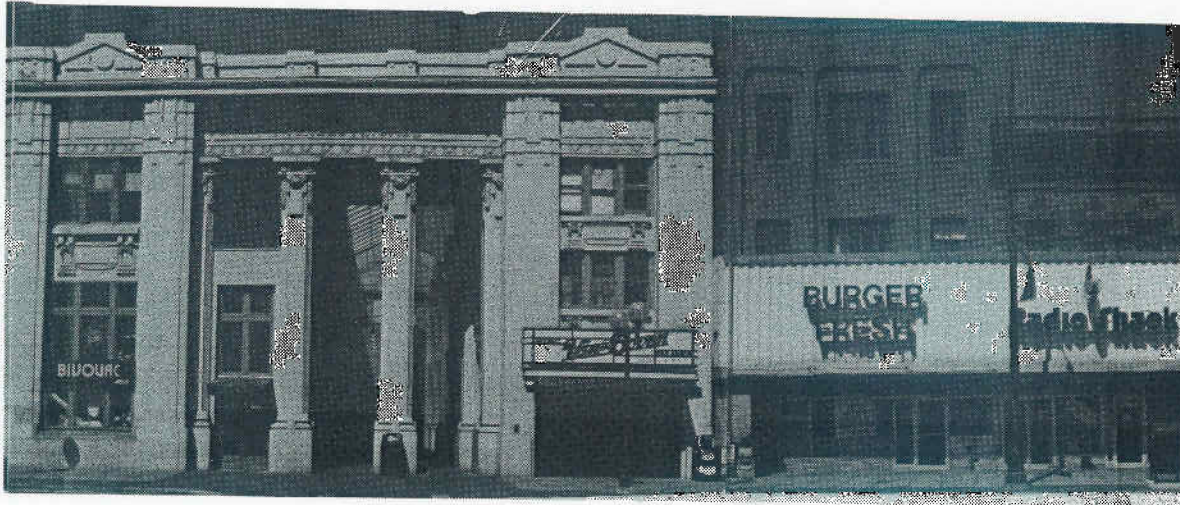
334

332

**SOUTH STATE STREET**

(west side, part I) State Street Historic District

1905	1897	c.1930	1888	1888	c.1930	
Hamilton College	Business	F. J. Schleede bookbinder	W.W. Tuttle confection.	Nickels Hall	Nickels Hall	Donn & Ely barbers
Steve's	Tice's	Ashley's	Bivouac	Louise Flowers	Bivouac	
Commercial Vernacular	Romanesque	Commercial Vernacular	Italianate	Italianate	Commercial Vernacular	
three	two	two	three	three	two	
brick	brick	brick	brick	brick	brick	
fixed, single pane	double-hung, one-over-one	double-hung, one-over-one	double-hung, one-over-one	double-hung, one-over-one	double-hung, eight-over-eight	
upper cornice, bay window	brick cornice, round arches	tapestry brick	stone arches	trim, stone arches	trim, tapestry brick	



\*\*330

\*\*328

\*\*326

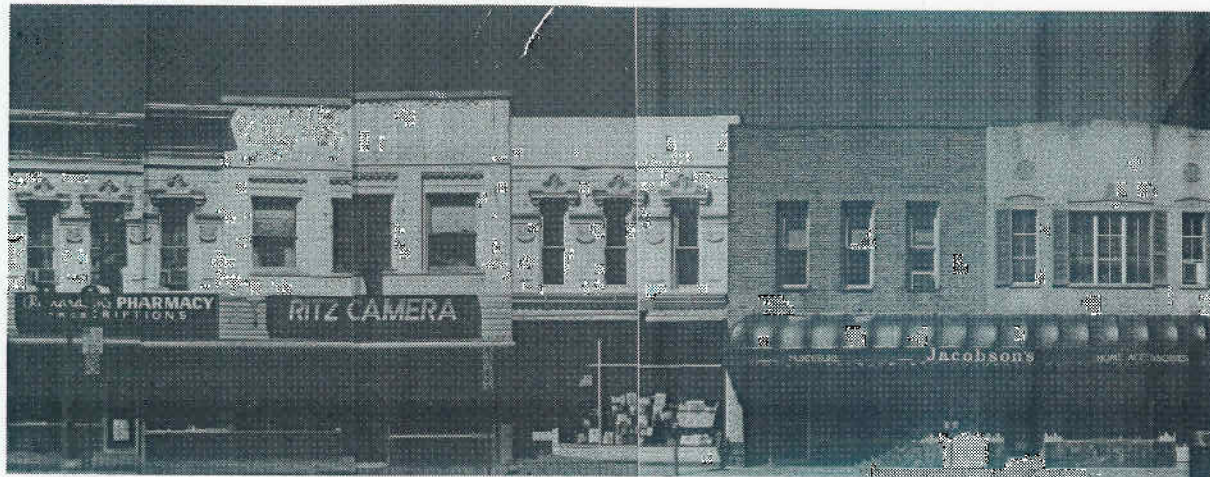
324

322

SOUTH STATE STREET

(west side, part II) State Street Historic District

1916	1916	1917	1870's	1888
Farmers' & Mechanics Bank	Nickel's Arcade	Wadhams & Co., clothing	Mrs. West Dining Hall	Sheehan & Co. books
Bivouac	Nickel's Arcade	Van Boven	Burger Fresh	Radio Shack
Beaux-Arts	Beaux-Arts	Beaux-Arts	Italianate	Queen Anne
three	three	three	three	two
terracotta	terracotta	terracotta	brick	pressed tin
double-hung, one-over-one	double-hung, one-over-one	double-hung, one-over-one	steel casement	double-hung, one-over-one
cornice, pilasters	cornice, columns	cornice, plasters	pilasters	tin cornice, details



320

318

316

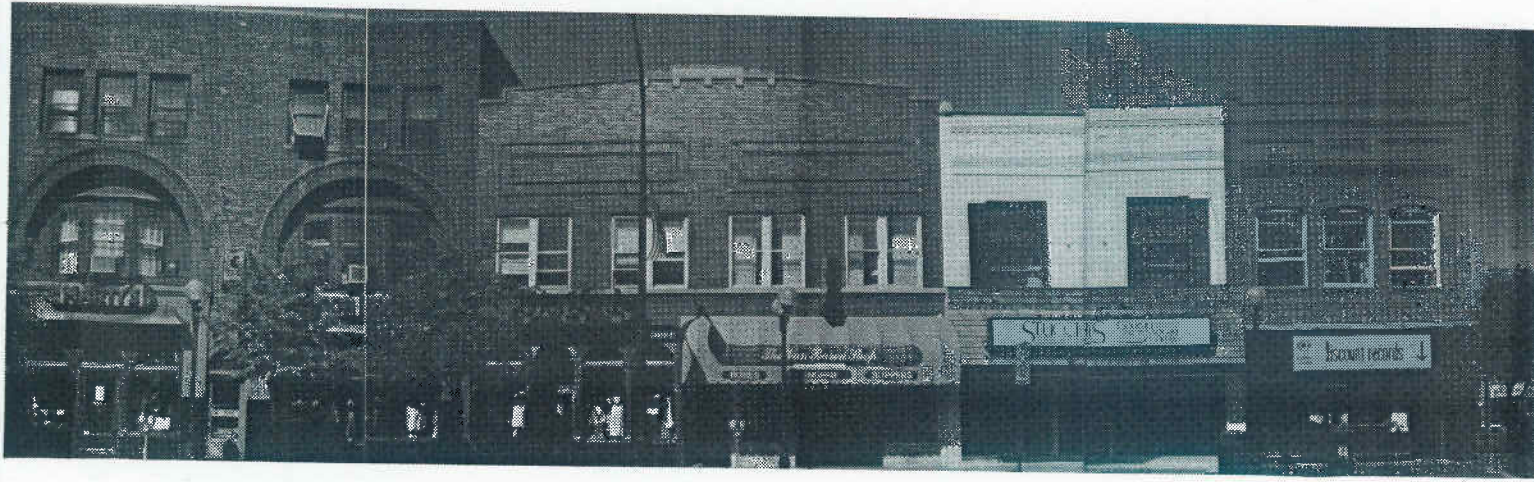
314

312

**SOUTH STATE STREET**

(west side, part III) State Street Historic District

1888	1934	1888	1960's	1931
Sheehan & Co. Books	McLean's groceries	W.D. Warner groceries	Jacobson's	The Cardinal ladies' specialties
Richardson's	Ritz Center	State Bookshop	Jacobson's	Absolute Sound
Queen Anne	Commercial Vernacular	Queen Anne	Modern	Art Deco
two	two	two	two	two
pressed tin	brick	pressed tin	brick	stone
double-hung, one-over-one	double-hung, one-over-one	double-hung, one-over-one	double-hung, one-over-one	multi-paned
tin cornice, details	tapestry brick	tin details	none	round carved medal- lions



310

308

306

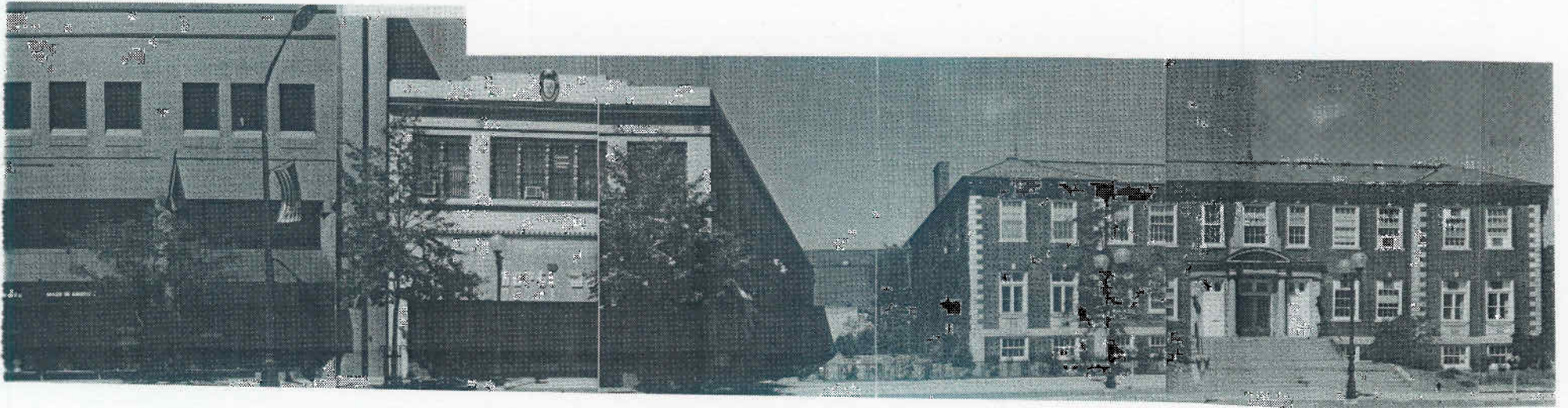
304

302

300

**SOUTH STATE STREET** (west side, part IV) State Street Historic District

1890	1890	1901	1901	1902	1901
r's Books	Butts & Hazel- wood, billiards	Skinners Bookmaker	Banfield's Shoemaker	E. Foster Confections	Reinhardt Block
ty's	Marty's	Marty's	Van Buren Shop	Stucchis	Discount Records
mercial nacular	Commercial Vernacular	Commercial Vernacular	Commercial Vernacular	Commercial Vernacular	Commercial Vernacular
ee	three	two	two	two	two
ck	brick	brick	brick	brick	brick
ble-hung, -over-one	double-hung, one-over-one	double-hung, one-over-one	double-hung, one-over-one	double-hung, one-over-one	double-hung, over-one
id arches, windows	round arches, bay windows	tapestry brick	tapestry brick, stone trim	tapestry brick	tapestry brick, name stone



0(625 E.Liberty)

214-18

204(U/M: Lane Hall)

**SOUTH STATE STREET** (west side, part V) State Street Historic District

1983

1928

1916

Street Plaza

Goldman Brothers Building

U-M YMCA

Street Plaza

Marty Walker

University of Michigan, Lane Hall

Commercial Vernacular

Georgian Revival

two

two-and-a-half

stone/brick

brick

single pane

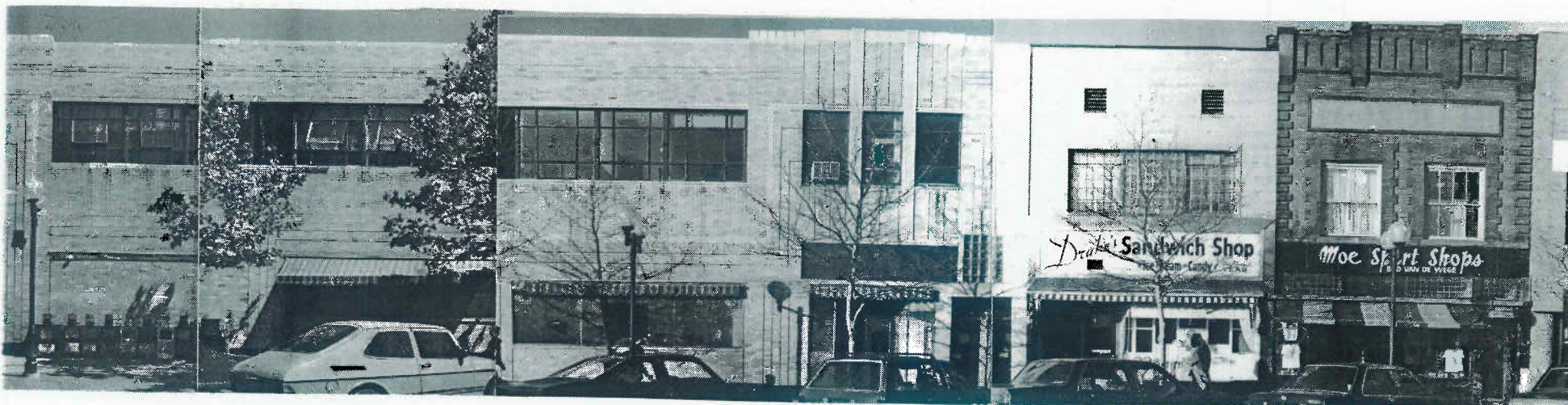
double-hung, one-over-one

double-hung, multi-paned

pillars, inset sills

medallion ("GBB"), cornice

stone quoins, entrance & center window



(317 S.State)

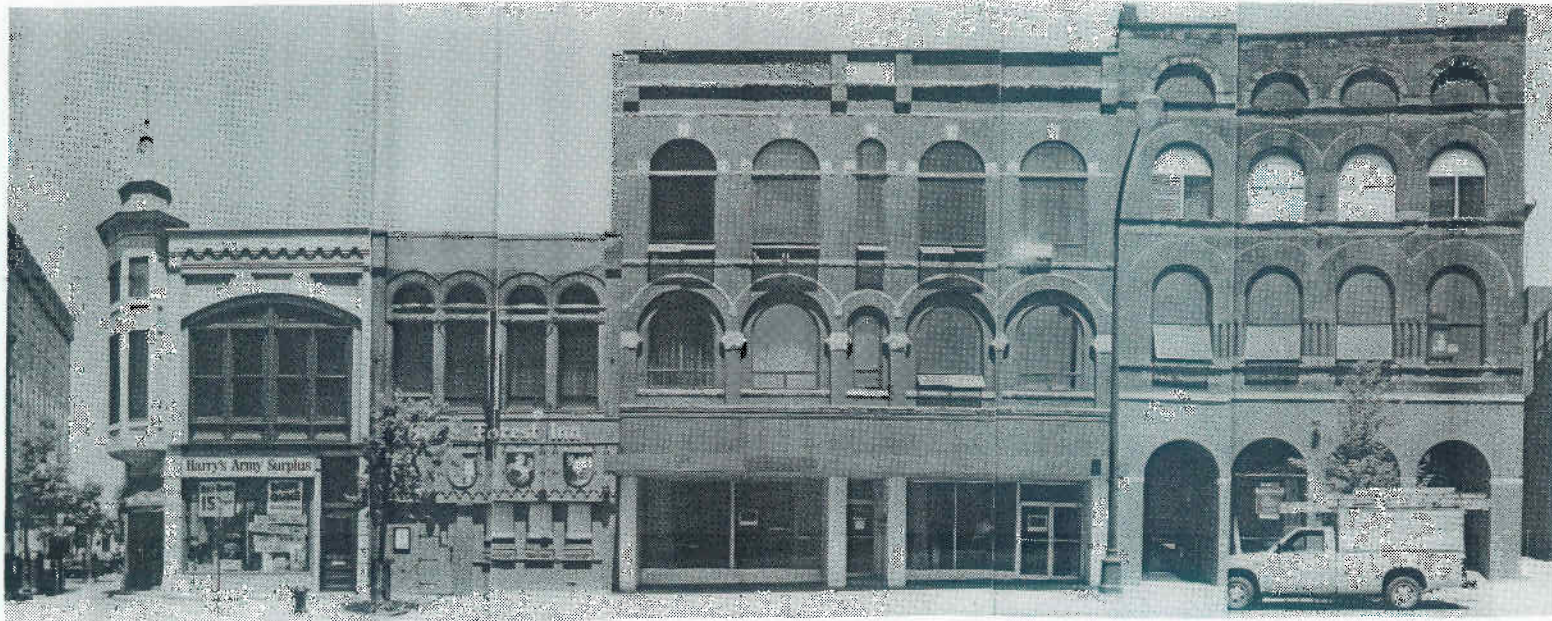
709

711

NORTH UNIVERSITY AVENUE

(part I) State Street Historic District

1937	(1899) c.1950	1905
S.W. Trick Bldg., Kresge's	Moses Kerngo, billiards	Henry & Kyer, tailors
vacant	Drake's Sandwich Shop	Moe Sport Shops
Art Moderne	Modern	Commercial Vernacular
two	two	two
brick	brick	brick
steel hopper	steel casement	double-hung, eight- over-eight
tapestry brick, curved corner	none	brick quoins, cornice



\*201

203

205

207

209-211

**EAST WASHINGTON STREET** (north side, part I) Main Street Historic District

1893	1896	c.1895	c.1895	1899
Hoelzle Meats	C.H. Major decorators	Sudworth Allmendinger	Building Music Store	Ann Arbor Music Company
Harry's Army Surplus	Metzger's	vacant	vacant	vacant
Queen Anne	Romanesque	Romanesque	Romanesque	Romanesque
two	two	three	three	three
brick	brick	brick	brick	brick
double-hung, one-over-one	single pane	awning	awning	awning & double-hung, one-over-one
brick cornice, arch, tower & finial	round arches	brick cornice, round arches,	stone trim	round arches, tapestry brick, stone trim



(N)213-215 (N)217

\*\*219

\*\*223

EAST WASHINGTON STREET

(north side, part II) Main Street Historic District

(1836) 1986

1892

1868

First Presbyterian Church

Weinmann Meats

Weinmann & Gall  
meats

Central Title Co., Austin Diamond Co.

Deluxe Drapery & Shade

Papa Romano's Pizza

Modern

Queen Anne

Italianate

two

two

two

brick

pressed tin, brick

brick

double-hung, one-over-one

double-hung,  
one-over-one

double-hung, one-over-one

tapestry brick

tin cornice, details

restored cornices, round  
arches, pilasters, stone trim





220                      \*216-218                      214                      212  
 EAST WASHINGTON STREET (south side, part I) Main Street Historic District

1927	1872	1872	1866
Salvation Army	Sorg & Son painters	Sorg & Son painters	Frederich Sorg painter
Artrain, Jeffrey Michael Powers	Tisch Inc.	Moti Mahal	Running Fit
Collegiate Gothic	Italianate	Italianate	Italianate
three	two	two	two
brick	brick	brick	brick
fixed panes	double-hung, one-over-one	awning	awning
stone trim, buttresses, quoins, shield with motto	cornices, arches, pilasters	arches, pilasters	arch



)208

(N)204-206

\*202

EAST WASHINGTON STREET (south side, part II) Main Street Historic District

1960's	(1868) 1960's	1928
Places el	(Conrad Krapf, carpenter, J. Kettner, saloon) Hobbs & Black Architects	Ypsi-Ann Building
her Realty Co Discount	Fawcett & Cavanaugh attorneys	Running Fit
rn	Modern	Commercial Vernacular
	two	seven
k	brick	brick
d.	fixed	fixed and hopper
	none	limestone diamonds, tapestry brick

\*200-202

ON STREET (south side, part III) Main Street Historic District

1928

Ypsi-Ann Building

Washington Square Building

Commercial Vernacular

seven

brick

fixed with hoppers

limestone diamonds, tapestry brick







\*\*122

120-118

116

114

112

WEST WASHINGTON STREET

(north side, part I) Main Street Historic District

1869

(1908) 1976

1908

1908

1869

ner/Schneider  
cksmith

M. Staebler  
groceries

J. Livernois  
sausages

John W. Illi  
bakery

William Frey  
saloon

William Herz  
painting & decorating

Rio Bar

Old German

Art Deco Design

Cracked Crab

Cracked Crab

lianate

Modern

Chicago Style

Chicago Style

Italianate

ee

three

three

three

two

ck

brick

brick

brick

brick

ble-hung,  
r-over-four

fixed panes

double-hung,  
eight-over-eight

double-hung,  
two-over-two

double-hung, one-over-  
one

ances, round &  
mented arches,  
asters, stone

ornate wrought-iron sign

brick cornice,  
stone trim

brick cornice,  
stone trim

original cornices,  
segmented arches, stone  
trim,



\*\*(126 S. Main)

WEST WASHINGTON STREET (north side, part II) Main Street Historic District

1867

Phillip Bach Dry Goods

Hooper, Hathaway, Price. Bauche & Wallace  
attorneys

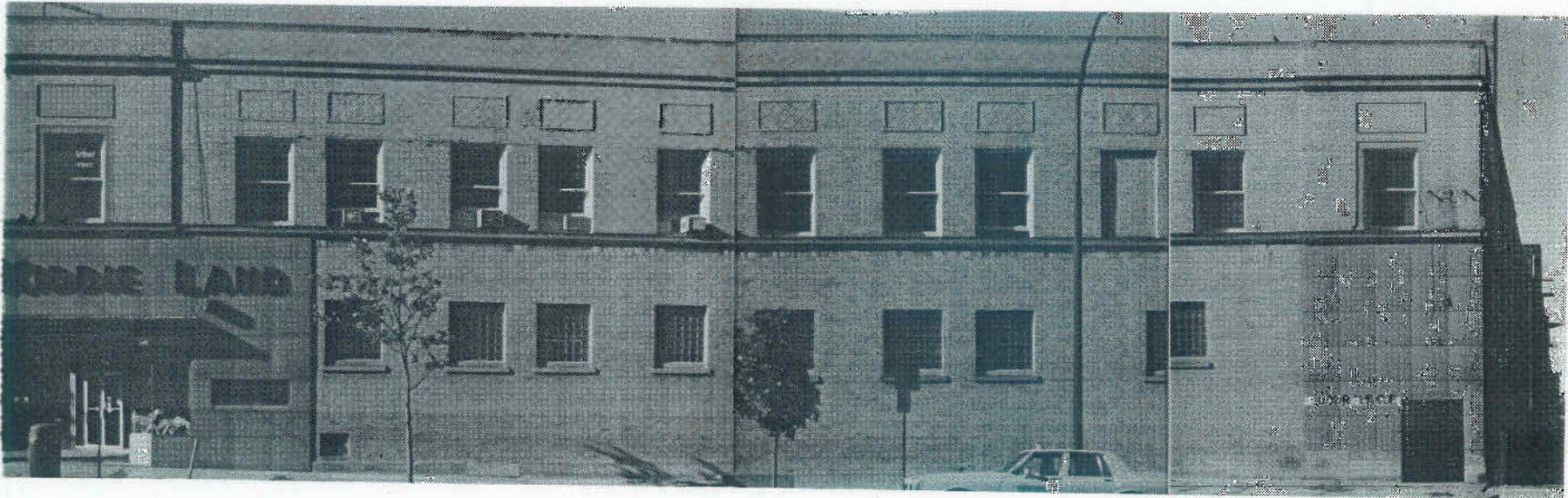
Italianate

three

brick

fixed, single pane

cornices, round and segmented arches,  
stone trim, pilasters



(200 S. Main)

WEST WASHINGTON STREET (south side, part I) Main Street Historic District

1926

S.S. Kresge Co.

Kiddieland

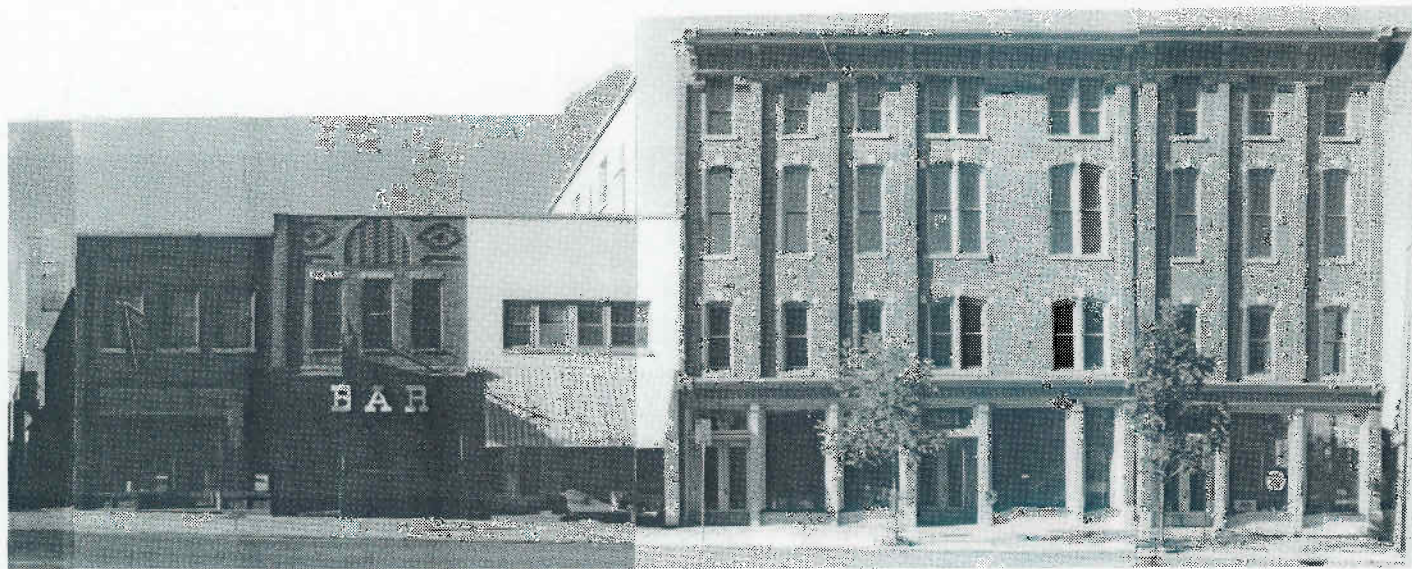
Commercial Vernacular

two

brick

double-hung, one-  
over-one

brick cornice,  
tapestry brick



113      115      117      \*\*119      \*\*121      \*\*123  
 WEST WASHINGTON STREET (south side, part II) Main Street Historic District

c.1920	1897	(1870's) 1960's	1885	1885	1885
tave Vogel ksmith	Fred Reimold saloon	Heinzmann & Son leather (1886)	Germania Hotel	Germania Hotel	Germania Hotel
el's	The Flame Bar	Fresh Cream Cafe	16 Hands	The Earle	Ann Arbor Glassworks
mercial nacular	Commercial Vernacular	(Italianate) Modern	Italianate	Italianate	Italianate
	two	(four) two	four	four	four
ck	brick	brick	brick	brick	brick
ble-hung, -over-two	double-hung, one-over-one	double-hung, one-over-one	double-hung, one-over-one	double-hung, one-over-one	double-hung, one-over-one
ne sills	tapestry brick, stone trim	none	cornices, seg- mented arches, pilasters	cornices, seg- mented arches, stone trim,	cornices, segmented arches, stone trim, pilasters





337

(N)(344 S. Division)

EAST WILLIAM STREET

(north side, part I) East William Street Historic District

1896

Lewis C. Goodrich, clerk

Credit Union offices

Colonial Revival

two

clapboard

double-hung, one-over-one

front gable

porch brackets, shingled gable

1965

Dahlmann Apartments

apartments

Modern

three-and-a-half

brick

metal sliding

flat

none



(347 Maynard) 603-605      607      609-611      \*\*611 1/2

EAST WILLIAM STREET (north side, part II) State Street Historic District

1915	1915	1906	1906	1878
University house	Music Oren's Cafeteria	Stafford Nickels meats	Helber Bros., groc. Paul Meyer, newsdr.	DKE Shant
Patricia Miles	The Stereo Shoppe	College Repair	Shoe White Market	DKE Shant
Commercial vernacular	Commercial Vernacular	Commercial Vernacular	Commercial Vernacular	Gothic Revival
two	two	two	two	two
brick	brick	brick	brick	brick
double-hung, one-over-one	double-hung, one-over-one	double-hung, one-over-one	double-hung, one-over-one	fixed, stained glass
brick cornice, stone trim	brick cornice	brick cornice, plain arches	brick cornice, plain arches	cornice, stone trim, pilasters, chimneys, date stone



613-617

619

621(342 S.State)

**EAST WILLIAM STREET**

(north side, part III) State Street Historic District

1899

Eugene Lambert  
shoemaker

Tubby's Sub Shoppe

Queen Anne

two

metal over brick

fixed, single pane

tin cornice, details

1892

Lewis Stevens  
barber & baths

Jessica's  
Cookies

Queen Anne

two

metal / brick

fixed, single  
pane

tin detailing

1905

Hamilton Business College

Hair Express

Commercial Vernacular

three

brick

fixed, single pane

upper cornice, bay window



\*340

332

328

EAST WILLIAM STREET

(south side, part I) East William Street Historic District

1860

1925

1904

Marshall, carpenter/builder

The Washtenaw, apartments

August G. DeFries, art store

ani, Indian restaurant

apartments

residence

Empire

Beaux Arts

Colonial Revival

d-a-half

three-and-a-half

two

ard

brick and limestone

clapboard

-hung, one-over-one

double-hung, six-over-one

double-hung, one-over-one

e mansard

flat

hipped with front gable

ts, dentils, dormers with round-  
windows, corner pilasters

stone trim, arched doorway flanked by blind arches  
and fluted pilasters

porch with field stone base,  
shingled gable



3                      314  
 EAST WILLIAM STREET

310                      308                      (403 S. Fifth)  
 (south side, part II) East William Street Historic District

853	1870	1892	1908	1883
Ingalls er (1894)	Marcia Rockwell widow, Dr. John	Wallace W. Bliss billiards	Rev. William S. Jerome, U-M Library	William J. Merkle, sec. & treas., Krause Tanning Co.
e	residence	residence	residence	residence
te	Gothic Revival	Queen Anne	Craftsman	Queen Anne
	two	two	two	two-and-a-half
	asphalt	asbestos	shingle, stucco	wood
ung, -one	double-hung, six-over-six	double-hung, one-over-one	double-hung, nine-over-one	double-hung, one-over-one
	side gable	hipped	front gable	hipped
Classic entry	front gable, long windows	round tower, colored glass	half-timbered gable, porch w/stone base	bracketed gable, king post trim, window hoods



(402-4 S. Fifth Ave.)

212

(403-15 S. Fourth)

EAST WILLIAM STREET

(south side, part III) East William Street Historic District

1894

1897

1845

George E. Bliss, baggageman  
Lauren L. Henion, travel agent

Elmer S. Cushman, traveling salesman

Joseph T. Jacobs  
clothier

Needlepointe Tree

residence

Muehlig Funeral Chapel

Colonial Revival

Queen Anne

Italianate

two-and-a-half

two-and-a-half

two-and-a-half

brick/wood shingle

wood

brick

double-hung, one-over-one

double-hung, one-over-one

double-hung, one-over-one

cross-gable

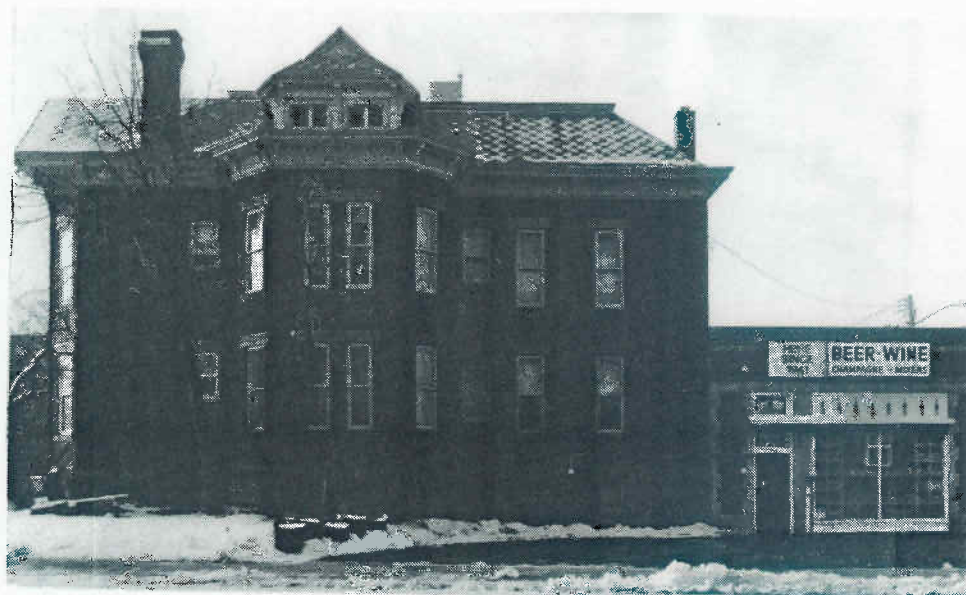
front-gabled

hipped

none

wrap around porch, shingled gables

brackets, carved stone lintels



\*(402 S. Fourth Ave.) 114

EAST WILLIAM STREET (south side, part IV) East William Street Historic District

1872

Ottmar Eberbach, pharmacist  
 residence  
 Queen Anne  
 two-and-a-half  
 brick  
 double-hung, one-over-one  
 hipped and gabled  
 gables, cornice, stone lintels

1938

Beer Depot  
 Beer Depot  
 Commercial Vernacular  
 one  
 brick  
 fixed, single pane  
 flat  
 stone quoins