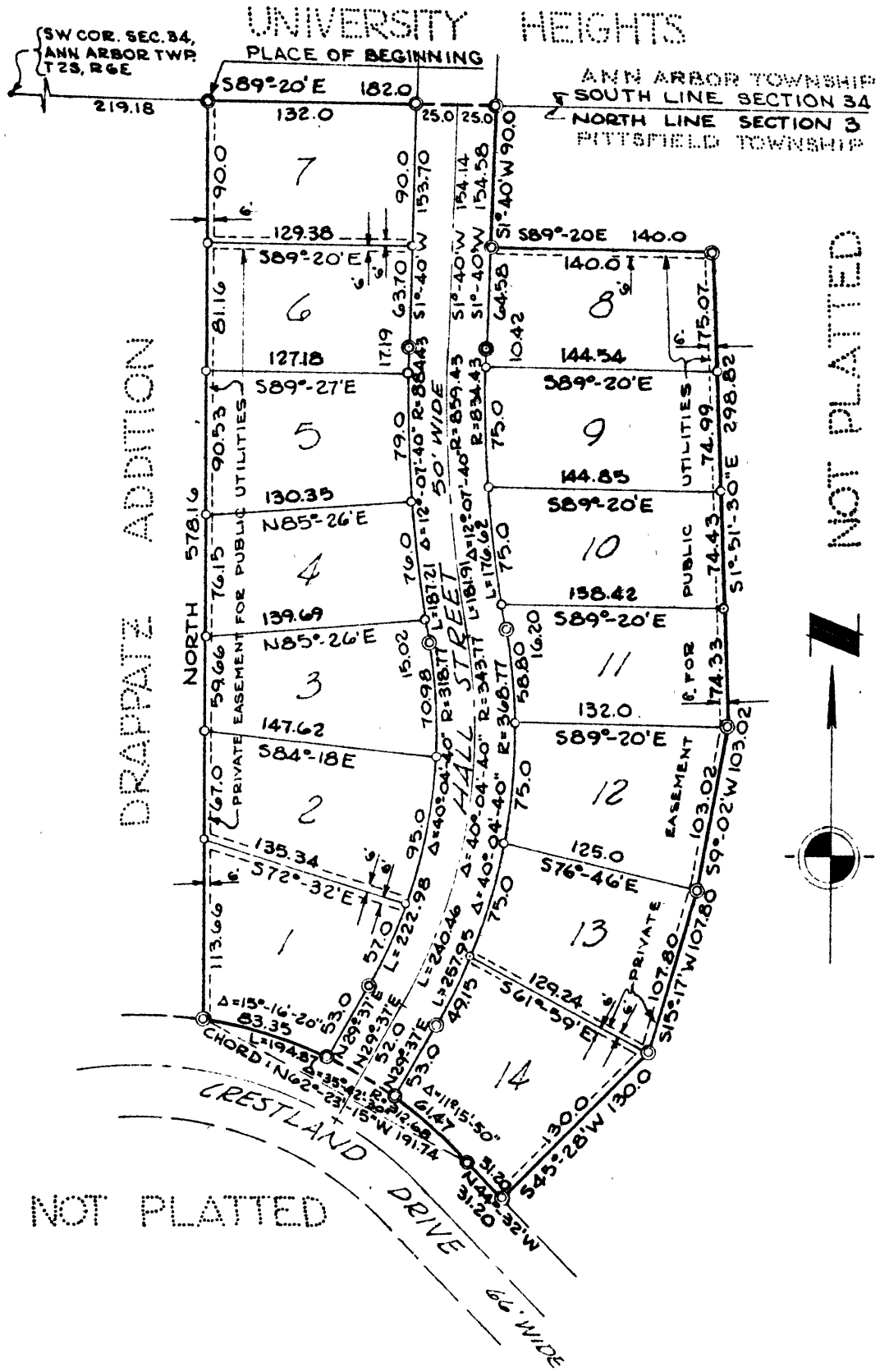


DRAPPATZ SECOND ADDITION

TO THE CITY OF ANN ARBOR, PART OF THE NW 1/4 OF SECTION 3, T3S, R6E, CITY OF ANN ARBOR, WASHTENAW COUNTY, MICHIGAN

SCALE: 1"=100'

ALL DIMENSIONS IN FEET AND DECIMALS THEREOF
 ALL DIMENSIONS ON CURVES ARE ARC LENGTHS
 SURVEY BY ATWELL-HICKS, INC.



CERTIFICATE OF APPROVAL BY THE CITY PLANNING COMMISSION

This plat was approved by the Planning Commission of the City of Ann Arbor, Michigan at a meeting held on the 28th day of JUNE, 1960.

Dean W. Coston
 Dean W. Coston, Chairman
John D. Paul
 John D. Paul, Secretary

CERTIFICATE OF MUNICIPAL APPROVAL

This plat was approved by the Common Council of the City of Ann Arbor at a meeting held July 5, 1960, and that the width of lots is in compliance with requirements of Section 30, Act 172, of 1929, as amended.

Fred J. Looker
 Fred J. Looker, Clerk

COUNTY TREASURER'S CERTIFICATE
 Office of County Treasurer, Washtenaw County

I hereby certify, that there are no tax liens or titles held by the State on the lands described hereon, and that there are no tax liens or titles held by individuals on said lands for the five years preceding the 6th day of June, 1960, and that the taxes for said period of five years are all paid, as shown by the records of this office. This certificate does not apply to taxes, if any, now in process of collection by township, city or village collecting officers.

W.F. Verner
 W.F. Verner, (County Treasurer)

APPROVAL BY COUNTY PLAT BOARD

This plat was approved on the 7th day of July, 1960, by the Washtenaw County Plat Board.

Patricia Newkirk Hardy John H. Flook
 Patricia Newkirk Hardy (County Register of Deeds) (County Drain Commissioner)
J. Martin Rempp Herbert G. Loeffler
 J. Martin Rempp (Auditor) Herbert G. Loeffler (Auditor)
John P. Cook
 John P. Cook (Auditor)

DESCRIPTION OF LAND PLATTED

The land embraced in the annexed plat of DRAPPATZ SECOND ADDITION to the City of Ann Arbor, part of the NW 1/4 of Section 3, T3S, R6E, City of Ann Arbor, Washtenaw County, Michigan is described as follows:
 Commencing at the SW corner of Section 34, T2S, R6E; thence along the Township line, S 89° -20' E 219.18 feet for a PLACE OF BEGINNING; thence S 89° -20' E 182.0 feet; thence S 1° -40' W 90.0 feet; thence S 89° -20' E 140.0 feet; thence S 1° -51' -30" E 298.82 feet; thence S 9° -02' W 103.02 feet; thence S 15° -17' W 107.80 feet; thence S 45° -28' W 130.0 feet; thence N 44° -32' W 31.20 feet; thence 194.87 feet in the arc of a circular curve concave to the SW, radius 312.68 feet, chord N 62° -23' -15" W 191.74 feet; thence due North 578.16 feet to the Place of Beginning, containing 14 lots numbered 1 through 14 inclusive.

SURVEYOR'S CERTIFICATE

I hereby certify that the plat hereon delineated is a correct one and that permanent metal monuments consisting of bars of not less than one-half inch in diameter and 36 inches in length, or shorter bars of not less than one-half inch in diameter lapped over each other at least 6 inches with an over-all length of not less than 36 inches, encased in a concrete cylinder at least 4 inches in diameter and 36 inches in depth have been placed at points marked (●) as thereon shown at all angles in the boundaries of the land platted, at all the intersections of streets, intersections of alleys, or of streets and alleys, and at the intersections of streets and alleys with the boundaries of the plat as shown on said plat.

Robert J. Jagow
 Robert J. Jagow
 Registered Surveyor # 6998

Register's Office
 Washtenaw County

Plat of *Drappatz Second Addition*
 was recorded this 12th day of July, A.D., 1960 at 2:54 o'clock P.M. in Liber 15 of plats on Page 24

Patricia Newkirk Hardy
 Patricia Newkirk Hardy
 ORIGINAL ON FILE

I hereby certify this one is a correct copy of the original plat forwarded to the Auditor General for recording.
 Date July 11, 1960
 FILED IN AUDITOR GENERAL'S DEPT.
 Date July 13, 1960
 EXAMINED AND APPROVED
 Date July 14, 1960
Otis M. Smith
 OTIS M. SMITH
 AUDITOR GENERAL
D. L. MacErcy
 D. L. MacErcy • Plat Engineer

DEDICATION

KNOW ALL MEN BY THESE PRESENTS, that we, Elmer A. Clark and Frances E. Clark, his wife and Harvey L. Rettich and Ruth M. Rettich, his wife, as proprietors, and Arthur R. Drappatz and Emilie Drappatz, his wife, as mortgagees have caused the land embraced in the annexed plat to be surveyed, laid out and platted to be known as DRAPPATZ SECOND ADDITION To the City of Ann Arbor, part of the NW 1/4 of Section 3, T3S, R6E, City of Ann Arbor, Washtenaw County, Michigan and that the street as shown on said plat is hereby dedicated to the use of the public.

Signed in the Presence of:

H.F. Gross
 H. F. Gross Witness
Eleanor Kilpatrick
 Eleanor Kilpatrick Witness

Elmer A. Clark
 Elmer A. Clark
Frances E. Clark
 Frances E. Clark
Harvey L. Rettich
 Harvey L. Rettich
Ruth M. Rettich
 Ruth M. Rettich
Arthur R. Drappatz
 Arthur R. Drappatz
Emilie Drappatz
 Emilie Drappatz

ACKNOWLEDGMENT

STATE OF MICHIGAN)
) ss.
 County of Washtenaw)

On this 25th day of June, A.D., 1960 before me, a Notary Public, in and for said County, personally came the above named Elmer A. Clark and Frances E. Clark, Harvey L. Rettich and Ruth M. Rettich, and Arthur R. Drappatz and Emilie Drappatz, known to me to be the persons who executed the above dedication and acknowledged the same to be their free act and deed.

Eleanor Kilpatrick
 Eleanor Kilpatrick
 Notary Public, Washtenaw County, Michigan

My Commission expires March 3, 1964.