

FILED IN AUDITOR GENERAL'S DEP.  
 6-8-36  
 J. J. Gummer  
 Deputy Auditor General

I HEREBY CERTIFY THAT THIS COPY IS A TRUE COPY OF THE MAP OR PLAT FORWARDED TO THE BOARD OF DEEDS FOR RECORD.  
 J. J. Gummer  
 Deputy Auditor General

(Copy)  
**"ASSESSOR'S PLAT NO. 30**

BEING A REPLAT OF BLOCKS 6 AND 7 SOUTH, RANGES 4 AND 5 EAST, MAYNARD AND MORGAN'S ADD. TO THE CITY OF ANN ARBOR.

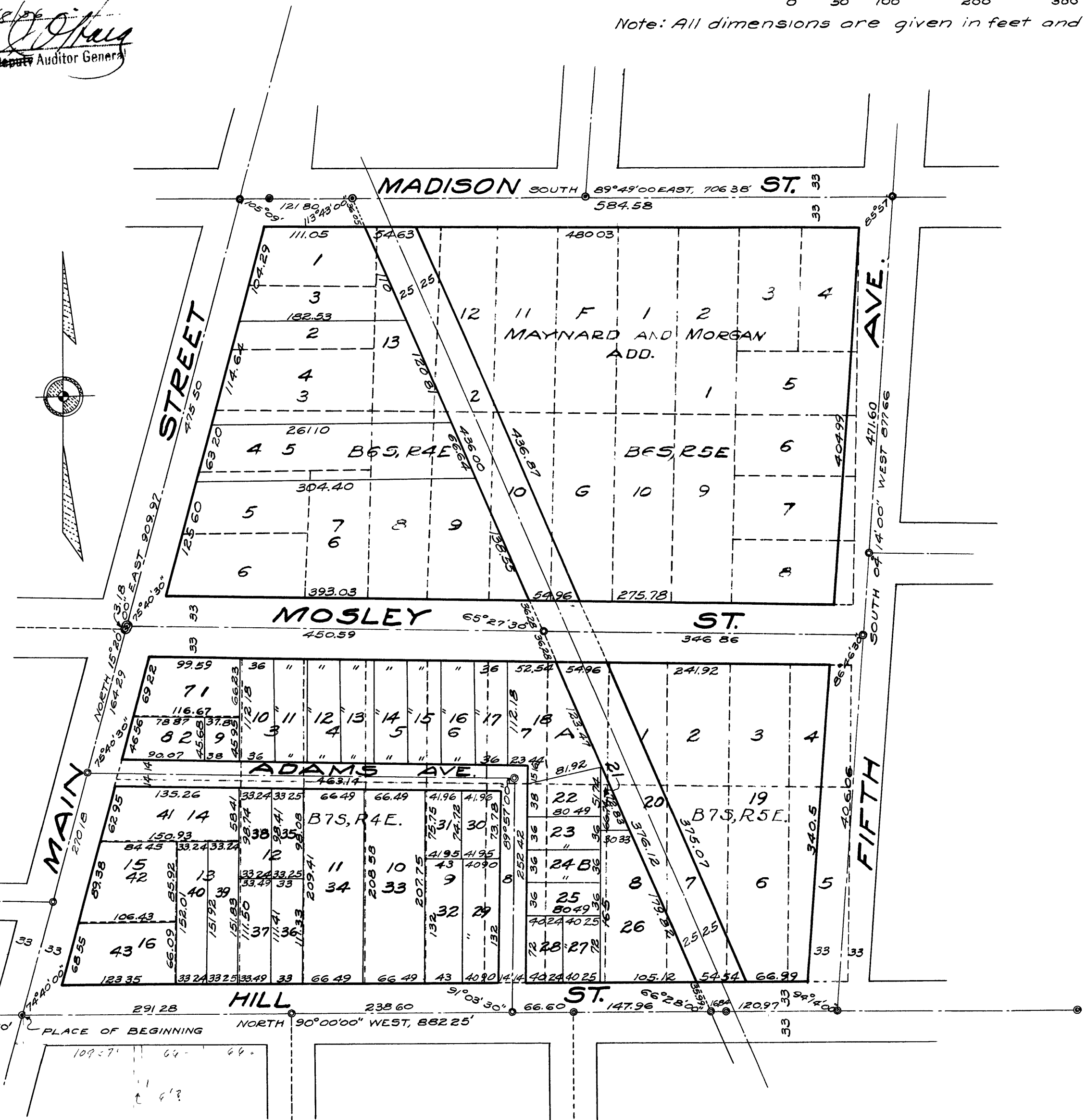
**CITY OF ANN ARBOR  
 WASHTENAW CO. MICHIGAN**

Scale: One Inch=One Hundred Feet.  
 0 50 100 200 300

Note: All dimensions are given in feet and decimals thereof.

COPY  
 Register's Office  
 Washtenaw County, Mich.  
 Plat of Assessor's Plat No. 30  
 City of Ann Arbor  
 was recorded this 4th day of June A.D. 1936 at 8:45 O'Clock  
 A.M. in Liber 9 of Plate  
 Katherine J. Shan  
 Register of Deeds  
 ORIGINAL ON FILE

Examined and Approved  
 J. J. Gummer  
 Deputy Auditor General



**DEDICATION**

KNOW ALL MEN BY THESE PRESENTS: That I, Herbert W. Crippen, Assessor of the City of Ann Arbor, Washtenaw County, Michigan, by virtue of authority in me vested by Section 51, Act 172, P.A. of 1929, having been duly authorized by the Common Council of the City of Ann Arbor, Washtenaw County, Michigan, have caused the land described in the annexed plat to be surveyed, laid out and platted, to be known as "Assessor's Plat No. 30, being a replat of Blocks 6 and 7 South, Ranges 4 and 5 East, Maynard and Morgan's Add. to the City of Ann Arbor," being a part of S.E. Quarter of Sec. 29, Town 2 South, Range 6 East, Michigan, in the City of Ann Arbor, Washtenaw County, Michigan, and that the streets and alleys as shown on said plat are now being used for such purposes.

Witnesses:

Carl H. Schallhorn

Herbert W. Crippen  
 Assessor of the City of Ann Arbor  
 Washtenaw Co Michigan

**ACKNOWLEDGMENT**

STATE OF MICHIGAN } SS.  
 COUNTY OF WASHTENAW }

On this 4th day of May A.D. 1936, before me a Notary Public in and for said county personally came the above named Herbert W. Crippen, Assessor of the City of Ann Arbor, Washtenaw County, Michigan, known to me to be the person who executed the above dedication and acknowledged the same to be his free act and deed as such Assessor.

Clara M. Mast  
 Notary Public in and for Washtenaw County, Michigan.

My Commission expires June 29-1936

**DESCRIPTION**

Commencing at the South Quarter post of Section 29, Town 2 S., Range 6 E., Michigan, thence N. 90°00'00"E, 163.10 feet to the Place of Beginning on the center line of Main St, thence N. 15°20'00"E, 909.97 feet, thence S. 89°49'00"E, 706.38 feet, thence S. 04°14'00"W, 877.66 feet, thence N. 90°00'00"W, 882.25 feet to the Place of Beginning.

**SURVEYOR'S CERTIFICATE**

I hereby certify that the plat hereon delineated is a correct one and that permanent metal monuments of not less than one inch in diameter and fifteen inches in length set in a concrete base at least four inches in diameter and forty eight inches in length have been placed at all points marked thus (circle with dot) as hereon shown at all angles in the boundaries of land platted, at all the intersections of streets, intersections of alleys, or of streets and alleys and at the intersections of streets and alleys with the boundaries of the plat as shown on said plat.

George H. Sandenburgh  
 Registered Civil Engineer

STATE OF MICHIGAN } SS.  
 COUNTY OF WASHTENAW }

Geo. H. Sandenburgh of Ann Arbor, Washtenaw Co., Michigan, deposes and says that he is the City Engineer of said City of Ann Arbor and that he has prepared an Assessor's Plat entitled, "Assessor's Plat No. 30, being a replat of Blocks 6 and 7 South, Ranges 4 and 5 East, Maynard and Morgan's Add., to the City of Ann Arbor," and that lot No. 21 as shown on said plat which has no apparent outlet is owned by the owner of lot No. 20, and has an outlet over Lot 20 to a public highway.

George H. Sandenburgh  
 Registered Civil Engineer

Subscribed and sworn to before me this 4th day of May 1936

Clara M. Mast  
 Notary Public in and for Washtenaw Co.

My Commission expires June 29-1936

**CERTIFICATE OF MUNICIPAL APPROVAL**

This plat was approved by the Common Council of the City of Ann Arbor, Washtenaw County, Michigan, at a meeting held this 4th day of May 1936.

J. J. Gummer  
 City Clerk

This plat was approved by the Board of Public Works of the City of Ann Arbor, Washtenaw County, Michigan, at a meeting held this 6th day of May 1936.

J. J. Gummer  
 City Clerk

**CERTIFICATE OF APPROVAL BY BOARD OF COUNTY AUDITORS**

Approved by the Board of County Auditors of Washtenaw County, Michigan, this 27th day of May 1936.

Otto A. Quick  
 Chairman  
 Elmer L. Brown

1 OF 1  
 00460001  
 ASSessor's PLAT NO. 30  
 LIBER: 9  
 PAGE: 34  
 06/09/1936