

REGISTER OF DEEDS  
Washtenaw County  
Book 21 57  
Day of AUGUST A.D. 1929  
9:30 A.M.  
125.8 PLATS or PAGES 38  
John F. ...  
Notary

Aug 20-1929  
J. S. ...  
Clerk

# WUERTH SUBDIVISION

A part of the SE 4 of Section 31 T2S

R6E, Washtenaw County Mich

Scale 1"=200'

### Dedication.

Know all men by these presents that we J. Fred Wuerth a married man as proprietor, Martha B Wuerth his wife, have caused the land embraced in the annexed plat, to be surveyed, laid out and platted to be known as, 'Wuerth Subdivision, and that streets as shown on above plat are hereby dedicated to the use of the public, a part of the SE 1/4 of Sec. 31, T2S, R6E, Washtenaw Co, Mich.

Signed and sealed in presence of  
J. Fred Wuerth (J.F.S.)  
Martha B. Wuerth (M.B.S.)

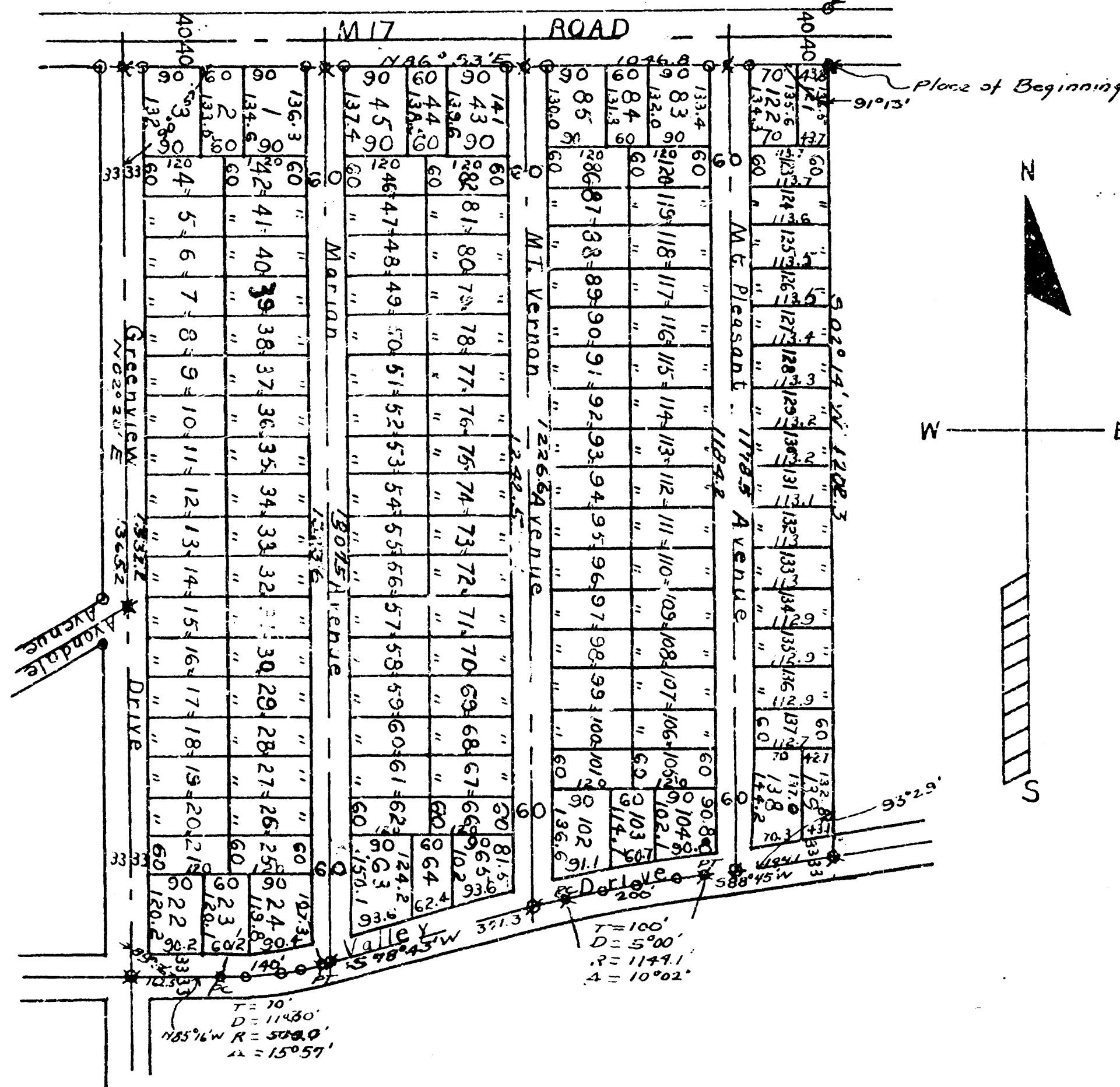
**Description**  
Beginning at a point 80 feet South of the 4 post between sections 31 and 32, T2S, R6E, Washtenaw County, Michigan, thence S32°14'W, 120.2 feet; thence S88°45'W, 194.1 feet; thence to the left on a 5 degree curve 200 feet; thence S78°43'W 371.3 feet; thence to right on a 113°06 degree curve 140 feet; thence N85°16'W 162.5 feet; thence S102°20'E, 1332.2 feet to the South side of M17; thence N86°53'E 1046.8 feet along said M17 Road to the place of beginning.

**Certificate of Municipal Approval.**  
This plat was approved by the township Board of the township of Ann Arbor at a meeting held June 20, 1929.  
John S. ...  
Clerk.

**Certificate of Approval by County Board**  
This plat was approved on the 24th day of June 1929.  
Judge of Probate  
County Clerk  
County Treasurer

**Certificate of Approval by the Board of County Auditors.**  
Approved by the Board of County Auditors of Washtenaw County, Mich., this day of 25th June 1929.

**Certificate as to State Trunk Line.**  
We here by certify that said plat appear to include land located on a State Trunk Line Road.  
County Plat Board  
Examined and approved 8/12/29  
Deputy State Highway Commissioner



State of Michigan  
County of Washtenaw  
On this 14th day of June 1929 before me a notary public in and for said county personally came the above named J. Fred Wuerth, and Martha B. Wuerth, his wife, known to me to be the persons who executed the above dedication and acknowledged the same to be their own free act and deed  
Erwin ...  
Notary Public, Washtenaw County, Mich.  
My Commission Expires July 14, 1930

**Surveyor's Certificate**  
I hereby certify that the plat hereon delineated is a correct one, and that permanent metal monuments of not less than one inch in diameter, and fifteen inches in length, set in concrete base, at least four inches in diameter, and forty eight inches in depth, have been placed at points marked as thereon shown, at all angles in the boundaries of the land platted, at all the intersections of the streets with the boundaries of the land platted, as shown on said plat.

George ...  
Registered Civil Engineer

**Treasurers Certificate**  
Office of County Treasurer Washtenaw County  
I hereby certify that there are no tax liens or titles held by the state on the lands described below, and that there are no tax liens or titles held by individuals on said lands for the five years preceding the 29th day of June 1929, and that the taxes for said period are all paid, as shown by the records of this office.  
A part of the S.E. 1/4 of Section 31, T2S, R6E, Washtenaw County, Mich.

Frank H. ...  
Co. Treas