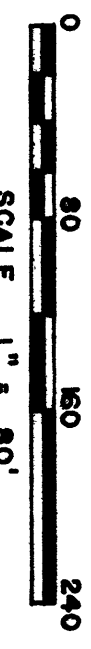


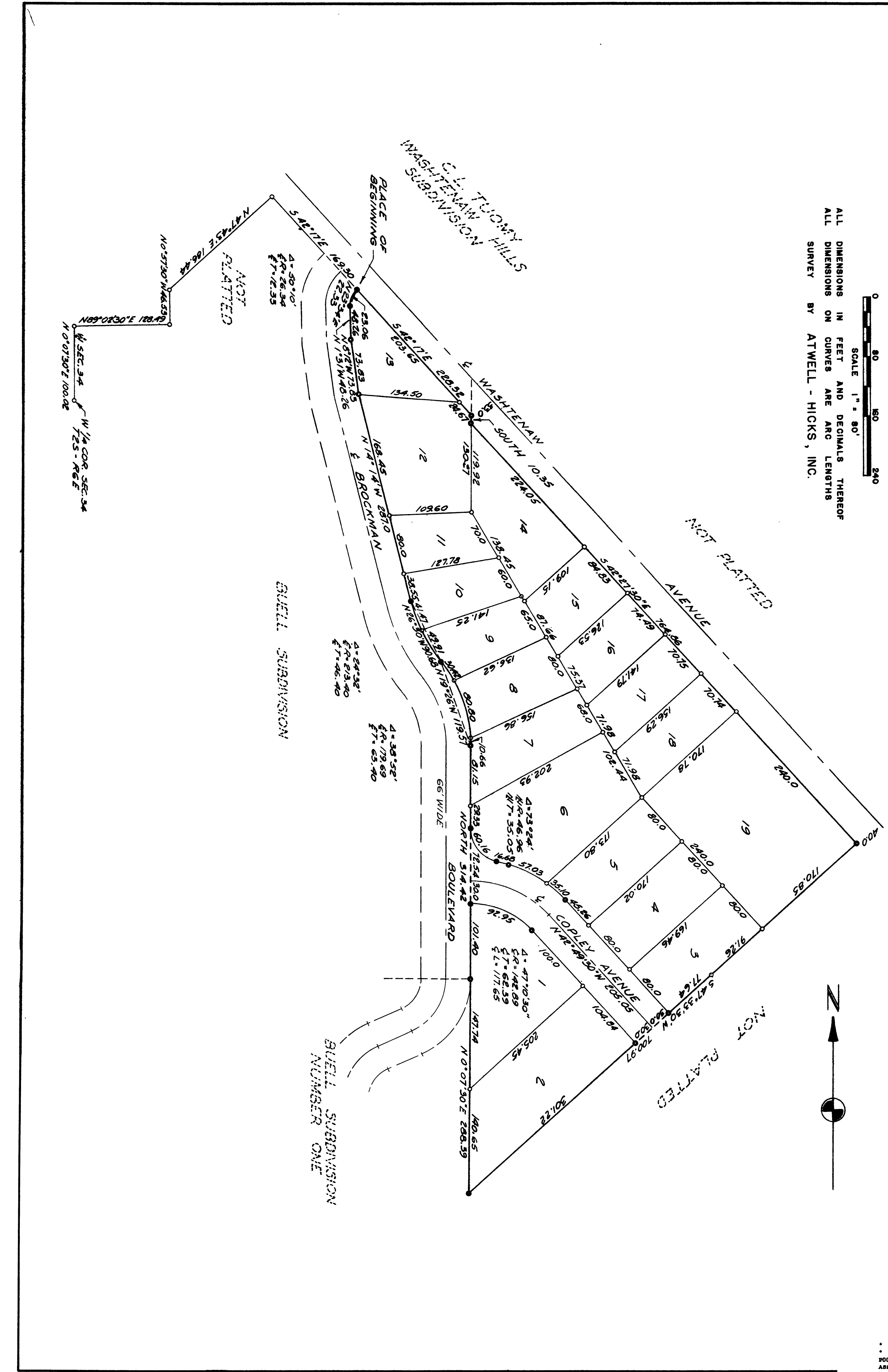
ASSESSOR'S PLAT No 40

PART OF THE SW 1/4 OF THE NW 1/4 AND PART OF THE NW 1/4 OF THE SW 1/4 OF SEC. 34, T 2 S - R 6 E, CITY OF ANN ARBOR, WASHINGTON COUNTY, MICHIGAN

ALL DIMENSIONS IN FEET AND DECIMALS THEREOF ALL DIMENSIONS ON CURVES ARE ARC LENGTHS SURVEY BY ATWELL - HICKS, INC.



SHEET 1 OF 2



ASSESSOR'S PLAT No 40

SHEET 2 OF 2

PART OF THE SW 1/4 OF THE NW 1/4 AND PART OF THE NW 1/4 OF THE SW 1/4 OF SEC. 34, T 2 S - R 6 E, CITY OF ANN ARBOR, WASHTENAW COUNTY, MICHIGAN



ALL DIMENSIONS IN FEET AND DECIMALS THEREOF ALL DIMENSIONS ON CURVES ARE ARC LENGTHS SURVEY BY ATWELL - HICKS, INC.

DEDICATION

KNOW ALL MEN BY THESE PRESENTS, That I, Curt H. Will Assessor of the City of Ann Arbor of Washtenaw County, State of Michigan, by virtue of authority in me vested by Section 51, Act 172, of 1929, having been duly authorized by the Common Council have caused the land described in the annexed plat to be surveyed, laid out and platted, to be known as ASSESSOR'S PLAT NO. 40 part of the SW 1/4 of the NW 1/4 and part of the NW 1/4 of the SW 1/4 of Sec. 34, T 2 S - R 6 E City of Ann Arbor, Washtenaw County, Michigan and that the avenue as shown on said plat is now being used for such purpose.

Dorothy Will (Witness) Lauren J. Jedele (Witness) Curt H. Will Assessor of the City of Ann Arbor

SURVEYOR'S CERTIFICATE

I hereby certify that the plat hereon delineated is a correct one and that permanent metal monuments consisting of bars not less than one-half inch in diameter and 36 inches in length, or shorter bars of not less than one-half inch in diameter lapped over each other at least 6 inches with an over-all length of not less than 36 inches, encased in a concrete cylinder at least 4 in. in diam. & 36 in. in depth have been placed at points marked thus (O) as thereon shown at all angles in the boundaries of the land platted, at all the intersections of streets, intersections of alleys, or of streets and alleys, and at the intersections of streets and alleys with the boundaries of the plat as shown on said plat.

Herbert S. Hicks Registered Land Surveyor and Professional Engineer # 1715

ACKNOWLEDGMENT

STATE OF MICHIGAN) County of Washtenaw) SS

On this 9th day of February, A.D. 1955, before me, a Notary Public in and for said county, personally came the above named Curt H. Will, Assessor of the City of Ann Arbor, known to me to be the person who executed the above dedication, and acknowledged the same to be his free act and deed as such.

Fred J. Looker Notary Public in and for Washtenaw County. My Commission expires May 7, 1956.

CERTIFICATE OF APPROVAL BY THE CITY PLANNING COMMISSION

This plat was approved by the Planning Commission of the City of Ann Arbor, Mich., at a meeting held on the 15 day of FEBRUARY, 1955

John E. Swisher, Jr. (Chairman) Sybil K. Bennett (Secretary)

MUNICIPAL APPROVAL

This plat was approved by the Common Council of the City of Ann Arbor at a meeting held February 24, 1955.

Fred J. Looker (Clerk)

MUNICIPAL APPROVAL

This plat was approved by the Board of Public Works of the City of Ann Arbor at a meeting held February 29, 1955.

Fred J. Looker (Clerk)

APPROVAL BY COUNTY PLAT BOARD

This plat was approved on the 25th day of March, 1955 by the Washtenaw County Plat Board

Patricia Newkirk Hardy (County Register of Deeds) J. Martin Rempp (Auditor) Adolph F. Gross (Auditor) Herbert G. Loeffler (Auditor)

Herby certify this copy is a true copy of map or plat forwarded the Register of Deeds for recording. Date April 5, 1955 Filed in Auditor's General's Dept. Date April 13, 1955 Examined and approved Date April 5, 1955

COPY Register's Office Washtenaw County. Plat of Assessor's Plat No 40 City of Ann Arbor was Recorded this 2th day of April, A.D., 1955 at 2 o'clock P.M. in Liber 12 of Plate on Page 43 & 44 Patricia Newkirk Hardy Register of Deeds ORIGINAL ON FILE

DESCRIPTION OF LAND PLATTED

The land embraced in the annexed plat of ASSESSOR'S PLAT NO. 40 part of the SW 1/4 of the NW 1/4 and part of the NW 1/4 of the SW 1/4 of Sec 34, T 2 S - R 6 E, City of Ann Arbor, Washtenaw County, Michigan is described as follows:

COMMENCING at the west 1/4 corner of Sec. 34, T 2 S R 6 E City of Ann Arbor Washtenaw County Michigan; thence along the west line of said section N 0°-07'-30" E 100.02 feet; thence N 89°-02'-30" E 128.49 feet; thence N 0°-57'-30" W 46.53 feet; thence S 42°-17' E 169.30 feet for a PLACE OF BEGINNING; thence continuing S 42°-17' E 228.32 feet; thence South 10.35 feet; thence S 42°-27'-30" E 764.86 feet; thence S 47°-33'-30" W 700.97 feet; thence N 0°-07'-30" E 288.39 feet; thence North 314.42 feet; thence in the arc of a circular curve concave to the west with a radius of 117.69 feet subtended by a chord which bears N 19°-26' W 119.57 feet; thence in the arc of a circular curve concave to the east with a radius of 213.40 feet subtended by a chord which bears N 26°-30' W 90.68 feet; thence N 14°-14' W 287.0 feet; thence N 8°-12' W 73.83 feet; thence N 1°-31' W 48.26 feet; thence in the arc of a circular curve concave to the southeast with a radius of 26.34 feet subtended by a chord which bears N 23°-34' E 22.33 feet to the place of beginning containing 19 lots numbered 1 to 19 inclusive.