

10-28-49

PITTSFIELD PARK NO. 1

PART OF THE EAST HALF OF SECTION 2

T.3S. - R.6E.

WASHTENAW COUNTY, MICHIGAN

PITTSFIELD TOWNSHIP

DEDICATION

KNOW ALL MEN BY THESE PRESENTS, That we Noble-Haab Corporation, a Michigan corporation, by Charles Noble, President, and Albert J. Parker, Secretary, as proprietor, have caused the land embraced in the annexed plat to be surveyed, laid out and platted to be known as Pittsfield Park No. 1, Section 2, Town 3 south, Range 6 east, Pittsfield Township, Washtenaw County, Michigan, and that the streets and alleys as shown on said plat are hereby dedicated to the use of the public.

Signed and Sealed in the Presence of
Charles Noble
Charles Noble, Pres.
Albert J. Parker
Albert J. Parker, Sec.
Eleanor Kilpatrick
Eleanor Kilpatrick

STATE OF MICHIGAN
COUNTY OF WASHTENAW ss
On this 12th day of October
A.D. 1949, before me Eleanor Kilpatrick, a Notary Public in and for said County, appeared Charles Noble and Albert J. Parker to me personally known who being each by me duly sworn did say that they are the President and Secretary respectively of the Noble-Haab Corporation, a Michigan corporation and that the seal affixed to said instrument is the corporate seal of said corporation and that said instrument was signed and sealed in behalf of said corporation by authority of its Board of Directors and the said Charles Noble and Albert J. Parker acknowledge said instrument to be the free act and deed of said corporation.

Eleanor Kilpatrick
Eleanor Kilpatrick
Notary Public Noble-Haab Corp.
My commission expires March 27, 1952

APPROVAL BY BOARD OF COUNTY AUDITORS
Approved by the Board of County Auditors of Washtenaw County, Michigan, this 20th day of October, 1949.
J. Martin Rempp Chairman
J. Martin Rempp
L. O. Cushing
L. O. Cushing
John E. Walz
John E. Walz

SCALE 1"=50'
100 FT.
NOTE: ALL DIMENSIONS ARE IN FEET AND DECIMALS THEREOF
DESCRIPTION

The land embraced in the annexed plat of Pittsfield Park No. 1, Section 2, Town 3 South Range 6 East, Pittsfield Township, Washtenaw County, Michigan is described as follows:

Commencing at the center post of said Section 2; thence N 0°13'58" W in the quarter line 294.77 feet for a point of beginning;

Thence continuing N 0°13'58" W in said quarter line 379.48 feet; thence south 76°49'58" E 646.0 feet; thence bearing right from a tangent which bears S 13°01'02" W along the arc of a circular curve having a radius of 307.60 feet and a central angle of 22°42'30" a distance of 120.28 feet to a point to which the long chord bears S 24°03'17" W 119.5 feet; thence S 35°52'32" W 102.15 feet; thence bearing left from a tangent which bears S 35°52'32" W along the arc of a circular curve having a radius of 880.37 feet and a central angle of 8°13' a distance of 126.25 feet to a point to which the long chord bears S 31°46'02" W 126.13 feet; thence N 81°03'13" W 456.00 feet to the point of beginning.

SURVEYOR'S CERTIFICATE

I hereby certify that the plat hereon delineated is a correct one and that permanent metal monuments consisting of bars not less than one-half inch in diameter and 48 inches in length, or shorter bars of not less than one-half inch in diameter lapped over each other at least 6 inches with an over-all length of not less than 48 inches, encased in a concrete cylinder at least 4 inches in diameter and 48 inches in depth have been placed at points marked thus (O) as thereon shown at all angles in the boundaries of the land platted, at all the intersections of streets, intersections of alleys, or of streets and alleys, and at the intersections of streets and alleys with the boundaries of the plat as shown on said plat. All dimensions are given in feet and decimals thereof.

Harry W. Goodwin
Harry W. Goodwin
Registered Land Surveyor #5434

APPROVAL BY COUNTY PLANNING COMMISSION
This plat was approved by the Planning Commission of Washtenaw County, Michigan at a meeting held August 26, 1949.
Earl H. Cross Chairman
Earl H. Cross
George D. Hurrell
George D. Hurrell
Kenneth Hallenbeck
Kenneth Hallenbeck

CO. TREASURER'S CERTIF. RELATING TO TAXES
(Sec. 135, Act 206, 1893 as amended - Sec. 4134, CL 1915)

Office of County Treasurer, Washtenaw County.
I hereby certify, that there are no tax liens or titles held by the State on the lands described hereon, and that there are no tax liens or titles held by individuals on said lands, for the five years preceding the 1st day of October, 1949 and that the taxes for said period of five years are paid, as shown by the records of this office.

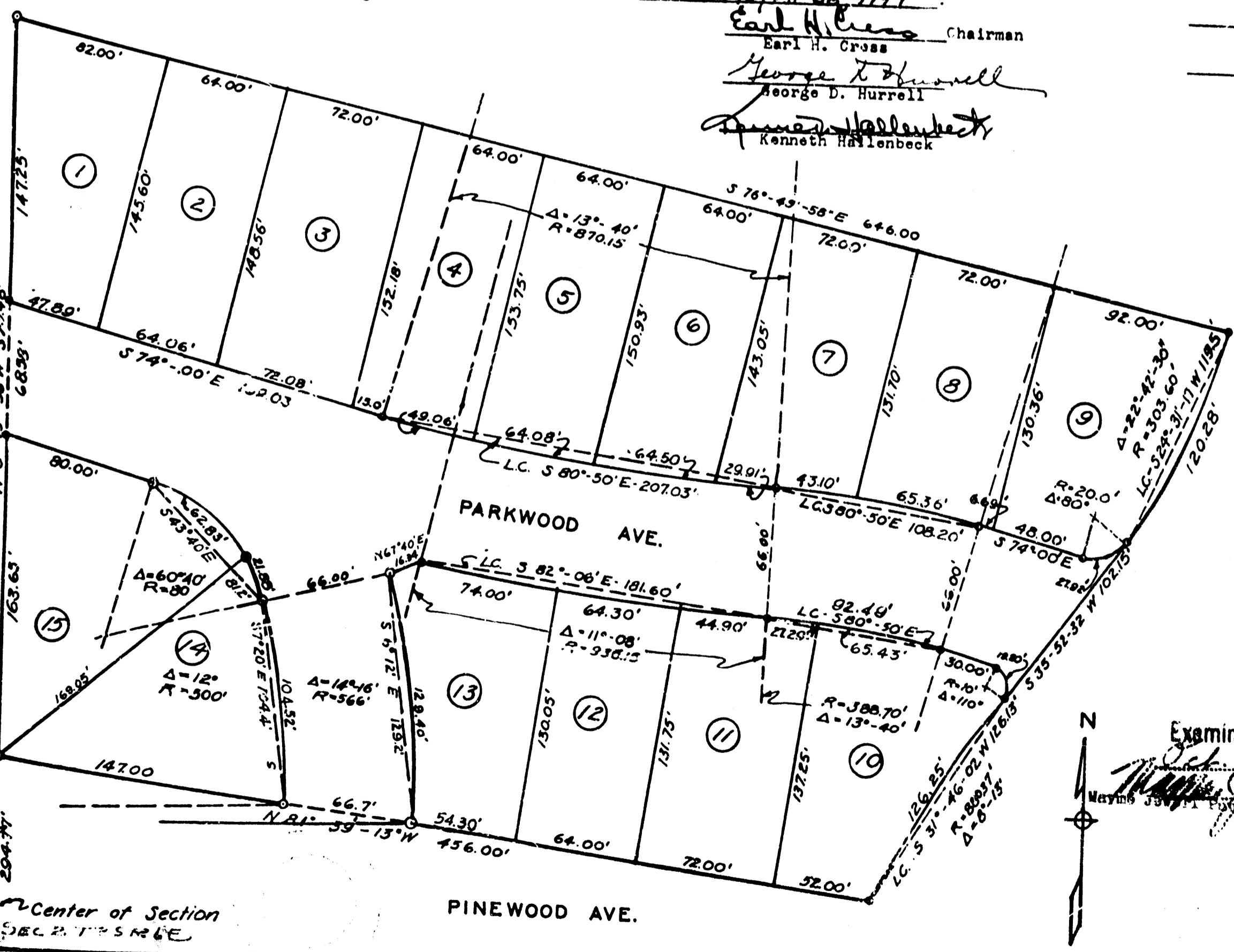
This certificate does not apply to taxes, if any, now in process of collection by Township, City or Village collecting officers.
W. F. Verner
W. F. Verner
County Treasurer

APPROVAL BY COUNTY ROAD COMMISSIONERS
This plat has been examined and was approved on the 11th day of October, 1949, by the Washtenaw County Board of Road Commissioners.

George Gill Chairman
George Gill
James C. Hendley
James C. Hendley
H. L. Frisinger
H. L. Frisinger

APPROVAL BY TOWNSHIP BOARD
This plat was approved by the Township Board of the Township of Pittsfield, Washtenaw County, Michigan at a meeting held Oct. 18, 1949.
Lambert H. Fleming Clerk
Lambert H. Fleming

APPROVAL AS TO STATE TRUNK LINE OR FEDERAL AID ROADS
We hereby certify that said plat appears to include land located on a state trunk line or federal aid road.
Board of County Auditors, by
J. Martin Rempp Chairman
J. Martin Rempp
L. O. Cushing
L. O. Cushing
John E. Walz
John E. Walz



Examined and Approved
Oct. 28, 1949
Maymie J. ...
Maymie J. ...
Deputy Auditor General

RECORDED FOR DEED IN THE
Washtenaw County
Recorder's Office
on the 1st day of November, A.D. 1949
at 1:35 o'clock P.M.
and recorded in Book 11 of PLATS
on page 3.
W. F. Verner
County Treasurer