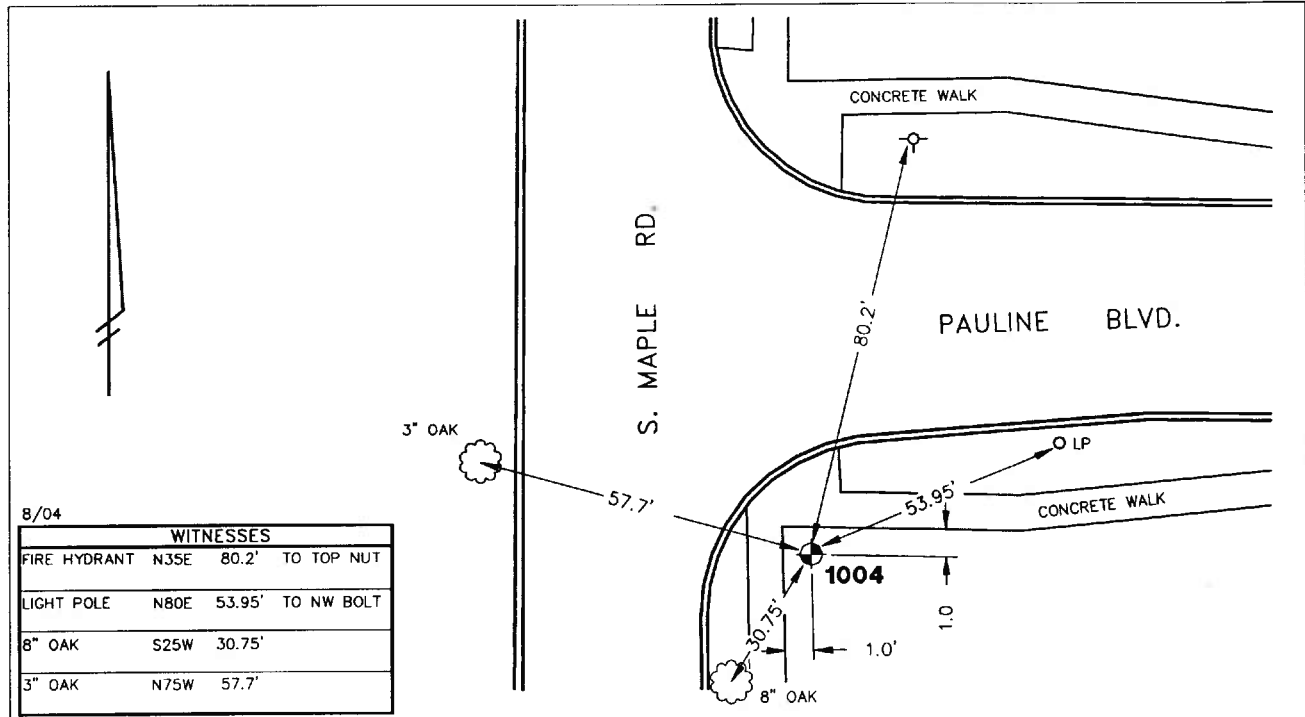


Public Services Area • Project Management Unit  
**CONTROL STATION DATA SHEET**

Approximate Location: Pauline Blvd. And S. Maple Rd.



8/04

WITNESSES			
FIRE HYDRANT	N35E	80.2'	TO TOP NUT
LIGHT POLE	N80E	53.95'	TO NW BOLT
8" OAK	S25W	30.75'	
3" OAK	N75W	57.7'	

STATION 1004 IS LOCATED AT THE SOUTHEAST CORNER OF SOUTH MAPLE ROAD AND PAULINE BOULEVARD, SAID STATION BEING IN THE NORTHWEST 1/4 OF SECTION 31, ANN ARBOR TOWNSHIP IN THE CITY OF ANN ARBOR, MICHIGAN. THE STATION IS LOCATED 1.0' EAST OF THE EAST EDGE OF THE 5.0' CONCRETE WALK ALONG THE EAST SIDE OF SOUTH MAPLE ROAD AND 1.0' SOUTH OF THE SOUTH EDGE OF THE 5.0' CONCRETE WALK ALONG THE SOUTH SIDE OF PAULINE BOULEVARD. SAID STATION IS A VERTICAL CONTROL STATION AND IS DESCRIBED AS THE 1993 EDITION OF THE CITY OF ANN ARBOR BRASS DISC, SET IN CONCRETE PER DETAIL II AND IS FLUSH WITH THE GROUND. THIS STATION WAS SET BY THE CITY OF ANN ARBOR IN 1993.

**Benchmark**

**Vertical**

Accuracy	2nd Order Class II
Datum	NAVD 88
Elevation in meters	297.538
Elevation in International feet	976.17

No. 1004  
 Sector: WC