

II. QUESTIONS AND ANSWERS

The following Questions have been received by the City. Responses are being provided in accordance with the terms of the RFP. Respondents are directed to take note in its review of the documents of the following questions and City responses as they affect work or details in other areas not specifically referenced here.

Question 1: On Sheet 14 of 20, SITE DETAILS SHEET, both asphalt details call for "12" MDOT Class II Granular subbase compacted to 95% maximum unit weight, paid for as Subbase, CIP, 12 inch". Is this material necessary in this pavement section? There is also no "Subbase, CIP, 12 inch" pay item. Just asking for clarification on the asphalt pavement section.

Answer 1: Payment for Subbase, CIP 12 inch is not expected. Existing subbase material appears to be sufficient based on the soil borings.

Question 2: Under specification Section 01 25 00 Materials and Equipment, 2.01D - The Pilot Rock grill doesn't fully match up, the model number provided doesn't exist and the model that seems close doesn't come in black. Clarification on the exact grill desired would be helpful.

Answer 2: The grill as specified is found at this location <https://www.pilotrock.com/series/charcoal-grills/asw-24-series-accessible-grills/>. The grill should be black.

Question 3: Under specification Section 01 25 00 Materials and Equipment, 2.01D - 2.01G - Dock System - What is this exactly and where is it for?

Answer 3: The dock system, as defined in the specification, is for the three items labeled "Boat Dock" on sheet 7.

Question 4: Can temporary site utilities be used during construction?

Answer 4: No there aren't any temporary site utilities on site. The electric line comes in to the restroom first and then goes to the Livery building, so when the restrooms are shut down, the livery power will be off as well.

Question 5: Will there be any items that the owner will furnish for the contractor to install?

Answer 5: The owner will provide the "Kayak Launch" and the plate connecting it to the dock for the contractor to install on the accessible kayak dock. The "accessible dock" and "EZ kayak launch" will be provided and installed by the contractor.

Question 6: The existing air compressors on site are not shown on the drawings. What will happen to them?

Answer 6: The owner will remove the two existing air compressors and the concrete pads associated with them prior to construction.

Question 7: Are there any permits required other than the building permit?

Answer 7: Please see specification **SECTION 01 41 26 PERMIT REQUIREMENTS** which lists the required permits for the project.

Question 8: Bid form BF-9 Question 9 mentioned about what percentage of the work force resides in the City of Ann Arbor & what percentage resides in Washtenaw County. Please provide if this will be required for this project.

Answer 8: Contractors are encouraged to make good faith efforts to employ local persons.

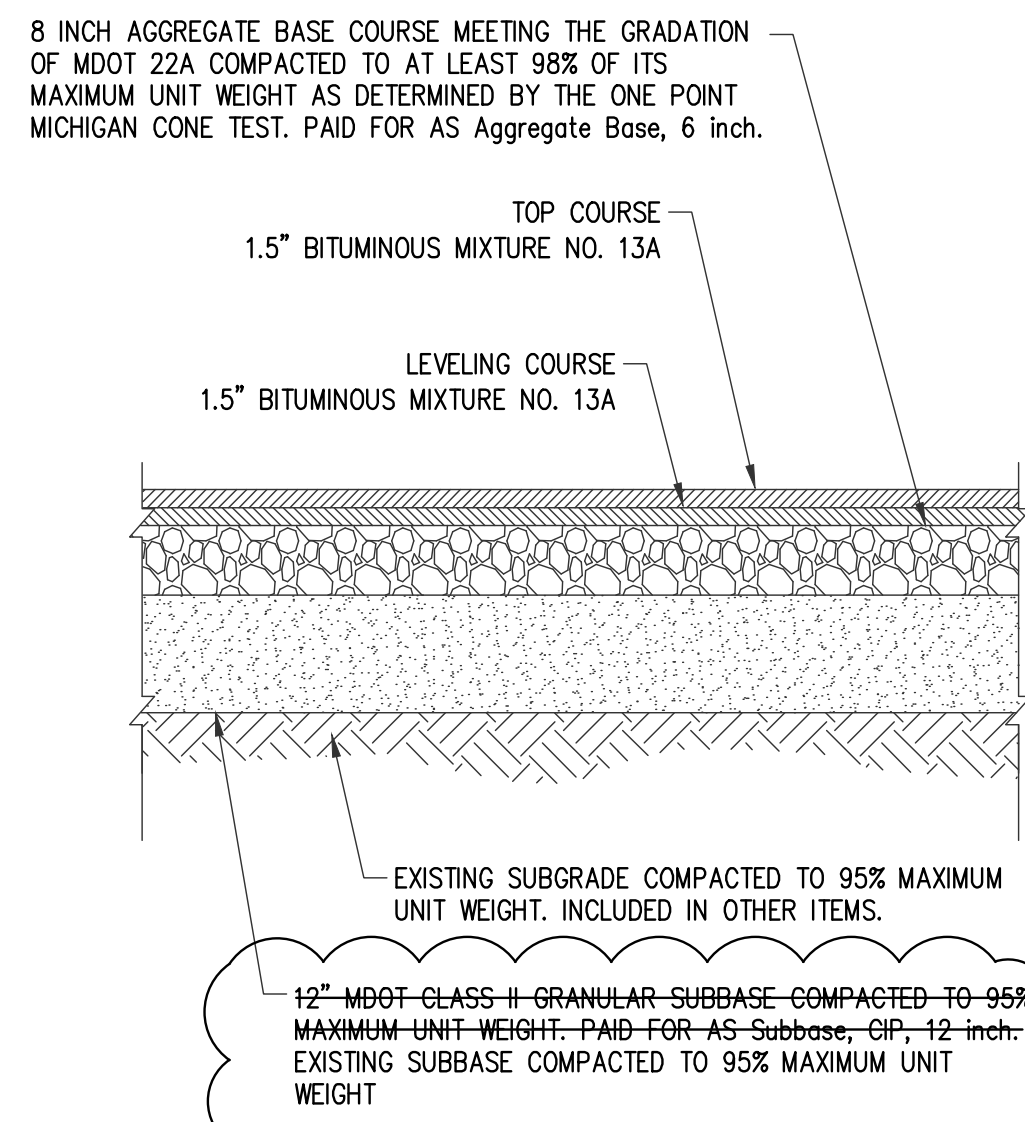
Question 9: Is there any site office requirement?

Answer 9: No, there is not a requirement to have an office on site.

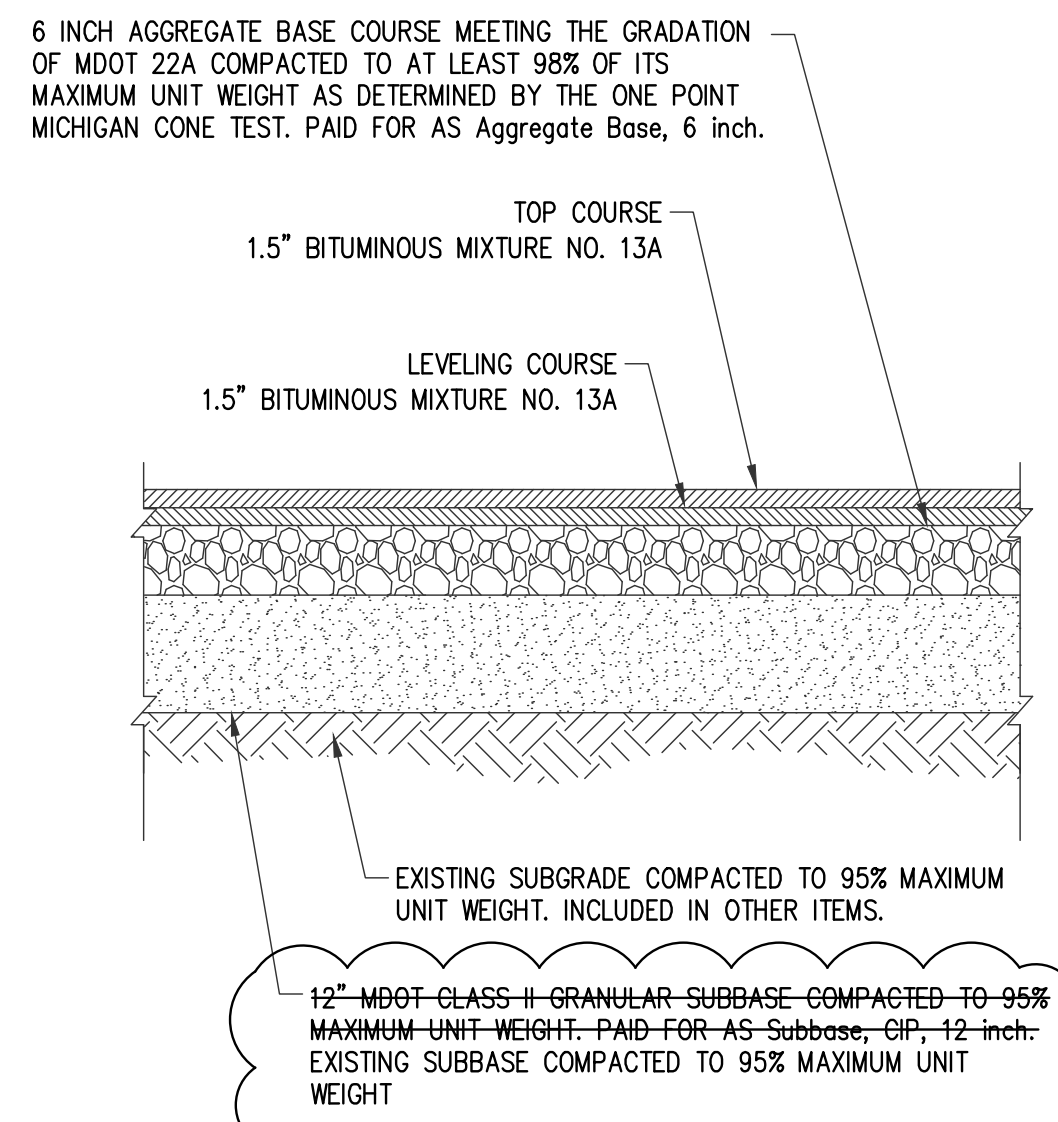
Question 10: Please provide the value projected for this project.

Answer 10: The value of this project is estimated to be in the range of approximately \$500,000 - \$600,000.

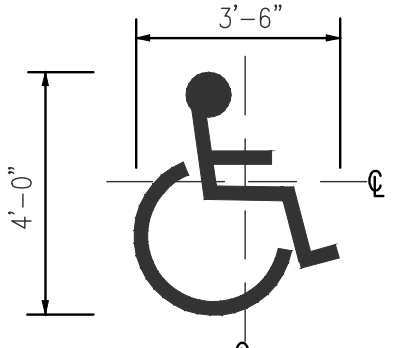
Offerors are responsible for any conclusions that they may draw from the information contained in the Addendum.



ASPHALT IN ROW - SECTION
NOT TO SCALE

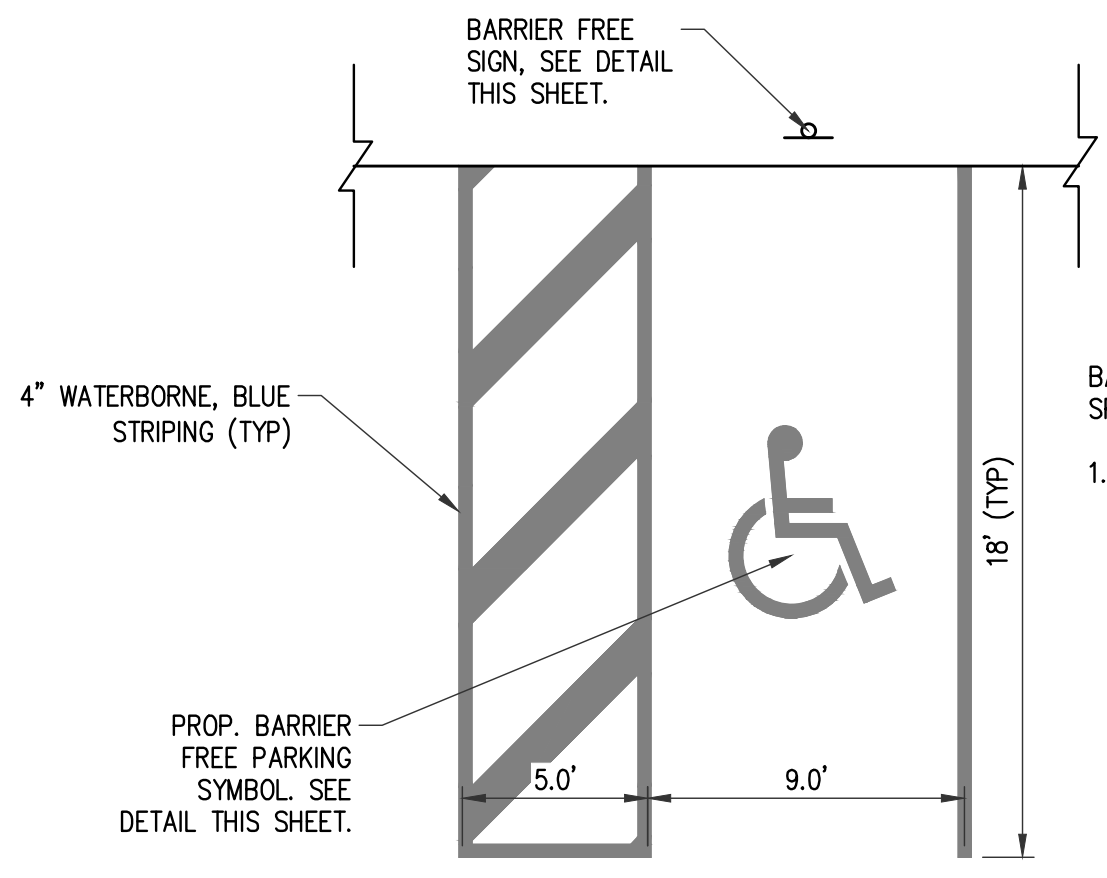


ASPHALT PARKING - SECTION
NOT TO SCALE

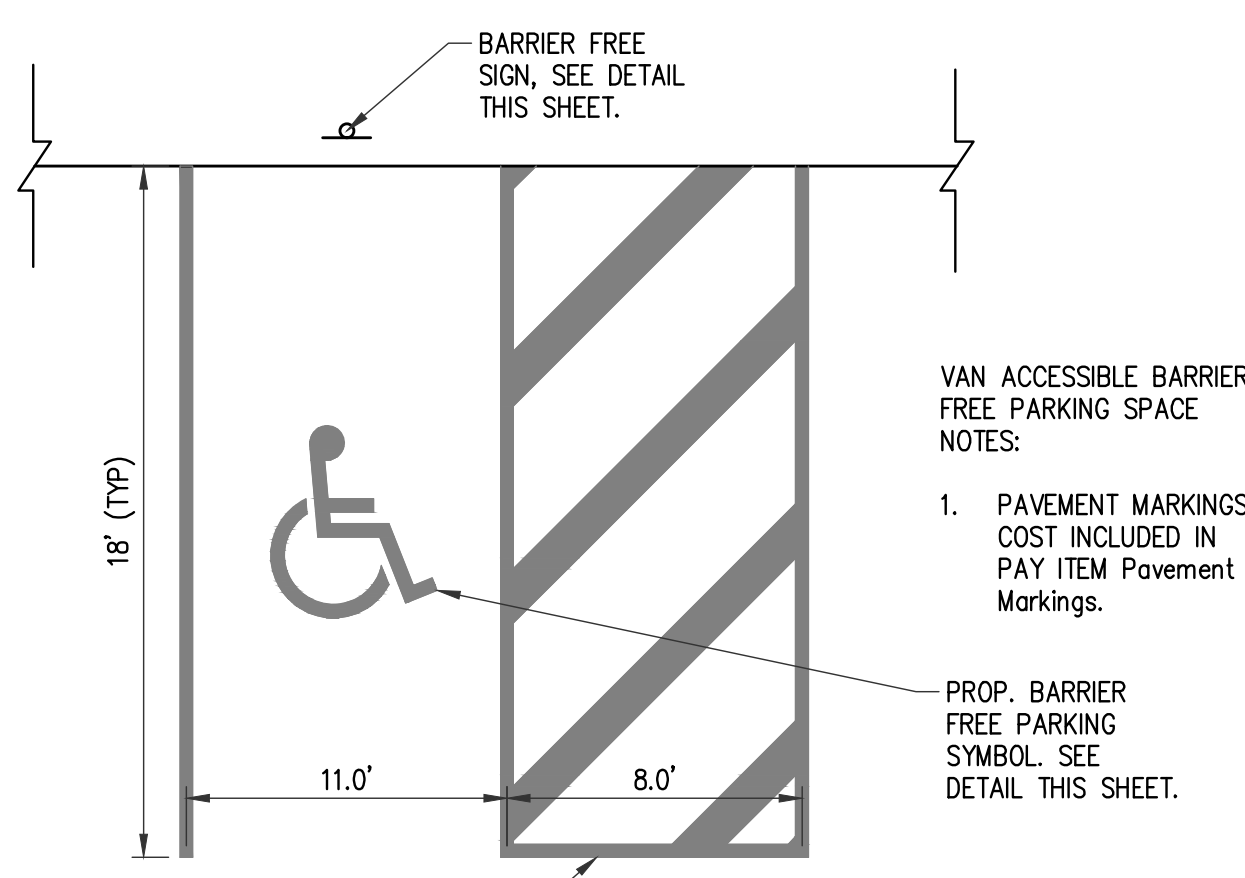


- BARRIER FREE PARKING SYMBOL NOTES:**
1. SYMBOL SHALL BE APPLIED AT A WIDTH OF 4"
 2. MATERIAL SHALL BE BLUE WATERBORNE
 3. CENTERLINE OF SYMBOL SHALL BE PARALLEL TO PARKING STALL STRIPE AND IN CENTER OF STALL.
 4. PAVEMENT MARKING SYMBOL COST INCLUDED IN PAY ITEM Pavement Markings.

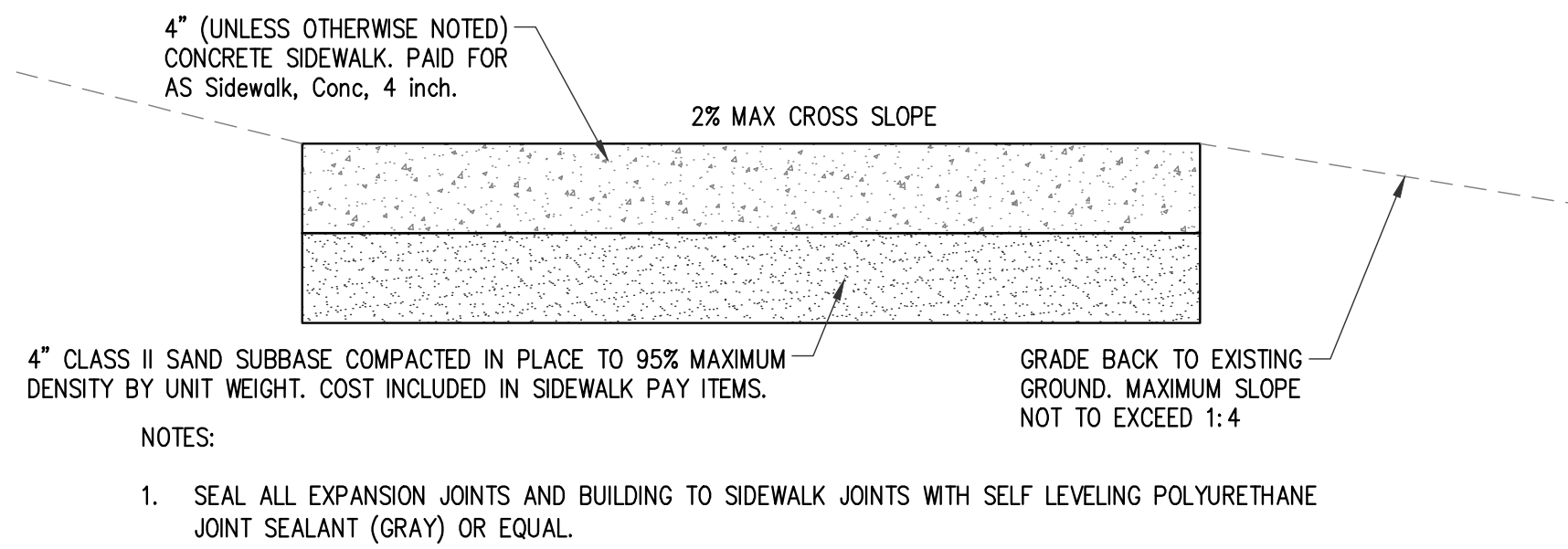
BARRIER FREE SYMBOL
NOT TO SCALE



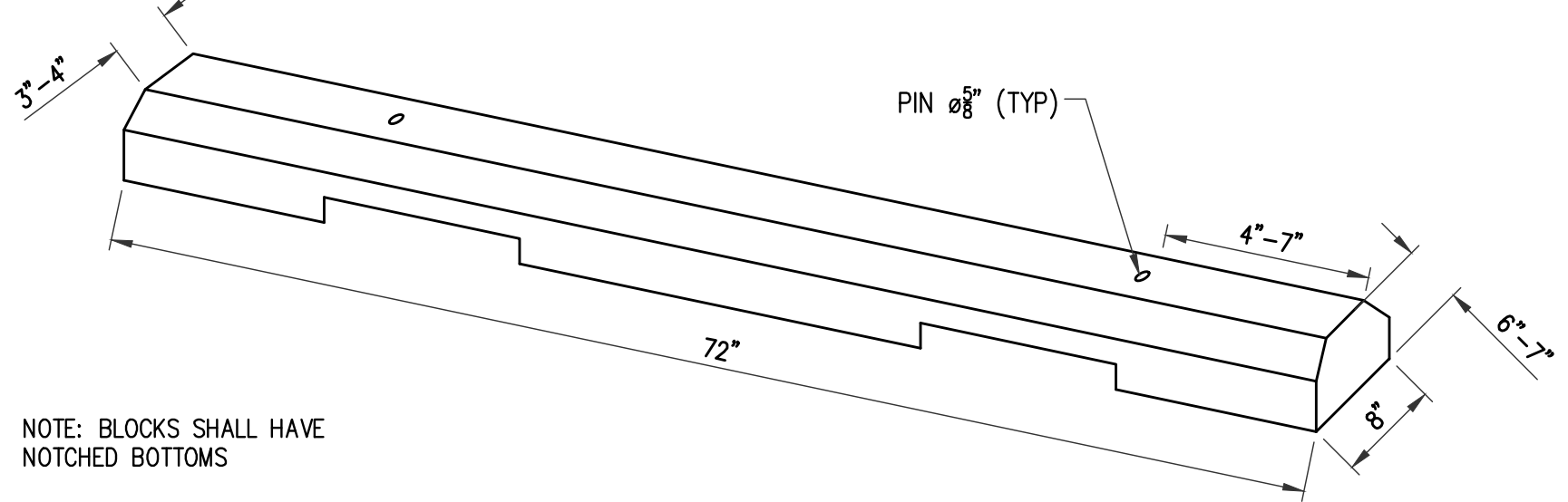
BARRIER FREE PARKING SPACE
NOT TO SCALE



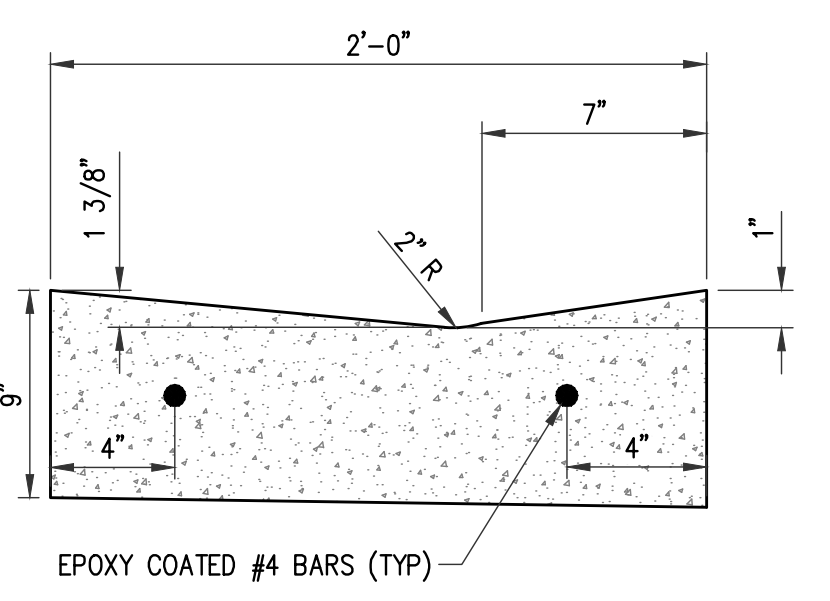
VAN ACCESSIBLE BARRIER FREE PARKING SPACE
NOT TO SCALE



CONCRETE SIDEWALK - SECTION
NOT TO SCALE



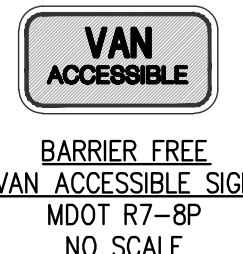
CONCRETE BUMPER BLOCK
NOT TO SCALE



VALLEY CURB DETAIL
NOT TO SCALE



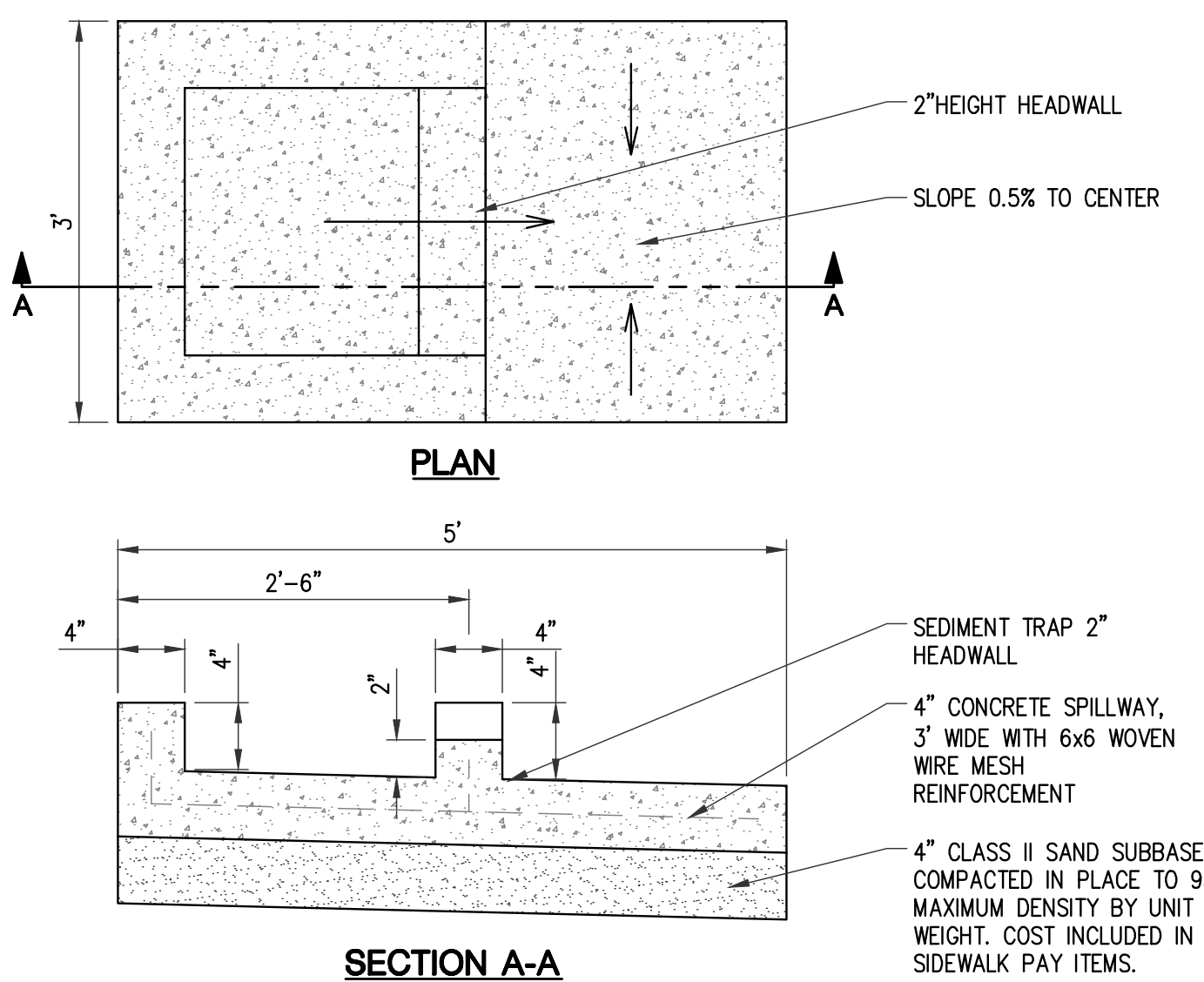
BARRIER FREE SIGN
MDOT R7-8
NO SCALE



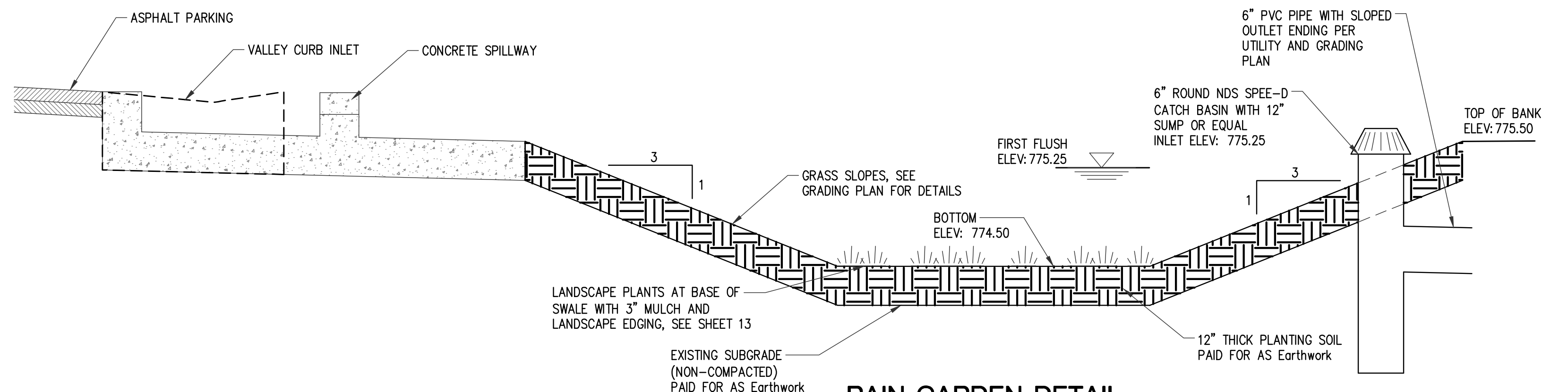
BARRIER FREE VAN ACCESSIBLE SIGN
MDOT R7-8P
NO SCALE

- BARRIER FREE PARKING SIGNAGE NOTES:**
1. ALL SIGNS SHALL BE PROVIDED AND INSTALLED ACCORDING TO THE MICHIGAN MANUAL OF UNIFORM TRAFFIC CONTROL DEVICES, LATEST EDITION.
 2. ALL BARRIER FREE PARKING SIGNS SHALL ON 3LB STEEL POST.
 3. SIGNS COST INCLUDED IN PAY ITEM Permanent Traffic Signs.

BARRIER FREE SIGN
NOT TO SCALE



CONCRETE SPILLWAY DETAIL
NOT TO SCALE



RAIN GARDEN DETAIL
NOT TO SCALE



PLAN SUBMITTALS AND CHANGES

BIDDING DOCUMENTS

DATE	DESCRIPTION
1-15-21	ISSUED FOR BIDS
3-17-21	ADDENDUM 3

PLAN DATE: JANUARY 2021
PROJECT MGR: DRS
REVIEWER: AW
SCALE: NOT TO SCALE

ROWE PROFESSIONAL SERVICES COMPANY

C: (810) 341-7500
F: (810) 341-7573
www.rowepsc.com

The Rowe Building
540 S. Saginaw St., Suite 200
Flint, MI 48502

PREPARED FOR
CITY OF ANN ARBOR PARKS & REC
ARGO PARK LIVERY

SITE DETAILS SHEET

REV: _____

SHT# 14 OF 20
JOB No: 20C0027

R:\Projects\200027\Org\Construction Drawings\01-20C0027-DET.dwg PLOTED: 3/16/2021 8:11 PM

SECTION 01 25 00
MATERIALS AND EQUIPMENT

PART 1 - GENERAL

1.01 Work Included

Unless specifically indicated otherwise on the plans or in the contract documents, all materials and equipment shall be new and undamaged.

A. Materials and Equipment

1. Materials and equipment incorporated into the work shall conform to applicable specifications and standards. Materials and equipment shall comply with size, make, type, and quality specified or as specifically approved by the Engineer.
2. Manufactured and fabricated products shall be designed, fabricated, and assembled in accordance with the best engineering and shop practices. Like parts of duplicate units are to be manufactured to standard sizes and gauges to be interchangeable. Two or more items of the same kind shall be identical and manufactured by the same manufacturer. Products shall be suitable for the service conditions. Equipment capacities, sizes, and dimensions shown or specified shall be adhered to unless variations are specifically approved in writing. Materials or equipment shall not be used for any purpose other than that for which it is designed or specified.

1.02 Substitutions

- A. Where specific materials and equipment items are identified in the specifications by manufacturer's name or model number, bids shall be based on the products of one of the manufacturers so named or added thereto by addendum during the bidding period.
- B. During the bidding period, all requests for substitutions will be given full consideration by the Engineer; and if approved, an addendum will be issued to incorporate the approved material or equipment into the contract documents.
- C. Requests for substitutions must be received by the Engineer in ample time, not later than ten days before the bid due date, so that any necessary addendum will be received by all prospective bidders before submission of the bids.
- D. After award of the contract, requests for substitutions will be considered only for one of the following reasons:
 1. Increased value to the Owner
 2. Decreased cost to the Owner
 3. Specified items not procurable
- E. Requests for substitutions after award of the contract shall be accompanied by manufacturer's data or other detailed descriptions of the proposed material or equipment.
- F. A request for a substitution constitutes a representation that the Contractor has investigated and determined the proposed product is equal to or superior in all respects to that specified.

- G. The Contractor shall coordinate the installation of an accepted substitution into the project to provide a complete and operable system. Modifications or re-work of other parts of the project resulting because of substitutes will be at the Contractor's expense.
- H. The Engineer shall be the judge of the acceptability of the proposed substitutions.

1.03 Manufacturer's Instructions

- A. When contract documents require that installation of work shall comply with the manufacturer's printed instructions, the Contractor shall obtain and distribute copies of such instructions to the parties involved in the installation, including two sets to the Engineer. The instructions shall be provided in advance of installation. The Contractor shall notify the Engineer in the event job conditions or the requirements of the plans or specifications conflict with the manufacturer's instructions.
- B. The Contractor shall handle, install, connect, clean, condition, and adjust products in accordance with such instructions and in conformity with the specified requirements.
- C. The Contractor shall perform work in accordance with manufacturer's instructions. No preparatory step or installation procedures shall be omitted unless specifically modified or exempted by contract documents.

PART 2 - PRODUCTS

2.01 Items

- A. Michigan Department of Natural Resources (MDNR) recognition plaque to be mounted on the exterior of the restroom building as directed by the Owner (provided by MDNR/Owner). This will be an incidental item, included in other pay items.
- B. Recycle Bin, 42-gallon HDPE receptacle with lid, NOR-ENO1057 as manufactured by Norwood (800-260-2776) or approved equal.
- C. Pedestal Table, Steel frame, single post, 3-seat accessible table, surface mounted with IPE wood surface, model #76-33 as manufactured by DuMor or approved equal (810-229-6245). Standard colors are to be determined by the Owner.
- D. Grill, accessible, Black, Steel , embedment mounted, model #ASW-24 B2 as manufactured by Pilot Rock or approved equal (800-762-5002). <https://www.pilotrock.com/series/charcoal-grills/asw-24-series-accessible-grills/>.
- E. Bench, 57, 6' cast bench, wood grain recycled plastic in Brazillian Walnut slats and bronze powdercoat.as manufactured by DuMor or approved equal (810-229-6245).
- F. Kayak launch shall be an accessible EZ Launch as manufactured by EZ, Dock, OIM as specified on the attached drawing or approved equal. It shall be installed per manufacturer recommendations and as indicated on the construction plans and details. An informational sign shall be included regarding use of the launch. A maintenance and operation manual will be provided as well as instruction on seasonal removal and installation (517-294-7476). The owner will provide the "Kayak Launch" and the plate connecting it to the dock for the contractor to install on the accessible kayak dock. The "accessible dock" and "EZ kayak launch" will be provided and installed by the contractorDock System, Provide and install three each "Boat Dock", 8- by 24-foot dock with lap welded marine grade aluminum understructure, 100 percent virgin vinyl decking, internal telescoping leg assembly, vinyl fender trim, model #500 as manufactured by Instant Marine (248-398-1011) or approved equal.

- G. Ledge Stone, Michigan limestone ledge rock, 8 inch to 10 inch thick, 3 feet to 6' length, 24 inch to 30 inch depth, approximately 10 face feet per ton.
- I Beach Aggregate, natural rounded aggregate, 1/8" to 3/4" screened and washed placed at 2 inch depth.
- H. Bike Bollard, Model 199, Black, surface mount by DuMor or approved equal (810-229-6245).

PART 3 - EXECUTION

3.01 Transportation and Handling

- A. The Contractor shall arrange deliveries of products in accordance with construction schedules and coordinate them to avoid conflict with work and conditions at the site.
 - 1. Products shall be delivered in undamaged condition, in the manufacturer's original containers or packaging with identifying labels intact and legible.
 - 2. Immediately upon delivery, the Contractor shall inspect shipments to assure compliance with requirements of contract documents and approved submittals and that products are properly protected and undamaged.
- B. The Contractor shall provide equipment and personnel to handle products by methods to prevent soiling or damage to products or packaging.

3.02 Storage and Protection

- A. Products shall be stored in accordance with the manufacturer's instructions, with seals and labels intact and legible.
 - 1. Products subject to damage by the elements shall be stored in weather tight enclosures.
 - 2. Temperature and humidity shall be maintained within the ranges required by manufacturer's instructions.
- B. The Contractor shall arrange storage in a manner to provide easy access for inspection and make periodic inspections to assure that products are maintained under specified conditions and free from damage or deterioration.
- C. For products specified by naming one or more products or manufacturers and "or equal", the Contractor must submit a request for substitutions for any product or manufacturer not specifically named.

PART 4 - MEASUREMENT AND PAYMENT

The work of materials and equipment will be paid for at the contract unit price for the following pay item(s).

<u>Pay Item</u>	<u>Pay Unit</u>
Recycle Bin	Each
Pedestal Table	Each
Grill	Each

Bench	Each
Kayak Launch	Lump Sum
Boat Dock	Each
Ledge Stone	Ton
Beach Aggregate	Syd
Bike Bollard	Each

The work for Recycle Bin includes provision, storage, and installation of recycle bin.

The work for Pedestal Table includes provision, storage, and installation of pedestal table including epoxy anchor bolts for surface mount installation.

The work for Grill includes provision, storage, and installation of grill including concrete footing.

The work for Bench includes provision, storage, and installation of bench including epoxy anchor bolts for surface mount installation.

The work for Kayak Launch includes provision, storage, and installation of kayak launch necessary for fully operational system. Includes provision of operation and maintenance manual (1 hard copy and 1 pdf), installation, and winterization visit with the Owner.

The work for Boat Dock includes provision, storage, and installation of boat dock necessary for fully operational system. Includes provision of operation and maintenance manual (1 hard copy and 1 pdf), installation, and winterization visit with the Owner.

The work for Ledge Stone includes provision, shipping, site preparation and installation of ledge stone per plans and details.

The work for Beach Aggregate includes provision, shipping, site preparation and installation of beach aggregate per plans and details.

The work for Bike Bollard includes provision, storage, and installation of bike bollards including epoxy anchor bolts for surface mount installation

END OF SECTION

