

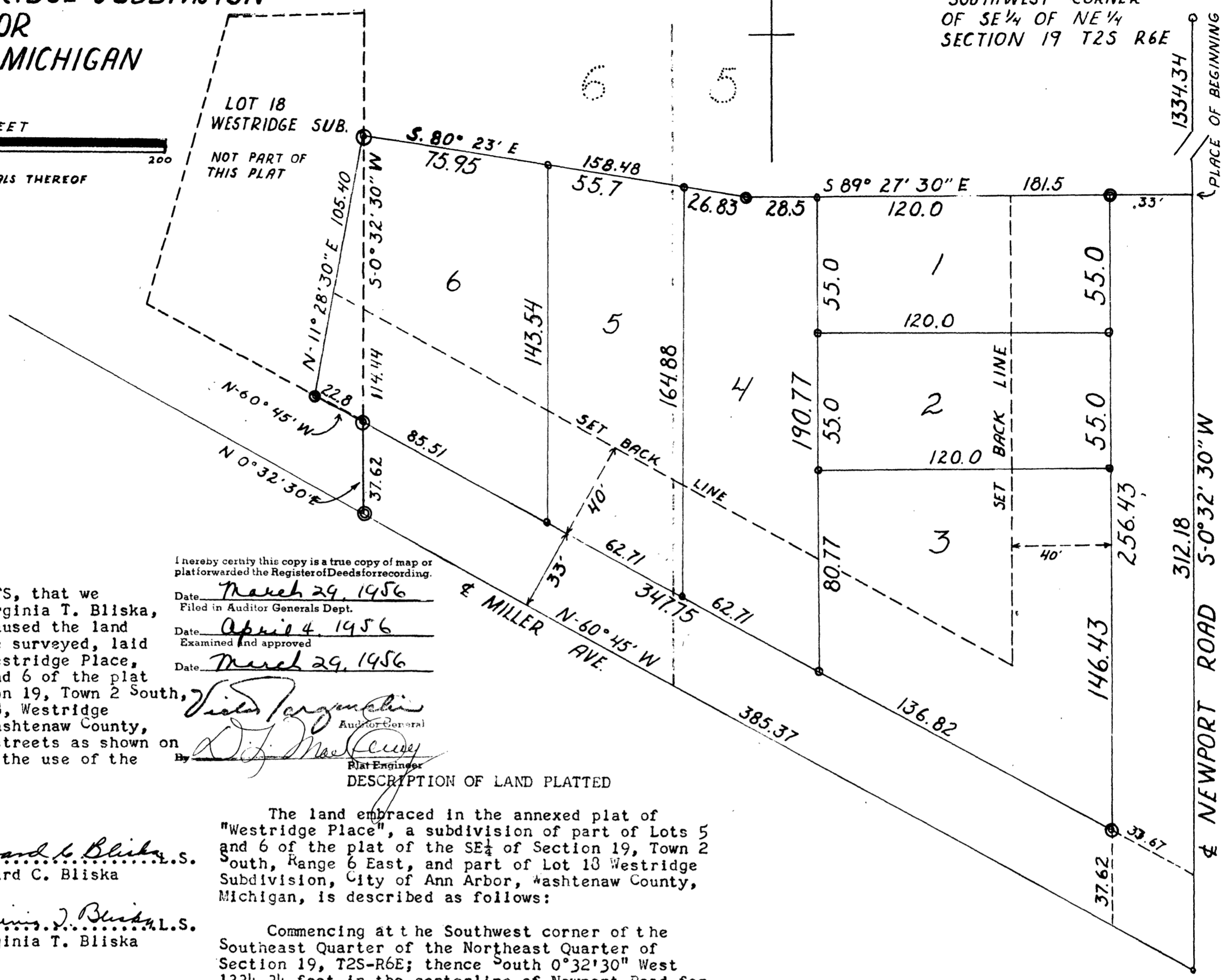
WESTRIDGE PLACE

A SUBDIVISION OF PART OF
 LOTS 5 & 6 OF THE PLAT OF THE SE 1/4 OF
 SECTION 19, TOWN 2 SOUTH, RANGE 6 EAST
 AND PART OF LOT 18 WESTRIDGE SUBDIVISION
 CITY OF ANN ARBOR
 WASHTENAW COUNTY, MICHIGAN

SCALE: ONE INCH = FORTY FEET

NOTE: ALL DIMENSIONS ARE IN FEET AND DECIMALS THEREOF

COPY
 Recorder's Office
 Washtenaw County
 Plat of Westridge Place
 City of Ann Arbor
 was Recorded this 2nd day of
April, A.D., 1956 at 11 o'clock
 A.M. in Liber 13 of Plats
 on Page 34
Patricia Newkirk Hardy
 C. M. SEVER, Register of Deeds
 ORIGINAL ON FILE



DEDICATION

KNOW ALL MEN BY THESE PRESENTS, that we Edward C. Bliska, husband, and Virginia T. Bliska, his wife, as proprietors, have caused the land embraced in the annexed plat to be surveyed, laid out, and platted to be known as Westridge Place, a subdivision of part of lots 5 and 6 of the plat of the Southeast Quarter of Section 19, Town 2 South, Range 6 East, and a part of Lot 18, Westridge Subdivision, City of Ann Arbor, Washtenaw County, Michigan, and that the roads and streets as shown on said plat are hereby dedicated to the use of the Public.

I hereby certify this copy is a true copy of map or plat forwarded the Register of Deeds for recording.

Date March 29, 1956
 Filed in Auditor General's Dept.
 Date April 4, 1956
 Examined and approved
 Date March 29, 1956

Viola J. Argentin
 Auditor General
W. J. McCreary
 Plat Engineer

DESCRIPTION OF LAND PLATTED

The land embraced in the annexed plat of "Westridge Place", a subdivision of part of Lots 5 and 6 of the plat of the SE 1/4 of Section 19, Town 2 South, Range 6 East, and part of Lot 18 Westridge Subdivision, City of Ann Arbor, Washtenaw County, Michigan, is described as follows:

Commencing at the Southwest corner of the Southeast Quarter of the Northeast Quarter of Section 19, T2S-R6E; thence South 0°32'30" West 1334.34 feet in the centerline of Newport Road for a place of beginning. Thence South 0°32'30" West 312.18 feet in the centerline of Newport Road; thence North 60°45' West 385.37 feet in the centerline of Miller Avenue; thence North 0°32'30" East 37.62 feet; thence North 60°45' West 22.8 feet; thence North 11°28'30" East 105.4 feet; thence South 80°23' East 158.48 feet; thence South 89°27'30" East 181.5 feet to the place of beginning.

CERTIFICATE OF APPROVAL BY THE CITY PLANNING COMMISSION

This plat was approved by the Planning Commission of the City of Ann Arbor, Michigan, at a meeting held on the 31 day of JANUARY, 1956.

John E. Swisher, Jr. (Chairman)
Sybil K. Bennett (Secretary)

MUNICIPAL APPROVAL

This plat was approved by the Common Council of the City of Ann Arbor at a meeting held February 20, 1956.

Fred J. Looker (Clerk)

MUNICIPAL APPROVAL

This plat was approved by the Board of Public Works of the City of Ann Arbor at a meeting held February 9, 1956.

Fred J. Looker (Clerk)

ATTORNEY'S OPINION

I hereby certify from an examination of abstract of title to the lands described in this plat that I find no outstanding interest, including mineral rights, other than in the parties joining in the dedication.

Date January 27, 1956 Charles C. Menefee
 Charles C. Menefee (Attorney)

COUNTY TREASURER'S CERTIFICATE

Office of County Treasurer, Washtenaw County. I hereby certify, that there are no tax liens or titles held by the State on the lands described hereon, and that there are no tax liens or titles held by individuals on said lands for the five years preceding the 27th day of January, 1956 and that the taxes for said period of five years are all paid, as shown by the records of this office. This certificate does not apply to taxes, if any, now in process of collection by township, city or village collecting officers.

W. F. Verner (County Treasurer)

APPROVAL BY COUNTY PLAT BOARD

This plat was approved on the 8th day of March, 1956 by the Washtenaw County Plat Board.

Patricia Newkirk Hardy (County Register of Deeds)
J. Martin Remp (Auditor)
Adolph F. Gross (Auditor)
Herbert G. Loeffler (Auditor)

APPROVAL BY BOARD OF COUNTY ROAD COMMISSIONERS

This plat has been examined and was approved on the 27th day of January, 1956 by the Washtenaw County Board of Road Commissioners.

James C. Hendley (Chairman)
Raymond L. Koch (Member)
H. L. Frisinger (Member)

ACKNOWLEDGMENT

STATE OF MICHIGAN)
 County of Washtenaw) SS

On this 30th day of January, A.D. 1956, before me, a Notary Public in and for said County, personally appeared the above named Edward C. Bliska and Virginia T. Bliska known to me to be the persons who executed the above dedication, and acknowledged the same to be their free act and deed.

GEO. J. GEISEL (Notary Public)

Notary Public in and for Washtenaw County
 My commission expires Dec 2-1956

SURVEYOR'S CERTIFICATE

I hereby certify that the plat hereon delineated is a correct one, and that permanent monuments consisting of iron rods at least one half inch in diameter and 36 inches in length, encased in concrete cylinders four inches in diameter and 36 inches in length, have been set at points marked thus (⊙) as thereon shown at all angles in the boundaries of the land platted, at all intersections of the lines of streets and at intersections of the lines of streets with the boundaries of the plat.

Alton D. Simms
 Alton D. Simms

Registered Land Surveyor
 Registered Professional Engineer
 No. 5494

CITY CLERK'S CERTIFICATE

Office of City Clerk, City of Ann Arbor I hereby certify that the width and depth of lots shown on this plat are in compliance with rules and regulations of the City of Ann Arbor and the requirements as to width and depth of Sec. 30 of Act 172, Public Acts of 1929 as amended by Act 186 Public Acts of 1954, and that water and sewer installations are ready for connection.

Fred J. Looker (Clerk)