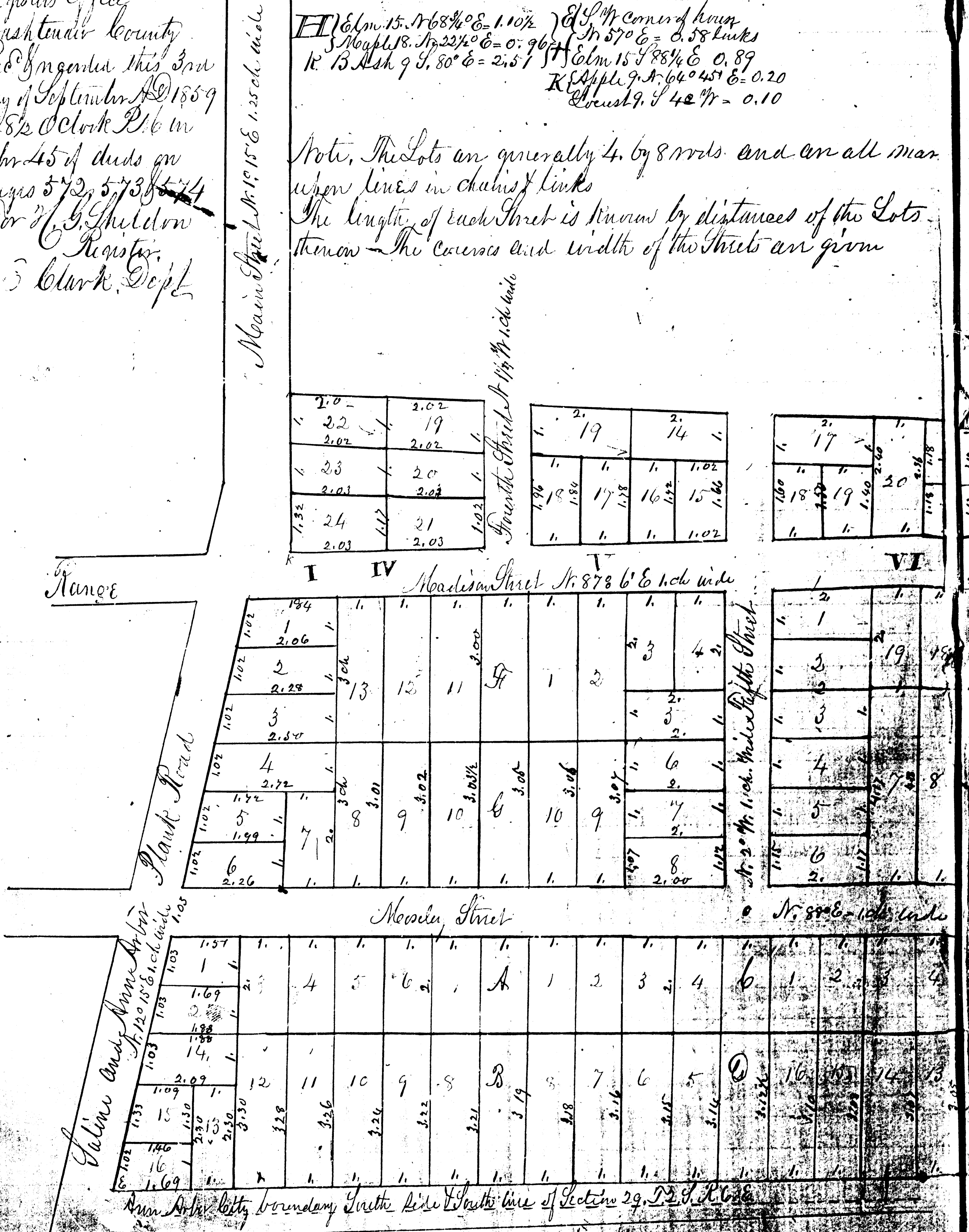


Plat of Maynard and Morgan's Addition in the City of Ann Arbor

Register Office
Washtenaw County
Rec'd & indexed this 3rd
day of September A.D. 1859
at 8 1/2 O'clock P.M. in
Lib. 45 of deeds on
pages 572, 573, 574
For J. G. Sheldon
Register.
S. Clark, Depl

H. Elm 15. N 68 3/4° E = 1.10 1/2
 S Maple 18. N 22 1/2° E = 0.96 1/2
 R. B. Ash 9 S. 80° E = 2.57
 S. M. corner of hwy
 N 57° E = 0.58 links
 H. Elm 15 S 88 1/4° E = 0.89
 K. Apple 9. A. 64° 45' E = 0.20
 C. Bush 9. S 42° W = 0.10

Note. The Lots are generally 4. by 8 rods. and on all mar-
up on lines in chains of links
The length of each Street is known by distances of the Lots
thereon - The courses and width of the Streets are given



1} Apple 7 N 46 1/4° W = 1.85 1/2

2} N.E. corner of Steam Saw Mill
S 32 1/2° W = 1.52

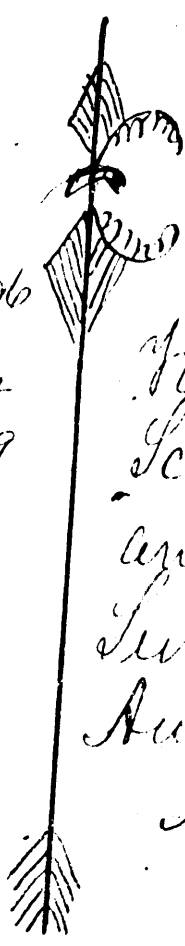
3} four near Steam Saw Mill
N.E. corner S 17° W = 2.16

4} Apple 9 N 8 1/2° E = 1.53

2} N.O. 24 S 24 1/2° W = 0.96

3} N.O. 6 N 86 1/2° W = 0.15 1/2

4} N.O. 24 S 20° W = 0.99



Mag. decl. 0° 56' E
Scale 2 chains to
an inch
Surveyed in July and
August 1859
By W. Weeks.

66
52.6
32.8

N. 20° W = 1.25 ch wide

Administration Square West Side

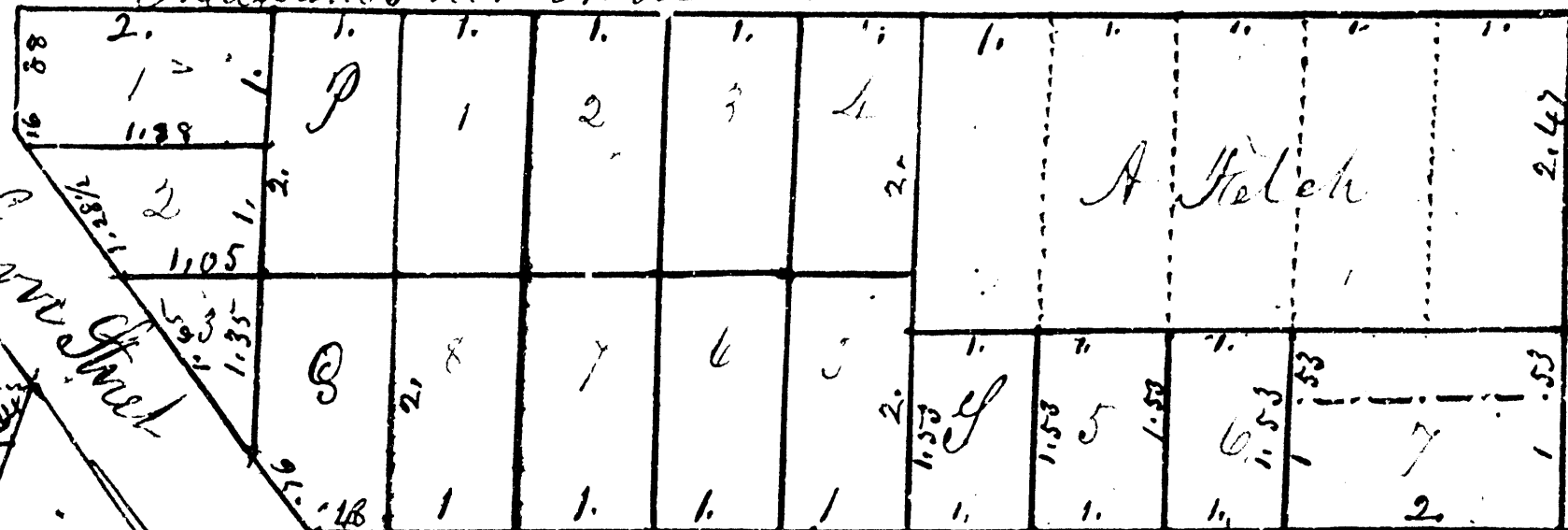
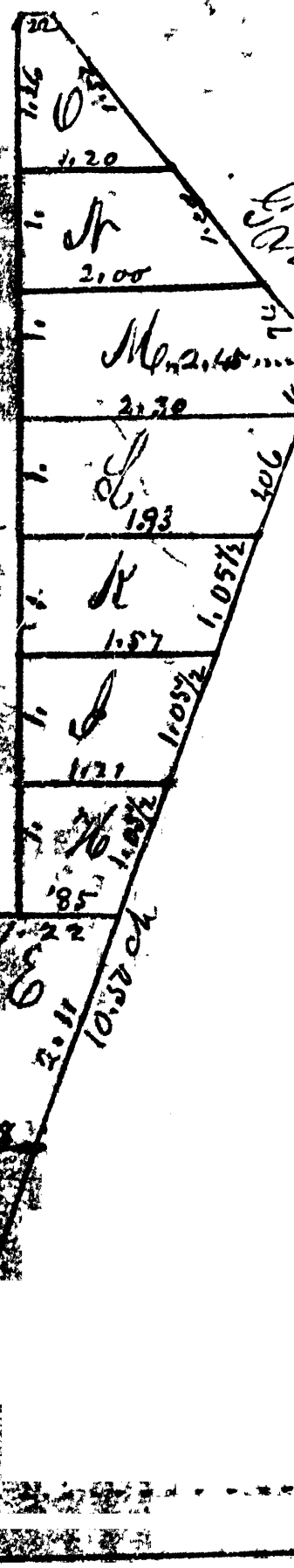
Dixson Street

Hopwood Square

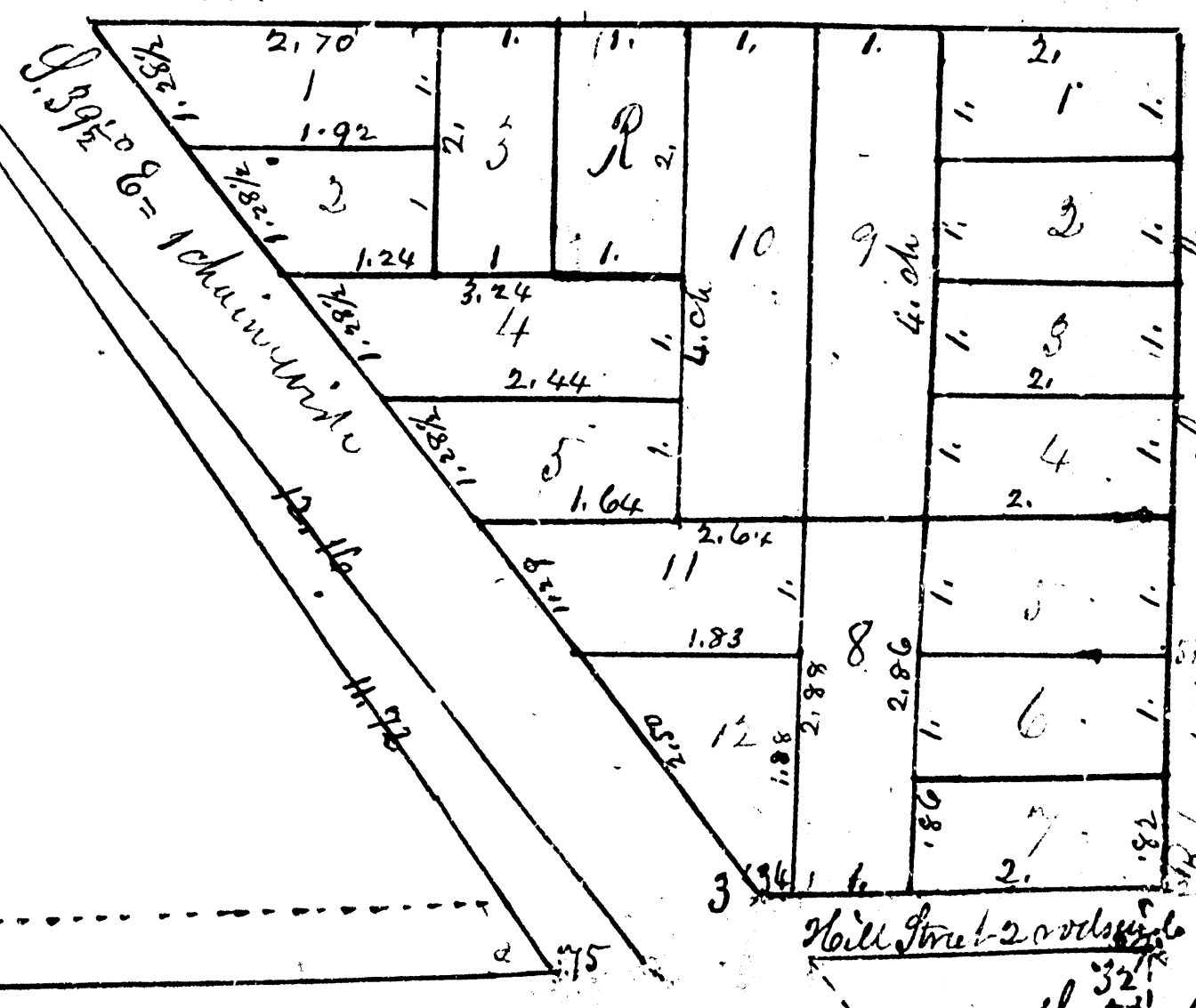
Howland Street
1/2 ch wide

VII Madison Street N. 88 1/2° E = 1 ch wide

N. 20° W = 1 ch wide



McNave Street N. 88 1/2° E = 1 ch wide



N. 20° W = 1 ch wide