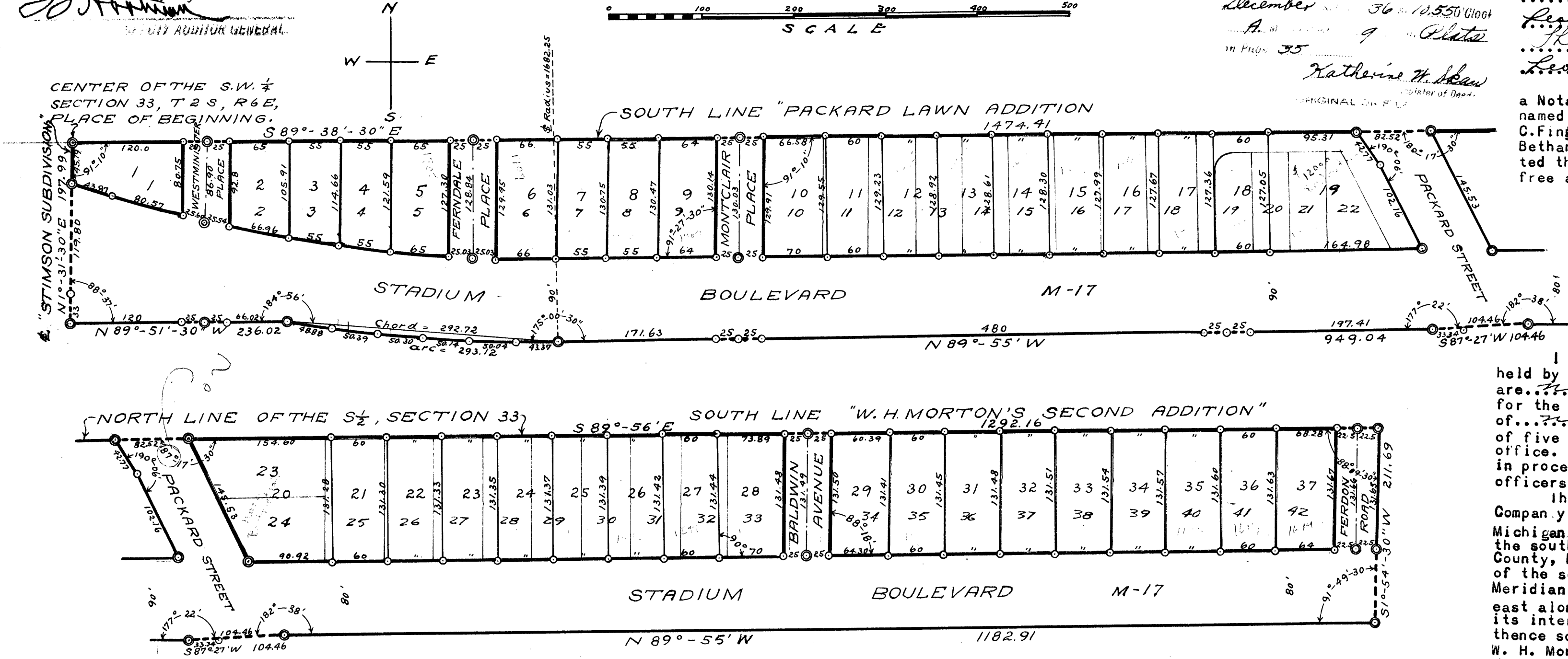


36
 BEING PART OF THIS DEED
 THE CITY OF ANN ARBOR
 WASHTENAW COUNTY, MICHIGAN
 12/28/36
 Louis C. Andrews, General

**"FRISINGER LAND COMPANY'S SUBDIVISION
 IN THE CITY OF ANN ARBOR, WASHTENAW COUNTY, MICHIGAN
 A RESUBDIVISION OF WILLIAM OSIUS SUBDIVISION"
 PART OF THE SOUTH HALF SECTION 33 T2S R6E - WASHTENAW COUNTY, MICHIGAN**

Register's Office
 Washtenaw County, Michigan
 Plat of Frisinger Land
 Company's Subdivision
 December 27th 1936
 A.M. 11:55
 11 Pages 35
 Katherine H. Olson
 Notary Public

Signed and Sealed in
 Presence of
 Clo. Edward Frisinger
 Mary Agnes Frisinger
 Earle C. Fingerle
 Phyllis A. Fingerle
 Hugh E. Wilson
 Bethany L. Wilson
 on this 26th day of December 1936 before me
 a Notary Public in and for said county, personally came the above
 named Clo Edward Frisinger and Mary Agnes Frisinger his wife, Earle
 C. Fingerle and Phyllis A. Fingerle his wife and Hugh E. Wilson and
 Bethany L. Wilson his wife, known to me to be the persons who execu-
 ted the above dedication, and acknowledged the same to be their
 free act and deed.
 Notary Public... Katherine H. Olson... Co. Michigan.
 My Commission Expires... 1938



COUNTY TREASURER'S CERTIFICATE
 Office of the County Treasurer Washtenaw County, Michigan.

I hereby Certify, that there are no tax liens or titles held by the State on the lands described below, and that there are no tax liens or titles held by individuals on said lands for the five years preceding the day of December 26, 1936 and that the taxes for said period of five years are paid as shown by the records of this office. This certificate does not apply to taxes, if any, now in process of collection by township, city or village collecting officers.

The land embraced in the annexed plat of the "Frisinger Land Company's Subdivision in the City of Ann Arbor, Washtenaw County, Michigan, a re-subdivision of William Osius Subdivision, part of the south half of section 33, town 2 south, range 6 east, Washtenaw County, Michigan is described as follows: Commencing at the center of the south west quarter of section 33, town 2 south, range 6 east, Meridian of Michigan; thence south 89 degrees 38 minutes 30 seconds east along the south line of Packard Lawn Addition 1474.41 feet to its intersection with the north easterly line of Packard Street; thence south 89 degrees 56 minutes east along the south line of W. H. Morton's Second Addition 1292.16 feet; thence south 1 degree 54 minutes 30 seconds west 211.69 feet to the southerly line of a State Trunk Line M.17; thence north 89 degrees 55 minutes west along said southerly line 1182.91 feet; thence south 87 degrees 27 minutes west 104.46 feet; thence north 89 degrees 55 minutes west 949.04 feet to a point of curve; thence in an arc of a circular curve the right of radius 1682.25 feet thru a central angle of 9 degrees 59 minutes 29.12 seconds; thence north 89 degrees 51 minutes 30 seconds west 236.02 feet to the east line of "Stimson's Subdivision"; thence north 1 degree 31 minutes 30 seconds east along said east line 197.99 feet to the place of beginning.

County Treasurer
 CERTIFICATE OF APPROVAL BY THE COMMON COUNCIL
 This plat was approved by the Common Council of the City of Ann Arbor at a meeting held... 1936.
 Clerk

CERTIFICATE OF APPROVAL BY THE BOARD OF PUBLIC WORKS
 This plat was approved by the Board of Public Works of the City of Ann Arbor at a meeting held... 1936.
 Clerk

CERTIFICATE OF APPROVAL BY THE BOARD OF COUNTY AUDITORS
 Approved by the Board of County Auditors of Washtenaw County, Michigan, the... day of... 1936.
 Chairman

CERTIFICATE AS TO STATE TRUNK LINE OR FEDERAL AIDED ROADS
 We hereby certify that said plat appears to include land located on a state trunk line or federal aided road.
 Examined and approved... 1936
 State Highway Commissioner

DEDICATION
 KNOW ALL MEN BY THESE PRESENTS: That we the Frisinger Land Company, a Michigan Corporation by Louis C. Andrews, Vice President, and Edward F. Conlin Secretary, as proprietor have caused the land embraced in the annexed plat to be surveyed, laid out, and platted to be known as "FRISINGER LAND COMPANY'S SUBDIVISION in the City of Ann Arbor, Washtenaw County, Michigan, a re-subdivision of William Osius Subdivision, part of the south half of section 33, town 2 south, range 6 east, Washtenaw County, Michigan, and that the streets and alleys as shown on said Frisinger Land Company's Subdivision in the City of Ann Arbor, Washtenaw County, Michigan, a re-subdivision of William Osius Subdivision part of the south half of section 33, town 2 south, range 6 east, Washtenaw County, Michigan, are hereby dedicated to the use of the public.

Frisinger Land Company
 Signed and Sealed in the presence of
 Vice President
 Secretary

STATE OF MICHIGAN }
 County of Washtenaw } SS
 On this 24th day of Oct. 1936, before me, a Notary Public in and for said county, appeared Louis C. Andrews and Edward F. Conlin, to me personally known, who being by me duly sworn did say that they are the Vice President and Secretary respectively of the Frisinger Land Company a Michigan Corporation, and that the seal affixed to said instrument is the corporate seal of said corporation and that said instrument was signed and sealed in behalf of said corporation by authority of its Board of Directors and the said Louis C. Andrews and Edward F. Conlin acknowledged said instrument to be the free act and deed of said corporation.
 Notary Public Washtenaw County
 My Commission expires November 7, 1939

DESCRIPTION
 The land embraced in the annexed plat of the "Frisinger Land Company's Subdivision in the City of Ann Arbor, Washtenaw County, Michigan, a re-subdivision of William Osius Subdivision" part of the south half of section 33, town 2 south, range 6 east, Washtenaw County, Michigan is described as follows: Commencing at the center of the south west quarter, section 33, town 2 south, range 6 east, Meridian of Michigan; thence south 89 degrees 38 minutes 30 seconds east along the south line of "Packard Lawn Addition" 1474.41 feet to its intersection with the north easterly line of Packard Street; thence south 89 degrees 56 minutes east along the south line of "W.H. Morton's Second Addition" 1292.16 feet; thence south 1 degree 54 minutes 30 seconds west 211.69 feet to the southerly line of a State Trunk Line M.17; thence north 89 degrees 55 minutes west along said southerly line 1182.81 feet; thence south 87 degrees 27 minutes west 104.46 feet; thence north 89 degrees 55 minutes west 949.04 feet to a point of curve; thence in the arc of a circular curve to the right of radius 1682.25 feet thru a central angle of 9 degrees 59 minutes 29.12 seconds; thence north 89 degrees 51 minutes 30 seconds west 236.02 feet to the east line of "Stimson's Subdivision"; thence north 1 degree 31 minutes 30 seconds east along said east line 197.99 feet to the place of beginning.

SURVEYOR'S CERTIFICATE
 I hereby certify that the plat hereon shown is a correct one and that permanent metal monuments of not less than one inch in diameter and fifteen inches in length set in a concrete base at least four inches in diameter and forty eight inches in depth have been placed at all points marked thus @ as thereon shown at all angles in the boundaries of the land platted at all the intersections of streets, intersections of alleys, or of streets and alleys, and at the intersections of streets and alleys with the boundaries of the plat as shown on said plat.
 Registered Civil Engineer and Surveyor

DEDICATION
 KNOW ALL MEN BY THESE PRESENTS that we Clo Edward Frisinger as proprietor and Mary Agnes Frisinger his wife Earle C. Fingerle as proprietor and Phyllis A. Fingerle his wife and Hugh E. Wilson as proprietor and Bethany L. Wilson his wife have caused the land embraced in the annexed plat to be surveyed, laid out and platted to be known as "FRISINGER LAND COMPANY'S SUBDIVISION in the City of Ann Arbor, Washtenaw County, Michigan, a re-subdivision of William Osius Subdivision" on part of the south half of section 33, town 2 south, range 6 east, Washtenaw County, Michigan, and that the streets and alleys as shown on said plat are hereby dedicated to the use of the public.

Examined and Approved
 12/28/36
 Louis C. Andrews, General