

# Proposal Introduction: 2022 Transit Expansion and Millage

Ann Arbor City Council

May 2022

Matt Carpenter, CEO TheRide

[mcarpenter@theride.org](mailto:mcarpenter@theride.org)

(734) 794-1767

# Meeting Purpose and Agenda

## Purpose

- Introduce 2022 millage proposal

## Agenda

1. Long-Range Plan
2. 2022 Ballot Proposal
3. Timeline



*All details at [www.TheRide.org](http://www.TheRide.org)*

# Key Points

- 5-year, 2.38 mills to maintain and expand services (0.7 existing + 1.68 new)
- Follows extensive public input, Board direction and local policy documents
- Benefits for seniors, persons with disabilities or low incomes, workers, students, car-free, etc.
- TheRide can leverage outside funds with local tax revenue
- Outlined in **Long-Range Plan** and **2022 Proposal**



# Long-Range & Short-Range Plans

- **Long-Range Plan: TheRide2045**
  - 25-year vision & blueprint
  - Public involvement since 2019
  - Includes five, 5-year millage votes
  - Built-in voter decisions
- **Short-Range: 2022 5-year ballot measure**
  - 2024-2028
  - First five years of Long-Range Plan
  - 2.38 mills (0.7 existing + 1.68 mill new)



# Goals

## Community Values Drive Transit's Goals:

- 🎯 Increase social equity, access to jobs, education, and housing
- 🎯 Help the environment and reduce air pollution
- 🎯 Support existing and new businesses



# Public & Stakeholder Engagement

- Long-Range Plan & Millage involvement
  - Public & stakeholder meetings
  - Virtual meetings
  - On-Line survey
  - 1,400+ contacts
  
- Round 2 (Oct 2021) included four scenarios with mill rates
  - Strong desire for increased services

## What We Heard

**Desire for transformational change**


People want to see improved transit that fundamentally changes transportation in order to achieve:

- Social Equity
- Less car usage
- Climate goals

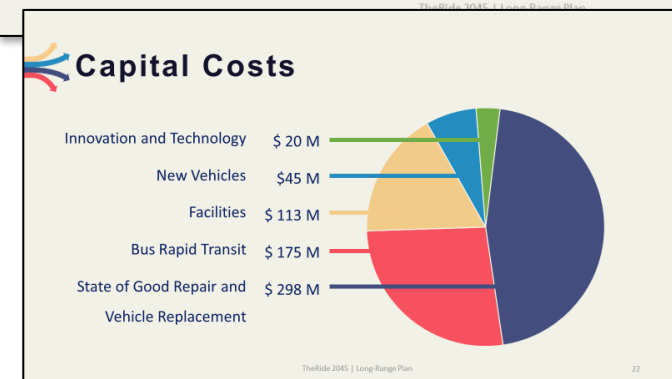
Most of the people we heard from are willing to pay for the investments if the benefits are clear

**Convenience, reliability and dependability**

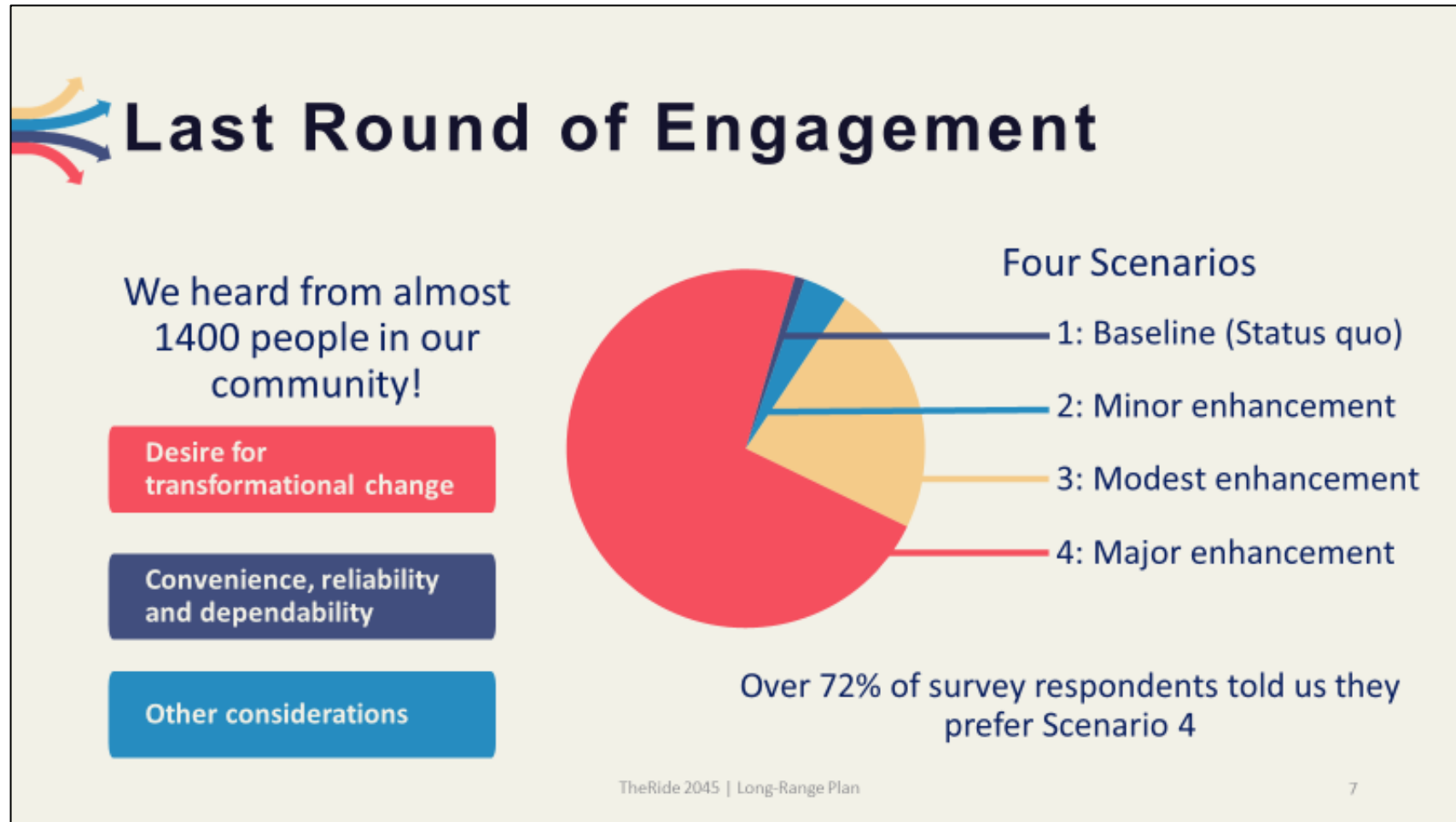
**Other considerations**



The Ride 2045 | Long-Range Plan

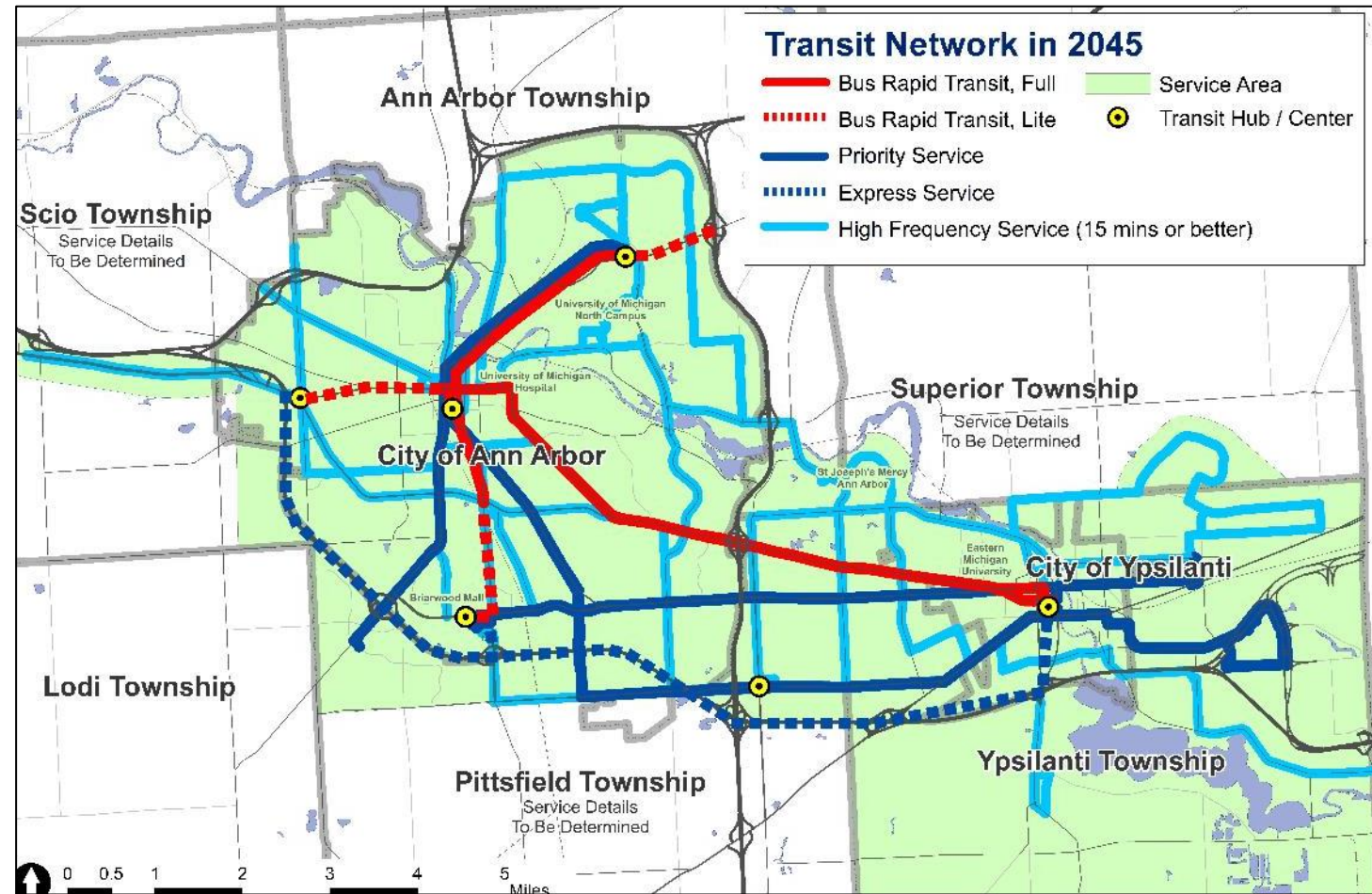


# Public & Stakeholder Engagement



# Local Service

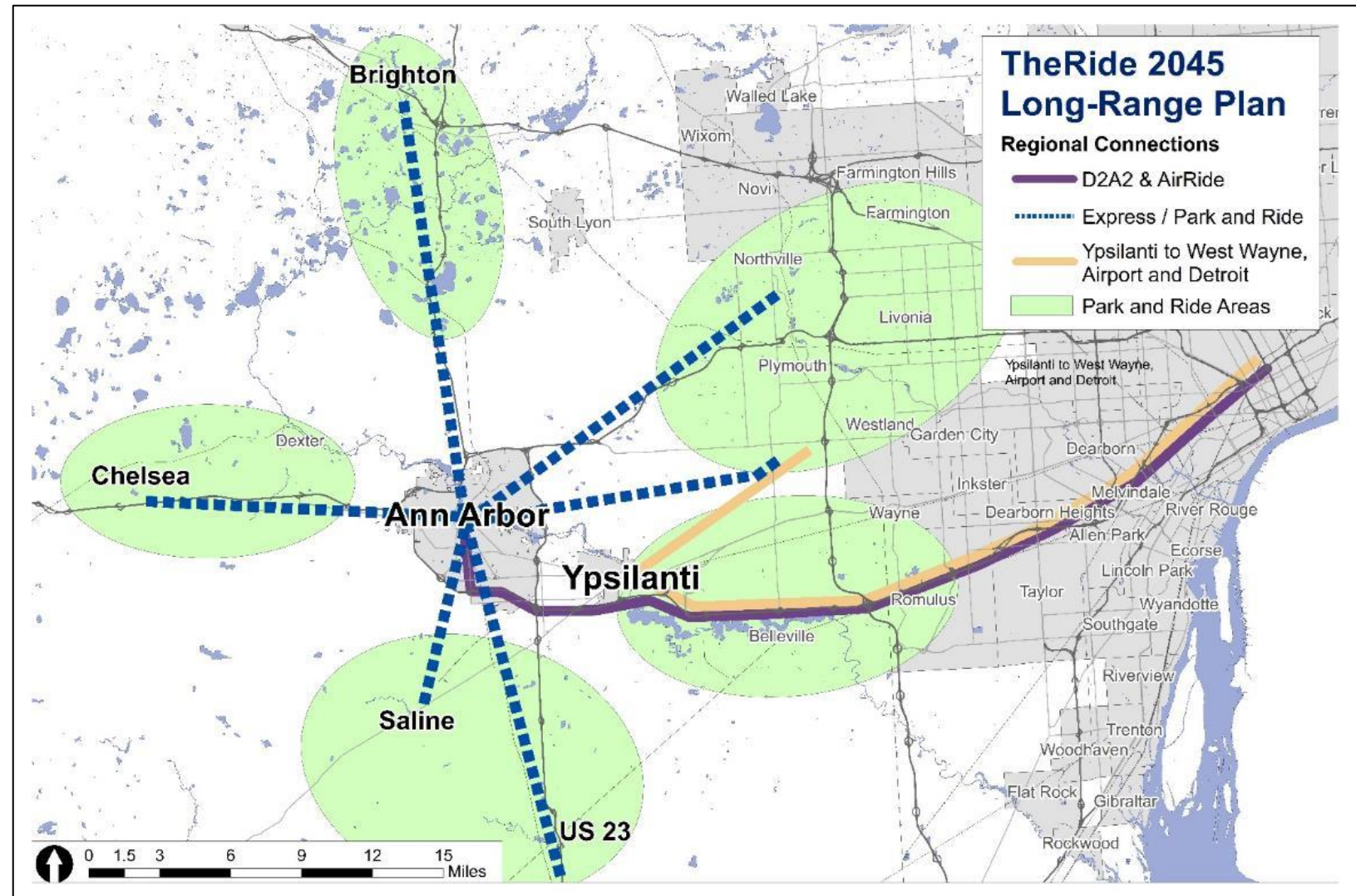
- High-Frequency Network
- Geared towards attracting drivers to transit
- More grid, less hub n spoke
- Fulfills TMP and A2Zero





# Regional Park n Ride

- Large park n ride lots
- Highway coach service
- Targeting 10,000 cars/day



# Recent Successes & Momentum

- Council approval for 350 S. 5<sup>th</sup> (Y-Lot) concept
- Council approval for T1 (transit supportive zoning)
- Earmark from Sen. Peters: \$300,000 for Ypsilanti Transit Center



# Meeting Purpose and Agenda

## Purpose

- Introduce 2022 millage proposal

## Agenda

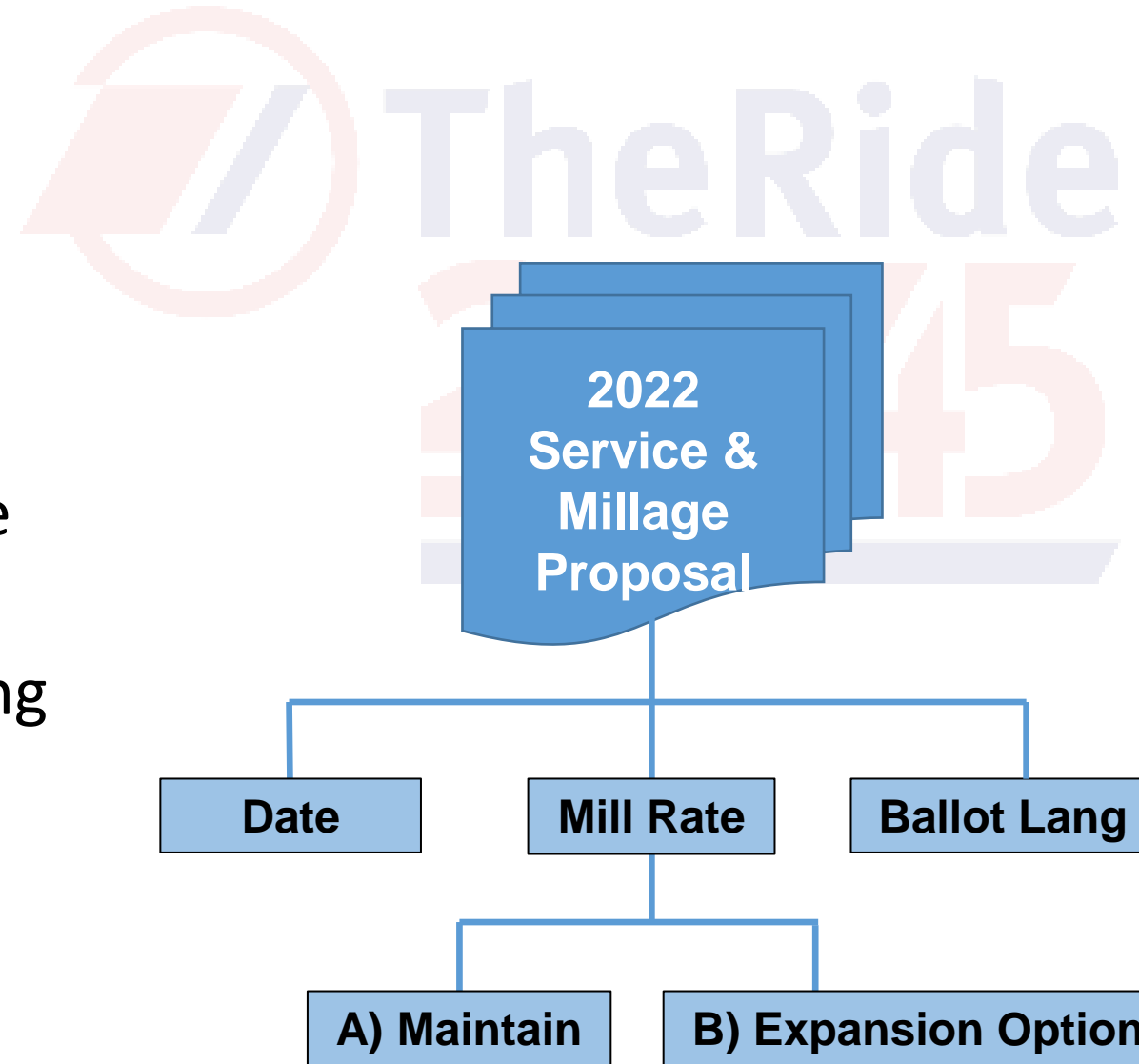
1. Long-Range Plan
2. 2022 Ballot Proposal
3. Timeline



*All details at [www.TheRide.org](http://www.TheRide.org)*

# 2022 Proposal

- Maintains all AAATA services
- Expansion of key services
- Aligned with goals and Long-Range Plan
- Maximizes state and federal funding



# A. Maintaining Existing Service

## Necessary to maintain services:

1. Renewal of Existing Millage (0.7)
2. Deficit Allowance
3. Inflation Allowance
4. Staffing



## B. Service Enhancement Options

**Opportunities to enhance services, help community, advance goals**

5. Ann Arbor-Ypsilanti Downtown Express
6. Longer Hours of Service
7. Increased Frequency of Service
8. Expand Overnight Service
9. Customer Service Agents (YTC)
10. Funding for Major Capital Projects



# 5. Ann Arbor-to-Ypsilanti Express

**Limited-stop express route along Washtenaw Ave. Departures every...**

- Increases speed by 1/3
- Increase integration of Ann Arbor and Ypsilanti. Brings all opportunities closer together.
- Workers & employers, education, medical, social, housing



# 6. Longer Hours of Operation, Systemwide

## Consistently longer hours of operation

- Consistent longer hours of evening service, weekend and weekdays
- Today some routes stop or start earlier than others
- Earlier Saturday service





# 7. Increase Weekend Frequency, Systemwide

## More buses on the weekends

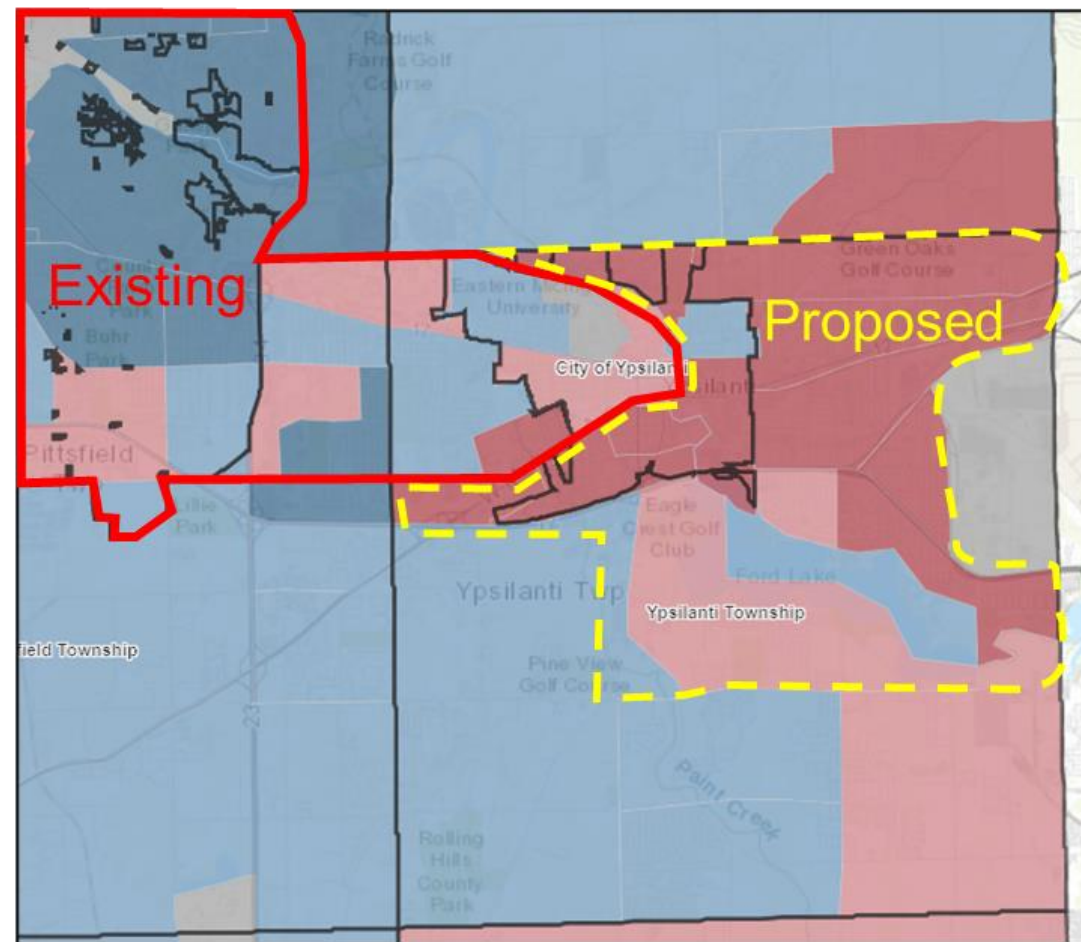
- Increases all 60-minute service to every 30-minutes
- Frequency = Freedom
- Increases flexibility and independence
- Benefits: seniors, persons with disabilities or low income, car-free lifestyle, workers



# 8. Expand Overnight Service to Ypsilanti, Ypsilanti Township

## Add overnight and holiday service

- Presently, overnight service (NightRide) only in Ann Arbor, and parts of Ypsi and Ypsi Twp
- Will expand NightRide to all of City of Ypsi, all of Ypsi Twp north of Textile Road.



# 9. Customer Service Agents at Ypsi Center

## In-person agents at Ypsilanti Transit Center

- Weekdays during regular business hours
- Ypsi Transit Center has not had these staff in years. Ann Arbor does.
- Would allow ticket sales, Q/A, and all equivalent services.
- Bring poor office space up to standards.



# 10. Funding Major Capital Projects

## Capital sinking fund for future projects

- Can be used for terminals, BRT, garage, etc.
- Can help fund *zero-emission buses*
- Need local funds to leverage 50% federal grants



# 2022 Service Proposal Summary

Elements and Costs of 2022 Service and Millage Proposal						
	Annual Cost (Gross)*		Mill Rate (Net)*		Cumulative Mill Rate	Start Date **
	\$	% of Total Costs	Rate	% of Total Rate		
<b>Maintain Existing Services</b>						
1. Renewal of existing millage	\$ 5,600,000	26%	0.70	29%	0.70	Aug 2024
2. Allowance for deficit	\$ 4,800,000	22%	0.60	25%	1.30	Aug 2024
3. Allowance for inflation	\$ 1,280,000	6%	0.13	5%	1.43	Aug 2024
4. Additional Staff (9 FTEs)	\$ 940,000	4%	0.09	4%	1.52	2023-2024
<b>Subtotal</b>	<b>\$ 12,620,000</b>	<b>58%</b>	<b>1.52</b>	<b>64%</b>		
<b>Service Enhancement Options</b>						
5. Ann Arbor-Ypsilanti Express Service	\$ 930,000	4%	0.07	3%	1.59	Aug 2024
6. Longer Hours of Operation Systemwide	\$ 1,901,000	9%	0.15	6%	1.74	Aug 2024
7. Increase Weekend Frequency Systemwide	\$ 1,996,000	9%	0.14	6%	1.88	Aug 2024
8. Expand Overnight Service (Ypsi Twp & Ypsi)	\$ 1,066,000	5%	0.09	4%	1.97	Aug 2024
9. Customer Service Agents (Ypsi Transit Center)	\$ 184,000	1%	0.01	0%	1.98	2023-2024
10. Funding Major Capital Projects	\$ 3,200,000	15%	0.40	17%	2.38	2024
<b>Subtotal</b>	<b>\$ 9,277,000</b>	<b>42%</b>	<b>0.86</b>	<b>36%</b>		
<b>Totals</b>	<b>\$ 21,897,000</b>		<b>2.38</b>			

Full proposal document at [www.TheRide.org](http://www.TheRide.org)

# Timeline

- **2019-2022:** General Public Involvement
- **March-April 2022:** Millage proposal released, feedback, presentations to stakeholders
- **March 17<sup>th</sup>:** AAATA Board Discussion
- **April 21<sup>st</sup>:** AAATA Board Decision
- **August 2:** Election



# In Closing

- 5-year, 2.38 mills to maintain and expand services (0.7 existing + 1.68 new)
- Follows extensive public input, Board direction and local policy documents
- Benefits for seniors, persons with disabilities or low incomes, workers, students, car-free, etc.
- Thank you for your continued leadership and support!



# Contact Information

Please send any questions regarding this presentation to

Matt Carpenter, CEO

[mcarpenter@theride.org](mailto:mcarpenter@theride.org)

[\(734\) 794-1767](tel:(734)794-1767)



*All details at [www.TheRide.org](http://www.TheRide.org)*



# Proposal Introduction: 2022 Transit Expansion and Millage

Ann Arbor City Council

April 2022

Matt Carpenter, CEO TheRide

[mcarpenter@theride.org](mailto:mcarpenter@theride.org)

(734) 794-1767