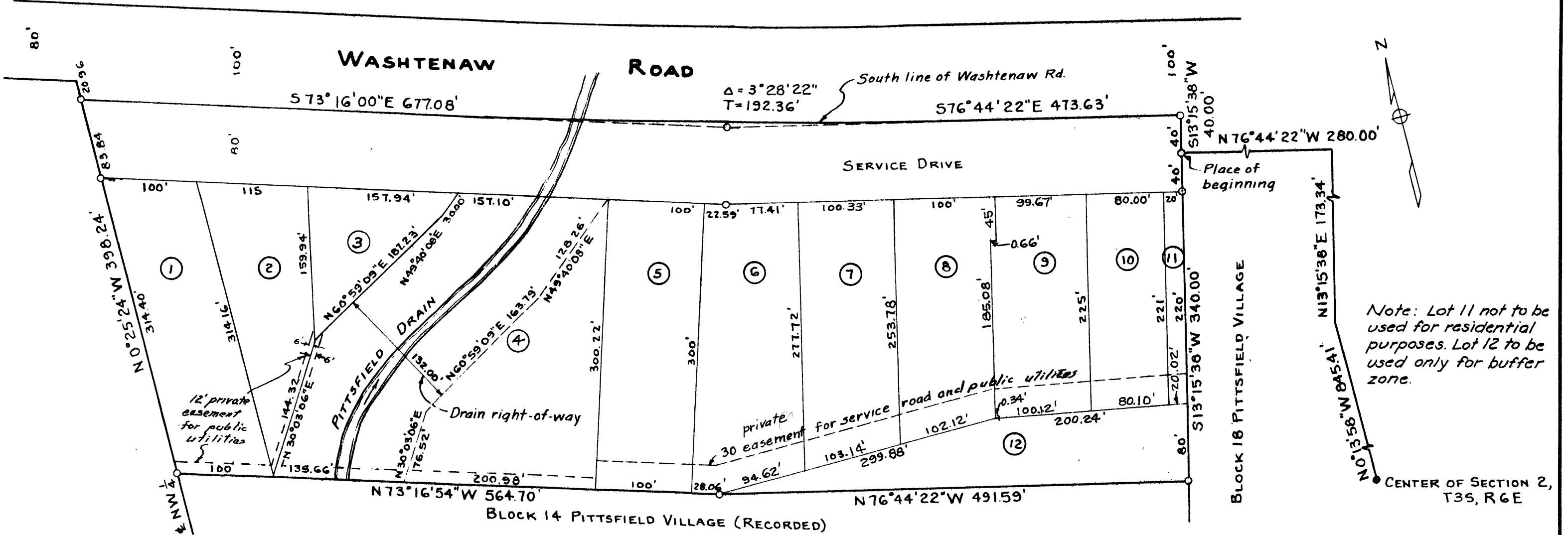


PITTSFIELD PLAZA

A SUBDIVISION OF PART OF SECTION 2, TOWN 3 SOUTH, RANGE 6 EAST,
CITY OF ANN ARBOR, WASHTENAW COUNTY, MICHIGAN

SCALE: 1"=100'
NOTE: ALL DIMENSIONS ARE IN FEET AND DECIMALS THEREOF



DEDICATION

KNOW ALL MEN BY THESE PRESENTS, That we, PITTSFIELD-PLAZA, INC., a Michigan Corporation, PITTSFIELD VILLAGE, INC., a Michigan Corporation, (Lot 12), EMMA E. LIGHTHALL (Lot 7), ALBERT B. WHITLEY and LUCILLE WHITLEY, husband and wife, (Lot 9), HOLLIS WM. FREEMAN and ETHEL F. FREEMAN, husband and wife, (Lot 8), SAMUEL LEVY and CLARA LEVY, husband and wife, (Lot 1), CARROLL H. DICK and LOIS M. DICK, husband and wife, (Lot 11), as Proprietors, and STATE BANK AND TRUST COMPANY (formerly State Savings Bank of Ann Arbor), a Michigan Corporation, (Lot 8), J. FRED SUMMERS (Lot 1), CHARLES A. CARVER, JR., and EVELYN L. CARVER, husband and wife, (Lot 1), and ANN ARBOR FEDERAL SAVINGS AND LOAN ASSOCIATION, a corporation, (Lot 11), Mortgagees, have caused the land embraced in the annexed plat to be surveyed, laid out and platted, to be known as "PITTSFIELD PLAZA", a subdivision of part of Sec.2, T3S, R6E, City of Ann Arbor, Washtenaw County, Michigan, and that the Service Drive as shown on said plat is hereby dedicated to the use of the public.

Emma E. Lighthall
Emma E. Lighthall
Albert B. Whitley
Albert B. Whitley
Lucille Whitley
Lucille Whitley
Hollis Wm. Freeman
Hollis Wm. Freeman
Ethel F. Freeman
Ethel F. Freeman
Samuel Levy
Samuel Levy
Clara Levy
Clara Levy
Carroll H. Dick
Carroll H. Dick
Lois M. Dick
Lois M. Dick
J. Fred Summers
J. Fred Summers
Charles A. Carver, Jr.
Charles A. Carver, Jr.
Evelyn L. Carver
Evelyn L. Carver
Ruth M. Hollister
Ruth M. Hollister, Witness
Hazel Starcher
Hazel Starcher, Witness

PITTSFIELD-PLAZA, INC. and PITTSFIELD VILLAGE, INC.
By *Maxwell E. Pead*
Maxwell E. Pead,
Their Vice-President
By *George J. Pipe*
George J. Pipe,
Their Secretary
STATE BANK AND TRUST COMPANY
By *H. E. Gross*
H. E. Gross, Its President
By *P. M. Crandall*
P. M. Crandall, Its Cashier
ANN ARBOR FEDERAL SAVINGS AND LOAN ASSOCIATION
By *William C. Walz*
William C. Walz,
Its President
By *Frederick Schmid*
Frederick Schmid,
Its Secretary

DESCRIPTION OF LAND PLATTED

The land embraced in the annexed plat of "Pittsfield Plaza", a Subdivision of part of Section 2, Town 3 South, Range 6 East, City of Ann Arbor, Washtenaw County, Michigan contains 12 lots numbered 1 through 12 and is described as follows:

Commencing at the center of said Section 2, thence N 0° 13' 58" W in the north and south quarter line of said section 845.41 feet; thence N 13° 15' 38" E 173.34 feet; thence N 76° 44' 22" W 280.00 feet to the northwest corner of Block 18 of Pittsfield Village, a recorded plat, for a place of beginning; thence S 13° 15' 38" W 340.00 feet; thence N 76° 44' 22" W in the north line of Block 14, Pittsfield Village 491.59 feet; thence N 73° 16' 54" W in the north line of said Block 14 564.70 feet to the north-south center line of the northwest quarter of said Section 2; thence N 0° 25' 24" W in said line 398.24 feet to a point in the south right-of-way line of Washtenaw Avenue; thence S 73° 16' 00" E in said right-of-way line 677.08 feet to the point of intersection of a circular curve having a central angle of 3° 28' 22" and a tangent distance of 192.36 feet; thence S 76° 44' 22" E in said right-of-way line 473.63 feet; thence S 13° 15' 38" W 40.00 feet to the place of beginning.

COUNTY TREASURER'S CERTIFICATE

Office of County Treasurer
Washtenaw County, Michigan
I hereby certify that there are no tax liens or titles held by the State on the lands described hereon and that there are no tax liens or titles held by individuals on said lands for five years preceding the 1st day of December, 1960, and that the taxes for said period of five years are paid, as shown by the records of this office. This Certificate does not apply to taxes, if any, now in process of collection by Township or City collecting officers.

W. F. Verner
W. F. Verner (County Treasurer)

CERTIFICATE AS TO STATE TRUNK LINE OR FEDERAL AID ROADS

We hereby certify that said plat appears to include land located on a state trunk line or federal aid road.

Patricia Newkirk Hardy
Patricia Newkirk Hardy
(County Register of Deeds)
J. Martin Rempff
J. Martin Rempff (Auditor)
John P. Cook
John P. Cook (Auditor)
Herbert G. Coeffler
Herbert G. Coeffler (Auditor)
John H. Flook
John H. Flook (Drain Commissioner)

APPROVAL BY COUNTY PLAT BOARD

This plat was approved on the 23rd day of December, 1960, by the Washtenaw County Plat Board.

Patricia Newkirk Hardy
Patricia Newkirk Hardy
(County Register of Deeds)
J. Martin Rempff
J. Martin Rempff (Auditor)
John P. Cook
John P. Cook (Auditor)
Herbert G. Coeffler
Herbert G. Coeffler (Auditor)
John H. Flook
John H. Flook (Drain Commissioner)

CERTIFICATE OF APPROVAL BY THE CITY PLANNING COMMISSION

This plat was approved by the Planning Commission of the City of Ann Arbor, Michigan, at a meeting held on the 23rd day of December, 1960

Richard A. Ware
Richard A. Ware (Chairman)
William J. Burt
William J. Burt (Secretary)

MUNICIPAL APPROVAL

This plat was approved by the Council of the City of Ann Arbor at a meeting held on

FILED IN AUDITOR GENERAL'S DEPT.
Date February 24, 1961
Date March 6, 1961
EXAMINED AND APPROVED
Date February 24, 1961
Otis M. Smith
OTIS M. SMITH
AUDITOR GENERAL
By *Lyman W. Menson*
Lyman W. Menson
DIRECTOR, TAX DIVISION

Fred J. Looker
Fred J. Looker (Clerk)

SURVEYOR'S CERTIFICATE

I hereby certify that the plat hereon delineated is a correct one and that permanent metal monuments consisting of bars not less than one-half inch in diameter and 36 inches in length, encased in a concrete cylinder at least four inches in diameter and 36 inches in depth have been placed at points marked thus (o) as thereon shown at all angles in the boundaries of the land platted, at all the intersections of streets and alleys with the boundaries of the plat as shown on said plat. All dimensions are given in feet and decimals thereof.

Samuel D. Porter
Samuel D. Porter, Registered
Land Surveyor No. 14,69

ACKNOWLEDGMENT

STATE OF MICHIGAN)
COUNTY OF WASHTENAW) ss.

On this 7th day of Nov, 1958, before me, Ruth M. Hollister, a Notary Public in and for said County, personally came the above named Emma E. Lighthall, Albert B. Whitley, Lucille Whitley, Hollis Wm. Freeman, Ethel F. Freeman, Samuel Levy, Clara Levy, Carroll H. Dick, Lois M. Dick, J. Fred Summers, Charles A. Carver, Jr., and Evelyn L. Carver, known to be the persons who executed the above Dedication and acknowledged the same to be their free act and deed and also personally came the above named Maxwell E. Pead and George J. Pipe to me personally known, who being by me duly sworn did say that they are respectively the Vice-President and Secretary of Pittsfield-Plaza, Inc. and Pittsfield Village, Inc., Michigan Corporations; and H. F. Gross and F. M. Crandall to me personally known, who being by me duly sworn, did say that they are respectively the President and Cashier of State Bank and Trust Company, a Michigan Corporation; and William C. Walz and Frederick Schmid, to me personally known, who being by me duly sworn, did say that they are respectively the President and Secretary of Ann Arbor Federal Savings and Loan Association, a Corporation, and that in each case the seal affixed to said instrument is the corporate seal of the corporation of which they are officers and that in each case said instrument was signed and sealed in behalf of each corporation by authority of its respective boards of directors, and in each case acknowledged said instrument to be the free act and deed of the corporation of which they are officers.

Ruth M. Hollister
Ruth M. Hollister, Notary Public
Washtenaw County, Michigan

My commission expires January 10, 1959

APPROVED 2-13-61
DATE

John C. Mackie
JOHN C. MACKIE
STATE HIGHWAY COMMISSIONER

BY