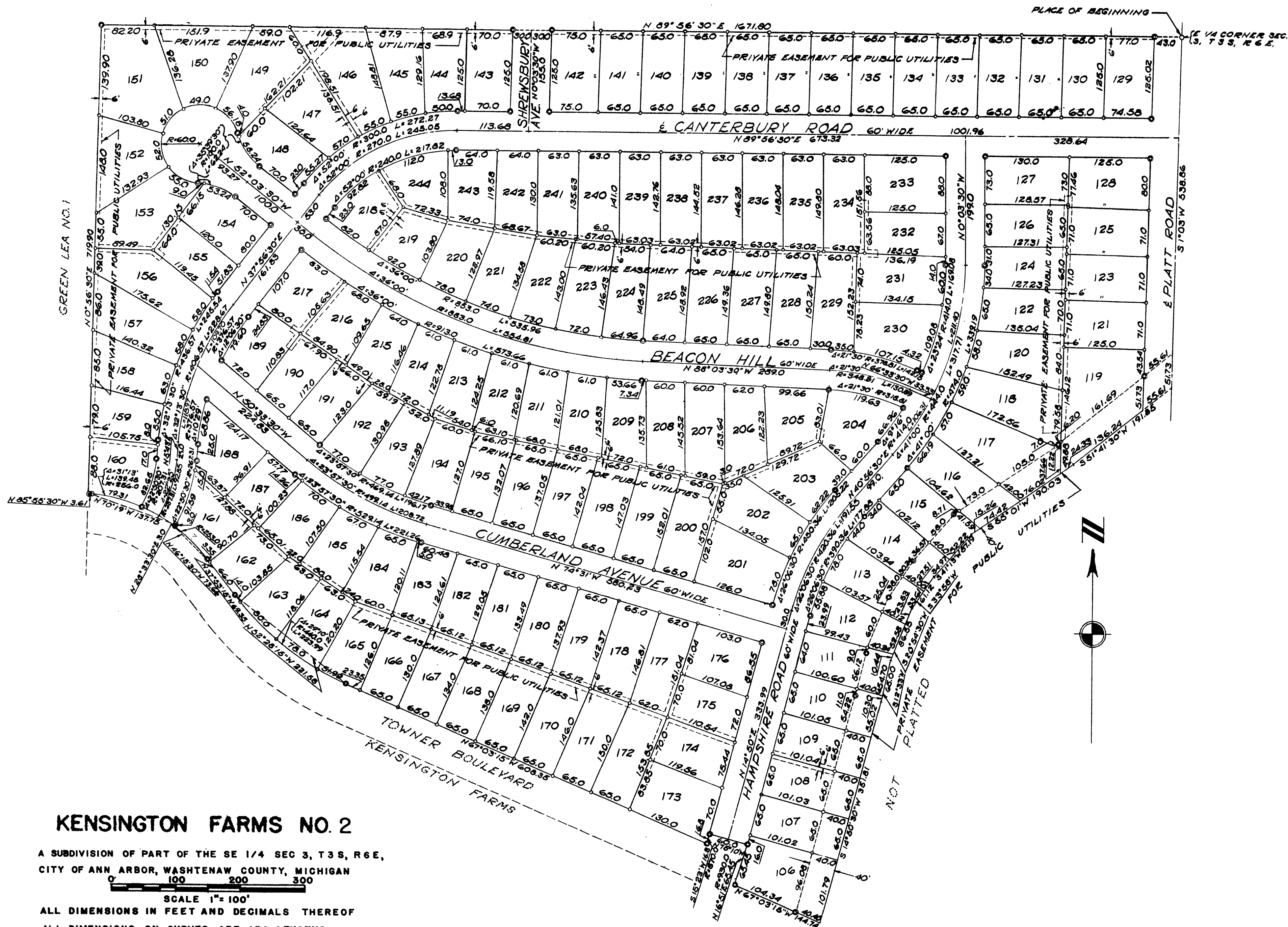


NOT PLATTED



KENSINGTON FARMS NO. 2

A SUBDIVISION OF PART OF THE SE 1/4 SEC 3, T 3 S, R 6 E,
 CITY OF ANN ARBOR, WASHTENAW COUNTY, MICHIGAN



SCALE 1" = 100'

ALL DIMENSIONS IN FEET AND DECIMALS THEREOF

ALL DIMENSIONS ON CURVES ARE ARC LENGTHS

SURVEY BY ATWELL-HICKS, INC.

1 OF 2
 09/30/1955
 KENSINGTON FARMS NO. 2
 PLATTED

KENSINGTON FARMS NO 2

A SUBDIVISION OF PART OF THE SE 1/4 SEC 3, T 3 S, R 6 E,
CITY OF ANN ARBOR, WASHTENAW COUNTY, MICHIGAN



SCALE 1"=100'
ALL DIMENSIONS IN FEET AND DECIMALS THEREOF
ALL DIMENSIONS ON CURVES ARE ARC LENGTHS
SURVEY BY ATWELL-HICKS, INC.

DEDICATION

KNOW ALL MEN BY THESE PRESENTS, that Albert Klager, Wilhelmina J. Klager, his wife; Bernard B. Brown, Dorothy D. Brown, his wife; Donald H. Roberts, Anne B. Roberts, his wife; and Green Lea Development Co., a co-partnership consisting of Leo P. Meyers and Eugene H. Towner, Winifred E. Meyers and Wanda Jean Towner, their wives, as proprietors, have caused the land embraced in the annexed plat to be surveyed, laid out and platted, to be known as KENSINGTON FARMS NO. 2, a subdivision of part of the SE 1/4 Sec 3, T 3 S, R 6 E, City of Ann Arbor, Washtenaw County, Michigan and that the roads, boulevards, avenues and drives as shown on said plat are hereby dedicated to the use of the public.

Signed and Sealed in the Presence of:

Mary M. Minier (Witness) Albert Klager (L.S.)
Priscilla F. Harm (Witness) Wilhelmina J. Klager (L.S.)
Bernard B. Brown (L.S.)
Dorothy D. Brown (L.S.)
Donald H. Roberts (L.S.)
Anne B. Roberts (L.S.)
Green Lea Development Co. By Leo P. Meyers (L.S.) Eugene H. Towner (L.S.) Winifred E. Meyers (L.S.) Wanda Jean Towner (L.S.)

DESCRIPTION OF LAND PLATTED

The land embraced in the annexed plat of KENSINGTON FARMS NO. 2 a subdivision of part of the SE 1/4 Sec 3, T 3 S, R 6 E, City of Ann Arbor, Washtenaw County, Michigan is described as follows:

BEGINNING at the E 1/4 corner of Sec. 3, T 3 S, R 6 E, Pittsfield Township, Washtenaw County, Michigan; thence S 1°-03' W 538.36 feet along the East line of said section; thence S 51°-41'-30" W 191.85 feet; thence S 55°-01' W 190.03 feet; thence S 41°-13' W 87.19 feet; thence S 33°53' W 61.12 feet; thence S 20°-54'-30" W 86.55 feet; thence S 12°-33' W 65.00 feet; thence S 14°-50'-30" W 351.31 feet; thence N 67°-03'-15" W 144.74 feet; thence in the arc of a circular curve concave to the W, radius 930.0 feet, chord N 16°-51' E 65.45 feet; thence N 75°-10' W 60.0 feet; thence in the arc of a circular curve concave to the W, radius 870.0 feet, chord S 15°-23' W 16.8 feet; thence N 67°-03'-15" W 608.35 feet; thence in the arc of a circular curve concave to the NE, radius 440.0 feet, chord N 52°-28'-15" W 221.58 feet; thence N 37°-53'-15" W 69.35 feet; thence in the arc of a circular curve concave to the SW, radius 253.0 feet, chord N 46°-15'-30" W 73.66 feet; thence N 28°-33'-30" E 3.0 feet; thence in the arc of a circular curve concave to the South, radius 256.0 feet, chord N 70°-19' W 137.75 feet; thence N 35°-55'-30" W 3.61 feet; thence N 0°-56'-30" E 719.90 feet; thence N 89°-56'-30" E 1671.80 feet to the place of beginning, containing 139 lots numbered 106 to 244.

SURVEYOR'S CERTIFICATE

I hereby certify that the plat hereon delineated is a correct one and that permanent metal monuments consisting of bars not less than one-half inch in diameter and 36 inches in length, or shorter bars of not less than one-half inch in diameter lapped over each other at least 3 inches with an over-all length of not less than 36 inches, encased in a concrete cylinder at least 4 inches in diameter and 36 inches in depth have been placed at points marked thus (⊙) as thereon shown at all angles in the boundaries of the land platted, at all the intersections of streets, intersections of alleys, or of streets and alleys, and at the intersections of streets and alleys with the boundaries of the plat as shown on said plat.

Herbert S. Hicks
Registered Land Surveyor and Professional Engineer # 1715

ATTORNEY'S OPINION

I hereby certify from an examination of Abstract... of title to the lands described in this plat that I find no outstanding interest, including mineral rights, other than in the parties joining in the dedication.

John P. Laird (Attorney)

CITY CLERK'S CERTIFICATE

Office of City Clerk, City of Ann Arbor
I hereby certify, that the width and depth of lots shown on this plat are in compliance with rules and regulation of the City of Ann Arbor and the requirements as to width and depth of Sec. 30 of Act 172, Public Acts of 1929 as amended by Act 186 Public Acts of 1954.

Fred J. Looker (Clerk)

MUNICIPAL APPROVAL

This plat was approved by the Board of Public Works of the City of Ann Arbor at a meeting held August 17, 1955

Fred J. Looker (Clerk)

MUNICIPAL APPROVAL

This plat was approved by the Common Council of the City of Ann Arbor at a meeting held September 6, 1955

Fred J. Looker (Clerk)

CERTIFICATE OF APPROVAL BY THE CITY PLANNING COMMISSION

This plat was approved by the Planning Commission of the City of Ann Arbor, Michigan, at a meeting held on the 9th day of AUGUST, 1955

John E. Swisher, Jr. (Chairman)
Sybil K. Bennett (Secretary)

APPROVAL BY COUNTY PLAT BOARD

This plat was approved on the 23rd day of September, 1955 by the Washtenaw County Plat Board.

Patricia Newkirk Hardy (County Register of Deeds)
J. Martin Remp (Auditor)
Adolph F. Gross (Auditor)
Herbert G. Loeffler (Auditor)

COUNTY TREASURER'S CERTIFICATE

Office of County Treasurer, Washtenaw County.
I hereby certify, that there are no tax liens or titles held by the State on the lands described hereon, and that there are no tax liens or titles held by individuals on said lands, for the five years preceding the 15th day of September, 1955, and that the taxes for said period of five years are all paid, as shown by the records of this office. This certificate does not apply to taxes, if any, now in process of collection by township, city or village collecting officers.

W. F. Verner (County Treasurer)

ACKNOWLEDGMENT

STATE OF MICHIGAN)
County of Washtenaw) SS.

On this 8th day of August, 1955, before me, a Notary Public in and for said County, personally came the above named Albert Klager and Wilhelmina J. Klager, his wife; Bernard B. Brown and Dorothy D. Brown, his wife; Donald H. Roberts and Anne B. Roberts, his wife, known to me to be the persons who executed the above dedication, and acknowledged the same to be their free act and deed.

Evangelina P. Hicks
Notary Public, Washtenaw County
My Commission expires Nov. 18, 1955

ACKNOWLEDGMENT

STATE OF MICHIGAN)
County of Washtenaw) SS.

On this 8th day of August, 1955, before me, a Notary Public in and for said county appeared Leo P. Meyers, Eugene H. Towner, Winifred E. Meyers, and Wanda Jean Towner to me personally known, who being each by me duly sworn did say that they are co-partners of Green Lea Development Co., a co-partnership, and that said instrument was signed in behalf of said co-partnership and acknowledged said instrument to be the free act and deed of said co-partnership.

Evangelina P. Hicks
Notary Public, Washtenaw County
My Commission expires Nov. 18, 1955

COPY
Register's Office
Washtenaw County, ss.
Plat of _____
was Recorded this _____ day of _____
at _____ o'clock
in the _____ of _____
Page _____
D. L. MacElroy

FREDERICK ROBERT CO. 173H 500-1435