



# CITY OF ANN ARBOR PROJECT MANAGEMENT

IN COOPERATION WITH THE  
MICHIGAN DEPARTMENT OF TRANSPORTATION  
AND THE  
FEDERAL HIGHWAY ADMINISTRATION

## CLAGUE SAFE ROUTES

GREEN ROAD TRAFFIC DATA		NIXON ROAD TRAFFIC DATA	
2012 ANNUAL DAILY TRAFFIC (ADT)	9,700	2012 ANNUAL DAILY TRAFFIC (ADT)	9,800
2030 ADT	11,600	2030 ADT	14,000
2012 COMMERCIAL	1%	2012 COMMERCIAL	2%
2030 COMMERCIAL	1%	2030 COMMERCIAL	2%
POSTED SPEED	35 MPH	POSTED SPEED	30 MPH
DESIGN SPEED	35 MPH	DESIGN SPEED	30 MPH

Sheet List Table	
Sheet Number	Sheet Title
1	COVER SHEET
2	LEGEND, DETAILS AND NOTES
3	LAYOUT PLAN
4	GREEN ROAD RECTANGULAR RAPID FLASHING BEACON
5-8	NIXON ROAD SIDEWALK PLAN AND PROFILE
9	RAMP GRADING

MDOT JOB NO. 117745A  
FEDERAL ITEM NO.

MDOT CONTROL SECTION NO. SRSI-81406  
FEDERAL PROJECT NO. SRS 1481(035)

STANDARD PLANS		
REQUIRED ON THIS PROJECT	ITEM OF WORK	STANDARD PLAN NUMBERS
X	DRAINAGE STRUCTURES	R-1-E
X	MONUMENT BOXES	R-11-D
X	COVER K	R-15-E
X	SIDEWALK RAMP AND DETECTABLE WARNING DETAILS	R-28-H
X	DRIVEWAY OPENINGS & APPROACHES AND CONCRETE SIDEWALKS	R-29-H
X	CONCRETE CURB AND CONCRETE CURB AND GUTTER	R-30-G*
X	PAVED & COBBLE DITCHES & DRAINAGE TREATMENT DETAILS	R-46-D
X	SOIL EROSION & SEDIMENTATION CONTROL MEASURES	R-96-E
X	SEEDING AND TREE PLANTING	R-100-G
X	BIO-SWALE FOR DITCH	R-105-D

TRAFFIC AND SAFETY STANDARD PLANS		
REQUIRED ON THIS PROJECT	ITEM OF WORK	STANDARD PLAN NUMBERS
X	TEMPORARY TRAFFIC CONTROL DEVICES	WZD-125-E*
X	GROUND DRIVEN SIGN SUPPORTS FOR TEMP SIGNS	WZD-100-A*
X	HANDHOLE-PRECAST, POLYMER CONCRETE	SIG-021-A*
X	COLOR CODE WIRING/EQUIPMENT GROUNDING	SIG-026-A*
X	RECTANGULAR RAPID FLASHING BEACON	SIG-027-B*
X	PEDESTAL FOUNDATION AND SIGNAL MOUNTING DETAILS	SIG-028-B*
X	PEDESTRIAN PUSH BUTTON DETAILS	SIG-120-A*

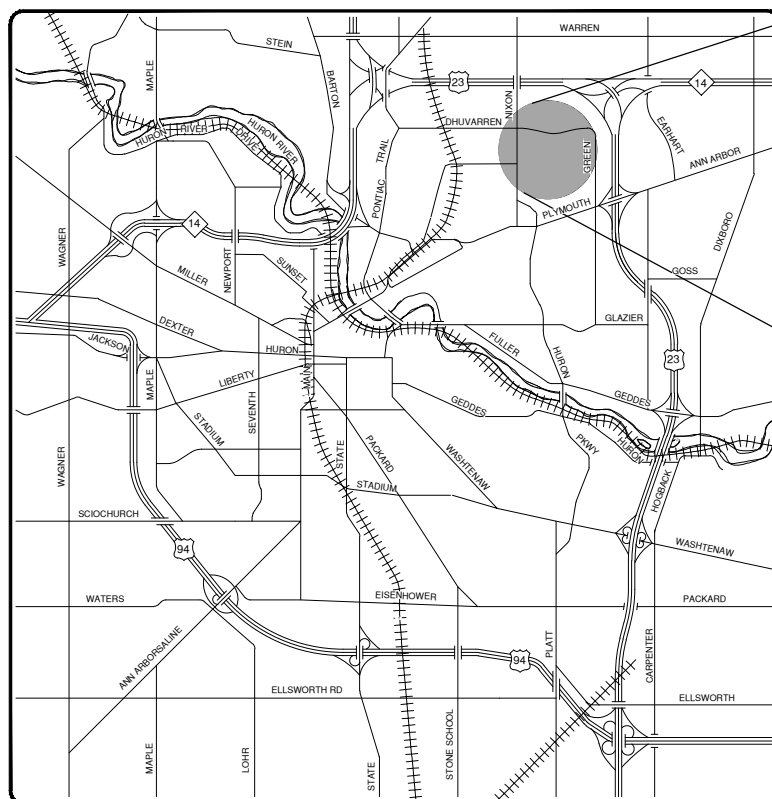
\* SPECIAL DETAIL LOCATED IN PROPOSAL

**NOTES:**  
FOR PROTECTION OF UNDERGROUND UTILITIES AND IN CONFORMANCE WITH PUBLIC ACT 53, THE CONTRACTOR SHALL CALL 811 OR 1-800-482-7171 A MINIMUM OF THREE FULL WORKING DAYS, EXCLUDING SATURDAYS, SUNDAYS, AND HOLIDAYS PRIOR TO BEGINNING EACH EXCAVATION IN AREAS WHERE PUBLIC UTILITIES HAVE NOT BEEN PREVIOUSLY LOCATED. MEMBERS WILL THUS BE ROUTINELY NOTIFIED. THIS DOES NOT RELIEVE THE CONTRACTOR OF THE RESPONSIBILITY OF NOTIFYING UTILITY OWNERS WHO MAY NOT BE A PART OF THE "MISS DIG" ALERT SYSTEM.

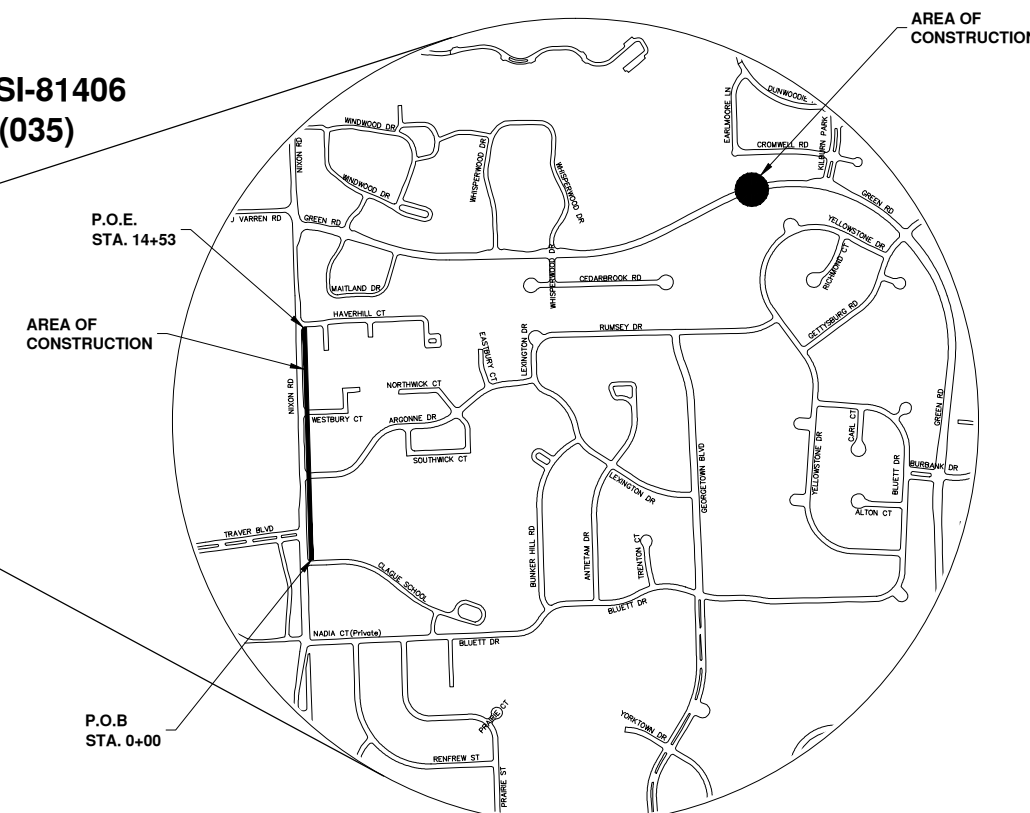
THE UNDERGROUND LOCATIONS SHOWN FOR NATURAL GAS, TELEPHONE, ELECTRICAL POWER, CABLE TV AND FIBER OPTIC LINES ARE APPROXIMATE. THE CITY OF ANN ARBOR ASSUMES NO RESPONSIBILITY FOR THEIR ACCURATE REPRESENTATION IN THIS DRAWING. MISS DIG MUST BE CONTACTED PRIOR TO CONSTRUCTION TO LOCATE THESE UTILITIES.

THE IMPROVEMENTS COVERED BY THESE PLANS SHALL BE PERFORMED IN ACCORDANCE WITH THE MICHIGAN DEPARTMENT OF TRANSPORTATION 2012 STANDARD SPECIFICATIONS FOR CONSTRUCTION (INCLUDING REFERENCED M.D.O.T. PUBLICATIONS) AND THIS PROJECT'S CONTRACT DOCUMENTS.

THE PROPOSED IMPROVEMENTS COVERED BY THESE PLANS ARE DESIGNED IN ACCORDANCE WITH THE 2011 A.A.S.H.T.O. "A POLICY ON GEOMETRIC DESIGN OF HIGHWAYS AND STREETS", AND THE TRAFFIC CONTROL IN ACCORDANCE WITH THE 2012 "MICHIGAN MANUAL OF UNIFORM TRAFFIC CONTROL DEVICES".



VICINITY MAP



**PROJECT MANAGEMENT SERVICE UNIT**  
CITY OF ANN ARBOR PUBLIC SERVICE  
301 EAST HURON STREET, P.O. BOX 8647  
ANN ARBOR, MICHIGAN 48107-8647  
734-794-6410 www.a2gov.org

*Nicholas Hutchinson* 7/17/14  
NICHOLAS HUTCHINSON, P.E.  
PROJECT MANAGEMENT MANAGER

PREPARED UNDER THE SUPERVISION OF  
*Patrick M. Cawley*  
PATRICK M. CAWLEY, P.E. - MII LICENSE No. 40947  
SR. PROJECT MANAGER

7/17/14  
DATE

S:\Project Management\Design\2012036 Clague\Plan Production\Primary\2012036COV.dwg Dwg Created: 29-Nov-12 - \_02 standard bw.stb - Plot Date: 17-Jul-14

811 Know what's below. Call before you dig.

CITY OF ANN ARBOR PUBLIC SERVICE  
301 EAST HURON STREET  
ANN ARBOR, MI 48107-8647  
www.a2gov.org

PROJECT DESCRIPTION AND LIMITS  
PROJECT DESCRIPTION  
PROJECT NO. 2012036 - 1

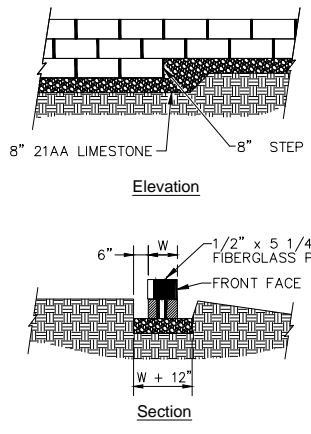
ENGINEER'S SEAL  
PATRICK M. CAWLEY  
ENGINEER  
NO. 40947

PROJECT MANAGEMENT - PUBLIC SERVICES - CITY OF ANN ARBOR

1 TO 9

CLAGUE SAFE ROUTES; 2012036; CONTROL SECTION NO. SRSI-81406; JOB NO. 117745A; FEDERAL PROJECT NO. ; FEDERAL ITEM NO.

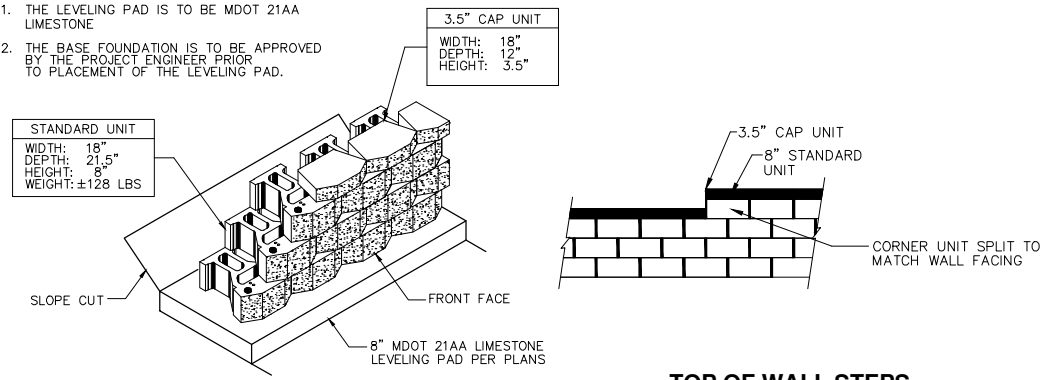
S:\Project Management\Design\2012036 Clogue\Plan Production\Primary\2012036COV.dwg Dwg Created: 29-Nov-12 - 02 standard bw.stb - Plot Date: 17-Jul-14



**LEVELING PAD DETAIL**  
N.T.S.

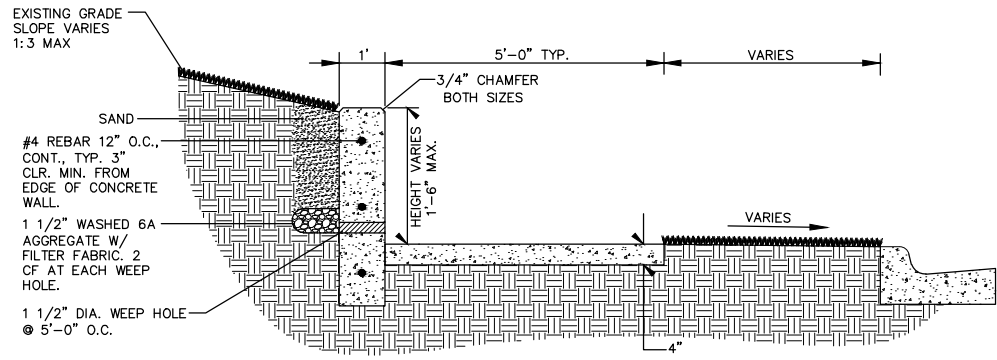
**BASE LEVELING PAD NOTES:**

1. THE LEVELING PAD IS TO BE MDOT 21AA LIMESTONE
2. THE BASE FOUNDATION IS TO BE APPROVED BY THE PROJECT ENGINEER PRIOR TO PLACEMENT OF THE LEVELING PAD.

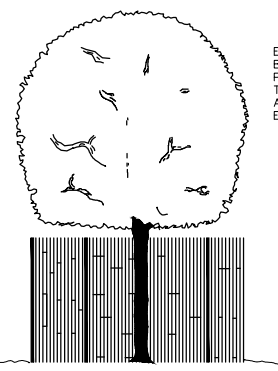


**TOP OF WALL STEPS**  
N.T.S.

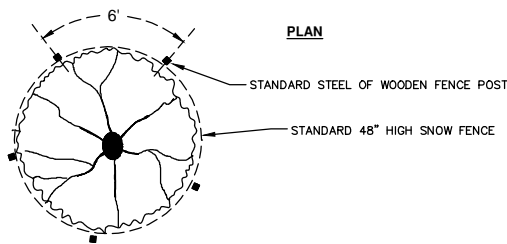
**BLOCK RETAINING WALL, MORTARLESS, UNREINFORCED, MOD.**  
N.T.S.



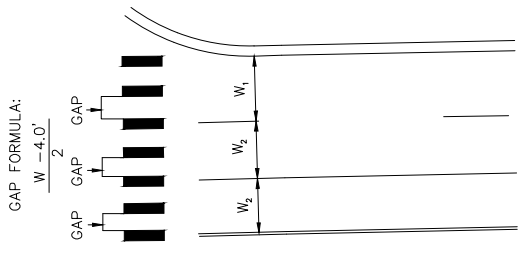
**INTEGRAL SIDEWALK AND RETAINING WALL**  
7" - 18" WALL  
NOT TO SCALE



ELEVATION SNOW FENCE SHALL BE LOCATED AT THE OUTER PERIMETER OF THE SPREAD OF THE BRANCHES OR CLOSER ONLY AT THE DIRECTION OF THE ENGINEER.

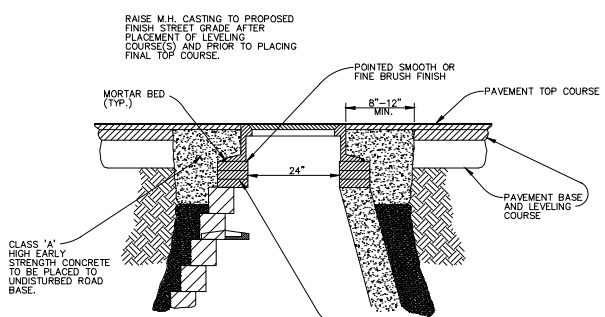


**TREE PROTECTION**

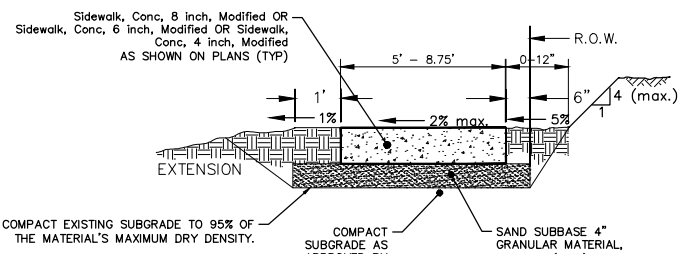


ONE BAR CENTERED ON EACH LANE LINE  
ONE BAR CENTERED BETWEEN EACH LANE LINE  
GAP ON 12.0' LANE = 4.0'  
GAP ON 11.0' LANE = 3.5'

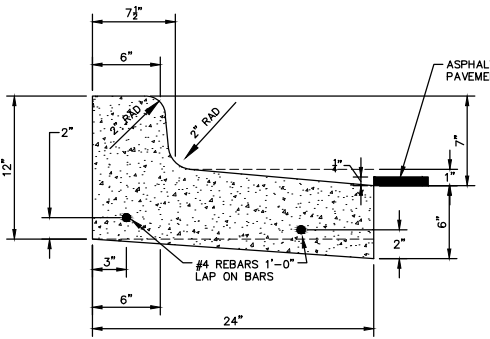
**CROSSWALK DETAIL**



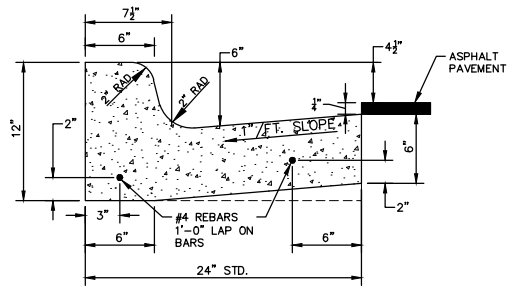
**DR STRUCTURE COVER, ADJ, MODIFIED**



**SIDEWALK TYPICAL SECTION**  
P.O.B. TO P.O.E.



**CURB AND GUTTER, CONC., MOD. SPILL-OUT**



**CURB AND GUTTER, CONC., MOD.**

**PERMITS REQUIRED TO BE OBTAINED BY THE CONTRACTOR PRIOR TO THE BEGINNING OF CONSTRUCTION.**

PERMIT	ISSUING AUTHORITY
LANE CLOSURE PERMIT *	CITY OF ANN ARBOR PROJECT MANAGEMENT UNIT
"NO PARKING" SIGNS PERMIT *	CITY OF ANN ARBOR PROJECT MANAGEMENT UNIT
GRADING/SOIL EROSION & SEDIMENTATION CONTROL PERMIT *	CITY OF ANN ARBOR CUSTOMER SERVICE
RIGHT-OF-WAY PERMIT *	CITY OF ANN ARBOR CUSTOMER SERVICE

\* NO COST TO CONTRACTOR

**CONTACT INFORMATION**

PUBLIC UTILITIES	OWNER	CONTACT
WATER		DAN WOODEN (734) 794-6350
SANITARY	CITY OF ANN ARBOR	MARK COZART (734) 794-6350
STORM	FIELD OPERATIONS SERVICE UNIT	KEVIN ERNST (734) 794-6350
FORESTRY	W.R. WHEELER SERVICE CENTER	STEVE GOEBEL (734) 794-6350
SIGNS	4251 STONE SCHOOL ROAD ANN ARBOR, MI 48108	CHUCK FOJTIK (734) 794-6361
SIGNALS		
STREET LIGHTS		

**EXISTING LEGEND**

- Fire Hydrant
- Gate Valve in Box
- Gate Valve in Well
- Stop Box
- Water Vault
- Well
- Catch Basin (SQ)
- Catch Basin (RD)
- Storm Manhole
- Non-Curb Catch Basin (SQ)
- Sanitary Manhole
- Clean-Out
- Post
- Pedestrian Signal
- Sign
- Hand Hole
- Ornamental Light
- Flood Light
- Unknown Manhole
- Telephone Manhole
- Telephone Riser
- Gas Valve
- Gas Vent
- Gas Box
- Electrical Riser
- Transformer
- Utility Pole
- Lamp Pole
- Guy Anchor
- Guy Pole
- Monitoring Well
- Mailbox
- Soil Boring
- Traverse Point
- Bench Mark
- Iron Pipe
- Man Box

**PROPOSED LEGEND**

- Hydrant (Plan)
- Water Gate Well
- Reducer
- Water Gate Valve
- Water Stop Box
- Water Vault
- Inlet
- Double Inlet
- Inlet Junction Chamber
- Round Catch Basin
- Storm Manhole
- Drain Arrow
- Flared End Section
- Sanitary Manhole
- Clean-Out
- Barrel
- Sign
- Push Button
- Detectable Warning
- Asphalt
- Concrete
- Sidewalk
- Tree (Deciduous)
- Tree (Coniferous)

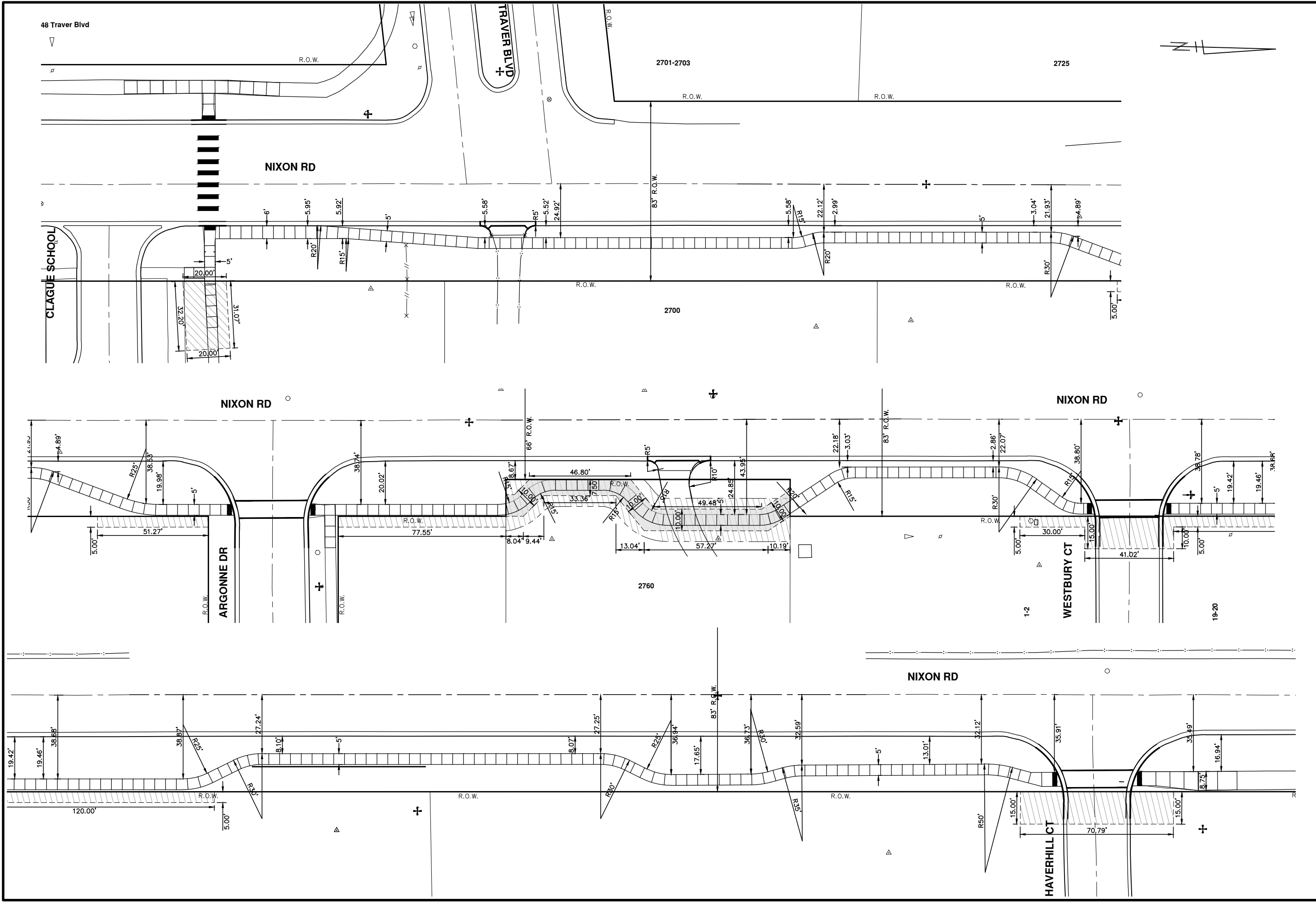
**PROJECT MANAGEMENT - PUBLIC SERVICES - CITY OF ANN ARBOR**

**CLAGUE SAFE ROUTES**

**LEGEND, DETAILS AND NOTES**

SCALE: N.T.S. DRAWING No. 2012036-2 SHEET No. 2 OF 9

S:\Project Management\Design\2012036 Clague\Plan Production\Primary\2012036STKG.dwg Dwg Created: 12-Jan-13 - \_a2 standard bw.stb - Plot Date: 17-Jul-14



**PROJECT MANAGEMENT - PUBLIC SERVICES - CITY OF ANN ARBOR**  
**CLAGUE SAFE ROUTES**  
 LAYOUT PLAN

SCALE PLAN: 1" = 20'

DRAWING No. 2012036-3

SHEET No. 3 OF 9

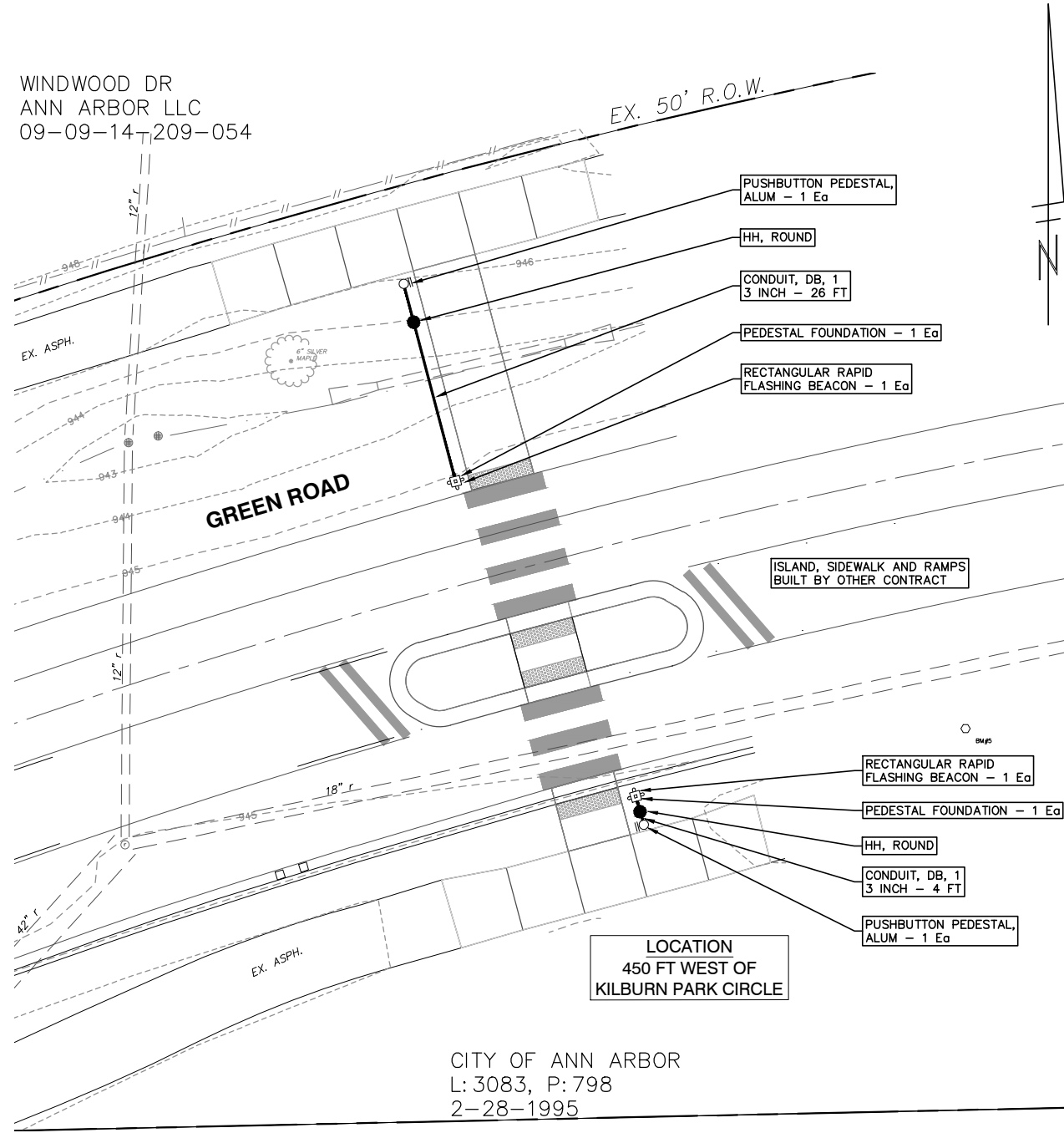
REV.	DESCRIPTION	DATE	DRAWN	PC	CHECKED
1	MOOT G1 SUBMITTAL	3-1-13	DPF		

811 Know what's below. Call before you dig.

CITY OF ANN ARBOR MICHIGAN

S:\Project Management\Design\2012036 Clague\Plan Production\Primary\2012036TSG.dwg Dwg Created: 12-Jun-13 --\_a2 standard bw.stb -- Plot Date: 17-Jul-14

WINDWOOD DR  
ANN ARBOR LLC  
09-09-14-209-054



CITY OF ANN ARBOR  
L: 3083, P: 798  
2-28-1995



REV.	DESCRIPTION	DATE	DRAWN	PC	CHECKED
1	MOOT G1 SUBMITTAL	3-1-13	DPF		

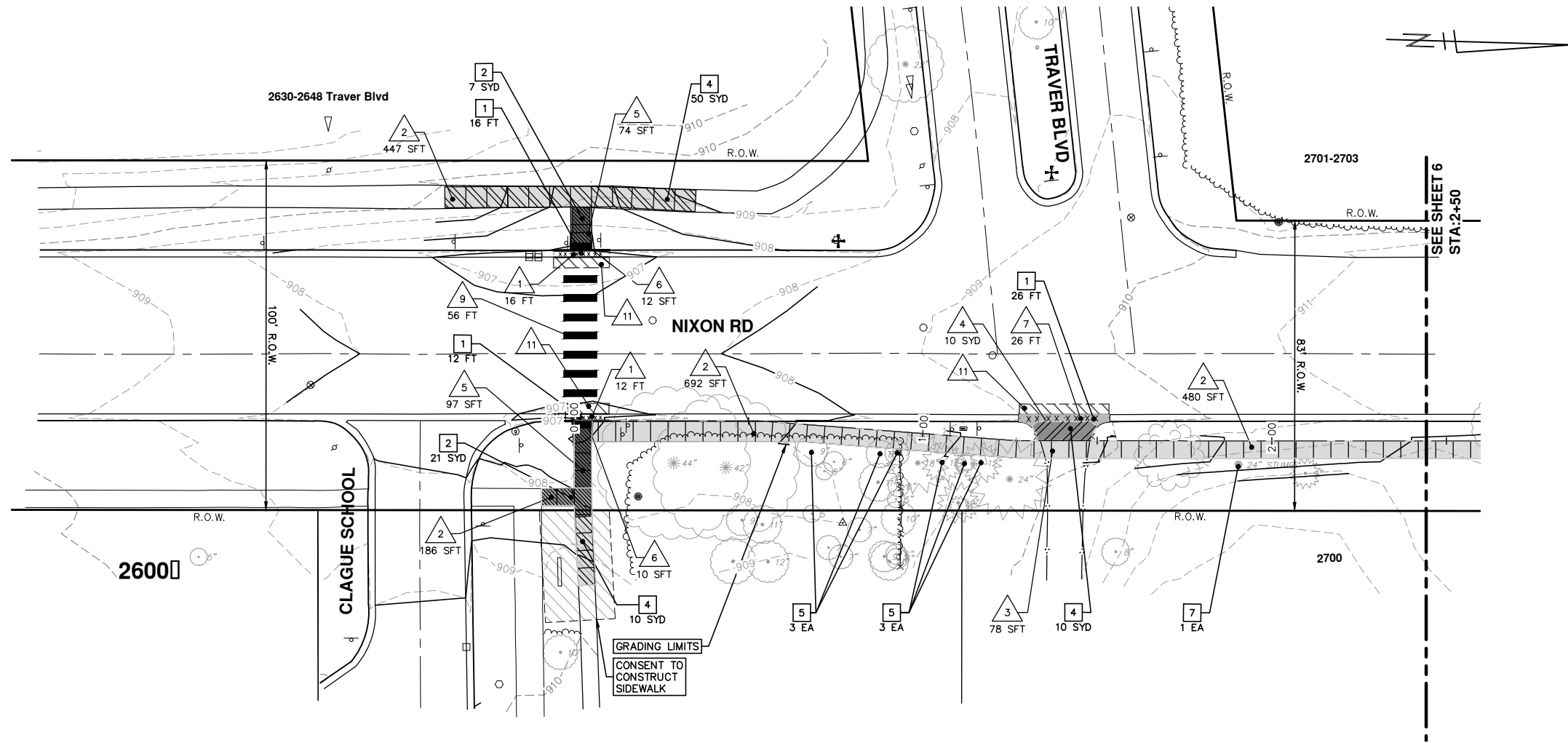
CITY OF ANN ARBOR  
PUBLIC SERVICES  
301 EAST HURON STREET  
ANN ARBOR, MI 48107-8847  
www.a2gov.org



**PROJECT MANAGEMENT - PUBLIC SERVICES - CITY OF ANN ARBOR**  
**CLAGUE SAFE ROUTES**  
GREEN ROAD  
RECTANGULAR RAPID FLASHING BEACON

SCALE PLAN: 1:10  
DRAWING No.  
2012036-4

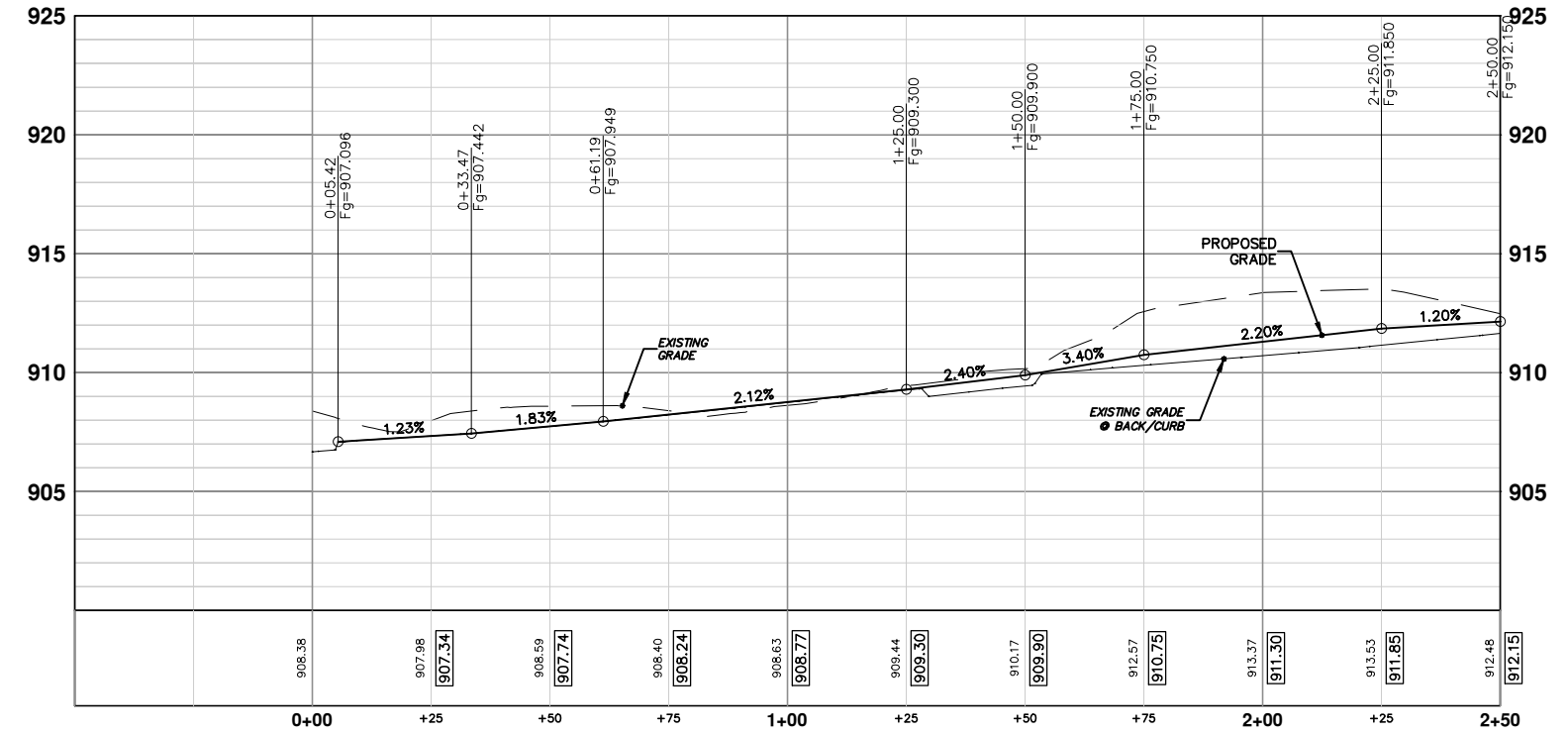
S:\Project Management\Design\2012036 Clague\Plan Production\Primary\2012036PSW.dwg Dwg Created: 28-Nov-12 - \_a2 standard bw.stb - Plot Date: 17-Jul-14



REMOVAL KEY	
KEY	DESCRIPTION
1	CURB AND GUTTER, REMOVAL
2	SIDEWALK, REMOVAL
3	PAVEMENT, REMOVAL
4	HMA SURFACE, REMOVAL
5	TREE, REM, 6 TO 18 INCH
6	TREE, REM, 19 TO 36 INCH
7	STUMP, REM, 19 TO 36 INCH

CONSTRUCTION KEY	
KEY	DESCRIPTION
1	PLACE SPILL-OUT MOUNTABLE CURB AND GUTTER, CONCRETE, MODIFIED
2	PLACE SIDEWALK, CONCRETE, 4 INCH, SPECIAL
3	PLACE SIDEWALK, CONCRETE, 6 INCH, SPECIAL
4	PLACE DRIVEWAY, NON REINFORCED, CONCRETE, 6 INCH
5	SIDEWALK RAMP, CONCRETE, 6 INCH MODIFIED
6	DETECTABLE WARNING SURFACE, MODIFIED
7	DRIVE OPENING, CONCRETE, DET M
8	SIDEWALK RETAINING WALL, 7 TO 18 INCH
9	PLACE PAVEMENT MARKING, OVERLAY COLD PLASTIC, 24 INCH, CROSSWALK
10	PLACE PAVEMENT MARKING, OVERLAY COLD PLASTIC, 6 INCH, CROSSWALK
11	HAND PATCHING
12	DR STRUCTURE COVER, ADJ, CASE 1
13	DR STRUCTURE COVER, ADJ, CASE 2
14	DR STRUCTURE COVER B, TYPE M1
15	TSUGA CANADESIS, 6 FT.
16	VIBURNUM CARLESII, #5 CONT.
17	FORSYTHIA X INTERMEDIA 'LYNWOOD GOLD', #5 CONT.
18	HYDRANGEA PANICULATA 'LIMELIGHT', #5 CONT.
19	VIBURNUM BURKWOODII, #5 CONT.

**NIXON SIDEWALK**



**PROJECT MANAGEMENT - PUBLIC SERVICES - CITY OF ANN ARBOR**

CLAGUE SAFE ROUTES

NIXON ROAD SIDEWALK PLAN AND PROFILE

SCALE PLAN: 1" = 20'  
PROFILE: 1" = 4'

DRAWING No. 2012036-5

SHEET No.

STA. 0+00 TO STA. 2+50

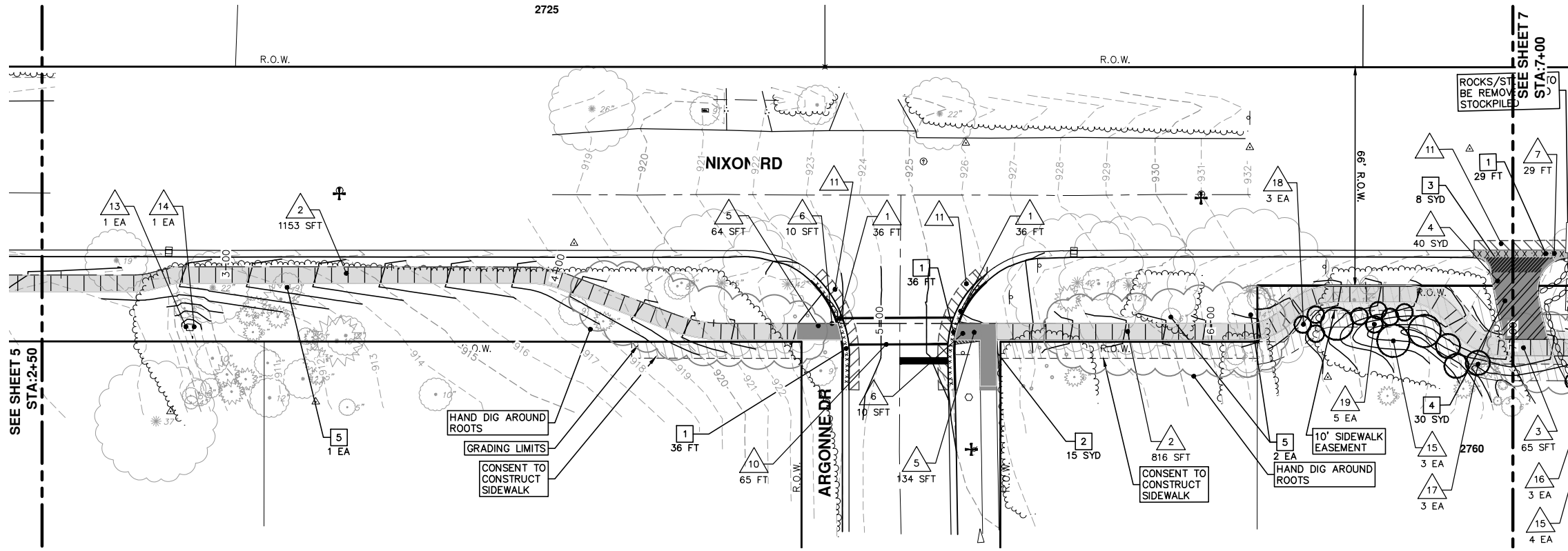
5 OF 9

CITY OF ANN ARBOR  
PUBLIC SERVICES  
301 EAST HURON STREET  
ANN ARBOR, MI 48107-8847  
www.a2gov.org

REV.	DATE	DESCRIPTION	DRAWN	CHECKED	PC
1	3-1-13	MOOT G. SUBMITTAL	DPF		

**811**  
Know what's below.  
Call before you dig.

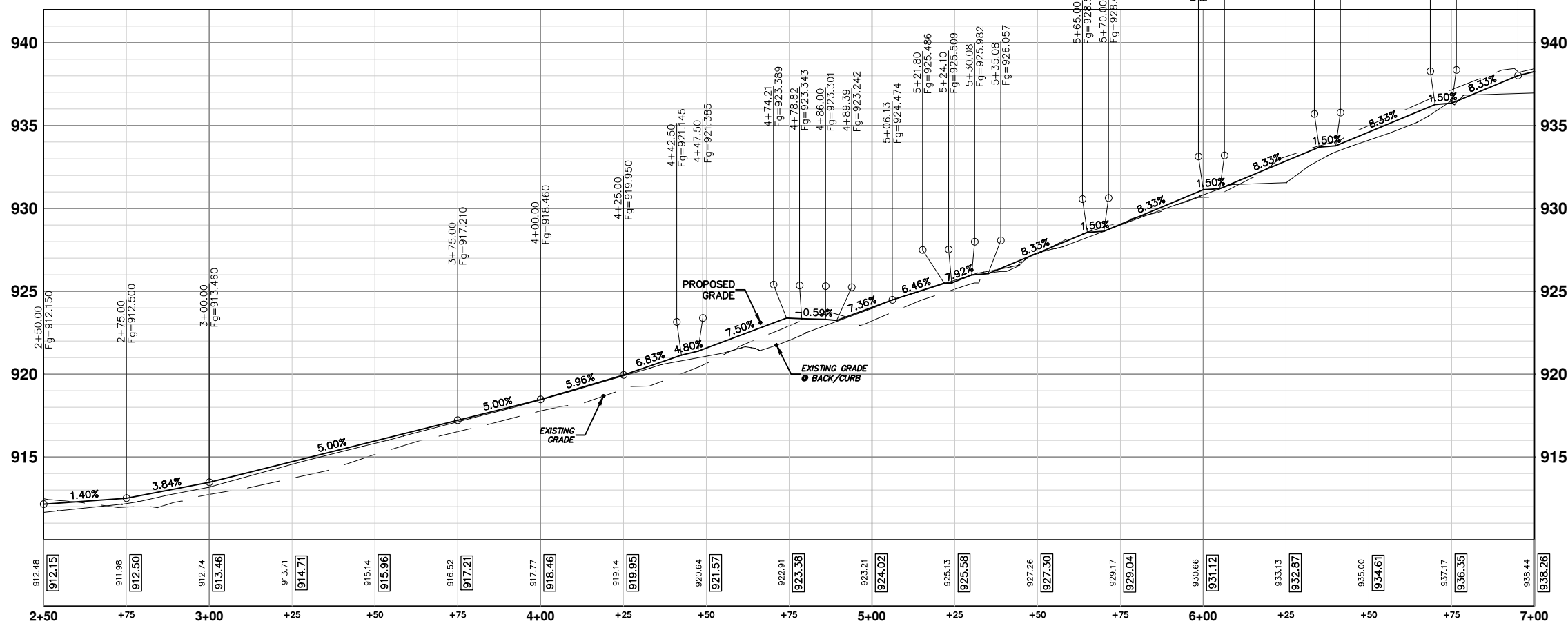
S:\Project Management\Design\2012036 Clogue\Plan Production\Primary\2012036PSW.dwg Dwg Created: 28-Nov-12 - \_a2 standard bw.stb - Plot Date: 17-Jul-14



REMOVAL KEY	
KEY	DESCRIPTION
1	CURB AND GUTTER, REMOVAL
2	SIDEWALK, REMOVAL
3	PAVEMENT, REMOVAL
4	HMA SURFACE, REMOVAL
5	TREE, REM, 6 TO 18 INCH
6	TREE, REM, 19 TO 36 INCH
7	STUMP, REM, 19 TO 36 INCH

CONSTRUCTION KEY	
KEY	DESCRIPTION
1	PLACE SPILL-OUT MOUNTABLE CURB AND GUTTER, CONCRETE, MODIFIED
2	PLACE SIDEWALK, CONCRETE, 4 INCH, SPECIAL
3	PLACE SIDEWALK, CONCRETE, 6 INCH, SPECIAL
4	PLACE DRIVEWAY, NON REINFORCED, CONCRETE, 6 INCH
5	SIDEWALK RAMP, CONCRETE, 6 INCH MODIFIED
6	DETECTABLE WARNING SURFACE, MODIFIED
7	DRIVE OPENING, CONCRETE, DET M
8	SIDEWALK RETAINING WALL, 7 TO 18 INCH
9	PLACE PAVEMENT MARKING, OVERLAY COLD PLASTIC, 24 INCH, CROSSWALK
10	PLACE PAVEMENT MARKING, OVERLAY COLD PLASTIC, 6 INCH, CROSSWALK
11	HAND PATCHING
12	DR STRUCTURE COVER, ADJ, CASE 1
13	DR STRUCTURE COVER, ADJ, CASE 2
14	DR STRUCTURE COVER B, TYPE M1
15	TSUGA CANADESIS, 6 FT.
16	VIBURNUM CARLESII, #5 CONT.
17	FORSYTHIA X INTERMEDIA 'LYNWOOD GOLD', #5 CONT.
18	HYDRANGEA PANICULATA 'LIMELIGHT', #5 CONT.
19	VIBURNUM BURKWOODII, #5 CONT.

### NIXON SIDEWALK



**PROJECT MANAGEMENT - PUBLIC SERVICES - CITY OF ANN ARBOR**

CLAGUE SAFE ROUTES

NIXON ROAD SIDEWALK PLAN AND PROFILE

SCALE PLAN: 1" = 20'  
PROFILE: 1" = 4'

DRAWING No. 2012036-6

SHEET No. 6 OF 9

STA. 2+50 TO STA. 7+00

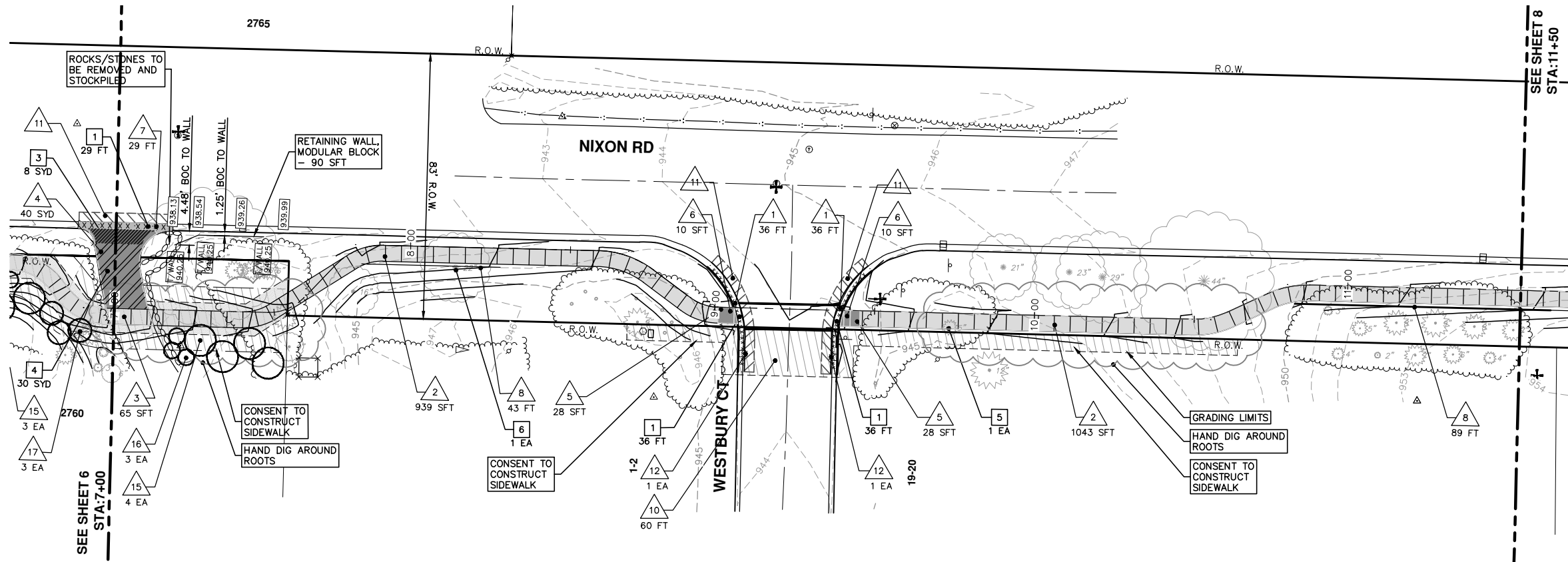
REV. 1 MOOT GR SUBMITTAL 3-1-13 DATE DRAWN PC CHECKED

1 DPF 3-1-13 DATE DRAWN PC CHECKED

1 MOOT GR SUBMITTAL 3-1-13 DATE DRAWN PC CHECKED

CITY OF ANN ARBOR  
PUBLIC SERVICES  
301 EAST HURON STREET  
ANN ARBOR, MI 48107-8847  
www.a2gov.org

S:\Project Management\Design\2012036 Clague\Plan Production\Primary\2012036PSW.dwg Dwg Created: 28-Nov-12 - \_o2 standard bw.stb - Plot Date: 17-Jul-14

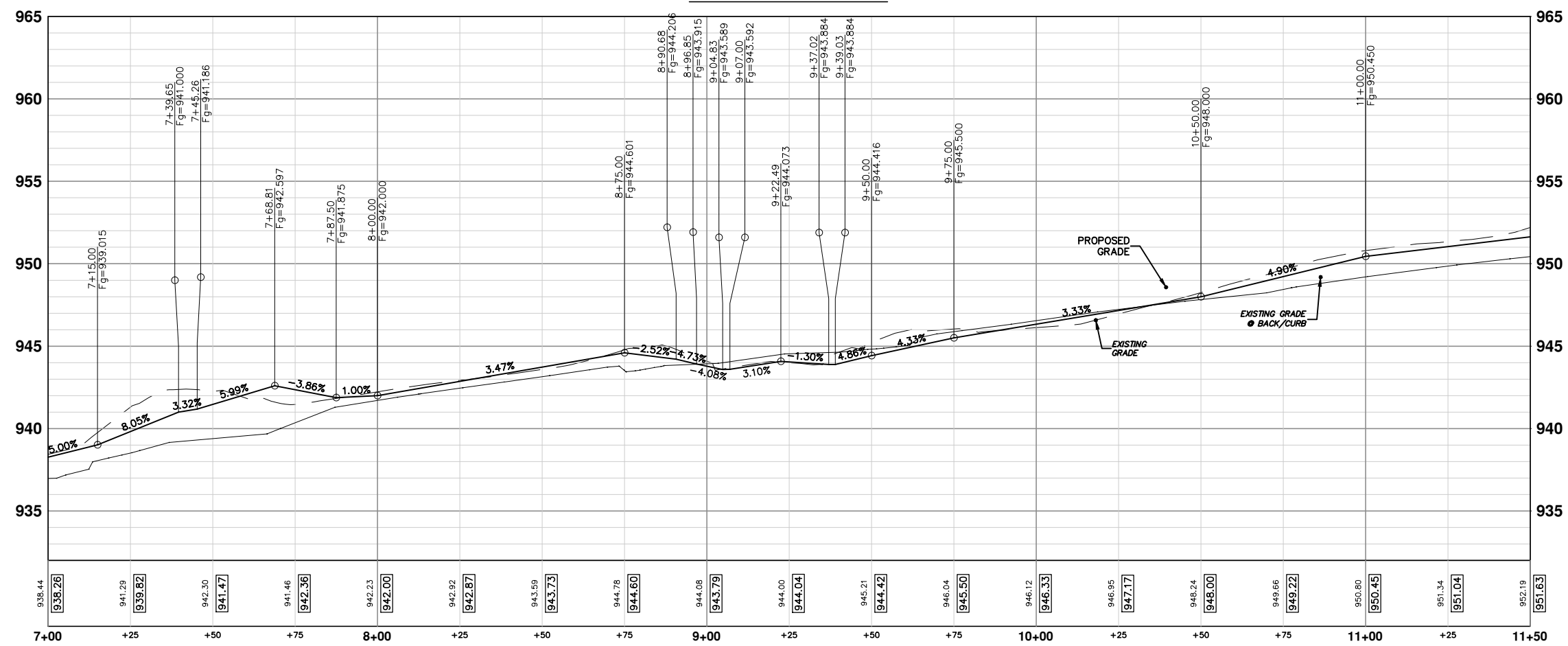



SEE SHEET 8  
STA:11+50

REMOVAL KEY	
KEY	DESCRIPTION
1	CURB AND GUTTER, REMOVAL
2	SIDEWALK, REMOVAL
3	PAVEMENT, REMOVAL
4	HMA SURFACE, REMOVAL
5	TREE, REM, 6 TO 18 INCH
6	TREE, REM, 19 TO 36 INCH
7	STUMP, REM, 19 TO 36 INCH

CONSTRUCTION KEY	
KEY	DESCRIPTION
1	PLACE SPILL-OUT MOUNTABLE CURB AND GUTTER, CONCRETE, MODIFIED
2	PLACE SIDEWALK, CONCRETE, 4 INCH, SPECIAL
3	PLACE SIDEWALK, CONCRETE, 6 INCH, SPECIAL
4	PLACE DRIVEWAY, NON REINFORCED, CONCRETE, 6 INCH
5	SIDEWALK RAMP, CONCRETE, 6 INCH MODIFIED
6	DETECTABLE WARNING SURFACE, MODIFIED
7	DRIVE OPENING, CONCRETE, DET M
8	SIDEWALK RETAINING WALL, 7 TO 18 INCH
9	PLACE PAVEMENT MARKING, OVERLAY COLD PLASTIC, 24 INCH, CROSSWALK
10	PLACE PAVEMENT MARKING, OVERLAY COLD PLASTIC, 6 INCH, CROSSWALK
11	HAND PATCHING
12	DR STRUCTURE COVER, ADJ, CASE 1
13	DR STRUCTURE COVER, ADJ, CASE 2
14	DR STRUCTURE COVER B, TYPE M1
15	TSUGA CANADESIS, 6 FT.
16	VIBURNUM CARLESII, #5 CONT.
17	FORSYTHIA X INTERMEDIA 'LYNWOOD GOLD', #5 CONT.
18	HYDRANGEA PANICULATA 'LIMELIGHT', #5 CONT.
19	VIBURNUM BURKWOODII, #5 CONT.


**NIXON SIDEWALK**





Know what's below.  
Call before you dig.

REV.	1	MOOT. G. SUBMITTAL	DESCRIPTION	DATE	3-1-13	DPF	DRAWN	PC	CHECKED

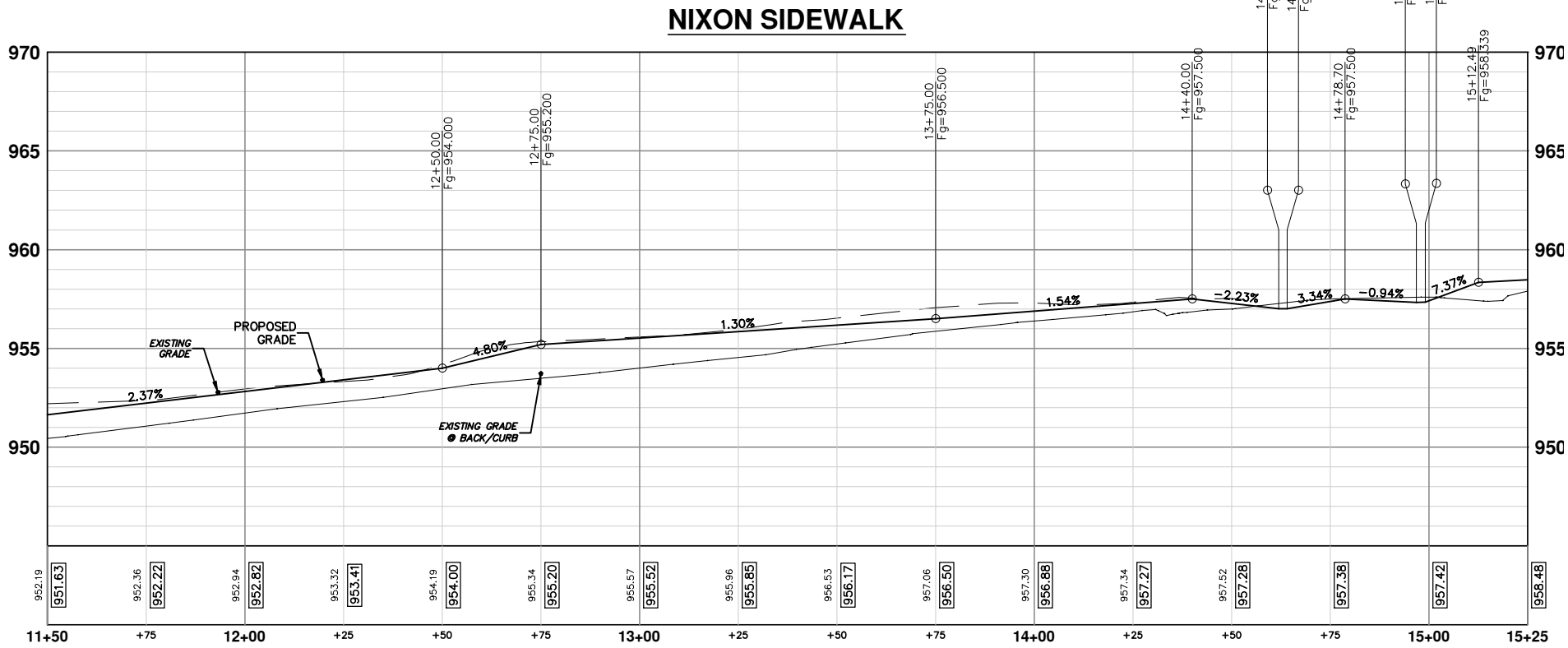
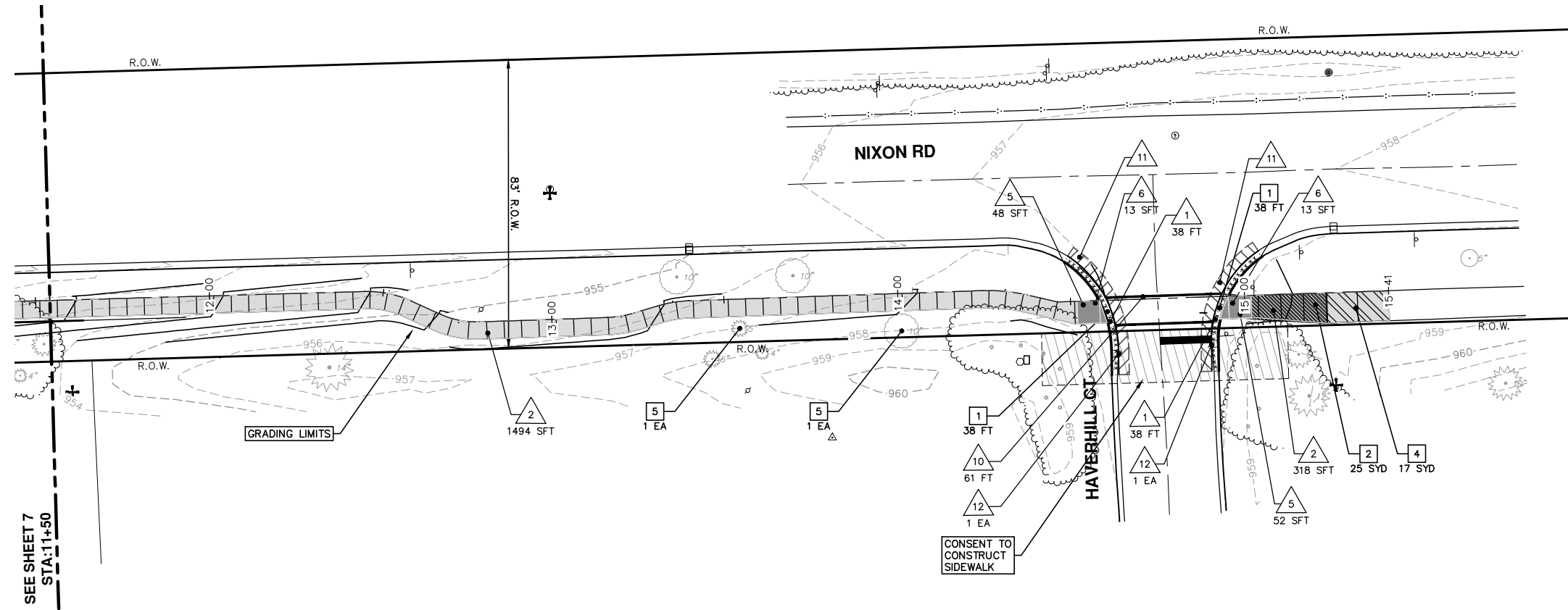


CITY OF ANN ARBOR  
PUBLIC SERVICES  
301 EAST HURON STREET  
ANN ARBOR, MI 48107-8847  
www.a2gov.org

**PROJECT MANAGEMENT - PUBLIC SERVICES - CITY OF ANN ARBOR**  
**CLAGUE SAFE ROUTES**  
 NIXON ROAD SIDEWALK PLAN AND PROFILE  
 STA. 7+00 TO STA. 11+50

SCALE PLAN: 1" = 20'  
 PROFILE: 1" = 4'  
 DRAWING No. 2012036-7  
 SHEET No. 7 OF 9

S:\Project Management\Design\2012036 Clogue\Plan Production\Primary\2012036PSW.dwg Dwg Created: 28-Nov-12 \_a2 standard bw.stb - Plot Date: 17-Jul-14



REMOVAL KEY	
KEY	DESCRIPTION
1	CURB AND GUTTER, REMOVAL
2	SIDEWALK, REMOVAL
3	PAVEMENT, REMOVAL
4	HMA SURFACE, REMOVAL
5	TREE, REM, 6 TO 18 INCH
6	TREE, REM, 19 TO 36 INCH
7	STUMP, REM, 19 TO 36 INCH

CONSTRUCTION KEY	
KEY	DESCRIPTION
1	PLACE SPILL-OUT MOUNTABLE CURB AND GUTTER, CONCRETE, MODIFIED
2	PLACE SIDEWALK, CONCRETE, 4 INCH, SPECIAL
3	PLACE SIDEWALK, CONCRETE, 6 INCH, SPECIAL
4	PLACE DRIVEWAY, NON REINFORCED, CONCRETE, 6 INCH
5	SIDEWALK RAMP, CONCRETE, 6 INCH MODIFIED
6	DETECTABLE WARNING SURFACE, MODIFIED
7	DRIVE OPENING, CONCRETE, DET M
8	SIDEWALK RETAINING WALL, 7 TO 18 INCH
9	PLACE PAVEMENT MARKING, OVERLAY COLD PLASTIC, 24 INCH, CROSSWALK
10	PLACE PAVEMENT MARKING, OVERLAY COLD PLASTIC, 6 INCH, CROSSWALK
11	HAND PATCHING
12	DR STRUCTURE COVER, ADJ, CASE 1
13	DR STRUCTURE COVER, ADJ, CASE 2
14	DR STRUCTURE COVER B, TYPE M1
15	TSUGA CANADESIS, 6 FT.
16	VIBURNUM CARLESIS, #5 CONT.
17	FORSYTHIA X INTERMEDIA 'LYNWOOD GOLD', #5 CONT.
18	HYDRANGEA PANICULATA 'LIMELIGHT', #5 CONT.
19	VIBURNUM BURKWOODII, #5 CONT.



REV.	DESCRIPTION	DATE	DRAWN	PC	CHECKED
1	MOOT G SUBMITTAL	3-1-13	DPF		

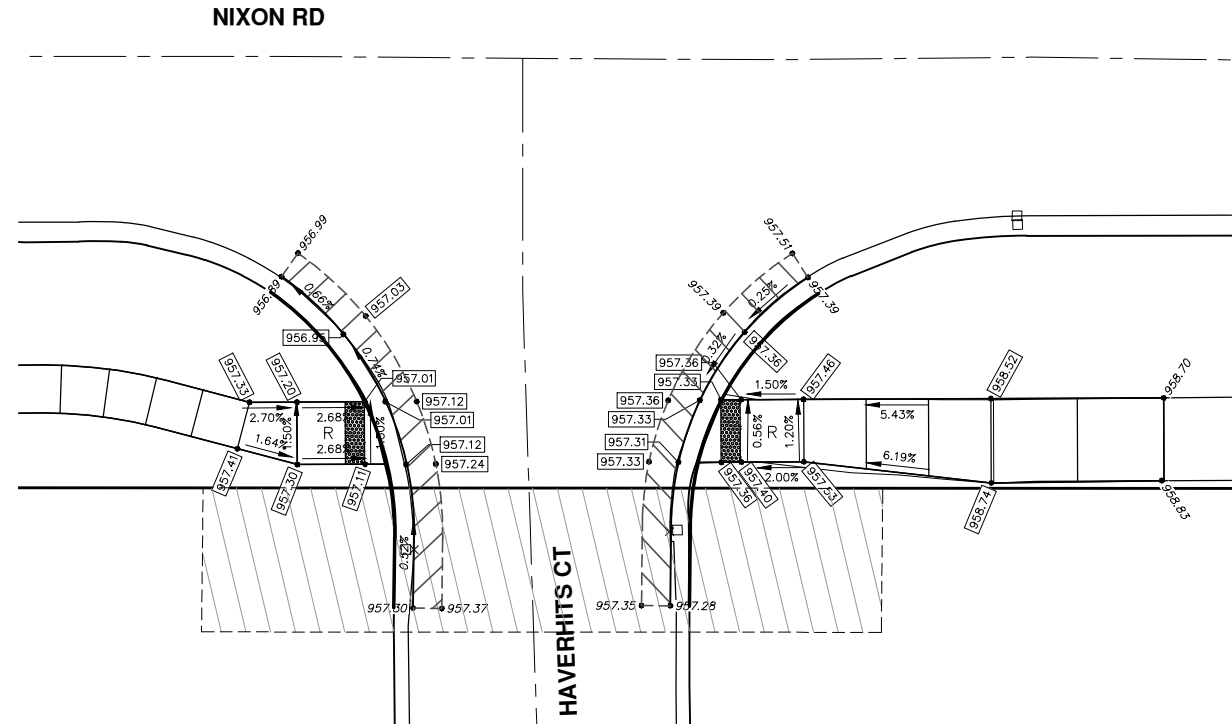
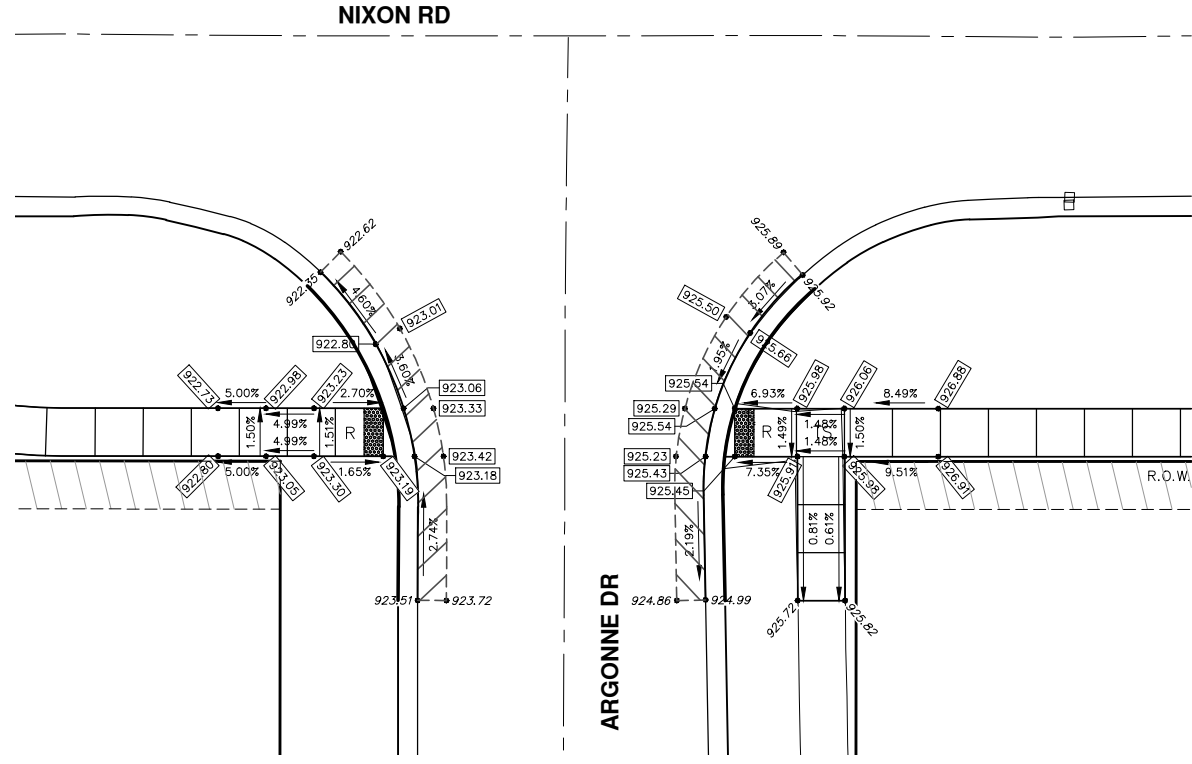
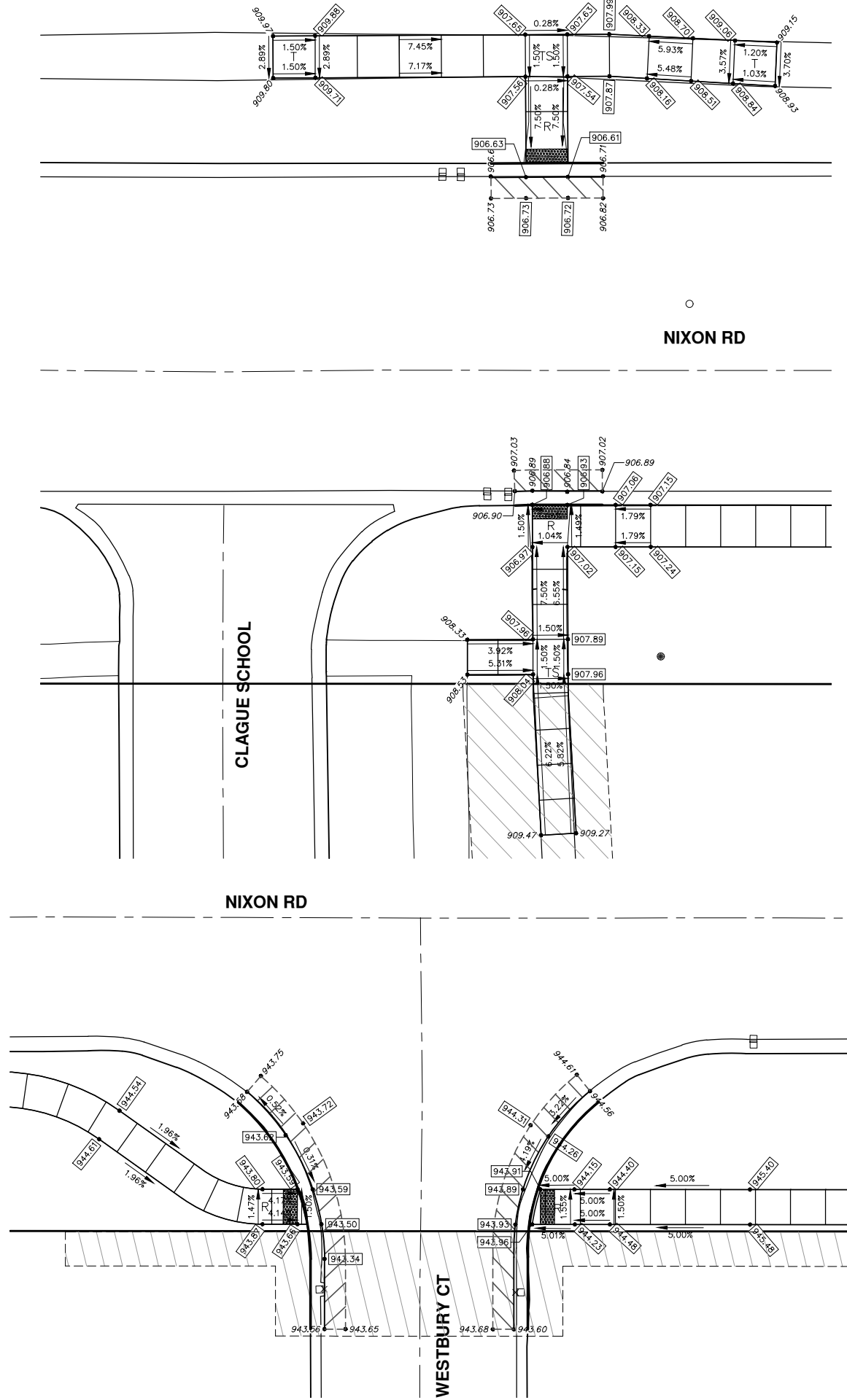
CITY OF ANN ARBOR  
 PUBLIC SERVICES  
 301 EAST HURON STREET  
 ANN ARBOR, MI 48107-8847  
 www.a2gov.org

**PROJECT MANAGEMENT - PUBLIC SERVICES - CITY OF ANN ARBOR**  
**CLAGUE SAFE ROUTES**  
 NIXON ROAD SIDEWALK PLAN AND PROFILE  
 STA. 11+50 TO STA. 28+15

PROFILE: 1" = 4'  
 SCALE PLAN: 1" = 20'  
 DRAWING No.  
 2012036-8



S:\Project Management\Design\2012036 Clague\Plan Production\Primary\2012036INT.dwg Dwg Created: 29-Nov-12 \_a2 standard bw.stb - Plot Date: 17-Jul-14



REV.	DESCRIPTION	DATE	DRAWN	PC	CHECKED
1	MOOT GI SUBMITTAL	3-1-13	DPF		

CITY OF ANN ARBOR  
 PUBLIC SERVICES  
 301 EAST HURON STREET  
 ANN ARBOR, MI 48107-8647  
 www.a2gov.org



PROJECT MANAGEMENT - PUBLIC SERVICES - CITY OF ANN ARBOR  
 CLAGUE SAFE ROUTES  
 RAMP GRADING  
 TRAVER BLVD., ARGONNE DR., WESTBURY CT., HAVERHILLS CT.

SCALE PLAN: 1" = 10'  
 DRAWING No.  
 2012036-9