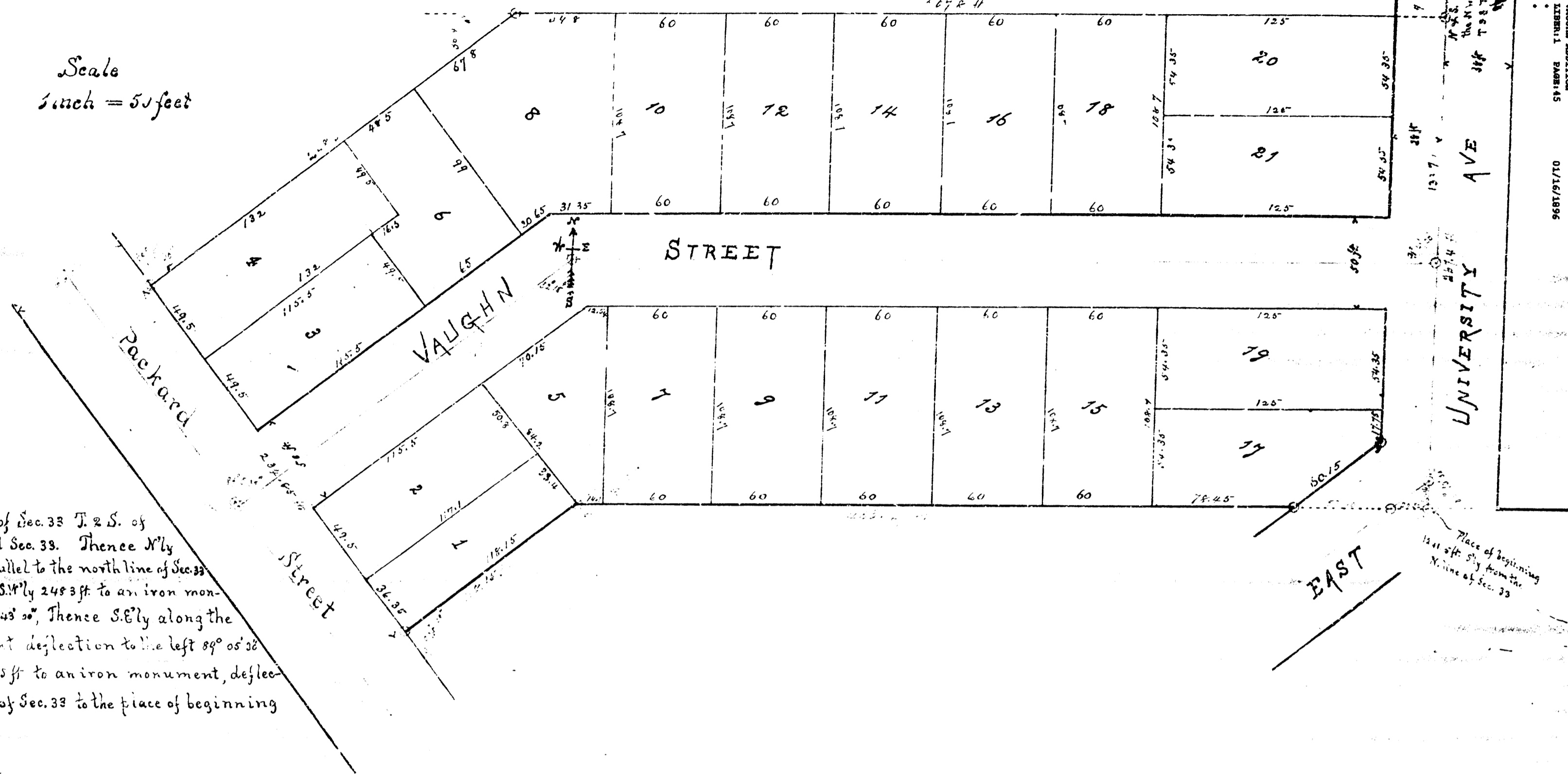


# PLAT OF THE VAUGHN ADDITION TO THE CITY OF ANN ARBOR

Scale  
1 inch = 50 feet



### Description

Beginning at a point on the N<sup>W</sup> 1/4 of Sec. 33 T. 2 S. of R. 6 E. Meridian of Michigan 1241.50 ft. S<sup>ly</sup> from the north line of said Sec. 33. Thence N<sup>ly</sup> 267.4 ft. on the N<sup>W</sup> 1/4 line to an iron monument, thence N<sup>ly</sup> parallel to the north line of Sec. 33 567.2 ft. to an iron monument, deflection to the left 9° 40' 00". Thence S<sup>ly</sup> 248.3 ft. to an iron monument in the northeast line of Packard St. deflection to the left 36° 43' 00". Thence S. E<sup>ly</sup> along the northeast line of Packard 234.83 ft. to an iron monument, deflection to the left 89° 05' 38". Thence N. S<sup>ly</sup> parallel to the south end of E. Univ. by Ave. 118.15 ft. to an iron monument, deflection to the left 9° 40' 00". Thence E<sup>ly</sup> parallel to the north line of Sec. 33 to the place of beginning 466.47 ft., deflection to the right 35° 10' 00".

### Surveyor's Certificate

I hereby certify that the plat hereon delineated is a correct one and that permanent monuments consisting of iron pipes have been placed as hereon shown at the angles in the boundary and at street intersections at points marked thus

George F. Key, Surveyor.

### Dedication

Know all men by these presents that Sarah F. Vaughn, proprietor, has caused the land embraced in the annexed plat, to be surveyed, laid out and platted as herein shown, the streets being for public use this plat to be known as the "Vaughn Addition to the City of Ann Arbor."

Signed and sealed in presence of  
H. W. Hamman

Sarah F. Vaughn

### Acknowledgment

State of Michigan }  
County of Washtenaw }  
On this 22<sup>nd</sup> day of July 1895 before me a notary public in and for said county, personally appeared the above named Sarah F. Vaughn known to me to be the person who executed the above dedication and acknowledged the same to be her free act and deed

Wm. D. Hamman, Notary Public.

### Approval

This plat was examined and approved by the Board of Public Works of the city of Ann Arbor July 24<sup>th</sup> 1895

Oliver Mills, City Clerk.

Examined and Approved

Sept 16 1895  
George F. Key  
Deputy Auditor Gen.

State of Michigan }  
County of Washtenaw }

Register of Deeds and  
I hereby certify that we have even carefully compared this copy with the original plat of the "Vaughn Addition to the City of Ann Arbor" and that it is an exact copy thereof and of the whole of such map or plat.

George F. Key, Surveyor.

Registers Office Washtenaw County, D.S.  
This is to certify that this plat was filed in this office at 2:30 o'clock P.M. of the 16<sup>th</sup> day of January A.D. 1896. in plat book No. 1 at page 45.

Register of Deeds

