

Examined and Approved
AUG 7-1914

Part 1 of Survey DESCRIPTION

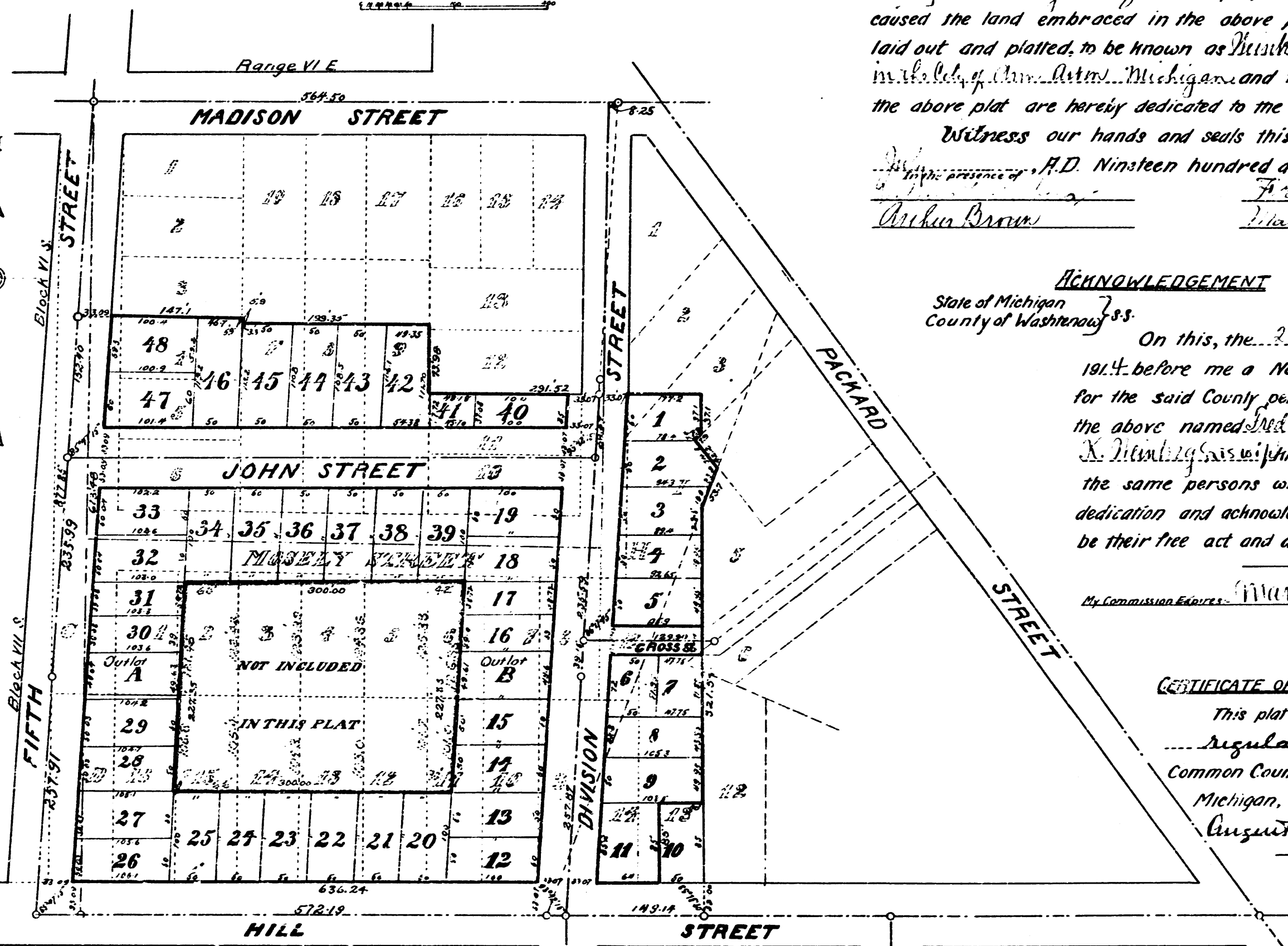
The land included in the annexed plat of Weinberg's Sub-division in the City of Ann Arbor, Washtenaw County, Michigan, is described as follows: A portion of Maynard and Morgan's Addition to the City of Ann Arbor, Washtenaw County, Michigan, according to the official plat thereof recorded in the Office of Registrar of Deeds for the said County of Washtenaw on pages 572, 573, and 574 of Liber 45 of Deeds; being all of Block 7, Range 6 East except part of lots 2, 3, 4, 5, 6, 11, 12, 13, 14, and 15 indicated as "Not included in this plat", also all of Block 6 South, Range 6 East except lots 1, 2, 3, 12, 13, 14, 15, 16, 17, 18, 19; except also that portion of Lots 7, 8 and 9 lying north of the center line of said block; including all of Lots E, H and I, and the South rod of Lot H; including also that portion of Division Street lying South of the South line of Lot 12, and that portion of Mosely Street lying east of the east line of Fifth Street as shown on said plat, including also a strip of land, being that portion of Fifth Street and Mosely Street and of Lots C and D as shown on said plat lying east of the present east line of Fifth Street, said strip being 12.77 feet wide on the south line of Lot 3 extended, and 46.57 feet wide measured on the north line of Hill Street.

Also a portion of Weller's Addition to the City of Ann Arbor, Washtenaw County, Michigan, according to the official plat thereof in the office of the Registrar of Deeds for the said County of Washtenaw on Page 374 of Liber 60 of Deeds, being all of Lots 13 and 14, except the South 85 feet of the east 50 feet of Lot 13, and that portion of Lots 5 and 6 lying West of the east line of Lot 13 produced Northerly; also that portion of Lots 2 and 3 bounded on the North by a line parallel to the South line of Lot 3 and distant 50 feet therefrom, and on the East by a line parallel to the West line of lots 2 and 3 and distant 79.27 feet therefrom. All of which is a part of the S.E. 1/4 of Sec. 29, T. 2 S. 17. 6 E.

Note:- Lot Numbers of Original Plats in open-face figures, thus - "13"
All dimensions given in feet.

WEINBERG'S SUB-DIVISION IN THE CITY OF ANN ARBOR MICH

PLATTED ON A SCALE OF 100 FEET TO 1 INCH



DEDICATION

Know all men by these presents that Fred C. Weinberg and Mary K. Weinberg his wife, as proprietors, have caused the land embraced in the above plat to be surveyed, laid out and platted, to be known as Weinberg's Sub-Division in the City of Ann Arbor, Michigan, and the streets shown on the above plat are hereby dedicated to the use of the public.

Witness our hands and seals this 30th day of July, 1914, in the presence of A.D. Nineteen hundred and fourteen.
Fred C. Weinberg
Mary K. Weinberg

ACKNOWLEDGEMENT

State of Michigan
County of Washtenaw
On this, the 30th day of July, 1914, before me a Notary Public in and for the said County personally appeared the above named Fred C. Weinberg and Mary K. Weinberg his wife known by me to be the same persons who executed the above dedication and acknowledged the same to be their free act and deed.
Arthur Brown
Notary Public, Washtenaw County
My Commission Expires March 15, 1915

CERTIFICATE OF APPROVAL

This plat was approved on a regular meeting of the Common Council, City of Ann Arbor, Michigan, the 3rd day of August, 1914.
Rose Grauer
Clerk

CERTIFICATE

I hereby certify that the plat hereon delineated is a correct one and that permanent monuments consisting of iron pipe, with brick and stone have been placed at points marked thus: o, as thereon shown, and of iron pipe at all angles in the boundaries of the land platted, and at all intersections of streets, or streets and alleys.

CERTIFICATE OF RECORD

Register's Office
Washtenaw County
Received for Record... day of October, 1914, at 10 o'clock A.M. and Recorded in Liber 3 of Plats, on page 8.
H. C. Dean
Registrar

TAX CERTIFICATE

Office of County Treasurer
Washtenaw County
I hereby certify that there are no tax liens or titles held by the State on the lands described in this plat, and that there are no tax liens or titles held by individuals on said lands, and that the taxes on said lands for the five years preceding the 1st day of July, 1914, are all paid, as shown by the records of this office.

CERTIFICATE OF APPROVAL

This plat was approved at a regular meeting of the Board of Public Works, City of Ann Arbor, Michigan, the 8th day of July, 1914.
Rose Grauer
Clerk

FILED/80/01
100
1