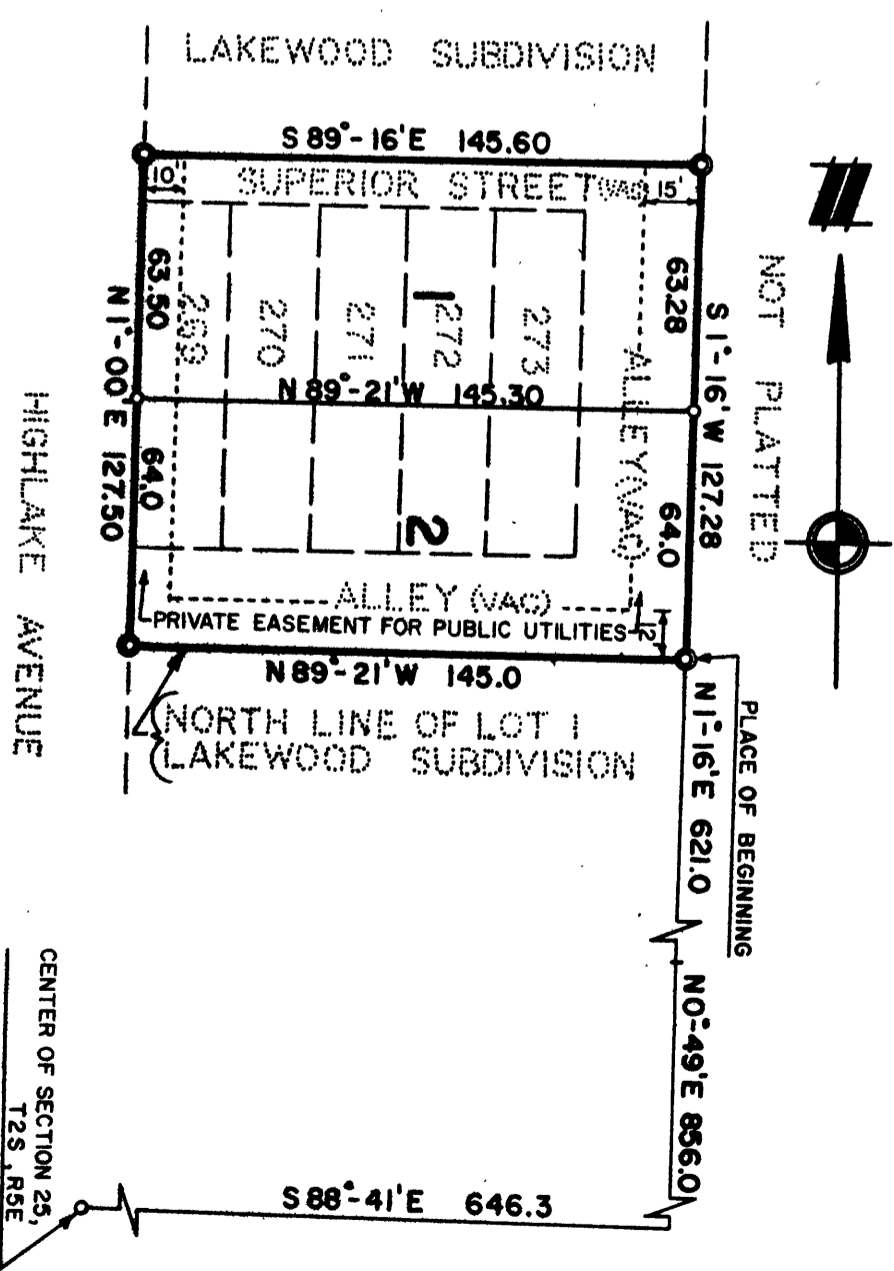


NIKLOS SUBDIVISION
 COPY
 A SUBDIVISION OF PART OF THE NE 1/4 OF SECTION 25,
 T2S, R5E, CITY OF ANN ARBOR, WASHTEENAW COUNTY,
 MICHIGAN, BEING A REPLAT OF LOTS 269 THRU 273
 INCLUSIVE AND OTHER LAND IN LAKEWOOD SUBDIVISION



ALL DIMENSIONS IN FEET AND DECIMALS THEREOF
 SURVEY BY ATWELL-HICKS, INC.



DEDICATION

KNOW ALL MEN BY THESE PRESENTS, that we, Niklos Weber Jr as proprietor and Virginia R. Weber his wife, have caused the land embraced in the annexed plat to be surveyed, laid out and platted, to be known as NIKLOS SUBDIVISION a subdivision of part of the NE 1/4 of Section 25, T2S, R5E, City of Ann Arbor, Washtenaw County, Michigan, being a replat of Lots 269 thru 273 inclusive and other land in Lakewood Subdivision and that the easements indicated on said plat are not dedicated to the public but reserved for public utilities and any other use designated hereon and no permanent structures are to be located within said easement.

Signed in the Presence of:
 Douglass V. Wilson, Witness
 Barbara J. Gordon, Witness
 Niklos Weber Jr, 3204 Sunnywood, Ann Arbor, Michigan
 Virginia R. Weber, 3204 Sunnywood, Ann Arbor, Michigan

ACKNOWLEDGMENT

STATE OF MICHIGAN) ss.
 County of Washtenaw)
 On this 14th day of April, 1984, before me, a Notary Public in and for said county, personally came the above named Niklos Weber Jr and Virginia R. Weber his wife, known to me to be the persons who executed the above dedication, and acknowledged the same to be their free act and deed.

Barbara J. Gordon
 Notary Public, Washtenaw County, Michigan
 My Commission expires April 15, 1984

DESCRIPTION OF LAND PLATTED

The land embraced in the annexed plat of NIKLOS SUBDIVISION a subdivision of part of the NE 1/4 of Section 25, T2S, R5E, City of Ann Arbor, Washtenaw County, Michigan, being a replat of Lots 269 thru 273 inclusive and other land in Lakewood Subdivision is described as follows:
 Commencing at the center of Section 25, T2S, R5E, City of Ann Arbor, Washtenaw County, Michigan; thence S 89° -41' E 646.3 feet along the south line of Lakewood Subdivision as recorded in Liber 6 of Plats, page 12, Washtenaw County Records, Washtenaw County, Michigan; thence N 0° -49' E 856.0 feet along the east line of said Lakewood Subdivision; thence continuing along the east line of said Lakewood Subdivision N 1° -16' E 621.0 feet to the NE corner of Lot 1 of said Lakewood Subdivision for a PLACE OF BEGINNING; thence N 89° -21' W 145.0 feet; thence N 1° -00' E 127.50 feet; thence S 89° -16' E 145.60 feet; thence S 1° -16' W 127.28 feet along the east line of said Lakewood Subdivision to the Place of Beginning, being a part of the NE 1/4 of Section 25, T2S, R5E, City of Ann Arbor, Washtenaw County, Michigan and containing two lots, numbered 1 and 2.

CERTIFICATE OF APPROVAL BY THE CITY PLANNING COMMISSION

This plat was approved by the Planning Commission of the City of Ann Arbor, Michigan, at a meeting held on the 19th day of July, 1984.

Richard A. Ware, Chairman
 Joseph W. Edwards, Vice-Chairman
 Robert V. Galbreath, Secretary

COPY

Register's Office
 Labelled as Subdivision
 Filed in Liber 12 of Plats
 July 2, 1984
 Billie S. Fannum, Auditor General
 Richard E. Lomax, First Examiner

COUNTY TREASURER'S CERTIFICATE

I hereby certify, that there are no tax liens or titles held by the State on the lands described hereon, and that there are no tax liens or titles held by individuals on said lands for the five years preceding the 14th day of April, 1984, and that the taxes for said period of five years are all paid, as shown by the records of this office.

Sylvester A. Leonard,
 County Treasurer

APPROVAL BY COUNTY PLAT BOARD

This plat was approved on the 12th day of June, 1984, by the Washtenaw County Plat Board.
 Patricia Newbark Hardy, County Register of Deeds
 John H. Flook, County Drain Commissioner
 J. Martin Remppe, Auditor
 Herbert C. Loeffler, Auditor
 John P. Cook, Auditor

CERTIFICATE OF MUNICIPAL APPROVAL

This plat was approved by the Common Council of the City of Ann Arbor at a meeting held on the 19th day of July, 1984, and is in compliance with Section 19a and that the width of lots conforms with requirements of Section 30, Act 172, of 1929, as amended.

Fred J. Looker, Clerk

SURVEYOR'S CERTIFICATE

I hereby certify that the plat hereon delineated is a correct one and that permanent metal monuments consisting of bars not less than one-half inch in diameter and 36 inches in length, or shorter bars of not less than one-half inch in diameter lapped over each other at least 6 inches with an over-all length of not less than 36 inches, encased in a concrete cylinder at least 4 inches in diameter and 36 inches in depth have been placed at points marked thus (⊙) as thereon shown at all angles in the boundaries of the land platted, at all the intersections of streets, intersections of alleys, or of streets and alleys, and at the intersection of streets and alleys with the boundaries of the plat as shown on said plat.

Charles C. Wilson
 Registered Surveyor No. 13604
 114 North First Street, Ann Arbor,
 Michigan