

Restrictions: See Liber 581 Page 626

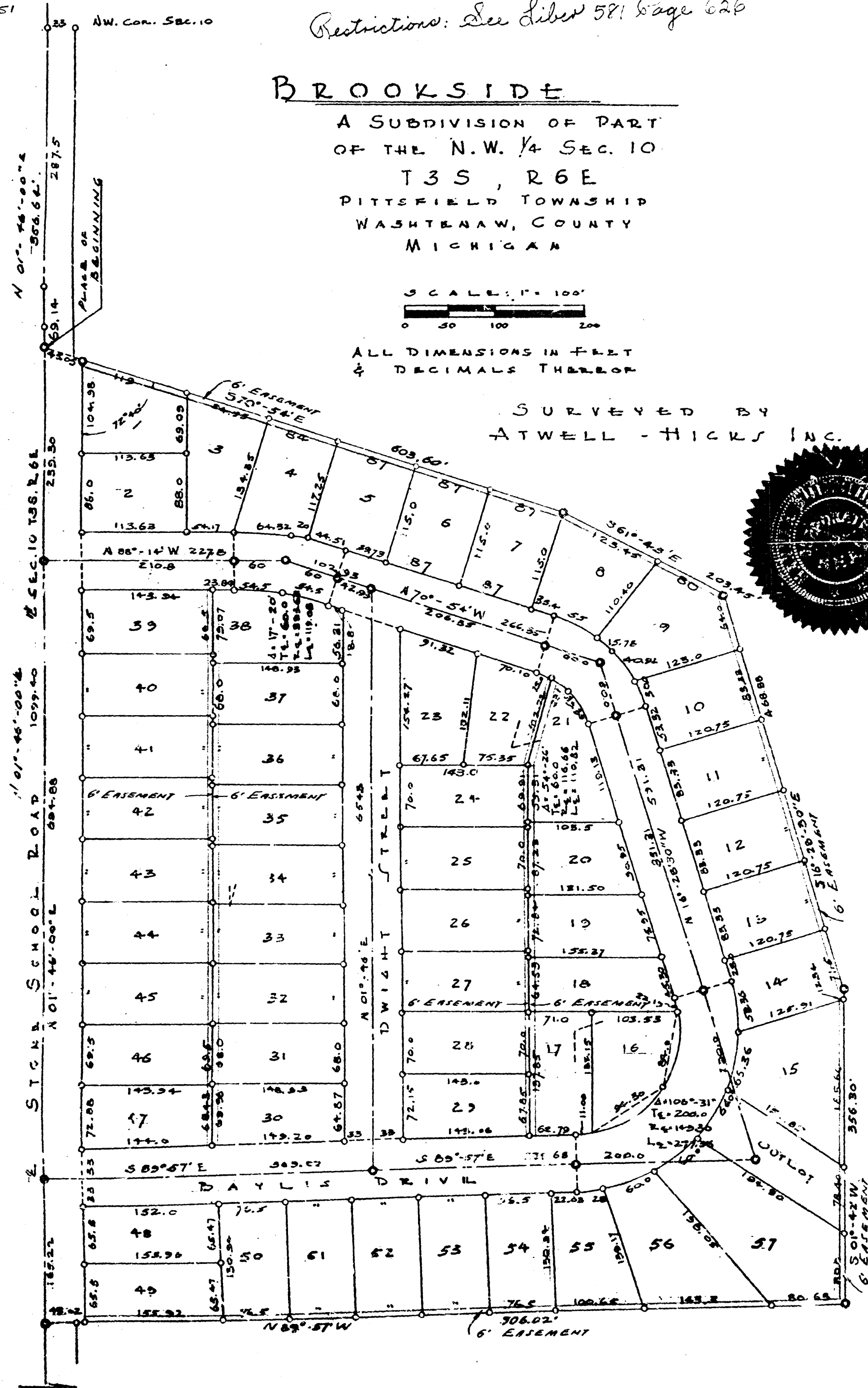
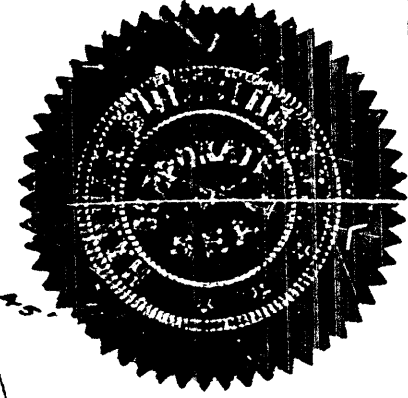
BROOKSIDE

A SUBDIVISION OF PART
OF THE N. W. 1/4 SEC. 10
T 3 S, R 6 E
PITTSFIELD TOWNSHIP
WASHTENAW COUNTY
MICHIGAN

SCALE: 1" = 100'

ALL DIMENSIONS IN FEET
& DECIMALS THEREOF

SURVEYED BY
ATWELL - HICKS INC.



NOTE: EASEMENT INDICATION - EASEMENTS
INDICATED ON SAID PLAT ARE HEREBY RESERVED FOR THE
USE OF PUBLIC UTILITIES.

DEDICATION

KNOW ALL MEN BY THESE PRESENTS, that we... Hannah Building Co.,
Michigan corporation by Eugene H. Hannah
President, and Clataree Ellis Franz
Secretary as proprietor, have caused the land embraced in the annexed plat
to be surveyed, laid out and platted to be known as Brookside A Subdivi-
sion of part of the N. W. 1/4 Sec. 10, T. 3 S; R. 6 E; Pitts-
field Township, Washtenaw County, Michigan
and that the streets and alleys as shown on said plat are hereby dedicated to the
use of the public.

Signed and Sealed in the Presence of:
Hannah Building Co.
Elmer A. Clark (Witness) Eugene H. Hannah President
Robert S. Hollis (Witness) Clataree Ellis Franz Secretary

ACKNOWLEDGMENT

STATE OF Michigan }
County of Washtenaw } ss.
On this twelfth day of September A. D. 1951, before
me, Elmer A. Clark, a Notary Public in and for
said county appeared Eugene H. Hannah and Clataree
Franz to me personally known, who being each by me duly sworn did say that they are the
President and Secretary respectively of the Hannah Building
Co., Michigan corporation,
and that the seal affixed to said instrument is the corporate seal of said corporation and
that said instrument was signed and sealed in behalf of said corporation by authority
of its Board of Directors and the said Eugene H. Hannah and Clataree
Ellis Franz acknowledged said
instrument to be the free act and deed of said corporation.
Elmer A. Clark Notary Public, Washtenaw County
My Commission expires September 11, 1951.

DESCRIPTION OF LAND PLATTED

The land embraced in the annexed plat of Brookside, a Subdivision
of part of the N. W. 1/4 Sec. 10, T. 3 S; R. 6 E; Pittsfield
Township, Washtenaw County, Michigan
is described as follows:
Commencing at a point on the West line of
Sec. 10, T 3 S, R 6 E, Pittsfield Twp., Washtenaw County,
Michigan 356.64 feet South of the Northwest corner of said
Sec. 10, and running thence South 70°-54'-00" East 603.60
feet; thence South 61°-45'-00" East 203.45 feet; thence
South 16°-28'-30" East 468.88 feet; thence South 1°-42'-00"
West 356.3 feet; thence North 89°-57'-00" West 906.02
feet to the West line of said Section, a said point being 1230.00
feet North of the West 1/4 post of said Sec. 10; thence North
1°-46'-00" East along the West line of said Section 1099.4
feet to the place of beginning.

Examined and Approved

October 2, 1951
Mayme Jewell Purdy Deputy Auditor General

SURVEYOR'S CERTIFICATE

I hereby certify that the plat hereon delineated is a correct one and that permanent
metal monuments consisting of bars not less than one-half inch in diameter and 48 inches
in length, or shorter bars of not less than one-half inch in diameter lapped over each
other at least 6 inches with an over-all length of not less than 48 inches, encased in a
concrete cylinder of at least 4 inches in diameter and 48 inches in depth have been placed
at points marked thus (O) as thereon shown at all angles in the boundaries of the
land plotted, at all the intersections of streets, intersections of alleys, or of streets and
alleys, and at the intersections of streets and alleys with the boundaries of the plat as
shown on said plat.
Herbert S. Hicks Registered Land Surveyor or Registered Professional Engineer
No. 1715

APPROVAL BY BOARD OF COUNTY ROAD COMMISSIONERS

This plat has been examined and was approved on the 21st
day of September 1951 by the Washtenaw
County Board of Road Commissioners.
James C. Hendley (Chairman)
H. L. Frisinger (Member)
Raymond L. Koch (Member)

MUNICIPAL APPROVAL

This plat was approved by the Township Board
of the Township of Pittsfield
at a meeting held April 9, 1951
Lambert H. Fleming (Clark)

APPROVAL BY COUNTY PLANNING COMM.

This plat was approved on the 21st day of
Sept 1951
LEIGH BEACH Chairman
George D. Hurrell Member
JOHN W. HYDE Member

APPROVAL BY BOARD OF COUNTY AUDITORS

Approved by the Board of County Auditors of Washtenaw
County, Michigan, this 28th day of September 1951.
J. Martin Rempff (Chairman)
Adolph F. Gross
Herbert G. Loeffler

COUNTY TREASURER'S CERTIFICATE

Office of County Treasurer, Washtenaw County.
I hereby certify, that there are no tax liens or titles held by the State on the lands de-
scribed hereon, and that there are no tax liens or titles held by individuals on said lands,
for the five years preceding the 27th day
September 1951, and that the taxes for said period of
five years are all paid, as shown by the records of this office.
This certificate does not apply to taxes, if any, now in process of collection by township,
city or village collecting officers.
W. F. Verner (County Treasurer)

REGISTER OF DEEDS

Washtenaw County
RECEIVED for Record this 3rd
day of October A. D. 1951
at 2:59 o'clock P. M. and
recorded in Liber 11 of Plats
on page 25

Thomas A. FitzGerald
Register of Deeds