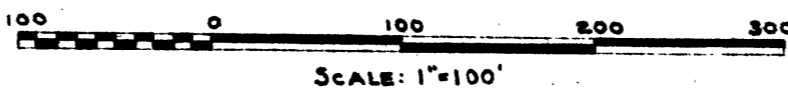
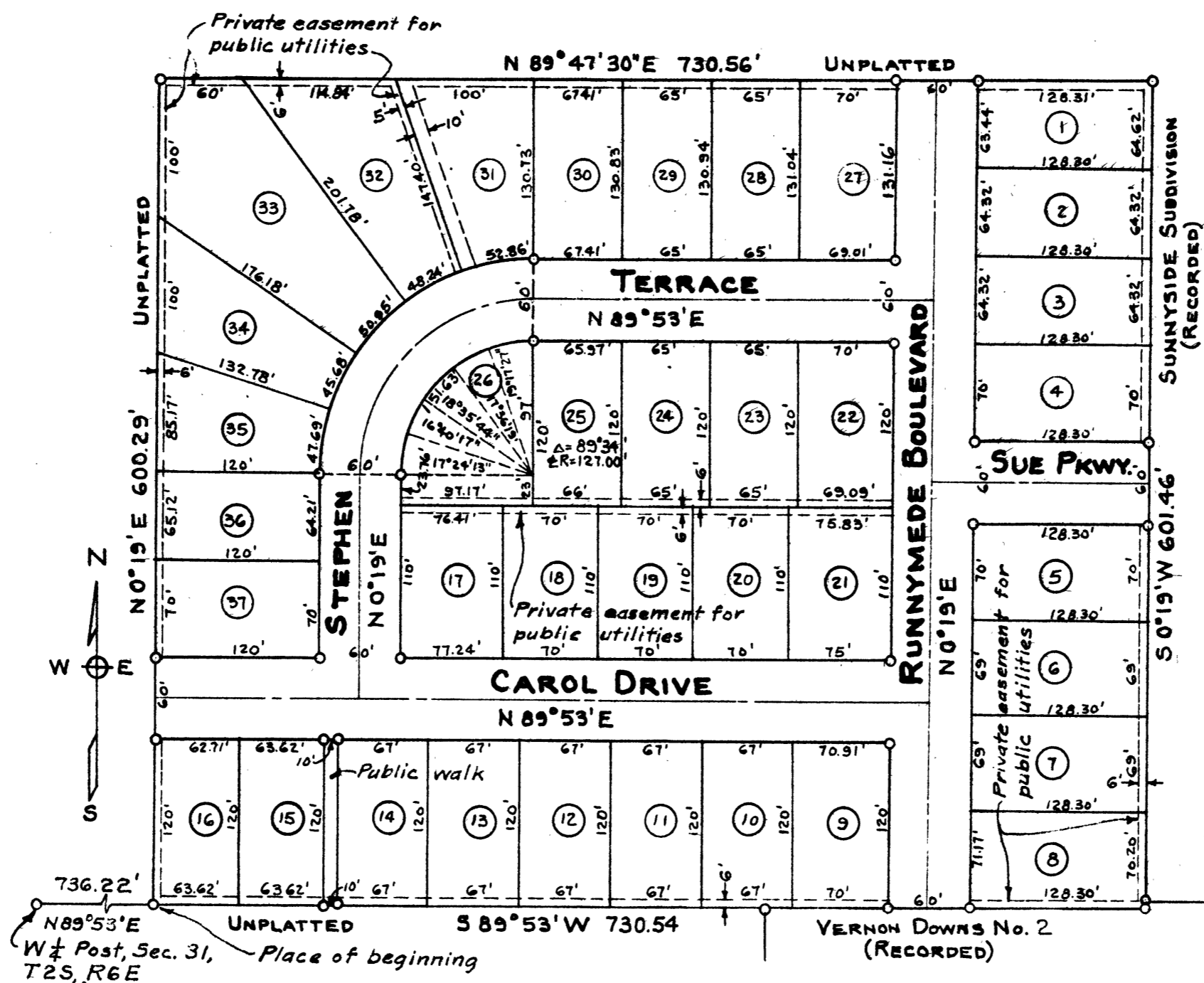


CORAL RIDGE

A SUBDIVISION OF PART OF SECTION 31, TOWN 2 SOUTH, RANGE 6 EAST,
CITY OF ANN ARBOR, WASHTENAW COUNTY, MICHIGAN



NOTE: ALL DIMENSIONS ARE IN FEET AND DECIMALS THEREOF.
ALL CURVED LOT DIMENSIONS ARE ARC LENGTHS.



DESCRIPTION OF LAND PLATTED

The land embraced in the annexed plat of "Coral Ridge, A Subdivision of Part of Section 31, Town 2 South, Range 6 East, City of Ann Arbor, Washtenaw County, Michigan," contains 37 lots, numbered 1 through 37, and is described as follows: Commencing at the west quarter post of Section 31, T. 2 S., R. 6 E., thence N 89° 53' E 736.22 feet for a place of beginning; thence N 0° 19' E 600.29 feet; thence N 89° 47' 30" E 730.56 feet; thence S 0° 19' W 601.46 feet; thence S 89° 53' W 730.54 feet to the place of beginning.

DEDICATION

KNOW ALL MEN BY THESE PRESENTS that we, Charles B. Yahr and Norma I. Yahr, his wife; Esther R. LaCoe, a widow; and Theodore Wolff, Jr., a single man, as proprietors, have caused the land embraced in the annexed plat to be surveyed, laid out, and platted to be known as "Coral Ridge, A Subdivision of Part of Section 31, T. 2 S., R. 6 E., City of Ann Arbor, Washtenaw County, Michigan," and that the drive, terrace, boulevard, parkway, and walk as shown on said plat are hereby dedicated to the use of the public.

COPY

Register's Office
Washtenaw County, ss.
Plat of Coral Ridge
was Rec'd this 27th day of December, 1956 at 11:00 o'clock A.M., in Liber 13 of Plat on page 54
M. L. Scott, Register of Deeds
ORIGINAL ON FILE

I hereby certify this copy is a true copy of map or plat forwarded the Register of Deeds for recording.
Date December 26, 1956
FILED IN AUDITOR GENERAL'S DEPT.
Date January 2, 1957
EXAMINED AND APPROVED
Date December 26, 1956
Frank S. Reynolds, Auditor General
By W. L. Mac Elroy, Plat Commissioner

CITY CLERK'S CERTIFICATE

I hereby certify that the width and depth of lots shown on this plat conform with the rules and regulations of the City of Ann Arbor and the requirements of Section 30, Act 172, P.A. 1929, as amended by Act 186, P.A. 1954.

Fred J. Looker
Fred J. Looker (Clerk)

APPROVAL BY COUNTY PLAT BOARD

This plat was approved on the 20th day of December, 1956 by the Washtenaw County Plat Board.

Patricia Newkirk Hardy
Patricia Newkirk Hardy (County Register of Deeds)
J. Martin Rempop
J. Martin Rempop (Auditor)
Adolph F. Gross
Adolph F. Gross (Auditor)
Herbert G. Loeffler
Herbert G. Loeffler (Auditor)

MUNICIPAL APPROVAL

This plat was approved by the Council of the City of Ann Arbor at a meeting held on October 15, 1956.

Fred J. Looker
Fred J. Looker (Clerk)

SURVEYOR'S CERTIFICATE

I hereby certify that the plat hereon delineated is a correct one and that permanent metal monument consisting of bars not less than one-half inch in diameter and 36 inches in length, encased in a concrete cylinder at least four inches in diameter and 36 inches in depth have been placed at points marked thus (o) as thereon shown at all angles in the boundaries of the land platted, at all the intersections of streets and alleys with the boundaries of the plat as shown on said plat. All dimensions are given in feet and decimals thereof.

Samuel D. Porter
Samuel D. Porter, Registered Land Surveyor No. 1469

ATTORNEY'S OPINION

I hereby certify from an examination of the abstract to the above described land that there are no rights, including mineral rights, other than in the parties joining in the Dedication.

Louis E. Burke
Louis E. Burke (Attorney)

Dated this 13th day of August, 1956.

CERTIFICATE OF APPROVAL BY THE CITY PLANNING COMMISSION

This plat was approved by the Planning Commission of the City of Ann Arbor, Michigan, at a meeting held on the 24th day of AUG., 1956.

John E. Swisher, Jr.
John E. Swisher, Jr. (Chairman)
Leo P. Meyers
Leo P. Meyers (Secretary)

COUNTY TREASURER'S CERTIFICATE

Office of County Treasurer
Washtenaw County, Michigan

I hereby certify that there are no tax liens or titles held by the State on the lands described hereon and that there are no tax liens or titles held by individuals on said lands for five years preceding the 13th day of August, 1956, and that the taxes for said period of five years are paid, as shown by the records of this office. This Certificate does not apply to taxes, if any, now in process of collection by Township or City collecting officers.

W. F. Verner
W. F. Verner (County Treasurer)

ACKNOWLEDGMENT

STATE OF MICHIGAN } ss.
County of Washtenaw

On this 10th day of August, 1956 before me, a Notary Public in and for said county personally came the above named Charles B. Yahr and Norma I. Yahr, his wife; Esther R. LaCoe, a widow; and Theodore Wolff, Jr., a single man; known to me to be the persons who executed the above Dedication, and acknowledged the same to be their free act and deed.

Wilma L. Howard
Wilma L. Howard
Notary Public, Washtenaw County

My Commission expires Feb. 8, 1958.