

ORIGINAL

SHEET 1 OF 2

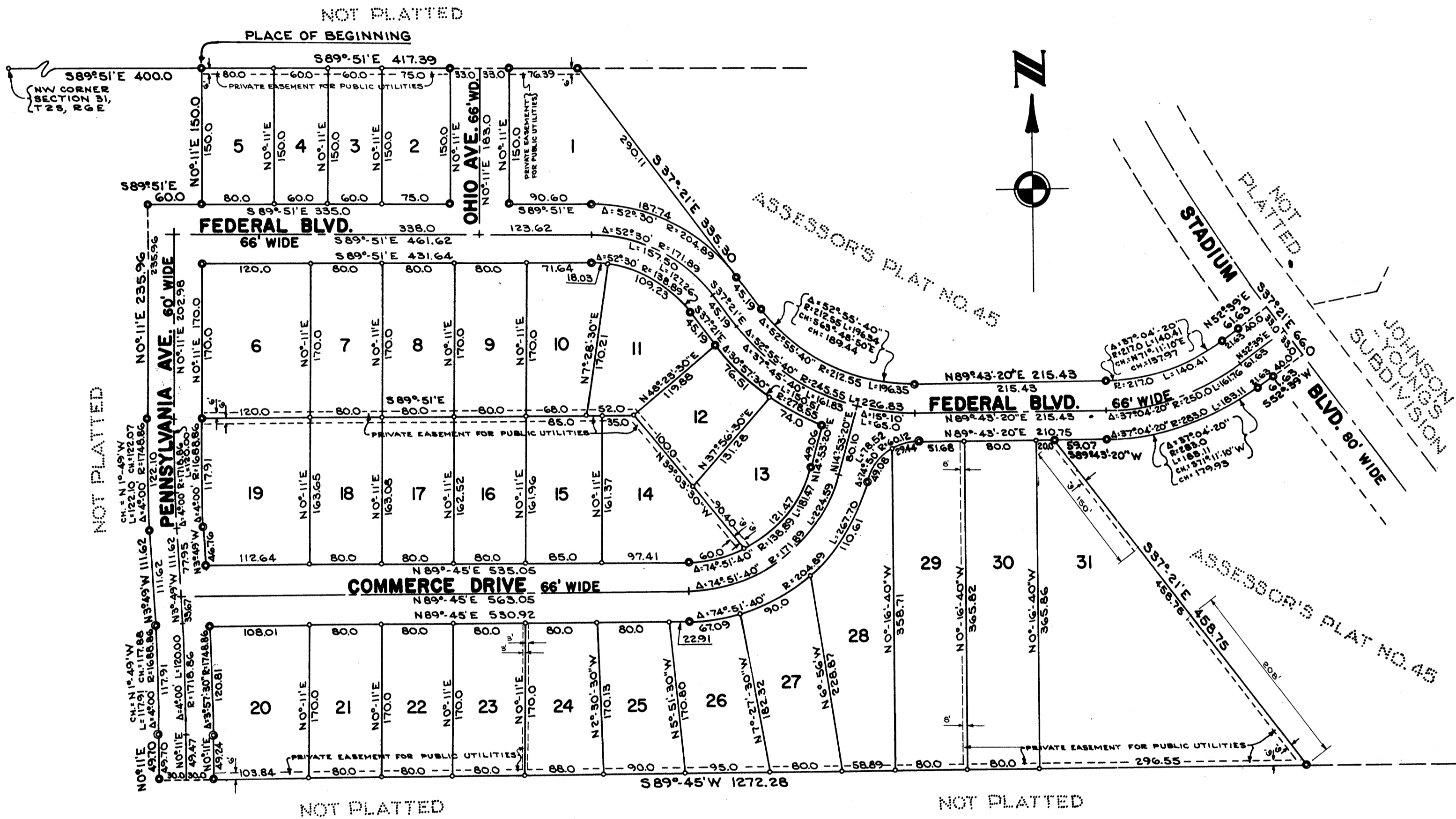
BEDFORD-BUTTNER COMMERCIAL SUBDIVISION

OF PART OF THE N 1/2 OF THE NW 1/4 OF SECTION 31, T2S,
R6E, CITY OF ANN ARBOR, WASHTENAW COUNTY, MICHIGAN



SCALE: 1"=100'

ALL DIMENSIONS IN FEET AND DECIMALS THEREOF
ALL DIMENSIONS ON CURVES ARE ARC LENGTHS
SURVEY BY ATWELL-HICKS, INC.



THE UTILITY EASEMENT ALONG THE REAR LOT LINES
OF LOTS 6, 7, 18, & 19 WAS RELEASED BY THE CITY TO OWNER
OCT 21, 1992 L:2697 P:741

BEDFORD-BUTTNER COMMERCIAL SUBDIVISION

OF PART OF THE N 1/2 OF THE NW 1/4 OF SECTION 31, T2S, R6E, CITY OF ANN ARBOR, WASHTENAW COUNTY, MICHIGAN

SHEET 2 OF 2

0 100 200 300

SCALE: 1"=100'

ALL DIMENSIONS IN FEET AND DECIMALS THEREOF ALL DIMENSIONS ON CURVES ARE ARC LENGTHS SURVEY BY ATWELL-HICKS, INC.

DEDICATION

KNOW ALL MEN BY THESE PRESENTS, that we, Edgar L. Buttner and Helen M. Buttner, husband and wife, Clay P. Bedford and Catherine A. Bedford, husband and wife, by Beulah J. Fuller, their Attorney in Fact, and the Ann Arbor Industrial Park Corporation, a Michigan Corporation by W.F. Freistat, Secretary-Treasurer, as proprietors, have caused the land embraced in the annexed plat to be surveyed, laid out and platted to be known as BEDFORD-BUTTNER COMMERCIAL SUBDIVISION of part of the N 1/2 of the NW 1/4 of Section 31, T2S, R6E, City of Ann Arbor, Washtenaw County, Michigan and the Boulevards, Avenues and Drive as shown on said plat are hereby dedicated to the use of the public, and the easements indicated on said plat are not dedicated to the public but reserved for public utilities and any other use designated hereon and no permanent structures are to be located within said easement. Power of Attorney granted Beulah J. Fuller recorded in Liber 962 of Records, page 513, Washtenaw County Records.

ACKNOWLEDGMENT

STATE OF MICHIGAN)) ss. County of Washtenaw)

On this... 14th... day of September... 1961, before me, a Notary Public in and for said county, personally came the above named Beulah J. Fuller, known to me to be the person who executed the above dedication on behalf of Edgar L. Buttner and Helen M. Buttner, husband and wife, and Clay P. Bedford and Catherine A. Bedford, husband and wife, as she was authorized to do and acknowledges the same to be her free act and deed.

Barbara J. Gordon Notary Public, Washtenaw County

My Commission expires August 7, 1964

Edgar L. Buttner, Helen M. Buttner, Clay P. Bedford, Catherine A. Bedford

Signed in the Presence of: Barbara J. Gordon (Witness), Richard E. Bidstrup (Witness)

BY: Beulah J. Fuller Attorney-in-Fact

ANN ARBOR INDUSTRIAL PARK CORPORATION

Signed and Sealed in the Presence of: Thelma Younghaus (Witness), Johnnie Enlow (Witness)

BY: W.F. Freistat Secretary-Treasurer

DESCRIPTION OF LAND PLATTED

The land embraced in the annexed plat of BEDFORD-BUTTNER COMMERCIAL SUBDIVISION of part of the N 1/2 of the NW 1/4 of Section 31, T2S, R6E, City of Ann Arbor, Washtenaw County, Michigan is described as follows:

Commencing at the NW corner of Section 31, T2S, R6E, City of Ann Arbor, Washtenaw County, Michigan, thence S 89° 51'E 400.0 feet for a PLACE OF BEGINNING; thence S 89° 51'E 417.39 feet; thence S 37° 21'E 335.30 feet; thence 196.34 feet along the arc of a circular curve concave to the NE radius 212.55 feet, chord S 63° 48' 50"E 189.44 feet; thence N 89° 43' 20"E 215.43 feet; thence 140.41 feet along the arc of a circular curve concave to the NW, radius 217.0 feet, chord N 71° 11' 10"E 137.97 feet; thence N 52° 39'E 61.63 feet; thence S 37° 21'E 66.00 feet; thence S 52° 39'W 61.63 feet; thence 183.11 feet along the arc of a circular curve concave to the NW, radius 283.0 feet, chord S 71° 11' 10"W 179.93 feet; thence S 89° 43' 20" W 59.07 feet; thence S 37° 21'E 458.75 feet; thence S 89° 45' W 1272.28 feet; thence N 0° 11'E 49.70 feet; thence 117.91 feet along the arc of a circular curve concave to the West, radius 1688.86 feet, chord N 1° 49'W 117.88 feet; thence N 3° 49'W 111.62 feet; thence 122.10 feet along the arc of a circular curve concave to the East, radius 1748.86 feet, chord N 1° 49'W 122.07 feet; thence N 0° 11'E 235.96 feet; thence S 89° 51'E 60.00 feet; thence N 0° 11'E 150.0 feet to the Place of Beginning, containing 31 lots numbered 1 through 31 inclusive.

SURVEYOR'S CERTIFICATE

I hereby certify that the plat hereon delineated is a correct one and that permanent metal monuments consisting of bars not less than one-half inch in diameter and 36 inches in length, or shorter bars of not less than one-half inch in diameter lapped over each other at least 6 inches with an over-all length of not less than 36 inches in depth have been placed at points marked thus (O) as thereon shown at all angles in the boundaries of the land platted, at all the intersections of streets, intersections of alleys, or of streets and alleys, and at the intersections of streets and alleys with the boundaries of the plat as shown on said plat.

Richard E. Bidstrup Registered Land Surveyor No. 11360

ACKNOWLEDGMENT

STATE OF MICHIGAN)) ss. County of Washtenaw)

On this... 11th... day of September... A.D., 1961, before me, a Notary Public in and for said county appeared W.F. Freistat, to me personally known, who being by me duly sworn did say that he is Secretary-Treasurer of the Ann Arbor Industrial Park Corporation, a Michigan Corporation, and that the seal affixed to said instrument is the corporate seal of said corporation and that said instrument was signed and sealed in behalf of said corporation by authority of its Board of Directors and the said W.F. Freistat acknowledges said instrument to be the free act and deed of said corporation.

FRANCES GLUCK Notary Public, Washtenaw County

My Commission expires 11-2-62

CERTIFICATE OF APPROVAL BY THE CITY PLANNING COMMISSION

This plat was approved by the Planning Commission of the City of Ann Arbor, Michigan at a meeting held on the 10th day of October, 1961

Casper M. Enkemann, Chairman John D. Paul, Secretary

CERTIFICATE OF MUNICIPAL APPROVAL

This plat was approved by the Common Council of the City of Ann Arbor at a meeting held October 16, 1961 and that the width of lots is in compliance with requirements of Section 30, Act 172, of 1929, as amended.

Fred J. Hooker Clerk

COUNTY TREASURER'S CERTIFICATE Office of County Treasurer, Washtenaw County

I hereby certify, that there are no tax liens or titles held by the State on the lands described hereon, and that there are no tax liens or titles held by individuals on said lands for the five years preceding the 15th day of November 1961, and that the taxes for said period of five years are all paid, as shown by the records of this office. This certificate does not apply to taxes, if any, now in process of collection by township, city or village collecting officers.

W.F. Verner (County Treasurer) REGISTERED IN AUDITOR GENERAL'S DEPT. DATE: NOVEMBER 29, 1961

APPROVAL BY COUNTY PLAT BOARD

This plat was approved on the 24th day of November, 1961, by the Washtenaw County Plat Board. Patricia Newkirk Hardy, John H. Flook, County Register of Deeds, County Drain Commissioner, J. Martin Rempp, Auditor, Herbert G. Loeffler, Auditor, John P. Cook, Auditor