

NORTH CAMPUS HEIGHTS NO. 3

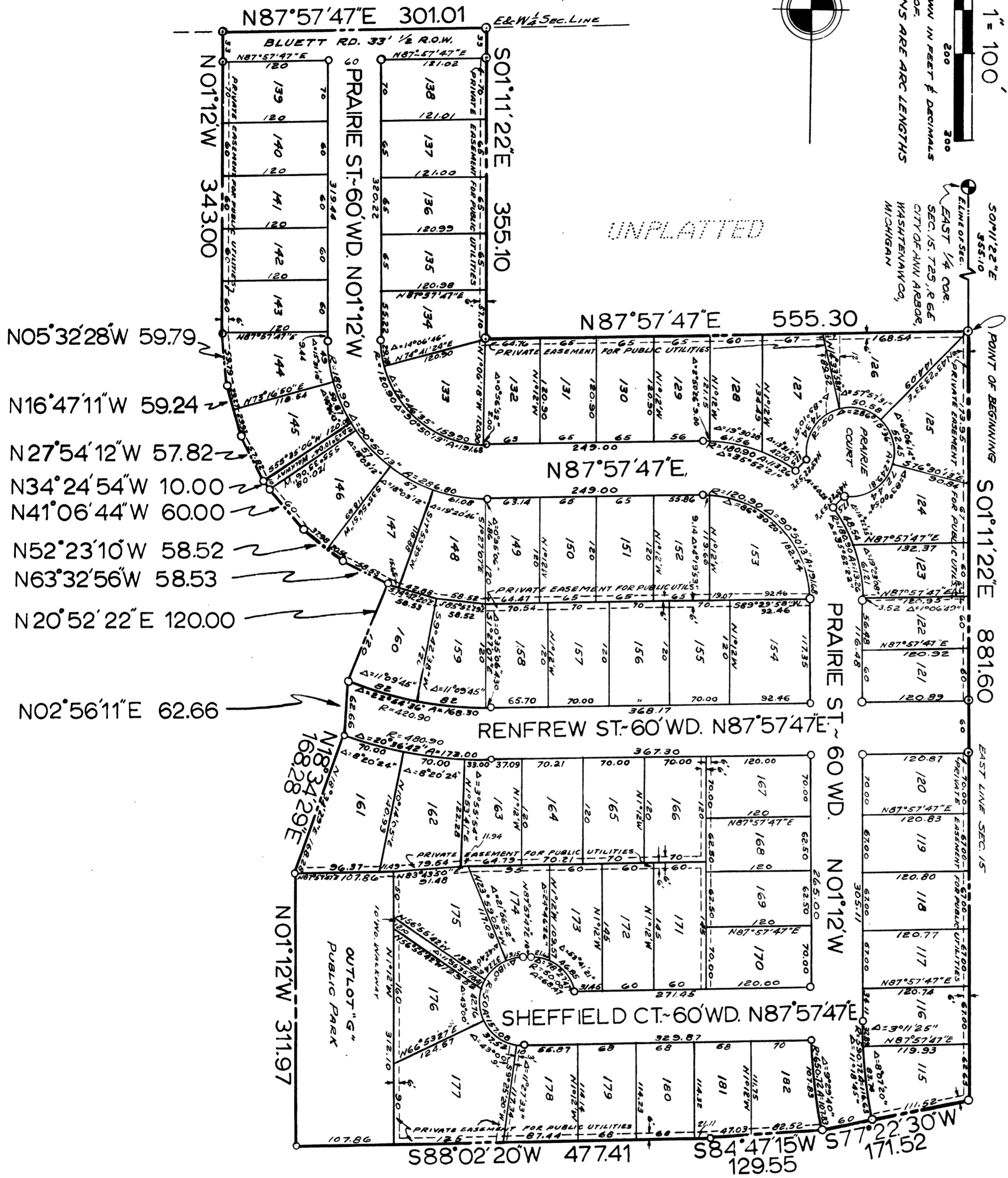
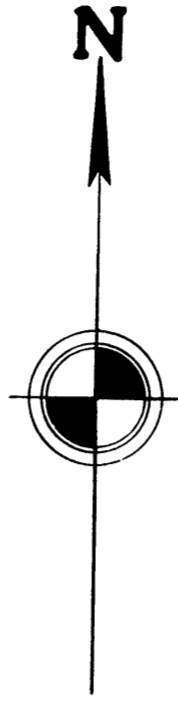
A SUBDIVISION OF PART OF THE SE 1/4 OF SECTION 15, T2S, R6E, CITY OF ANN ARBOR, WASHTEENAW COUNTY, MICHIGAN

PREPARED BY - AMERICAN ENGINEERING CO.
CIVIL ENGINEERS & SURVEYORS
ANN ARBOR, MICHIGAN

SCALE 1" = 100'



ALL DIMENSIONS ARE SHOWN IN FEET & DECIMALS
THEREOF.
ALL CURVE DIMENSIONS ARE ARC LENGTHS



- N05°32'28"W 59.79
- N16°47'11"W 59.24
- N27°54'12"W 57.82
- N34°24'54"W 10.00
- N41°06'44"W 60.00
- N52°23'10"W 58.52
- N63°32'56"W 58.53
- N20°52'22"E 120.00
- N02°56'11"E 62.66

NORTH CAMPUS HEIGHTS

COPY

SHEET 1 OF 2 SHEETS

NORTH CAMPUS HEIGHTS NO.3

A SUBDIVISION OF PART OF THE SE 1/4 OF SECTION 15,
T2S, R6E, CITY OF ANN ARBOR, WASHTENAW COUNTY, MICHIGAN

DEDICATION

KNOW ALL MEN BY THESE PRESENTS, that we, Arbor Heights Building Corporation, a Michigan Corporation, by S. Brooks Barron, Treasurer, and Thomas A Gallagher, President, as proprietors, have caused the land embraced in the annexed plat to be surveyed, laid out and platted to be known as NORTH CAMPUS HEIGHTS NO.3, a Subdivision of part of the SE 1/4 of Section 15, T2S, R6E, City of Ann Arbor, Washtenaw County, Michigan, and that the curbs, streets and roads as shown on said plat are hereby dedicated to the use of the public and the easements indicated on said plat are not dedicated to the public but reserved for public utilities and any other use designated herein and no permanent structures are to be located within said easement.

Signed in the presence of:

E. R. Adcox
E. R. Adcox Witness
Adelle E. Farmer
Adelle E. Farmer Witness

ARBOR HEIGHTS BUILDING CORPORATION
S. Brooks Barron
S. Brooks Barron, Treasurer
Thomas A. Gallagher
Thomas A. Gallagher, President

SURVEYOR'S CERTIFICATE

I hereby certify that the plat hereon delineated is a correct one and that permanent metal monuments consisting of bars not less than one-half inch in diameter and 36 inches in length, or shorter bars of not less than one-half inch in diameter lapped over each other at least 6 inches with an over-all length of not less than 36 inches, encased in a concrete cylinder at least 4 inches in diameter and 36 inches in depth have been placed at points marked (o) as thereon shown at all angles in the boundaries of the land platted, at all intersections of streets, intersections of alleys, or of streets and alleys, and at the intersections of streets and alleys with the boundaries of the plat as shown on said plat.

Murray J. Knowles, Jr.
Murray J. Knowles, Jr.
Reg. Civil Engineer & Surveyor
#5342

ACKNOWLEDGMENT

STATE OF MICHIGAN }
County of Wayne } ss

On this 4TH day of SEPTEMBER A.D., 1962 before me, A Notary Public, in and for said County appeared S. Brooks Barron and Thomas A. Gallagher to me personally known, who being by me duly sworn did say they are the Treasurer and President respectively of the Arbor Heights Building Corporation and that said instrument was signed in behalf of said Corporation by authority of its Board of Directors and the said S. Brooks Barron and Thomas A. Gallagher acknowledged said instrument to be the free act and deed of said Corporation.

Elvie R. Adcox
Elvie R. Adcox
Notary Public, Wayne County, Michigan
My Commission expires JULY 31, 1965

COPY
Register's Office
Washtenaw County. } S. S.
Plat of
North Campus Heights No. 3
was Recorded this 23rd day of
October A. D., 1962 at 4:48 o'clock
16 P.M. in Liber 16 of plats
79 and 80
Patricia Newkirk Hardy
REG. CIVIL ENGINEER & SURVEYOR
ORIGINAL ON FILE

CERTIFICATE OF APPROVAL BY THE CITY PLANNING COMMISSION

This plat was approved by the Planning Commission of the City of Ann Arbor, Michigan, at a meeting held on the 3rd day of October, 1962.

Richard A. Ware
Richard A. Ware, Chairman
David S. Pollock
David S. Pollock, Vice Chairman
Joseph W. Edwards
Joseph W. Edwards, Secretary

COUNTY TREASURER'S CERTIFICATE

Office of County Treasurer, Washtenaw County

I hereby certify, that there are no tax liens or titles held by the State on the lands described hereon, and that there are no tax liens or titles held by individuals on said lands for the five years preceding the 10 day of October 1962, and that the taxes for said period of five years are all paid, as shown by the records of this office.

This certificate does not apply to taxes, if any, now in process of collection by township, city or village collecting officers.

W. F. Verner
W. F. Verner (County Treasurer)

CERTIFICATE OF MUNICIPAL APPROVAL

This plat was approved by the Common Council of the City of Ann Arbor at a Meeting held October 8, 1962 and the width of lots is in compliance with requirements of Section 30, Act 172, of 1929, as amended, and complies with Section 19a as amended.

Fred J. Looker
Fred J. Looker, Clerk

I hereby certify this copy is a true copy of map or plat forwarded the Register of deeds for recording.
Date October 18, 1962
FILED IN AUDITOR GENERAL'S DEPT.
Date October 24, 1962
EXAMINED AND APPROVED
Date October 18, 1962

Billie S. Farum
BILLIE S. FARUM
AUDITOR GENERAL
Richard E. Lomax
Richard E. Lomax - Plat Examiner

APPROVAL BY COUNTY PLAT BOARD

This plat was approved on the 12th day of Oct. 1962 by the Washtenaw County Plat Board

Patricia Newkirk Hardy
Patricia Newkirk Hardy
(County Register of Deeds)
John H. Flook
John H. Flook
(County Drain Commissioner)
J. Martin Rempy
J. Martin Rempy
(Auditor)
John P. Cook
John P. Cook
(Auditor)

Herbert G. Loeffler
Herbert G. Loeffler
(Auditor)

DESCRIPTION OF LAND PLATTED

The land embraced in the annexed plat of NORTH CAMPUS HEIGHTS NO.3 a Sub-division of part of the S.E. 1/4 Section 15, T2S, R6E, City of Ann Arbor, Washtenaw County, Michigan, is described as follows: Beginning at a point on the East line of Section 15, T2S, R6E, Washtenaw County, Michigan, said point being located S01°11'22"E 355.10 ft. from the East 1/4 Section corner and running thence along said East Section line S01°11'22"E 881.60 ft; thence S77°22'30"W 171.52 ft; thence S84°47'15"W 129.55 ft; thence S88°02'20"W 477.41 ft; thence N01°12'W 311.97 ft; thence N18°34'29"E 168.28 ft; thence N02°56'11"E 62.66 ft; thence N20°52'22"E 120.00 ft; thence N63°32'56"W 58.53 ft; thence N52°23'10"W 58.52 ft; thence N41°06'44"W 60.00 ft; thence N34°24'54"W 10.00 ft; thence N27°54'12"W 57.82 ft; thence N16°47'11"W 59.24 ft; thence N05°32'28"W 59.79 ft; thence N01°12'W 343.00 ft; thence N87°57'47"E along the E&W 1/4 Sec. line of Section 15 301.01 ft; thence S01°11'22"E 355.10 ft; thence N87°57'47"E 555.30 ft. to the Point of Beginning. Containing 68 lots numbered 115 through 182 inclusive and 1 Outlot lettered G.

2 OF 2
NORTH CAMPUS HEIGHTS NO. 3
10/23/1962
PLAT NO. 16