

2-1-38  
Michigan

(Copy)

Plat 2

# "ASSESSOR'S PLAT NO. 31.

BEING A REPLAT OF "ARGO LAKE HILLS," A SUBDIVISION OF PART OF THE NORTHWEST QUARTER SECTION 21, TOWN 2 SOUTH, RANGE 6 EAST, MICHIGAN MERIDIAN.

CITY OF ANN ARBOR  
WASHTENAW CO., MICHIGAN

SCALE: 1 IN. = 80 FEET.

Note: All dimensions are given in feet and decimals thereof.  
Curve distances are chord lengths except as noted.

## SURVEYOR'S CERTIFICATE

I hereby certify that the plat hereon delineated is a correct one and that permanent metal monuments of not less than one inch in diameter and fifteen inches in length, set in a concrete base at least four inches in diameter and forty eight inches in depth have been placed at all points marked thus @ as hereon shown at all angles in the boundaries of land platted, at all the intersections of streets, intersections of streets and alleys or of alleys and at the intersections of streets and alleys with the boundaries of the plat as shown on said plat.

(George H. Sandenburgh)

*George H. Sandenburgh*  
Registered Civil Engineer

1 OF 1  
02/05/1938  
ASSESSOR'S PLAT NO. 31  
SECTION 21, TOWN 2 S., RANGE 6 E.

## DEDICATION

KNOW ALL MEN BY THESE PRESENTS: That I, Herbert W. Crippen, Assessor of the City of Ann Arbor, Washtenaw County, Michigan, by virtue of authority in me vested by Section 51, Act 172, P.A. of 1929, having been duly authorized by the Common Council of the City of Ann Arbor, Washtenaw County, Michigan, have caused the land described in the annexed plat to be surveyed, laid out and platted, to be known as "Assessor's Plat No. 31, being a replat of "Argo Lake Hills," a subdivision of part of the Northwest Quarter Section 21, Town 2 South, Range 6 East, Michigan Meridian, City of Ann Arbor, Washtenaw Co., Michigan and that the streets and alleys as shown on said plat are now being used for such purposes.

(Herbert W. Crippen)

*Herbert W. Crippen*  
Assessor of the City of Ann Arbor,  
Washtenaw Co., Michigan.

Witnesses:

*Harold R. Scovill* (Harold R. Scovill)

*Bernard J. DeVries* (Bernard J. DeVries)

## ACKNOWLEDGMENT

STATE OF MICHIGAN }  
COUNTY OF WASHTENAW } ss  
On this 19<sup>th</sup> day of July, A.D. 1937, before me a Notary Public in and for said county personally came the above named Herbert W. Crippen, Assessor of the City of Ann Arbor, Washtenaw County, Michigan, known to me to be the person who executed the above dedication and acknowledged the same to be his free act and deed as such Assessor.

(Clara M. Mast)

*Clara M. Mast*  
Notary Public in and for  
Washtenaw Co., Michigan.

My commission expires June 21, 1940.

## CERTIFICATE OF MUNICIPAL APPROVAL

This plat was approved by the Common Council of the City of Ann Arbor, Washtenaw County, Michigan at a meeting held this 19<sup>th</sup> day of July, 1937.

(Fred C. Perry)

*Fred C. Perry*  
City Clerk

This plat was approved by the Board of Public Works of the City of Ann Arbor, Washtenaw County, Michigan at a meeting held this 10<sup>th</sup> day of January, 1937.

(Fred C. Perry)

*Fred C. Perry*  
City Clerk

## DESCRIPTION

The land embraced in Assessor's Plat No. 31, being a replat of "ARGO LAKE HILLS," a subdivision of part of the Northwest Quarter Section 21, Town 2 South, Range 6 East, Michigan Meridian, City of Ann Arbor, Washtenaw Co., Michigan is described as follows: commencing at an iron pipe monument in the center line of Pontiac Street 45.00 feet, S.17°00' W. from the intersection of the north, east and west eighth line of Section 21, Town 2 South, Range 6 East, Meridian of Michigan with the center line of Pontiac Street; thence continuing S.17°00' W. along the center line of Pontiac Street 783.17 feet; thence N.72°26' W., 214.50 feet; thence S.17°00' W., 132.00 feet; thence N.72°05' W., 82.50 feet; thence N.17°00' E., 13.3 feet; thence N.74°45' W., 574.06 feet to the easterly line of Long Shore Drive; thence N.25°20' E., 311.10 feet to a point of curve; thence in the arc of a circular curve to the left of radius 85.59 feet, through a central angle of 83°21', 124.48 feet to the point of tangency thence N.58°01' W., 84.62 feet to a point of curve; thence in the arc of a circular curve to the right, of radius 60.58 feet, through a central angle of 101°20', 107.12 feet to the point of tangency thence, N.43°19' E., 125.21 feet; thence N.40°47' E., 136.00 feet; thence N.36°30' E., 204.00 feet; thence N.34°23' E., 252.32 feet to the South West corner of "LONG SHORE HEIGHTS"; thence S.73°56' E., along the southerly line of "LONG SHORE HEIGHTS", 795.63 feet to the place of beginning.

## CERTIFICATE OF APPROVAL BY BOARD OF COUNTY AUDITORS

Approved by the Board of County Auditors of Washtenaw County, Michigan this 15<sup>th</sup> day of JUNE, 1937.

(H. Donald Reed)

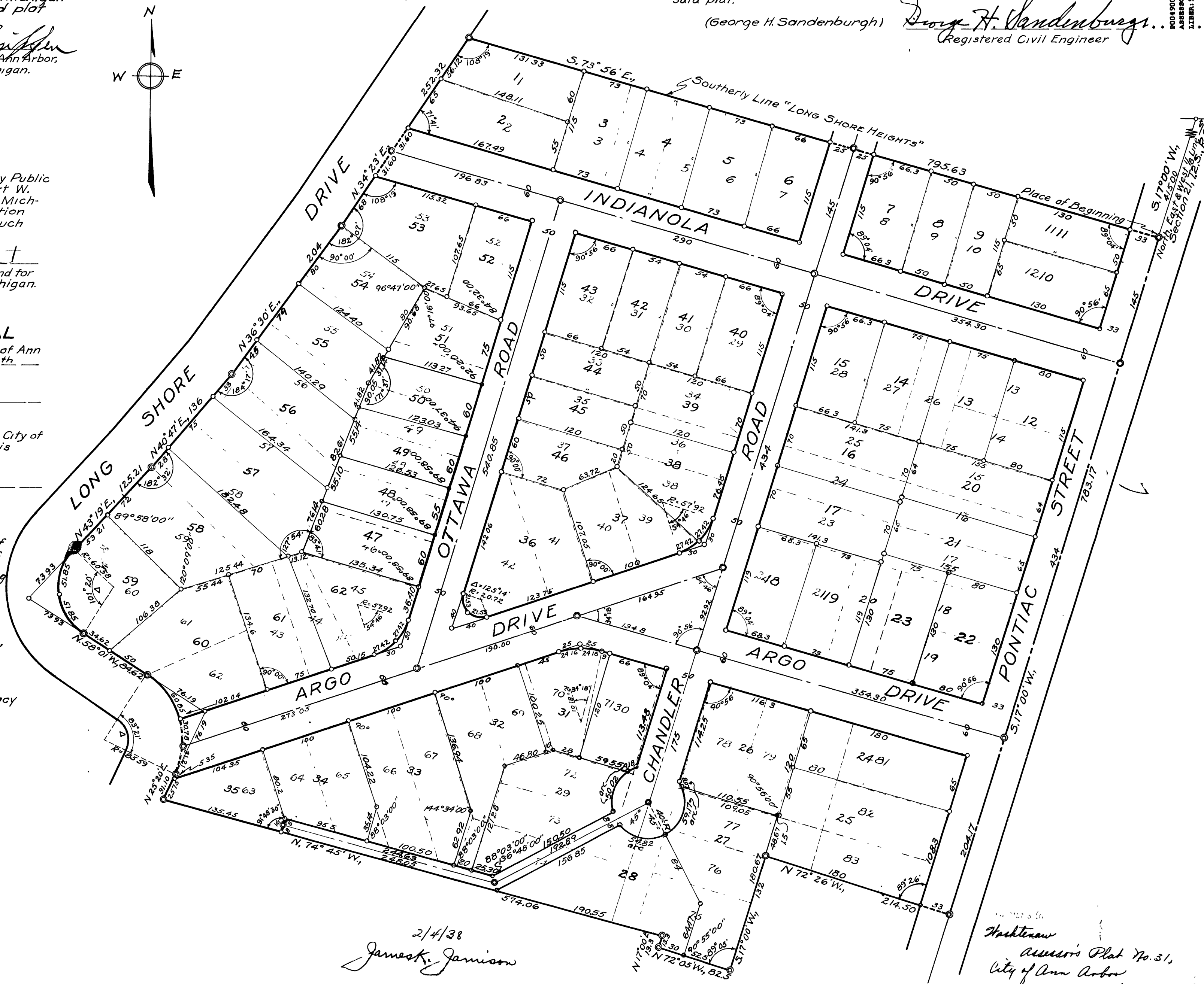
*H. Donald Reed*, C. P. A.  
Chairman

(Otto D. Luick)

*Otto D. Luick*

(Elmer L. Brown)

*Elmer L. Brown*



2/4/38  
*James K. Jamison*

2/4/38  
*James K. Jamison*

2/9/38  
*James K. Jamison*

Washtenaw  
Assessor's Plat No. 31,  
City of Ann Arbor  
28<sup>th</sup>  
February 28 1938  
Plat  
in Page #4  
*Katherine H. Skaw*