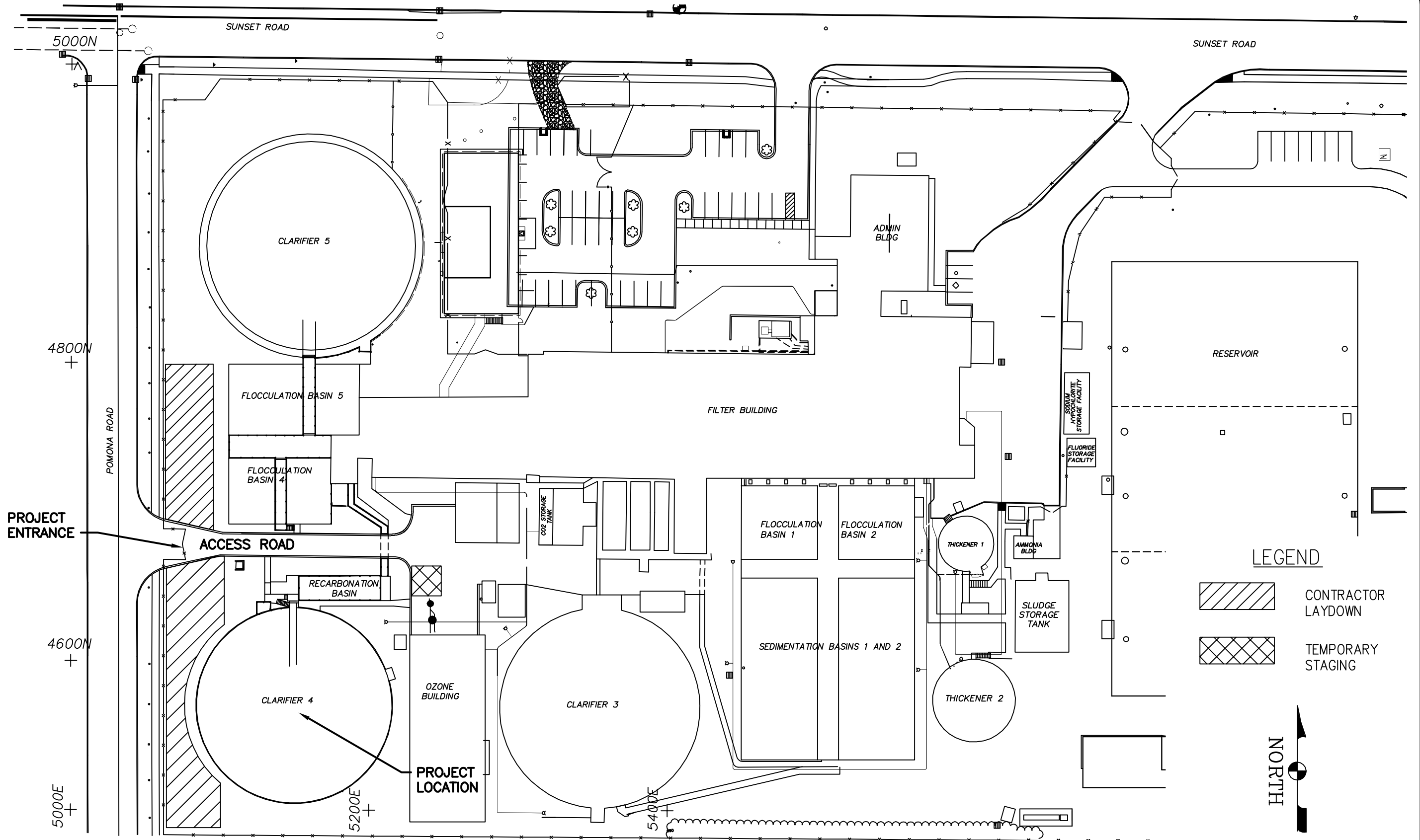
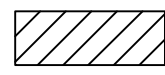
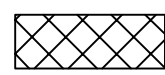


4/10/2014 8:24:41 AM - P:\1ER\31537\200-31537-14001\CAD\SHEETFILES\C-101.DWG - LESPERANCE, ANDREW



LEGEND

-  CONTRACTOR LAYDOWN
-  TEMPORARY STAGING



SITE PLAN

SCALE: 3/16"=1'-0"

TETRA TECH
 www.tetrattech.com
 710 AVIS DRIVE
 ANN ARBOR, MI 48108
 PHONE: (734) 665-6000 FAX: (734) 213-3003

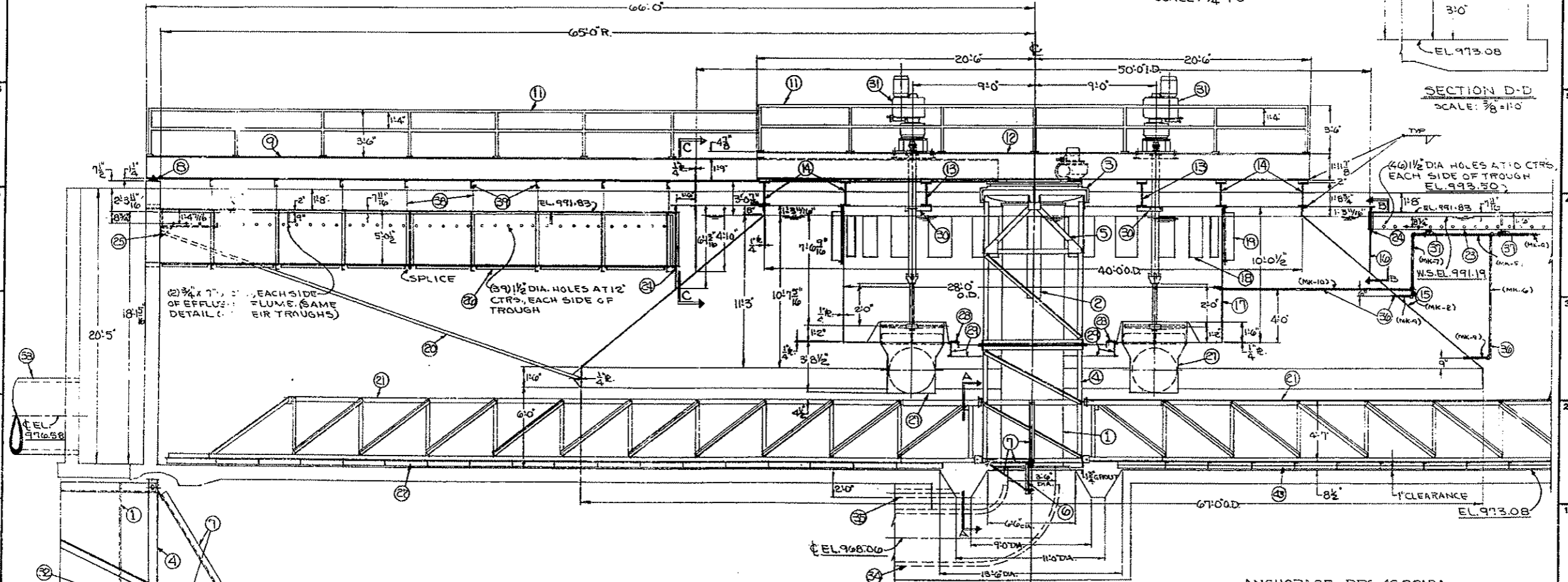
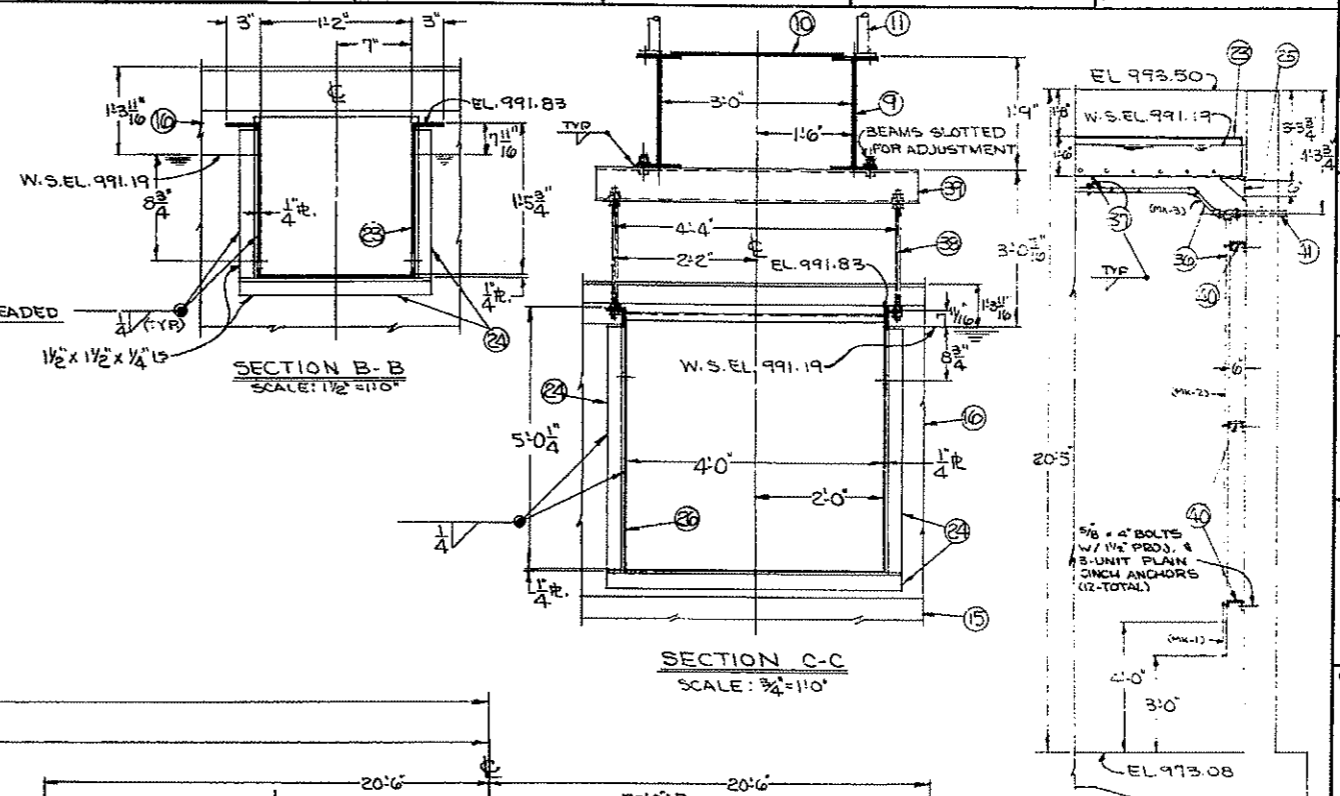
CITY OF ANN ARBOR
 ANN ARBOR WATER TREATMENT PLANT
 CLARIFIER #4 DRIVE REPLACEMENT

Project No.:	200-31537-14001
Date:	
Designed By:	EMS
Supplemental C001	

Bar Measures 1 inch

Copyright: Tetra Tech

- ASSEMBLY LIST**
- ①-CENTER PIER-4'-0" I.D. 3/8" WALL
 - ②-INLET PORTS, 4 AT 90°, 12" W. X 6'-0" DEEP
 - ③-COLLECTOR DRIVE, 80° SPUR GEAR, SEE DRG. 4320706
 - ④-DRIVE CAGE
 - ⑤-HANGERS- DRIVE CAGE
 - ⑥-CONCENTRATOR
 - ⑦-BRACES- CONCENTRATOR
 - ⑧-SLIDE PLATE- ACCESS BRIDGE, SEE DRG. 1510261
 - ⑨-ACCESS BRIDGE- 21WF-62"
 - ⑩-WALKWAY- 3/16" RAISED PATTERN FLOOR PLATE
 - ⑪-HANDRAIL- 1 1/2" PIPE
 - ⑫-BRIDGE- MAIN SUPPORT- 24WF-76"
 - ⑬-SUPPORT BEAMS- FLOC. SKIRT & MIXING WELL- 21WF-55"
 - ⑭-HANGERS- FLOC. SKIRT & MIXING WELL- 21WF-55"
 - ⑮-FLOCCULATION SKIRT- 1/4" PLATE
 - ⑯-COLLECTION TROUGH- 1/4" PLATE
 - ⑰-MIXING WELL- 1/4" PLATE
 - ⑱-PORT OPENINGS (24) 2'-0" W. X 3'-0" DEEP
 - ⑲-DIFFUSER GATE- SEE DRG. 1522737
 - ⑳-BRACE- 2" STD. WGT. PIPE, 4 AT 90°, SEE DRG. 1522703
 - ㉑-TRUSS ARM
 - ㉒-FLIGHT
 - ㉓-TROUGHS- 1/4" PLATE (19-REQD)
 - ㉔-WELDING ANGLES- TROUGH
 - ㉕-SUPPORT BRACKETS- TROUGH
 - ㉖-EFFLUENT FLUME- 4'-0" W. X 5'-0 1/4" DEEP X 1/4" PLATE
 - ㉗-RECIRCULATION TUBE, SEE DRG. 3522209
 - ㉘-BOTTOM SEAL, SEE DRG. 1521941
 - ㉙-STIFFENERS- 12U 20.7"
 - ㉚-MIXER BRACE- 4" X 4" X 3/8" L
 - ㉛-MIXERS- SEE DRG. 3518599
 - ㉜-GUIDE SHOE (4) SEE DRG. 1516025
 - ㉝-EFFLUENT PIPE- 60" R.C.P. (BY OTHERS)
 - ㉞-INFLUENT PIPE- 42" DIA. R.C.P. (BY OTHERS)
 - ㉟-DRAW-OFF LINE- 8" (BY OTHERS)
 - ㊱-SAMPLING LINES- 3/4" G.W.I. PIPE (BY W.P.E.)
 - ㊲-HANGERS- SAMPLING LINE
 - ㊳-HANGER RODS- EFFLUENT TROUGH- 3/4" DIA. THREADED
 - ㊴-HANGERS- EFFLUENT TROUGH- 6U-10.5"
 - ㊵-SUPPORT- SAMPLING LINE
 - ㊶-WALL SLEEVES- SAMPLING LINE (BY OTHERS)
 - ㊷-REMOVABLE WALKWAY PANEL
 - ㊸-BRASS SQUEEGEE (ADJ.)



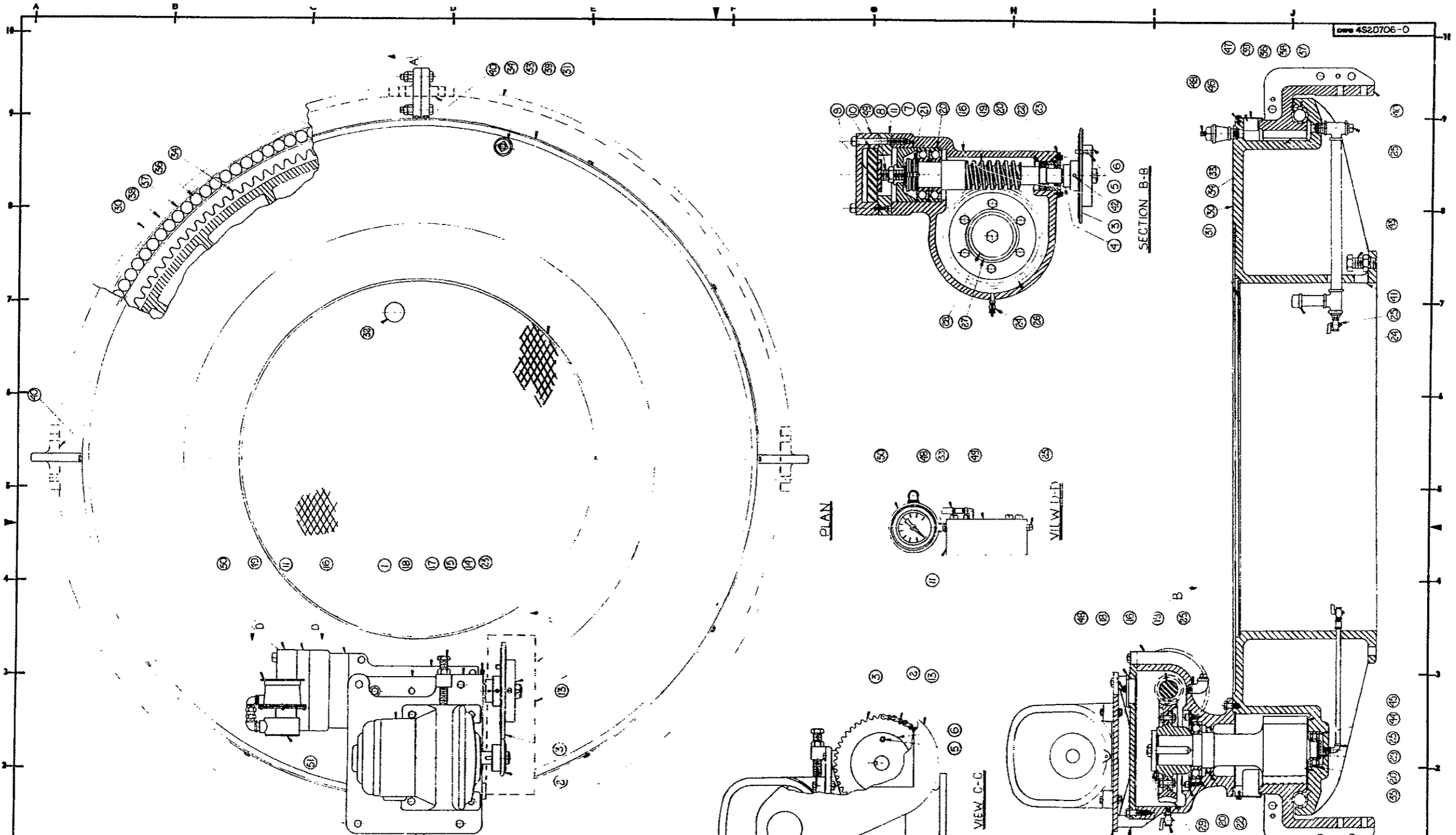
ANCHORAGE - DRG. 4522181
PLAN VIEW - DRG. 4322206

NO.	REVISIONS	DATE	BY	DATE	BY
1	REVISED FOR ENGINEERS	4-18-66	CMB		

SCALE AS NOTED	JOB 2871	ORDER 10298	FILE 4522205-1
----------------	----------	-------------	----------------

WALKER PROCESS EQUIPMENT INC. FURNISHES EQUIPMENT TO THE STATE OF MICHIGAN FOR THE TREATMENT OF WASTEWATER AT THE TREATMENT PLANT AT AUBURN HILLS, MICHIGAN. WALKER PROCESS EQUIPMENT INC. IS NOT RESPONSIBLE FOR ANY NECESSARY REPAIRS, ALTERATIONS, OR MODIFICATIONS TO THE EQUIPMENT REQUIRED TO ADAPT TO LOCAL CONDITIONS. WALKER PROCESS EQUIPMENT INC. DOES NOT WARRANT THE EQUIPMENT TO BE FREE FROM DEFECTS OR TO BE SUITABLE FOR ANY OTHER USE. WALKER PROCESS EQUIPMENT INC. IS NOT RESPONSIBLE FOR ANY DAMAGE TO PERSONS OR PROPERTY CAUSED BY THE USE OF THE EQUIPMENT. WALKER PROCESS EQUIPMENT INC. IS NOT RESPONSIBLE FOR ANY DAMAGE TO PERSONS OR PROPERTY CAUSED BY THE USE OF THE EQUIPMENT.

WALKER PROCESS EQUIPMENT INC.
AURORA, ILL. U.S.A.
130' x 130' CIRCULAR CLARIFLOW
TYPE - HC-RS
ANN ARBOR, MICHIGAN



- ASSEMBLY LIST**
- 1 GEAR MOTOR
 - 2 DRIVE SPROCKET (KEYED)
 - 3 DRIVEN SPROCKET
 - 4 SET COLLAR
 - 5 SHAFT PIN & THIMBLE
 - 6 SHEAR PIN COUPLING (KEYED)
 - 7 THRUST RING
 - 8 ADJUSTMENT SCREW
 - 9 HYDRAULIC PISTON
 - 10 O'RING & BACK-UP RING
 - 11 COVER SPACER
 - 12 STEEL ROLLER CHAIN - 1/2" PITCH
 - 13 CHAIN GUARD
 - 14 DRIVE MOUNTING PLATE
 - 15 CHAIN TIGHTENING SCREW
 - 16 WORM GEAR REDUCER HOUSING
 - 17 HOUSING COVER
 - 18 INSPECTION HOLE & OIL FILL COVER
 - 19 WORM & SHAFT
 - 20 BEARING
 - 21 LOCKWASHER
 - 22 OIL SEAL
 - 23 BEARING CAP
 - 24 OIL LEVEL
 - 25 OIL DRAIN
 - 26 WORM GEAR
 - 27 WORM GEAR HUB (KEYED)
 - 28 GEAR RETAINER
 - 29 BEARING RETAINER
 - 30 SPUR GEAR HOUSING
 - 31 HOUSING COVER (SPLIT)
 - 32 HAND HOLE
 - 33 OIL FILL
 - 34 SPUR GEAR (SPLIT)
 - 35 PINION
 - 36 BALL BEARING
 - 37 REPLACEABLE BEARING RACE
 - 38 LEFT SEAL
 - 39 DUST SHIELD (SPLIT)
 - 40 DRIVE GAGE ATTACHMENT LUG
 - 41 WATER DRAIN HOLE
 - 42 LUBRICATION FITTING
 - 43 LEVELING SCREWS 4-1/4"
 - 44 BEARING SUPPORT RING
 - 45 PINION WEARING PLATE
 - 46 DUST SHIELD SEAL
 - 47 GEAR HOLD-DOWN BLOCK
 - 48 AIR VENT
 - 49 OVERLOAD COVER
 - 50 INDICATING PRESSURE GAUGE
 - 51 JUNCTION BOX

NO.	DATE	BY	REVISIONS	REMARKS

THIS DRAWING IS THE PROPERTY OF WALKER PROCESS AND IS TO BE USED ONLY IN CONNECTION WITH THE PERFORMANCE OF WORK BY WALKER PROCESS.

REPRODUCTION IN WHOLE OR IN PART FOR ANY OTHER PURPOSE IS EXPRESSLY FORBIDDEN.

DRAWN CHECKED APPR.	DATE BY

80" PD SPUR GEAR DRIVE ASSEMBLY

SCALE 2" = 1'-0"

CONTRACT

DWG 4S20706-0

Walker Process Equipment Inc.
Aurora, Illinois

2871/10298
Rev. 5/21/65
Page 3

ANN ARBOR, MICHIGAN
WATER TREATMENT PLANT
SPECIFICATIONS
SLUDGE COLLECTOR - PIER-SUPPORTED TYPE

Application Sludge removal.
Tank Size 130'0" x 18'-1 5/16" to 18'-6"
Number of Units One (1)
Type RS

COLLECTOR MECHANISM

Collector Size 129'0" approx. diameter.
Speed 0.034 rpm. approx.
Drive
1 - Sterling Slo-Speed motor reducer, 37 RPM output with 1-1/2 HP, 3 phase, 60 cycle, 440 volt, totally enclosed, 55°C rise frame 224-23, with thermal protector.
1 - Roller chain drive, with 18 tooth drive and 48 tooth driven sprockets, 3/4" pitch steel roller chain, and 12 gauge chain guard.
1 - Shear pin coupling with hardened steel bushings, mounted on worm gear input shaft.
1 - Single reduction worm gear reducer, 38:1 ratio, of high tensile bronze gear bolted to Meehanite hub, with carburized hardened and ground alloy steel worm. Meehanite gear case. Spur gear pinion shaft keyed to worm gear hub.
1 - Turntable type main spur gear driving unit, including internal 80" P.D. spur gear, 5-1/2" face, 2 D.P., 160 teeth, of Meehanite G.C. Pinion 15-teeth, 7.5" P.D. of AISI 4140 alloy steel, heat treated.
1 - Turntable for main gear and collector mechanism support with 85" dia. bearing race, comprising 177 large dia. (1-1/2") hardened steel bearing balls, (SAE 52100 high carbon alloy steel inserts in annular raceways in the gear and turntable base. Oil bath protected by felt seal and dust shield. Gear case of Meehanite. Complete with oil fill, drain plugs and oil level indicator pipe. Drive turntable to mount to top of steel center support pier.
Support Assembly Entire mechanism suspended from heavy duty turntable ball bearing assembly mounted on center pier of steel. Center pier shall be 4'-6" x 3/8" plate.
Drive Cage 1 - Heavy duty fabricated steel drive cage, suspended from internal gear and bearing assembly. Minimum thickness of any member 1/4".