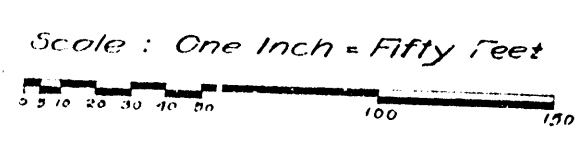


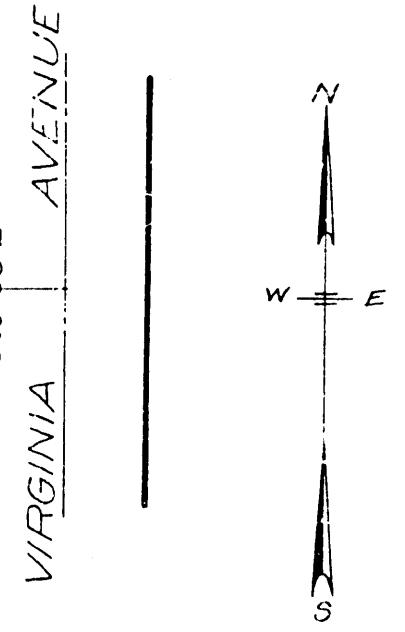
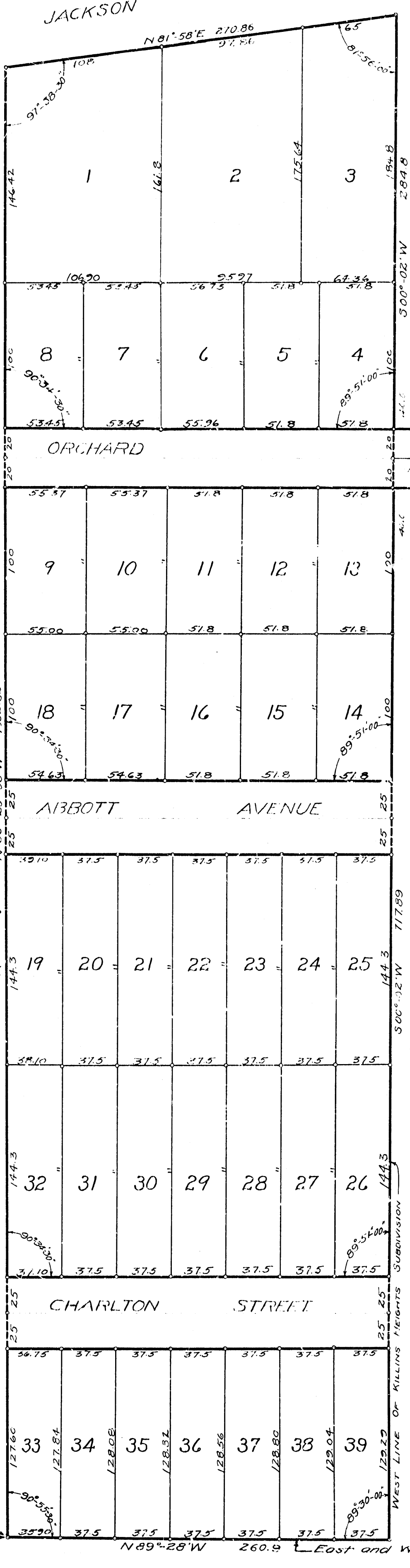
Get 1-1923  
Geo. L. Howard

### "MCMILLE'S SUBDIVISION"

OF  
LOT NO. 1 OF ASSESSOR'S PLAT NO. 4  
AND LOT 157 OF KILLINS HEIGHTS  
ADDITION "TO THE CITY OF ANN ARBOR,  
WASHTENAW COUNTY, MICHIGAN."



NOTE:— All dimensions are given in feet and decimals thereof.



**TAX CERTIFICATE**  
OFFICE OF COUNTY TREASURER  
WASHTENAW COUNTY MICHIGAN  
I hereby certify that there are no tax liens or titles held by the state on the lands described above, and that there are no tax liens or titles held by individuals on said lands, for the five years preceding the 23 day of July 1923 and 1/50th the taxes for said period of five years are fully paid as shown by the records of this office.  
*Geo. L. Howard*  
County Treasurer

**CERTIFICATE OF APPROVAL**  
By The Board of County Auditors  
Approved by the Board of County Auditors of Washtenaw County Michigan, this 6 day of July 1923.  
*W. D. Craver*  
Chairman  
*W. M. Fowler*  
*Edmund L. Brown*

**CERTIFICATE OF APPROVAL**  
By The Common Council.  
This plat was approved by the Common Council of the city of Ann Arbor, Washtenaw County, Michigan, at a meeting held July 9 1923.  
*Geo. L. Howard*  
City Clerk

**CERTIFICATE OF APPROVAL**  
By The Board of Public Works.  
This plat was approved by The Board of Public Works of the City of Ann Arbor, Washtenaw County, Michigan at a meeting held July 9 1923.  
*Geo. L. Howard*  
City Clerk

#### DEDICATION

KNOW ALL MEN BY THESE PRESENTS, That we, William B. McMillen and Carrie McMillen, his wife, and Reuben J. Hoffstetter, and Marie O. Hoffstetter, his wife, as proprietors have caused the land embraced in the annexed plat to be surveyed, laid out and platted, to be known as "MCMILLE'S SUBDIVISION" of Lot No. 1 of Assessor's Plat No. 4 and Lot 157 of KILLINS HEIGHTS ADDITION "TO CITY OF ANN ARBOR, WASHTENAW COUNTY, MICHIGAN, and that the streets as shown on said plat are hereby dedicated to the use of the public. Signed and Sealed in Presence of

*Henry M. Winkler*  
*W. L. Howard*  
*William B. McMillen* [L.S.]  
*Carrie McMillen* [L.S.]  
*Reuben J. Hoffstetter* [L.S.]  
*Marie O. Hoffstetter* [L.S.]

STATE OF MICHIGAN ss.  
County of Washtenaw

On this 12 day of July 1923 before me, a Notary Public in and for said county, personally came the above named William B. McMillen and Carrie McMillen, his wife and Reuben J. Hoffstetter and Marie O. Hoffstetter, his wife, known to me to be the persons who executed the above dedication, and acknowledged the same to be their free act and deed.

*Henry M. Winkler*  
Notary Public, Washtenaw Co., Michigan.  
My Commission expires August 5th, 1923.

#### DESCRIPTION

The land embraced in the annexed plat of "MCMILLE'S SUBDIVISION" of Lot No. 1 of Assessor's Plat No. 4 and Lot 157 of Killins Heights Addition "to the City of Ann Arbor, Michigan" is described as follows: beginning at a point in the East and West quarter line of Section 30, town two South, range six East, Meridian of Michigan 301.8 feet S. 89.28° E. from the center of Section 30; thence N 0°-23'-30" W, 1002.62 feet to Jackson Avenue; thence N 81°-58' E, 270.86 feet; thence S 0°-02' W, 284.8 feet; thence S 89°-49' E, 129.50 feet; thence S 0°-02' W, 40 feet; thence N 89°-49' W, 129.59 feet; thence S 0°-02' W, 717.89 feet; thence N 89°-28' W, 260.9 feet to the place of beginning.

#### SURVEYOR'S CERTIFICATE

I hereby certify that the plat hereon delineated is a correct one, and that permanent monuments consisting of iron pipes, one-half inch or more in diameter and eighteen inches or more in length, have been planted at points marked thus on as thereon shown at all angles in the boundaries of the land platted and at all intersections of streets.

*H. H. Howard*  
Registered Civil Engineer.

PLACE OF BEGINNING  
← 301.8 to center of Section 30

See Index for Page 668

See Index for Page 151