

# "PAULINE ACRES SUBDIVISION No 2"

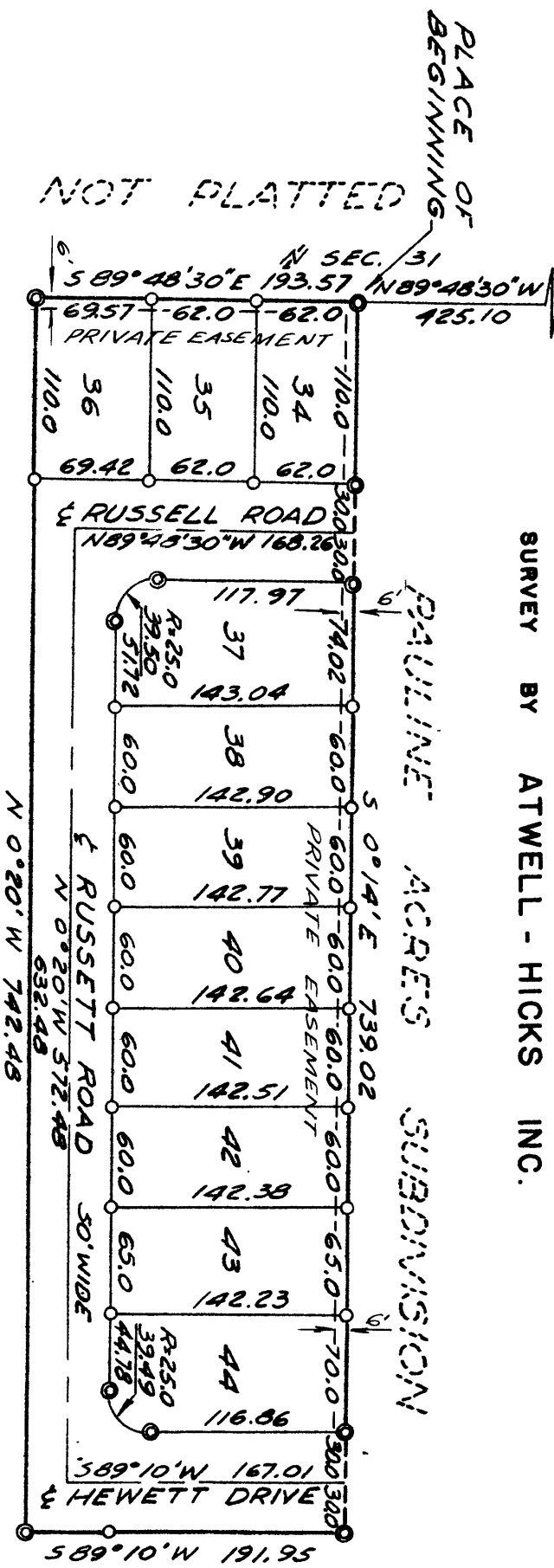
NE COR SEC 31  
725-R6E

A SUBDIVISION OF PART OF THE NE 1/4 OF SEC. 31, T 2 S.  
R 6 E, CITY OF ANN ARBOR, WASHTEWAW COUNTY, MICHIGAN

SCALE 1" = 100'

0 100 200 300

ALL DIMENSIONS IN FEET AND DECIMALS THEREOF  
ALL DISTANCES ON CURVES ARE ARC LENGTHS  
SURVEY BY ATWELL - HICKS INC.



NOT PLATTED

APPROVAL BY COUNTY PLAT BOARD

This plat was approved on the 19<sup>th</sup> day  
of February 1954 by the

Thomas A. FitzGerald

Thomas A. FitzGerald (County Register of Deeds)

J. Martin Rempp (Auditor)

Adolph F. Gross (Auditor)

Herbert G. Loeffler (Auditor)



DEDICATION

NOT PLATTED

SURVEYOR'S CERTIFICATE

KNOW ALL MEN BY THESE PRESENTS, that we, Carl J. Milano and Mary L. Milano, his wife, and Ernest A. Krause and Anna K. Krause, his wife, as proprietors, have caused the land embraced in the annexed plat to be surveyed, laid out and platted, to be known as "PAULINE ACRES SUBDIVISION NO. 2", a subdivision of part of the NE 1/4 of Sec. 31, T. 2 S., R. 6 E., City of Ann Arbor, Washtenaw County, Michigan, and that the roads and drive as shown on said plat are hereby dedicated to the use of the public.

Signed and Sealed in the Presence of:

Charles C. Menefee (Witness)  
Charles C. Menefee (Witness)

Mary L. Milano (L.S.)  
Mary L. Milano

Ernest A. Krause (L.S.)  
Ernest A. Krause

Anna K. Krause (L.S.)  
Anna K. Krause

ACKNOWLEDGMENT

STATE OF MICHIGAN ss.  
County of Washtenaw

On this 10<sup>th</sup> day of November 1954, before me, a Notary Public in and for said County, personally came the above named, Carl J. Milano, Mary L. Milano, Ernest A. Krause & Anna K. Krause known to me to be the persons who executed the above dedication, and acknowledged the same to be their free act and deed.

Charles C. Menefee  
Charles C. Menefee  
Notary Public, Washtenaw County  
My Commission expires Aug. 5, 1955

DESCRIPTION OF LAND PLATTED

The land embraced in the annexed plat of "PAULINE ACRES SUBDIVISION NO. 2", a subdivision of part of the NE 1/4 of Sec. 31, T. 2 S., R. 6 E., City of Ann Arbor, Washtenaw County, Michigan is described as follows:  
COMMENCING at the NE corner of Section 31, T. 2 S., R. 6 E., City of Ann Arbor, Washtenaw County, Michigan; thence along the north line of said section N 89°-48'-30" W 552.60 feet; thence continuing along the said line N 89°-48'-30" W 425.10 feet for the PLACE OF BEGINNING; thence S 0°-14'-00" E 739.02 feet; thence S 89°-10'-00" W 191.95 feet; thence N 0°-20'-00" W 742.48 feet; thence along the north line of Section 31, S 89°-48'-30" E 193.57 feet to the place of beginning, containing 11 lots numbered from 34 to 44.

MUNICIPAL APPROVAL

This plat was approved by the Common Council of the City of Ann Arbor at a meeting held December 15, 1954

Fred J. Looker (Clerk)

COPY  
Register's Office  
Washtenaw County, ss.

Plat of Pauline Acres Subdivision  
No. 2, City of Ann Arbor

was recorded this 9<sup>th</sup> day of  
December A.D., 1954 at 3 o'clock

P. M. in Liber 1A of PLAT  
Page 35  
Thomas C. FitzGerald  
Notary Public, Washtenaw County

ORIGINAL ON FILE  
M. Milano, Register

I hereby certify this copy is a true copy of map or plat forwarded the Register of Deeds for recording.

Date December 8, 1954  
Filed in Auditor General's Dept.

Examined and approved  
December 21, 1954

Date December 8, 1954  
Auditor General  
John B. Mast

Ed. H. H. H. H.  
Part Registrar

I hereby certify that the plat hereon delineated is a correct one and that permanent metal monuments consisting of bars not less than one-half inch in diameter and 36 inches in length, or shorter bars of not less than one-half inch in diameter lapped over each other at least 6 inches with an over-all length of not less than 36 inches, encased in a concrete cylinder at least 4 inches in diameter and 36 inches in depth have been placed at points marked thus (⊙) as thereon shown at all angles in the boundaries of the land platted, at all the intersections of streets, intersections of alleys, or of streets and alleys, and at the intersections of streets and alleys with the boundaries of the plat as shown on said plat.

Herbert S. Hicks  
Registered Land Surveyor and  
Professional Engineer #1715

CERTIFICATE OF APPROVAL BY THE CITY PLANNING COMMISSION

This plat was approved by the Planning Commission of the City of Ann Arbor, Michigan at a meeting held on the 23<sup>rd</sup> day of November 1954.

John E. Swisher, Jr. (Chairman)  
John E. Swisher, Jr.  
Sybil K. Bennett (Secretary)

COUNTY TREASURER'S CERTIFICATE

Office of County Treasurer, Washtenaw County.  
I hereby certify, that there are no tax liens or titles held by the State on the lands described hereon, and that there are no tax liens or titles held by individuals on said lands, for the five years preceding the 24<sup>th</sup> day of November 1954 and that the taxes for said period of five years are all paid, as shown by the records of this office.  
This certificate does not apply to taxes, if any, now in process of collection by township, city or village collecting officers.

W. F. Verner (County Treasurer)

CITY CLERK'S CERTIFICATE

Office of City Clerk, City of Ann Arbor  
I hereby certify that the width and depth of lots shown on this plat are in compliance with rules and regulations of the City of Ann Arbor and the requirements as to width and depth of Section 30 of Act 172, Public Act of 1929, as amended by Act 186, Public Act of 1954.

Fred J. Looker (Clerk)

MUNICIPAL APPROVAL

This plat was approved by the Board of Public Works of the City of Ann Arbor at a meeting held December 15, 1954

Fred J. Looker (Clerk)