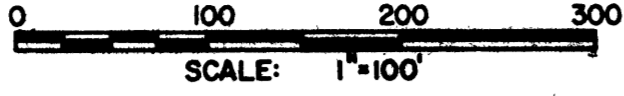


# LAUREL MEADOW

A SUBDIVISION OF PART OF THE SE 1/4 OF SECTION 31, T.2 S.,  
 R.6 E., CITY OF ANN ARBOR, WASHTENAW COUNTY, MICHIGAN



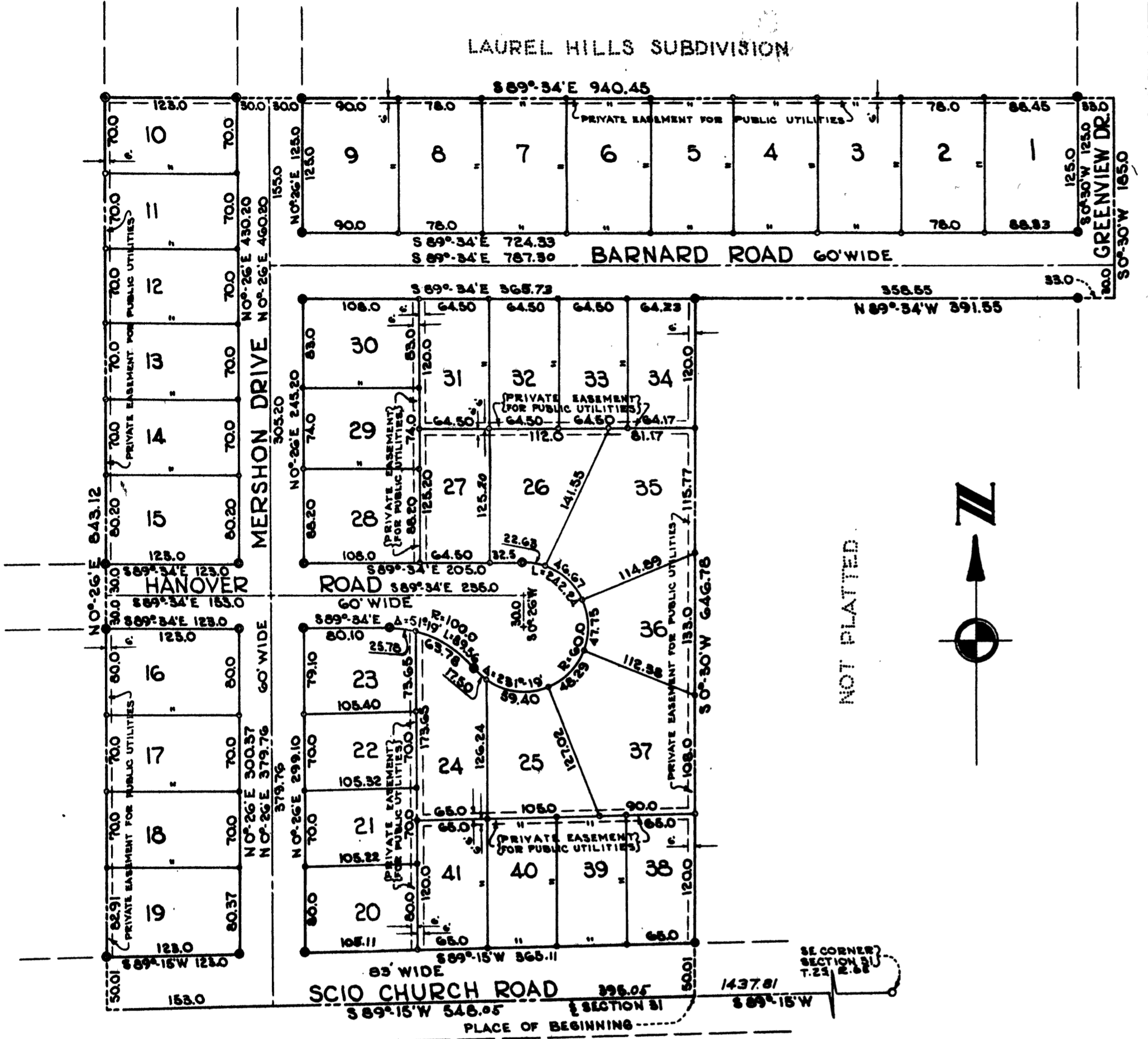
ALL DIMENSIONS IN FEET AND DECIMALS THEREOF  
 ALL DIMENSIONS ON CURVES ARE ARC LENGTHS  
 SURVEY BY ATWELL-HICKS, INC.

## DESCRIPTION OF LAND PLATTED

The land embraced in the annexed plat of LAUREL MEADOW, a subdivision of part of the SE 1/4 of Section 31, T.2 S., R.6 E., City of Ann Arbor, Washtenaw County, Michigan is described as follows:

Commencing at the SE corner of Section 31, T.2 S., R.6 E., Ann Arbor Township, Washtenaw County, Michigan; thence along the south line of said section S 89°-15' W 1437.81 feet for a PLACE OF BEGINNING; thence continuing S 89°-15' W 548.05 feet; thence N 0°-26' E 843.12 feet; thence S 89°-34' E 940.45 feet; thence S 0°-30' W 185.00 feet; thence N 89°-34' W 391.55 feet; thence S 0°-30' W 646.78 feet to the place of beginning, being a part of the SE 1/4 of Section 31 and containing 41 lots numbered 1 through 41 inclusive.

VERNON DOWNS SUBDIVISION



NOT PLATTED

NOT PLATTED

NOT PLATTED

## SURVEYOR'S CERTIFICATE

I hereby certify that the plat hereon delineated is a correct one and that permanent metal monuments consisting of bars not less than one-half inch in diameter and 36 inches in length, or shorter bars of not less than one-half inch in diameter lapped over each other at least 6 inches with an overall length of not less than 36 inches, encased in a concrete cylinder at least 4 inches in diameter and 36 inches in depth have been placed at points marked thus (©) as shown at all angles in the boundaries of the land platted, at all the intersections of lines of streets, and at the intersections of lines of streets with the boundaries of the plat as shown on said plat.

*Robert J. Sagow*  
 Robert J. Sagow  
 Registered Land Surveyor #6998

## CERTIFICATE OF APPROVAL BY THE CITY PLANNING COMMISSION

This plat was approved by the Planning Commission of the City of Ann Arbor, Michigan at a meeting held on the 23<sup>rd</sup> day of June, 1959.

*Dean Coston*  
 Dean Coston, Chairman  
*John E. Swisher Jr.*  
 John E. Swisher Jr., Secretary

## DEDICATION

KNOW ALL MEN BY THESE PRESENTS, that we Raymond Barnard and Ethel Barnard, his wife, John C. Johnson and Olive J. Johnson, his wife, and Arbor Heights Building Corporation, a Michigan Corporation by S. Brooks Barron, President, and Thomas A. Gallagher, Secretary, as proprietors, have caused the land embraced in the annexed plat to be surveyed, laid out and platted to be known as LAUREL MEADOW, a subdivision of part of the SE 1/4 of Section 31, T.2 S., R.6 E., City of Ann Arbor, Washtenaw County, Michigan and that the roads and drives as shown on said plat are hereby dedicated to the use of the public.

*Raymond Barnard*  
 Raymond Barnard  
*Ethel Barnard*  
 Ethel Barnard  
*John C. Johnson*  
 John C. Johnson  
*Olive J. Johnson*  
 Olive J. Johnson  
*S. Brooks Barron*  
 S. Brooks Barron, Pres.  
*Thomas A. Gallagher*  
 Thomas A. Gallagher, Sec.

## ACKNOWLEDGMENT

STATE OF MICHIGAN )  
 County of Washtenaw ) ss.  
 On this 9<sup>th</sup> day of June, 1959, A.D., 1959, before me, a Notary Public in and for said County, personally came the above named Raymond Barnard, Ethel Barnard, John C. Johnson, and Olive J. Johnson known to me to be the persons who executed the above dedication, and acknowledged the same to be their free act and deed.  
*Beulah J. Fuller*  
 Notary Public, Washtenaw County, Michigan  
 My commission expires July 11, 1960.

## CERTIFICATE OF MUNICIPAL APPROVAL

This plat was approved by the Common Council of the City of Ann Arbor at a meeting held June 29, 1959, and that the width of lots is in compliance with requirements of Section 30, Act 172, of 1929, as amended.

*Fred J. Looker*  
 Fred J. Looker, Clerk

## COUNTY TREASURER'S CERTIFICATE

Office of County Treasurer, Washtenaw County  
 I hereby certify, that there are no tax liens or titles held by the State on the lands described hereon, and that there are no tax liens or titles held by individuals on said lands, for the five years preceding the 20<sup>th</sup> day of June, 1959, and that the taxes for said period of five years are all paid, as shown by the records of this office.

*W. F. Verner*  
 W. F. Verner (County Treasurer)

## ACKNOWLEDGMENT

STATE OF MICHIGAN )  
 County of Washtenaw ) ss.  
 On this 9<sup>th</sup> day of June, 1959, A.D., 1959, before me, a Notary Public in and for said County, appeared S. Brooks Barron and Thomas A. Gallagher, to me personally known, who being each by me duly sworn did say that they are the President and Secretary respectively of the Arbor Heights Building Corporation, a Michigan Corporation, and that said instrument was signed in behalf of said corporation by authority of its Board of Directors and the said S. Brooks Barron and Thomas A. Gallagher acknowledged said instrument to be the free act and deed of said corporation.  
*Elvie R. Adcox*  
 Notary Public, Washtenaw County, Michigan  
 My Commission expires Aug. 6, 1961.

## APPROVAL BY COUNTY PLAT BOARD

This plat was approved on the 9<sup>th</sup> day of June, 1959 by the Washtenaw County Plat Board.

*Patricia Newkirk Hardy*  
 Patricia Newkirk Hardy (County Register of Deeds)  
*Virginia Strabic*  
 Virginia Strabic (Deputy)  
*J. Martin Rempp*  
 J. Martin Rempp (Auditor)  
*Herbert G. Loeffler*  
 Herbert G. Loeffler (Auditor)  
*John H. Flook*  
 John H. Flook (County Drain Commissioner)

I hereby certify this copy is a true copy of map as plat forwarded the Register of Deeds for recording.  
 Date July 9, 1959  
 FILED IN AUDITOR GENERAL'S DEPT.  
 Date July 13, 1959  
 EXAMINED AND APPROVED  
 Date July 9, 1959  
*Frank S. MacKay*  
 Auditor General

CCP  
 Register's Office  
 Washtenaw County  
 Plat of Laurel Meadow  
 was Recorded this 10<sup>th</sup> day of July, A.D., 1959 at 12:00 o'clock P.M. in Liber 14 of plate on Page 59  
*Patricia N. Hardy*