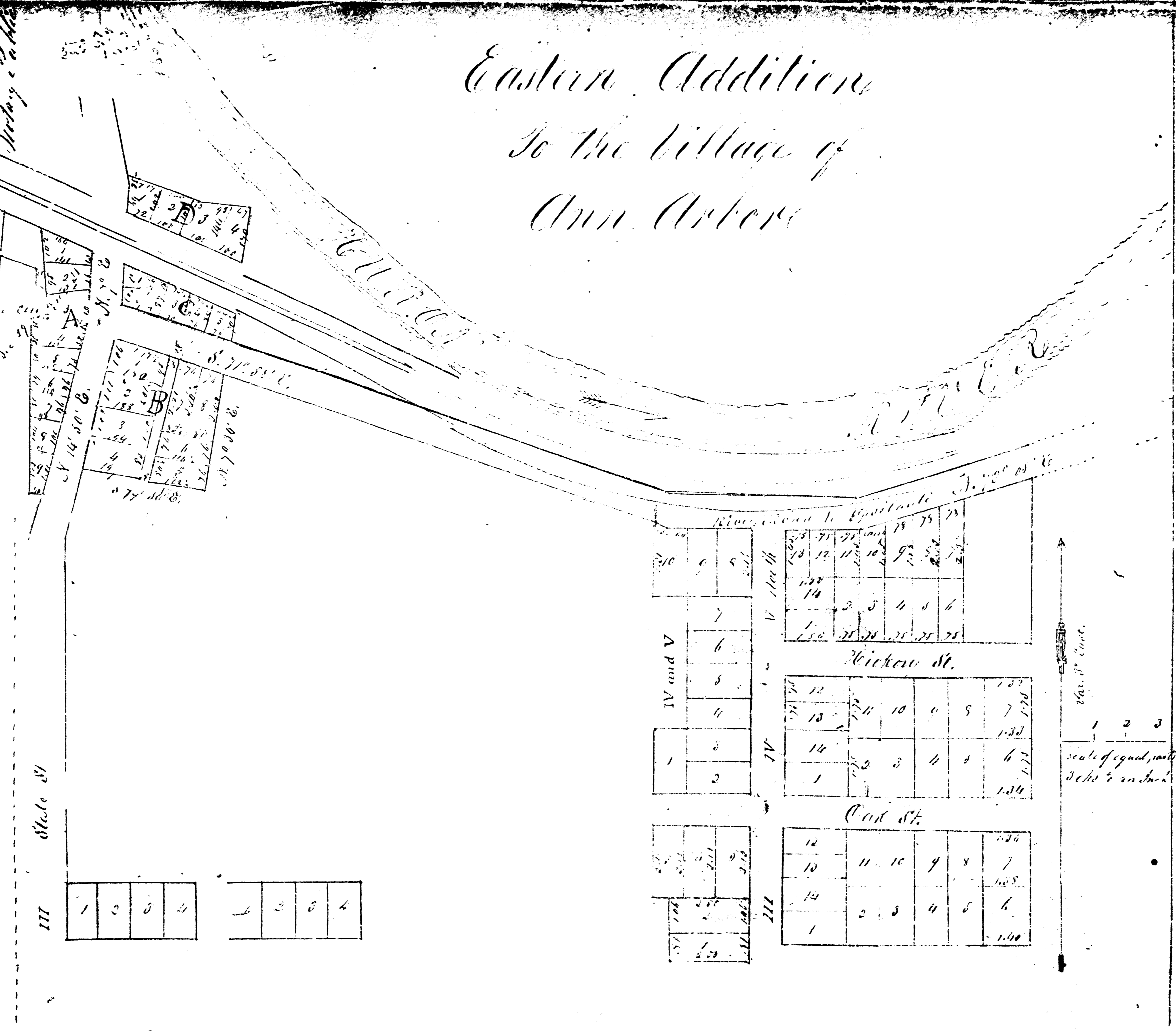


State of Michigan } W. Shesby certify that on this 7<sup>th</sup> day of August  
 County of Washtenaw } A. D. 1836. E. W. Morgan & Wm. C. Bradford  
 Trustees of the Ann Arbor Land Company; Philip McHenry & George  
 W. Shesby, were personally examined before me, that they ex-  
 ecuted the within map or plat given under my hand & seal, in witness  
 whereof I have hereunto set my hand & seal of office at Ann Arbor  
 Michigan this 7<sup>th</sup> day of August 1836.



*Eastern Addition  
 To the Village of  
 Ann Arbor*

For Decree see Liber 309. 588.

For Decree see Liber 251 page 455  
 For original map see Liber 1504 page 305

PLAT NO. 1  
 MAPS AND  
 EXHIBITS  
 687-1-5  
 08/07/1839  
 1 of 2

Register Office & Recorder and Recorder this 7<sup>th</sup> day of  
 Washington Co. N.Y. August 20<sup>th</sup> 1859 at 1<sup>st</sup> of the clock P.M. in  
 the presence of J. H. B. & page 480. C. H. Holliman Register

Block 1 North  
 Block 1 South



Note. The regular lots are 14 by 8 rods  
 the fractional lots have the length  
 of the lines marked in  
 chains and links.

Surveyed in June 1859.

by  
 John H. ...

For Right of Way See Liber 1504 Page 306  
 For Right of Way See Liber 1542 Page 497