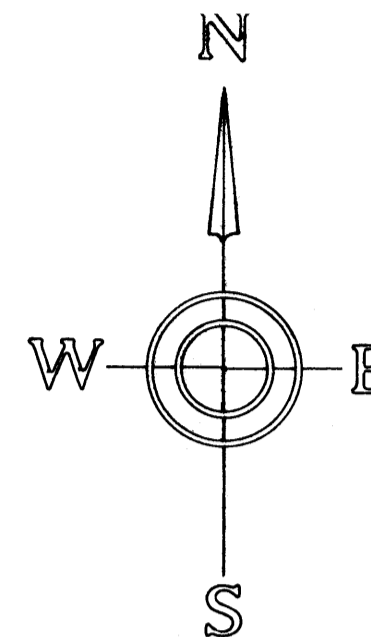
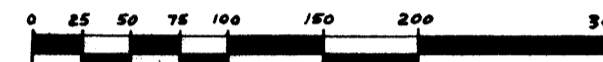


# RIVERSIDE HILLS SUBDIVISION NO. 2

A SUBDIVISION OF PART OF THE S.W. 1/4, SECTION 26; N.E. 1/4, SECTION 34;  
AND THE N.W. 1/4, SECTION 35; T.2S., R.6E., CITY OF ANN ARBOR,  
WASHTENAW COUNTY, MICHIGAN

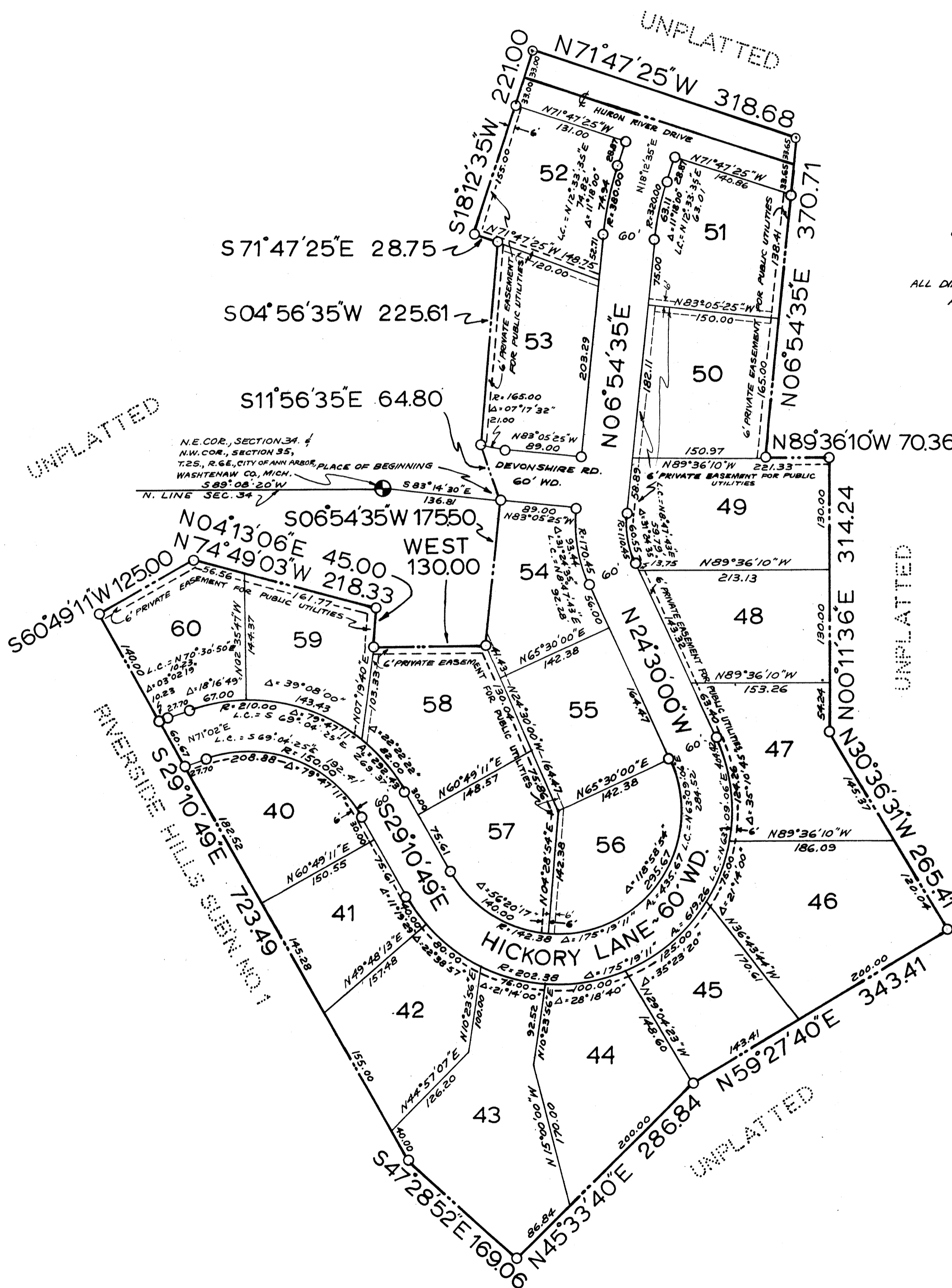


SCALE ~ 1" = 100'



ALL DIMENSIONS ARE SHOWN IN FEET & DECIMALS THEREOF.  
ALL CURVE DIMENSIONS ARE ARC LENGTHS.

PREPARED BY ~  
AMERICAN ENGINEERING CO.  
CIVIL ENGRS. & SURVEYORS  
ANN ARBOR, MICHIGAN



PO359002 2 OF 2  
RIVERSIDE HILLS SUBDIVISION NO. 2  
LIBER: 17 PAGE: 25-26 10/20/1964

# RIVERSIDE HILLS SUBDIVISION NO. 2

A SUBDIVISION OF PART OF THE S.W. 1/4, SECTION 26; N.E. 1/4, SECTION 34 AND THE N.W. 1/4, SECTION 35; T.2S., R.6E., CITY OF ANN ARBOR, WASHTENAW COUNTY, MICHIGAN

### DESCRIPTION OF LAND PLATTED

The land embraced in the annexed plat of RIVERSIDE HILLS SUBDIVISION NO. 2 A Subdivision of Part of the S.W. 1/4, Section 26; N.E. 1/4, Section 34; and the N.W. 1/4, Section 35; T.2 S., R.6 E., City of Ann Arbor, Washtenaw County, Michigan, is described as follows: Commencing at the N.W. corner of Section 35, T.2.S., R.6 E. City of Ann Arbor, Washtenaw County, Michigan; thence S83°14'30"E 136.81 ft. to a Place of Beginning; thence S06°54'35"W 175.50 ft; thence West 130.00 ft; thence N04°13'06"E 45.00 ft; thence N74°49'03"W 218.33 ft; thence S60°49'11"W 125.00 ft; thence S29°10'49"E 723.49 ft; thence S47°28'52"E 169.06 ft; thence N45°33'40"E 286.84 ft; thence N59°27'40"E 343.41 ft; thence N30°36'31"W 265.41 ft; thence N00°11'36"E 314.24 ft; thence N89°36'10"W 70.36 ft; thence N06°54'35"E 370.71 ft; thence N71°47'25"W 318.88 ft; thence S18°12'35"W 221.00 ft; thence S71°47'25"E 28.75 ft; thence S04°56'35"W 225.61 ft; thence S11°56'35"E 64.80 ft. to the Place of Beginning. Containing 21 lots numbered 40 through 60 inclusive.

(THE NORTH LINE OF SEC 34, T.2S., R.6E. BEARING N49°03'20"E)

### DEDICATION

KNOW ALL MEN BY THESE PRESENTS that we, Albert Duckek and Emma Duckek, his wife, as proprietors, have caused the land embraced in the annexed plat to be surveyed, laid out and platted to be known as RIVERSIDE HILLS SUBDIVISION NO. 2, A Subdivision of Part of the S.W. 1/4, Section 26; N.E. 1/4, Section 34; and the N.W. 1/4, Section 35; T.2 S., R.6 E., City of Ann Arbor, Washtenaw County, Michigan, and that the streets and roads as shown on said plat are hereby dedicated to the use of the public and the easements as indicated on said plat are not dedicated to the public but reserved for public utilities and any other use designated hereon and no permanent structures are to be located within said easement.

Signed in the Presence of:

Witness: Beatrice M. Knowles  
Beatrice M. Knowles  
Witness: Herbert A. Newman  
Herbert A. Newman

Albert Duckek  
Albert Duckek  
3208 East Huron River Drive  
Ann Arbor, Michigan.  
Emma Duckek  
Emma Duckek  
3208 East Huron River Drive  
Ann Arbor, Michigan.

### SURVEYOR'S CERTIFICATE

I hereby certify that the plat hereon delineated is a correct one and that permanent metal monuments consisting of bars not less than 1/2 inch in diameter and 36 inches in length, encased in concrete cylinders at least four inches in diameter and 36 inches in depth, have been set at all points marked thus (o) as thereon shown at all angles in the boundaries of the land platted and at all intersections of streets with the boundaries of the plat as shown on said plat. All dimensions are given in feet and decimals thereof.

Murray J. Knowles, Jr.  
Murray J. Knowles, Jr.  
Reg. Civil Eng. & Land Surveyor  
206 S. Main St. #5542  
Ann Arbor, Michigan.

### ACKNOWLEDGMENT

STATE OF MICHIGAN }  
County of Washtenaw } ss

On this 19th day of Oct A.D. 1964, before me Janet M. Robson, a Notary Public in and for said County, appeared Albert Duckek and Emma Duckek, his wife, known to me to be the persons who executed the above dedication and who each by me being duly sworn did acknowledge the same to be their free act and deed.

Janet M. Robson  
Notary Public, Washtenaw County, Mich.  
Janet M. Robson

My Commission expires April 12, 1966

Janet M. Robson  
My Commission Expires  
April 12, 1966

I hereby certify this copy is a true copy of map...  
Date: October 19, 1964  
FILED IN AUDITOR GENERAL'S DEPT.  
Date: October 23, 1964  
EXAMINED AND APPROVED  
Date: October 19, 1964

Billie S. Farwell  
BILLIE S. FARWELL  
AUDITOR GENERAL  
By Richard E. Lomax  
Richard E. Lomax - Public Examiner

COPY  
Register's Office  
Washtenaw County, } S.S.  
Plat of Riverside Hills  
Subdivision No. 2  
was Recorded this 20th day of  
October A.D., 1964 at 11:25 O'clock  
A.M. in Liber 17 of plata  
on Page 25 and 26  
Patricia Newkirk Hardy  
Register of Deeds  
Original  
By: Constance R. Forman - Sp.

### MUNICIPAL APPROVAL

This Plat was approved by the Common Council of the City of Ann Arbor, at a Meeting held on the 31 day of August 1964.

Fred J. Looker  
Fred J. Looker, Clerk

### APPROVAL BY THE COUNTY PLAT BOARD

This plat was approved on the 24th day of September 1964 by the Washtenaw County Plat Board.

Patricia Newkirk Hardy  
Patricia Newkirk Hardy  
(County Register of Deeds)  
J. Martin Kemp  
J. Martin Kemp  
(Auditor)  
Herbert G. Loeffler  
Herbert G. Loeffler  
(Auditor)  
John H. Flook  
John H. Flook  
County Drain Commissioner  
John P. Cook  
John P. Cook  
(Auditor)

### CITY CLERK'S CERTIFICATE

I hereby certify that the width and depth of lots shown on this plat conform to the rules and regulations of the City of Ann Arbor and the requirements of Section 30, Act 172, P.A. 1929, as amended by Act 186 P.A. 1954 and that this plat conforms to the provisions of Sec. 19 A as amended by act 150 P.A. 1961.

Fred J. Looker  
Fred J. Looker, Clerk

### CERTIFICATE OF APPROVAL BY THE CITY PLANNING COMMISSION

This plat was approved by the Planning Commission of the City of Ann Arbor, Michigan, at a meeting held on the 18th day of August, 1964.

Joseph W. Edwards  
Joseph W. Edwards (Chairman)  
Richard W. Lavely  
Richard W. Lavely, (Secretary)

### COUNTY TREASURER'S CERTIFICATE

Office of County Treasurer  
Washtenaw County, Mich.

I hereby certify that there are no tax liens or titles held by the State on the lands described hereon and that there are no tax liens or titles held by individuals on said lands for five years preceding the 19th day of Sept, 1964, and that the taxes for said period of five years are paid, as shown by the records of this office. This certificate does not apply to taxes, if any, now in process of collection by County or City collecting officers.

Sylvester A. Leonard  
Sylvester A. Leonard, (County Treasurer)