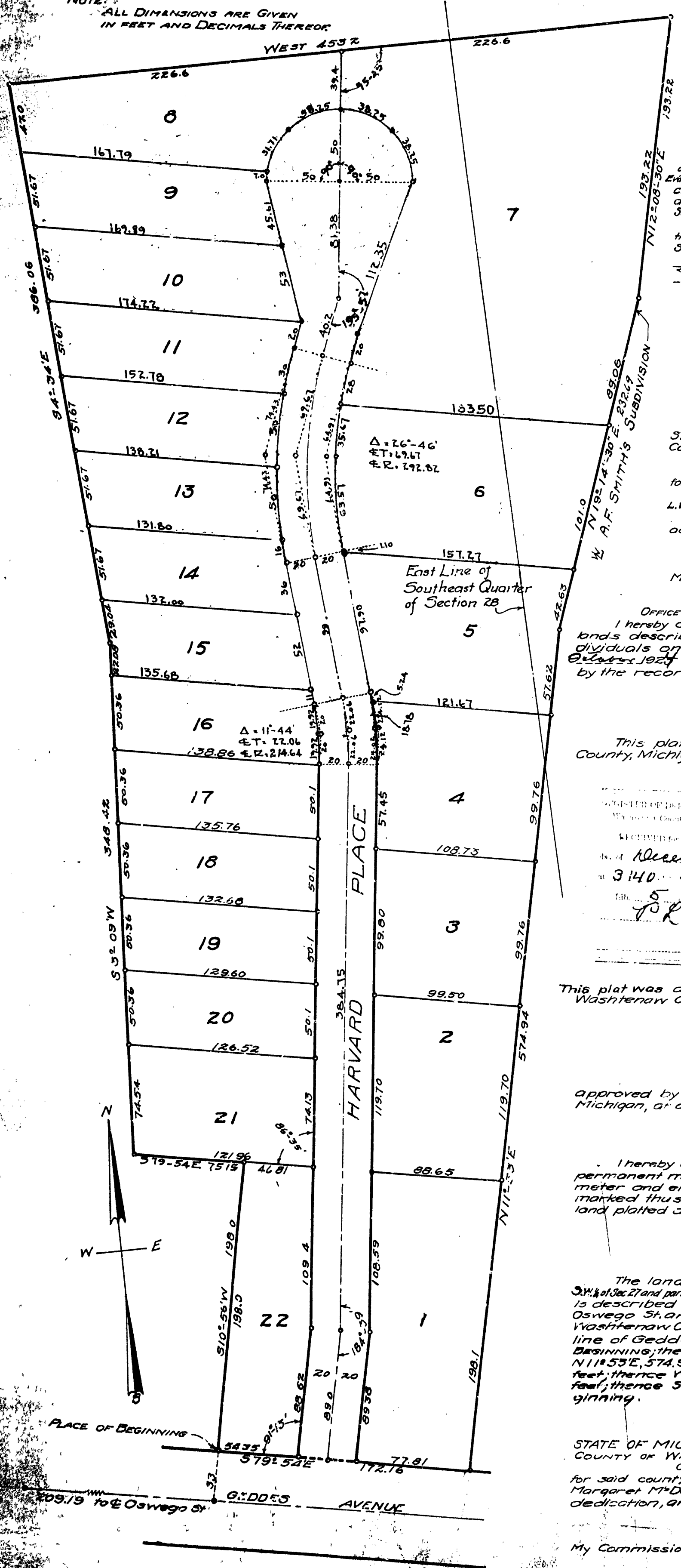


# JAMES H. McDONALD'S SUBDIVISION

NOTE: ALL DIMENSIONS ARE GIVEN IN FEET AND DECIMALS THEREOF

PART OF THE W 1/2 OF THE SW 1/4  
OF  
SECTION 27 AND PART OF THE E 1/2  
OF  
THE SE 1/4 OF SECTION 28  
WASHTENAW COUNTY, MICHIGAN  
IN THE CITY OF ANN ARBOR  
SCALE: ONE INCH = FIFTY FEET

APPROVED  
Dec 18 1923  
J. R. H. H. H.



DEDICATION

KNOW ALL MEN BY THESE PRESENTS That we Elizabeth McDonald Smith, and Margaret McDonald Parr and James H. McDonald and Helen H. McDonald, his wife, and George E. Myers and Harriet B. Myers, his wife, and Charles C. Fries, her husband, as proprietors, have caused the land embraced in the annexed plat to be surveyed, laid out and platted, to be known as JAMES H. McDONALD'S SUBDIVISION, a part of the W 1/2 of the SW 1/4 of Sec. 27 and part of the E 1/2 of the SE 1/4 of Sec. 28, WASHTENAW CO., MICH., and that the streets as shown on said plat are hereby dedicated to the use of the public.

WITNESSED AND SEALED IN PRESENCE OF

Elizabeth M. McDonald Smith	63
Margaret M. McDonald Parr	64
James H. McDonald	65
Helen H. McDonald	66
George E. Myers	67
Harriet B. Myers	68
Charles C. Fries	69

STATE OF MICHIGAN } ss.  
County of Washtenaw

On this 17th day of Oct 1923 before me, a Notary Public in and for said county, personally came the above named James H. McDonald and Margaret M. McDonald Parr, Arthur Emma Wood and still living George E. Myers and Harriet B. Myers, Charles C. Fries her husband, known to me to be the persons who executed the above dedication and acknowledged the same to be their free act and deed.

My Commission Expires Aug 30 1924

Notary Public, Washtenaw County, Michigan.

TAX CERTIFICATE

OFFICE OF THE COUNTY TREASURER, WASHTENAW COUNTY, MICHIGAN

I hereby certify that there are no tax liens or titles held by the State on the lands described below and that there are no tax liens or titles held by individuals on said lands for the five years preceding the 1st day of October 1923 and that the taxes for said period of five years are paid as shown by the records of this office.

Notary Public, Washtenaw County, Michigan.

CERTIFICATE OF APPROVAL

By the Board of County Auditors

This plat was approved by the Board of County Auditors of Washtenaw County, Michigan, this 19th day of November 1923.

Chairman: William M. Fowler

Clerk: Charles C. Brown

CERTIFICATE OF APPROVAL

By the Board of Public Works

This plat was approved by the Board of Public Works of the City of Ann Arbor, Washtenaw County, Michigan, at a meeting held on the 13th day of November 1923.

Clerk: J. R. H. H. H.

CERTIFICATE OF APPROVAL

By the Common Council

This plat was approved by the Common Council of the City of Ann Arbor, Washtenaw County, Michigan, at a meeting held on the 30th day of October 1923.

Clerk: J. R. H. H. H.

SURVEYOR'S CERTIFICATE

I hereby certify that the plat hereon delineated is a correct one, and that permanent monuments, consisting of iron pipes one-half inch or more in diameter and eighteen inches or more in length, have been planted at points marked thus O as thereon shown at all angles in the boundaries of the land platted and at all intersections of streets.

Notary Public, Wayne County, Michigan.

DESCRIPTION

The land embraced in the annexed plat of JAMES H. McDONALD'S SUBDIVISION, a part of the W 1/2 of the SW 1/4 of Sec. 27 and part of the SE 1/4 of Sec. 28, WASHTENAW COUNTY, MICHIGAN, IN THE CITY OF ANN ARBOR is described as follows: Commencing at the intersection of the center line of Oswego St. and the center line of Geddes Ave. in the City of Ann Arbor, Washtenaw County, Michigan; thence S79°54'E, 209.19 feet along the center line of Geddes Ave.; thence N10°56'W, 33 feet to an iron pipe for a PLACE OF BEGINNING; thence S79°54'E, 172.16 feet along the north line of Geddes Ave.; thence N11°53'E, 574.94 feet; thence N19°14'30"E, 232.69 feet; thence N12°08'30"E, 195.22 feet; thence West 45°34'E, 356.06 feet; thence S34°09'W, 348.42 feet; thence S79°54'E, 151.15 feet; thence S10°56'W, 198.0 feet to the place of beginning.

STATE OF MICHIGAN } ss.  
County of Wayne

On this 22nd day of August 1923 before me, a Notary Public in and for said county, personally came the above named Elizabeth McDonald Smith and Margaret McDonald Parr known to me to be the persons who executed the above dedication, and acknowledged the same to be their free act and deed.

My Commission Expires December 7, 1924

Notary Public, Wayne County, Michigan.