

ORIGINAL
PLAT OF

EASTOVER HILLS No. 1

A SUBDIVISION

ON THE NORTHEAST QUARTER OF SECTION 4, IN
TOWN 3 SOUTH, RANGE 6 EAST, MERIDIAN OF MICHIGAN,

PITTSFIELD TOWNSHIP,
WASHTENAW COUNTY, MICHIGAN.

Scale: One Inch = One Hundred Feet.



Note: All dimensions are given
in feet and decimals thereof.

May 17 1922
J. R. Harvey
SURVEYOR GENERAL

SURVEYOR'S CERTIFICATE.

I hereby certify that the plat hereon delineated is a correct one and that permanent monuments, consisting of iron pipes one half inch or more in diameter and fifteen inches or more in length, have been planted at points marked thus o as thereon shown at all angles in the boundaries of the land platted, and at all intersections of streets or streets and alleys.

Harry H. Otwell
Registered Civil Engineer.

CERTIFICATE OF APPROVAL BY THE TOWNSHIP BOARD.

This plat was approved by the Township Board of Pittsfield Township, Washtenaw County, Michigan at a meeting held May 13, 1922.

Arthur H. Keminger
Clerk.

DEDICATION.

KNOW ALL MEN BY THESE PRESENTS, That I, Clellie L. Anderson, as sole proprietor have caused the land embraced in the annexed plat to be surveyed, laid out, and platted, to be known as Eastover Hills No. 1, a subdivision on the northeast quarter of section 4, in town 3 south, range 6 east, Meridian of Michigan, Pittsfield Township, Washtenaw County, Michigan and that the streets and alleys as shown on said plat are hereby dedicated to the use of the public.

Signed and Sealed in Presence of
Clellie L. Anderson

STATE OF MICHIGAN, ss.
County of Washtenaw }

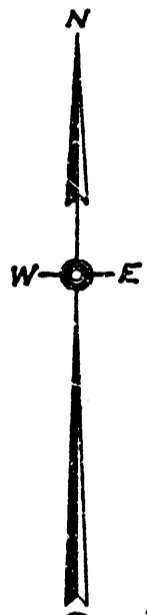
On this 11th day of May 1922 before me, a Notary Public in and for said county, personally came the above named Clellie L. Anderson, known to me to be the person who executed the above dedication, and acknowledged the same to be her free act and deed.

Notary Public, Washtenaw Co., Mich.

My Commission expires March 19, 1923.

DESCRIPTION.

The land embraced in the annexed plat of Eastover Hills No. 1, a subdivision on the northeast quarter of section 4, in town 3 south, range 6 east, Meridian of Michigan, Pittsfield Township, Washtenaw County, Michigan is described as follows: Commencing at the southeast corner of section 35 in T. 2 S., R. 6 E.; thence West on the town line 399.20 feet to the northeast corner of Eastover Hills Subdivision; thence South on the east line of said subdivision 294.00 feet to its intersection with the center line of Anderson Avenue; thence West on said center line 577.5 feet to the east line of lot 29 of Eastover Hills Subdivision produced north; thence South on said line of lot 29 294.0 feet to the south line of Eastover Hills Subdivision; thence West on the south line of Eastover Hills Subdivision 552.8 feet to its intersection with the center line of Packard Street; thence S. 25° 16' E. on the center line of Packard Street 546.0 feet; thence N. 44° 44' E. 273.00 feet to a point of curvature; thence on the arc of a circular curve to the right with radius of 8790 feet through a central angle of 59° 16' to a point of tangency; thence S. 54° 00' E. 146.63 feet; thence N. 75° 15' E. 1053.5 feet; thence N. 14° 37' W. 132.36 feet; thence N. 13° 17' W. 66.05 feet; thence North 585.30 feet to a point on the north line of Pittsfield Township; thence on the north line of said township N. 89° 20' W. 87.17 feet to the place of beginning.



TAX CERTIFICATE.

Office of County Treasurer,
Washtenaw County, Michigan.

I hereby certify that there are no tax liens or titles held by the State on the lands described above, and that there are no tax liens or titles held by individuals on said lands for the five years preceding the day of May 1922 and that the taxes for said period of five years are fully paid, as shown by the records of this office.

Mary E. Blum
County Treasurer

CERTIFICATE OF APPROVAL BY THE BOARD OF COUNTY AUDITORS

Approved by the Board of County Auditors of Washtenaw County, Michigan, this 11th day of May 1922.

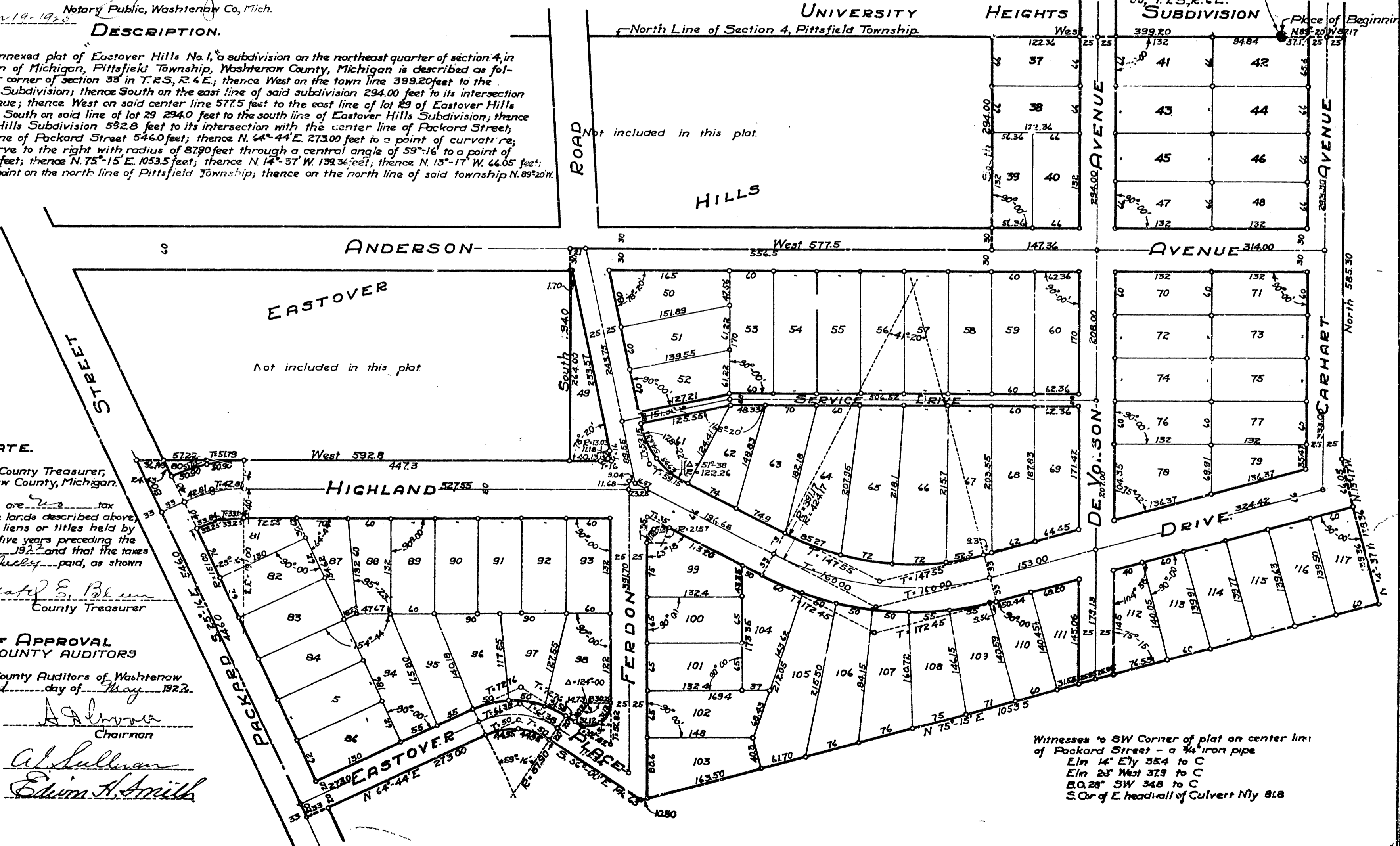
REGISTER OF DEEDS
Washtenaw County

RECEIVED for Record the 19th day of May A. D. 1922

1115 o'clock and recorded

Vol. 4 of Platbook Page 40

P. L. Townsend
Register of Deeds



Witnesses to SW Corner of plat on center line of Packard Street - a 1/2" iron pipe
E in 14° Ely 354 to C
E in 23° West 373 to C
E. O. 28° SW 348 to C
S. Or of E. head of Culvert Nty 81.8

RECORDED
INDEXED
MAY 17 1922
1 OF 1