

I hereby certify that the plat hereon delineated is a correct one and that permanent metal monuments of not less than one inch in diameter and fifteen inches in length set in a concrete base at least four inches in diameter and forty-eight inches in depth have been placed at the points marked thus: (C) as shown on the plat, at all the intersections of streets, intersections of alleys or of streets and alleys and at the intersections of streets and alleys with the boundaries of the plat as shown on said plat.

*W.H. Steele*  
Registered Civil Engineer

CERTIFICATE OF MUNICIPAL APPROVAL

This plat was approved by the Common Council of the City of Ann Arbor, Washenaw County, Michigan at a meeting held.....  
*James J. Studd*  
Clerk

*James J. Studd*  
Clerk

This plat was approved by the Board of Public Works, of the City of Ann Arbor, Washenaw County, Michigan at a meeting held.....  
*James J. Studd*  
Clerk

Clerk

CERTIFICATE OF APPROVAL BY BOARD OF COUNTY AUDITORS

Approved by the Board of County Auditors of Washenaw County, Michigan this..... day of.....  
*John D. Schuchman*  
Chairman  
*William M. Stricker*

*William M. Stricker*



Workman

Attorneys Ralph W. Cline

Aug 28 1928

*John D. Schuchman*

*Aug 18-1928*  
*Geo. K. Hancock*

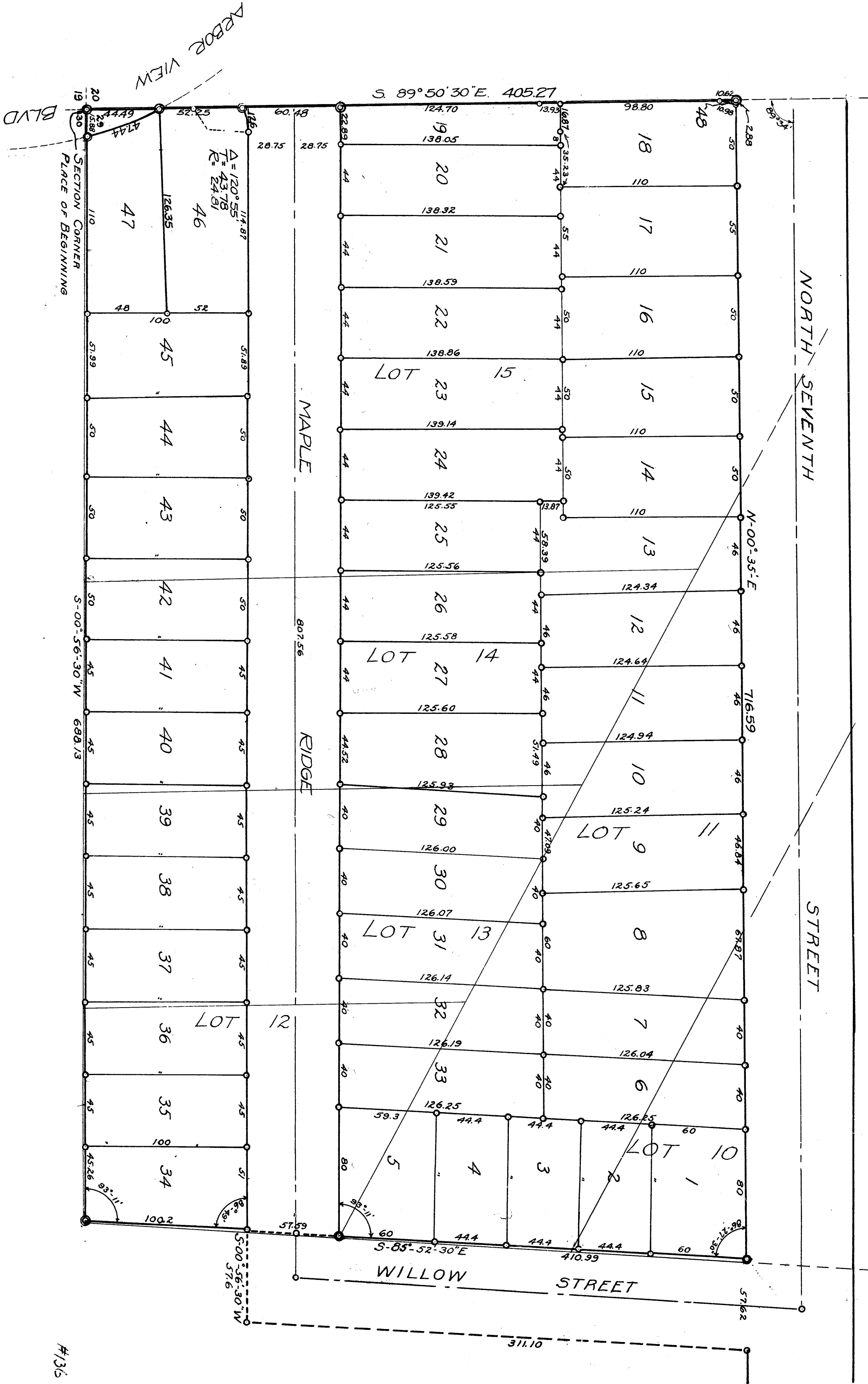
*Aug 22-1928*  
*Ed. R. Murray*

# ASSESSORS PLAT NO. 10.

OF PART OF LOTS 10, 11, AND 15, AND ALL OF LOTS 12, 13, AND 14, OF THE MAP OF A PART OF THE N.W. 1/4 OF SEC. 29, T. 2 S., R. 6 E., IN THE CITY OF ANN ARBOR, WASHTENAW COUNTY, MICH.

Commencing at the section corner which is common to sections 19, 20, 29 and 30, Ann Arbor Township, Washenaw County, Michigan thence S. 00° - 56' - 30" W. along the west line of section 29, 688.13 feet to an iron pipe monument; thence E. 85° - 52' - 30" W. 410.99 feet to an iron pipe monument in the westerly line of Seventh Street; thence N. 00° - 35' E. along said westerly line 716.59 feet to an iron pipe at the intersection of the westerly line of Seventh Street with the north line of Section 29; thence N. 89° - 50' - 30" W. along the north line of section 29, 405.27 feet to the place of beginning, being parts of Lots 10, 11, and 15, and all of Lots 12, 13, and 14 of the MAP OF A PART OF THE NORTHWEST QUARTER OF SECTION 29, T. 2 S., R. 6 E., Washenaw County, Michigan.

Scale 1"=50'



KNOW ALL MEN BY THESE PRESENTS: That I, Herbert W. Crippen, Assessor of the City of Ann Arbor, Washenaw County, Michigan by virtue of authority in me vested by Section 3350, Compiled Laws of 1896 amended, having been duly authorized by the Common Council of the City of Ann Arbor, Washenaw County, Michigan, have caused the land described in the annexed plat to be surveyed, laid out, and platted to be known as 'ASSESSOR'S PLAT NO. 10' of the City of Ann Arbor, Washenaw County, Michigan, a part of Lots 10, 11 and 15, and all of Lots 12, 13, and 14 of the MAP OF A PART OF THE NORTHWEST QUARTER OF SECTION 29, T. 2 S., R. 6 E., Washenaw County, Michigan, and that the streets and alleys as shown on said plat are hereby dedicated to the use of the Public.

WITNESSES:  
*Herbert W. Crippen*  
Assessor of the City of Ann Arbor,  
Washenaw County, Michigan.  
*James J. Studd*  
Clerk

ACKNOWLEDGMENT  
STATE OF MICHIGAN  
COUNTY OF WASHENAW  
County of Washenaw  
On this... day of... A.D. 1928, before me, a Notary Public, in and for said county personally came the above named Herbert W. Crippen, Assessor of the City of Ann Arbor, Washenaw County, Michigan, known to me to be the person who executed the above dedication, and acknowledged the same to be his free act and deed as such Assessor.

My Commission expires...  
Notary Public in and for Washenaw County, Mich.