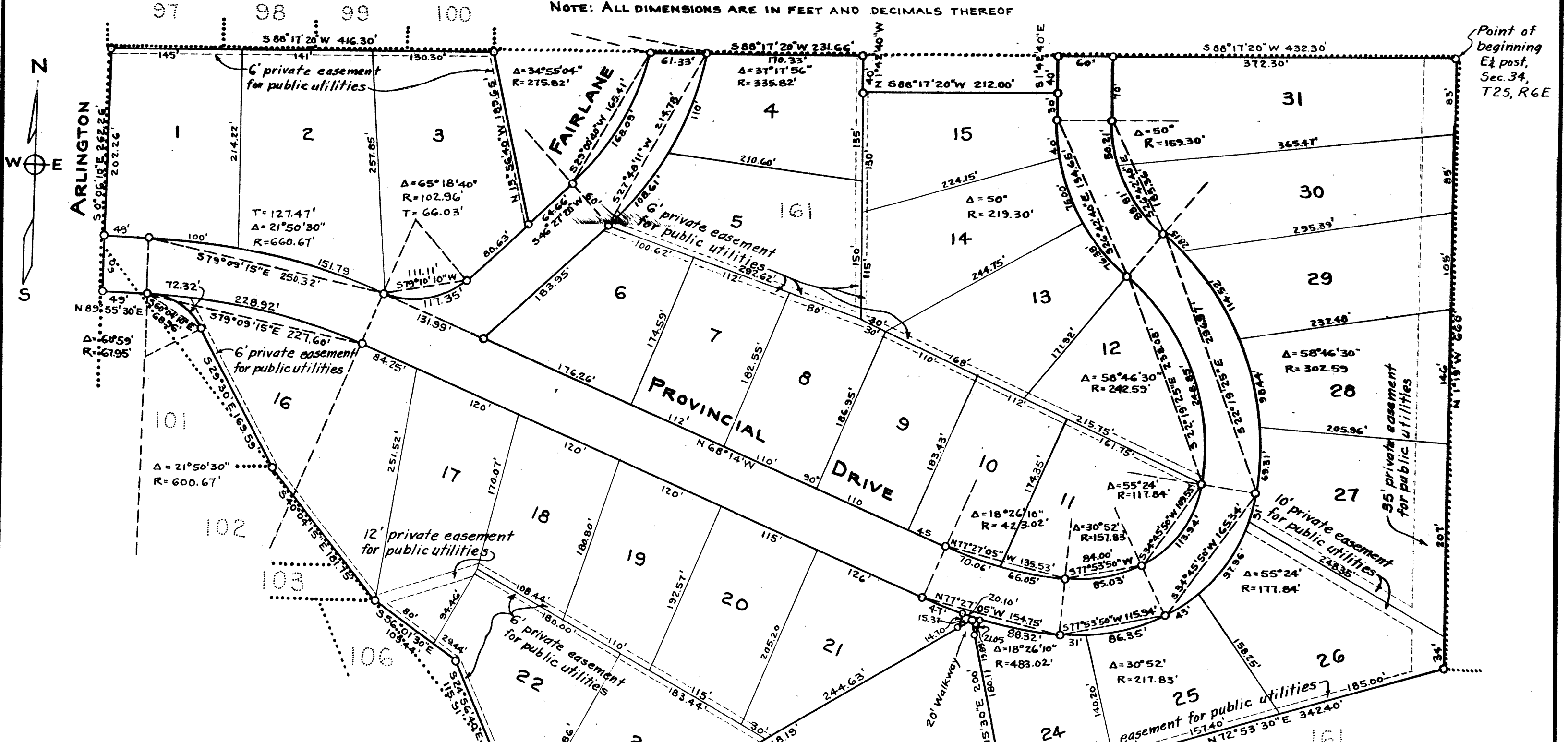


HUNTING VALLEY SUBDIVISION NO. 1

PART OF THE SOUTHEAST QUARTER OF SECTION 34, TOWN 2 SOUTH, RANGE 6 EAST,
CITY OF ANN ARBOR, WASHTENAW COUNTY, MICHIGAN

SCALE: 1"=100'

NOTE: ALL DIMENSIONS ARE IN FEET AND DECIMALS THEREOF



APPROVAL BY COUNTY PLAT BOARD

This plat was approved on the 19th day of February, 1960, by the Washtenaw County Plat Board.

Patricia Newkirk Hardy
Patricia Newkirk Hardy
(County Register of Deeds)

J. Martin Rempp
J. Martin Rempp (Auditor)

Herbert G. Loeffler
Herbert G. Loeffler (Auditor)

John P. Cook
John P. Cook (Auditor)

John H. Flook
John H. Flook (Drain Commissioner)

COUNTY TREASURER'S CERTIFICATE

Office of County Treasurer
Washtenaw County, Michigan

I hereby certify that there are no tax liens or titles held by the State on the lands described hereon and that there are no tax liens or titles held by individuals on said lands for five years preceding the 14th day of January, 1960, and that the taxes for said period of five years are paid, as shown by the records of this office. This Certificate does not apply to taxes, if any, now in process of collection by Township or City collecting officers.

W. F. Verner
W. F. Verner (County Treasurer)

CERTIFICATE OF APPROVAL BY THE CITY PLANNING COMMISSION

This plat was approved by the Planning Commission of the City of Ann Arbor, Michigan, at a meeting held on the 26 day of January, 1960.

Dean W. Coston
Dean W. Coston (Chairman)

John D. Paul
John D. Paul (Secretary)

MUNICIPAL APPROVAL

This plat was approved by the Council of the City of Ann Arbor at a meeting held on February 8, 1960

Fred J. Looker
Fred J. Looker (Clerk)

SURVEYOR'S CERTIFICATE

I hereby certify that the plat hereon delineated is a correct one and that permanent metal monument consisting of bars not less than one-half inch in diameter and 36 inches in length, encased in a concrete cylinder at least four inches in diameter and 36 inches in depth, have been placed at points marked thus (o) as thereon shown at all angles in the boundaries of the land platted, at all the intersections of streets and alleys with the boundaries of the plat as shown on said plat. All dimensions are given in feet and decimals thereof.

Samuel D. Porter
Samuel D. Porter, Registered
Land Surveyor No. 1469

DESCRIPTION OF LAND PLATTED

The land embraced in the annexed plat of Hunting Valley Subdivision No. 1, part of the southeast quarter of Section 34, T. 2 S., R. 6 E., City of Ann Arbor, Washtenaw County, Michigan, being part of Lots 101 and 161 of the plat of Ann Arbor Hills, and further described as follows.

Beginning at the east quarter post of Section 34, T. 2 S., R. 6 E., City of Ann Arbor, Washtenaw County, Michigan; thence S 88° 17' 20" W 432.30 feet; thence S 1° 42' 40" E 40.00 feet; thence S 88° 17' 20" W 212.00 feet; thence N 1° 42' 40" W 40.00 feet; thence S 88° 17' 20" W 231.66 feet; thence 168.09 feet in the arc of a circular curve to the right with a central angle of 34° 55' 04" and a radius of 275.82 feet to a point to which the long chord bears S 29° 00' 40" W 165.41 feet; thence S 46° 27' 20" W 64.66 feet; thence N 13° 56' 40" W 189.65 feet; thence S 88° 17' 20" W 416.30 feet; thence S 0° 06' 10" E 262.26 feet; thence N 89° 55' 30" E 49.00 feet; thence 72.32 feet in the arc of a circular curve to the right with a central angle of 60° 59' and a radius of 67.95 feet to a point to which the long chord bears S 60° 04' 10" E 68.96 feet; thence S 29° 30' E 169.59 feet; thence S 40° 04' 15" E 181.75 feet; thence S 56° 01' 30" E 109.44 feet; thence S 24° 56' 40" E 115.91 feet; thence S 24° 39' W 20.98 feet; thence 117.46 feet in the arc of a circular curve to the right with a central angle of 41° 19' 10" and a radius of 163.75 feet to a point to which the long chord bears S 44° 43' 30" E 115.55 feet; thence N 58° 23' 30" E 518.19 feet; thence S 13° 15' 30" E 200.00 feet; thence N 67° 59' 30" E 154.18 feet; thence N 72° 53' 30" E 342.40 feet; thence N 1° 19' W 660.00 feet to the place of beginning. This plat contains 31 lots.

February 23, 1960
February 24, 1960
February 23, 1960

D. L. MacElroy
D. L. MacElroy - Plat Engineer

KNOW ALL MEN BY THESE PRESENTS, that we, Carroll A. Benz and Grace Vincent Benz, his wife; Joseph E. Rowe and Anne P. Rowe, his wife; the Hannah Development Company, a Michigan Corporation, by Eugene H. Hannah, President, and Finley S. Williamson, Secretary, as proprietors, have caused the land embraced in the annexed plat to be surveyed, laid out, and platted, to be known as Hunting Valley Subdivision No. 1, Part of the Southeast Quarter of Section 34, T. 2 S., R. 6 E., Ann Arbor, Washtenaw County, Michigan, and that the streets and walks as shown on said plat are hereby dedicated to the use of the public.

Signed and Sealed in the Presence of:
William S. Herbert
William S. Herbert (Witness)
Ruth M. Hollister
Ruth M. Hollister (Witness)

Carroll A. Benz
Carroll A. Benz
Grace Vincent Benz
Grace Vincent Benz
Joseph E. Rowe
Joseph E. Rowe
Anne P. Rowe
Anne P. Rowe
HANNAH DEVELOPMENT COMPANY
Eugene H. Hannah
Eugene H. Hannah, President
Finley S. Williamson
Finley S. Williamson, Secretary

ACKNOWLEDGMENT

STATE OF MICHIGAN, } ss.
County of Washtenaw }

On this 13th day of January, 1960, before me, a Notary Public in and for said county, personally came the above named Carroll A. Benz and Grace Vincent Benz, his wife; Joseph E. Rowe and Anne P. Rowe, his wife, known to me to be the persons who executed the above dedication, and acknowledged the same to be their free act and deed.

Ruth M. Hollister
Ruth M. Hollister, Notary Public
Washtenaw County, Michigan

STATE OF MICHIGAN, } ss.
County of Washtenaw }

On this 13th day of January, A. D. 1960, before me, Ruth M. Hollister, a Notary Public in and for said county, appeared Eugene H. Hannah and Finley S. Williamson to me personally known, who being each by me duly sworn did say that they are the President and Secretary respectively of the Hannah Development Company, a Michigan corporation, and that the seal affixed to said instrument is the corporate seal of said corporation and that said instrument was signed and sealed in behalf of said corporation by authority of its Board of Directors and the said Eugene H. Hannah and Finley S. Williamson acknowledged said instrument to be the free act and deed of said corporation.

Ruth M. Hollister
Ruth M. Hollister, Notary Public
Washtenaw County, Michigan

My Commission expires January 1, 1963

COPY
Register's Office
Washtenaw County
Plat of Hunting Valley
Subdivision No. 1
was Recorded this 23rd day of
February, 1960, at 3:24
P. M. in the 15th of plates
Page 15
Patricia Newkirk Hardy
Register of Deeds