

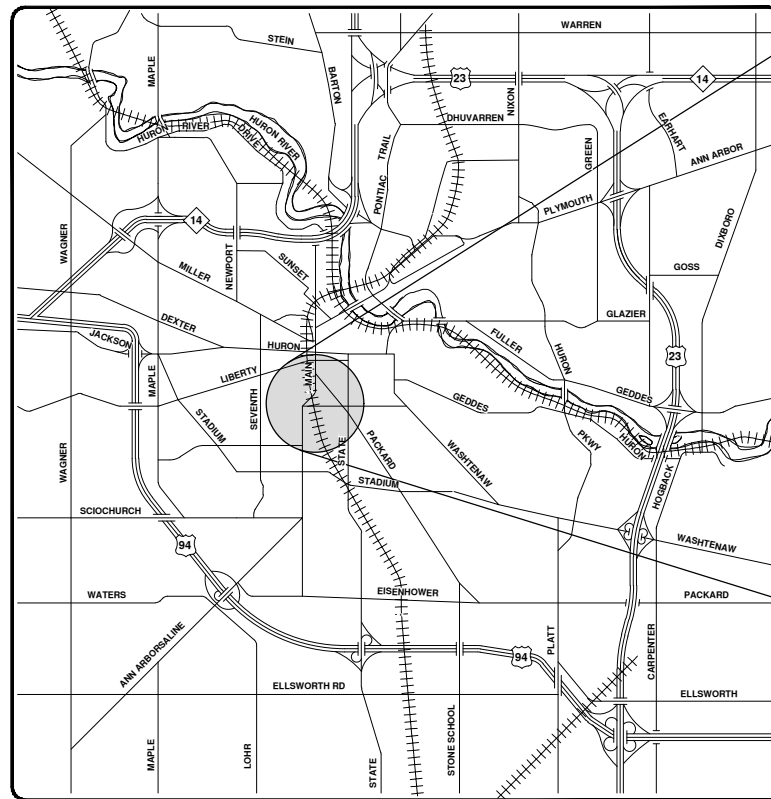


CITY OF ANN ARBOR ENGINEERING

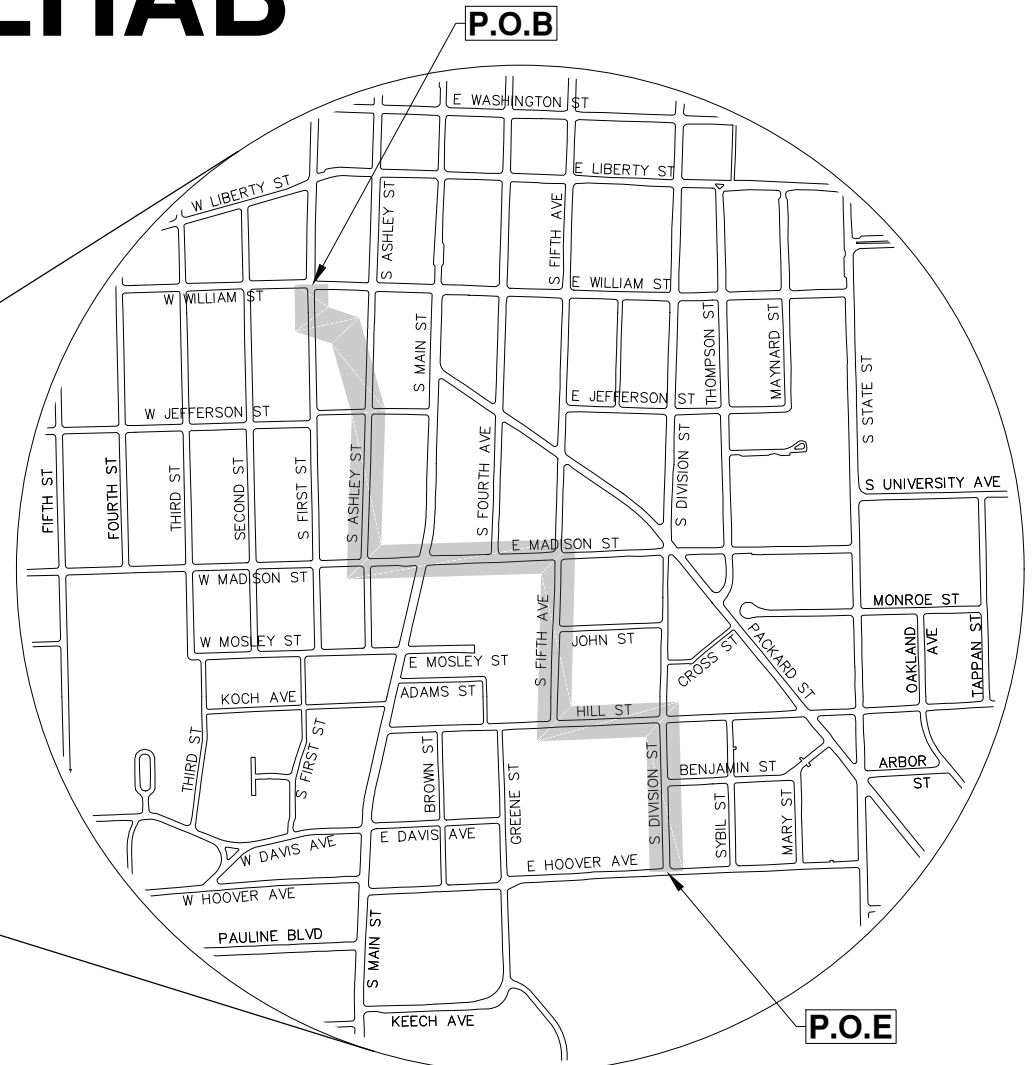
HIGH LEVEL TRUNKLINE SANITARY SEWER REHAB

ITB No. 4600, FILE No. 2018027

SHEET LIST TABLE	
SHEET NUMBER	SHEET TITLE
1	COVER SHEET
2	LOCATION MAP
3 - 4	RR TRACKS (ASHLEY TO FIRST/WILLIAM)
5 - 6	ASHLEY ST (MADISON TO RR TRACKS)
7 - 9	MADISON ST (S FIFTH TO ASHLEY)
10 - 11	FIFTH AVE (HILL TO MADISON)
12 - 13	HILL ST (S DIVISION TO S FIFTH)
14 - 15	S DIVISION (HOOVER TO HILL)



VICINITY MAP



NOTES:

FOR PROTECTION OF UNDERGROUND UTILITIES AND IN CONFORMANCE WITH PUBLIC ACT 174 OF 2013, THE CONTRACTOR SHALL CALL 811 OR 1-800-482-7171 A MINIMUM OF THREE FULL WORKING DAYS, EXCLUDING SATURDAYS, SUNDAYS, AND HOLIDAYS, PRIOR TO BEGINNING EACH EXCAVATION IN AREAS WHERE PUBLIC UTILITIES HAVE NOT BEEN PREVIOUSLY LOCATED. MEMBERS WILL THUS BE ROUTINELY NOTIFIED. THIS DOES NOT RELIEVE THE CONTRACTOR OF THE RESPONSIBILITY OF NOTIFYING UTILITY OWNERS WHO MAY NOT BE A PART OF THE "MISS DIG" ALERT SYSTEM.

THE UNDERGROUND LOCATIONS SHOWN FOR NATURAL GAS, TELEPHONE, ELECTRICAL POWER, CABLE TV AND FIBER OPTIC LINES ARE APPROXIMATE. THE CITY OF ANN ARBOR ASSUMES NO RESPONSIBILITY FOR THEIR ACCURATE REPRESENTATION IN THIS DRAWING. MISS DIG MUST BE CONTACTED PRIOR TO CONSTRUCTION TO LOCATE THESE UTILITIES.

THE CONSTRUCTION COVERED BY THESE PLANS SHALL CONFORM TO THE 1994 EDITION OF THE CITY OF ANN ARBOR PUBLIC SERVICES DEPARTMENT STANDARD SPECIFICATIONS, ITS DETAILS, WHICH ARE INCLUDED BY REFERENCE, AND THIS PROJECT'S CONTRACT DOCUMENTS. THE OMISSION OF ANY CURRENT STANDARD DETAIL DOES NOT RELIEVE THE CONTRACTOR OF THIS REQUIREMENT.



REV.	DATE	DESCRIPTION
00	5-31-19	OUT FOR BID
		DD
		DK
		DF
		DR
		IVK
		CHECKED

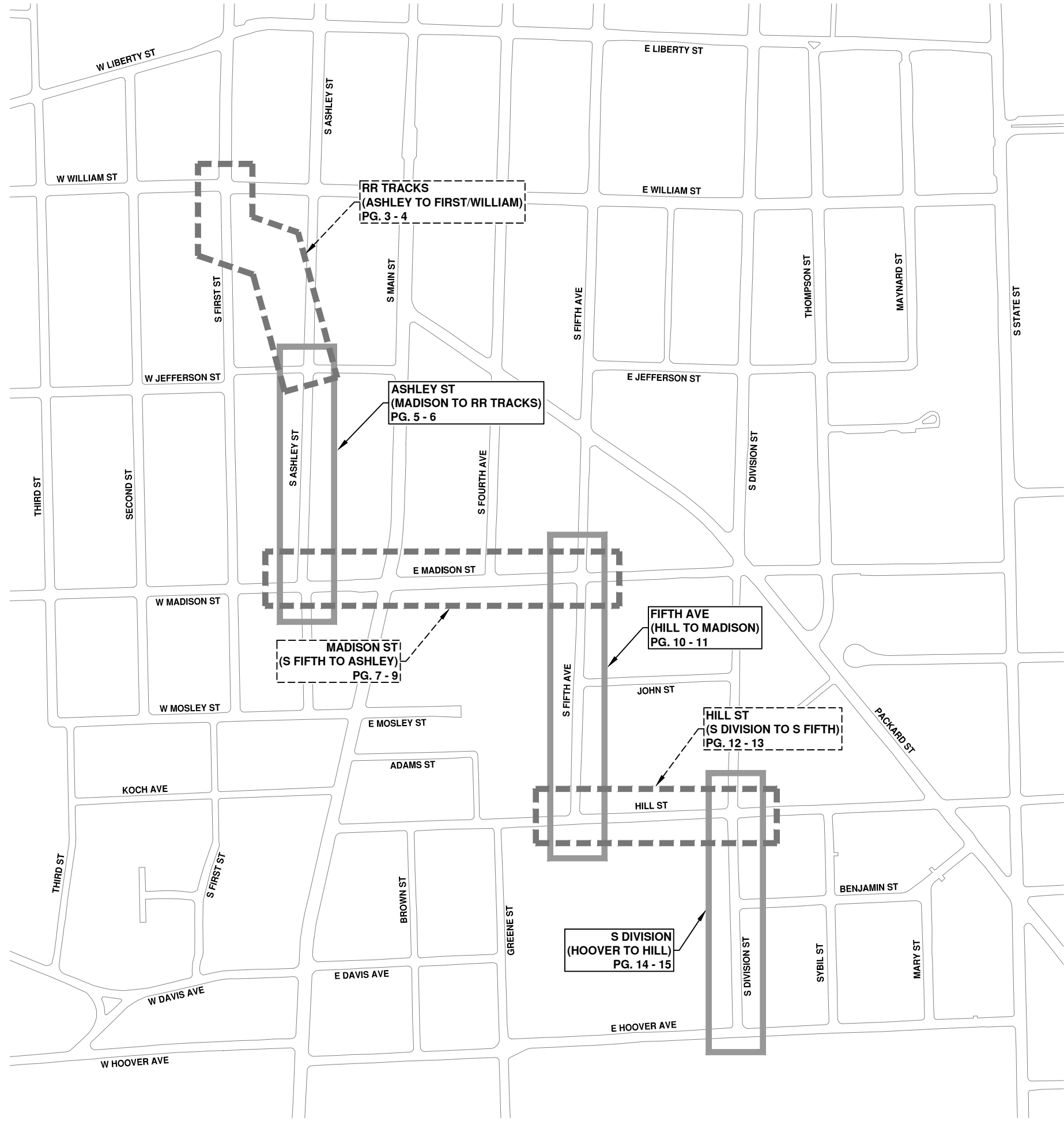
CITY OF ANN ARBOR
PUBLIC SERVICES
301 EAST HURON STREET
ANN ARBOR, MI 48106-8647
ANN ARBOR 734-794-4410
www.a2gov.org



CITY OF ANN ARBOR - PUBLIC SERVICES - ENGINEERING
PROJECT DESCRIPTION AND LIMITS
SCALE
DRAWING No. 2018027-1
SHEET No. 1 OF 15

PREPARED UNDER THE SUPERVISION OF
Igor V. Kotlyar
IGOR V. KOTLYAR, P.E. - MI LICENSE No. 43287
PROJECT ENGINEER
DATE 5/31/2019





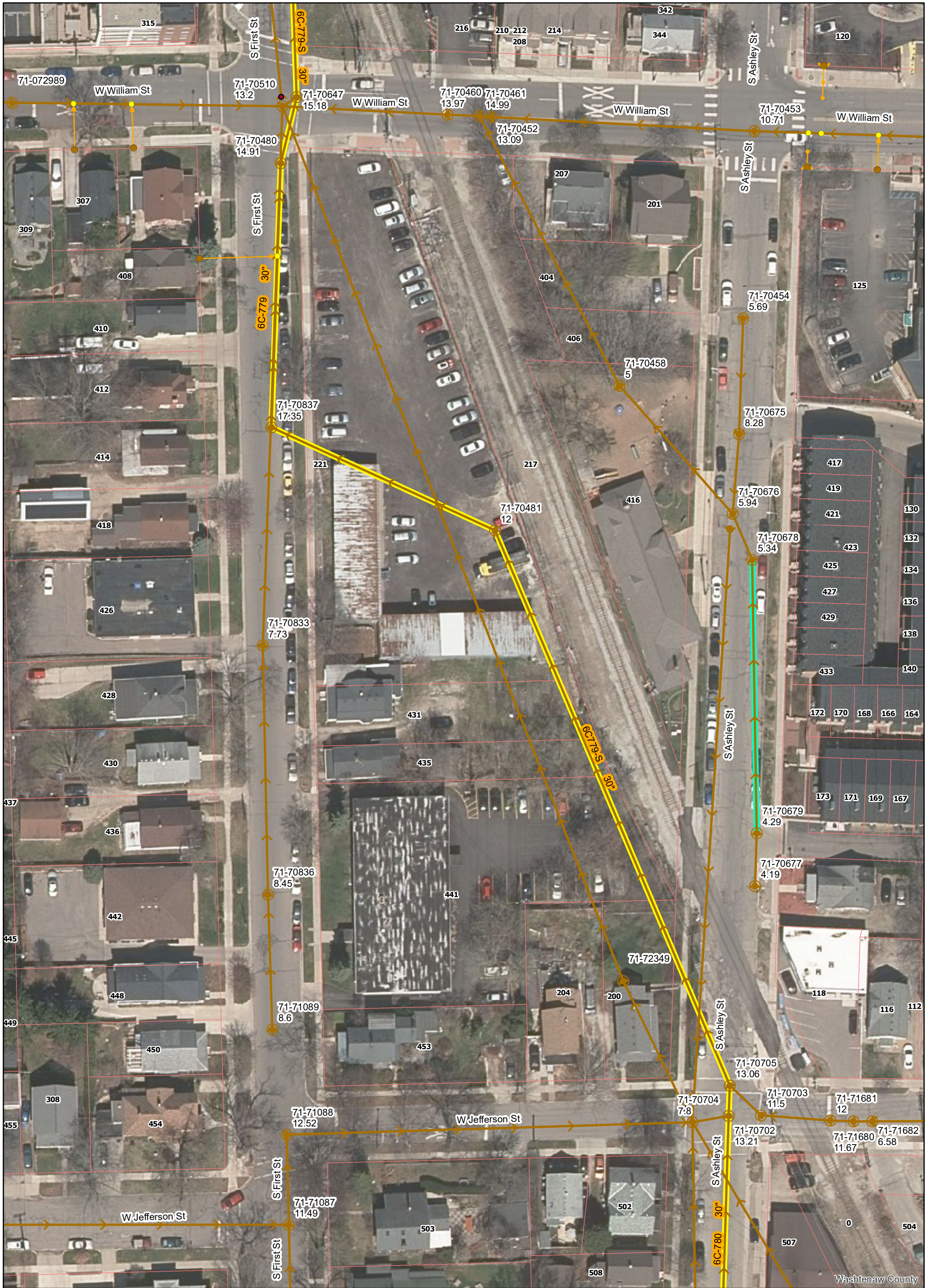
REV.	DATE	DESCRIPTION
00	5-31-19	OUT FOR BID
		DRAWN
		DPF
		CHK

CITY OF ANN ARBOR
 PUBLIC SERVICES
 301 EAST HURON STREET
 ANN ARBOR, MI 48106-8667
 734-794-4410
 www.a2gov.org



CITY OF ANN ARBOR - PUBLIC SERVICES - ENGINEERING
HIGH LEVEL TRUNKLINE SANITARY SEWER REHAB
 LOCATION MAP

SCALE: 1" = 200'
 DRAWING No.
2018027-2



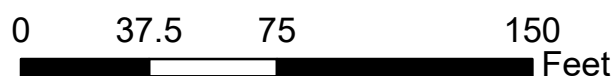
Legend

- Proposed Lining
- Lined Pipe
- Sanitary Main
- Manhole
- Sanitary Lateral, Abandoned
- Sanitary Lateral
- ⊗ Sanitary Lateral, Plugged

Example: 71-70682 (Manhole ID)

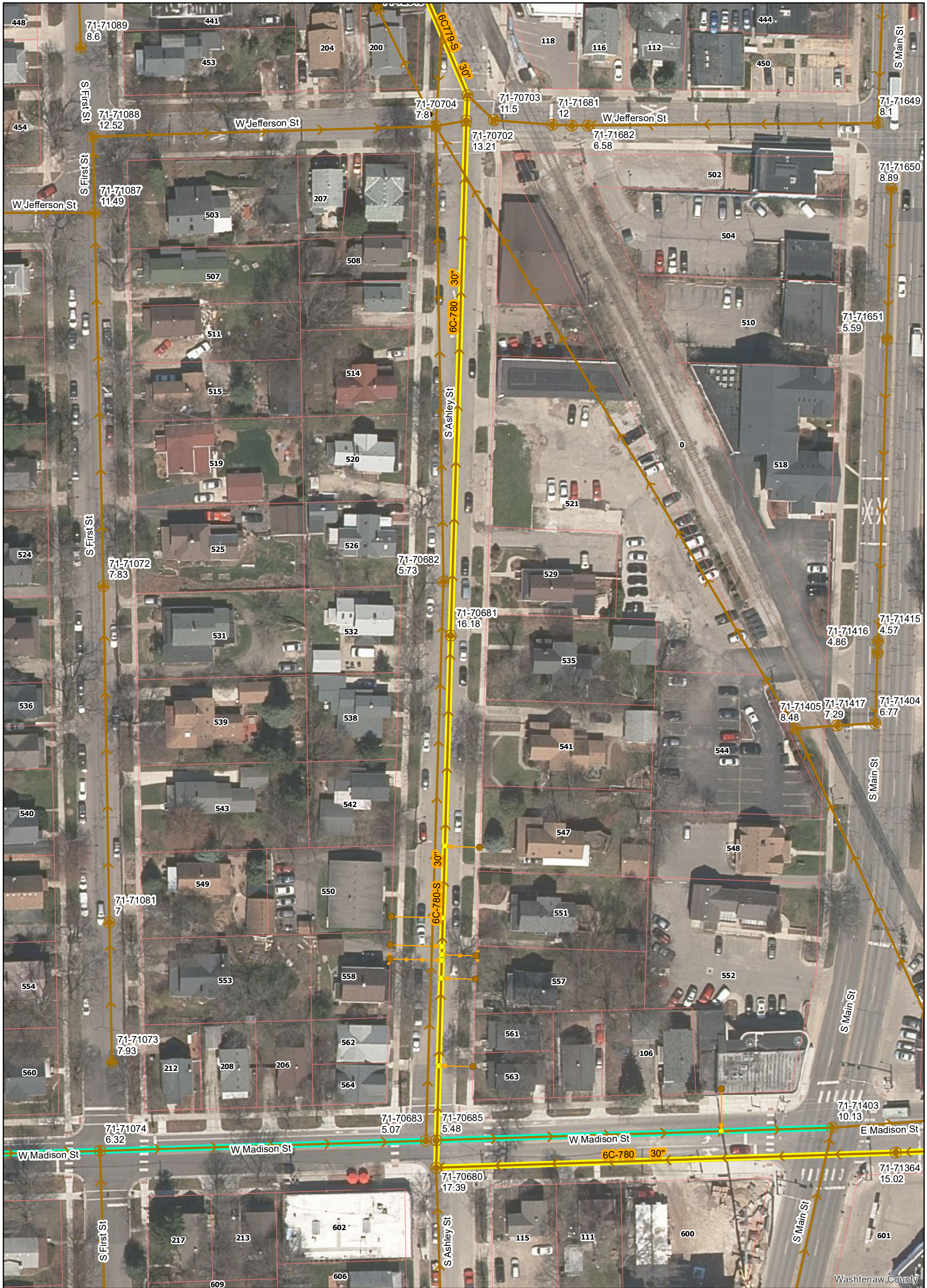
Example: 5.07 (Manhole Depth)

RR Tracks (Ashley to First/William)



For terms and conditions of use see www.a2gov.org/terms

Washtenaw County



- Legend**
- Proposed Lining
 - Lined Pipe
 - Sanitary Main
 - Sanitary Lateral, Abandoned
 - Sanitary Lateral
 - Sanitary Lateral, Plugged
 - Manhole

Ashley St (Madison to RR Tracks)

Example: 71-70682 (Manhole ID)

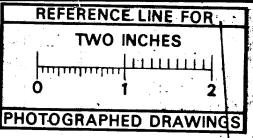
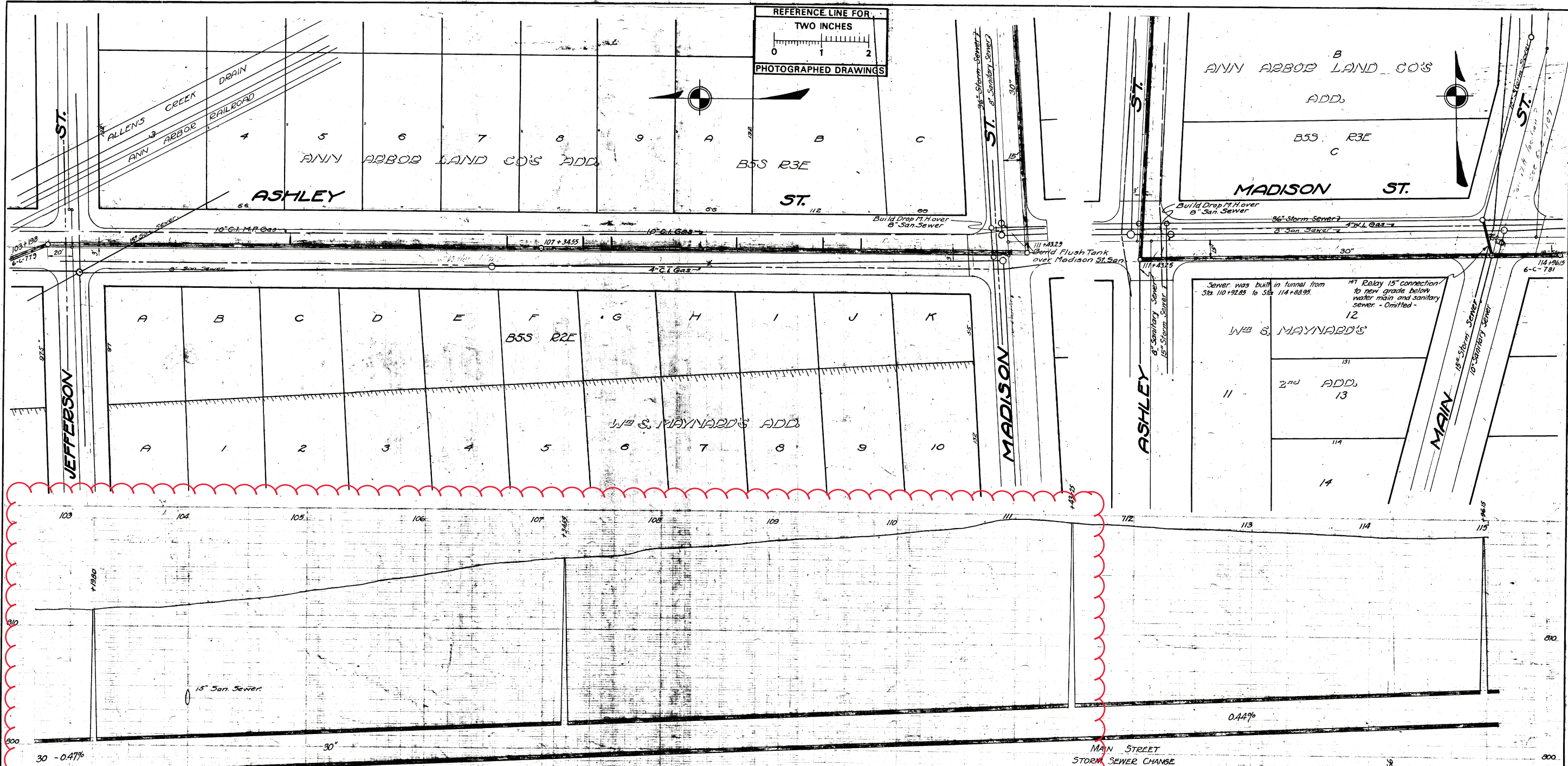
Example: 5.07 (Manhole Depth)



For terms and conditions of use see www.a2gov.org/terms



Washtenaw County



MEASUREMENTS TO HOUSE CONNECTIONS

Sta. Y.	House No
Not in Ashley St.	561
"	563
105 + 22.6	511
107 + 04.6	529
107 + 68.6	535
107 + 92.0	541
108 + 96.6	547
109 + 70.4	551
110 + 01.6	557
Sta. for	513 not found

Digital Status
Scanned On: 2-25-05
By: DGK
Despeckled: Yes
Vectors:
O.C.R.:

Section E. Alternate Route.

CITY ENGINEER'S OFFICE
ANN ARBOR, MICH.

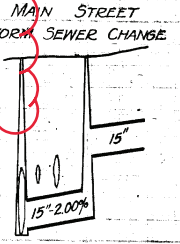
PLAN AND PROFILE
ALTERNATE ROUTE
OF
**MAIN TRUNK
SANITARY SEWER.**
Ashley-Jefferson to Madison to Madison-Ashley to Main

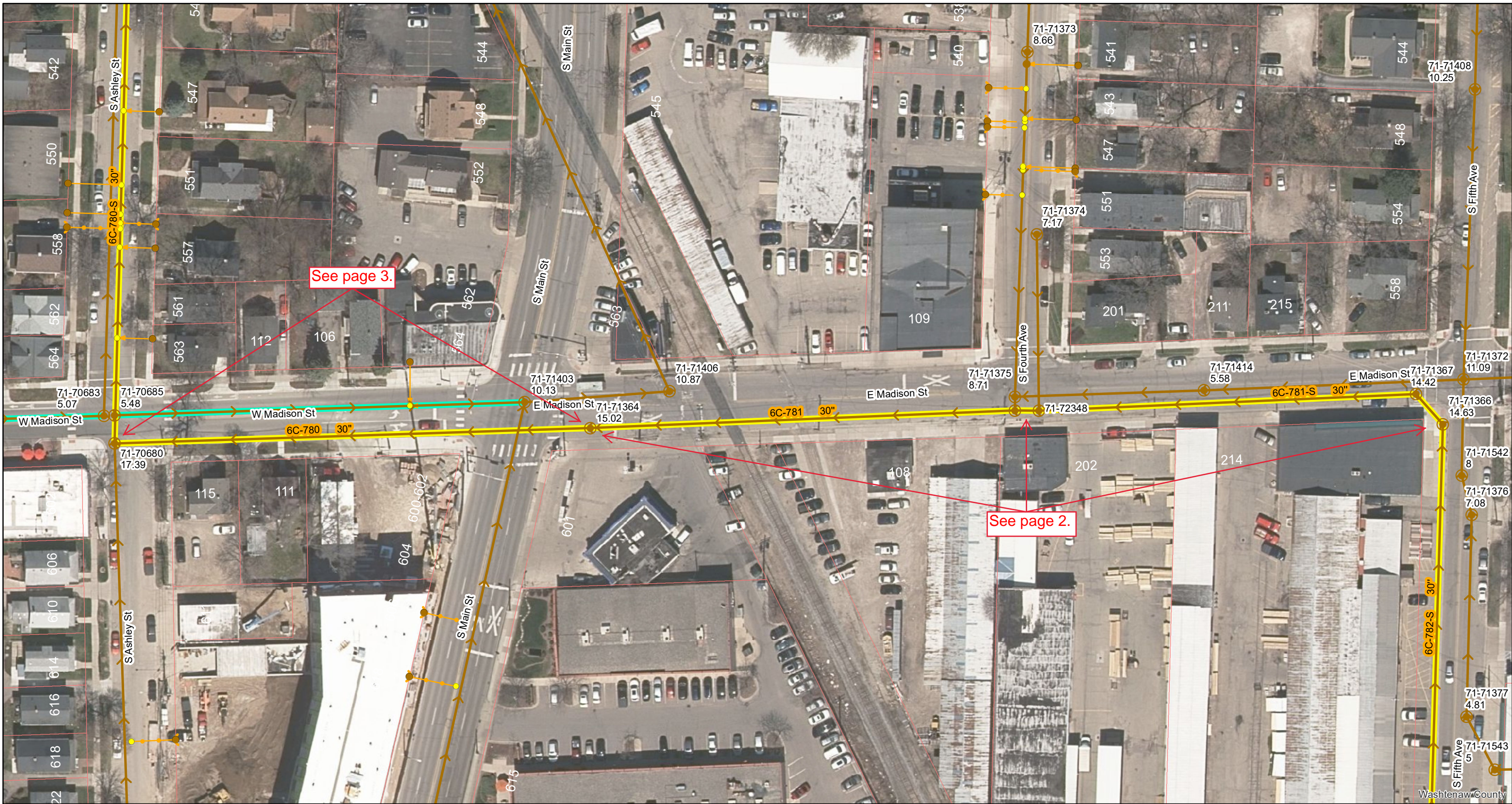
Geo. H. Sandenburgh City Engineer
1927-2-1

Scales: Plan Hor. 1"=40' Prof. Vert. 1"=4'

SHEET No. _____
INDEX No. 2016
SHELF No. 6
SIZE C
SUB No. 780

DRAWN BY _____
TRACED BY KVD
CHECKED BY _____



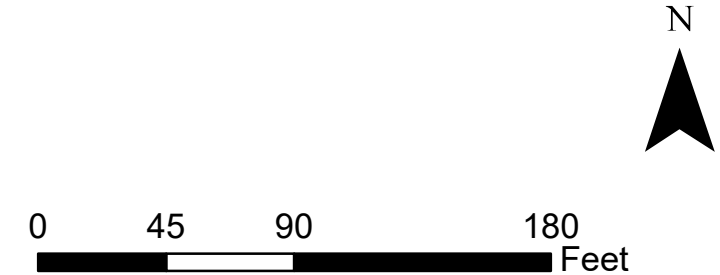


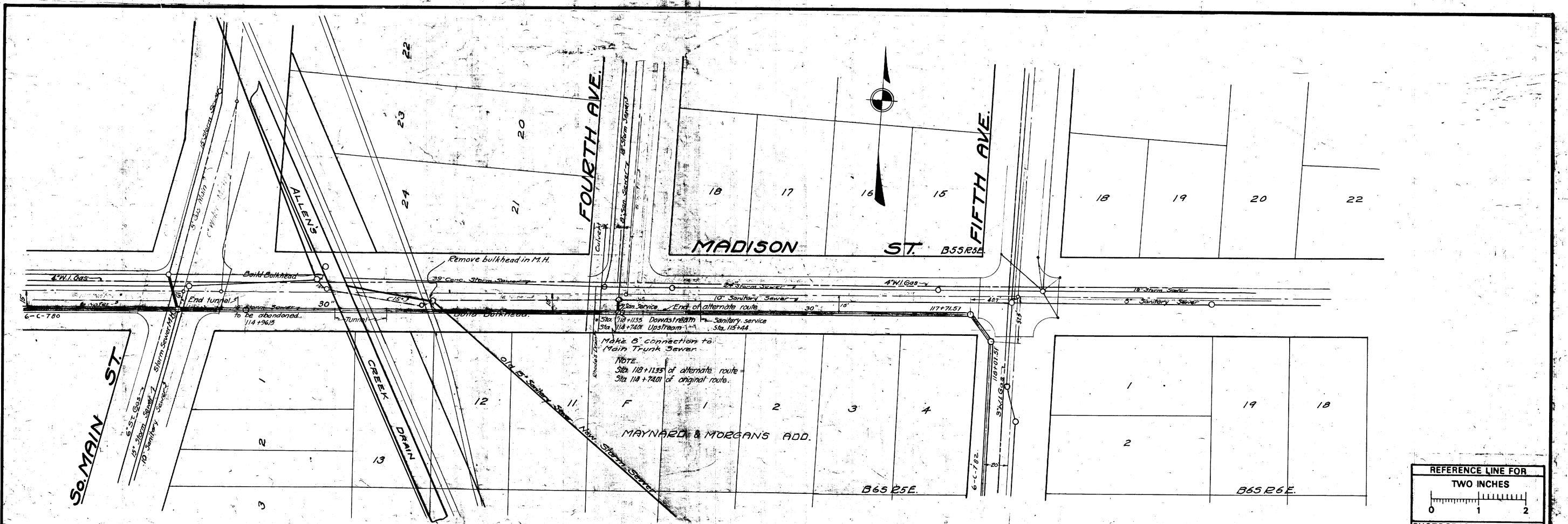
- Legend**
- Proposed Lining
 - Lined Pipe
 - Sanitary Main
 - Manhole
 - Sanitary Lateral, Abandoned
 - Sanitary Lateral
 - ⊗ Sanitary Lateral, Plugged

Example: 71-70682 (Manhole ID)
 Example: 5.07 (Manhole Depth)

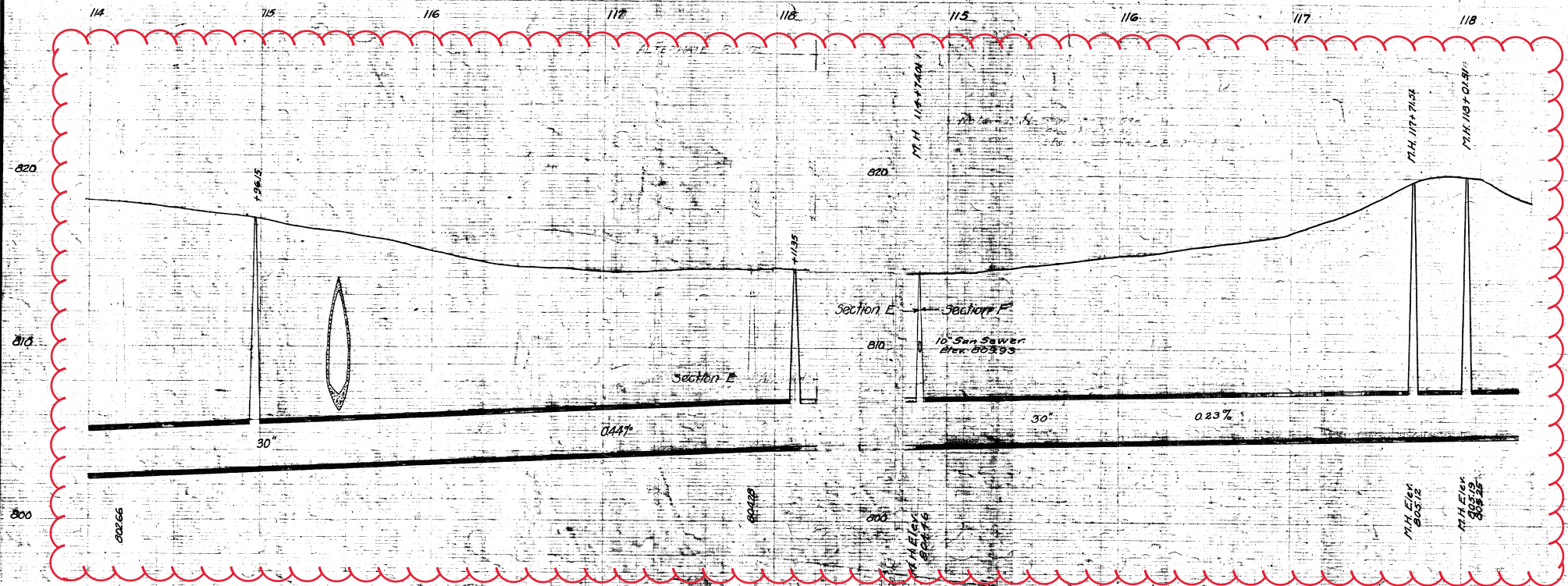
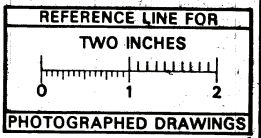
Madison St (S Fifth to Ashley)

For terms and conditions of use see www.a2gov.org/terms





NOTE:
Sta 118+11.95 of alternate route
Sta 118+14.01 of original route.



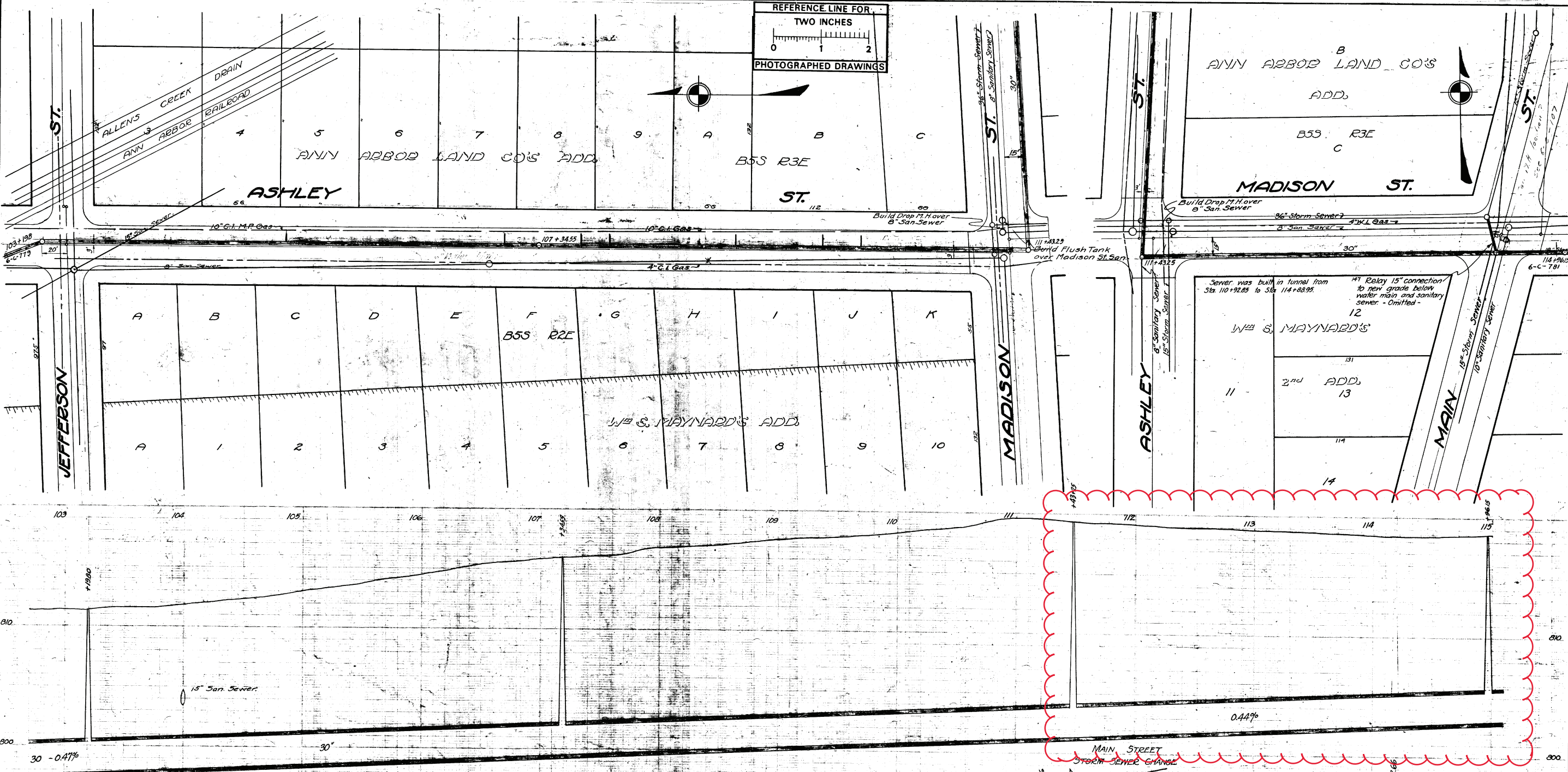
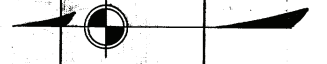
MADISON ST. CONNECTION



Digital Status
Scanned On: 2-25-05
By: DKG
Despeckled: Yes
Vector: Yes
O.C.R.: Yes

INDEX No. 2017	CITY ENGINEER'S OFFICE
SHELF 6	ANN ARBOR, MICH.
SIZE C	PLAN AND PROFILE
SUB No. 781	OF
	MAIN TRUNK
	SANITARY SEWER
	Madison - Main to Fifth Ave.
Drawn by:	Geo. H. Sandenburgh City Engineer
Traced by: KWD	1925-9-22
Checked by:	Scales: Plan, Hor. 1"=40' Prof. Vert. 1"=4'

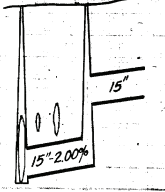
REFERENCE LINE FOR
TWO INCHES
PHOTOGRAPHED DRAWINGS



MEASUREMENTS TO HOUSE CONNECTIONS

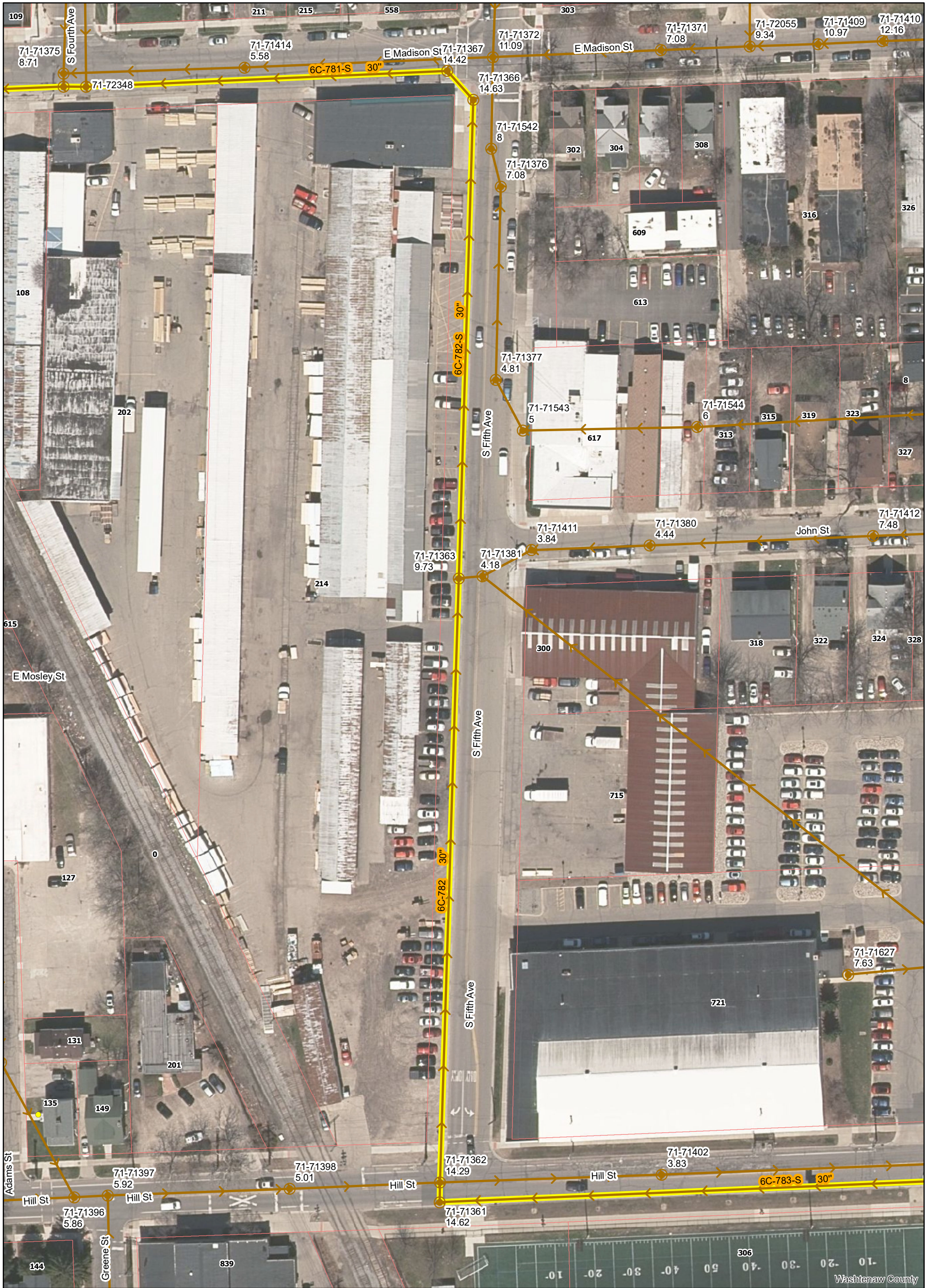
Sta. Y.	House No
Not in Ashley St.	561
"	563
105 + 22.6	511
107 + 04.6	529
107 + 68.6	535
107 + 92.0	541
108 + 96.6	547
109 + 70.4	551
110 + 01.6	557
Sta. for	513 not found

Digital Status
Scanned On: 2-25-05
By: DGK
Despeckled: Yes
Vectors:
O.C.R.:



SHEET No.
INDEX No. 2016
SHELF No. 6
SIZE C
SUB No. 780
DRAWN BY
TRACED BY KVD
CHECKED BY

CITY ENGINEER'S OFFICE
ANN ARBOR, MICH.
PLAN AND PROFILE
ALTERNATE ROUTE
OF
**MAIN TRUNK
SANITARY SEWER**
Ashley-Jefferson to Madison to Madison-Ashley to Main
Geo. H. Sandenburgh City Engineer
1927-2-1
Scales: Plan Hor. 1"=40' Prof. Vert. 1"=4'



- Legend**
- Proposed Lining
 - Lined Pipe
 - Sanitary Main
 - Manhole
 - Sanitary Lateral, Abandoned
 - Sanitary Lateral
 - ⊗ Sanitary Lateral, Plugged

Example: 71-70682 (Manhole ID)

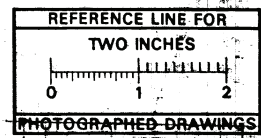
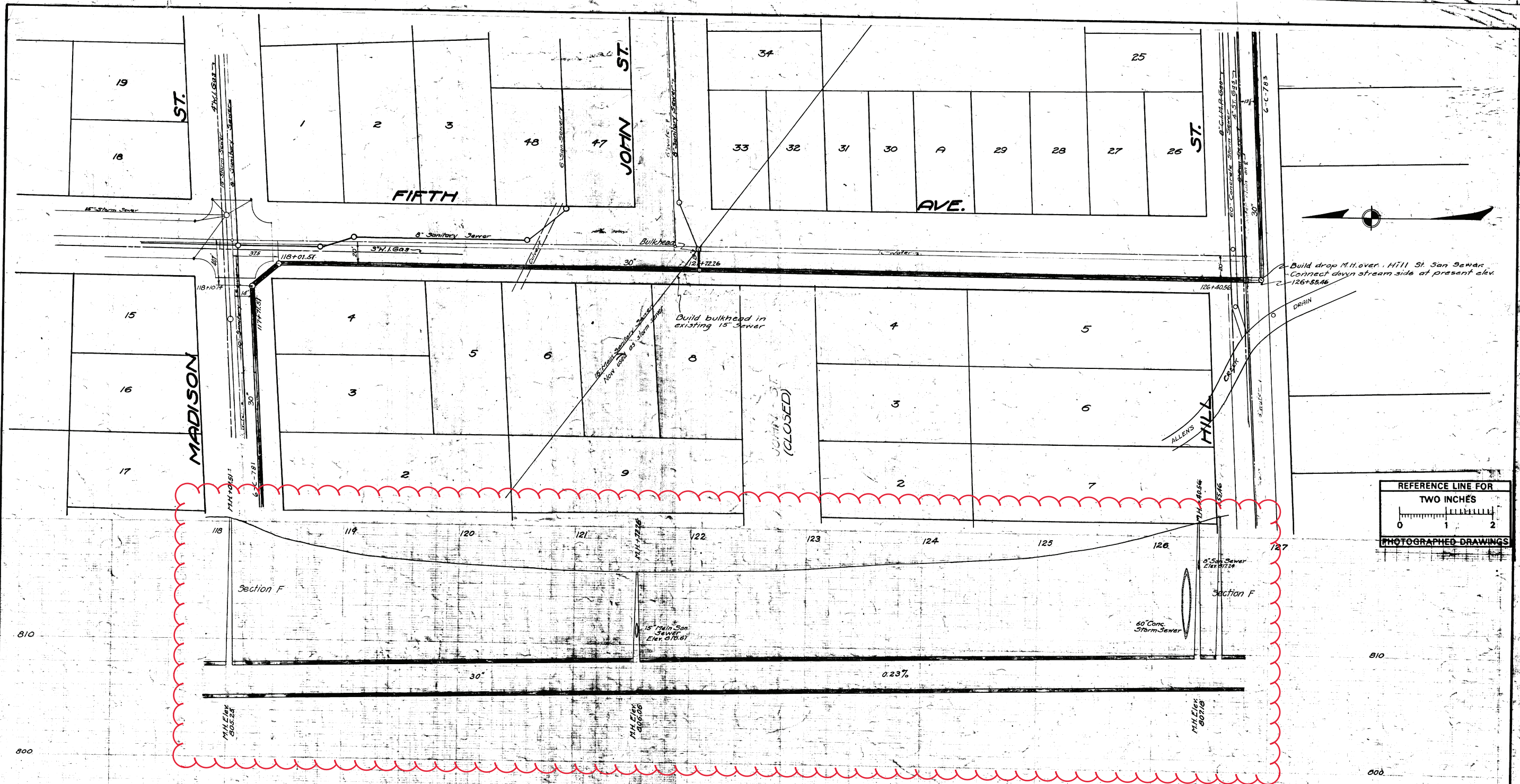
Example: 5.07 (Manhole Depth)

Fifth Ave (Hill to Madison)



For terms and conditions of use see www.a2gov.org/terms

Washtenaw County

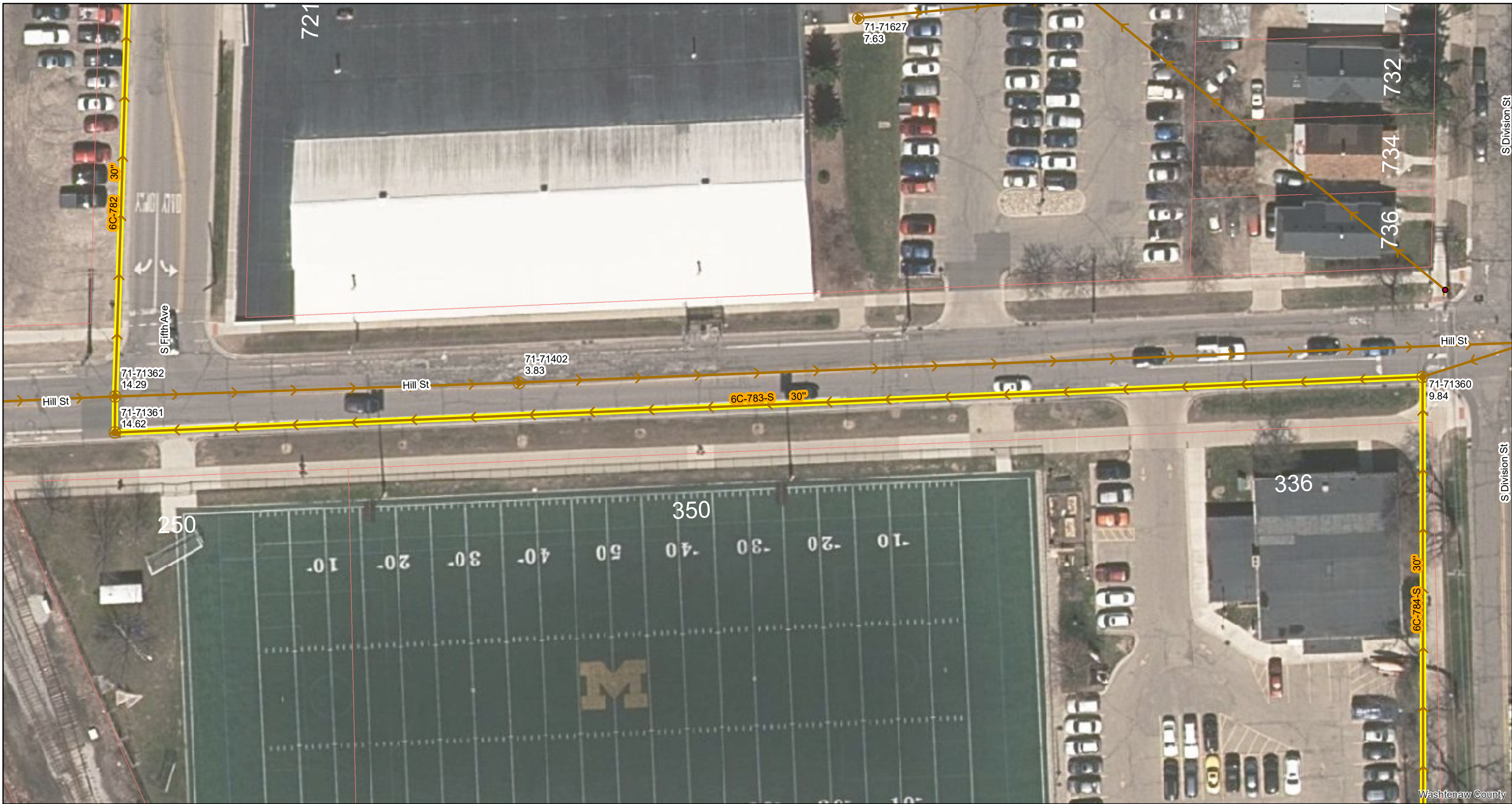


Digital Status
Scanned On: 2-25-05
By: DGE
Despeckled: Yes
Vectors:
O.C.R.:

CITY ENGINEER'S OFFICE
ANN ARBOR, MICH.
PLAN AND PROFILE
OF
**MAIN TRUNK
SANITARY SEWER**
Fifth Ave - Madison to Hill
Geo. H. Sandenburgh City Engineer
1926 - 9 - 23
Scales: Plan Hor. 1" = 40' Prof. Vert. 1" = 2'

INDEX No. 2013
SHELF 6
SIZE C
SUB No. 182

Drawn by
Traced by R.D.
Checked by



Legend

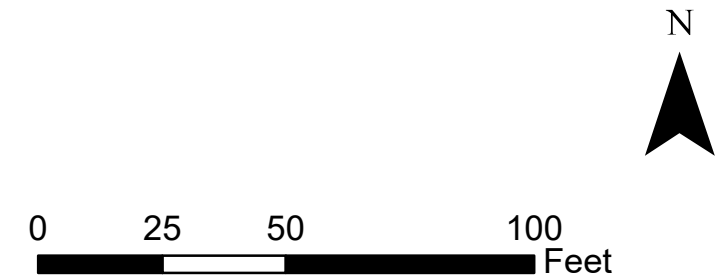
- Proposed Lining
- Sanitary Lateral, Abandoned
- Lined Pipe
- Sanitary Lateral
- Sanitary Main
- ⊗ Sanitary Lateral, Plugged
- Manhole

Example: 71-70682 (Manhole ID)

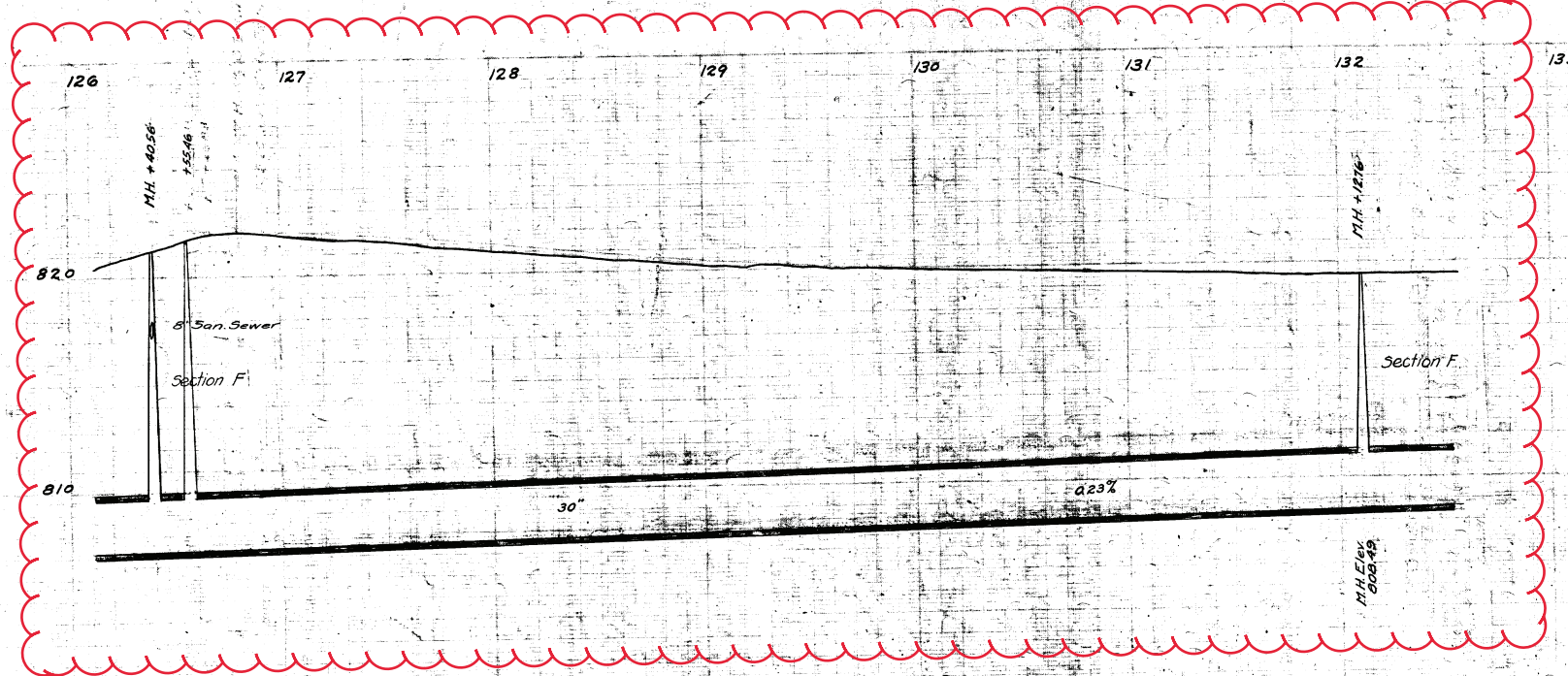
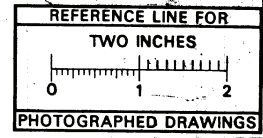
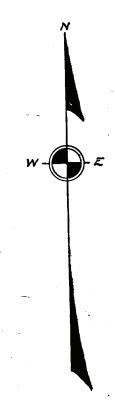
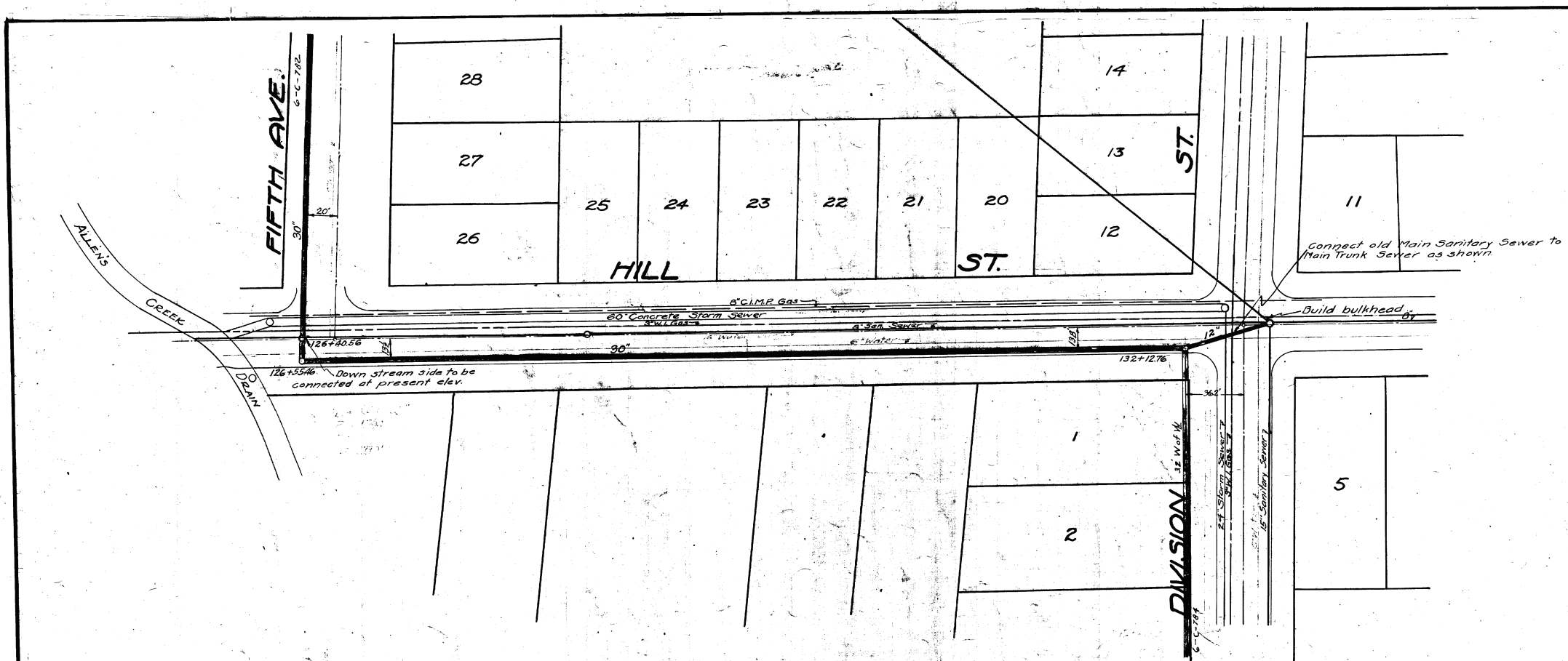
Example: 5.07 (Manhole Depth)

Hill St (S Division to S Fifth)

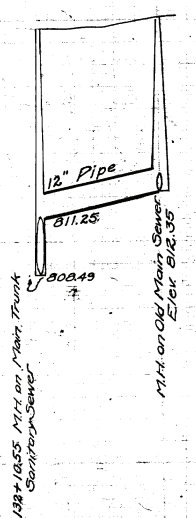
For terms and conditions of use see www.a2gov.org/terms



Washtenaw County



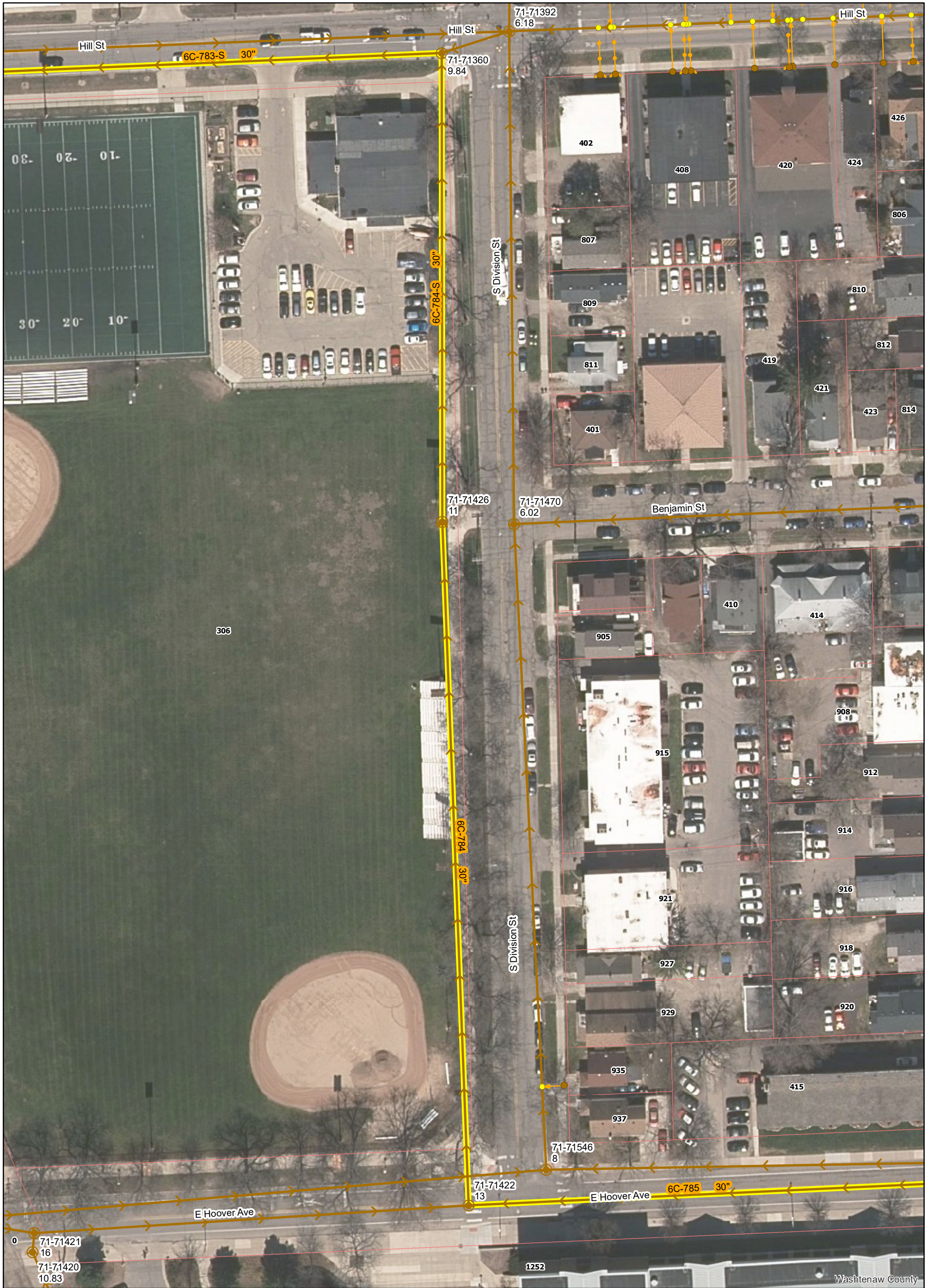
CONNECTION OF OLD MAIN SANITARY TO MAIN TRUNK SANITARY SEWER AT HILL & DIVISION.



Digital Status
Scanned On: 2-25-05
By: DKG
Despeckled: Yes
Vectors:
O.C.R.:

INDEX No 2019
SHELF 6
SIZE C
SUB. No 7B3
Drawn by
Traced by RD
Checked by

CITY ENGINEER'S OFFICE
ANN ARBOR, MICH.
PLAN AND PROFILE
OF
**MAIN TRUNK
SANITARY SEWER**
Hill - Fifth Ave to Division
Geo. H. Sondenburgh City Engineer
1926-9-24
Scale: Plan Horizontal - 40' Vertical - 1"

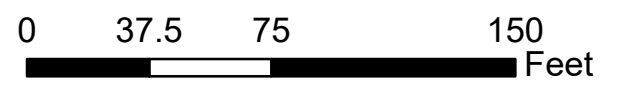


- Legend**
- Proposed Lining
 - Lined Pipe
 - Sanitary Main
 - Sanitary Lateral, Abandoned
 - Sanitary Lateral
 - X-X-X- Sanitary Lateral, Plugged
 - Manhole

Example: 71-70682 (Manhole ID)

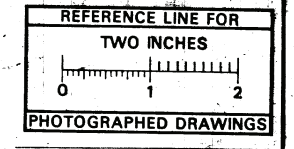
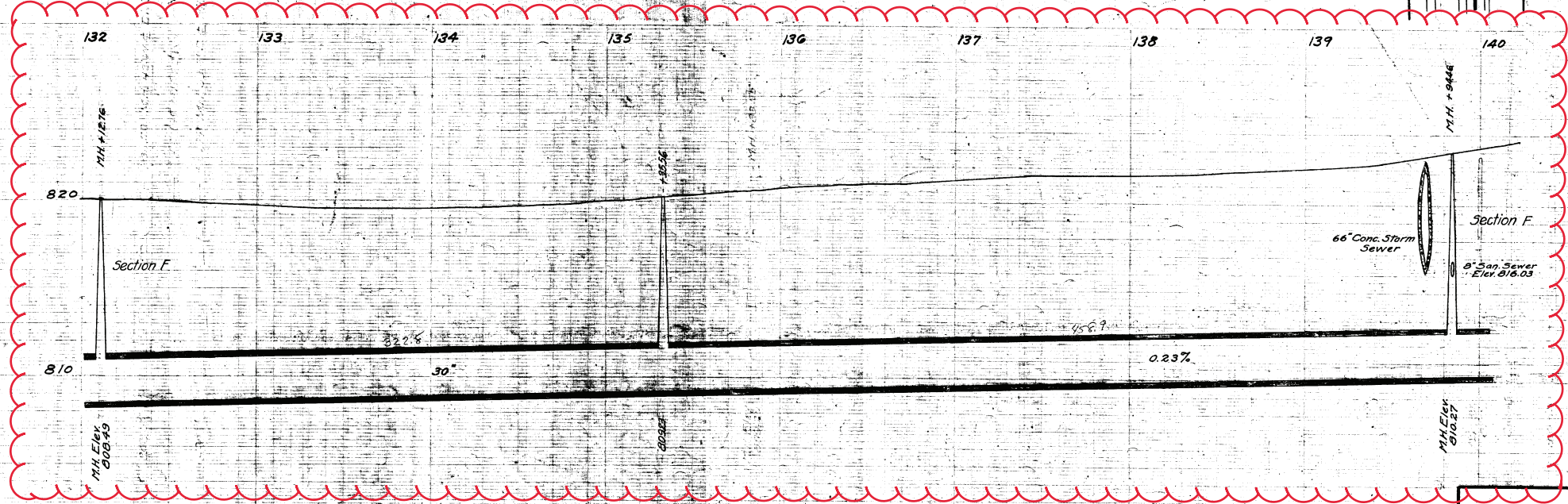
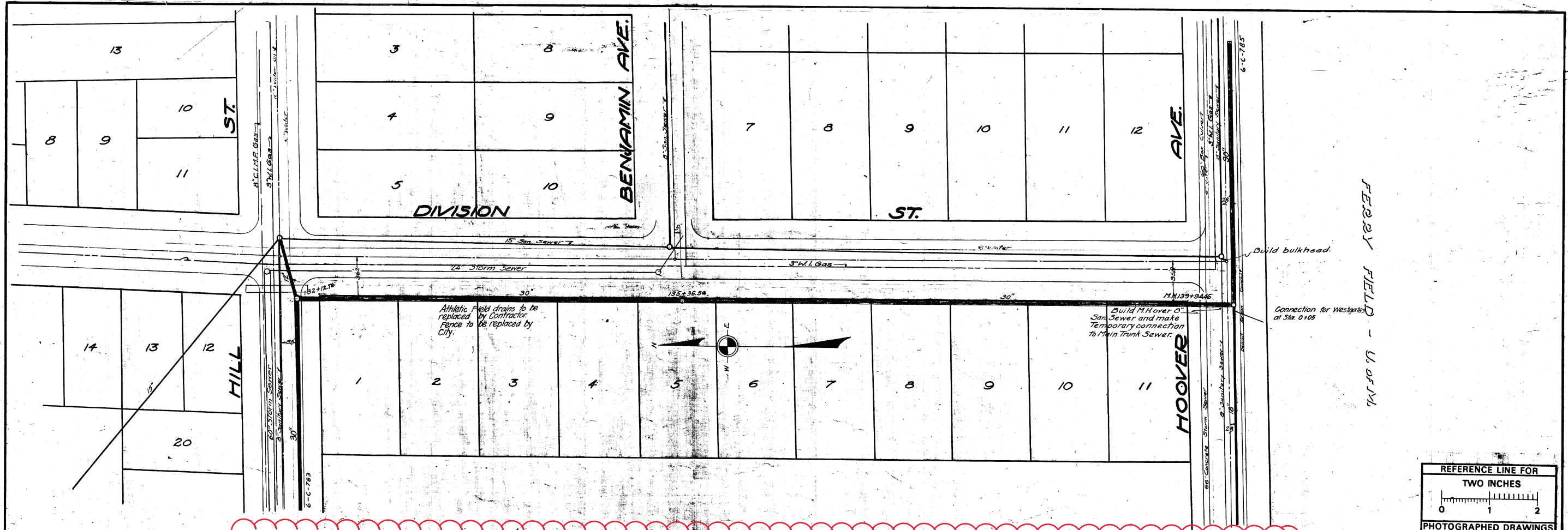
Example: 5.07 (Manhole Depth)

S Division (Hoover to Hill)



For terms and conditions of use see www.a2gov.org/terms

Washtenaw County



Digital Status
 Scanned On: 2-25-05
 By: DCK
 Despeckled: Yes
 Vectors:
 O.C.R.:

CITY ENGINEER'S OFFICE
ANN ARBOR, MICH.
 PLAN AND PROFILE
 of
**MAIN TRUNK
 SANITARY SEWER**
 Division - Hill to Hoover
 Geo. H. Sandenburgh, City Engineer
 1926-9-26
 Scales: Plan Hor. 1"=40' Prof. Vert. 1"=4'

INDEX No. 2020
 SHELF 6
 SIZE C
 SUB. No. 784

Drawn by
 Traced by KGD
 Checked by