

DOVER-PARKSIDE SUBDIVISION NO. 2

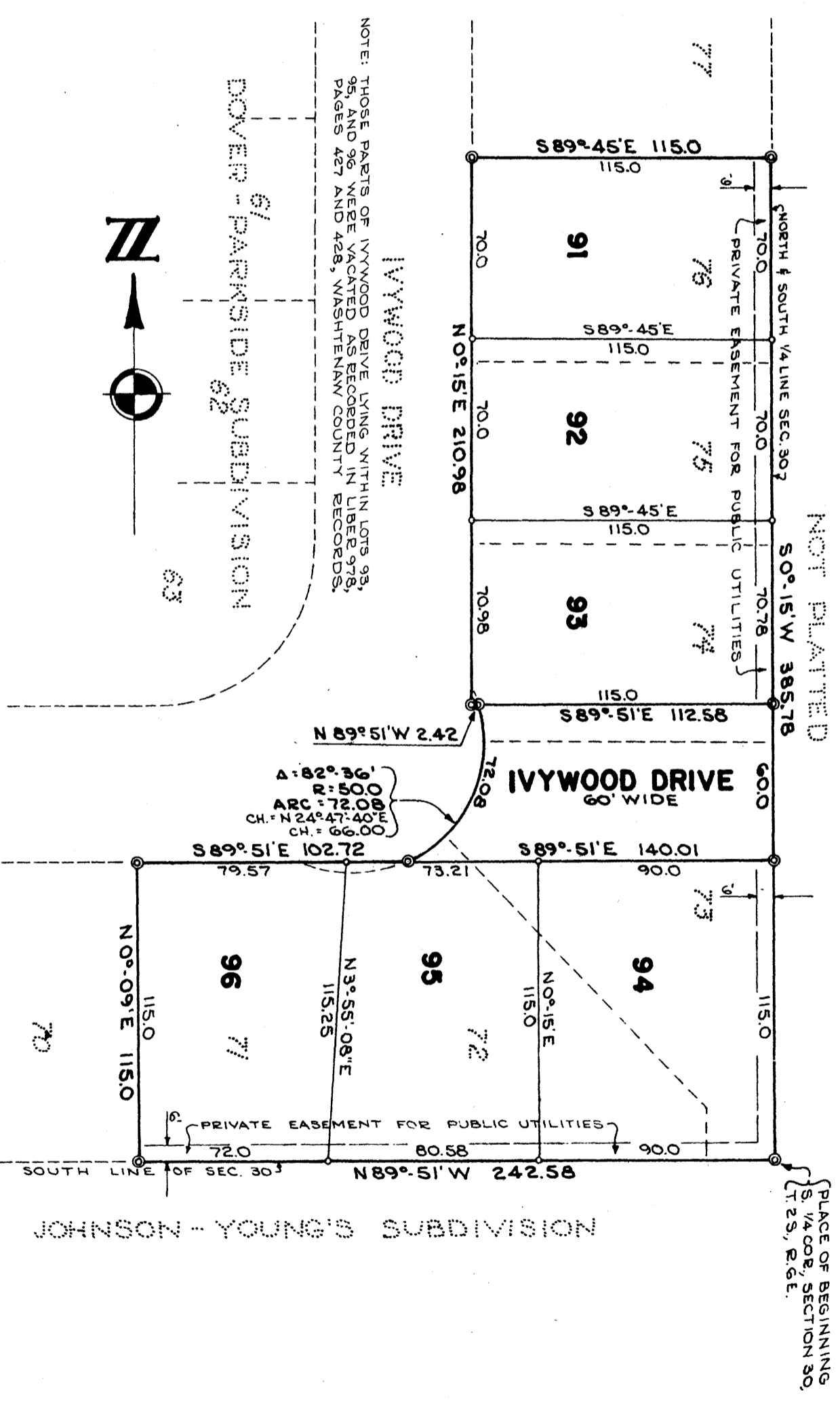
OF PART OF THE SW 1/4 OF SECTION 30, T2S, R6E,
CITY OF ANN ARBOR, WASHINGTON COUNTY, MICHIGAN,
BEING A REPLAT OF LOTS 71 THROUGH 76
OF "DOVER-PARKSIDE SUBDIVISION"



ALL DIMENSIONS IN FEET AND DECIMALS THEREOF
ALL DIMENSIONS ON CURVES ARE ARC LENGTHS
SURVEY BY ATWELL-HICKS, INC.

DEDICATION

KNOW ALL MEN BY THESE PRESENTS, that we Robert W. Schiede and Jean E. Schiede his wife and Ann Arbor Federal Savings and Loan Association, a Michigan Corporation by Frederick Schmidt, Vice-President and Gertrude E. Wenger, Assistant Secretary, and Vernon Development Co., a Michigan Corporation by George V. Airey President, and E. Maude Weeks Secretary, and Airey No. 5 Building Co., a Michigan Corporation by George V. Airey President, and E. Maude Weeks Secretary, and Airey No. 2 Building Co., a Michigan Corporation by George V. Airey President, and E. Maude Weeks Secretary, as proprietors, have caused the land embraced in the annexed plat to be surveyed, laid out and platted to be known as DOVER-PARKSIDE SUBDIVISION NO. 2 of part of the SW 1/4 of Section 30, T2S, R6E, City of Ann Arbor, Washtenaw County, Michigan, being a replat of Lots 71 through 76 of "DOVER-PARKSIDE SUBDIVISION", and that the drive as shown on said Plat is hereby dedicated to the public and the easements indicated on said Plat are not dedicated to the public but reserved for public utilities and any other use designated hereon and no permanent structures are to be located within said easement.



Signed in the Presence of:
Paul L. Proud, Jr., Witness
Anna M. Balhoff, Witness

Signed and Sealed in the Presence of:
James O. Weldon, Witness
Anna M. Balhoff, Witness

Signed and Sealed in the Presence of:
Paul L. Proud, Jr., Witness
Anna M. Balhoff, Witness

Signed and Sealed in the Presence of:
Paul L. Proud, Jr., Witness
Anna M. Balhoff, Witness

Signed and Sealed in the Presence of:
Paul L. Proud, Jr., Witness
Anna M. Balhoff, Witness

Signed and Sealed in the Presence of:
Paul L. Proud, Jr., Witness
Anna M. Balhoff, Witness

Signed and Sealed in the Presence of:
Paul L. Proud, Jr., Witness
Anna M. Balhoff, Witness

ACKNOWLEDGMENT
STATE OF MICHIGAN)
County of Washtenaw) ss:
On this 11th day of October, A. D. 1964, before me, a Notary Public in and for said County, personally came the above named Robert W. Schiede and Jean E. Schiede, his wife, known to me to be the persons who executed the above dedication, and acknowledged the same to be their free act and deed.

Anna M. Balhoff
Notary Public, Washtenaw County, Michigan
My Commission expires April 15, 1965

ACKNOWLEDGMENT
STATE OF MICHIGAN)
County of Washtenaw) ss:
On this 10th day of October, A. D. 1964, before me, a Notary Public in and for said County, personally appeared George V. Airey and E. Maude Weeks to me personally known, who being each by me duly sworn did say that they are the President and Secretary respectively of the Vernon Development Co. a Michigan Corporation, and that the seal affixed to said instrument is the corporate seal of said Corporation and that said instrument was signed and sealed in behalf of said Corporation by authority of its Board of Directors and the said George V. Airey and E. Maude Weeks acknowledged said instrument to be the free act and deed of said Corporation.

Anna M. Balhoff
Notary Public, Washtenaw County, Michigan
My Commission expires April 15, 1965

ACKNOWLEDGMENT
STATE OF MICHIGAN)
County of Washtenaw) ss:
On this 10th day of October, A. D. 1964, before me, a Notary Public in and for said County, personally appeared George V. Airey and E. Maude Weeks to me personally known, who being each by me duly sworn did say that they are the President and Secretary respectively of the Airey No. 2 Building Co. a Michigan Corporation, and that the seal affixed to said instrument is the corporate seal of said Corporation and that said instrument was signed and sealed in behalf of said Corporation by authority of its Board of Directors and the said George V. Airey and E. Maude Weeks acknowledged said instrument to be the free act and deed of said Corporation.

Anna M. Balhoff
Notary Public, Washtenaw County, Michigan
My Commission expires April 15, 1965

ACKNOWLEDGMENT
STATE OF MICHIGAN)
County of Washtenaw) ss:
On this 10th day of October, A. D. 1964, before me, a Notary Public in and for said County, personally appeared George V. Airey and E. Maude Weeks to me personally known, who being each by me duly sworn did say that they are the President and Secretary respectively of the Vernon Development Co. a Michigan Corporation, and that the seal affixed to said instrument is the corporate seal of said Corporation and that said instrument was signed and sealed in behalf of said Corporation by authority of its Board of Directors and the said George V. Airey and E. Maude Weeks acknowledged said instrument to be the free act and deed of said Corporation.

Anna M. Balhoff
Notary Public, Washtenaw County, Michigan
My Commission expires April 15, 1965

ACKNOWLEDGMENT
STATE OF MICHIGAN)
County of Washtenaw) ss:
On this 10th day of October, A. D. 1964, before me, a Notary Public in and for said County, personally appeared George V. Airey and E. Maude Weeks to me personally known, who being each by me duly sworn did say that they are the President and Secretary respectively of the Airey No. 2 Building Co. a Michigan Corporation, and that the seal affixed to said instrument is the corporate seal of said Corporation and that said instrument was signed and sealed in behalf of said Corporation by authority of its Board of Directors and the said George V. Airey and E. Maude Weeks acknowledged said instrument to be the free act and deed of said Corporation.

Anna M. Balhoff
Notary Public, Washtenaw County, Michigan
My Commission expires April 15, 1965

ACKNOWLEDGMENT
STATE OF MICHIGAN)
County of Washtenaw) ss:
On this 10th day of October, A. D. 1964, before me, James O. Weldon, Notary Public in and for said county appeared Frederick Schmidt and Gertrude E. Wenger to me personally known, who being each by me duly sworn did say that they are the Vice-President and Assistant Secretary respectively of Ann Arbor Federal Savings and Loan Association, a Michigan Corporation, and that the seal affixed to said instrument is the corporate seal of said Corporation and that said instrument was signed and sealed in behalf of said Corporation by authority of its Board of Directors and the said Frederick Schmidt and Gertrude E. Wenger acknowledged said instrument to be the free act and deed of said Corporation.

James O. Weldon
Notary Public, Washtenaw County, Michigan
My Commission expires 5-17-64

ACKNOWLEDGMENT
STATE OF MICHIGAN)
County of Washtenaw) ss:
On this 10th day of October, A. D. 1964, before me, a Notary Public in and for said County, personally appeared George V. Airey and E. Maude Weeks to me personally known, who being each by me duly sworn did say that they are the President and Secretary respectively of the Airey No. 2 Building Co. a Michigan Corporation, and that the seal affixed to said instrument is the corporate seal of said Corporation and that said instrument was signed and sealed in behalf of said Corporation by authority of its Board of Directors and the said George V. Airey and E. Maude Weeks acknowledged said instrument to be the free act and deed of said Corporation.

Anna M. Balhoff
Notary Public, Washtenaw County, Michigan
My Commission expires April 15, 1965

My Commission expires 5-17-64

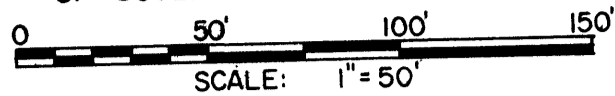
James O. Weldon
Notary Public, Washtenaw County, Michigan

Anna M. Balhoff
Notary Public, Washtenaw County, Michigan

My Commission expires April 15, 1965

DOVER-PARKSIDE SUBDIVISION NO. 2

OF PART OF THE SW 1/4 OF SECTION 30, T2S, R6E,
CITY OF ANN ARBOR, WASHTENAW COUNTY, MICHIGAN,
BEING A REPLAT OF LOTS 71 THROUGH 76
OF "DOVER-PARKSIDE SUBDIVISION"



ALL DIMENSIONS IN FEET AND DECIMALS THEREOF
ALL DIMENSIONS ON CURVES ARE ARC LENGTHS
SURVEY BY ATWELL-HICKS, INC.

CERTIFICATE OF APPROVAL BY THE CITY PLANNING COMMISSION

This plat was approved by the Planning Commission of the City of Ann Arbor, Michigan at a meeting held on the 24th day of October, 1961.

Casper M. Enkemann
Casper M. Enkemann, Chairman

John D. Paul
John D. Paul, Secretary

DESCRIPTION OF LAND PLATTED

The land embraced in the annexed plat of DOVER-PARKSIDE SUBDIVISION NO. 2 of part of the SW 1/4 of Section 30, T2S, R6E, City of Ann Arbor, Washtenaw County, Michigan, being a replat of Lots 71 through 76 of "DOVER-PARKSIDE SUBDIVISION" is described as follows:

Beginning at the South 1/4 corner of Section 30, T2S, R6E, City of Ann Arbor, Washtenaw County, Michigan; thence along the south line of said section, N 89° -51' W 242.58 feet; thence N 0° -09' E 115.0 feet; thence S 89° -51' E 102.72 feet; thence Northerly 72.08 feet in the arc of a nontangential circular curve concave to the Northwest, radius 50.0 feet, chord N 24° -47' -40" E 66.0 feet; thence N 89° -51' W 2.42 feet; thence N 0° -15' E 210.98 feet; thence S 89° -45' E 115.0 feet; thence along the North and South 1/4 line of said section, S 0° -15' W 385.78 feet to the Place of Beginning, being a part of the SW 1/4 of Section 30, T2S, R6E, City of Ann Arbor, Washtenaw County, Michigan and a replat of Lots 71 through 76 of "DOVER-PARKSIDE SUBDIVISION", containing 6 Lots numbered 91 through 96 inclusive.

CERTIFICATE OF MUNICIPAL APPROVAL

This plat was approved by the Common Council of the City of Ann Arbor at a meeting held October 29, 1961 and is in compliance with SECTION 19 and 20 of Act 172, of 1929, and that the width of lots is in compliance with requirements of Section 30, Act 172, of 1929, as amended.

Fred J. Looker
Fred J. Looker, Clerk

COUNTY TREASURER'S CERTIFICATE Office of County Treasurer, Washtenaw County

I hereby certify, that there are no tax liens or titles held by the State on the lands described hereon, and that there are no tax liens or titles held by individuals on said lands for the five years preceding the 24th day of November, 1961, and that the taxes for said period of five years are all paid, as shown by the records of this office.

This certificate does not apply to taxes, if any, now in process of collection by township, city or village collecting officer.

W.F. Verner
W.F. Verner, County Treasurer

SURVEYOR'S CERTIFICATE

I hereby certify that the plat hereon delineated is a correct one and that permanent metal monuments consisting of bars not less than one-half inch in diameter and 36 inches in length, or shorter bars of not less than one-half inch in diameter lapped over each other at least 6 inches with an over-all length of not less than 36 inches, encased in a concrete cylinder at least 4 inches in diameter and 36 inches in depth have been placed at points marked thus (@) as thereon shown at all angles in the boundaries of the land platted, at all the intersections of streets, intersections of alleys, or of streets and alleys, and at the intersections of streets and alleys with the boundaries of the plat as shown on said plat.

Robert J. Jagow
Robert J. Jagow
Registered Land Surveyor # 6998

APPROVAL BY COUNTY PLAT BOARD

This plat was approved on the 8th day of February, 1962, by the Washtenaw County Plat Board.

Patricia Newkirk Hardy *John H. Flook*
Patricia Newkirk Hardy John H. Flook
County Register of Deeds County Drain Commissioner

J. Martin Rempp *Herbert G. Loeffler*
J. Martin Rempp Herbert G. Loeffler
Auditor Auditor

John P. Cook
John P. Cook
Auditor