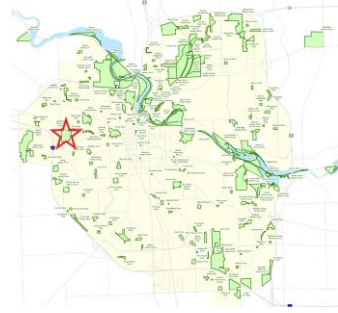


# Veteran's Memorial Park Display Garden

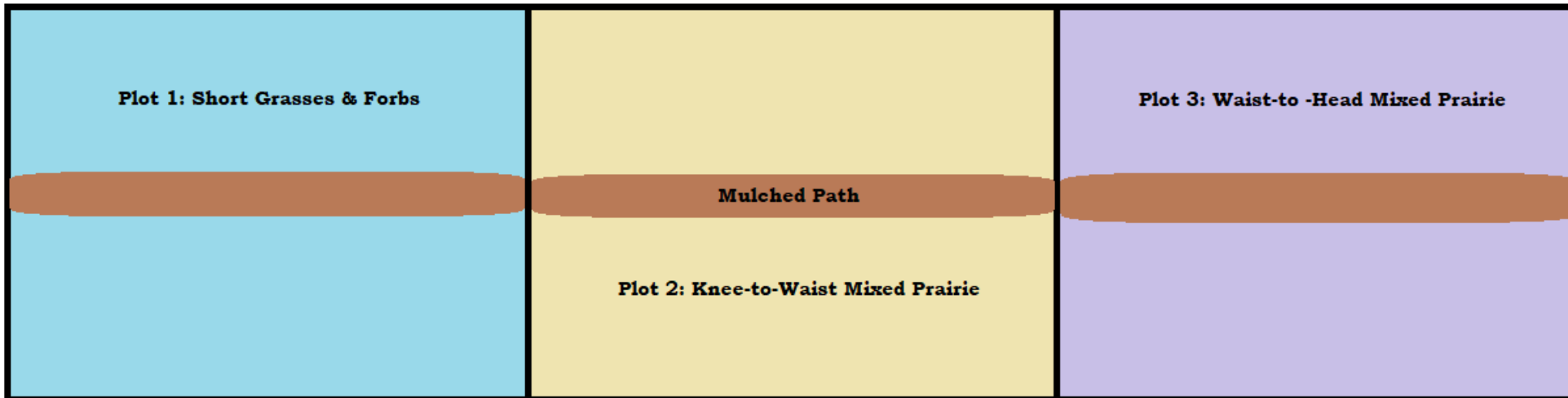
---

An Educational and Display Lawn Alternative Project

# Location



Veteran's Memorial Park  
Former Garden Bed  
~60x15ft Plot  
Divided into 3 sections



Veteran's  
Facility  
Building

# Timeline

## 2023

- May
  - Pretreatment
- September
  - Remove remaining plants
- October
  - Plant

## 2024

- March
  - Develop and install signage
- May/June
  - Maintenance event
  - Recruit for Adopter
  - Photo monitoring
- October
  - Maintenance event

# Pre-treatment

## Steps

Weed-whip vegetation

Lay fine mulch around outermost 12" at a depth of ~6"

Lay arborist chips to interior of bed at a depth of 12"

## Why

Facilitate mulch application

Reduce washout from edge of beds

Stimulate microbial growth to deplete soil nitrogen

Too deep for plants to access light with sufficient gas exchange to stimulate growth



# Planting Process

- Apply mulch and Arborist chips in early June
- Weed remaining plants end of September
- Mark out sections (3 plots and center path) for volunteers
- Planting
  - Two workdays for volunteers to plant both sections
  - Plants are clustered together in 2-3 of a kind, with clusters intermixed throughout the plots
  - Watered in at the time of planting; plenty of October rain so no follow-up waterings required



# Reflections on Installation

- Mulching process was more effective than anticipated
  - ~ 75% of vegetation died back, and only 11 total hours (2/3 of which were volunteer) were required
- Pricing for plug plants fell into expected range, and survival in the first month was high (>90% of plugs were still alive)
- Sourcing for the desired diversity was difficult
  - Some original species which might be good competitors were unavailable (*Sorghastrum Nutans*, *Ratibida Pinnata*, *Carex Bromoides* and *Carex Rosea*)



Plot 1: Short Grasses & Forbs (Flowering Perennials)

Includes a mix of: *Carex Eburna*, *Carex Brevior*, *Carex Radiata*, *Waldsteinia fragaroides*, *Geum Triflorum*



## Plot 2: Knee-to-Waist Mixed Prairie

- Includes a mix of: *Panicum virgatum*, *Schizachyrium scoparium*, *Sporobolus heterolepis*, *Liatris aspera*, *Baptisia Lactea*, *Asclepias sullivantii*





## Plot 3: Waist-to-Head Mixed Prairie

- *Andropogon gerardii*, *Panicum virgatum*, *Schizachyrium Scoparium*, *Asclepias Sullivanti*, *Baptisia Australis*



Before (May  
2023)



Mulched  
(June 2023)



Planted  
(October  
2023)