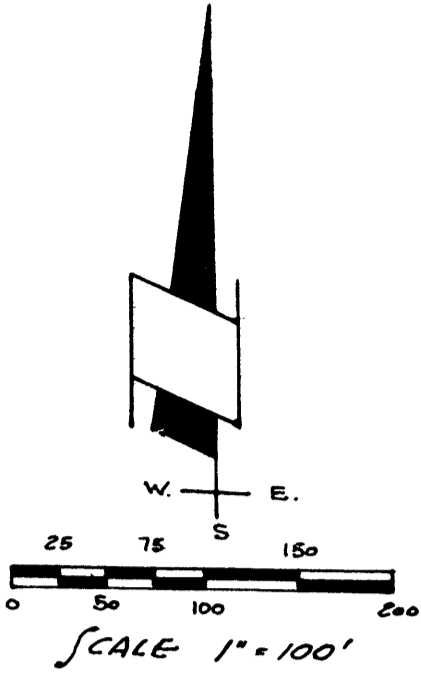


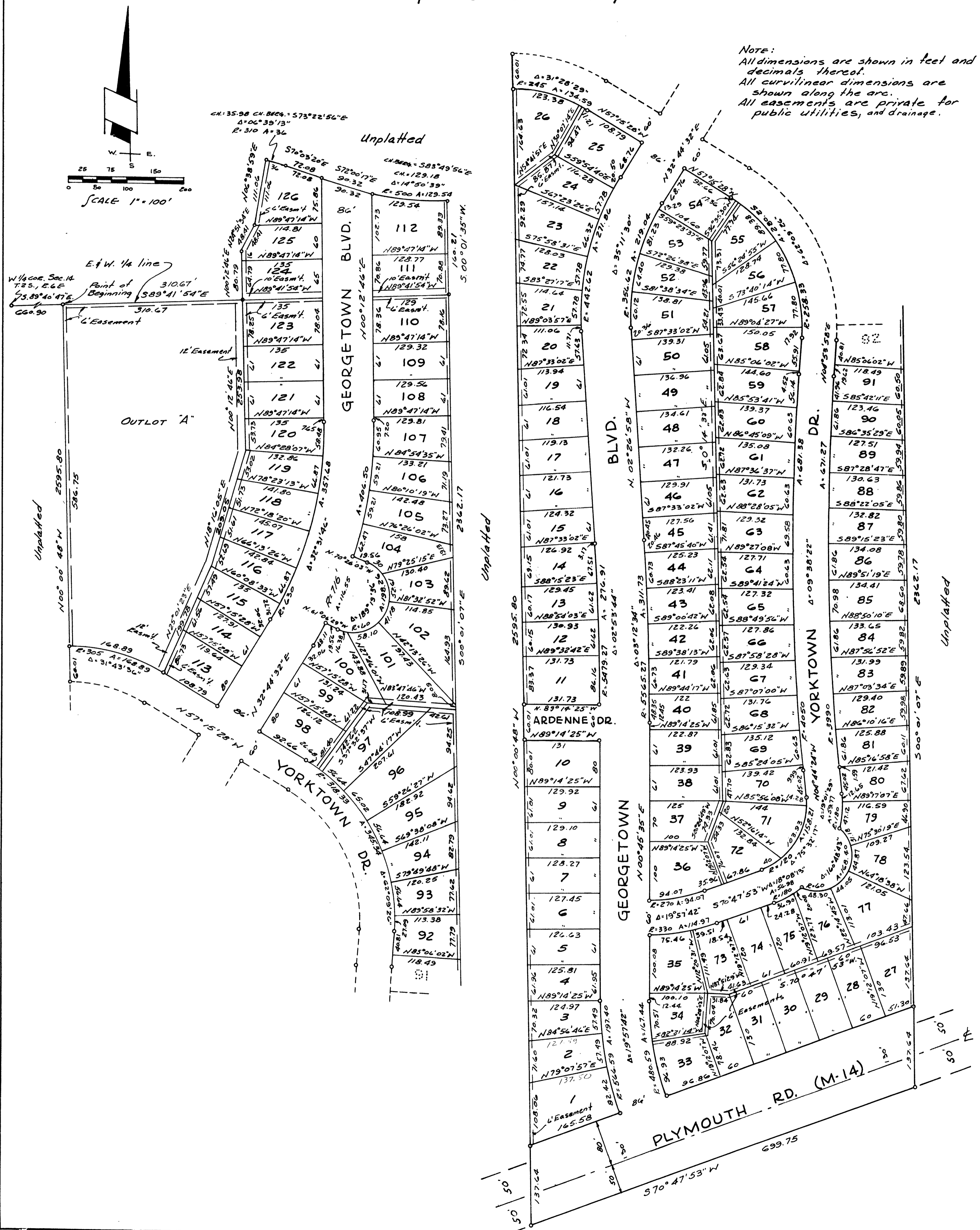
FO171001 1 OF 2
FOREST HILLS SUBDIVISION
L288A:16 PAGE:12-13 12/18/1961

FOREST HILLS SUBDIVISION

PART OF THE W. 1/2 OF THE W. 1/2 OF SEC. 14, T. 2S., R. 6E.
CITY OF ANN ARBOR, WASHTENAW CO., MICHIGAN



NOTE:
All dimensions are shown in feet and decimals thereof.
All curvilinear dimensions are shown along the arc.
All easements are private for public utilities, and drainage.



FOREST HILLS SUBDIVISION

PART OF THE W. 1/2 OF THE W. 1/2 OF SEC. 14, T. 2 S., R. 6 E.
CITY OF ANN ARBOR, WASHTENAW CO., MICHIGAN

APPROVAL OF COUNTY PLAT BOARD

This plat was approved on the 6th day of December 1961
by the Washtenaw County Plat Board.

Patricia Newkirk Hardy
Patricia Newkirk Hardy (County Register of Deeds)
J. Martin Remp
J. Martin Remp (Auditor)
Herbert G. Loeffler
Herbert G. Loeffler (Auditor)
John H. Flook
John H. Flook (County Drain Commissioner)

CERTIFICATE OF MUNICIPAL APPROVAL

The plat was approved by the Common Council of the City of
Ann Arbor at a meeting held October 16, 1961 and that the
width of lots is in compliance with requirements of Section 30,
Act 172, of 1929, as amended, and is in compliance with Section 19a. AK

Fred J. Looker
Fred J. Looker, Clerk

CERTIFICATE OF APPROVAL BY THE CITY PLANNING COMMISSION

The plat was approved by the Planning Commission of the City of
Ann Arbor, Michigan at a meeting held on the 10th day of October 1961.

Casper M. Enkemann
CASPER M. ENKEMANN, Chairman
John D. Paul
John D. Paul, Secretary

COUNTY TREASURER'S CERTIFICATE

Office of County Treasurer, Washtenaw County, I hereby certify
that there are no tax liens or titles held by the State on the lands des-
cribed hereon, and that there are no tax liens or titles held by individuals
on said lands, for the five years preceding the 24th day of November 1961,
and that the taxes for said period of five years are all paid, as shown by
the records of this office.

This certificate does not apply to taxes,
if any, now in process of collection by Township, City or Village collecting
officers.

W. F. Verner
W. F. Verner (County Treasurer)

CERTIFICATE AS TO STATE TRUNK LINE OR FEDERAL AID ROADS

We hereby certify that said plat appears to include land located on a state
trunk line or federal aid road.

COUNTY PLAT BOARD

Patricia Newkirk Hardy
Patricia Newkirk Hardy (County Register of Deeds)
J. Martin Remp
J. Martin Remp (Auditor)
Herbert G. Loeffler
Herbert G. Loeffler (Auditor)
John P. Cook
John P. Cook (Auditor)
John H. Flook
John H. Flook (County Drain Commissioner)

I hereby certify this copy is a true copy of map
or plat forwarded the Register of deeds for
recording.
Date December 15, 1961
FILED IN AUDITOR GENERAL'S DEPT.
Date December 21, 1961
EXAMINED AND APPROVED
Date December 15, 1961

Billie S. Farr
BILLIE S. FARR, D.W.
AUDITOR GENERAL
By Richard E. Loney
Richard E. Loney - Plat Examiner

Register's Office
Washtenaw County
Plat of Forest Hills Subdivision
was Recorded this 18th day of
December A.D., 1961 at 11:54 o'clock
A.M., in Liber 16 of Plats
on Page 12-13
Patricia Newkirk Hardy
Register of Deeds

DEDICATION

KNOW ALL MEN BY THESE PRESENTS, that we SYLVAN DEVELOPMENT
COMPANY, a Michigan Corporation by Bert L. Smokler, President, and
David S. Snyder, Secretary, as proprietor, have caused the land em-
braced in the annexed plat to be surveyed, laid out and platted to be
known as FOREST HILLS SUBDIVISION, part of the W. 1/2 of the W. 1/2 of
Sec. 14, T. 2 S., R. 6 E., City of Ann Arbor, Washtenaw County,
Michigan, and the streets and alleys as shown on said plat are hereby
dedicated to the use of the public, and that the easements indicated on said
plat are not dedicated to the public but reserved for public utilities, and any other
use designated hereon, and no permanent structures are to be located within said easements.
Signed and Sealed in the presence of:

Constance Caunt
Constance Caunt (Witness)
Priscilla Harper
Priscilla Harper (Witness)

SYLVAN DEVELOPMENT COMPANY
Bert L. Smokler
Bert L. Smokler, President
David S. Snyder
David S. Snyder, Secretary

ACKNOWLEDGMENT

STATE OF MICHIGAN)
COUNTY OF WAYNE)

On this 9th day of Oct. 1961 before me, a Notary Public
in and for said County, personally came the above named Bert L. Smokler
and David S. Snyder to me personally know, who being each by me duly
sworn did say that they are the President and Secretary respectively
of the SYLVAN DEVELOPMENT COMPANY, a Michigan Corporation, and that
the seal affixed to said instrument is the corporation seal of said
corporation and that the said instrument was signed and sealed in be-
half of said corporation by authority of its Board of Directors; and
the said officers acknowledged the said instrument to be the free act
and deed of said corporation.

Ruth A. Chesney Notary Public, Wayne County
Ruth A. Chesney
My Commission expires May 7, 1962

DESCRIPTION OF LAND PLATTED

The land embraced in the annexed plat of FOREST HILLS SUBDIVISION,
part of the W. 1/2 of the W. 1/2 of Sec. 14, T. 2 S., R. 6 E., City of Ann Arbor,
Washtenaw County, Michigan, is described as follows:

Commencing at the West 1/4 corner of Sec. 14, T. 2 S., R. 6 E., City
of Ann Arbor, Washtenaw County, Michigan; thence S. 89° 40' 47" E., 660.90 feet
along the E. and W. 1/4 line of said Sec. 14, to the point of beginning; thence
S. 89° 41' 54" E. 310.67 feet along the E. and W. 1/4 line of said Sec. 14, to
a point; thence N. 00° 12' 46" E. 80.79 feet to a point; thence N. 24° 51' 34"
E. 48.41 feet to a point; thence N. 06° 38' 59" E. 111.06 feet to a point;
thence along the arc of a curve to the right, whose radius is 310 feet, internal
angle 06° 39' 13", chord 35.98 feet, chord bearing S. 73° 22' 56" E., 36.00
feet to a point; thence S. 70° 03' 20" E. 72.08 feet to a point; thence S. 72°
00' 17" E. 90.32 feet to a point; thence along the arc of a curve to the left,
whose radius is 500 feet, internal angle 14° 50' 39", chord 129.18 feet, chord
bearing S. 83° 49' 56" E. 129.54 feet to a point; thence S. 00° 01' 35" W.
160.21 feet to a point on the E. and W. 1/4 line of said Sec. 14; thence
S. 00° 01' 07" E. 2362.17 feet to a point on the South line of 100 feet wide
Plymouth Road (M-14) Right-of-Way; thence S. 70° 47' 53" W. 699.75 feet along
the South line of said Plymouth Road to a point; thence N. 00° 00' 48" W.
2595.80 feet to the point of beginning; containing 126 lots, numbered 1 through
126 inclusive, and Outlet A.

SURVEYOR'S CERTIFICATE

I hereby certify that the plat hereon delineated is a correct one
and that permanent metal monuments consisting of bars not less than one-half
inch in diameter and 36 inches in length, or shorter bars of not less than one-
half inch in diameter lapped over each other at least 6 inches with an over-all
length of not less than 36 inches encased in a concrete cylinder at least
4 inches in diameter and 36 inches in depth have been placed at points marked
thus (O) as thereon shown at all angles in the boundaries of the land platted,
at all the intersections of streets, intersections of alleys, or of streets
and alleys, and at the intersections of streets and alleys with the boundaries
of the plat as shown on said plat.

Eugene F. Zeimey
EUGENE F. ZEIMEY
Registered Professional Engineer
Number 9209

John L. Markie
APPROVED 12/14/61
DATE
STATE SURVEY COMMISSIONER

BY _____