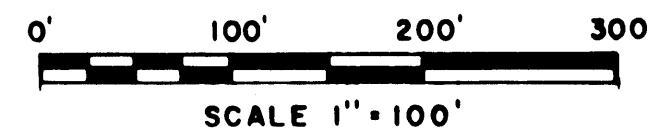
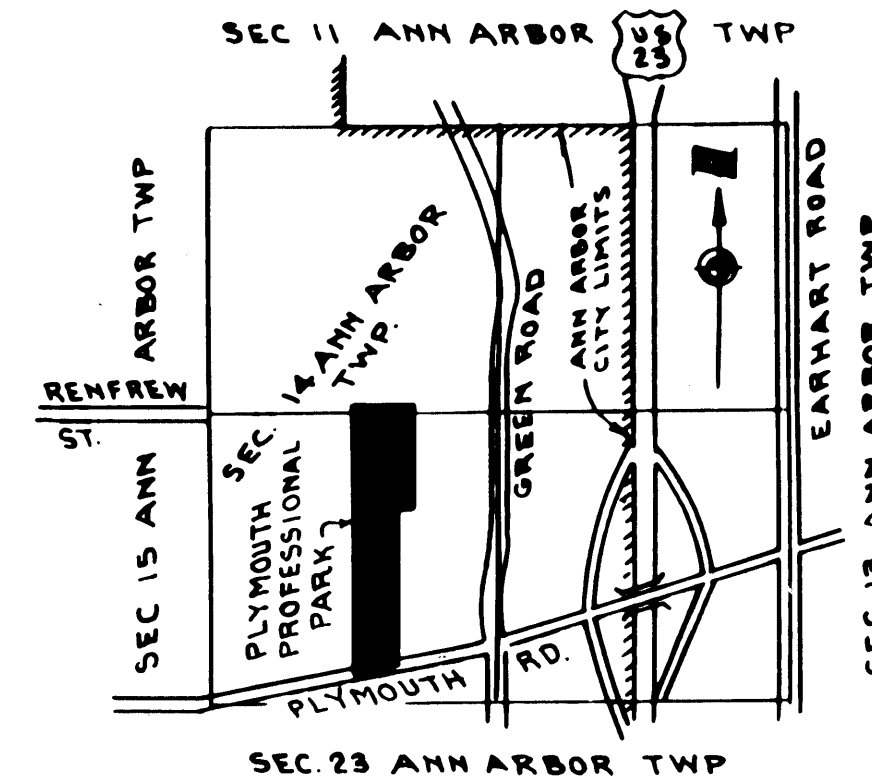


PLYMOUTH PROFESSIONAL PARK

A SUBDIVISION OF PART OF THE W 1/2 OF SECTION 14, T25, R6E,
 CITY OF ANN ARBOR, WASHTENAW COUNTY, MICHIGAN

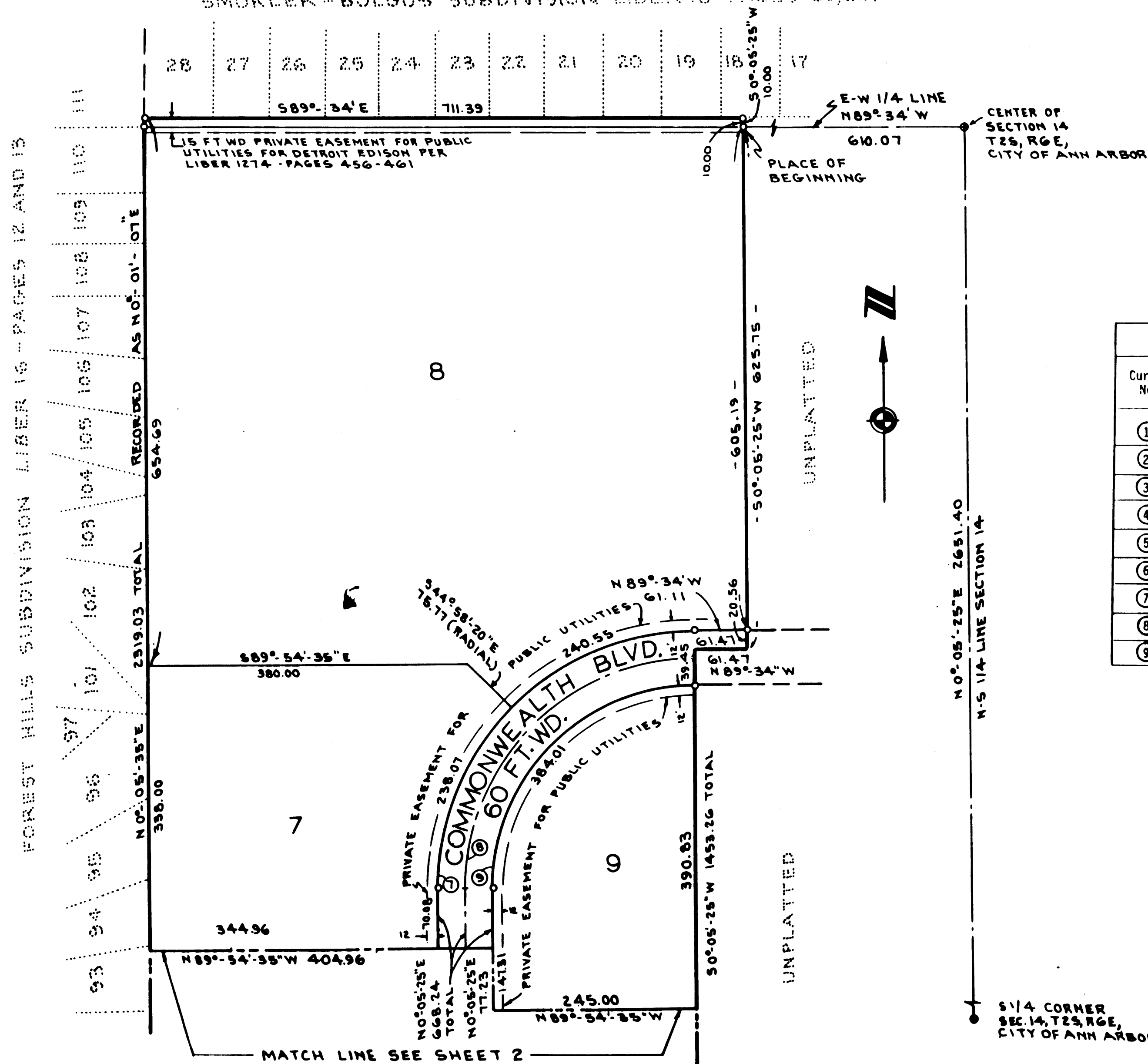


ALL DIMENSIONS ARE IN FEET
 ALL DIMENSIONS ON CURVES ARE ARC LENGTHS
 ALL BEARINGS ARE RELATED TO "SMOKLER-BOLGOS SUBDIVISION"
 LIBER 18 - PAGES 59, 60, AND 61
 CONCRETE MONUMENT SET AT POINT MARKED "O"
 3/4" X 18" IRON PIPE SET AT ALL LOT CORNERS



VICINITY SKETCH

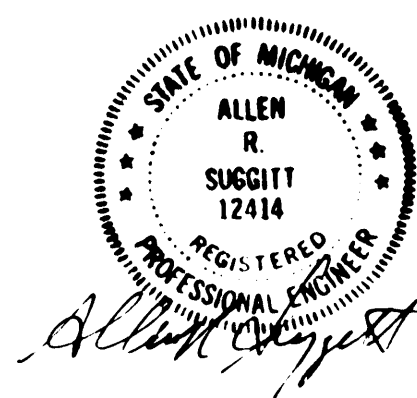
SMOKLER-BOLGOS SUBDIVISION LIBER 18 - PAGES 59, 60, AND 61



PREPARED AND DRAFTED BY ATWELL-HICKS, INC.
 110 NORTH FIRST ST., ANN ARBOR, MICHIGAN 48104

CURVE DATA

Curve No.	Arc Length	Delta	Radius	Chord	
				Bearing	Distance
①	247.66	43°-00'-00"	330.00	N 2°-24'-30" E	241.89
②	225.15	43°-00'-00"	300.00	N 2°-24'-30" E	219.90
③	202.63	43°-00'-00"	270.00	N 2°-24'-30" E	197.91
④	195.38	23°-49'-05"	470.00	N 11°-59'-55" E	193.98
⑤	207.85	23°-49'-05"	500.00	N 11°-59'-55" E	206.36
⑥	220.32	23°-49'-05"	530.00	N 11°-59'-55" E	218.74
⑦	478.62	90°-20'-35"	303.54	N 45°-15'-40" E	430.55
⑧	431.14	90°-18'-20"	273.54	N 45°-14'-35" E	307.88
⑨	384.01	90°-20'-35"	243.54	N 45°-15'-40" E	345.45



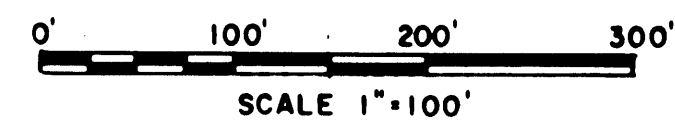
PREPARED AND DRAFTED BY ATWELL-HICKS, INC.
 110 NORTH FIRST ST., ANN ARBOR, MICHIGAN 48104

632-1

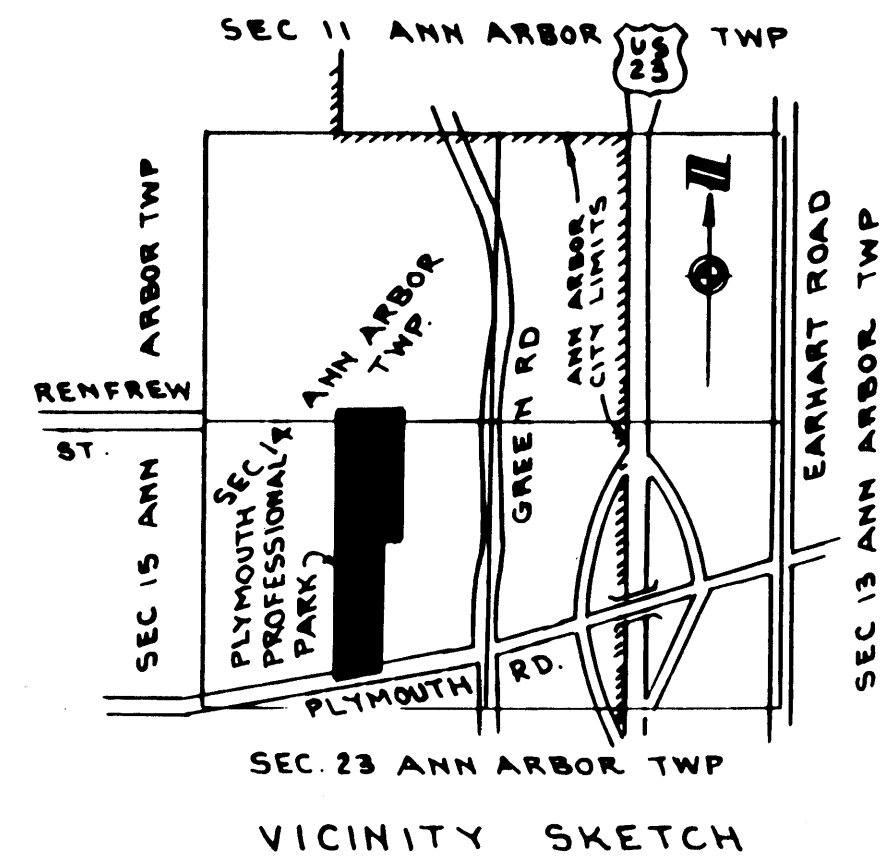
SHEET 1 OF 3

PLYMOUTH PROFESSIONAL PARK

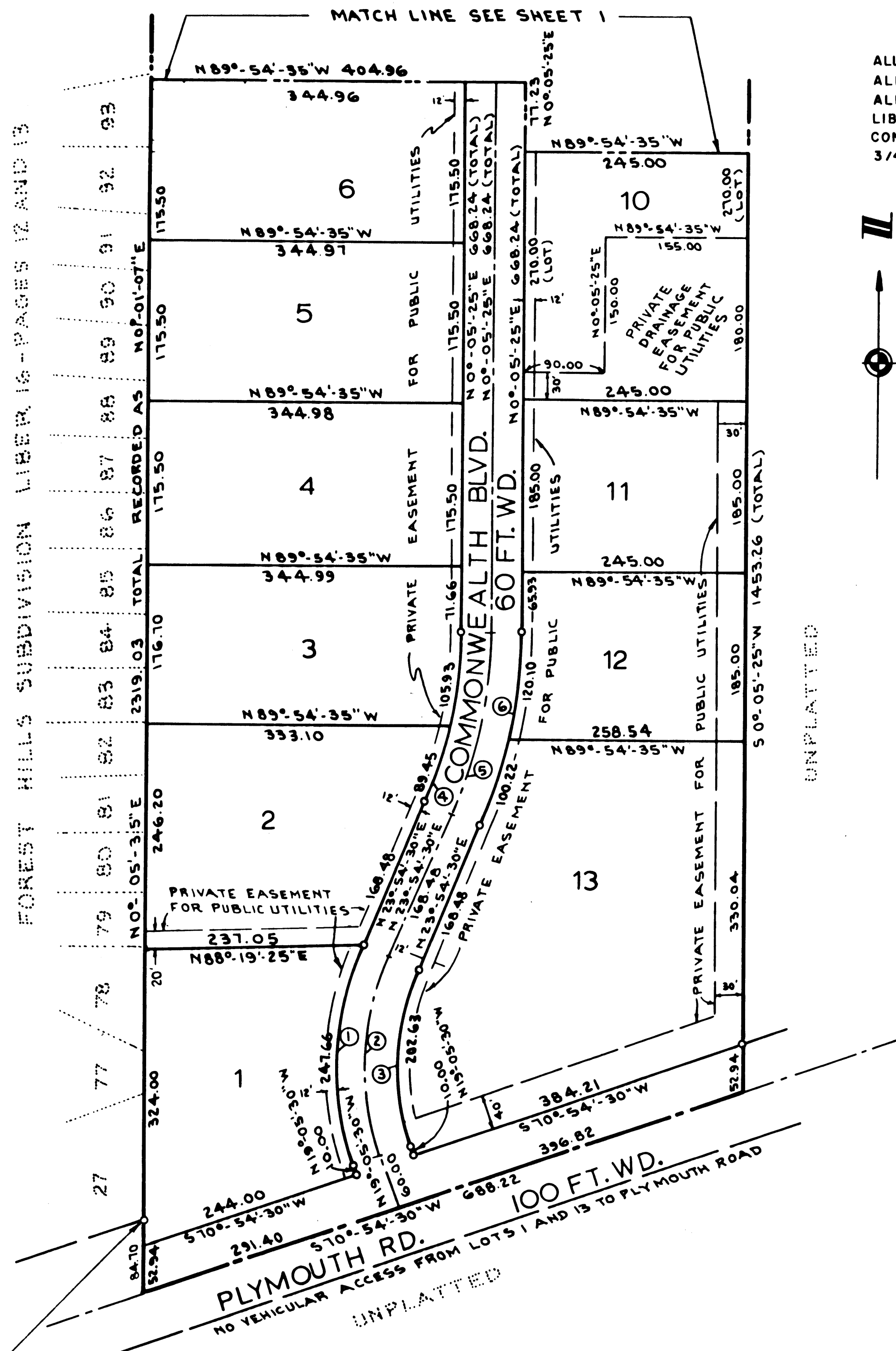
A SUBDIVISION OF PART OF THE W 1/2 OF SECTION 14, T25, R6E,
 CITY OF ANN ARBOR, WASHTENAW COUNTY, MICHIGAN



ALL DIMENSIONS ARE IN FEET
 ALL DIMENSIONS ON CURVES ARE ARC LENGTHS
 ALL BEARINGS ARE RELATED "SMOKLER-BOLGOS SUBDIVISION"
 LIBER 18 - PAGES 59, 60 AND 61
 CONCRETE MONUMENT SET AT POINTS MARKED "O"
 3/4" X 18" IRON PIPE SET AT ALL LOT CORNERS



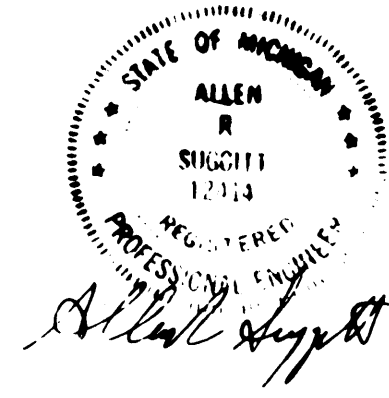
FOREST HILLS SUBDIVISION LIBER 16 - PAGES 12 AND 13



UNPLATTED

CURVE DATA

Curve No.	Arc Length	Delta	Radius	Chord	
				Bearing	Distance
①	247.66	43°-00'-00"	330.00	N 2°-24'-30" E	241.89
②	225.15	43°-00'-00"	300.00	N 2°-24'-30" E	219.90
③	202.63	43°-00'-00"	270.00	N 2°-24'-30" E	197.91
④	195.38	23°-49'-05"	470.00	N 11°-59'-55" E	193.98
⑤	207.85	23°-49'-05"	500.00	N 11°-59'-55" E	206.36
⑥	220.32	23°-49'-05"	530.00	N 11°-59'-55" E	218.74
⑦	478.62	90°-20'-35"	303.54	N 45°-15'-40" E	430.55
⑧	431.14	90°-18'-20"	273.54	N 45°-14'-35" E	387.88
⑨	384.01	90°-20'-35"	243.54	N 45°-15'-40" E	345.45



PREPARED AND DRAFTED BY ATWELL-HICKS, INC.
 110 NORTH FIRST STREET, ANN ARBOR, MICHIGAN
 48104

NOTE: SET CONCRETE MONUMENT N0°05'-35"E
 31.76 FT FROM THE SW CORNER OF LOT 1,
 ACTUAL CORNER FALLS IN SIDEWALK

PLYMOUTH PROFESSIONAL PARK

A SUBDIVISION OF PART OF THE W 1/2 OF SECTION 14, T2S, R6E,
 CITY OF ANN ARBOR, WASHTENAW COUNTY, MICHIGAN

SURVEYOR'S CERTIFICATE

I, Allen R. Suggitt, surveyor, certify:

That I have surveyed, divided and mapped the land shown on this plat described as follows: PLYMOUTH PROFESSIONAL PARK, a subdivision of part of the W 1/2 of Section 14, T2S, R6E, City of Ann Arbor, Washtenaw County, Michigan. Commencing at the South 1/4 corner, Section 14, T2S, R6E, City of Ann Arbor, Washtenaw County, Michigan; thence N 0°-05'-25" E 2651.40 feet along the N-S 1/4 line of said section to the center of Section 14, T2S, R6E, City of Ann Arbor, Michigan; thence N 89°-34' W 610.07 feet along the E-W 1/4 line of said section for a PLACE OF BEGINNING; thence S 0°-05'-25" W 625.75 feet; thence N 89°-34' W 61.47 feet; thence S 0°-05'-25" W 1453.26 feet; thence S 70°-54'-30" W 688.22 feet along the centerline of Plymouth Road; thence N 0°-05'-35" E 2319.03 feet along the east line of Forest Hills Subdivision as recorded in Liber 16 of Plats, pages 12 and 13, Washtenaw County Records; thence S 89°-34' E 711.39 feet along the south line of Smokler Bolgos Subdivision as recorded in Liber 18 of Plats, pages 59-61, Washtenaw County Records; thence S 0°-05'-25" W 10.00 feet to the Place of Beginning, containing 13 lots, numbered 1 through 13 inclusive and containing 33.79 acres of land more or less.

That I have made such survey, land-division and plat by the direction of the owners of such land.

That such plat is a correct representation of all the exterior boundaries of the land surveyed and the subdivision of it.

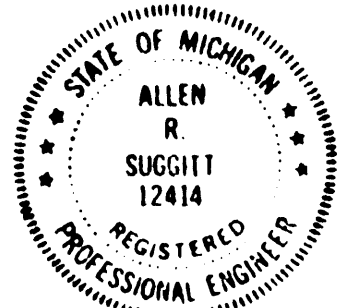
That the required monuments and lot markers have been located in the ground or that surety has been deposited with the municipality, as required by Section 125 of the Act.

That the accuracy of survey is within the limits required by Section 126 of the Act.

That the bearings shown on the plat are expressed as required by Section 126 (3) of the Act and as explained in the legend.

Date July 3, 1980

ATWELL-HICKS, INC.



Allen R. Suggitt
 Allen R. Suggitt, President
 P.E. No. 12414
 110 North First Street
 Ann Arbor, Michigan 48104

PROPRIETOR'S CERTIFICATE - CO PARTNERSHIP

Plymouth Square, a Louisiana partnership as proprietor, has caused the land to be surveyed, divided, mapped and dedicated as represented on this plat and that the streets are for the use of the public; that the public utility easements are private easements and that all other easements are for the uses shown on the plat; and that Lots 1 and 13 shall have no vehicular access to Plymouth Road.

Witnesses:

Plymouth Square, a Louisiana partnership, (Certification of Assumed Name pursuant to Michigan Statutes Annotated 1982 let. seq. filed with Washtenaw County Clerk, May 30, 1979, File number 23600), by its general partner First Properties Associates, a Michigan Partnership, by its general partner, First Martin Corporation, a Michigan corporation.

Mary A. Borowski
 Mary A. Borowski

William C. Martin
 William C. Martin, President
 First Martin Corporation
 115 Depot Street
 Ann Arbor, Michigan 48104

Charles P. Mullen
 Charles P. Mullen

GENUINE TRUE COPY OF
 RECORDED PLAT
 BY DEPARTMENT OF COMMERCE

Richard E. Lomax
 Richard E. Lomax, L.S.
 Manager Plat Section

DATE May 14, 1981

ACKNOWLEDGEMENT - CORPORATION

STATE OF MICHIGAN)
) ss.
 County of Washtenaw)

Personally came before me this 10th day of July, 1980, William C. Martin, President of First Martin Corp., to me known to be the person who executed the foregoing instrument and to me known to be such President of said corporation, and acknowledged that he executed the foregoing instrument on behalf of the Corporation as the free act and deed of Said Corporation.

Dorothy M. Ortbring
 Dorothy M. Ortbring

Notary Public, Washtenaw County,
 Michigan

My Commission expires: May 31, 1982

PROPRIETOR'S CERTIFICATE:

Ann Arbor Trust Company, a Michigan Banking Institution, duly organized and existing under the laws of the State of Michigan by William Broucek, Executive Vice-President and Jeffrey A. Carter, Vice-President, as proprietor has caused the land embraced in this plat to be surveyed, divided, mapped and dedicated as represented on this plat and that the streets are for the use of the public; that the public utility easements are private easements and that all other easements are for the uses shown on the plat and that lots 1 and 13 shall have no access to Plymouth Road.

Witnesses:

Ann Arbor Trust Company
 100 S. Main Street
 Ann Arbor, Michigan 48104

Autumn J. Kuehn
 Autumn J. Kuehn

William Broucek
 William Broucek
 Executive Vice-President

Mary Ann Durand
 Mary Ann Durand

Jeffrey A. Carter
 Jeffrey A. Carter
 Vice-President

ACKNOWLEDGEMENT

STATE OF MICHIGAN)
) ss.
 County of Washtenaw)

Personally came before me this 10th day of July, 1980, William Broucek, Executive Vice-President and Jeffrey A. Carter, Vice-President of the above named Banking Institution, to me known to be the persons who executed the foregoing instrument and to me known to be such Executive Vice-President and Vice-President of said Banking Institution, and acknowledged that they executed the foregoing instrument as such officers of the free act and deed by said Banking Institution by its authority.

Dorothy M. Ortbring
 Dorothy M. Ortbring

Notary Public, Washtenaw
 County, Michigan

My Commission expires: May 31, 1982

COUNTY TREASURER'S CERTIFICATE

The records in my office show no unpaid taxes or special assessments for the five years preceding July 14, 1980 involving the lands included in this plat.

Michael A. Stimpson
 Michael A. Stimpson
 Treasurer,
 Washtenaw County, Michigan

COUNTY DRAIN COMMISSIONER'S CERTIFICATE

Approved on September 9, 1980 as complying with Section 192 of Act 288, P.A. 1967, and the applicable rules and regulations published by my office in the County of Washtenaw.

Thomas J. Blessing
 Thomas J. Blessing
 Drain Commissioner

CERTIFICATE OF APPROVAL BY THE CITY PLANNING COMMISSION

This plat was approved by the Planning Commission of the City of Ann Arbor, Michigan at a meeting held on the 25th day of August, 1980.

R.V. Black
 R.V. Black, Chairman

Elizabeth Furmanski
 Elizabeth Furmanski Secretary

CERTIFICATE OF MUNICIPAL APPROVAL

I certify that this plat was approved by City Council of the City of Ann Arbor, at a meeting held October 6, 1980 and was reviewed and found to be in compliance with Act 288, P.A. of 1967, and that proper surety has been posted with the City of Ann Arbor to insure the construction of the public sewers and public water system prior to October 6, 1981. Proper surety has been posted with the City of Ann Arbor to insure the place of monuments and lot corners prior to October 6, 1981.

E. F. Vollbrecht
 E. F. Vollbrecht, City Clerk

COUNTY PLAT BOARD CERTIFICATE

This plat has been reviewed and is approved by the Washtenaw County Plat Board on November 13, 1980 as being in compliance with all of the provisions of Act 288, P.A. 1967, and the Plat Board's applicable rules and regulations.

Patricia Newkirk Hardy
 Patricia Newkirk Hardy, Register of Deeds

Robert M. Harrison
 Robert M. Harrison, County Clerk

Michael A. Stimpson
 Michael A. Stimpson, County Treasurer

RECORDING CERTIFICATE

STATE OF MICHIGAN)
) ss.
 County of Washtenaw)

This plat was received for record on the 29th day of January, 1981, A.D. at 4:39 P.M., and recorded in Liber 23 of Plats on page(s) 30, 31, 32.

Patricia Newkirk Hardy
 Patricia Newkirk Hardy
 Register of Deeds