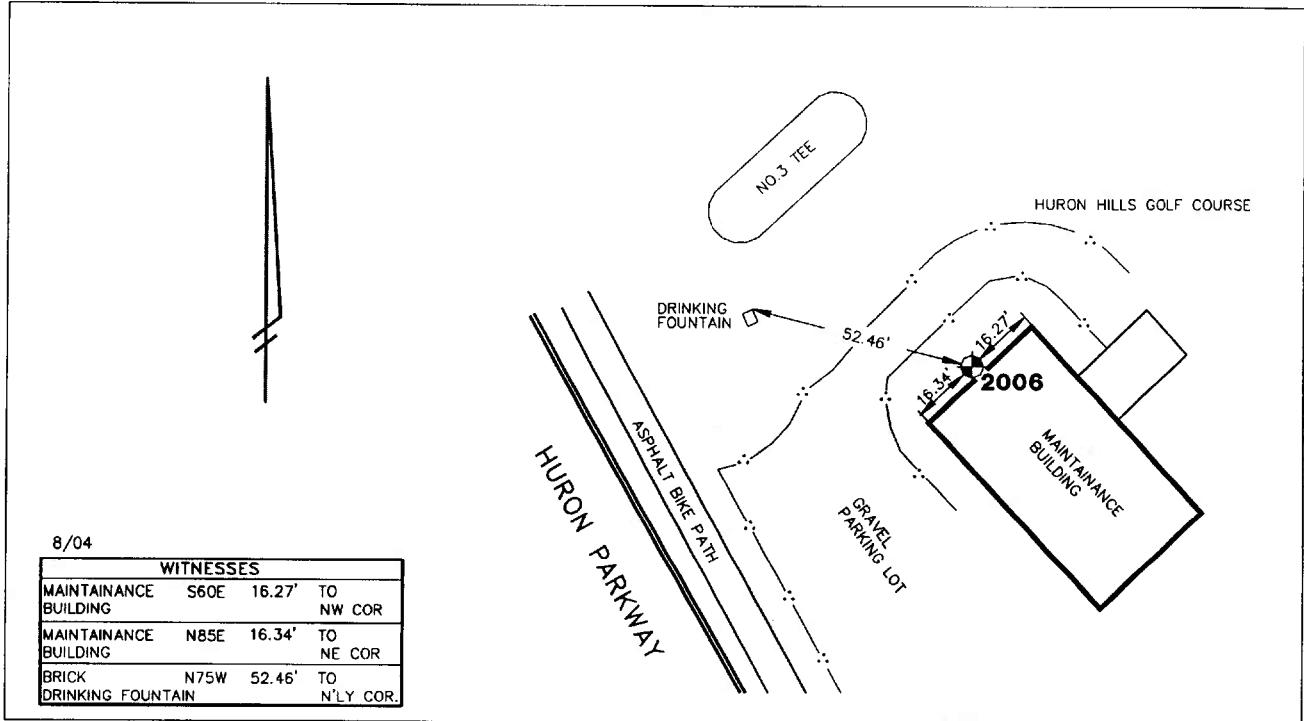


**City of Ann Arbor
Public Services Area • Project Management Unit
CONTROL STATION DATA SHEET**

Approximate Location: Huron Pkwy. at the Huron Hills golf course



STATION 2006 IS LOCATED ON THE EASTERLY SIDE OF HURON PARKWAY AT THE HURON HILLS GOLF COURSE, SAID STATION BEING IN THE NORTHWEST 1/4 OF SECTION 35, ANN ARBOR TOWNSHIP IN THE CITY OF ANN ARBOR, MICHIGAN. THE STATION IS LOCATED 2.9' NORTHWESTERLY OF THE GOLF COURSE MAINTAINANCE BUILDING AND 16.34' NORTHEASTERLY OF THE NORTHWESTERLY CORNER OF SAID MAINTAINANCE BUILDING. SAID STATION IS A VERTICAL CONTROL STATION AND IS DESCRIBED AS THE 1972 EDITION OF THE CITY OF ANN ARBOR BRASS DISC, SET IN CONCRETE PER DETAIL III AND IS FLUSH WITH THE GROUND. THE STATION WAS SET BY THE CITY OF ANN ARBOR IN 1972.

Benchmark

Vertical

Accuracy	Local Control
Datum	NAVD 88
Elevation in meters	234.244
Elevation in International feet	768.52

**No. 2006
Sector: EC**