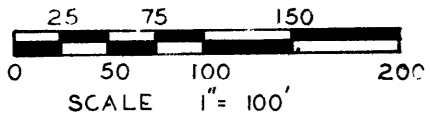


"SMOKLER HUTZEL SUB. NO. 3"

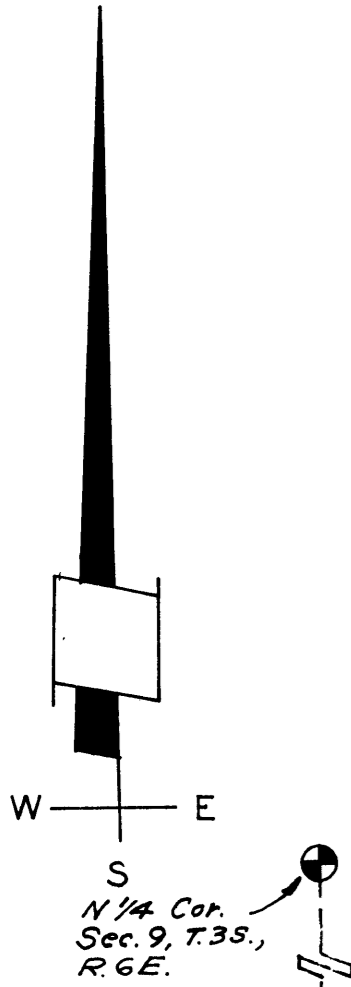
OF PART OF THE N.E. 1/4 OF SECTION 9, T.3S., R.6 E.,
CITY OF ANN ARBOR, WASHTENAW COUNTY, MICHIGAN



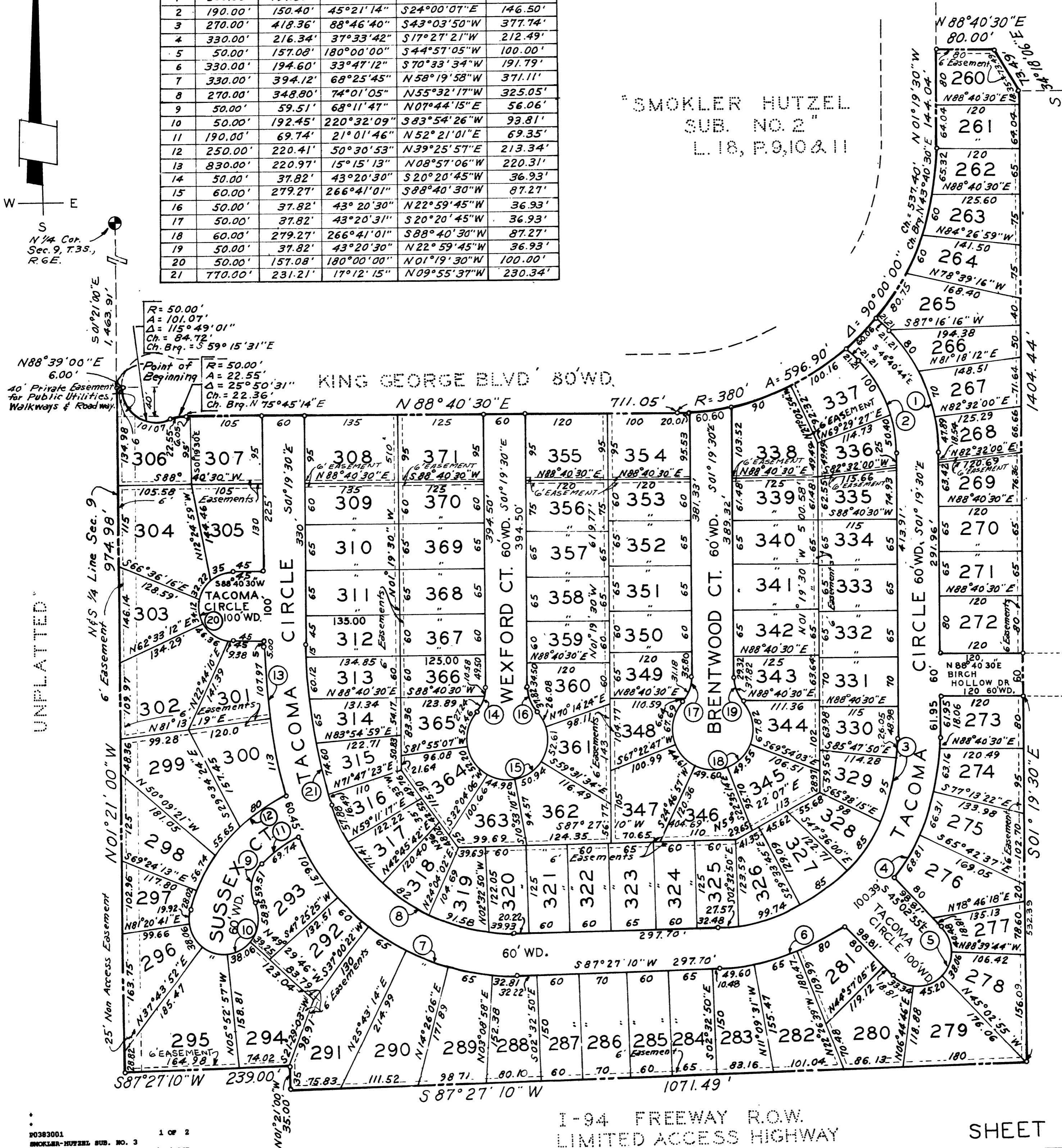
NOTE:
ALL DIMENSIONS ARE IN FEET AND DECIMALS THEREOF. ALL DIMENSIONS ON CURVES ARE MEASURED ALONG ARC.
ALL EASEMENTS ARE PRIVATE FOR PUBLIC UTILITIES AND DRAINAGE.

CURVE DATA

CURVE	RADIUS	ARC	CENTRAL ANGLE	CHORD BEARING	CHORD LENGTH
1	250.00'	197.89'	45°21'14"	S24°00'07"E	192.77'
2	190.00'	150.40'	45°21'14"	S24°00'07"E	146.50'
3	270.00'	418.36'	88°46'40"	S43°03'50"W	377.74'
4	330.00'	216.34'	37°33'42"	S17°27'21"W	212.49'
5	50.00'	157.08'	180°00'00"	S44°57'05"W	100.00'
6	330.00'	194.60'	33°47'12"	S70°33'34"W	191.79'
7	330.00'	394.12'	68°25'45"	N58°19'58"W	371.11'
8	270.00'	348.80'	74°01'05"	N55°32'17"W	325.05'
9	50.00'	59.51'	68°11'47"	N07°44'15"E	56.06'
10	50.00'	192.45'	220°32'09"	S83°54'26"W	93.81'
11	190.00'	69.74'	21°01'46"	N52°21'01"E	69.35'
12	250.00'	220.41'	50°30'53"	N39°25'57"E	213.34'
13	830.00'	220.97'	15°15'13"	N08°57'06"W	220.31'
14	50.00'	37.82'	43°20'30"	S20°20'45"W	36.93'
15	60.00'	279.27'	266°41'01"	S88°40'30"W	87.27'
16	50.00'	37.82'	43°20'30"	N22°59'45"W	36.93'
17	50.00'	37.82'	43°20'31"	S20°20'45"W	36.93'
18	60.00'	279.27'	266°41'01"	S88°40'30"W	87.27'
19	50.00'	37.82'	43°20'30"	N22°59'45"W	36.93'
20	50.00'	157.08'	180°00'00"	N01°19'30"W	100.00'
21	770.00'	231.21'	17°12'15"	N09°55'37"W	230.34'



"SMOKLER HUTZEL SUB. NO. 2"
L. 18, P. 9, 10 & 11



"SMOKLER HUTZEL SUB. NO. 3"

OF PART OF THE N.E. 1/4 OF SECTION 9, T.3S., R.6 E., CITY OF ANN ARBOR, WASHTENAW COUNTY, MICHIGAN

CERTIFICATION OF APPROVAL BY THE CITY PLANNING COMMISSION

The plat was approved by the Planning Commission of the City of Ann Arbor, Michigan, at a meeting held on the 8th day of AUGUST 1967.

Keith F. Weiland
Keith F. Weiland - Chairman
Robert B. Kerschbaum
Robert B. Kerschbaum - Secretary

DEDICATION

KNOW ALL MEN BY THESE PRESENTS, that we, SYLVAN DEVELOPMENT COMPANY, INC., a Michigan corporation by Bert L. Smokler, President, and Arthur E. Knoff, Secretary, and EDWARD C. HUTZEL and MARGARET C. HUTZEL, his wife, as proprietors, have caused the land embraced in the annexed plat to be surveyed, laid out and platted to be known as SMOKLER-HUTZEL SUBDIVISION No. 3, part of the N. E. 1/4 of Section 9, T.3S., R.6E., City of Ann Arbor, Washtenaw County, Michigan, and the streets and alleys as shown on said plat are hereby dedicated to the use of the public, and that the easements indicated on said plat are not dedicated to the public but reserved for public utilities, and any other use designated hereon, and no permanent structures are to be located within said easements, and no direct ingress or egress permitted to I-94 from Lots 279 through 295 inclusive. Signed and sealed in the presence of:

SYLVAN DEVELOPMENT COMPANY, INC.
200 Northland Towers West
Southfield, Michigan

Priscilla E. Harper
Priscilla E. Harper (Witness)
Delphine Vaughan
Delphine Vaughan (Witness)
Thaddeus A. Wozniak
THADDEUS A. WOZNIAK (Witness)
John S. Blanchard
JOHN S. BLANCHARD (Witness)
Bert L. Smokler
Bert L. Smokler, President
Arthur E. Knoff
Arthur E. Knoff, Secretary
Edward C. Hutzal
Edward C. Hutzal
Margaret C. Hutzal
Margaret C. Hutzal

CERTIFICATE OF MUNICIPAL APPROVAL

The plat was approved by the Common Council of the City of Ann Arbor at a meeting held 31 AUGUST 1967 and that the width of lots is in compliance with requirements of Section 30, Act 172, of 1929, as amended, and is in compliance with Section 19a.

John P. Bentley
John P. Bentley, Clerk

APPROVAL OF COUNTY PLAT BOARD

This plat was approved on the 28th day of September 1967 by the Washtenaw County Plat Board. We further certify that this plat appears to include land adjacent to State Highway.

Patricia Newkirk Hardy
Patricia Newkirk Hardy (County Register of Deeds)

J. Martin Rempp
J. Martin Rempp (Auditor)
Herbert G. Loeffler
Herbert G. Loeffler (Auditor)
John P. Cook
John P. Cook (Auditor)
John H. Flook
John H. Flook (County Drain Commissioner)

ACKNOWLEDGMENT

STATE OF MICHIGAN)
) ss
COUNTY OF OAKLAND)

On this 9th day of June 1967, before me, a Notary Public in and for said County, personally came the above named Bert L. Smokler and Arthur E. Knoff to me personally known, who being each by me duly sworn did say that they are the President and Secretary respectively of the SYLVAN DEVELOPMENT COMPANY, INC., a Michigan corporation, and that the seal affixed to said instrument is the corporation seal of said corporation and that the said instrument was signed and sealed in behalf of said corporation by authority of its Board of Directors; and the said officers acknowledged the said instrument to be the free act and deed of said corporation.

Mary M. Lemcke
Mary M. Lemcke, Notary Public, Oakland Co.

My Commission Expires: August 13, 1967

ACKNOWLEDGMENT

STATE OF MICHIGAN)
) ss
COUNTY OF WASHTENAW)

On this 29th day of June 1967, before me; a Notary Public in and for said County, personally came the above named Edward C. Hutzal and Margaret C. Hutzal, his wife, known to me to be the persons who executed the above dedication and acknowledged the same to be their free act and deed.

My Commission Expires: August 13, 1967

Mary M. Lemcke
MARY M. LEMCKE
Notary Public, Washtenaw Co.
Acting in Washtenaw County

COUNTY TREASURER'S CERTIFICATE

Office of County, Treasurer, Washtenaw County, I hereby certify that there are no tax liens or titles held by the State on the lands described hereon, and that there are no tax liens or titles held by individuals on said lands, for the five years preceding the 12 day of Sept 1967 and that the taxes for said period of five years are all paid, as shown by the records of this office. This certificate does not apply to taxes if any, now in process of collection by Township, City or Village collecting officers.

Sylvester Leonard
Sylvester Leonard (County Treasurer)

SURVEYOR'S CERTIFICATE

I hereby certify that the plat hereon delineated is a correct one and that permanent metal monuments consisting of bars not less than one-half inch in diameter and 36 inches in length, or shorter bars of not less than one-half inch in diameter lapped over each other at least 6 inches with an overall length of not less than 36 inches, encased in a concrete cylinder at least 4 inches in diameter and 36 inches in depth have been placed at points marked thus (o) as thereon shown at all angles in the boundaries of the land platted, at all the intersections of streets, intersections of alleys, or of streets and alleys, and at the intersections of streets and alleys with the boundaries of the plat as shown on said plat.

Eugene F. Zeimet
Eugene F. Zeimet
Registered Professional Engineer and
Registered Land Surveyor, Mich. No. 9209
200 Northland Towers West
Southfield, Michigan

Prepared and Drafted by:

I hereby certify this copy is a true copy of map or plat forwarded the Registrar of Deeds for recording.
Date August 17, 1967
FILED IN DEPT. OF TREASURY
Date September 15, 1967
EXAMINED AND APPROVED
Date November 17, 1967

Allison Green
ALLISON GREEN
STATE TREASURER
Richard E. Jones
Richard E. Jones

APPROVED Nov. 13, 1967

MICHIGAN STATE HIGHWAY COMMISSION
Henrik E. Stafzuth
HENRIK E. STAFZUTH
Acting State Highway Director

DESCRIPTION OF LAND PLATTED

The land embraced in the annexed plat of SMOKLER-HUTZEL SUBDIVISION No. 3 of part of the N.E. 1/4 of Section 9, T.3S., R.6E., City of Ann Arbor, Washtenaw County, Michigan, is described as follows: Beginning at a point on the North and South 1/4 line of Section 9, distant S. 01°21'00" E. 1463.91 feet from the N. 1/4 corner of Section 9, T.3S., R.6E., City of Ann Arbor, Washtenaw County, Michigan; thence along the South line of King George Blvd. of SMOKLER-HUTZEL SUBDIVISION No. 2, as recorded in Liber 18 of Plats, Pages 9, 10 and 11, Washtenaw County Register of Deeds office the following eight distances: 6.00 feet N. 88°39'00" E. and 101.07 feet along the arc of a non-tangential curve to the left, said curve having a radius of 50.00 feet, a central angle of 115°49'01" a chord bearing of S. 59°15'31" E., a chord length of 84.72 feet and 22.55 feet along the arc of a reverse curve to the right, said curve having a radius of 50.00 feet, a central angle of 25°50'31", a chord bearing of N. 75°45'14" E., a chord length of 22.36 feet and N. 88°40'30" E. 711.05 feet and 596.90 feet along the arc of a tangential curve to the left, said curve having a radius of 380.00 feet, a central angle of 90°00'00", a chord bearing of N. 43°40'30" E., a chord length of 537.40 feet and N. 01°19'30" W. 144.04 feet and N. 88°40'30" E. 80.00 feet and S. 34°18'06" E. 73.49 feet; thence along the West line of Spruce Knob Subdivision as recorded in Liber 18 of Plats, Pages 43 and 44, Washtenaw County Register of Deeds office S. 01°19'30" E. 1404.44 feet; thence along the I-94 Freeway R/W the following three distances, S. 87°27'10" W. 1071.49 feet and N. 01°21'00" W. 35.00 feet and S. 87°27'10" W. 239.00 feet; thence along the North and South 1/4 line Section 9, N. 01°21'00" W. 974.98 feet to the point of beginning and containing lots numbered 260 to 371.