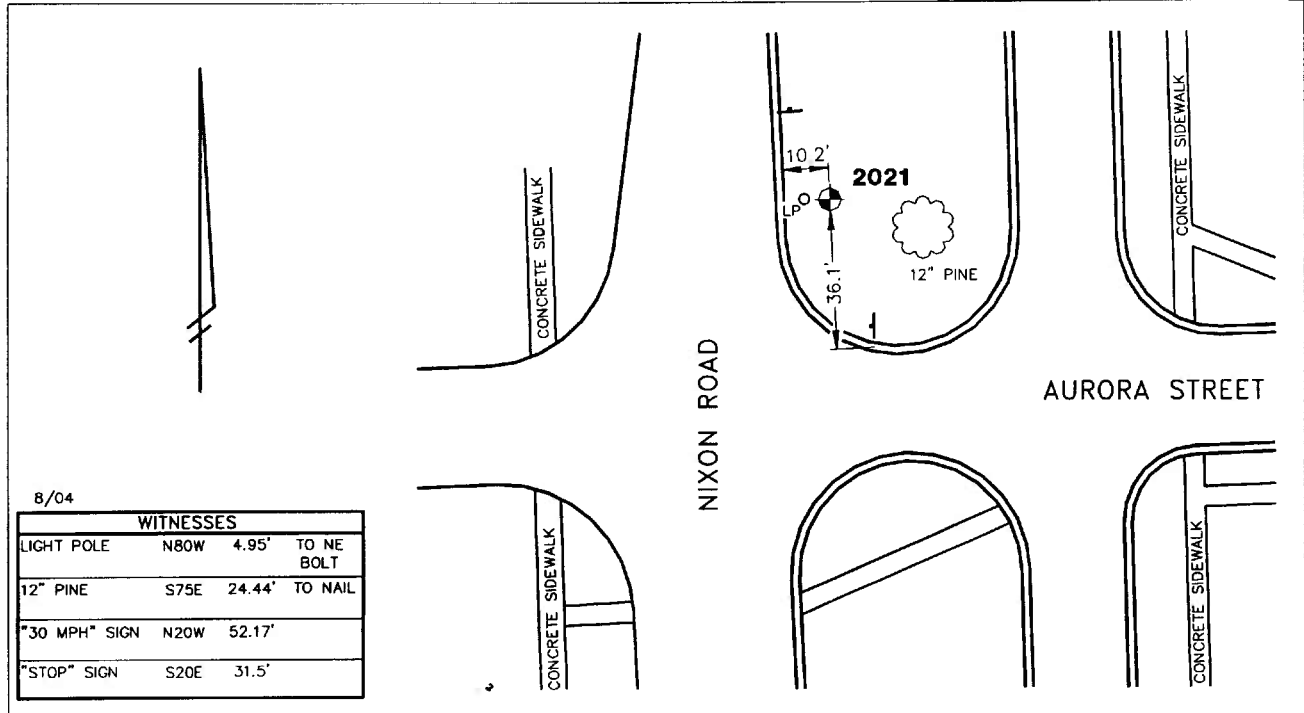


City of Ann Arbor
Public Services Area • Project Management Unit
CONTROL STATION DATA SHEET

Approximate Location: Nixon Rd. and Aurora St.



STATION 2021 IS LOCATED IN THE GRASS TRAFFIC ISLAND ON NIXON ROAD AND NORTH OF AURORA STREET, SAID STATION BEING IN THE SOUTHEAST 1/4 OF SECTION 15, ANN ARBOR TOWNSHIP IN THE CITY OF ANN ARBOR, MICHIGAN. THE STATION IS LOCATED 10.2' EAST OF THE BACK OF CURB AT THE WEST EDGE OF SAID TRAFFIC ISLAND AND 36.1' NORTH OF THE BACK OF CURB AT THE SOUTH END OF SAID TRAFFIC ISLAND. SAID STATION IS A VERTICAL CONTROL STATION AND IS DESCRIBED AS THE 1993 EDITION OF THE CITY OF ANN ARBOR BRASS DISC, SET IN CONCRETE PER DETAIL II AND IS FLUSH WITH THE GROUND. THE STATION WAS SET BY THE CITY OF ANN ARBOR IN 2001.

Benchmark

Vertical

Accuracy	Local Control
Datum	NAVD 88
Elevation in meters	275.166
Elevation in International feet	902.78

No. 2021
Sector: NE