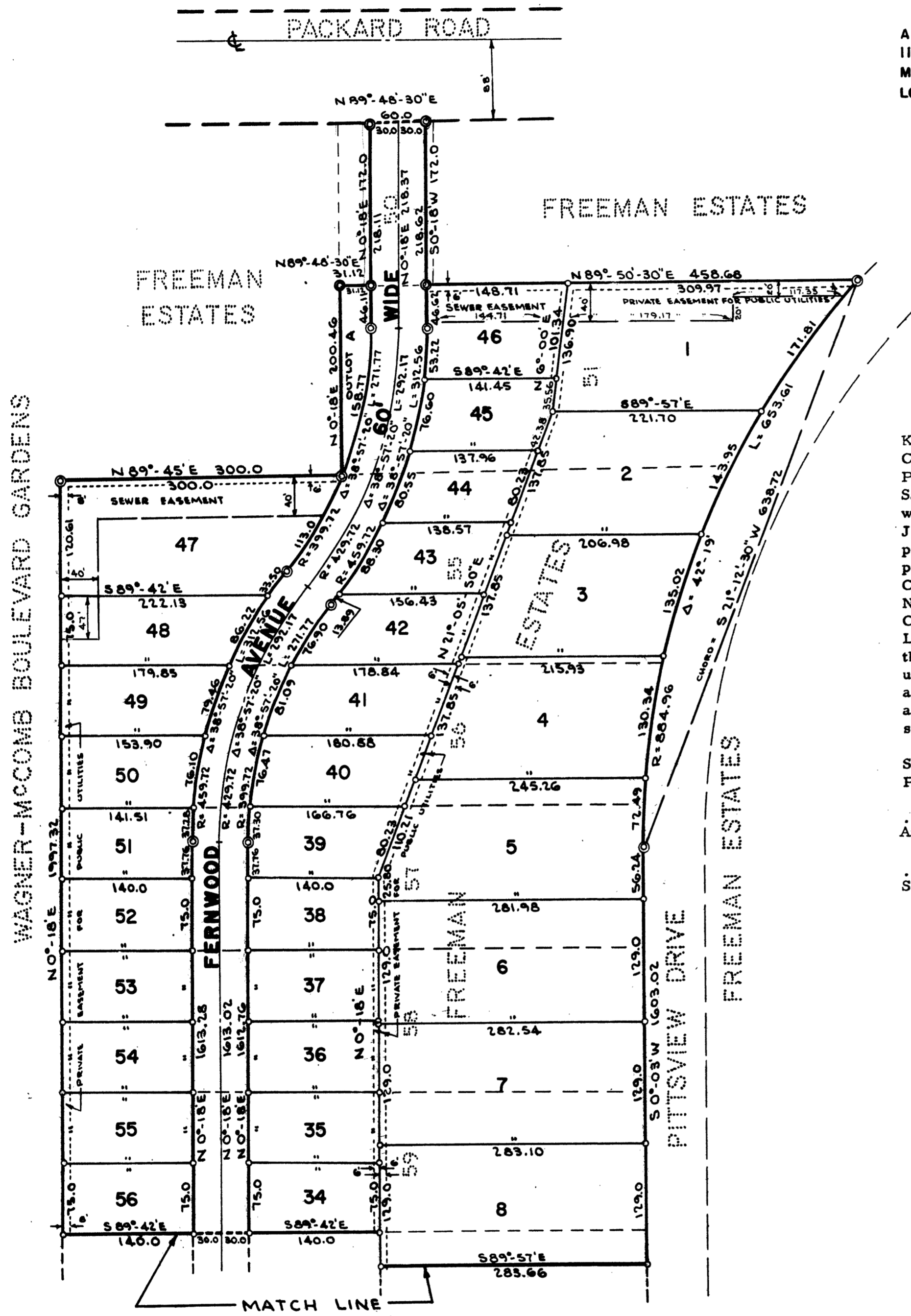


COPY
COLONIAL VILLAGE

A SUBDIVISION OF PART OF THE E 1/2 OF THE NW 1/4 OF SECTION 11, T3S, R6E, CITY OF ANN ARBOR, WASHTENAW COUNTY, MICHIGAN, BEING A REPLAT OF PART OF LOT 50 AND ALL OF LOTS 51 AND 55 THRU 67 INCLUSIVE OF FREEMAN ESTATES



SCALE 1" = 100'
 ALL DIMENSIONS IN FEET AND DECIMALS THEREOF
 ALL DIMENSIONS ON CURVES ARE ARC LENGTHS
 SURVEY BY ATWELL-HICKS, INC.



DESCRIPTION OF LAND PLATTED

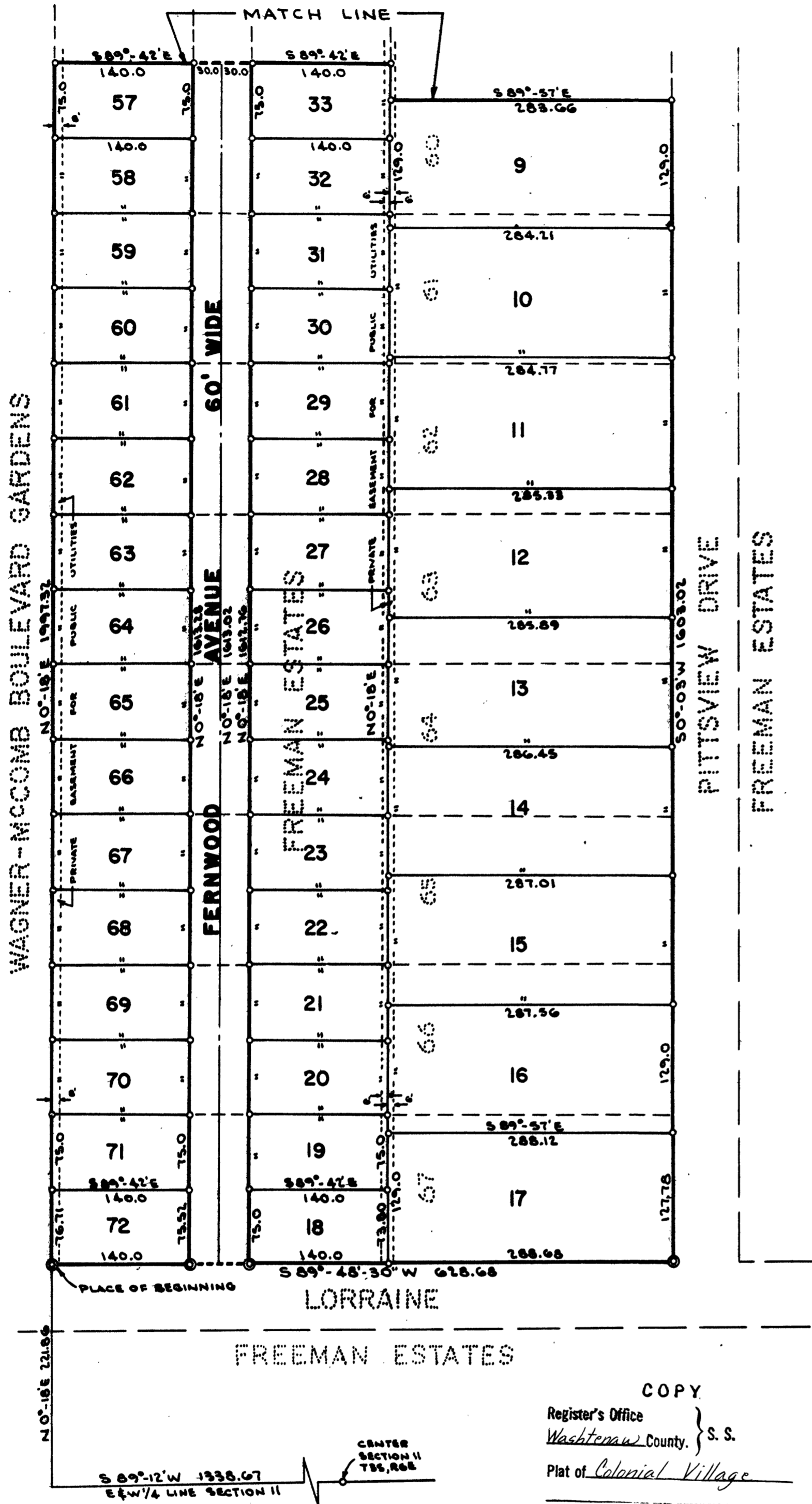
The land embraced in the annexed plat of COLONIAL VILLAGE a subdivision of part of the E 1/2 of the NW 1/4 of Section 11, T3S, R6E, City of Ann Arbor, Washtenaw County, Michigan, being a replat of part of Lot 50 and all of Lots 51 and 55 thru 67 inclusive of Freeman Estates is described as follows: Commencing at the center of Section 11, T3S, R6E, City of Ann Arbor, Washtenaw County, Michigan; thence S 89° -12' W 1338.67 feet along the E & W 1/4 line of said section; thence N 0° -18' E 221.86 feet for a PLACE OF BEGINNING; thence N 0° -18' E 1997.32 feet; thence N 89° -45' E 300.0 feet; thence N 0° -18' E 200.46 feet; thence N 89° -48' -30" E 31.12 feet; thence N 0° -18' E 172.0 feet; thence N 89° -48' -30" E 60.0 feet; thence S 0° -18' W 172.0 feet; thence N 89° -50' -30" E 458.68 feet; thence Southerly 653.61 feet along the arc of a circular curve concave to the East, radius 884.96 feet, chord S 21° -12' -30" W 638.72 feet; thence S 0° -03' W 1603.02 feet; thence S 89° -48' -30" W 628.68 feet to the Place of Beginning, containing 72 lots, numbered 1 through 72 inclusive, and one Outlot lettered A;

DEDICATION

KNOW ALL MEN BY THESE PRESENTS, that we, William J. Conlin and Ellen A. Conlin his wife, John W. Conlin, Jr and Patricia A. Conlin his wife, Joseph E. Savarino and Maya Savarino his wife, Donald Chisholm and Betty Chisholm his wife, Karl D. Malcolm Jr and Sarah J. Malcolm his wife, John Mersereau and Nanine L. Mersereau his wife, as proprietors, have caused the land embraced in the annexed plat to be surveyed, laid out and platted to be known as COLONIAL VILLAGE a subdivision of part of the E 1/2 of the NW 1/4 of Section 11, T3S, R6E, City of Ann Arbor, Washtenaw County, Michigan, being a replat of part of Lot 50 and all of Lots 51 and 55 thru 67 inclusive of Freeman Estates and that the Avenue as shown on said plat is hereby dedicated to the use of the public and the easements indicated on said plat are not dedicated to the public but reserved for public utilities and any other use designated hereon and no permanent structures are to be located within said easement.

Signed in the Presence of:

<i>Amy E. Papworth</i>	Witness	<i>William J. Conlin</i>	William J. Conlin 3076 Geddes Avenue Ann Arbor, Michigan
<i>Sue E. Wilhelm</i>	Witness	<i>Ellen A. Conlin</i>	Ellen A. Conlin 3076 Geddes Avenue Ann Arbor, Michigan
		<i>John W. Conlin Jr</i>	John W. Conlin Jr 2228 Medford Road Ann Arbor, Michigan
		<i>Patricia A. Conlin</i>	Patricia A. Conlin 2228 Medford Road Ann Arbor, Michigan
		<i>Joseph E. Savarino</i>	Joseph E. Savarino 1202 Olivia Ann Arbor, Michigan
		<i>Maya Savarino</i>	Maya Savarino 1202 Olivia Ann Arbor, Michigan
		<i>Donald Chisholm</i>	Donald Chisholm 2429 Colony Court Ann Arbor, Michigan
		<i>Betty Chisholm</i>	Betty Chisholm 2429 Colony Court Ann Arbor, Michigan
		<i>Karl D. Malcolm Jr</i>	Karl D. Malcolm Jr 2503 Hampshire Ann Arbor, Michigan
		<i>Sarah J. Malcolm</i>	Sarah J. Malcolm 2503 Hampshire Ann Arbor, Michigan
		<i>John Mersereau</i>	John Mersereau 405 Awixa Ann Arbor, Michigan
		<i>Nanine L. Mersereau</i>	Nanine L. Mersereau 405 Awixa Ann Arbor, Michigan



COPY
COLONIAL VILLAGE

A SUBDIVISION OF PART OF THE E 1/2 OF THE NW 1/4 OF SECTION 11, T3S, R6E, CITY OF ANN ARBOR, WASHTENAW COUNTY, MICHIGAN, BEING A REPLAT OF PART OF LOT 50 AND ALL OF LOTS 51 AND 55 THRU 67 INCLUSIVE OF FREEMAN ESTATES

0 100 200 300

SCALE 1" = 100'
 ALL DIMENSIONS IN FEET AND DECIMALS THEREOF
 ALL DIMENSIONS ON CURVES ARE ARC LENGTHS
 SURVEY BY ATWELL-HICKS, INC.

CERTIFICATE OF MUNICIPAL APPROVAL

This plat was approved by the Common Council of the City of Ann Arbor at a meeting held April 10, 1964, and is in compliance with Section 19a and that the width of lots conforms with requirements of Section 30, Act 172, of 1929, as amended.

Fred J. Looker
 Fred J. Looker, Clerk

CERTIFICATE OF APPROVAL BY THE CITY PLANNING COMMISSION

This plat was approved by the Planning Commission of the City of Ann Arbor, Michigan at a meeting held on the 14th day of April, 1964.

Richard A. Ware
 Richard A. Ware, Chairman
Joseph W. Edwards
 Joseph W. Edwards, Vice-Chairman

Robert V. Galbreath
 Robert V. Galbreath, Secretary

COUNTY TREASURER'S CERTIFICATE
 Office of County Treasurer, Washtenaw County

I hereby certify, that there are no tax liens or titles held by the State on the lands described hereon, and that there are no tax liens or titles held by individuals on said lands for the five years preceding the 14th day of April, 1964, and that the taxes for said period of five years are all paid, as shown by the records of this office.

This Certificate does not apply to taxes, if any, now in process of collection by township, city or village collecting officer.

Sylvester A. Leonard
 Sylvester A. Leonard,
 County Treasurer

APPROVAL BY COUNTY PLAT BOARD

This plat was approved on the 15th day of May, 1964 by the Washtenaw County Plat Board.

Patricia Newkirk Hardy John H. Flock
 Patricia Newkirk Hardy John H. Flock
 County Register of Deeds County Drain Commissioner
J. Martin Rempp
 J. Martin Rempp
 Auditor
John P. Cook
 John P. Cook
 Auditor

SURVEYOR'S CERTIFICATE

I hereby certify that the plat hereon delineated is a correct one and that permanent metal monuments consisting of bars not less than one-half inch in diameter and 36 inches in length, or shorter bars of not less than one-half inch in diameter lapped over each other at least 6 inches with an over-all length of not less than 36 inches, encased in a concrete cylinder at least 4 inches in diameter and 36 inches in depth have been placed at points marked thus (⊙) as thereon shown at all angles in the boundaries of the land platted, at all the intersections of streets, intersections of alleys, or of streets and alleys, and at the intersection of streets and alleys with the boundaries of the plat as shown on said plat.

Robert J. Jagow
 Robert J. Jagow
 Registered Surveyor No. 6998
 114 N. First Street, Ann Arbor, Michigan

I hereby certify this copy is a true copy of map or plat forwarded the Register of Deeds for recording.
 Date June 5, 1964
 FILED IN AUDITOR GENERAL'S DEPT.
 Date June 24, 1964
 EXAMINED AND APPROVED
 Date June 5, 1964

Billie S. Farwell
 BILLIE S. FARWELL
 AUDITOR GENERAL
 By *Richard E. Lomax*
 Richard E. Lomax - Plat Examiner

ACKNOWLEDGMENT

STATE OF MICHIGAN)
) ss.
 County of Washtenaw)

On this 3rd day of April, A.D., 1964, before me, a Notary Public in and for said county, personally came the above named William J. Conlin, Ellen A. Conlin, John W. Conlin Jr., Patricia A. Conlin, Joseph E. Savarino, Maya Savarino, Donald Chisholm, Betty Chisholm, Karl D. Malcolm Jr., Sarah J. Malcolm, John Mersereau and Nanine L. Mersereau known to me to be the persons who executed the above dedication, and acknowledged the same to be their free act and deed.

Amy E. Papworth
 Amy E. Papworth
 Notary Public, Washtenaw County, Michigan
 My Commission expires July 15, 1967.

COPY
 Register's Office
 Washtenaw County, S. S.
 Plat of Colonial Village
 was Recorded this 9th day of
 June A.D. 1964 at 1:02 O'clock
 P.M. in Liber 17 of Plats
 on Pages 16 & 17
Patricia Newkirk Hardy
 Register of Deeds
 ORIGINAL ON FILE