

DEC 27 1955

WOODSTREAM SUBDIVISION
LIBER: 13 PAGE: 19
12/30/1955

WOODSTREAM SUBDIVISION

PART OF THE N 1/2 OF SECTION 21, T 2 S, R 6 E, CITY OF ANN ARBOR, WASHTENAW COUNTY, MICHIGAN
SCALE: 1" = 100'
ALL DIMENSIONS ARE GIVEN IN FEET AND DECIMALS THEREOF
SURVEY BY
ATWELL-HICKS, INC.
ANN ARBOR

DEDICATION

KNOW ALL MEN BE THESE PRESENTS, that we Cruse W. Moss and Virginia A. Moss, his wife, have caused the land embraced in the annexed plat to be surveyed, laid out and platted, to be known as WOODSTREAM SUBDIVISION part of the N 1/2 of Section 21, T 2 S, R 6 E, City of Ann Arbor, Washtenaw County, Michigan.

Signed and Sealed in the Presence of:

Henry G. Velker (Witness) *Cruse W. Moss*
Ralph P. Warner (Witness) *Virginia A. Moss*

DESCRIPTION OF LAND PLATTED

The land embraced in the annexed plat of WOODSTREAM SUBDIVISION part of the N 1/2 of Section 21, T 2 S, R 6 E, City of Ann Arbor, Washtenaw County, Michigan is described as follows:

COMMENCING at the center of Section 21, T 2 S, R 6 E, Ann Arbor Township, Washtenaw County, Michigan; thence S 85°-44' W 15.34 feet; thence S 12°-36' W 53.90 feet; thence N 58°-19' W 26.45 feet for a PLACE OF BEGINNING; thence continuing N 56°-19' W 332.61 feet; thence N 50°-23'-30" E 594.40 feet; thence N 70°-13' E 194.71 feet; thence S 12°-32' W 527.97 feet; thence N 77°-24' W 215.0 feet; thence S 12°-36' W 154.62 feet to the place of beginning, containing 15 lots numbered 1 through 15 inclusive.

SURVEYOR'S CERTIFICATE

I hereby certify that the plat hereon delineated is a correct one and that permanent metal monuments consisting of bars not less than one-half inch in diameter and 36 inches in length, or shorter bars of not less than one-half inch in diameter lapped over each other at least 6 inches with an over-all length of not less than 36 inches, encased in a concrete cylinder at least 4 inches in diameter and 36 inches in depth have been placed at points marked thus (⊙) as thereon shown at all angles in the boundaries of the land platted, at all the intersections of lines of streets, and at the intersections of lines of streets with the boundaries of the plat as shown on said plat.

Robert J. Jagow
Robert J. Jagow
Registered Land Surveyor #6996

ACKNOWLEDGMENT

STATE OF MICHIGAN)
County of *Washtenaw*) ss.

On this *8th* day of *October*, 1955, before me a Notary Public in and for said County, personally came the above named Cruse W. Moss and Virginia A. Moss, his wife, known to me to be the persons who executed the above dedication, and acknowledged the same to be their free act and deed.

Ralph P. Warner
Ralph P. Warner
Notary Public in and for *Washtenaw* County
My Commission expires *Sept. 16, 1956*.

ATTORNEY'S OPINION

I hereby certify from an examination of *A 337 296* of title to the lands described in this plat that I find no outstanding interest, including mineral rights, other than in the parties joining in the dedication.

Dated *11/29/55*
Carl R. Colman
Carl R. Colman (Attorney)

COUNTY TREASURER'S CERTIFICATE

Office of County Treasurer, Washtenaw County
I hereby certify, that there are no tax liens or titles held by the State on the lands described hereon, and that there are no tax liens or titles held by individuals on said lands, for the five years preceding the *22nd* day of *November*, 1955, and that the taxes for said period of five years are all paid, as shown by the records of this office.
This certificate does not apply to taxes, if any, now in process of collection by township, city or village collecting officers.

W. F. Verner
W. F. Verner
(County Treasurer)

APPROVAL BY COUNTY PLAT BOARD

This plat was approved on the *2nd* day of *December*, 1955, by the Washtenaw County Plat Board.

Patricia Newkirk Hardy
Patricia Newkirk Hardy (County Register of Deeds)
J. Martin Remp
J. Martin Remp (Auditor)
Adolph F. Gross
Adolph F. Gross (Auditor)
Herbert G. Loeffler
Herbert G. Loeffler (Auditor)

CERTIFICATE AS TO STATE TRUNK LINE OR FEDERAL AID ROADS

We hereby certify that said plat appears to include land located on a state trunk line or federal aid road.

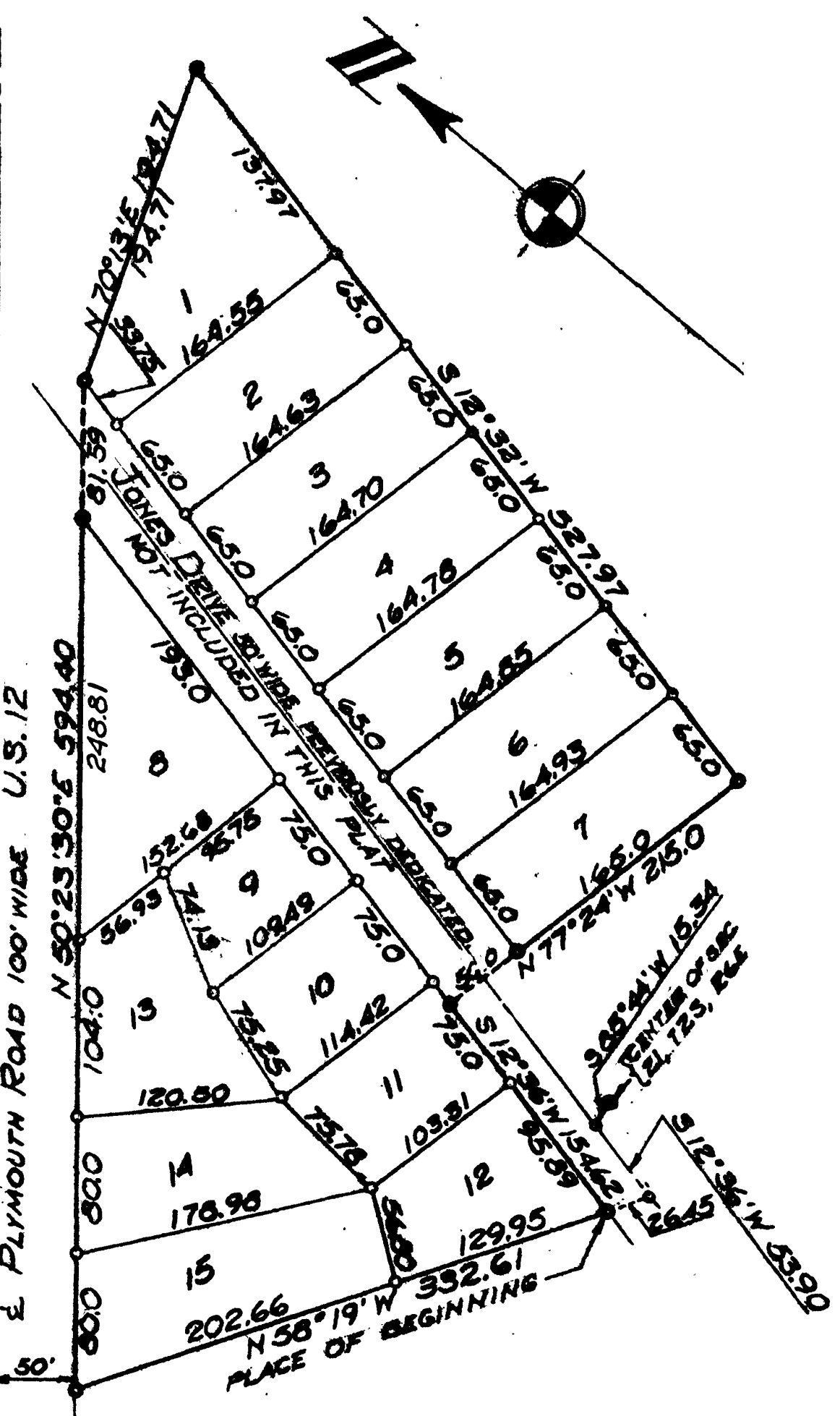
Patricia Newkirk Hardy
Patricia Newkirk Hardy (County Register of Deeds)
J. Martin Remp
J. Martin Remp (Auditor)
Adolph F. Gross
Adolph F. Gross (Auditor)
Herbert G. Loeffler
Herbert G. Loeffler (Auditor)

CITY CLERK'S CERTIFICATE

Office of City Clerk, City of Ann Arbor
I hereby certify, that the width and depth of lots shown on this plat are in compliance with rules and regulation of the City of Ann Arbor and the requirements as to width and depth of Sec. 30 of Act 172, Public Acts of 1929 as amended by Act 186 Public Acts of 1954.

Fred J. Looker
Fred J. Looker
(Clerk)

APPROVED
Charles M. Ziegler
CHARLES M. ZIEGLER
CITY CLERK



COPY
Register's Office
Washtenaw County
Plat of *Woodstream Subdivision*
City of Ann Arbor
was Recorded this *20th* day of
December, A.D., 1955, at *11:27* o'clock
A.M. in Liber *13* of Plats
Page *13*
Patricia Newkirk Hardy
Register of Deeds
G. M. Koons, Reg.

I hereby certify this copy is a true copy of map or plat forwarded the Register of Deeds for recording.
Date *December 27, 1955*
Filed in Auditor General's Dept.
Date *January 6, 1956*
Examined and approved
Date *December 27, 1955*
Vlad Targovskii
Auditor General
By *H. L. MacElroy*
City Engineer